

Silene ophioglossa (Caryophyllaceae, Sileneae), a new species from southwest China

Feng Yang¹, Ting-Ting Wang², Yue-Hua Wang², Huan-Chong Wang^{2,3}

1 School of Life Sciences, Yunnan University, Kunming 650091, China **2** School of Ecology and Environmental Science, Yunnan University, Kunming 650091, China **3** Herbarium of Yunnan University, Kunming 650091, Yunnan, China

Corresponding authors: Yue-Hua Wang (wangyh58212@126.com); Huan-Chong Wang (hchwang@ynu.edu.cn)

Academic editor: Gian P. G. del Galdo | Received 1 December 2022 | Accepted 3 April 2023 | Published 26 April 2023

Citation: Yang F, Wang T-T, Wang Y-H, Wang H-C (2023) *Silene ophioglossa* (Caryophyllaceae, Sileneae), a new species from southwest China. *PhytoKeys* 225: 99–113. <https://doi.org/10.3897/phytokeys.225.98247>

Abstract

Silene ophioglossa Huan C. Wang & Feng Yang, a new species of Caryophyllaceae, is here described and illustrated based on morphological and molecular evidence. The new species was found in Sichuan and Yunnan provinces, southwest China. Phylogenetic analysis based on ITS sequences showed this new species belongs to section *Cucubaloidea*. Morphologically, it resembles *S. phoenicodonta* and *S. viscidula*, which were also found in the southwest China, but clearly differs from the latter two species by having 5–7 mm long calyces with sparsely hirtellous and short glandular hairs, white petals, linear limbs and lobes, and absent or oblong-linear coronal scales. A distribution map and a table with morphological diagnostic characters of new species and its closest relatives are provided, as well as a preliminary conservation assessment of *S. ophioglossa* under the IUCN criteria.

Keywords

Conservation assessment, endemism, ITS sequence, *Silene phoenicodonta*, *Silene* sect. *Cucubaloidea*

Introduction

The genus *Silene* L. (Sileneae DC., Caryophyllaceae Juss.), with 700 to 870 species (Mabberley 2017; Jafari et al. 2020) is mainly distributed in temperate regions of the Northern Hemisphere (Greuter 1995; Oxelman and Lidén 1995; Zhou et al. 2001). The center of its diversity is considered to be in western Asia and the Mediterranean area, but areas of central Asia are also highly diverse (Jafari et al. 2020). There has been consider-

able controversy regarding delimitation of the genus *Silene*. Recent molecular studies have clearly demonstrated that *Silene* (in the traditional sense), is paraphyletic since *Lychmis* L., *Atocion* Adans. and *Viscaria* Bernh. are nested within it (Jafari et al. 2020). Some authors suggested lumping most members of Sileneae into the genus (e.g. Greuter 1995; Desfeux and Lejeune 1996; Jafari et al. 2020). Conversely, other authors (e.g. Oxelman and Lidén 1995; Oxelman et al. 1997, 2001; Popp and Oxelman 2004; Frajman et al. 2009a, b; Greenberg and Donoghue 2011) preferred to separate *Agrostemma* L., *Eudianthe* (Rchb.) Rchb., *Heliosperma* Rchb., *Petrocoptis* A. Braun, *Atocion* and *Viscaria*.

The first comprehensive revision of the genus *Silene* in China was made by Tang (1996) who recognized 112 species, 2 subspecies and 17 varieties. In the most recent treatment by Zhou et al. (2001), 110 species were accepted, 67 of which are endemic to China (endemism ratio of *Silene* in China is about 61%). More recently, three additional species of *Silene* were described or recorded from southwest China by Lin et al. (2019) and Yang et al. (2022 a, b); these findings highlight the need for continued field exploration and taxonomical research in the region.

During our field surveys and the herbarium studies for a taxonomic revision of *Silene* in the Sino-Himalayan region, an interesting plant was repeatedly encountered, but one that does not fit with any previously described species. Comparison with related species demonstrates that this plant actually represents a distinct species hitherto not described. Therefore, it is described as a new species herein and named as *Silene ophioglossa* Huan C. Wang & Feng Yang.

Material and methods

Morphological analyses

The study followed the normal practice of plant taxonomic survey and herbarium taxonomy. Morphological studies of the new species were based on observation of living plants and specimens from Yunnan and Sichuan, southwest China. Digital images available at the JSTOR Global Plants (<http://plants.jstor.org/>) and at the Chinese Virtual Herbarium (<http://www.cvh.ac.cn/>), as well the collections housed at CDBI, KUN, PE, PYU, XTBG and YUKU were examined and compared with the new species. Pertinent taxonomic literature (e.g. Wu 1993; Zhuang 1995; Tang 1996; Zhou et al. 2001) was consulted. Morphological studies were carried out on dried material under a stereomicroscope (Olympus SZX2, Tokyo, Japan) and measurements were made using a ruler and a metric vernier caliper.

Seed micromorphology

Mature seed samples were directly adhered to carbon adhesive tape. Then they were coated with gold palladium using a BAL-TEC SCD 005 cool sputter coater (BAL-TEC AG., Liechtenstein) at Yunnan University, Kunming, China. Observations were conducted using a QUANTA 200 scanning electron microscope (SEM) (FEI Co., U. S. A.) at 20.0 KV.

Phylogenetic study

To determine the phylogenetic position of the putative new species, the internal transcribed spacer region (ITS) of the nuclear ribosomal DNA was used as the molecular marker. Total genomic DNA of this new species and *S. phoenicodonta* were extracted from silica-gel dried leaves using the DNA secure plant kit (TIANGEN, Beijing, China). The PCR protocols followed Lin et al. (2019). The ITS primers used were ITS1 and ITS4, as described by White et al. (1990) and Urbatsch et al. (2000). The PCR products were bidirectionally sequenced with the same primers used for PCR amplifications in an ABI 3730xL DNA Analyzer (Applied Biosystems) at Kunming Branch of Beijing Qingke Biotechnology Co., Ltd. (Yunnan, China).

We used a total of 70 taxa of *Silene* as ingroups, being representatives of most sections of *Silene*, *Heliosperma oliverae* Niketić et Stevan., *Atocion armeria* (Fedor.) Fedor. and *Petrocoptis pyrenaica* A. Braun as outgroups following the previous phylogenetic analyses (Jafari et al. 2020). A total of 73-taxon data sets, including six newly published sequences, were obtained. Voucher specimen and GenBank accession information for taxa are listed in Appendix 1.

All sequences were aligned with MAFFT (Katoh and Standley 2013) using 'auto' strategy and normal alignment mode. Gap sites were removed with trimAl (Capella-Gutiérrez et al. 2009) using "-automated1" command. The best-fitting substitution models SYM+I+G model for Bayesian inference were selected using ModelFinder (Kalyaanamoorthy et al. 2017) in BIC criterion. MrBayes 3.2.6 (Ronquist et al. 2012) was used to conduct Bayesian phylogenetic analyses. Runs were performed for 5 million generations with sampling of trees every 500 generations. The initial 25% of sampled data were discarded as burn-in.

Results and taxonomic treatment

Silene ophioglossa Huan C. Wang & Feng Yang, sp. nov.

urn:lsid:ipni.org:names:77318297-1

Figs 1, 2

Type. CHINA. Yunnan Province: Binchuan County, Pingchuan Town, Maojiaoshan Mountain, alt. 2198 m, 25°58'13.6"N, 100°42'8.28"E, under a walnut forest by a ravine stream, 17 June 2022, *F. Yang et al.* BC17342 (holotype YUKU-02074705!; isotypes YUKU-02074706!, PE!, HITBC!).

Diagnosis. *Silene ophioglossa* is morphologically similar to *S. phoenicodonta* (Fig. 3), but clearly differs from the latter in having 5–7 mm (vs. 6–8 mm) long calyces sparsely hirtellous and short glandular hairs (vs. densely hirtellous and with short glandular hairs), white (vs. dark violet) petals, linear (vs. obovate) limbs and linear (vs. ovate or nearly band-shaped) lobes, absent or oblong-linear (vs. orbicular-linear) coronal scales.

Etymology. The specific epithet "*ophioglossa*" is derived from the Greek words "*ophis*" (meaning snake) and "*glossa*" (meaning tongue), which refer to the petal lobes of this new species which resemble the tongue of a snake.

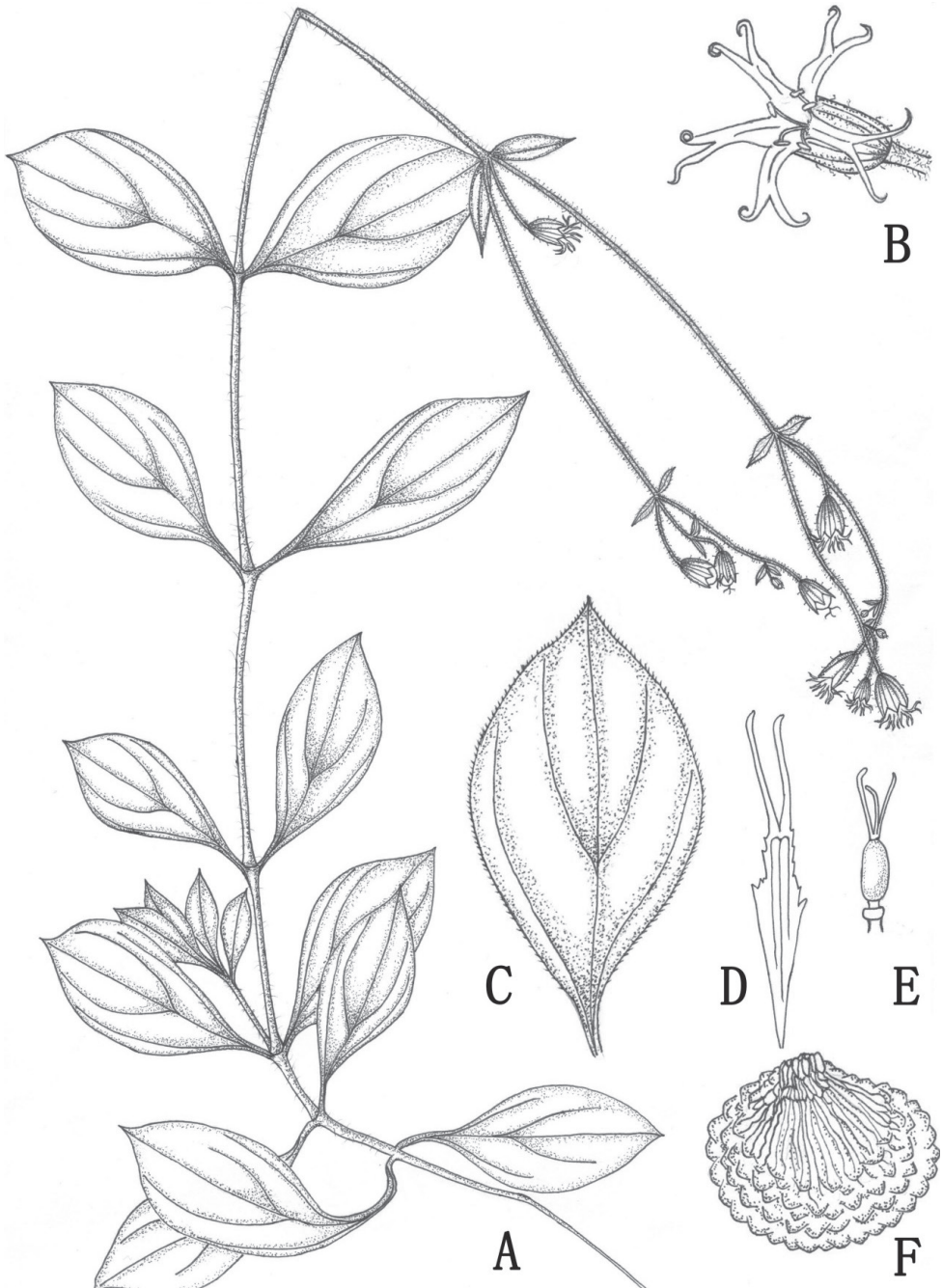


Figure 1. *Silene ophioglossa* sp. nov. (Drawn by Tingting Wang) **A** habit **B** flower (front view) **C** adaxial surface of leaf **D** petal **E** pistil and androgynophore **F** seed.

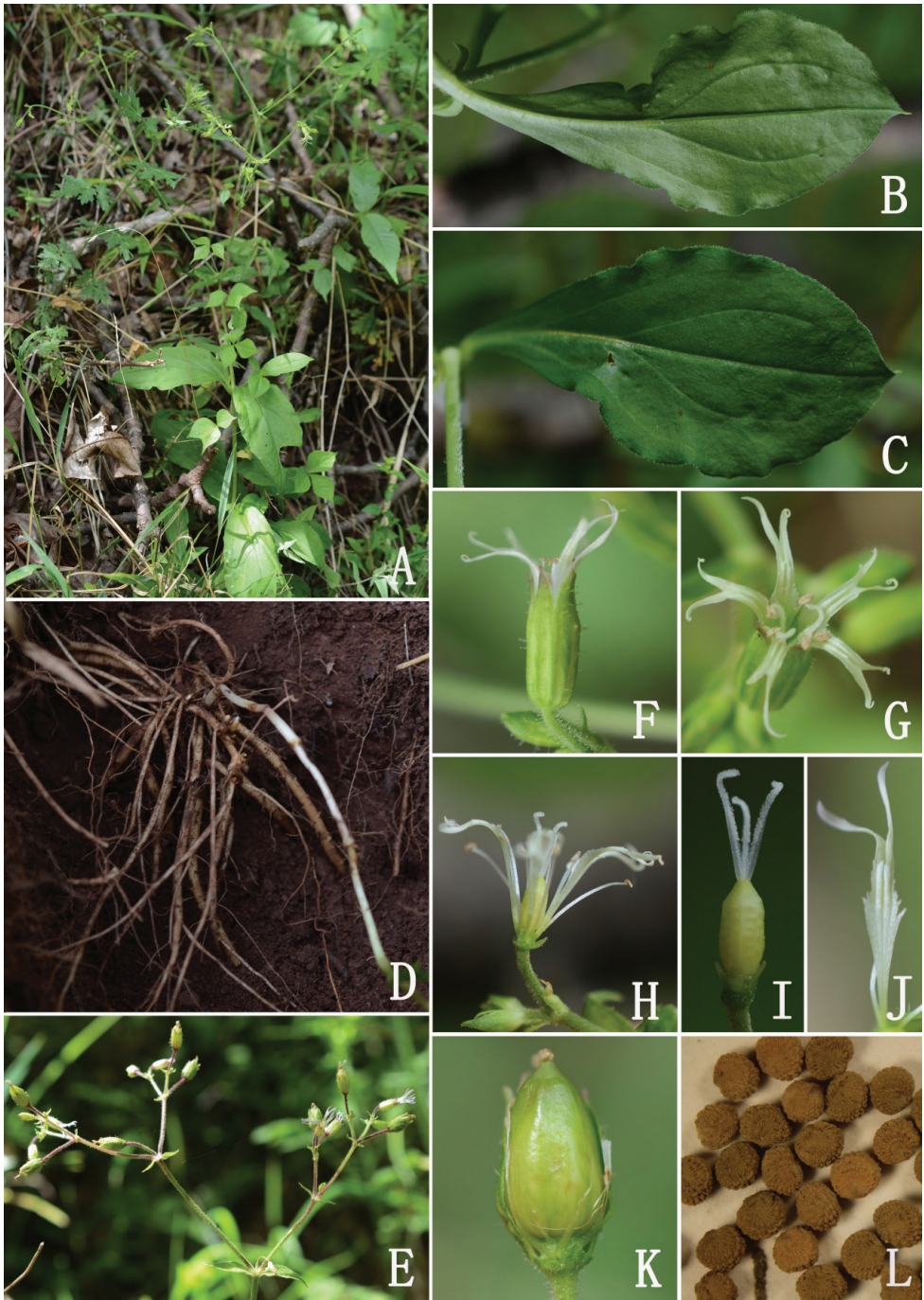


Figure 2. *Silene ophioglossa* sp. nov. (Photographed by F. Yang) **A** habit **B** abaxial surface of leaf **C** adaxial surface of leaf **D** roots **E** dichasial cymes **F** flower (side view, showing the calyx) **G** flower (front view) **H** dissected flower (showing the androgynophore and claws) **I** pistil and androgynophore **J** petal (showing the claw, auricles and coronal scales) **K** immature capsule **L** seeds.

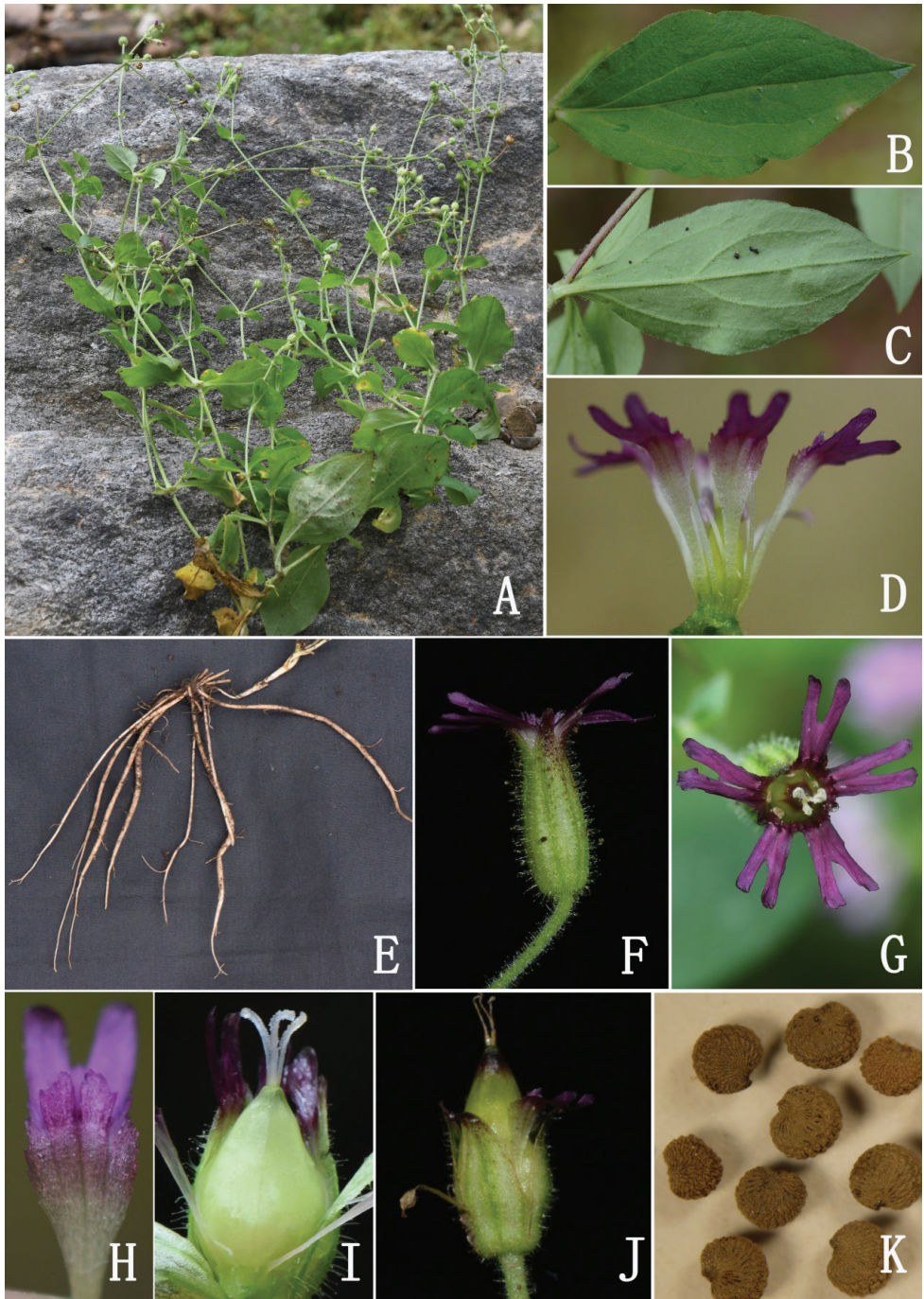


Figure 3. *Silene phoenicodonta* (Photographed by F. Yang and H. C. Wang) **A** habit **B** adaxial surface of leaf **C** abaxial surface of leaf **D** dissected flower (showing the androgynophore and claws) **E** roots **F** flower (side view, showing the calyx and pedicel) **G** flower (front view) **H** petal (showing the claw, auricles and coronal scales) **I** styles and immature capsule **J** calyx after anthesis **K** seeds.

Description. Herbs perennial. Roots numerous, clustered, cylindrical, fleshy. Stems sparsely caespitose, ascending to sprawling, 30–80 cm long, slender, multibranched, with sparsely pubescent. Leaves ovate-elliptic or obovate-elliptic, 3–9 (–15) cm long, 1–4 cm wide, base cuneate or attenuate into petiole, apex acute, both surfaces puberulent to subglabrous, margin entire, minutely ciliate, lateral veins 2 pairs, midrib and lateral veins prominent abaxially. Dichasial cymes terminal, diffuse; peduncle 1–15 cm long, densely glandular-pilose. Pedicels densely glandular-pilose and sparsely eglandular villous, subequalling or longer than calyx; bracts ovate-lanceolate, apex acuminate. Calyx tubular-campanulate, 5–7 mm long, 2–3 mm in diameter, longitudinal veins green or violet, cohering at apex, sparsely hirtellous and with short glandular hairs, inflated after anthesis, 6–7 mm long, 4–5 mm in diameter in fruit stage; calyx teeth ovate-triangular, green or violet, ca. 1 mm long, apex acute, margin ciliate. Androgynophore ca. 1 mm long, glabrous. Petals white, 1.0–1.2 cm long; claws equaling to calyx, oblanceolate, glabrous, inflated above, margin erose; limbs linear, deeply bifid to middle, lobes linear, apex usually curly, without side lobe; coronal scales absent or oblong-linear, small, entire or emarginated at apex. Stamens 10, included in calyx tube; filaments glabrous, 5–7 mm long. Styles 3, included or slightly exerted beyond calyx. Capsule broadly ovoid, 7–9 mm long, 4–5 mm in diameter, slightly longer than calyx. Seeds dark brown, globose-reniform, ca. 1 mm long, tuberculate.

Molecular phylogenetics. The ITS sequence region of *Silene ophioglossa* comprises 687 and 821 base pairs with a GC content of 53.3% and 54.4%. The alignment of 73 ITS sequences resulted in a matrix of 582 total characters, 350 of which are constant, 58 of the variable characters are singleton sites and 174 characters are parsimony-informative sites.

Phylogenetic analyses using ITS sequences uncovered that the new species, *S. ophioglossa*, belongs to a clade A representing *S.* sect. *Cucubalooides* Edgeworth & Hook. f. which was recircumscribed by Jafari et al. (2020) in their recent studies (Fig. 4). This placement is also supported by its morphological characters, such as the ascending to sprawling, multibranched stems, ovate-elliptic or obovate-elliptic leaves, lax dichasial cymes and tubular-campanulate calyces. In the phylogenetic tree (Fig. 4), two sequences from *S. ophioglossa* constituted a monophyletic lineage with maximum support, and it is sister to a small subclade B that includes *S. phoenicodonta* and *S. viscidula*. This close relationship is also supported by their morphological similarity.

Seed micromorphology. Seeds of *Silene ophioglossa* are dark brown when mature, globose-reniform in shape, 0.94–1.12 mm long, 0.79–0.94 mm wide. The lateral surface of seed is concave. The dorsal surface is flat, ca. 0.57 mm wide. Its seed coat is formed by elongate epidermis cells with S-undulate and V-undulate anticlinal walls. The periclinal walls are convex and have granulate-papillate ornamentation (Fig. 5A–C).

Phenology. Flowering and fruiting from June to September.

Distribution and habitat. *Silene ophioglossa* is endemic to southwest China, where it has been collected from western Sichuan and north Yunnan (Fig. 6). Currently, it seems to be restricted to the Jinsha River basin. *Silene ophioglossa* usually occurs at elevations

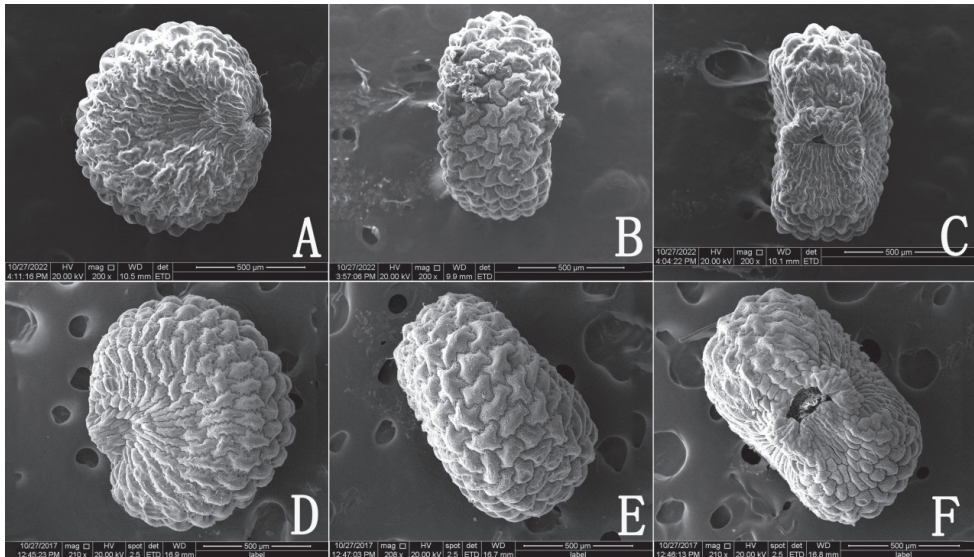


Figure 5. SEM micrographs of seed morphology in *Silene ophioglossa* (voucher specimen: Q. P. Wang et al. XY7908, **A–C**) and *S. phoenicodonta* (voucher specimen: D. Qiao DC2575, **D–F**). **A, D** lateral surface **B, E** dorsal surface **C, F** ventral surface.

ranging from 2000–3000 meters and grows in thickets or at forest margins, and its association includes *Lepisorus palmatopedatus* (Baker) C. F. Zhao, R. Wei et X. C. Zhang, *Lysimachia christinae* Hance, *Corydalis triternatifolia* C. Y. Wu, *Indigofera pendula* Franch., *Lysimachia stenosepala* Hemsl. var. *flavescens* Chen et C. M. Hu, *Circaea cordata* Royle, *Quercus acutissima* Carr. and *Campylotropis teretiracemosa* P. C. Li et C. J. Chen.

Conservation status. *Silene ophioglossa* is known from five localities and has been found in thickets or at forest margins. However, we actually only investigated two points, and didn't have enough information about its distribution, abundance, or threats to this species. More information is needed for assignment of its conservation status. Therefore, we choose to assign this new species to the category data deficient (DD) following the IUCN guidelines (IUCN 2012, 2022).

Taxonomic notes. Morphologically and seed micromorphologically, *Silene ophioglossa* is most similar to *S. phoenicodonta* (Fig. 3), a species also distributed in south-west China (Fig. 6). They share ascending to sprawling, multibranching stems, ovate-elliptic or obovate-elliptic leaves, dichasial cymes, 3 styles and globose-reniform seeds (Fig. 5), but the new species is distinguishable from the latter by its calyces 5–7 mm (vs. 6–8 mm) long, sparsely (vs. densely) hirtellous and with short glandular hairs, petals white (vs. dark violet), limbs linear (vs. obovate), lobes linear (vs. ovate or nearly band-shaped) and coronal scales absent or oblong-linear (vs. orbicular-linear).

Silene ophioglossa is somewhat close to *S. viscidula*, an endemic species found from southwestern China. Nevertheless, *S. ophioglossa* differs from *S. viscidula* in having ovate-elliptic or obovate-elliptic (vs. elliptic or elliptic-oblongate) leaves, diffuse (vs.

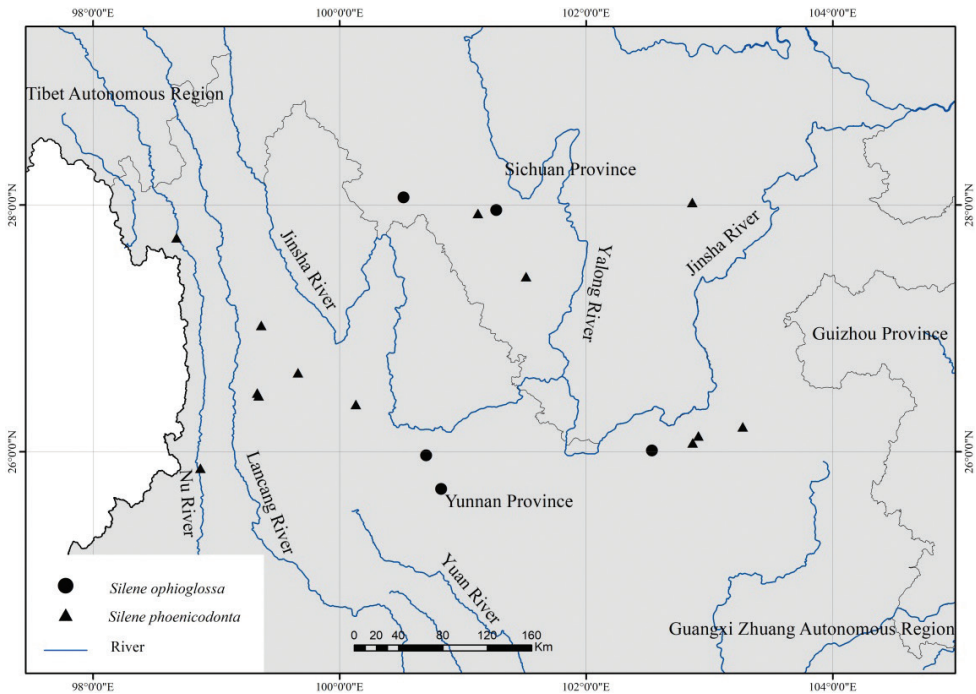


Figure 6. Distribution of *Silene ophioglossa* and *S. phoenicodonta* in southwest China.

compact, 3–7 (–15)-flowered) dichasia, 5–7 mm long (vs. 7–10 mm long) calyces, sparsely hirtellous and with short glandular hairs (vs. densely glandular hairs), white (vs. pale pink or white) petals, linear (vs. broadly obovate) limbs, linear (vs. ovate or square) lobes, absent or oblong-linear (vs. flabellate) coronal scales. A detailed morphological comparison between these three species is summarized in Table 1.

Additional specimens examined (Paratypes). **CHINA. Sichuan:** Muli County, Qiaowa Town, Chutouwan village, under the shady and moist thickets by the river, alt. 2600 m, 28 June 1978, *Y. B. Yang* 7097 (CDBI-0020627, CDBI-0020628); Muli County, Ninglang village, under *Tsuga* forest on the mountain slope, alt. 3000 m, 25 September 1983, *Qinghai-Tibet Expedition 14350* (KUN-0514408, KUN-0514409). **Yunnan:** Luquan County, Sayingpan Town, Sayongshan Mountain, at evergreen broad-leaved forest margins, alt. 2400 m, 21 June 1965, *W. M. Zhu & Y. M. Feng 00584* (YUKU-02006723); Xiangyun County, Midian Town, Yemaoshan Mountain, alt. 2300 m, 25°41'52.12"N, 100°49'26.69"E, 24 July 2018, *Xiangyun Medicinal Plant Investigation Team 5329230617* (YUKU-02074711, YUKU-02074712, YUKU-02074713) and *F. Yang et al. XY8075* (YUKU-02074710); same location, 26 August 2019, *Q. P. Wang et al. XY7908* (YUKU-02074714, YUKU-02074715).

Silene phoenicodonta. **CHINA. Sichuan:** Zhaojue County, Sikai Town, thickets, alt. 2400 m, 30 June 1976, *Sichuan Vegetation Team 12763* (PE-00580695, CDBI-0020501). **Yunnan:** Huizhe County, Dahai village, Dahaicaoshan, ca. 2 km from

Table 1. Morphological comparison of *Silene ophioglossa*, *S. phoenicodonta* and *S. viscidula*.

| Characters | Species | | |
|------------------------|---|--|--|
| | <i>S. ophioglossa</i> | <i>S. phoenicodonta</i> | <i>S. viscidula</i> |
| Roots | clustered, cylindric | clustered, cylindric | clustered, fusiform |
| Leaves | ovate-elliptic or obovate-elliptic | ovate-elliptic or obovate-elliptic | elliptic or elliptic-oblancoelate |
| Inflorescence | dichasial cymes, diffuse | dichasia diffuse, few flowered | dichasial cymes, 3–7 (–15)-flowered, compact |
| Calyces | 5–7 mm long, outside sparsely hirtellous and with short glandular hairs | 6–8 mm long, outside densely hirtellous and with short glandular hairs | 7–10 mm long, outside with dense glandular hairs |
| Petals | white | dark violet | pale pink or white |
| Limbs | linear, deeply bifid to middle | obovate, deeply bifid to middle | broadly obovate, shallowly 2-lobed |
| Lobes of petals | linear, apex usually curly, without side lobe | ovate or nearly band-shaped, sometimes with one inconspicuous tooth on each lateral side | ovate or square, entire, sometimes with one inconspicuous tooth on each lateral side |
| Coronal scales | absent or oblong-linear, entire or emarginated at apex | Present, orbicular-linear, laciniate at apex | Present, flabellate, laciniate at apex |

Xiaoxiniu, Dabaping, alpine meadows, 103°16'10.50"E, 26°12'6.19"N, alt. 3433 m, 24 July 2018, *H. Tang TH2018046* (KUN-1481546); Dongchuan District, Xueling Scenic Area, 29 August 2017, *D. Qiao DC2575* (YUKU-02074716); Heqing County, Songgui Town, Maershan Mountain, on the path from Chamujing to Zhulinkou, under forest, roadsides, 100°7'53.68"E, 26°23'2.58"N, alt. 2578 m, 5 August 2018, *H. Tang TH2018087* (KUN-1481543); Jianchuan County, Shizhongshan Mountain, July 1987, *S. Y. Bao 401* (KUN-0531671); Zhengkang County, Snow Range, in grassy slope, alt. 2600 m, 22 July 1938, *T. T. Yu 16881* (PE-00558309, KUN-0514405).

Silene viscidula. **CHINA. Sichuan:** Yanbian County, Dapingzi District, Baoshishan, limestone mountainous region, at 2700 m, 29 June 1983, *Qinghai-Tibet Team 11677* (KUN-0514407). **Guizhou:** Weining County, Mazha Town, Gali village, Mabaidashan, 12 July 1959, *Bijie Team 191* (PE-00581476). **Yunnan:** Luquan County, Kedu Town, Dianwei village, grassy slope, at 2500 m, 25 October 1940, *Y. B. Chang 347* (IBSC-0149532); Dongchuan District, November 1906, *E. E. Maire 87* (E-00109656); Mengzi, Yangliuhe village, sparse forest, at 1720 m, 30 July 1958, *Y. Y. Hu & S. K. Wen 580546* (KUN-0514415).

Acknowledgements

We would like to thank Alexander Sukhorukov and Daniel Montesinos Tubée for their valuable comments and suggestions. We express our gratitude to Zengyan Dang for the distribution map. This research was supported by the National Natural Science Foundation of China (grant no: 31960040) and the Second Tibetan Plateau Scientific Expedition and Research (STEP) programme (2019QZKK0502).

References

- Capella-Gutiérrez S, Silla-Martinez JM, Gabaldon T (2009) trimAl: A tool for automated alignment trimming in large-scale phylogenetic analyses. *Bioinformatics* (Oxford, England) 25(15): 1972–1973. <https://doi.org/10.1093/bioinformatics/btp348>
- Desfeux C, Lejeune B (1996) Systematics of Euromediterranean *Silene* (Caryophyllaceae): Evidence from a phylogenetic analysis using ITS sequences. *Comptes Rendus De L'Académie Des Sciences Série III Sciences De La Vie* 319(4): 351–358.
- Frajman B, Eggen F, Oxelman B (2009a) Hybrid origins and homoploid reticulate evolution within *Heliosperma* (Sileneae, Caryophyllaceae) – A multigene phylogenetic approach with relative dating. *Systematic Biology* 58(3): 328–345. <https://doi.org/10.1093/sysbio/syp030>
- Frajman B, Heidari N, Oxelman B (2009b) Phylogenetic relationships of *Atocion* and *Viscaria* (Sileneae, Caryophyllaceae) inferred from chloroplast, nuclear ribosomal, and low-copy gene DNA sequences. *Taxon* 58(3): 811–824. <https://doi.org/10.1002/tax.583010>
- Greenberg AK, Donoghue MJ (2011) Molecular systematics and character evolution in Caryophyllaceae. *Taxon* 60(6): 1637–1652. <https://doi.org/10.1002/tax.606009>
- Greuter W (1995) *Silene* (Caryophyllaceae) in Greece: A subgeneric and sectional classification. *Taxon* 44(4): 543–581. <https://doi.org/10.2307/1223499>
- IUCN (2012) IUCN Red List Categories and Criteria. Version 3.1. (2nd Ed.). IUCN, Gland, Switzerland & Cambridge, 32 pp.
- IUCN (2022) Guidelines for Using the IUCN Red List Categories and Criteria. Version 15. Prepared by the Standards and Petitions Committee.
- Jafari F, Zarre S, Gholipour A, Eggen F, Richard KR, Oxelman B (2020) A new taxonomic backbone for the infrageneric classification of the species rich genus *Silene* (Caryophyllaceae). *Taxon* 69(2): 337–368. <https://doi.org/10.1002/tax.12230>
- Kalyaanamoorthy S, Minh B, Wong T, von Haeseler A, Jermini L (2017) ModelFinder: Fast model selection for accurate phylogenetic estimates. *Nature Methods* 14(6): 587–589. <https://doi.org/10.1038/nmeth.4285>
- Katoh K, Standley DM (2013) MAFFT multiple sequence alignment software version 7: Improvements in performance and usability. *Molecular Biology and Evolution* 30(4): 772–780. <https://doi.org/10.1093/molbev/mst010>
- Lin N, Zhang DG, Huang XH, Zhang JW, Yang JY, Tojibaev K, Wang HC, Deng T (2019) *Silene sunhangii* (Caryophyllaceae), a new species from China. *PhytoKeys* 135: 59–69. <https://doi.org/10.3897/phytokeys.135.36426>
- Mabberley DJ (2017) *Mabberley's Plant-book: a portable dictionary of plants, their classification and uses* (4th). Cambridge University Press, Cambridge, 1102 pp. <https://doi.org/10.1017/9781316335581>
- Oxelman B, Lidén M (1995) Generic boundaries in the tribe Sileneae (Caryophyllaceae) as inferred from nuclear rDNA sequences. *Taxon* 44(4): 525–542. <https://doi.org/10.2307/1223498>

- Oxelman B, Lidén M, Berglund D (1997) Chloroplast *rps16* intron phylogeny of the tribe Sileneae (Caryophyllaceae). *Plant Systematics and Evolution* 206: 393–410. <https://doi.org/10.1007/BF00987959>
- Oxelman B, Lidén M, Rabeler RK, Popp M (2001) A revised generic classification of the tribe Sileneae (Caryophyllaceae). *Nordic Journal of Botany* 20(6): 743–748. <https://doi.org/10.1111/j.1756-1051.2000.tb00760.x>
- Popp M, Oxelman B (2004) Evolution of a RNA polymerase gene family in *Silene* (Caryophyllaceae) — incomplete concerted evolution and topological congruence among paralogues. *Systematic Biology* 53: 914–932. <https://doi.org/10.1080/10635150490888840>
- Ronquist F, Teslenko M, Mark P, Ayres DL, Darling A, Höhna S, Larget B, Liu L, Suchard MA, Huelsenbeck JP (2012) MrBayes 3.2: Efficient Bayesian phylogenetic inference and model choice across a large model space. *Systematic Biology* 61(3): 539–542. <https://doi.org/10.1093/sysbio/sys029>
- Tang CL (1996) *Silene* Linnaeus. In: Wu ZY (Ed.) *Flora Reipublicae Popularis Sinicae*. vol. 26. Science Press, Beijing, 281–401.
- Urbatsch LE, Baldwin BG, Donoghue MJ (2000) Phylogeny of the coneflowers and relatives (Heliantheae: Asteraceae) based on nuclear rDNA internal transcribed spacer (ITS) sequences and chloroplast DNA restriction site data. *Systematic Botany* 25(3): 539–565. <https://doi.org/10.2307/2666695>
- White TJ, Bruns T, Lee S, Taylor J (1990) Amplification and direct sequencing of fungal ribosomal RNA genes for phylogenetics. In: Innis MA, Gelfand DH, Sninsky JJ, White TJ (Eds) *PCR Protocols: a guide to methods and applications*. Academic Press, New York, 315–322. <https://doi.org/10.1016/B978-0-12-372180-8.50042-1>
- Wu ZY (1993) *Silene* Linnaeus. In: Wang WC (Ed.) *Vascular plants of the Hengduan Mountains*. vol. 1. Science Press, Beijing, 417–432.
- Yang F, Liu JL, Li PP, Wang HC (2022a) *Silene vanchingshanensis* (Caryophyllaceae) a new species from Southwest China. *PhytoKeys* 189: 155–162. <https://doi.org/10.3897/phytokeys.189.79631>
- Yang F, Ye JY, Wang HC (2022b) *Silene holosteifolia*, a newly recorded species of Caryophyllaceae for Flora of China. *Acta Botanica Boreali-Occidentalia Sinica* 42(5): 0884–0887.
- Zhou LH, Wu ZY, Lidén M, Oxelman B (2001) *Silene* Linnaeus. In: Wu ZY, Raven PH, Hong DY (Eds) *Flora of China*. vol. 6. Science Press, Beijing, and Missouri Botanical Garden Press, St. Louis, Missouri, 70–106.
- Zhuang X (1995) *Silene* Linnaeus. In: Wu ZY (Ed.) *Flora Yunnanica*. vol. 6. Science Press, Beijing, 194–242.

Appendix I

Table A1. Voucher information and GenBank accession of species used in our study.

| GenBank | Species | Voucher information | Herbarium |
|----------|---|--------------------------------------|-----------|
| AJ299829 | <i>Silene aegaea</i> Oxelman | Christodoulakis 2826 | UPA |
| AJ831784 | <i>Silene uralensis</i> (Rupr.) Bocquet | Inger Skrede SUP02-38-08 | UPS |
| EF060201 | <i>Silene muscipula</i> L. | Bengt Oxelman 1780 | GB |
| EF060217 | <i>Silene nana</i> Kar. Et Kir. | Kereverzova and Mekeda 1976.V.5 | LECB |
| EF118064 | <i>Heliosperma oliverae</i> Niketić et Stevan. | LJU 137738 | |
| EF602380 | <i>Silene abyssinica</i> (Hochst.) H. Neumayer | P. Tuley 2091 | K |
| EF602400 | <i>Silene kiwuensis</i> (Fr.) F. Jafari, Oxelman et Rabeler | A. Gizaw AFR561 | ETH |
| FJ384018 | <i>Petrocoptis pyrenaica</i> A. Braun | Schneeweiss et al. 6549 | WU |
| FJ384020 | <i>Silene boeffigiana</i> Fisch. ex C. A. Mey. | Menitskiy and Portenier 1987.VIII4 | LE |
| FJ384027 | <i>Atocion armeria</i> (Fedor.) Fedor. | B. Frajman and M. Turjak 136972 | LJU |
| FN821100 | <i>Silene conica</i> L. | Erixon 70 | UPS |
| FN821109 | <i>Silene dioica</i> (L.) Clairv. | H. C. Prentice D130-2 | GB |
| FN821123 | <i>Silene latifolia</i> Poir. | H. C. Prentice L80-12 | GB |
| FN821135 | <i>Silene macrodonta</i> Boiss. | Bengt Oxelman 2441 | GB |
| FN821141 | <i>Silene noctiflora</i> L. | H. C. Prentice N2-2 | |
| JF978554 | <i>Silene baccifera</i> (L.) Roth | Z387 | |
| JX560220 | <i>Silene germana</i> J. Gay ex Coss. | | |
| KJ918497 | <i>Silene flos-cuculi</i> (L.) Clairv | S-99 | |
| KT695188 | <i>Silene vulgaris</i> (Moench) Garcke | BIOUG24049-D08 | |
| KX450217 | <i>Silene phrygia</i> Boiss. | MUFE12337 | |
| KX757272 | <i>Silene waltoni</i> F. N. Williams | G. and S. Miehe 03-048-12 | Miehe |
| KX757273 | <i>Silene kumaonensis</i> F. N. Williams | G. and S. Miehe 01-109-08 | Miehe |
| KX757281 | <i>Silene otodonta</i> Franch. | Miehe/Huang/Otsu/Tunsu 97-070-18 | Miehe |
| KX757293 | <i>Silene joerstadii</i> Wendelbo | Hedge and Wendelbo W 8992 | GB |
| KX757295 | <i>Silene menziesii</i> Hook. | A.R. Kruckeberg 2830 | WTU |
| KX757298 | <i>Silene williamsii</i> Britton | C. Brochmann and H. H Grundt | |
| KX757313 | <i>Silene dichotoma</i> Ehrh. | Till s.n. 17.7.2004 | WU |
| KX757314 | <i>Silene cordifolia</i> All. | Lippert and Merxmüller 17265 | |
| KX757317 | <i>Silene acutifolia</i> All. | Rothmaler 13691 | S |
| KX757323 | <i>Silene cryptoneura</i> Stapf | Bengt Oxelman 2524 | GB |
| KX757328 | <i>Silene ertekinii</i> Aydin et Oxelman | Zeynep Aydin 31 | |
| KX757332 | <i>Silene undulata</i> Aiton | Bayliss, Roy Douglas Abbott BS7700 | M |
| KX757416 | <i>Silene delicatula</i> Boiss. | Bengt Oxelman 2456 | GB |
| KX757421 | <i>Silene atocioides</i> Boiss. | Bengt Oxelman 1627 | GB |
| KX757424 | <i>Silene almolae</i> J. Gay ex Coss. | Merxmüller, H. and Lippert, W. 25372 | M |
| KX757445 | <i>Silene moorcroftiana</i> Wall. ex Benth. | Ewald and Zetterlund 6278 | GB |
| KX757446 | <i>Silene microphylla</i> Boiss. | Abbas Gholipour 2 | |
| KX757477 | <i>Silene pendula</i> L. | Bengt Oxelman 2291 | GB |
| KX757528 | <i>Silene esquamata</i> W. W. Sm. | Podlech, D. 54568 | M |
| KX757542 | <i>Silene jenseensis</i> Willd. | H. Solstad and R. Elven 04/1573 | O |
| KX757545 | <i>Silene graminifolia</i> Oth | Anja Rautenberg 241 | UPS |
| KX757570 | <i>Silene alexandri</i> Hillebr. | Wood 6036 | US |
| KX757572 | <i>Silene hawaiiensis</i> Sherff | MW Chase 2013 | K |
| KX757577 | <i>Silene lanceolata</i> A.Gray | S. Weller 4 | |
| KX757579 | <i>Silene oreades</i> Boiss. et Heldr. | Anja Rautenberg 167 | UPS |

| GenBank | Species | Voucher information | Herbarium |
|----------|---|---|-----------|
| KX757584 | <i>Silene inaperta</i> L. | Silva 1688 | LD |
| KX757616 | <i>Silene longipetala</i> Vent. | Grey-Wilson and Hewer 899 | GB |
| KX757634 | <i>Silene pinetorum</i> Boiss. et Heldr. | Bengt Oxelman et al 2183 | GB |
| KX757636 | <i>Silene echinospermoides</i> Hub.-Mor. | Bengt Oxelman 2202 | GB |
| KX757637 | <i>Silene reinwardtii</i> Roth | T. Engel, Frey and H. Kuerschner 90-223 | BSB |
| KX757644 | <i>Silene mentagensis</i> Coss. | Jahandiez 329 | LD |
| KX757645 | <i>Silene portensis</i> L. | Podlech 46825 | G |
| KX757651 | <i>Silene banksia</i> (Meerb.) Mabb. | S.J. Enander | S |
| KX757657 | <i>Silene stockenii</i> Chater | Holmdahl 1595 | GB |
| KX757658 | <i>Silene littorea</i> Brot. | Bengt Oxelman 2589 | GB |
| KX852624 | <i>Silene linearifolia</i> Otth | IB-13681 | |
| LC424050 | <i>Silene gallica</i> L. | 27286 | TUH |
| LC424056 | <i>Silene simsii</i> F. Jafari, Rabeler et Oxelman | 39821 | TUH |
| X86827 | <i>Silene foetida</i> Link ex Spreng. | Bengt Oxelman s.n | GB |
| X86833 | <i>Silene odontopetala</i> Fenzl | | |
| X86844 | <i>Silene corinthiaca</i> Boiss. et Heldr. | Bengt Oxelman 1951 | GB |
| X86846 | <i>Silene linicola</i> C. C. Gmel. | Bengt Oxelman ITS-20605 | GB |
| X86856 | <i>Silene scopulorum</i> Franch. | KGB 810 | GB |
| X86868 | <i>Silene burchellii</i> Otth | Bengt Oxelman 2280 | GB |
| HQ585922 | <i>Silene viscidula</i> Franch. | SV6 | |
| X87422 | <i>Silene integripetala</i> Bory et Chaub. | Jagel 48 | B |
| OQ376973 | <i>Silene phoenicodonta</i> Franch. | H. C. Wang et al. LQ12915 | YUKU |
| OQ376974 | <i>Silene phoenicodonta</i> Franch. | F. Yang et al. LP4339 | YUKU |
| OQ376975 | <i>Silene phoenicodonta</i> Franch. | J. L. Liu et al. LQ14001 | YUKU |
| OQ376976 | <i>Silene phoenicodonta</i> Franch. | H. C. Wang et al. JC4486 | YUKU |
| OQ376977 | <i>Silene ophioglossa</i> Huan C. Wang et Feng Yang | Xiangyun Med. Pl. Exp. 5329230617 | YUKU |
| OQ376978 | <i>Silene ophioglossa</i> Huan C. Wang et Feng Yang | Q. P. Wang et al. XY7908 | YUKU |