



The genus *Pareuryaptus* (Carabidae, Pterostichini) in China, with three new country records

Haoyuan Li[‡], Yihang Li[§], Hongliang Shi[|], Hongbin Liang[¶]

[‡] College of Life Science, Capital Normal University, Beijing, China

[§] College of Agriculture, Purdue University, West Lafayette, United States of America

[|] College of Forestry, Beijing Forestry University, Beijing, China

[¶] Institute of Zoology, Chinese Academy of Sciences, Beijing, China

Corresponding author: Hongbin Liang (lianghb@ioz.ac.cn)

Academic editor: Stephen Venn

Received: 21 Mar 2022 | Accepted: 20 May 2022 | Published: 30 May 2022

Citation: Li H, Li Y, Shi H, Liang H (2022) The genus *Pareuryaptus* (Carabidae, Pterostichini) in China, with three new country records. Biodiversity Data Journal 10: e84104. <https://doi.org/10.3897/BDJ.10.e84104>

Abstract

Background

Pareuryaptus is a genus of Carabidae containing 18 species and one subspecies, distributed mainly in the Oriental Region. However, only one species and one subspecies were recorded from China before the present study.

New information

Four species and one subspecies of *Pareuryaptus* are reported from China with three of them newly recorded: *Pareuryaptus adoxus* (Tschitschérine) from Yunnan; *Pareuryaptus exiguus* Dubault, Lassalle & Roux from Guangxi; and *Pareuryaptus luangphabangensis* Kirschenhofer from Yunnan. Moreover, the male of *Pareuryaptus exiguus* Dubault, Lassalle & Roux is firstly described and a key to all known Chinese species is provided.

Keywords

Trigonotomina, *Pareuryaptus*, key, new record, China

Introduction

Pareuryaptus is a genus under the subtribe Trigonotomina (Carabidae, Pterostichini). Dubault et al. (2008a) established the genus *Pareuryaptus* to accommodate some species previously placed in genus *Trigonotoma* Dejean and described several new species. A total of 18 species and one subspecies are known in the genus, mainly distributed in the Oriental Realm. However, only one species and one subspecies were recorded from China before the present study.

It is not surprising for us to find some new records of *Pareuryaptus* in China, because many species are distributed in China's southern neighbouring countries, such as Vietnam, Laos and Myanmar. We obtained a specimen from Xishuangbanna (South Yunnan) in the second half of 2020, which aroused our interest in this genus. After that, to make a more complete study, we collected more specimens and studied the collection of the Institute of Zoology, Chinese Academy of Sciences.

The primary purposes of this paper are to represent three new records of *Pareuryaptus* species from China, firstly to describe the male of *P. exiguus* that was originally described by a female holotype and to provide a key for all Chinese *Pareuryaptus* species.

Materials and methods

The specimens examined in the present study are from these collections:

- **CHLC** Collection of Haoyuan Li, Beijing, China.
- **CJCC** Collection of Jiaheng Chen, Guangdong, China.
- **CYLC** Collection of Yihang Li, Beijing, China.
- **IZAS** Institute of Zoology, Chinese Academy of Sciences, Beijing, China.

In the citations of species, the following abbreviations of collections were mentioned, but there is no specimen examination from these collections:

- **CADA** Collection of A. Dostal, Vienna, Austria.
- **MNHN** Museum National d'Histoire Naturelle, Paris, France.
- **NMPC** Narodni Muzeum Prirodovedcke Muzeum, Prague, Czech Republic.
- **ZMAS** Zoological Institute, Russian Academy of Sciences, Saint Petersburg, Russia.

Habitus and aedeagus were captured by a Nikon D7200 camera with LAOWA 60 mm F2.8 2:1 Super Macro Lens. Maxillary palpi and pronota were captured by a Nikon D5500

camera with a Nikon SMZ18 stereomicroscope. Stains and dust on specimens were moderately cleared using Photoshop Elements 2022 Editor 20.0 after photographing.

Taxon treatments

Pareuryaptus Dubault, Lassalle & Roux, 2008

Type species

Trigonotoma curtula Chaudoir 1868

Diagnosis

Amongst the seven genera (*Trigonotoma* Dejean, *Lesticus* Dejean, *Euryaptus* Bates, *Nesites* Andrews, *Pareuryaptus* Dubault, Lassalle & Roux, *Leiolesticus* Roux, Lassalle & Dubault and *Trigonaptus* Fedorenko) of Trigonotomina, *Pareuryaptus* can be distinguished by the following character combinations: first antennomere (scape) longer than the length of the second and third antennomeres combined; antennal pedicel glabrous, without ventral seta; apex of labrum emarginate, with six apical setae, four grouped near the middle, the lateral setae evidently distant from the median four ones; parascutellar striae absent or very short; metacoxa unisetose; females with one seta on each side of sternite VII (Roux et al. 2016, Fedorenko 2020).

Pareuryaptus adoxus (Tschitschérine, 1900)

Nomenclature

Tschitschérine (1900): 162 (original: *Trigonotoma*; type locality: Saigon; holotype in ZMAS); Lorenz (2005): 300 (*Trigonotoma*, catalogue); Dubault et al. (2008a): 241; Dubault et al. (2008b): 199; Roux et al. (2016): 52.

Materials

- a. scientificName: *Pareuryaptus adoxus* (Tschitschérine, 1900); country: China; stateProvince: Yunnan; verbatimLocality: Xishuangbanna, Damenglong; verbatimElevation: 650 m; year: 1958; month: 7; day: 12; individualCount: 1; sex: female; recordedBy: Chunpei Hong; institutionCode: IZAS
- b. scientificName: *Pareuryaptus adoxus* (Tschitschérine, 1900); country: China; stateProvince: Yunnan; verbatimLocality: Jinghong, Nabanhe Natural Reserve, Mengsong Country, Danuoyou; verbatimElevation: 770 m; verbatimLatitude: 22.20699°N; verbatimLongitude: 100.63761°E; samplingProtocol: pitfall trap; year: 2009; month: 5; day: 26; individualCount: 1; sex: female; recordedBy: L. Z. Meng; institutionCode: IZAS

Diagnosis

Habitus: Fig. 1a. Maxillary palpus: Fig. 3a. Pronotum: Fig. 4a.

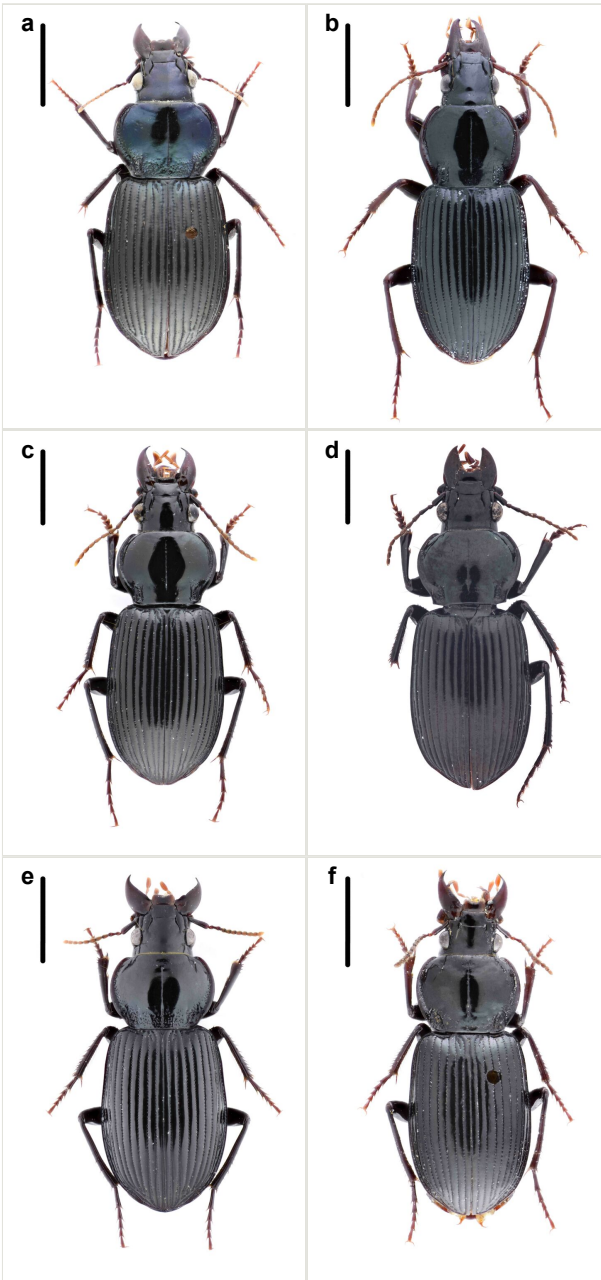


Figure 1.

Habitus of *Pareuryaptus* spp. from China (scale bars = 3 mm): **a**, *P. adoxus* (Tschitschérine), female from Danuoyou, Yunnan; **b**, *P. exiguus* Dubault, Lassalle & Roux, male from Naqin Village, Guangxi; **c**, *P. luangphabangensis* Kirschenhofer, male from Nanpaxiaozhai, Yunnan; **d**, *P. luangphabangensis* Kirschenhofer, male from Jino Mt., Yunnan (taken by Xiaoran Yang); **e**, *P. chalceolus chalceolus* (Bates), female from Hanjiang, Fujian; **f**, *P. chalceolus formosanus* (Jedlička), female from Jialeshui, Taiwan.

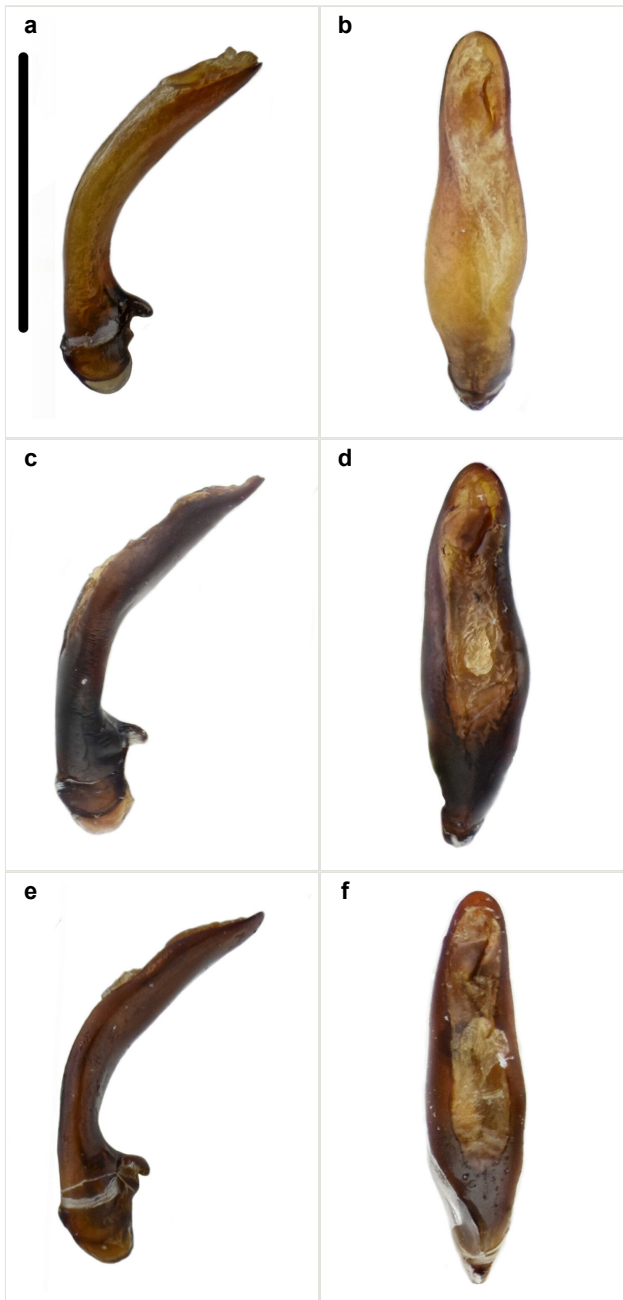


Figure 2.

Left lateral view and dorsal view of median lobe of aedeagus of *Pareuryaptus* spp. from China (scale bar = 2 mm): **a & b**, *P. exiguus* Dubault, Lassalle & Roux, Naqin Village, Guangxi; **c & d**, *P. luangphabangensis* Kirschenhofer, Nanpaxiaozhai, Yunnan; **e & f**, *P. chalceolus* *chalceolus* (Bates), Guanyin Mt., Guangdong.

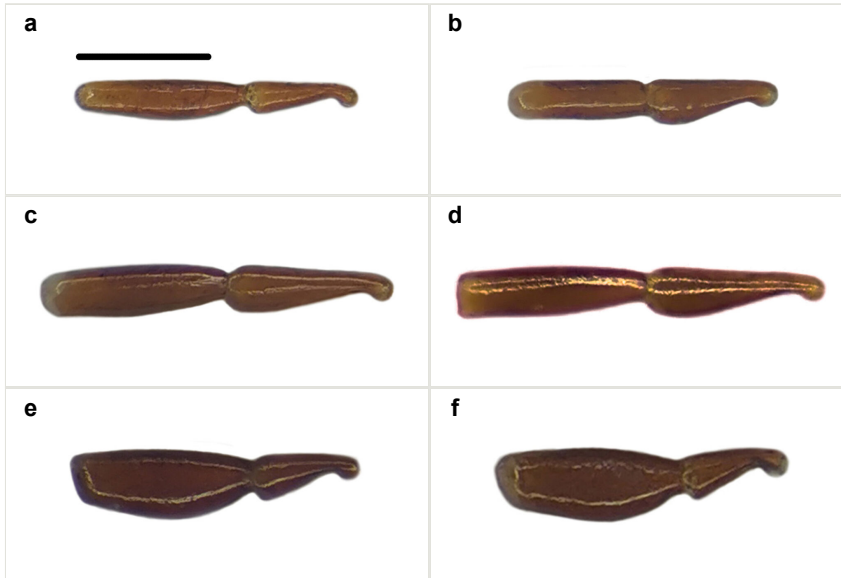


Figure 3.

Maxillary palpi of *Pareuryaptus* spp. from China (scale bar = 0.3 mm): **a**, *P. adoxus* (Tschitschérine), female from Damenglong, Yunnan; **b**, *P. exiguus* Dubault, Lassalle & Roux, male from Naqin Village, Guangxi; **c**, *P. luangphabangensis* Kirschenhofer, female from Nanpaxiaozhai, Yunnan; **d**, *P. luangphabangensis* Kirschenhofer, male from Jino Mt., Yunnan; **e**, *P. chalceolus chalceolus* (Bates), male from Guanyin Mt., Guangdong; **f**, *P. chalceolus formosanus* (Jedlička), female from Jialeshui, Taiwan.

Body length = 12.2–12.6 mm. Dorsal surface largely black. Terminal maxillary palpimere cylindrical, of similar width as distal end of penultimate one, distinctly longer than penultimate one. Pronotum faintly blue, transversal round (pronotum width / pronotum length = 1.40–1.42), widest a little behind anterior third; pronotum densely and coarsely punctate between basal foveae; lateral margins hardly sinuate in front of posterior angles; posterior angles rounded and obtuse.

This species can be well distinguished from other Chinese species by the terminal maxillary palpimere cylindrical, not wider, but much longer than the penultimate one.

Remarks

Xishuangbanna, the collection locality of the two specimens we examined, is quite far from South Vietnam, the type locality of *P. adoxus*. However, we are confident in determining them as *P. adoxus* because all characteristics are nearly identical to the description and images of this species (Roux et al. 2016).

Distribution

Vietnam, Laos and a new record for China (Yunnan): Fig. 5.

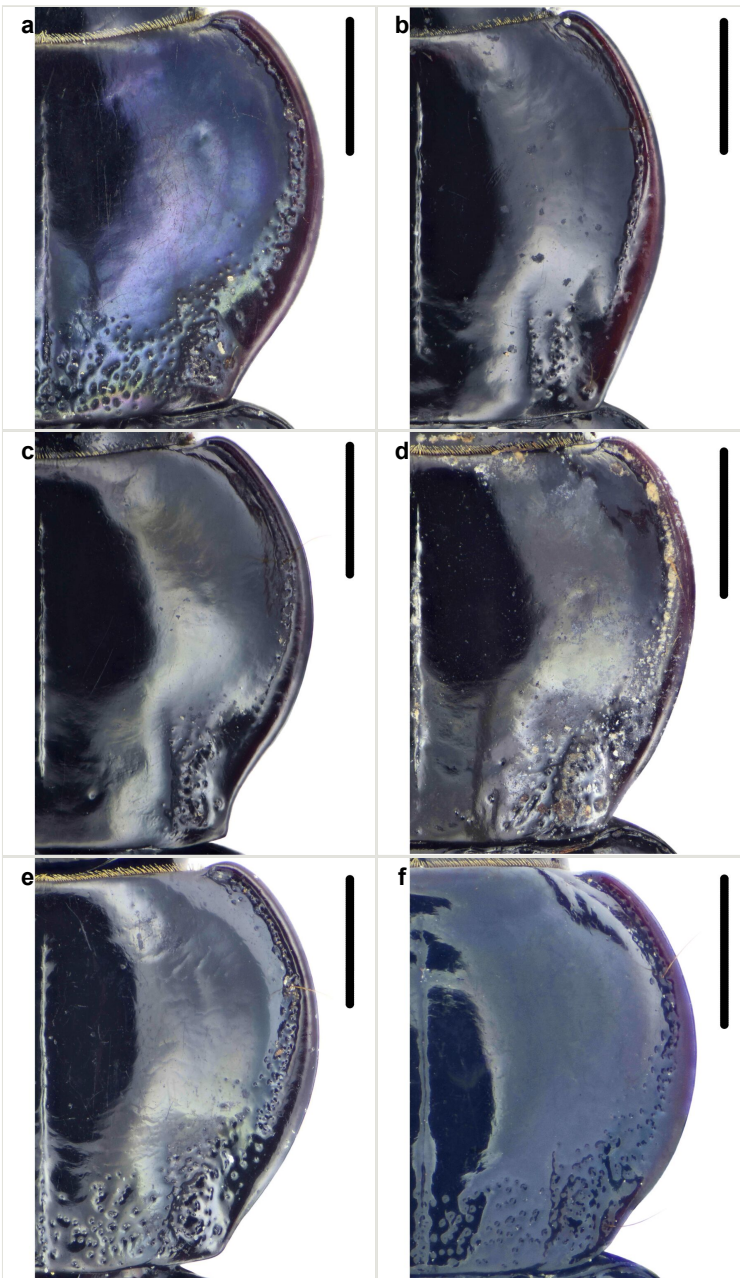


Figure 4.

Pronota of *Pareuryaptus* spp. from China (scale bars = 1 mm): **a**, *P. adoxus* (Tschitschérine), female from Danuoyou, Yunnan; **b**, *P. exiguus* Dubault, Lassalle & Roux, male from Naqin Village, Guangxi; **c**, *P. luangphabangensis* Kirschenhofer, male from Nanpaxiaozhai, Yunnan; **d**, *P. chalceolus formosanus* (Jedlička), female from Jialeshui, Taiwan; **e**, *P. chalceolus chalceolus* (Bates), male from Guanyin Mt., Guangdong; **f**, *P. chalceolus chalceolus* (Bates), female from Hanjiang, Fujian.

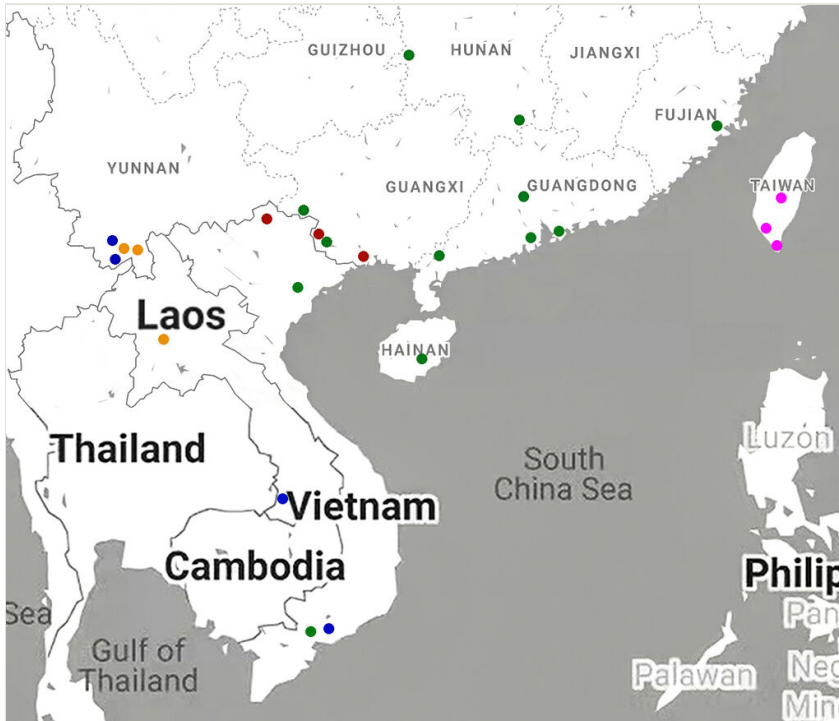


Figure 5. [doi](#)

Distribution map for *Pareuryaptus* spp. known from China: *P. adoxus* (Tschitschérine) (blue); *P. exiguus* Dubault, Lassalle & Roux (red); *P. luangphabangensis* Kirschenhofer (orange); *P. chalceolus chalceolus* (Bates) (green); *P. chalceolus formosanus* (Jedlička) (magenta).

Pareuryaptus exiguus Dubault, Lassalle & Roux, 2008

Nomenclature

Dubault et al. (2008b): 201 (type locality: Hagiang; holotype in MNHN); Roux et al. (2016): 60.

Materials

- a. scientificName: *Pareuryaptus exiguus* Dubault, Lassalle & Roux, 2008; country: China; stateProvince: Guangxi; verbatimLocality: Fangcheng District, Nasuo Town, Naqin Village, 248 platform; verbatimElevation: 852 m; verbatimLatitude: N21.7669; verbatimLongitude: E108.0598; samplingProtocol: soil sieve; year: 2020; month: 12; day: 10; individualCount: 1; sex: male; recordedBy: Feng Zegang; institutionCode: IZAS
- b. scientificName: *Pareuryaptus exiguus* Dubault, Lassalle & Roux, 2008; country: China; stateProvince: Guangxi; verbatimLocality: Daqing Mt.; verbatimElevation: 700 m; year: 1983; month: 5; day: 5; individualCount: 1; sex: female; recordedBy: Subai Liao; institutionCode: IZAS

Diagnosis

Habitus: Fig. 1b. Male genitalia: Fig. 2a, b. Maxillary palpus: Fig. 3b. Pronotum: Fig. 4b.

Body length = 12.6–13.7 mm. Dorsal surface dark brown to black. Terminal maxillary palpimere cylindrical, as long as penultimate one. Pronotum black, rounded, narrower than that of the previous species (pronotum width / pronotum length = 1.24–1.29), widest near middle; pronotum completely smooth between basal foveae; lateral margins hardly sinuate in front of posterior angles; posterior angles rounded and obtuse.

This species can be well distinguished from other Chinese species by the narrower pronotum and lateral margins evenly curved, widest near middle.

Supplementary descriptions.

Male genitalia: in lateral view, median lobe of aedeagus with ventral margin very weakly curved near middle, apical lamella nearly straight; in dorsal view, median lobe of aedeagus with both lateral margins sinuate, widest near basal third, gradually constricted near apical third, apex rounded with apical lamella very short, apical orifice opened left-dorsally.

Remarks

This species was originally described from a single female. We herein provide the first record of the male of this species and provide description and illustration for the male genitalia.

Distribution

Vietnam and a new record for China (Guangxi): Fig. 5.

Pareuryaptus luangphabangensis Kirschenhofer, 2011

Nomenclature

Kirschenhofer (2011): 33 (type locality: Luang Phabang; holotype in CADA); Roux et al. (2016): 78.

Materials

- a. scientificName: *Pareuryaptus luangphabangensis* Kirschenhofer, 2011; country: China; stateProvince: Yunnan; verbatimLocality: Jinghong Menglun xishuangbanna P G 2 – 19; verbatimDepth: 558 m; verbatimLatitude: N: 21°55.035'; verbatimLongitude: E: 101°16.500'; year: 2007; month: 5; day: 10; individualCount: 1; sex: male; recordedBy: Zheng Guo; institutionCode: IZAS
- b. scientificName: *Pareuryaptus luangphabangensis* Kirschenhofer, 2011; country: China; stateProvince: Yunnan; verbatimLocality: Xishuangbanna Dai Autonomous Prefecture,

Jinghong City, Jino Mt.; verbatimLatitude: 22.0373N; verbatimLongitude: 101.0044E; year: 2020; month: 5; day: 18-2; individualCount: 1; sex: male; recordedBy: Yi Li; collectionCode: CHLC

- c. scientificName: *Pareuryaptus luangphabangensis* Kirschenhofer, 2011; country: China; stateProvince: Yunnan; verbatimLocality: Xishuangbanna Dai Autonomous Prefecture, Jinghong City, Gasa Town, Nanpaxiaozhai; verbatimElevation: 1000 m; year: 2021; month: 3-5; individualCount: 2; sex: 1 male, 1 female; recordedBy: Hui Ce; collectionCode: CHLC

Diagnosis

Habitus: Fig. 1c, d. Male genitalia: Fig. 2c, d. Maxillary palpus: Fig. 3c, d. Pronotum: Fig. 4c.

Body length = 12.8–14.6 mm. Dorsal surface black. Terminal maxillary palpimere cylindrical, as long as penultimate one. Pronotum black, widely cordate (pronotum width / pronotum length = 1.37–1.44), widest a little behind anterior third; pronotum completely smooth between basal foveae; lateral margins strongly sinuate in front of posterior angles; posterior angles rectangular with sharp apices.

This species can be well distinguished from other Chinese species by its characteristic pronotum that is strongly cordate with evident sinuation in front of posterior angles, which are sharp.

Remarks

This species is somewhat similar to *P. aethiops* distributed in Myanmar. Based on the descriptions in literature (Roux et al. 2016), these two species are mainly different in the shape of pronotum: lateral margins evidently sinuate before posterior angles in *P. luangphabangensis*, but hardly sinuate in *P. aethiops*; apex of posterior angles sharp in *P. luangphabangensis*, but nearly rounded in *P. aethiops*.

Distribution

Laos and a new record for China (Yunnan): Fig. 5.

Pareuryaptus chalceolus chalceolus (Bates, 1873)

Nomenclature

Bates (1873): 328 (original: *Trigonotoma*; type locality: Hong Kong; lectotype in MNHN); Bates (1889): 16 (*Trigonotoma*, Saigon); Lorenz (2005): 300 (*Trigonotoma*, catalogue); Dubault et al. (2007): 216 (*Trigonotoma*); Dubault et al. (2008a): 241; Dubault et al. (2008b): 207; Roux et al. (2016): 84; Löbl and Löbl (2017): 688 (catalogue).

Synonym: *Trigonotoma annamensis* Jedlička (1962): 313 (type locality: Cuatung, holotype in NMPC); Dubault et al. (2008b): 208 (synonymised to *P. chalceolus*).

Materials

- a. scientificName: *Pareuryaptus chalceolus chalceolus* (Bates, 1873); country: Vietnam; verbatimLocality: TONKIN Hoa Binh; individualCount: 1; sex: male; recordedBy: A de cooman; institutionCode: IZAS
- b. scientificName: *Pareuryaptus chalceolus chalceolus* (Bates, 1873); country: China; stateProvince: Guangxi; verbatimLocality: Daqing Mt.; verbatimElevation: 700 m; year: 1983; month: 5; day: 5; individualCount: 1; sex: male; recordedBy: Subai Liao; institutionCode: IZAS
- c. scientificName: *Pareuryaptus chalceolus chalceolus* (Bates, 1873); country: China; stateProvince: Guangxi; verbatimLocality: Jingxi County, near Longbang Town Hotel; verbatimElevation: 700 m; verbatimLatitude: 22.879343N; verbatimLongitude: 106.330014E; samplingProtocol: collect at night; year: 2018; month: 4; day: 29; individualCount: 1; sex: male; recordedBy: Weifeng Yan; institutionCode: IZAS
- d. scientificName: *Pareuryaptus chalceolus chalceolus* (Bates, 1873); country: China; stateProvince: Guangdong; verbatimLocality: Guangzhou City, Xinhui District, Guanyin Mt.; year: 2021; month: 3; individualCount: 5; sex: 2 males, 3 females; recordedBy: native collector; collectionCode: CHLC
- e. scientificName: *Pareuryaptus chalceolus chalceolus* (Bates, 1873); country: China; stateProvince: Fujian; verbatimLocality: Putian City, Hanjiang District; year: 2020; month: 3; day: 10; individualCount: 1; sex: female; recordedBy: native collector; collectionCode: CJCC
- f. scientificName: *Pareuryaptus chalceolus chalceolus* (Bates, 1873); country: China; stateProvince: Hunan; verbatimLocality: Chenzhou City, Yizhang County, Yuxi Town; year: 2021; month: 5; day: 1; individualCount: 2; sex: females; recordedBy: Jinse Song; collectionCode: CYLC

Diagnosis

Habitus: Fig. 1e. Male genitalia: Fig. 2e, f. Maxillary palpus: Fig. 3e. Pronotum: Fig. 4e, f.

Body length = 11.9–14.5 mm. Dorsal surface black. Terminal maxillary palpimere elongated and ovate, much longer and wider than penultimate one. Pronotum black, widely rounded (pronotum width / pronotum length = 1.33–1.43), widest a little behind anterior third; pronotum densely punctate between basal foveae; lateral margins hardly sinuate in front of posterior angles; posterior angles obtuse.

This species can be well distinguished from other Chinese species by the terminal maxillary palpimere long-ovate, much longer and wider than the penultimate one.

Distribution

Vietnam and China (Hong Kong, Hainan, Guangxi, Guangdong, Fujian, Hunan): Fig. 5.

Pareuryaptus chalceolus formosanus (Jedlička, 1962)

Nomenclature

Jedlička (1962): 314 (original: *Trigonotoma formosanus*; type locality: Takao; holotype in NMPC); Lorenz (2005): 300 (*Trigonotoma formosanus*, catalogue); Dubault et al. (2008a): 241 (*Pareuryaptus formosanus*); Dubault et al. (2008b): 208 (as subspecies of *P. chalceolus*); Dubault et al. (2008c): 211 (*Pareuryaptus formosanus*); Roux et al. (2016): 84; Löbl and Löbl (2017): 688 (catalogue).

Material

- a. scientificName: *Pareuryaptus chalceolus formosanus* (Jedlička, 1962); country: China; stateProvince: Taiwan; verbatimLocality: Pingtung County, Jialeshui; year: 2008; month: 6; day: 8; individualCount: 1; sex: female; recordedBy: Changchin Chen; institutionCode: IZAS

Diagnosis

Habitus: Fig. 1f. Maxillary palpus: Fig. 3f. Pronotum: Fig. 4d.

Body length = 11.7 mm. Dorsal surface black. Similar to the nominal-typical subspecies, but different in the pronotum being only sparsely punctate between basal foveae.

Distribution

China (Taiwan): Fig. 5.

Identification keys

Key to Chinese species and subspecies of <i>Pareuryaptus</i>		
1	Pronotum more or less punctate between basal foveae; terminal maxillary palpimere much longer than penultimate one.	2
–	Pronotum completely smooth between basal foveae; terminal maxillary palpimere as long as penultimate one.	4
2	Terminal maxillary palpimere long-ovate, distinctly wider than distal end of penultimate one.	3
–	Terminal maxillary palpimere cylindrical, not wider than distal end of penultimate one.	<i>P. adoxus</i> (Tschitschérine, 1900)

3	Pronotum densely punctate between basal foveae, distributed in Mainland China.	<i>P. chalceolus chalceolus</i> (Bates, 1873)
–	Pronotum sparsely punctate between basal foveae, distributed in Taiwan, China.	<i>P. chalceolus formosanus</i> (Jedlička, 1962)
4	Pronotum lateral margins nearly straight before posterior angles, apex of posterior angles obtuse.	<i>P. exiguus</i> Dubault, Lassalle & Roux, 2008
–	Pronotum lateral margins strongly sinuate before posterior angles, apex of posterior angles sharp.	<i>P. luangphabangensis</i> Kirschenhofer, 2011

Acknowledgements

We wish to sincerely appreciate the following colleagues. Mr. Philippe Roux (Paris, France), Mr. Pingzhou Zhu (IZAS), Mr. Sixun Ge (BJFU) and Mr. Wenqi Yin (BJFU) gave us many crucial guides on our work. Mr. Xiaoran Yang (NEFU), together with Mr. Zhaoqi Leng (NKU), shared their photographic experiences and helped us improve our photography skills. Mr. Jiaheng Chen (NJAU) provided us with the specimen of *Pareuryaptus chalceolus* from Fujian. Dr. Riccardo Sciaky (Milano, Italy) gave us a lot of valuable advice on this paper. This work was supported by Guangxi Fangcheng Golden Camellia NNR Comprehensive Science Investigation (2021) and National Natural Science Foundation of China (31970400).

References

- Bates HW (1873) On the geodephagous Coleoptera of Japan. Fam. Carabidae. The Transactions of the Entomological Society of London 1873 (2): 229-322.
- Bates HW (1889) Contributions à la faune indo-chinoise. 3e Mémoire. Annales de la Société Entomologique de France 6) 9: 261-286.
- Chaudoir M (1868) Révision des Trigonotomides. Annales de la Société Entomologique de Belgique 11 (1867): 151-165.
- Dubault G, Lassalle B, Roux P (2007) Types of «Trigonotomi» of the collections of the Muséum National d'Histoire Naturelle, in Paris (Coleoptera, Pterostichidae. Bulletin de la Société Entomologique de France 112 (2): 209-222. <https://doi.org/10.3406/bsef.2007.16423>
- Dubault G, Lassalle B, Roux P (2008a) Les genres des “Trigonotomi”: *Pareuryaptus* n. gen. et révision des *Euryaptus* Bates, 1892 (Coleoptera, Pterostichidae). Bulletin de la Société Entomologique de France 113: 239-248. <https://doi.org/10.3406/bsef.2008.16526>
- Dubault G, Lassalle B, Roux P (2008b) Révision du genre *Pareuryaptus* Dubault, Lassalle & Roux, 2008 et description de cinq espèces nouvelles (Coleoptera, Pterostichidae, Trigonotomi). L'Entomologiste 64 (3): 197-211.

- Dubault G, Lassalle B, Roux P (2008c) Types de Trigonotomi conservés dans les Musées d'Histoire Naturelle de Bâle, de Berlin, de Paris (complément) et de Prague. *Lambillionia* 108 (4): 199-215.
- Fedorenko DN (2020) New taxa of Pterostichini (Coleoptera: Carabidae) from Vietnam. *Russian Entomological Journal* 29 (1): 38-52. <https://doi.org/10.15298/rusentj.29.1.06>
- Jedlička A (1962) Monographie des Tribus Pterostichini aus Ostasien (Pterostichi, Trigonotomi, Myadi) (Coleoptera-Carabidae). *Abhandlungen und Berichte aus dem Staatlichen Museum für Tierkunde in Dresden* 26: 177-346.
- Kirschenhofer E (2011) Zwei neue Arten der Gattung *Pareuryaptus* Dubault, Lassalle & Roux aus Laos sowie eineneue Art der Gattung *Trigonognatha* Motschulsky aus China. *Mitteilungen des Internationalen Entomologischen Vereins* 36 (1-2): 33-41.
- Löbl I, Löbl D (2017) *Catalogue of Palaearctic Coleoptera. Vol. 1. Archostemata - Myxophaga - Adephaga*. E J Brill, Denmark, 1477 pp. https://doi.org/10.1163/9789004330290_003
- Lorenz W (2005) *Systematic list of extant ground beetles of the world (Insecta Coleoptera Geadephaga: Trachypachidae and Carabidae incl. Paussinae, Cicindelinae, Rhysodinae)*. 2nd Edition. Wolfgang Lorenz, Tutzing, 530 pp.
- Roux P, Lassalle B, Dubault G (2016) *Les Trigonotomi. Révision*. B. Lassalle et P. Roux, France, 569 pp.
- Tschitschérine T (1900) Notes sur les Platysmatini du Muséum d'Histoire Naturelle de Paris. II. *Horae Societatis Entomologicae Rossicae* 34: 153-198.