



Fauna Europaea: Mollusca - Bivalvia

Rafael Araujo[‡], Yde de Jong^{§,|}

[‡] Museo Nacional de Ciencias Naturales, Madrid, Spain

[§] University of Amsterdam - Faculty of Science, Amsterdam, Netherlands

[|] Museum für Naturkunde, Berlin, Germany

Corresponding author: Rafael Araujo (rafael@mncn.csic.es), Yde de Jong (mail@yjong.net)

Academic editor: Lyubomir Penev

Received: 28 Apr 2015 | Accepted: 13 Jul 2015 | Published: 17 Jul 2015

Citation: Araujo R, de Jong Y (2015) Fauna Europaea: Mollusca – Bivalvia. Biodiversity Data Journal 3: e5211.
doi: [10.3897/BDJ.3.e5211](https://doi.org/10.3897/BDJ.3.e5211)

Abstract

[Fauna Europaea](#) provides a public web-service with an index of scientific names (including important synonyms) of all living European land and freshwater animals, their geographical distribution at country level (up to the Urals, excluding the Caucasus region), and some additional information. The *Fauna Europaea* project covers about 230,000 taxonomic names, including 130,000 accepted species and 14,000 accepted subspecies, which is much more than the originally projected number of 100,000 species. This represents a huge effort by more than 400 contributing specialists throughout Europe and is a unique (standard) reference suitable for many users in science, government, industry, nature conservation and education. For the Mollusca-Bivalvia, data from 5 families (Margaritiferidae, Unionidae, Sphaeriidae, Cyrenidae, Dreissenidae) containing 55 species are included in this paper.

European freshwater bivalves belong to the Orders Unionoida and Cardiida. All the European unionoids are included in the superfamily Unionoidea, the freshwater mussels or naiads. The European cardiids belong to the following three superfamilies: Cardioidea, Cyrenoidea and Dreissenoida. Among the Unionoidea there are the most imperilled animal groups on the planet while the Cardioidea includes the cosmopolitan genus *Pisidium*, the Cyrenoidea the Asiatic clam (*Corbicula fluminea*) and the Dreissenoida the famous invasive zebra mussel (*Dreissena polymorpha*). Basic information is summarized

on their taxonomy and biology. Tabulations include a complete list of the current estimated families, genera and species.

Keywords

Biodiversity Informatics, Fauna Europaea, Taxonomic indexing, Zoology, Biodiversity, Taxonomy, Mollusca, Bivalvia, Margaritiferidae, Unionidae, Sphaeriidae, Cyrenidae, Dreissenidae, freshwater mussels, zebra mussel

Introduction

The European Commission published the [European Community Biodiversity Strategy](#), providing a framework for development of Community policies and instruments in order to comply with the [Convention on Biological Diversity](#). This Strategy recognises the current incomplete state of knowledge at all levels concerning biodiversity, which is a constraint on the successful implementation of the Convention. Fauna Europaea contributes to this Strategy by supporting one of the main themes: to identify and catalogue the components of European biodiversity into a database in order to serve as a basic tool for science and conservation policies.

With regard to biodiversity in Europe, both science and policies depend on a knowledge of its components. The assessment of biodiversity, monitoring changes, sustainable exploitation of biodiversity, and much legislative work depend upon a validated overview of taxonomic biodiversity. Towards this end Fauna Europaea plays a major role, providing a web-based information infrastructure with an index of scientific names (including important synonyms) of all living European land and freshwater animals, their geographical distribution at country level and some additional useful information. In this sense, the Fauna Europaea database provides a unique reference for many user-groups such as scientists, governments, industries, conservation communities and educational programs.

Fauna Europaea started in 2000 as an EC-FP5 four-years project, delivering its first release in 2004 (Jong et al. 2014). After thirteen years of steady progress, in order to efficiently disseminate the Fauna Europaea results and to increase the acknowledgement of the Fauna Europaea contributors, novel e-Publishing tools have been applied to prepare data-papers of all major taxonomic groups. For this purpose a special [Biodiversity Data Journal Series](#) has been compiled, called [Contributions on Fauna Europaea](#). This work was initiated during the [ViBRANT](#) project and is further supported by the recently started [EU BON](#) project. This paper holds the first publication of the Fauna Europaea Mollusca-Bivalvia data sector as a BDJ data paper.

Within the [EU BON](#) project also further steps will be made to implement *Fauna Europaea* as a basic tool and standard reference for biodiversity research and to evaluate taxonomic expertise capacity in Europe. The *Fauna Europaea* data-papers will contribute to a quality

assessment on biodiversity data by providing estimates on gaps in taxonomic information and knowledge.

General description

Purpose: The Fauna Europaea is a database of the scientific names and distribution of all living, currently known multicellular European land and fresh-water animal species assembled by a large network of experts, using advanced electronic tools for data collations and validation routines. An extended description of the Fauna Europaea project can be found in Jong et al. 2014. A summary is given in the sections below.

The Mollusca-Bivalvia are one of the 58 Fauna Europaea major taxonomic groups, covering 55 species (Fig. 1).

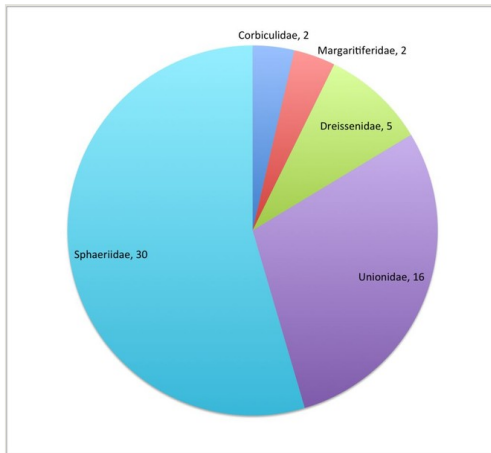


Figure 1.

aEu Mollusca-Bivalvia species per family. See Table 1 for family statistics.

Additional information: (Introduction Mollusca-Bivalvia

Bivalves (8,000 species) are the second richest mollusc class after the Gastropoda (60,000 species). Freshwater bivalves live in rivers and lakes around the world except Antarctica. They represent three subclasses, 19 families, 206 genera and about one thousand species (Bogan 2008). European freshwater bivalves belong to the orders Unionoida and Cardiida (Carter et al. 2011). All the European unionoids are included in the superfamily Unionoidea, the freshwater mussels or naiads. The European cardiids belong to the following three superfamilies: Cardioidea, Cyrenoidea and Dreissenoida. Among the Unionoidea (families Margaritiferidae and Unionidae) there are the most imperilled animal groups on the planet while the Cardioidea includes the cosmopolitan genus *Pisidium* (family Sphaeriidae); the Cyrenoidea includes the Asiatic clam (*Corbicula fluminea*) (family Cyrenidae) and the Dreissenoida includes the famous invasive zebra mussel (*Dreissena*

polymorpha) (family Dreissenidae). Most freshwater bivalves are filter or/and suspension feeders, living buried in the substratum where they can move thanks to their muscular foot and can clear large quantities of water. Sphaeriids can creep among weeds and rocks and unionoids can move few meters in one day. The zebra mussels live adhered to the substratum by a byssus.

Family Sphaeriidae

Bogan 2008 recognizes 34 species of this family in the Palearctic. Species identification in European Sphaeriidae (Fig. 2) can be as difficult as in Unionoida, and the miniaturization of the species of the Family Sphaeriidae can complicate the taxonomic task. In this group, the shell shape, position of the umbos, sculpture, tumidity, porosity, texture, lustre and thickness should be useful characters, although the hinge gives normally the principal key for a correct identification. The most important diagnostic hinge characters are: shape of cardinal teeth, shape and length of lateral teeth, length of the hinge plate (relative to overall shell length), shape of the ligament pit and the presence or absence of callus (Ellis 1978, Killeen et al. 2004). Molecular taxonomy has not yet reached the European sphaeriids as has happened with other faunas (Lee and Foighil 2003).

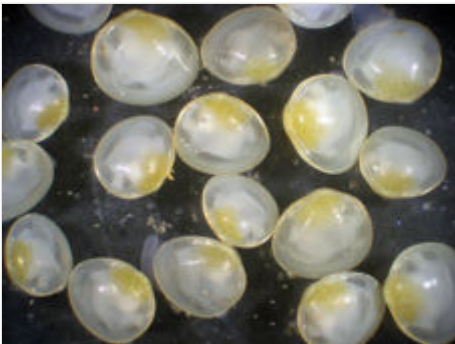


Figure 2.
Living specimens of *Pisidium nitidum*.

Pea clams (Sphaeriidae) are ubiquitous in freshwater ecosystems; they have a minimal size of 2 mm and a life span of one year. They are always hermaphrodite and incubate the fertilized eggs into their gills until the juvenile stage (Araujo and Ramos 1997, Araujo and Ramos 1999).

Family Cyrenidae

Often also named by its synonym [Corbiculidae](#). In Europe only lives the genus *Corbicula* (). The number of species considered under this genus is not yet known, we recognize two hyper variable species, *Corbicula fluminea* (Müller, 1774) (Fig. 3) and *Corbicula fluminalis* (Müller, 1774), although their taxonomical status is not clear. In the 20th and 21st centuries *Corbicula* clams were introduced in North America, South America, Europe and North Africa. Their populations are also hermaphrodite with two different reproductive strategies:

incubate the fertilized eggs into their gills until the juvenile stage or can present planktonic larvae (Korniusshin and Glaubrecht 2002).



Figure 3.

Corbicula fluminea covering the river bottom.

Family Dreissenidae

In Europe live two genera and two species, *Dreissena polymorpha* (Fig. 4) and *Mytilopsis leucophaeta*, both famous invasive bivalves. Although they are considered freshwater molluscs, they can survive in brackish water, for example *Dreissena* in the Black and Caspian seas or *Mytilopsis leucophaeta* in North America, where autochthonous populations live in ecological equilibrium (Heiler et al. 2010, Kennedy 2011). Since the XIX century, the zebra mussel has spread to the European continent helped by river transport, as the first mass invasion of a Ponto-Caspian species in Europe (Bij de Vaate et al. 2002). In 1980s, mussels transported on cargo ships caused the spread of *D. polymorpha* to the North American continent. Species on this family can be identified by its mytiliform form, sometimes quadrate, with the hinge edentulous and the umbos anterior or terminal. The umbo cavity is bridged by a septum or myophore. They have a byssus which allows them to form dense colonies. They have separated sexes and planktonic larvae.



Figure 4.

Colony of zebra mussel, *Dreissena polymorpha*.

Recently Bilandžija (Bilandžija et al. 2013) have described two new species of the genus *Congerina*. In this way, the family Dreissenidae in Europe also includes the genus *Congerina* with three species, *C. kusceri*, *C. jalcizi* and *C. mulaomerovici*, all living in caves of the Dinaric karst.

Families [Unionidae](#) and [Margaritiferidae](#)

The assemblage fauna of European Unionoida includes only two families, Margaritiferidae (Fig. 5) and Unionidae (Fig. 6), is not very diverse in comparison with other areas of the world, for instance the Nearctic, with 300 species and where a single river may have more species than all those in Europe. In the Palearctic there are recognized between 60 and 100 species of Unionoida (Graf 2010, Graf and Cummings 2013, Bogan 2008). Up to the beginning of the twentieth century, the number of described taxa in Europe was about 1,500 species due to an overestimation of species richness based on shell characters (Graf 2010). Since then, taxonomy and systematics of European freshwater mussels were reconstructed starting with the seminal paper from Haas (Haas 1969) who considered 58 taxa in the West Palearctic. Currently, this figure is changing reflecting the use of molecular taxonomic tools which are unrevealing previously hidden lineages (Araujo et al. 2009, Reis and Araujo 2009, Prié and Puillandre 2013). Here we consider 16 native species, belonging to two families and six genera, but the work is not yet finished, with many of the Haas (Haas 1969) subspecies needed to be clarified.



Figure 5.

The endangered species *Margaritifera margaritifera*.

Freshwater mussels, also known as naiads, can grow to lengths of 25 cm and live more than a century. They are one of the most imperilled animal groups on the planet, yet they play an extremely important role in the ecology of freshwater ecosystems as a main component of the freshwater biomass (Vaughn and Hakenkamp 2001, Strayer et al. 2004). The dramatic changes taking place in freshwater ecosystems during the last century have played a part in the large-scale disappearance of these and other animals (Lydeard et al. 2004). Some species fulfil criteria of indicator, flagship and umbrella species, making them

ideal targets in aquatic conservation, as it is the case of the freshwater pearl mussel in Europe *Margaritifera margaritifera* (Geist 2010).



Figure 6.

Unio tumidiformis lives only in some rivers of the South of Spain.

In addition, one of the most amazing traits about freshwater mussels is their specialized reproductive strategy: the eggs are fertilized in the mussel gills (marsupium), where also occurs the segmentation until the glochidium, which has a temporary but obligatory parasitic stage in which the larvae (glochidia) attach to the external surface of a suitable host prior to metamorphosis to the free-living juvenile stage. The males release to the water the sperm, which will be siphoned for the females for fertilization (Kat 1984, Bauer 1987).

The form of the Unionoida shell can vary according to the biotype, the environmental influences giving rise to changes through which the identification of a shell can be made more difficult.

Project description

Title: This Biodiversity Data Journal (BDJ) data paper includes the taxonomic indexing efforts in the Fauna Europaea on European Mollusca-Bivalvia covering the first two versions of Fauna Europaea worked on between 2000 and 2013 (up to version 2.6).

Personel: The taxonomic framework of Fauna Europaea includes [partner institutes](#), providing taxonomic expertise and information, and expert networks taking care about data collation.

Every taxonomic group is covered by at least one Group Coordinator responsible for the supervision and integrated input of taxonomic and distributional data of a particular group. The Fauna Europaea checklist would not have reached its current level of completion without the input from several groups of specialists. The formal responsibility of collating and delivering the data of relevant families rested with a number of Taxonomic Specialists (see Table 1). For Mollusca-Bivalvia the responsible Group Coordinator and Taxonomic specialist is Rafael Araujo. A more detail overview of the Fauna Europaea classification

and expertise network for Mollusca-Bivalvia can be found here: <http://www.faunaeur.org/experts.php?id=319>.

Table 1.
Responsible specialists per family in Mollusca – Bivalvia.

| TAXONOMY | | EUROPE | | |
|------------------|---------------|------------------------------------|---|---|
| FAMILY | SPECIALIST(S) | DATABASED SPECIES (Fauna Europaea) | TOTAL DESCRIBED SPECIES (information-gap) | TOTAL ESTIMATED SPECIES (knowledge-gap) |
| Corbiculidae | Rafael Araujo | 2 | 2 | 2 |
| Dreissenidae | Rafael Araujo | 5 | 7 | 7–10 |
| Margaritiferidae | Rafael Araujo | 2 | 2 | 2 |
| Sphaeriidae | Rafael Araujo | 30 | 34 | 35–40 |
| Unionidae | Rafael Araujo | 16 | 19 | 19–25 |

Data management tasks are carried out by the *Fauna Europaea* project bureau. During the project phase (until 2004) a network of principal partners took responsibility for various management tasks: [Zoological Museum Amsterdam](#) (general management & system development), [Zoological Museum of Copenhagen](#) (data collation), [National Museum of Natural History in Paris](#) (data validation) and Museum and [Institute of Zoology in Warsaw](#) (NAS extension). Once the formal end of the project ended (2004-2013) all tasks were taken over by the Zoological Museum Amsterdam.

Study area description: The area study covers the European mainland (Western Palearctic), including the Macaronesian islands, excluding the Caucasus, Turkey, Arabian Peninsula and Northern Africa (see: Geographic coverage).

Design description: Standards. Group coordinators and taxonomic specialists have to deliver the (sub)species names according to strict standards. The names provided by Fauna Europaea are scientific names. The taxonomic scope includes issues like, (1) the definition of criteria used to identify the accepted species-group taxa, (2) the hierarchy (classification scheme) for the accommodation of the all accepted species and (3), relevant synonyms, and (4) the correct nomenclature. The Fauna Europaea '[Guidelines for Group Coordinators and Taxonomic Specialists](#)', include the standards, protocols, scope, and limits that provide the instructions for all more than 400 specialists contributing to the project, strictly following the provisions of the current edition of the International Code of Zoological Nomenclature.

Data management. The data records could either be entered offline into a preformatted MS-Excel worksheet or directly into the Fauna Europaea transaction database using an online browser interface. Since 2013 the data servers are hosted at the [Museum für Naturkunde](#) in Berlin (migrated from ZMA-UvA).

Data set. The Fauna Europaea basic data set consists of: accepted (sub)species names (including authorship), synonym names (including authorship), a taxonomic hierarchy/classification, misapplied names (including misspellings and alternative taxonomic views), homonym annotations, expert details, European distribution (at country level), Global distribution (only for European species), taxonomic reference (optional), occurrence reference (optional).

Funding: *Fauna Europaea* was funded by the European Commission under the Fifth Framework Programme and contributed to the Support for Research Infrastructures work programme with Thematic Priority Biodiversity (EVR1-1999-20001) for a period of four years (1 March 2000 - 1 March 2004), including a short 'NAS extension', allowing EU candidate accession countries to participate. Follow-up support was given by the EC-FP5 [EuroCAT](#) project (EVR1-CT-2002-20011), by the EC-FP6 [ENBI](#) project (EVK2-CT-2002-20020), by the EC-FP6 [EDIT](#) project (GCE 018340), by the EC-FP7 [PESI](#) project (RI-223806) and by the EC-FP7 [ViBRANT](#) project (RI-261532). Continuing management and hosting of the Fauna Europaea services was supported by the [University of Amsterdam](#) (Zoological Museum Amsterdam) and [SARA/Vancis](#). Recently the hosting of Fauna Europaea was taken over by the [Museum für Naturkunde](#) in Berlin, supported by the EC-FP7 [EU BON](#) project (grant agreement №308454).

For preparing the Mollusca-Bivalvia data set additional support was received from the Fauna Ibérica Project (Museo Nacional de Ciencias Naturales-C.S.I.C).

Sampling methods

Study extent: See spatial coverage and geographic coverage descriptions.

Sampling description: Fauna Europaea data have been assembled by principal taxonomic experts, based on their individual expertise, including literature sources, collection research, and field observations. In total no less than 476 experts contributed taxonomic and/or faunistic information for Fauna Europaea. The vast majority of the experts are from Europe (including EU non-member states). As a unique feature, Fauna Europaea funds were set aside for rewarding/compensating for the work of taxonomic specialists and group coordinators.

To facilitate data transfer and data import, sophisticated on-line (web interfaces) and off-line (spreadsheets) data-entry routines were built, integrated within an underlying central Fauna Europaea transaction database (see Fig. 7). This includes advanced batch data import routines and utilities to display and monitor the data processing within the system. In retrospect, it seems that the off-line submission of data was probably the best for bulk import during the project phase, while the on-line tool was preferred to enter modifications in later versions. This system works well but will be replaced in 2013.

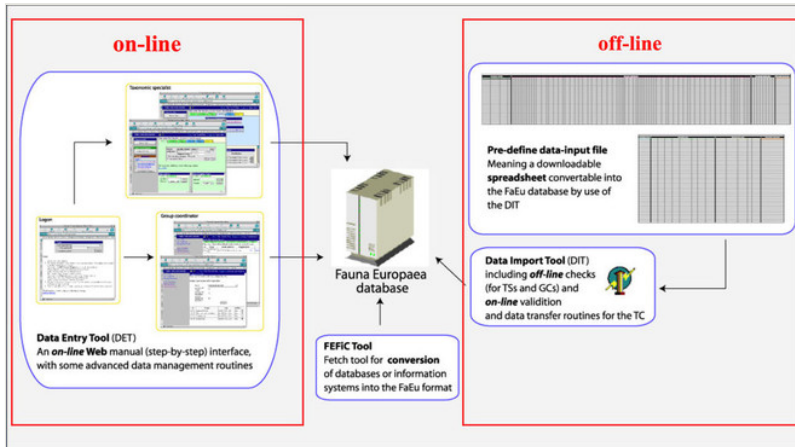


Figure 7.

Fauna Europaea on-line (browser interfaces) and off-line (spreadsheets) data entry tools.

A first release of the Fauna Europaea index via the web-portal has been presented at 27th of September 2004, the most recent release (version 2.6.2) was launched at 29 August 2013. An overview of Fauna Europaea releases can be found here: http://www.faunaeur.org/about_fauna_versions.php.

Quality control: Fauna Europaea data are unique in a sense that they are fully expert based. Selecting leading experts for all groups assured the systematic reliability and consistency of the Fauna Europaea data.

Furthermore, all Fauna Europaea data sets are intensively reviewed at regional and thematic validation meetings, at review sessions on taxonomic symposia (for some groups), by Fauna Europaea Focal Points (during the FaEu-NAS and PESI projects) and by various end-users sending annotations using the web form at the web-portal. Additional validation on gaps and correct spelling was effected at the validation office in Paris.

Checks on technical and logical correctness of the data have been implemented in the data entry tools, including around 50 "[Taxonomic Integrity Rules](#)". This validation tool proved to be of huge value for both the experts and project management, and contributed significantly to preparation of a remarkably clean and consistent data set. This thorough reviewing makes Fauna Europaea the most scrutinised data sets in its domain.

Estimated gaps for Mollusca-Bivalvia, in terms of described species that are known from Europe, but currently not included in the database are presented in Table 1. They range from zero for most families up to about 5%. The information represented in this group will be updated on short term, mainly regarding the already accepted Unionidae species *Unio ravoisieri* Deshayes, 1847 living only in North East Spain and included at the National Catalogue as Endangered. Indeed, other new Unionidae taxa will be added once the new collected material from Italy, Croatia, Albania and Greece is studied. Most probably some

of the subspecies here cited in these areas will be considered species in a near future (Araujo *et al.* in prep.). This expected endemism at the European East peninsulas should be similar to the one recently found in the Iberian Peninsula, where the geographically restricted species *Unio delphinus* Spengler, 1793 and *U. tumidiformis* Castro, 1885 have been recently redescribed (Araujo *et al.* 2009, Reis and Araujo 2009).

To optimise the use and implementation of a uniform and correct nomenclature, also following the global efforts on establishing a so-called 'Global Names Architecture' (Pyle and Michel 2008, Patterson *et al.* 2010), a cross-referencing of the Fauna Europaea Mollusca – Bivalvia data-set with relevant nomenclators, including the Mollusks content of [AnimalBase](#), is recommended as well as a connection with relevant name services and checklists, like [CLECOM](#) (see also Additional information).

Step description: By evaluating team structure and life cycle procedures (data-entry, validation, updating, etc.), clear definitions of roles of users and user-groups, according to the taxonomic framework were established, including ownership and read and writes privileges, and their changes during the project life-cycle. In addition, guidelines on common data exchange formats and codes have been issued (see also the '[Guidelines for Experts](#)' document).

Geographic coverage

Description: Species and subspecies distributions in Fauna Europaea are registered at least a country level, i.e. for political countries. For this purpose the FaEu geographical system basically follows the TDWG standards. The covered area includes the European mainland (Western Palearctic), plus the Macaronesian islands (excl. Cape Verde Islands), Cyprus, Franz Josef Land and Novaya Zemlya. Western Kazakhstan and the Caucasus are excluded (see Fig. 8).

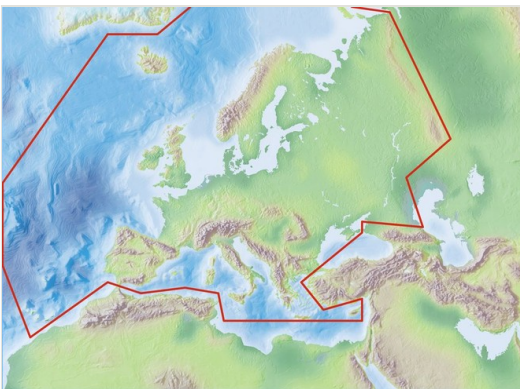


Figure 8.
Fauna Europaea geographic coverage ('minimal Europe').

The focus is on species (or subspecies) of European multicellular animals of terrestrial and freshwater environments. Species in brackish waters, occupying the marine/freshwater or marine/terrestrial transition zones, are generally excluded. Nevertheless, we have considered some bivalves which can survive in brackish waters, as *Mytilopsis* and *Dreissena*.

Coordinates: Mediterranean (N 35°) and Arctic Islands (N 82°) Latitude; Atlantic Ocean (Mid-Atlantic Ridge) (W 30°) and Ural (E 60°) Longitude.

Taxonomic coverage

Description: The Fauna Europaea database contains the scientific names of all living European land and freshwater animal species, including numerous infra-groups and synonyms. More details about the conceptual background of Fauna Europaea and standards followed are described above and in the project description paper(s).

This data paper covers the Mollusca-Bivalvia content of Fauna Europaea, including 5 families, 55 species, 34 subspecies and 96 (sub)species synonyms (see Fig. 1).

Although the classification used in FaunaEuropaea include the order Veneroidea with the superfamilies Cardioidea, Corbiculoidea, Sphaerioidea and Dreissenoidea, now it has changed to the order Cardiida with 3 superfamilies: Cardioidea, Cyrenoidea and Dreissenoidea. Indeed, family Corbiculidae is now Cyrenidae (Carter et al. 2011).

Taxa included:

| Rank | Scientific Name |
|-------------|-------------------|
| kingdom | Animalia |
| subkingdom | Eumetazoa |
| phylum | Mollusca |
| class | Bivalvia |
| subclass | Eulamellibranchia |
| superorder | Heterodonta |
| order | Veneroidea |
| superfamily | Cardioidea |
| superfamily | Corbiculoidea |
| family | Corbiculidae |
| superfamily | Dreissenoidea |
| family | Dreissenidae |

| | |
|-------------|-------------------|
| superfamily | Sphaerioidea |
| family | Sphaeriidae |
| superorder | Palaeoheterodonta |
| order | Unionoidea |
| superfamily | Unionoidea |
| family | Margaritiferidae |
| family | Unionidae |
| subfamily | Unioninae |

Temporal coverage

Living time period: Currently living.

Notes: Currently living animals in stable populations, largely excluding (1) rare/irregular immigrants, intruder or invader species, (2) accidental or deliberate releases of exotic (pet) species, (3) domesticated animals, (4) foreign species imported and released for bio-control or (5) foreign species largely confined to hothouses.

Usage rights

Use license: Open Data Commons Attribution License

IP rights notes: *Fauna Europaea* data are licensed under [CC BY SA version 4.0](https://creativecommons.org/licenses/by-sa/4.0/). The property rights of experts over their data is covered by their *Fauna Europaea* contract agreements. For more IPR details see: <http://www.faunaeur.org/copyright.php>.

Data resources

Data package title: Fauna Europaea - Mollusca-Bivalvia

Resource link: http://www.faunaeur.org/Data_papers/FaEu_Mollusca-Bivalvia_2.6.2.zip

Alternative identifiers: http://www.faunaeur.org/full_results.php?id=11480

Number of data sets: 2

Data set name: Fauna Europaea - Mollusca-Bivalvia version 2.6.2 - species

Character set: UTF-8

Download URL: http://www.faunaeur.org/Data_papers/FaEu_Mollusca-Bivalvia_2.6.2.zip

Data format: CSV

| Column label | Column description |
|----------------------|---|
| datasetName | The name identifying the data set from which the record was derived (http://rs.tdwg.org/dwc/terms/datasetName). |
| version | Release version of data set. |
| versionIssued | Issue data of data set version. |
| rights | Information about rights held in and over the resource (http://purl.org/dc/terms/rights). |
| rightsHolder | A person or organization owning or managing rights over the resource (http://purl.org/dc/terms/rightsHolder). |
| accessRights | Information about who can access the resource or an indication of its security status (http://purl.org/dc/terms/accessRights). |
| taxonID | An identifier for the set of taxon information (http://rs.tdwg.org/dwc/terms/taxonID). |
| parentNameUsageID | An identifier for the name usage of the direct parent taxon (in a classification) of the most specific element of the scientificName (http://rs.tdwg.org/dwc/terms/parentNameUsageID). |
| scientificName | The full scientific name, with authorship and date information if known (http://rs.tdwg.org/dwc/terms/scientificName). |
| acceptedNameUsage | The full name, with authorship and date information if known, of the currently valid (zoological) taxon (http://rs.tdwg.org/dwc/terms/acceptedNameUsage). |
| originalNameUsage | The original combination (genus and species group names), as firstly established under the rules of the associated nomenclaturalCode (http://rs.tdwg.org/dwc/terms/originalNameUsage). |
| family | The full scientific name of the family in which the taxon is classified (http://rs.tdwg.org/dwc/terms/family). |
| familyNameId | An identifier for the family name. |
| genus | The full scientific name of the genus in which the taxon is classified (http://rs.tdwg.org/dwc/terms/genus). |
| subgenus | The full scientific name of the subgenus in which the taxon is classified. Values include the genus to avoid homonym confusion (http://rs.tdwg.org/dwc/terms/subgenus). |
| specificEpithet | The name of the first or species epithet of the scientificName (http://rs.tdwg.org/dwc/terms/specificEpithet). |
| infraspecificEpithet | The name of the lowest or terminal infraspecific epithet of the scientificName, excluding any rank designation (http://rs.tdwg.org/dwc/terms/infraspecificEpithet). |

| | |
|--------------------------|---|
| taxonRank | The taxonomic rank of the most specific name in the scientificName (http://rs.tdwg.org/dwc/terms/infraspecificEpithet). |
| scientificNameAuthorship | The authorship information for the scientificName formatted according to the conventions of the applicable nomenclaturalCode (http://rs.tdwg.org/dwc/terms/scientificNameAuthorship). |
| authorName | Author name information |
| namePublishedInYear | The four-digit year in which the scientificName was published (http://rs.tdwg.org/dwc/terms/namePublishedInYear). |
| Brackets | Annotation if authorship should be put between parentheses. |
| nomenclaturalCode | The nomenclatural code under which the scientificName is constructed (http://rs.tdwg.org/dwc/terms/nomenclaturalCode). |
| taxonomicStatus | The status of the use of the scientificName as a label for a taxon (http://rs.tdwg.org/dwc/terms/taxonomicStatus). |
| resourceDescription | An account of the resource, including a data-paper DOI (http://purl.org/dc/terms/description) |

Data set name: Fauna Europaea - Mollusca-Bivalvia version 2.6.2 - hierarchy

Character set: UTF-8

Download URL: http://www.faunaeur.org/Data_papers/FaEu_Mollusca-Bivalvia_2.6.2.zip

Data format: CSV

| Column label | Column description |
|---------------|--|
| datasetName | The name identifying the data set from which the record was derived (http://rs.tdwg.org/dwc/terms/datasetName). |
| version | Release version of data set. |
| versionIssued | Issue date of data set version. |
| rights | Information about rights held in and over the resource (http://purl.org/dc/terms/rights). |
| rightsHolder | A person or organization owning or managing rights over the resource (http://purl.org/dc/terms/rightsHolder). |
| accessRights | Information about who can access the resource or an indication of its security status (http://purl.org/dc/terms/accessRights). |
| taxonName | The full scientific name of the higher-level taxon |

| | |
|--------------------------|---|
| scientificNameAuthorship | The authorship information for the scientificName formatted according to the conventions of the applicable nomenclaturalCode (http://rs.tdwg.org/dwc/terms/scientificNameAuthorship). |
| taxonRank | The taxonomic rank of the most specific name in the scientificName (http://rs.tdwg.org/dwc/terms/infraspecificEpithet). |
| taxonID | An identifier for the set of taxon information (http://rs.tdwg.org/dwc/terms/taxonID) |
| parentNameUsageID | An identifier for the name usage of the direct parent taxon (in a classification) of the most specific element of the scientificName (http://rs.tdwg.org/dwc/terms/parentNameUsageID). |
| resourceDescription | An account of the resource, including a data-paper DOI (http://purl.org/dc/terms/description) |

Additional information

The mollusks bivalvia taxonomy in Fauna Europaea proceeds from the [CLECOM](#) efforts (Falkner et al. 2001, Falkner et al. 2002). CLECOM (**C**heck **L**ist of **E**uropean **C**ontinental **M**ollusca) is a working group taking care about the taxonomy of continental (terrestrial and freshwater) mollusks. An equivalent working group on marine mollusks exists called [CLEMAM](#). Both CLEMAM and CLECOM have been established at the 10th International Malacological Congress of the Unitas Malacologica in 1989, including prominent malacologists, taking care about the publishing of valid and invalid names of all European terrestrial and freshwater molluscs, according to the [Code of Zoological Nomenclature](#).

Acknowledgements

The authors thank María de los Ángeles Ramos, head of the Fauna Ibérica Project, for entrusting the work to update the taxonomy of the Spanish freshwater bivalves and for recommending the first author to the Fauna Europaea. In addition, the authors would like to express their gratitude towards the [CLECOM](#) working group (see 'Additional information') for their efforts on preparing a checklist of European terrestrial and freshwater) molluscs.

References

- Araujo R, Ramos MA (1997) Evidence of intrafollicular fertilization in *Pisidium amnicum* (Müller, 1774) (Mollusca: Bivalvia). *Invertebrate Reproduction & Development* 32 (3): 267-272. DOI: [10.1080/07924259.1997.9672632](https://doi.org/10.1080/07924259.1997.9672632)
- Araujo R, Ramos MA (1999) Histological description of the gonad, reproductive cycle and fertilization of *Pisidium amnicum* (Müller, 1774) (Bivalvia: Sphaeriidae). *The Veliger* 42 (2): 124-131.

- Araujo R, Toledo C, Machordom A (2009) Redescription of *Unio gibbus* Spengler, 1793, A West Palaearctic Freshwater Mussel with Hookless Glochidia. *Malacologia* 51 (1): 131-141. [In English]. DOI: [10.4002/040.051.0109](https://doi.org/10.4002/040.051.0109)
- Bauer G (1987) Reproductive Strategy of the Freshwater Pearl Mussel *Margaritifera margaritifera*. *The Journal of Animal Ecology* 56 (2): 691-704. DOI: [10.2307/5077](https://doi.org/10.2307/5077)
- Bij de Vaate A, Jazdzewski K, Ketelaars HA, Gollasch S, Van der Velde G (2002) Geographical patterns in range extension of Ponto-Caspian macroinvertebrate species in Europe. *Canadian Journal of Fisheries and Aquatic Sciences* 59 (7): 1159-1174. [In English]. DOI: [10.1139/f02-098](https://doi.org/10.1139/f02-098)
- Bilandžija H, Morton B, Podnar M, Četković H (2013) Evolutionary history of relict *Congerina* (Bivalvia: Dreissenidae): unearthing the subterranean biodiversity of the Dinaric Karst. *Frontiers in Zoology* 10 (1): 5. DOI: [10.1186/1742-9994-10-5](https://doi.org/10.1186/1742-9994-10-5)
- Bogan A (2008) Global diversity of freshwater mussels (Mollusca, Bivalvia) in freshwater. *Developments in Hydrobiology*. 198. Springer, Netherlands, 139-147 pp. [In English]. URL: http://dx.doi.org/10.1007/978-1-4020-8259-7_16 [ISBN 978-1-4020-8259-7]. DOI: [10.1007/978-1-4020-8259-7_16](https://doi.org/10.1007/978-1-4020-8259-7_16)
- Carter J, Altaba C, Anderson L, Araujo R, Biakov A, Bogan A, Campbell D, Campbell M, Chen J, Cope JW, Delvene G, Dijkstra H, Fang Z, Gardner R, Gavrilova V, Goncharova I, Harries P, Hartman J, Hautmann M, Hoeh W, Hylleberg J, Jiang B, Johnston P, Kirkendale L, Kleemann K, Koppka J, Kříž J, Machado D, Malchus N, Márquez-Aliaga A, Masse J, McRoberts C, Middelfart P, Mitchell S, Nevesskaja L, Özer S, Pojeta J, Polubotko I, Pons JM, Popov S, Sánchez T, Sartori A, Scott R, Sey I, Signorelli J, Silantiev V, Skelton P, Steuber T, Waterhouse JB, Wingard GL, Yancey T (2011) A Synoptical classification of the Bivalvia (Mollusca). *Paleontological Contributions*, Number, 4. Paleontological Institute, The University of Kansas, Lawrence, Kansas, 47 pp. URL: <http://hdl.handle.net/1808/8287> [ISBN 1946-0279]
- Ellis AE (1978) *British Freshwater Bivalve Mollusca*. The Linnean Society of London. Academic Press, London, 109 pp.
- Falkner G, Bank R, Proschwitz T (2001) Check-list of the non-marine molluscan species-group taxa of the states of Northern, Atlantic, and Central Europe (CLECOM I). *Heldia* 4: 1-76.
- Falkner G, Ripken TE, Falkner M (2002) *Mollusques Continentaux de France: Liste de Référence Annotée et Bibliographie*. Museum National d'Histoire Naturelle, Paris, 350 pp. [ISBN 2.85653.539.9]
- Geist J (2010) Strategies for the conservation of endangered freshwater pearl mussels (*Margaritifera margaritifera* L.): a synthesis of Conservation Genetics and Ecology. *Hydrobiologia* 644 (1): 69-88. DOI: [10.1007/s10750-010-0190-2](https://doi.org/10.1007/s10750-010-0190-2)
- Graf D (2010) Funeral for the *Nouvelle École - iana* Generic Names Introduced for Freshwater Mussels (Mollusca: Bivalvia: Unionoidea). *Proceedings of the Academy of Natural Sciences of Philadelphia* 159 (1): 1-23. DOI: [10.1635/053.159.0101](https://doi.org/10.1635/053.159.0101)
- Graf DL, Cummings KS (2013) The Freshwater Mussels (Unionoidea) of the World (and other less consequential bivalves). MUSSEL Project Web Site. Release date: 2013 8 08. URL: <http://www.mussel-project.net/>
- Haas F (1969) Superfamilia Quadrulinae. *Das Tierreich*. 88. De Gruyter, Berlin, 265–326 pp. URL: <http://dx.doi.org/10.1515/9783111721569.265> [ISBN 9783111721569]. DOI: [10.1515/9783111721569.265](https://doi.org/10.1515/9783111721569.265)

- Heiler KC, Nahavandi N, Albrecht C (2010) A New Invasion Into an Ancient Lake - The Invasion History of the Dreissenid Mussel *Mytilopsis leucophaeata* (Conrad, 1831) and Its First Record in the Caspian Sea. *Malacologia* 53 (1): 185-192. DOI: [10.4002/040.053.0112](https://doi.org/10.4002/040.053.0112)
- Jong Yd, Verbeek M, Michelsen V, de Place Bjør P, Los W, Steeman F, Bailly N, Basire C, Chylarecki P, Stloukal E, Hagedorn G, Wetzel F, Glöckler F, Kroupa A, Korb G, Hoffmann A, Häuser C, Kohlbecker A, Müller A, Güntsch A, Stoev P, Penev L (2014) Fauna Europaea – all European animal species on the web. *Biodiversity Data Journal* 2: e4034. DOI: [10.3897/bdj.2.e4034](https://doi.org/10.3897/bdj.2.e4034)
- Kat PW (1984) Parasitism and the Unionacea (Bivalvia). *Biological Reviews* 59 (2): 189-207. DOI: [10.1111/j.1469-185x.1984.tb00407.x](https://doi.org/10.1111/j.1469-185x.1984.tb00407.x)
- Kennedy VS (2011) Biology of the uncommon dreissenid bivalve *Mytilopsis leucophaeata* (Conrad, 1831) in central Chesapeake Bay. *Journal of Molluscan Studies* 77 (2): 154-164. DOI: [10.1093/mollus/eyr002](https://doi.org/10.1093/mollus/eyr002)
- Killeen I, Aldridge D, Oliver G (2004) *Freshwater Bivalves of Britain and Ireland*. Occasional Publication, 82. Environment Agency, 114 pp.
- Korniusshin AV, Glaubrecht M (2002) Phylogenetic analysis based on the morphology of viviparous freshwater clams of the family Sphaeriidae (Mollusca, Bivalvia, Veneroidea). *Zoologica Scripta* 31 (5): 415-459. DOI: [10.1046/j.1463-6409.2002.00083.x](https://doi.org/10.1046/j.1463-6409.2002.00083.x)
- Lee T, Foighil DO (2003) Phylogenetic structure of the Sphaeriinae, a global clade of freshwater bivalve molluscs, inferred from nuclear (ITS-1) and mitochondrial (16S) ribosomal gene sequences. *Zoological Journal of the Linnean Society* 137 (2): 245-260. DOI: [10.1046/j.1096-3642.2003.00047.x](https://doi.org/10.1046/j.1096-3642.2003.00047.x)
- Lydeard C, Cowie RH, Ponder WF, Bogan AE, Bouchet P, Clarck SA, Cummings KS, Frest TJ, Gargominy O, Herbert DG, Hershler R, Perez KE, Roth B, Seddon M, Strong EE, Thompson FG (2004) The global decline of nonmarine molluscs. *BioScience* 54 (4): 321-330. DOI: [10.1641/0006-3568\(2004\)054\[0321:TGDONM\]2.0.CO;2](https://doi.org/10.1641/0006-3568(2004)054[0321:TGDONM]2.0.CO;2)
- Patterson DJ, Cooper J, Kirk PM, Pyle RL, Remsen DP (2010) Names are key to the big new biology. *Trends in Ecology & Evolution* 25 (12): 686-691. DOI: [10.1016/j.tree.2010.09.004](https://doi.org/10.1016/j.tree.2010.09.004)
- Prié V, Puillandre N (2013) Molecular phylogeny, taxonomy, and distribution of French *Unio* species (Bivalvia, Unionidae). *Hydrobiologia* 735 (1): 95-110. DOI: [10.1007/s10750-013-1571-0](https://doi.org/10.1007/s10750-013-1571-0)
- Pyle R, Michel E (2008) Zoobank: Developing and nomenclatural tool for unifying 250 years of biological information. *Zootaxa* 1950: 39-50. URL: <http://www.mapress.com/zootaxa/2008/zt01950p050.pdf>
- Reis J, Araujo R (2009) Redescription of *Unio tumidiformis* Castro, 1885 (Bivalvia, Unionidae), an endemism from the south-western Iberian Peninsula. *Journal of Natural History* 43: 1929-1945. DOI: [10.1080/00222930902993724](https://doi.org/10.1080/00222930902993724)
- Strayer DL, Downing JA, Haag WR, King TL, Layzer JB, Newton TJ, Nichols SJ (2004) Changing Perspectives on Pearly Mussels, North America's Most Imperiled Animals. *BioScience* 54 (5): 429-439. DOI: [10.1641/0006-3568\(2004\)054\[0429:cpopmn\]2.0.co;2](https://doi.org/10.1641/0006-3568(2004)054[0429:cpopmn]2.0.co;2)
- Vaughn C, Hakenkamp C (2001) The functional role of burrowing bivalves in freshwater ecosystems. *Freshwater Biology* 46 (11): 1431-1446. DOI: [10.1046/j.1365-2427.2001.00771.x](https://doi.org/10.1046/j.1365-2427.2001.00771.x)