



# A new species of the genus *Euxiphocerus* (Diptera, Dolichopodidae) from Korea with checklist and key to species of the genus

Young-Kun Kim<sup>‡</sup>, Sang Jae Suh<sup>§,||</sup>, Dongmin Kim<sup>¶</sup>

<sup>‡</sup> School of Applied Biosciences, Kyungpook National University, Daegu, Republic of Korea

<sup>§</sup> Department of Plant Medicine, Kyungpook National University, Daegu, Republic of Korea

| Institute of Plant Medicine, Kyungpook National University, Daegu, Republic of Korea

<sup>¶</sup> Department of Applied Biology, Kyungpook National University, Daegu, Republic of Korea

Corresponding author: Sang Jae Suh ([sjsuh@knu.ac.kr](mailto:sjsuh@knu.ac.kr))

Academic editor: Tiago Kütter Krolow

Received: 27 Mar 2024 | Accepted: 21 Jun 2024 | Published: 05 Jul 2024

Citation: Kim Y-K, Suh SJ, Kim D (2024) A new species of the genus *Euxiphocerus* (Diptera, Dolichopodidae) from Korea with checklist and key to species of the genus. Biodiversity Data Journal 12: e124067.

<https://doi.org/10.3897/BDJ.12.e124067>

ZooBank: [urn:lsid:zoobank.org:pub:2C0DBF3A-C513-4F5A-8D62-7B9FFEEA9618](https://www.zoobank.org/pub:2C0DBF3A-C513-4F5A-8D62-7B9FFEEA9618)

## Abstract

## Background

*Euxiphocerus* Parent, 1935 is a small genus consisting of three species only from the Afrotropical region.

## New information

During a survey of the long-legged flies from Korea, the authors discovered a new species, *Euxiphocerus lignicola* **sp. nov.** Detailed morphological characters and photographs of the new species, as well as a checklist and key to species of this genus, are provided herein. The two species described from Oriental China, *Systemus jinxiuensis* Lin & Yang, 2022 and *S. sinensis* Yang & Gaimari, 2004, are transferred to *Euxiphocerus* Parent, 1935 (**comb. nov.**) by similarity in external morphological characters.

## Keywords

*Euxiphocerus lignicola* sp. nov., Systemini, Medeterinae, Palearctic region

## Introduction

To date, the genus *Euxiphocerus* Parent, 1935, has consisted of three species only from the Afrotropical region (Grichanov 2009). This genus was erected by Parent (1935) with the type species *E. wulfi* Parent, 1935, and it was previously placed within the subfamily Rhapsiinae. Later, Ulrich (1981) included this genus in the subfamily Systeminae, which was designated by Robinson (1970) with the monotypic genus *Systemus* Loew, 1857. Subsequently, Bickel (1986) combined Systeminae with Medeterinae but did not mention the position of the genus *Euxiphocerus*. Following this, Grichanov (2009) proposed the tribe Systemini as a new status within the subfamily Medeterinae, placing the genus *Euxiphocerus* under this tribe along with the genus *Systemus*.

During a survey of the long-legged flies from Korea, authors observed a new *Euxiphocerus* species on tree trunks and in tree holes (Figs 1, 2) So far, the ecology and biology of the species of this genus are unknown, but they are believed to be associated with tree trunks, similar to *Systemus* species.



Figure 1. [doi](#)

*Euxiphocerus lignicola* sp. nov. male on tree trunk.

In addition, two species described from Oriental China, *S. jinxiuensis* Lin & Yang, 2022 and *S. sinensis* Yang & Gaimari, 2004, are transferred to *Euxiphocerus* Parent, 1935 (comb. nov.), having similar morphological features: male elongated postpedicel (5–6 times longer than width), short male 7th abdominal segment, a pair of large and a pair of small epandrial lobes, and a deeply bifurcated surstylus in males.



Figure 2. [doi](#)

*Euxiphocerus lignicola* sp. nov. female on tree trunk.

## Materials and methods

External features, including male genitalia, were photographed using an Olympus SZX 16 stereomicroscope (Olympus, Tokyo, Japan), Olympus BX50 compound microscope, Olympus DP25 camera, and Michrome 16 CMOS camera (Tucsen, Fujian, China). For observation, the dissected male terminalia was heated in 10% potassium hydroxide (KOH) solution at about 80°C for 20–25 min. A series of images were montaged using Helicon Focus (HeliconSoft, Kharkiv, Ukraine). All images were further processed using Adobe Photoshop. All specimens examined in the present study were deposited in the collection of the Department of Plant Medicine at Kyungpook National University, Daegu, Korea. Morphological terms followed Cumming and Wood (2017). Abbreviations used in the manuscript are as follows: **AF** = Afrotropical region; **OR** = Oriental region; **PA** = Palearctic region.

## Taxon treatments

### *Euxiphocerus* Parent, 1935

#### Nomenclature

*Euxiphocerus* Parent, 1935: 122. Type species: *Euxiphocerus wulfi* Parent, 1935 (monotypy).

## Diagnosis

Occiput is weakly convex backward. Compound eyes have tiny setulae between facets. Male Compound eyes are narrowly separated on face. Male face is narrow, narrowing downward. Vertex is not excavated. Upper occiput is distinctly concave. Vertical seta is nearly at level of oculus. Postocular setae are one-rowed and flattened. Male antennal pedicel is greatly reduced. Male postpedicel is 5–6 times longer than high at base. Arista-like stylus is apical. Mesonotum has flat mid-posterior slope. Posterior pair of acrostichal setae are distinctly larger than preceding pairs and offset laterally. 6 strong dorsocentral setae are decreasing in size anteriorly. Proepisternum is not haired, only with separate setae on mid-lower portion. Setulae on legs are uniformly short. Hind coxa has 1 outer seta at middle. Mid and hind femora do not have anterior preapical setae.  $R_{4+5}$  and  $M_1$  are subapically bowed. Distal sector of  $R_{4+5}$  and  $M_1$  have flexion. Anterior cubital cell is absent. Cua+CuP vein is weak. Male abdominal segment 6 is large triangular-shaped, with setae and setulae. Male 7th abdominal segment is short and has distinct tergite and sternite. Male genitalia are mostly exposed. Male hypopygium is sessile, with a pair of large and a pair of small epandrial lobes, with broad and deeply divided dorsal and ventral arms of surstylus. Apical subepandrial processes are absent and postgonite is indistinct. Male cercus usually thickened basally (based on Grichanov 2009).

## *Euxiphocerus lignicola* sp. nov.

- ZooBank [2A4FE108-7F14-4B79-9049-9DA5BC2A6E3D](https://doi.org/10.24436/2A4FE108-7F14-4B79-9049-9DA5BC2A6E3D)

## Materials

### *Holotype*:

- country: Korea; countryCode: Korea/KR; stateProvince: Daegu; county: Buk-gu; municipality: Sangyeok-dong; locality: KNU campus; verbatimLatitude: 35°53'24.7"N; verbatimLongitude: 128°36'29.9"E; year: 2018; month: 8; day: 3; sex: male; lifeStage: adult; occurrenceID: C1E90694-304B-5E3B-ACA1-E8B413107A10

### *Paratypes*:

- country: Korea; countryCode: KR; stateProvince: Daegu; county: Buk-gu; municipality: Sangyeok-dong; locality: KNU campus; verbatimLatitude: 35°53'24.7"N; verbatimLongitude: 128°36'29.9"E; year: 2016; month: 7; day: 22; sex: male; lifeStage: adult; occurrenceID: ADE17B77-5947-5042-83A3-5E56ACC7B383
- country: Korea; countryCode: KR; stateProvince: Daegu; county: Buk-gu; municipality: Sangyeok-dong; locality: KNU campus; verbatimLatitude: 35°53'24.7"N; verbatimLongitude: 128°36'29.9"E; year: 2019; month: 5; day: 24; sex: 2 males, female; lifeStage: adult; occurrenceID: AE02C3D5-7823-5B9C-B54D-F97080D615DD
- country: Korea; countryCode: KR; stateProvince: Daegu; county: Dalseo-gu; municipality: Dowon-dong; locality: Mt.Sampilbong; verbatimLatitude: 35°48'20.7"N; verbatimLongitude: 128°32'37.6"E; year: 2019; month: 9; day: 18; sex: female; lifeStage: adult; occurrenceID: 6D363C7F-B058-521B-807B-6FD581CE6475
- country: Korea; countryCode: KR; stateProvince: Daegu; county: Buk-gu; municipality: Sangyeok-dong; locality: KNU campus; verbatimLatitude: 35°53'24.7"N;

- verbatimLongitude: 128°36'29.9"E; year: 2021; month: 6; day: 2; sex: male, 2 females; lifeStage: adult; occurrenceID: 213E5E3A-ED87-5819-A732-E1324DD469A7
- e. country: Korea; countryCode: KR; stateProvince: Daegu; county: Dalseo-gu; municipality: Downon-dong; locality: Mt.Sampilbong; verbatimLatitude: 35°48'20.7"N; verbatimLongitude: 128°32'37.6"E; year: 2021; month: 7; day: 18; sex: female; lifeStage: adult; occurrenceID: CB33FDD9-B73E-5117-AEDA-6AFA3DBB1AA1
- f. country: Korea; countryCode: KR; stateProvince: Daegu; county: Dalseo-gu; municipality: Downon-dong; locality: Mt.Sampilbong; verbatimLatitude: 35°48'20.7"N; verbatimLongitude: 128°32'37.6"E; year: 2021; month: 7; day: 25; sex: male, female; lifeStage: adult; occurrenceID: 0B7E59BB-F021-5B22-8A6D-9CC6F12C1F77
- g. country: Korea; countryCode: KR; stateProvince: Daegu; county: Dalseo-gu; municipality: Downon-dong; locality: Mt.Sampilbong; verbatimLatitude: 35°48'20.7"N; verbatimLongitude: 128°32'37.6"E; year: 2023; month: 6; day: 18; sex: 2 males, 4 females; lifeStage: adult; occurrenceID: EB7AACB3-AB3B-5619-B47E-45BDF2FB0C30

### Description

Male (Figs 3, 4, 5). Body length: 2.6–2.8 mm. Wing length: 2.3–2.4 mm.

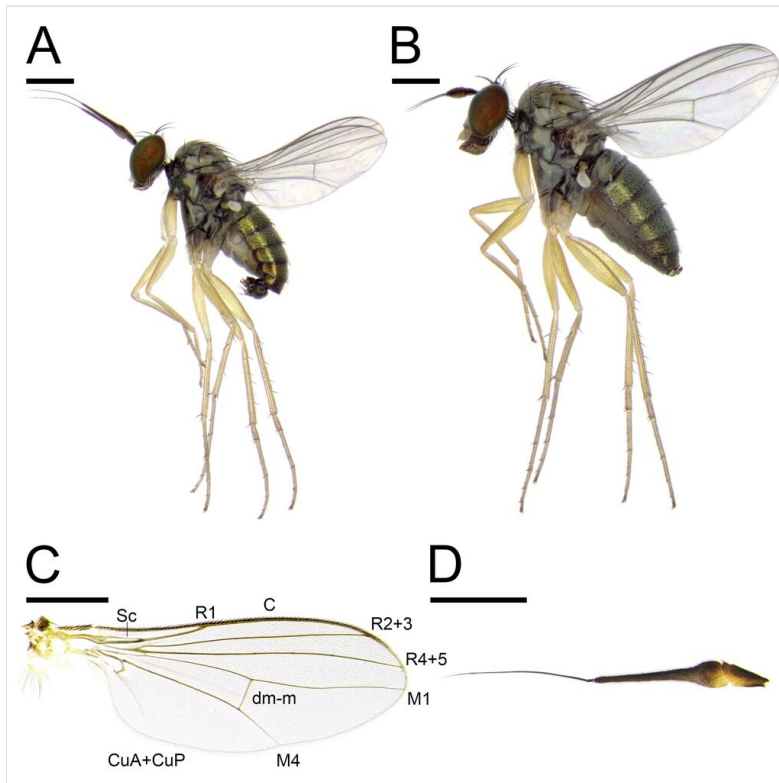
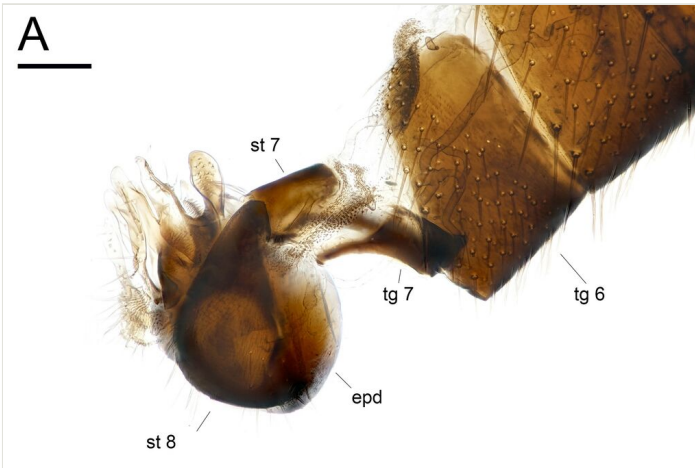


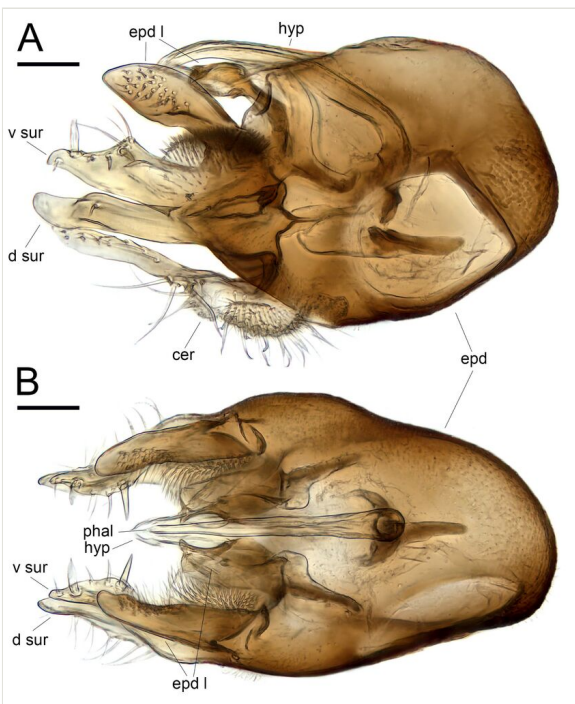
Figure 3. [doi](#)

*Euxiphocerus lignicola* sp. nov.; **A** male, lateral view; **B** female, lateral view; **C** male wing; **D** male antenna, lateral view. Scale bars: 0.5 mm.

**Head:** metallic bluish green with mainly black setae and covered with white tomentum; one long ocellar seta reclinate and divergent; one short postocellar seta proclinate; one long vertical seta proclinate and convergent, and positioned slightly forward than ocellar seta line; one pale yellow postvertical seta convergent and proclinate; postocular setae pale yellow in a single row; face and clypeus covered with thick white tomentum; compound eye with tiny white setulae between facets; lower occiput with one long pale yellow seta and several pale yellow setulae; scape dark brown to pale brown without setae; pedicel pale brown with apical ring of setae; postpedicel mostly dark brown, pubescent and long, six times as long as basal width, and basal 1/5 swollen and ventrally pale orange; arista-like stylus brown, short pubescent, and slightly shorter than postpedicel; palpus pale yellow with pale yellow setulae; proboscis brown with pale setulae. **Thorax:** metallic bluish green with mainly dark brown setae and covered with white tomentum; 11–12 pale brown acrostichial setae biseriate; six dorsocentral setae; one long and two tiny postpronotal setae; one presutural and one postsutural intra-alar setae; one presutural and two postsutural supra-alar setae; two notopleural setae; one postalar seta; two marginal scutellar setae, dark brown median seta about twice as long as pale brown lateral seta; proepisternum with one long and 2–3 fine pale yellow setae. **Legs:** mainly pale yellow and covered with pale yellow setulae; fore coxa with white setae and setulae; fore femur without strong setae; fore tibia with one short brown posterodorsal seta; fore tarsus without strong setae; fore tarsomere 5 slightly brownish at apical half; relative ratio of fore femur, tibia and tarsomere 1–5: 8.8:9.0:3.3:1.3:1.0:0.8:1.0; mid coxa with brown basal half with white setae and setulae; mid femur without strong setae; mid tibia with one anterodorsal and two posterodorsal setae and apical ring of dark brown setae; mid tarsus without strong setae; mid tarsomere 5 slightly brownish at apical half; relative ratio of mid femur, tibia, tarsomere 1–5: 10.8:11.3:5.8:3.5:2.3:1.3:1.0; hind coxa with one white seta; hind femur without strong setae; hind tibia with one anterodorsal and five posterodorsal setae and apical ring of dark brown setae; hind tarsus without strong setae; hind tarsomere 5 slightly brownish at apical half; relative ratio of hind femur, tibia, tarsomere 1–5: 8.2:9.6:1.6:4.2:2.2:1.6:1.0. **Wings:** hyaline; veins mainly pale brown; C ended at  $M_1$ ; Sc fused to  $R_1$  at 1/3;  $R_1$  slightly curved to posterior;  $R_{2+3}$  almost straight;  $R_{4+5}$  slightly curved to posterior;  $M_1$  straight and slightly curved to anterior at 3/4;  $R_{4+5}$  and  $M_1$  slightly convergent at apex;  $M_4$  straight; crossvein dm-m straight; relative ratio of apical  $M_4$  to dm-m: 1.0:0.6; CuA+CuP fold-like and not reaching the wing margin; calypter pale yellow with pale yellow setulae on fringe; halter pale yellow. **Abdomen:** metallic bluish green with mainly pale yellow to pale brown setae and setulae and covered with white tomentum; posterior margin of tergites with relatively long setae; 7th tergite short, covered by 6th segment; epandrium dark brown, longer than wide with inner dense setulae between the surstylus and epandrial lobe; hypandrium fused to epandrium, simple; epandrial lobe broad, with dense setae at inner side; surstylus pale yellow and deeply bifurcated, dorsal lobe finger-like, ventral lobe almost same length as dorsal lobe with thick setae at inner side; cercus pale yellow and slender, basal 2/5 thick; phallus apically pointed.

Figure 4. [doi](#)

*Euxiphocerus lignicola* sp. nov.; **A** male abdomen, lateral view. Scale bar: 0.1 mm. Abbreviations: **epd** = epandrium; **st** = sternite; **tg** = tergite.

Figure 5. [doi](#)

*Euxiphocerus lignicola* sp. nov.; **A** male genitalia, lateral view; **B** male genitalia, ventral view. Scale bars: 0.05 mm. Abbreviations: **d sur** = dorsal surstylus; **epd** = epandrium; **epd I** = epandrial lobe; **hyp** = hypandrium; **phal** = phallus; **v sur** = ventral surstylus.

**Female** (Figs 3, 6). Body length: 2.7–3.1 mm. Wing length: 2.4–2.7 mm. Almost the same as the male, except for some characteristics: postpedicel short, slightly longer than width; arista-like stylus about 2.5 times longer than postpedicel; palpus and proboscis larger than those in male; anterior half of tergite 8 dorsally spilited; tergite 10 with anterior one pair and a row of posterior 3–4 pairs of acanthophorite spines; cercus digitiform and arised to upside with one ventral setula.

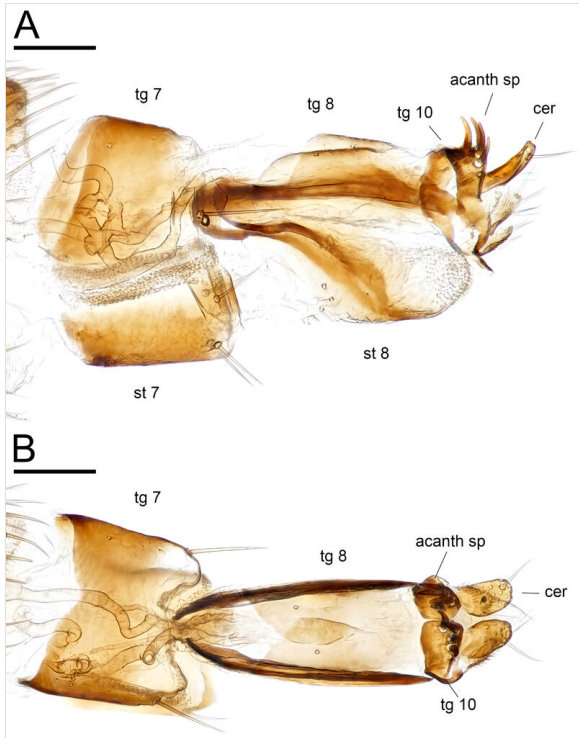


Figure 6. [doi](#)

*Euxiphocerus lignicola* sp. nov.; **A** female genitalia, lateral view. **B** ditto, dorsal view. Scale bars: 0.1 mm. Abbreviations: **acanth sp** = acanthophorite spine; **cer** = cercus; **st** = sternite; **tg** = tergite.

### Diagnosis

Setae on head and thorax are mainly black and dark brown. Arista-like stylus without any ornament at apex. Fore and hind coxae are mainly yellow to pale yellow. All coxae have white setae. Setae on abdomen are mainly pale yellow to pale brown. Dorsal lobe of surstylus without ventral projection.

### Etymology

The specific name is derived from the Latin words "*lignum*," meaning "wood" or "timber," and "*cola*" meaning "inhabitant" or "dweller."



## Ecology

Species of the genus *Systemus* are known to be tree-trunk associated, and the larvae develop in tree-hole debris (Oboňa et al. 2012, Vaillant 1978). In this research, this new species was also observed on tree trunks and in tree holes inhabited by other *Systemus* spp. In this regard, *Euxiphocerus* and *Systemus* species are believed to have similar or the same ecologies.

## Taxon discussion

This new species resembled *Euxiphocerus savannensis capensis* Grichanov, 2009, but it can be differentiated by the following characteristics: coxae with white setae (vs. with black setae); abdomen with pale yellow setae (vs. with black setae); dorsal lobe of surstylus without ventral projection (vs. with ventral projection).

## Notes

This is the first record of the genus *Euxiphocerus* from the PA.

## ***Euxiphocerus jinxiuensis* (Lin & Yang, 2022) comb. nov.**

### Nomenclature

*Systemus jinxiuensis* Lin & Yang, 2022: 294 (Type-locality: China, Guangxi, Jinxiu).

### Taxon discussion

This species has some similar morphological features of genus *Euxiphocerus*: elongated postpedicel (6 times longer than width), a pair of large and a pair of small epandrial lobes, and a deeply bifurcated surstylus in males.

## ***Euxiphocerus sinensis* (Yang & Gaimari, 2004) comb. nov.**

### Nomenclature

*Systemus sinensis* Yang & Gaimari, 2004: 176 (Type-locality: China, Yunnan, Xishuangbanna).

### Taxon discussion

This species has some similar morphological features of genus *Euxiphocerus*: elongated postpedicel (4.8 times longer than width), a pair of large and a pair of small epandrial lobes, and a deeply bifurcated surstylus in males.

## Checklist of the genus *Euxiphocerus* of the world

### *Euxiphocerus disjunctus* Grichanov, 2009

**Nomenclature:**

*Euxiphocerus disjunctus* Grichanov, 2009: 129 (Type-locality: South Africa, E. Cape, Grahamstown).

**Distribution:** AF: Namibia, South Africa (Grichanov 2009).

### *Euxiphocerus lignicola* sp. nov.

**Distribution:** PA: Korea.

### *Euxiphocerus savannensis* subsp. *capensis* Grichanov, 2009

**Nomenclature:**

*Euxiphocerus savannensis capensis* Grichanov, 2009: 131 (Type-locality: South Africa, E. Cape, Grahamstown).

**Distribution:** AF: South Africa (Grichanov 2009).

### *Euxiphocerus savannensis* subsp. *savannensis* Grichanov, 2009

**Nomenclature:**

*Euxiphocerus savannensis savannensis* Grichanov, 2009: 130 (Type-locality: Namibia, Katima Mulilo Dist., Ndopu village).

**Distribution:** AF: Namibia (Grichanov 2009).

### *Euxiphocerus wulfi* Parent, 1935

**Nomenclature:**

*Euxiphocerus wulfi* Parent, 1935: 122 (Type-locality: DR Congo, Rutshuru).

**Distribution:** AF: DR Congo (Grichanov 2009).

### *Euxiphocerus jinxiuensis* (Lin & Yang, 2022) comb. nov.

**Nomenclature:**

*Systemus jinxiuensis* Lin & Yang, 2022: 294 (Type-locality: China, Guangxi, Jinxiu).

**Distribution:** OR: China (Lin and Yang 2022).

***Euxiphocerus sinensis* (Yang & Gaimari, 2004) comb. nov.****Nomenclature:**

*Systemus sinensis* Yang & Gaimari, 2004: 176 (Type-locality: China, Yunnan, Xishuangbanna).

**Distribution:** OR: China (Yang and Gaimari 2004).

**Identification keys**

<b>Key to species of male genus <i>Euxiphocerus</i> of worldwide</b>		
Based on Grichanov (2009), Lin and Yang (2022) and Yang and Gaimari (2004)		
1	Postocular setae flattened; male antennal pedicel greatly reduced; male postpedicel 5–6 times longer than high at base; male 7th abdominal segment short; hypopygium sessile, with large epandrial lobe, with broad and deeply divided dorsal and ventral arms of surstylus	2 ( <i>Euxiphocerus</i> Parent, 1935)
–	Postocular setae simple; male antennal pedicel not reduced; male postpedicel at most 3–4 times longer than high at base; male 7th abdominal segment long, forming peduncle for hypopygium; epandrial lobe usually reduced to 2 pedunculate setae; dorsal and ventral arms of surstylus usually fused, with emargination at apex, or only ventral arm broad	<i>Systemus</i> Loew, 1857
2	Setae on head and thorax mainly pale white or pale brown	<i>E. disjunctus</i> Grichanov, 2009
–	Setae on thorax black or dark brown	3
3	Setae on head mainly pale white; arista swollen at apex	<i>E. sinensis</i> (Yang & Gaimari, 2004) comb. nov.
–	Setae on head mainly black or dark brown; arista normal	4
4	All coxae black	<i>E. jinxiuensis</i> (Lin & Yang, 2022) comb. nov.
–	At least fore coxa mainly yellow to pale yellow	5
5	Hind coxa mainly yellow to pale yellow	6
–	Hind coxa mainly black	7

6	All coxae with white setae; setae on abdomen mainly pale yellow to pale brown; dorsal lobe of surstylus without ventral projection	<i>E. lignicola</i> sp. nov.
–	All coxae with black setae; setae on abdomen mainly black; dorsal lobe of surstylus with ventral projection	<i>E. savannensis capensis</i> Grichanov, 2009
7	Femora entirely yellow; epandrial lobe elongate-triangular, with pointed apex and a row of strong setae	<i>E. wulfi</i> Parent, 1935
–	Fore femur except distal 1/4 and mid femur in basal half black; epandrial lobe rounded-ovate, covered with setulae	<i>E. savannensis savannensis</i> Grichanov, 2009

## Acknowledgements

We extend our deep appreciation to Dr. Igor Grichanov for his kind advice during our study.

## References

- Bickel DJ (1986) Australian species of *Systemus* (Diptera: Dolichopodidae). Records of the Australian Museum 38 (5): 263-270. <https://doi.org/10.3853/j.0067-1975.38.1986.350>
- Cumming JM, Wood DM (2017) Adult morphology and terminology. Chapter 3. In: Spriggs AH, Sinclair BJ (Eds) Manual of Afrotropical Diptera. Vol. 1. Introductory chapters and keys to Diptera families. South African National Biodiversity Institute, Pretoria, 44 pp. [ISBN 9781928224112].
- Grichanov IY (2009) Systematics of the genus *Euxiphocerus* Parent, 1935 (Diptera: Dolichopodidae). Caucasian Entomological Bulletin 5 (1): 127-131. <https://doi.org/10.23885/1814-3326-2009-5-1-127-131>
- Lin C, Yang D (2022) One new species of *Systemus* Loew found in the Oriental region (Diptera: Empidoidea: Dolichopodidae). Journal of Asia-Pacific Biodiversity 15 (2): 293-295. <https://doi.org/10.1016/j.japb.2021.12.004>
- Oboňa J, Pollet M, Naglis S (2012) First records of one genus and three species of long-legged flies (Diptera: Dolichopodidae) from Slovakia. Folia faunistica Slovaca 17 (4): 357-360.
- Parent O (1935) Dipteres Dolichopodides du Congo Belge. Nouvelle contribution. Revue de Zoologie et de Botanique Africaines 27: 112-129.
- Robinson H (1970) The subfamilies of the family Dolichopodidae in North and South America (Diptera). Papeis Avulsos de Zoologia 23 (6): 53-62. <https://doi.org/10.11606/0031-1049.1970.23.p53-62>
- Ulrich H (1981) Zur systematischen Gliederung der Dolichopodiden (Diptera). Bonner Zoologische Beiträge 31: 385-402.

- Vaillant F (1978) Les *Systemus* et leur habitat dendrotelme (Dipt. Dolichopodidae). Bulletin de la Société entomologique de France 83 (3–4): 73-85. <https://doi.org/10.3406/bsef.1978.21637>
- Yang D, Gaimari SD (2004) Discovery of *Systemus* in the Oriental Region, with description of one new species (Diptera: Dolichopodidae). Pan-Pacific Entomologist 79 (3/4): 176-178.