

Changes in the editorial team of *Plant Ecology and Evolution*

Elmar Robbrecht¹ & Natacha Beau²

¹Editor in chief

²Production editor

It is a pleasure to inform our readership that the team of Associate Editors and the Editorial Board of *Plant Ecology and Evolution* have expanded in the course of 2017. We welcome three new Associate Editors and one new member of our Editorial Board.

In the past years Dr. Katharina B. Budde (Université de Bordeaux, BIOGECO Biodiversity, Genes and Communities, Bordeaux Aquitaine & INRA, Cestas, France) acted a number of times as guest editor for our journal (a few times in collaboration with Myriam Heuertz). She now accepted to become an Associate Editor. Her expertise (population genetics; molecular ecology; Neotropics and tropical Africa) is comparable to that of some other editors in our team, but focuses on ecological population genetics and genomics of tree species and the effect of abiotic and biotic interactions.



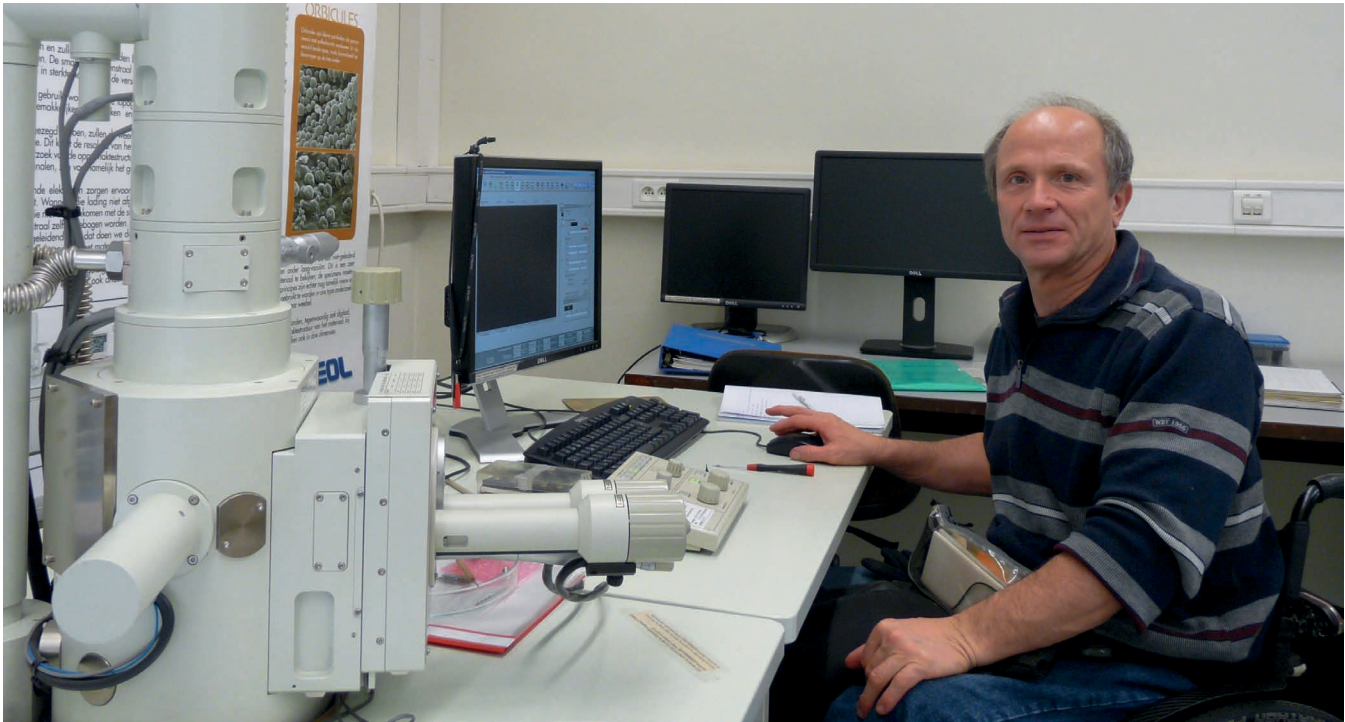
Dr. Katharina B. Budde, Université de Bordeaux & INRA, France

Dr. Alexander Vrijdaghs (Institute of Botany & Microbiology, KU Leuven & Botanic Garden Meise, Belgium) is the second new associate editor. He works on floral development in Amaranthaceae s. lat., in the cyperid clade, in Orchidaceae, in Rubiaceae and in other families. Examples of his ontogenetic studies are published in issues 148(2) and 144(1 & 3) of our journal.

Prof. Dr. André O. Simões (Department of Plant Biology, Institute of Biology, State University of Campinas, Brazil) accepted too to join our team of Associate Editors. He works on Apocynaceae and has expertise in taxonomy, phylogeny, biogeography and morphology. His neotropical expertise represents a hitherto much missed competence in our team. The joining of a Latin American botanist is also a welcome further step in the internationalisation of our journal.



Prof. Dr. André O. Simões, State University of Campinas, Brazil



Dr. Alexander Vrijdaghs, KU Leuven & Botanic Garden Meise, Belgium

Prof. Dr. Federico Selvi (Dipartimento di Scienze delle Produzioni Agroalimentari e dell'Ambiente, Università di Firenze, Italy) accepted our invitation to become a member of our Editorial Board. He brings in expertise in floristics and phytogeography of the Mediterranean region and is interested in diversity, evolution and ecology of seed plants, from the population to the community level, with special reference to forest ecosystems. He is also working on systematics, ecology and evolutionary dynamics of serpentine tolerance and nickel hyperaccumulation capacity, with special emphasis on Boraginaceae and Brassicaceae.

Finally, our Associate Editors Hans ter Steege and Catarina Rydin informed us that they had to resign editorial work for our journal because of career changes and increasing work load. However, they accepted to stay in the journal's team as members of our Editorial Board: we are very thankful for that.

We gratefully acknowledge Catarina and Hans for many years of careful editorial work. And we warmly welcome Katharina, Alexander, André and Federico in our team and look forward to fruitful editorial cooperation. With the new expertise aboard, we are convinced that *Plant Ecology and Evolution* will fulfil even better its mission of assessing and reporting new research to the scientific community.

On behalf of all fellow editors and all board members we warmly thank the four new scientists in our team for their pro bono willingness to serve our journal.



Prof. Dr. Federico Selvi, Università di Firenze, Italy