

T. VENKATESWARLU

Teratology

A NOTE ON AN ABNORMAL PECTORAL FIN IN *PUNTIUS AMPHIBIA* (VAL.)

NOTATKA O NIENORMALNEJ PŁETWIE PIERSIOWEJ  
U *PUNTIUS AMPHIBIA* (VAL.)

Zoological Survey of India, Rajendranagar, Patna-16, Bihar

This paper deals with an account of an abnormal pectoral fin in *Puntius amphibia* (Val.), obtained from the river Ganges at Patna (Bihar, India). The specimen possessed two pectoral fins, instead of one, on the left side.

Many workers have described deformities of various parts of fishes. But their morphological anomalies like pugheadedness, vertebral fusion, absence of fins, deformities in the tail region, etc. Dawson (1964, 1966, and 1967) has made an excellent contribution to the study of teratology of fishes. Dawson (1968) also reported, for the first time, an anomalous fin ray in the dorsal fin of *Microgobius gulosus* (Girard). Gupta (1969) recorded two abnormal specimens of *Eleutheronema tetradactylum* Shaw, one with only one pelvic fin, and the other without any pelvic fins at all.

The present account deals with an extra pectoral fin in *Puntius amphibia* (Val.), which is a common fresh water cyprinoid. Probably, this is the first record of an extra pectoral fin in fishes and is of uncommon occurrence.

In April, 1968 several specimens of *Puntius amphibia* (Val.) have been obtained from the local fish catches. They were caught from the river Ganges at Patna (Bihar, India) by cast net. In the course of investigation of the catch, a single abnormal specimen was found (Fig. 1a). In this specimen the pectoral fin on the right side is normal, with 15 rays (Fig. 1b), as usual, but on the left side there are two pectoral fins instead of one (Fig. 1c). Both the fins are well developed and have a common pectoral girdle. The fins on both sides are situated at the same distance from the snout (1.7 cm.) and all the three fins are of the same length (1.4 cm.). There is no change either in the shape of the body or other fins. The specimen measures 8.0 cm in total length.

According to Dawson (1967) "the abnormalities in fishes are usually considered to originate from mutations, teratogenic effects of adverse environmental factors on developing embryos and young, or trauma".

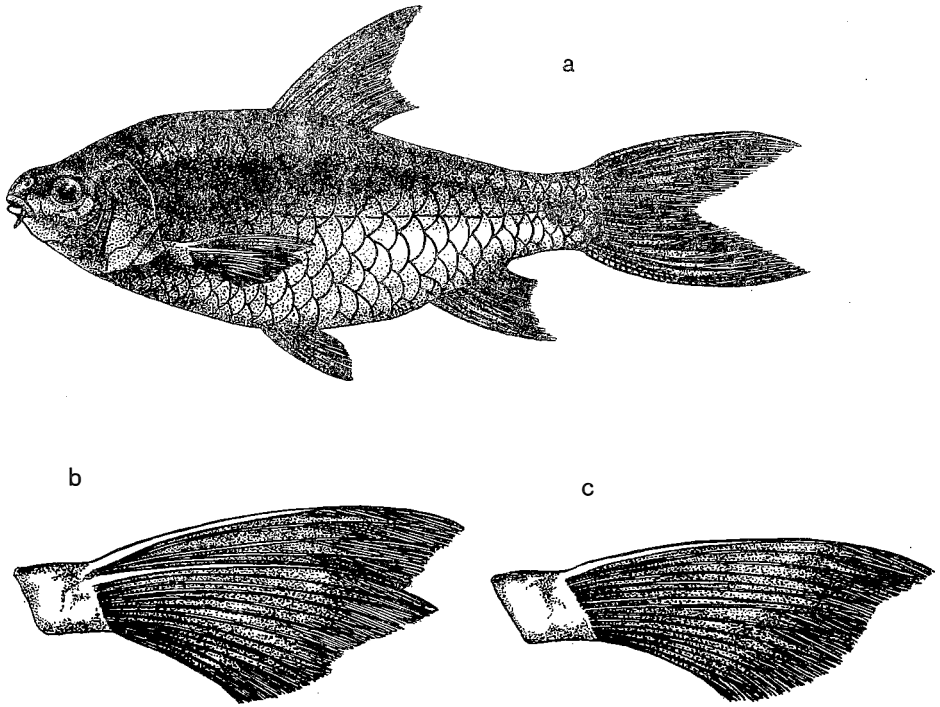


Fig.1. *Puntius amphibia* (Val.) with an abnormal pectoral fin:  
 (a) - entire fish, (b) - abnormal left pectoral fin, (c)- normal  
 right pectoral fin

In the present specimen the anomaly may be due to localized injury during larval or early post-larval development.

The specimen has been kept in the Museum of Gangetic Plains Regional Station, Zoological Survey of India, Patna-16.

#### Acknowledgements

My thanks are due to Dr. C. E. Dawson, Gulf Coast Research Laboratory, Ocean Springs, Mississippi, for sending his reprints, to Shri Bholanath, Officer-in-charge, G. P. R. S., Z. S. I., Patna-16, for his help and encouragement, and to Mr. D. Sengupta for the preparation of figure.

#### REFERENCES

- Dawson, C. E., 1964: A bibliography on anomalies of fishes. - Gulf Res. Repts. 1, 6:308-399.
- Dawson, C. R., 1966: A bibliography of anomalies of fishes. Supplement 1. - Gulf Res. Repts. 2, 2:169-176.

- D a w s o n, C.R., 1967: Notes on teratological Gobioid fishes from Louisiana and Maryland. - Proc. Louis. Acad. Sci. 30:74-79.
- D a w s o n, C.R., 1968: An adventitious dorsal fin-ray in *Microgobius gulosus* (Pisces: Gobiidae). - Anat. Anz. 122:498-501.
- G u p t a, M.V., 1969: Abnormalities in pelvic fins and girdles of *Eleutheronema tetradactylum* Shaw. - Sci. Cult. 35, 2:70-71.

NOTATKA O NIENORMALNEJ PŁETWIE PIERSIOWEJ U PUNTIUS  
AMPHIBIA (VAL.)

S t r e s z c z e n i e

Praca informuje o występowaniu nienormalnych płetw piersowych u *Puntius amphibia* (Val.), niewielkiej ryby z rodziny karpiowatych, wyłowionej z rzeki Ganges w miejscowości Patna, w indyjskim stanie Bihar. Okaz, mierzący 8 cm długości, posiadał dwie płetwy piersiowe po stronie lewej.

ЗАМЕТКА ОБ НЕНОРМАЛЬНЫМ ГРУДНОМ ПЛАВНИКЕ ПУНТЮСА,  
PUNTIUS AMPHIBIA (VAL.)

Р е з ю м е

Ненормальный грудной плавник описывается на одном экземпляре пунтюса, *Puntius amphibia* (Val.), мелкой карповой рыбы, выловленной из реки Ганги в городе Патне, в Индийском штате Бигар. Образец, длиной в 8 см, имеет два грудных плавника с левой стороны, в место одного.

Received 10.V.1972 r.

Address:

T. Venkateswarlu  
Zoological Survey of India  
Rajendranagar, Patna-16,  
Bihar-India