

# Performance of intron 7 of the $\beta$ -fibrinogen gene for phylogenetic analysis: An example using gladiator frogs, *Boana* Gray, 1825 (Anura, Hylidae, Cophomantinae)

Ruth Amanda Estupiñán<sup>1,2</sup>, Sávio Torres de Farias<sup>2,3</sup>, Evonnildo Costa Gonçalves<sup>4</sup>,  
Mauricio Camargo<sup>1</sup>, Maria Paula Cruz Schneider<sup>5</sup>

**1** Instituto Federal da Paraíba, Campus, João Pessoa, Paraíba, PB. CEP 58015-435, Brazil **2** Programa de Pós-graduação em Ciências Biológicas (Zoologia), Departamento de Sistemática e Evolução, Universidade Federal da Paraíba, João Pessoa, PB. CEP 58051-900, Brazil **3** Laboratório de Genética Evolutiva – Paulo Leminski, Departamento de Biologia Molecular, Universidade Federal da Paraíba, João Pessoa, PB. CEP 58051-900, Brazil **4** Laboratório de Tecnologia Biomolecular-LTB, Instituto de Ciências Biológicas, Universidade Federal do Pará, Belém, PA. CEP 66075-110, Brazil **5** Centro de Genômica e Biologia de Sistemas, Universidade Federal do Pará, Belém, PA, CEP 66075-110, Brazil

Corresponding author: Ruth Amanda Estupiñán ([ruthamanda.estupinan@gmail.com](mailto:ruthamanda.estupinan@gmail.com))

Academic editor: Uri García-Vázquez | Received 21 April 2022 | Accepted 22 July 2022 | Published 22 February 2023

<https://zoobank.org/4767C7D0-49CA-4D64-A07C-1FFFAD20836B>

**Citation:** Estupiñán RA, Torres de Farias S, Gonçalves EC, Camargo M, Cruz Schneider MP (2023) Performance of intron 7 of the  $\beta$ -fibrinogen gene for phylogenetic analysis: An example using gladiator frogs, *Boana* Gray, 1825 (Anura, Hylidae, Cophomantinae). ZooKeys 1149: 145–169. <https://doi.org/10.3897/zookeys.1149.85627>

## Abstract

*Boana*, the third largest genus of Hylinae, has cryptic morphological species. The potential applicability of *b-fibrinogen intron 7 – FGBI7* is explored to propose a robust phylogeny of *Boana*. The phylogenetic potential of *FGBI7* was evaluated using maximum parsimony, MrBayes, and maximum likelihood analysis. Comparison of polymorphic sites and topologies obtained with concatenated analysis of *FGBI7* and other nuclear genes (*CXCR4*, *CXCR4*, *RHO*, *SIAH1*, *TYR*, and *28S*) allowed evaluation of the phylogenetic signal of *FGBI7*. Mean evolutionary rates were calculated using the sequences of the mitochondrial genes *ND1* and *CYTB* available for *Boana* in GenBank. Dating of *Boana* and some of its groups was performed using the RelTime method with secondary calibration. *FGBI7* analysis revealed high values at informative sites for parsimony. The absolute values of the mean evolutionary rate were higher for mitochondrial genes than for *FGBI7*. Dating of congruent *Boana* groups for *ND1*, *CYTB*, and *FGBI7* revealed closer values between mitochondrial genes and slightly different values from those of *FGBI7*. Divergence times of basal groups tended to be overestimated when mtDNA was used and were more accurate when nDNA

was used. Although there is evidence of phylogenetic potential arising from concatenation of specific genes, *FGBI7* provides well-resolved independent gene trees. These results lead to a paradigm for linking data in phylogenomics that focuses on the uniqueness of species histories and ignores the multiplicities of individual gene histories.

### Keywords

Anura evolutionary rate, divergence time, gladiator frogs, indels, nuclear DNA, nucleotide substitution rate, phylogenetic hypothesis, polymorphic sites

## Introduction

Using only one type of trait, such as mitochondrial DNA (mtDNA), to detect phylogenetic relationships can lead to noise (Rubinoff and Holland 2005). Frog mitochondrial DNA (mtDNA) has high sequence evolution rates and many gene arrangements, making it difficult to find conserved regions (Zhang et al. 2013). The low mutation rates in mtDNA may also limit the ability to distinguish related species (Ballard and Whitlock 2004; Nabholz et al. 2008, 2009).

Introns in nuclear protein coding genes have several properties that make them useful for phylogenetic analyses of recently evolved vertebrates (Igea et al. 2010; Schmitz et al. 2017). Because they are flanked by conserved exons, they are easily amplified by polymerase chain reaction (PCR) in a variety of taxa that provide sites for PCR primers (Prychitko and Moore 2003). Introns evolve more slowly than mtDNA (Prychitko and Moore 1997, 2000; Johnson and Clayton 2000) and more rapidly than nuclear exon sequences (Hughes and Yeager 1997; Li 1997).

To obtain data on robust phylogenetic and temporal divergence in phylogeographic studies of frogs, nuclear intron data have often been used in conjunction with mtDNA data (Zhang et al. 2013; Lourenço et al. 2015; Faivovich et al. 2021; Pereyra et al. 2021). Rapidly evolving noncoding introns are used to resolve problematic nodes at the species, genus, and family levels (Prychitko and Moore 1997; Igea et al. 2010; Folk et al. 2015), and they show more robust and congruent phylogenetic signals than exons (Chen et al. 2017).

The small size of aligned base pairs (bp) and low genetic variability (variable site dataset) of *FGBI7* resulted in few informative traits and discordance between mtDNA and nuclear DNA (nDNA) (Gonçalves et al. 2007; Velo-Antón et al. 2008; Brunes et al. 2010, 2014; Prado et al. 2012; Maia-Carvalho et al. 2014; Menezes et al. 2016, 2020). These results are in contrast with previous studies related to *FGBI7* in amphibians. Thus, *FGBI7* is a valuable marker for assessing phylogenetic relationships at the family level and is likely suitable for phylogenetic analyses between closely related taxa that have recently diverged (Sequeira et al. 2006; Teixeira et al. 2015).

With 99 taxa, the Neotropical gladiator frogs of *Boana* Gray, 1825, constitute the third largest genus within Hylinae (Frost 2023). The phenotypically very similar species and lack of reliable diagnostic characters difficult the precise identity of *Boana*.

Studies of cariology, morphology, vocalizations, and molecular characters have revealed cryptic species, new species, and changes in the classification of *Boana* groups (Caminer and Ron 2014, 2020; Duellman et al. 2016; Fouquet et al. 2016, 2021; Orrico et al. 2017; Ferro et al. 2018; Peloso et al. 2018; Pinheiro et al. 2019a; Lyra et al. 2020; Faivovich et al. 2021).

Two questions prompted us to conduct this study: 1) Is *FGBI7* a phylogenetic signal for *Boana* with more robust topologies than other nuclear genes? 2) Does *FGBI7* contribute to explaining the phylogeny of *Boana*? To answer these questions, we reconstructed the evolutionary history of *Boana* using several molecular markers, including *FGBI7*.

## Materials and methods

### Taxonomic sampling and DNA isolation

DNA samples were obtained from captured specimens and donations from herpetological collections (Appendix 1: Table A1). Samples included taxa from most known species groups of *Boana* (Pinheiro et al. 2019a; Faivovich et al. 2021).

Total DNA extraction from muscle or liver tissue was performed using the SDS -proteinase K/phenol-chloroform extraction method (Sambrook and Rusell 2001). *FGBI7* was sequenced on tissues from twenty-four *Boana* species (ingroup), three taxa of *Aplastodiscus*, one sample of *Bokermannohyla circumdata*, one sample of *Nesorohyla kanaima*, and one of *Callimedusa tomopterna* (outgroups). Primers 5'-CCATGACAATACACAACGGC-3' and 5'-ACCACCATCCACCACCATC-3' were designed based on the sequence of *Xenopus laevis* (Roberts et al. 1995). After selecting the most conserved regions of *FGBI7*, the NCBI Primer- BLAST tool was used to design the target-specific primers (Ye et al. 2012). The amplification protocol was based on a 25- $\mu$ L solution of 0.5–2.0  $\mu$ L of the DNA template, 2.5  $\mu$ L of 10 $\times$  PCR buffer, 0.5  $\mu$ L of each primer (10 pmol/ $\mu$ L), 0.5–1.5  $\mu$ L of MgCl<sub>2</sub>, 1  $\mu$ L of the dNTPs, and 0.15  $\mu$ L of Ex Taq DNA polymerase. The PCR protocol included 3 min at 94 °C, 35 (or 30) cycles of 1 min at 94 °C, 1 min at 60 °C (or 59 s and 55 °C), and 1 min at 72 °C, and a final extension at 75 °C for 5 min.

### Sequencing and alignment

PCR products were sequenced using a MegaBACE automated DNA sequencer (GE Healthcare) and the DYEnamic ET dye terminator kit (GE Healthcare) according to the manufacturer's instructions. Each sample was sequenced with both forward and reverse primers to confirm the observed mutations.

After searching available data in GenBank, we compared the phylogenetic signal of *FGBI7* with that of C-X-C motif chemokine receptor 4 (*CXCR4*), single exon of recombination activating gene 1 (*CXCR4*), exon 1 of Rhodopsin (*RHO*), seven-in-absentia homolog 1 (*SIAH1*), exon 1 of Tyrosinase (*TYR*), and 28S ribosomal rDNA.

Sequence alignments were made using MAFFT version 7 (Katoh and Standley 2013). Alignments were edited using BioEdit (Hall 1999). Exon sequences were then concatenated using Sequence Matrix 1.7.8 (Vaidya et al. 2011) and subjected to various phylogenetic analysis methods using the same parameters as for individual genes. Genes were concatenated, although some sequences within the *Boana* taxa were not available. Missing bases that corresponded to unsequenced data were marked with a question mark.

To compare polymorphic sites and basic sequence statistics, *Boana* sequences were analyzed for conserved, variable, parsimony-informative, and singleton sites using MEGA X (Kumar et al. 2018). The number of sites without missing data (Pb\*) was calculated for all genes by adding the conserved sites (C-S), singleton sites (S-S), and informative parsimony sites (P-I).

## Phylogenetic analysis

Each set of sequences for each marker was analyzed using maximum parsimony (**MP**), Bayesian analysis (**MB**), and maximum likelihood (**ML**). MP was performed in the TNT Willi Hennig Society Edition (Goloboff and Catalano 2016), and phylogenetic trees were constructed using the New Technology Search routine. Parameters selected included sectorial search, ratchet, drift, and tree fusing. A specific search was performed with an initial setting of 100 levels and run 100 times to define the minimum sequence length. Deletions were considered as a fifth base type.

Support for clades was tested using a jackknife procedure with a removal rate of 0.36, which is the most congruent value with bootstrapping (Farris et al. 1996), with absolute frequencies of 50 RAS + TBR per replicate for a total of 1,000 replicates. Consistency indices (CI), retention indices (RI), and rescaled consistency indices (CR) were calculated.

MB analysis of the evolutionary model were performed using MEGA X. For sequences with many gaps, the “use all sites” setting was selected (Tamura et al. 2011). Bayesian and Akaike information criteria were used to select the most appropriate nucleotide substitution model (Posada and Buckley 2004). The MB was run in MrBayes 3.2.7 (Ronquist et al. 2012), and sequences were considered as individual partitions for each model.

One run consisted of two repeated Monte Carlo Markov chains. The run was based on considering four chains, and the default settings for the state frequency priors (statefreqpr) were set as fixed (equal) and the substitution rate priors (ratepr) were set as variable. The other priors were set to default settings, and 85 million generations were performed (with a burn-in fraction of 0.25). Stabilization of the resulting parameters was assessed using Tracer version 1.7 (Rambaut et al. 2018) and Bayesian probability theory.

The ML analysis was performed with MEGA X software (Kumar et al. 2018) using the best substitution model generated with the same program. Bootstrap support values were used to estimate clade support based on 1,000 replicates. Missing data and gaps were included in the analyses using the “use all sites” commands. Tree inference

options included nearest neighbor replacement and initial tree for ML with automatic configuration (default: NJ /BioNJ); system resource use, number of threads 1.

Phylogenetic trees were compared for each marker based on their topology and monophyletic groups defined for *Boana* (Faivovich et al. 2005, 2021; Pinheiro et al. 2019a). Trees were edited in Inkscape 0.48.5, FigTree V 1.4.4 (Rambaut 2016), and MEGA X.

## Mean evolutionary rates of *ND1*, *CYTB*, and *FGBI7* nuclear genes

Mean evolutionary rates for *Boana* species were based on mitochondrial and informative genes such as *ND1* and *CYTB* from GenBank (Zhang et al. 2013). For phylogenetic inference ML, the sequences of each gene were submitted to the MEGA X software. Molecular dating for each tree, including the *FGBI7* obtained, was performed using the RelTime method (Tamura et al. 2018), a fast and powerful dating algorithm very similar to the results obtained by the Bayesian method (Mello et al. 2017; Mello 2018).

To establish a chronological scale for clade/lineage evolution, the divergence times established by Duellman et al. (2016) were used to calibrate the phylogenetic trees of the mitochondrial genes *ND1*, *CYTB*, and *FGBI7*. The following three divergence times were used for the *ND1* tree: I – divergence between *Aplastodiscus* and *Boana*, at 34.2 Ma; II – divergence of *Boana pulchella* group from the other *Boana* groups, at 22.6 Ma; and III – separation between *Boana pellucens* and *Boana rufitela*, at 5.30 Ma. The *FGBI7*-based phylogenetic tree was calibrated with the same divergence time of 34.2 Ma. The *CYTB*-based phylogenetic tree was calibrated with the divergence time between *Bokermannohyla* and *Aplastodiscus* + *Boana* of 36.8 Ma.

Divergence times were calibrated with a normal distribution and 95% confidence interval. Relative evolution rate values for each node were obtained using RelTime-Rate. Absolute evolution rates were obtained by dividing the relative rates by the scaling factor (ratio of absolute times/relative times) (Tamura et al. 2018). Mean evolutionary rates were calculated based on the absolute rates of all clades of *ND1*, *CYTB*, and *FGBI7*. After setting the calibration conditions, the “use all sites” option was selected to include all gaps and missing data in the branch length calculation (Mello 2018).

## Results

### FGBI7 DNA sequences

The average length of the *FGBI7* sequences examined was 478 base pairs. The sequences contained both single and multiple insertions and deletions. *FGBI7* sequences of 710 bp were recorded for *Boana albomarginata*, *Boana albopunctata*, *Boana lanciformis*, and *Boana raniceps*. Alignment of long (710bp) and short sequences (478 bp) revealed short and larger deletions (230–438 positions). However, polymorphism was detected when comparing the long and short sequences.

## Nuclear DNA (nDNA) contribution to the phylogeny of *Boana*

In this study, new *FGBI7* sequences were generated for 24 *Boana* taxa. For comparison of singleton and parsimony informative sites, available sequences for 11 nuclear genes and two mitochondrial genes were retrieved from GenBank. The low number of available sequences for *c-myc2*, *c-myc3*, *H3a*, *KIAA1239*, and *POMC* for a large number of *Boana* taxa prevented their inclusion in the phylogenetic analysis of the group. *CXCR4*, *RHO*, *SIAH1*, *TYR*, and *28S* were used for the phylogenetic evaluation of *Boana* (Table 1).

### Polymorphic sites

Informative singleton and parsimony sites comprised between 36% and 63% of all sites. The percentage of singleton sites was generally high for all genes. The percentage of parsimony-informative sites relative to the total number of sites, excluding missing data-Pb\* for each of the compared genes, showed that the data based on *FGBI7*, *TYR*, and *CXCR4* gave more sensitive and highly informative performance (Table 1). Although the P-I percentage did not differ between concatenated genes (C-genes) and *FGBI7*, the percentage of P-I/Pb\* parsimony-informative sites was higher for *FGBI7*. With the exception of *28S*, the frequency of A+T was higher than 50% for all genes, with *FGBI7* having the highest value.

**Table 1.** Comparative polymorphic sites and basic sequence statistics in *Boana* nDNA.

	<i>CXCR4</i>	<i>FGBI7</i>	<i>RAG1</i>	<i>RHO</i>	<i>SIAH1</i>	<i>TYR</i>	<i>28S</i>	C-genes	C-genes (1)	<i>ND1</i>	<i>Cyt b</i>
S	30	24	19	51	26	29	26	58	50	58	53
Pb	676	478	428	316	397	532	823	3650	1686	941	385
Pb*	675	466	428	316	397	532	786	3606	1673	941	385
C-S	497	286	368	254	358	387	691	2817	1153	445	198
S-S(%)	70(39)	85(47)	35(58)	27(44)	18(46)	53(37)	53(56)	358(46)	220(42)	42(8)	20(11)
P-I(%)	108(61)	95(53)	25(42)	35(56)	21(54)	92(63)	42(44)	424(54)	300(58)	454(92)	167(89)
PIS(%) (100*P-I/Pb*)	16	20.39	5.84	11.08	5.29	17.29	5.34	11.76	17.93	99.51	99.56
AT (%)	50.4	60.4	55.8	54.5	51.3	51.9	42.5	51.3	53.2	59.5	59.3
CG (%)	49.6	39.6	44.2	45.5	48.7	48.1	57.5	48.7	46.8	40.5	40.7

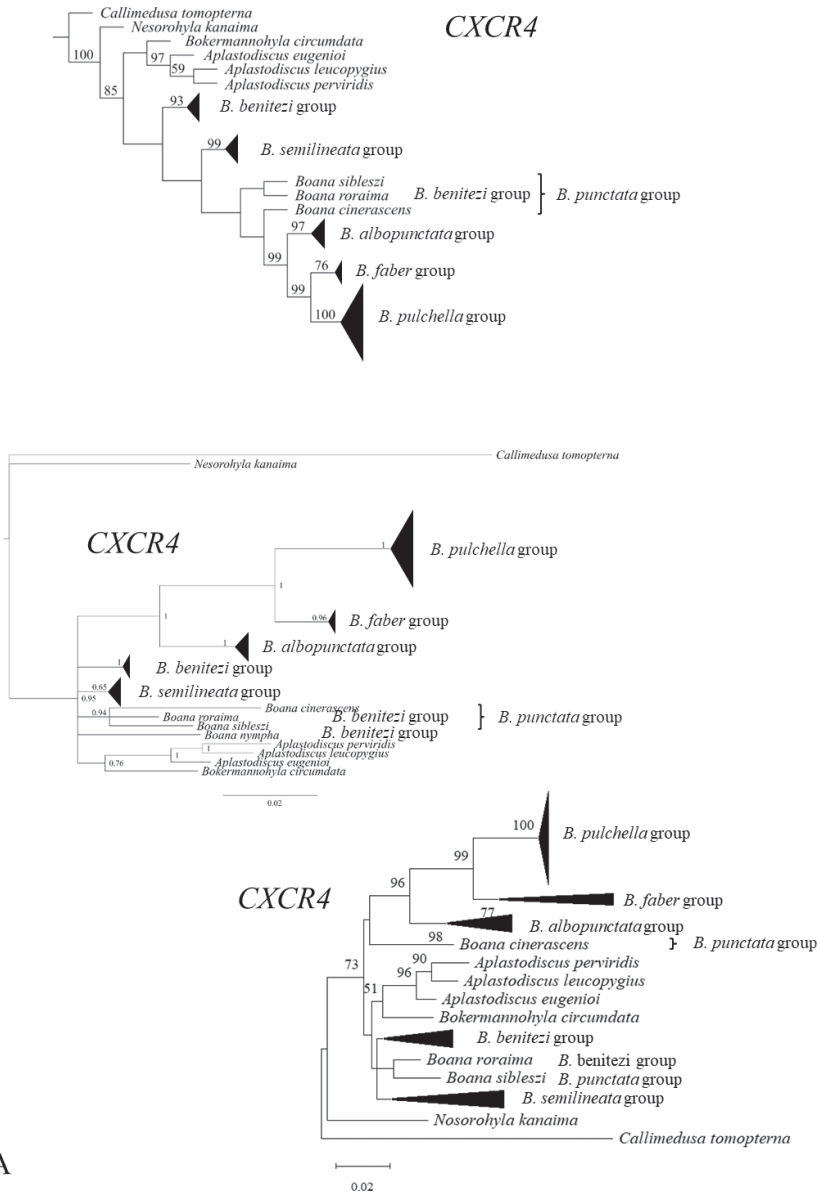
C-genes = concatenated genes. C-genes (1) = concatenated (*TYR*, *FGBI7*, *CXCR4*) S = Species number. Pb = aligned base pairs. Pb\* = Total number of sites, excluding missing data. C-S = conserved sites; S-S = singleton variable sites; P-I = parsimony-informative sites. PIS = Parsimony-informative sites excluding missing data. AT (%) = adenine-thymine frequency, CG (%) = cytosine-guanine frequency.

### Phylogenetic hypothesis

The support values of several nodes were low, ranging from 0 to 50 in all 21 trees generated by the three phylogenetic methods applied (MP, MB, and ML) (Fig. 1). Analysis of the seven nDNA markers using three different phylogenetic methods led to conflicting hypotheses about the monophyly of *Boana*. Seven groups of *Boana* were more frequently classified as monophyletic by the three methods using *TYR*, *FGBI7*, and *CXCR4*.

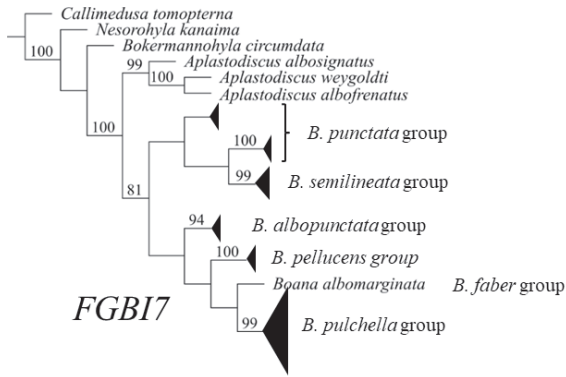
*FGBI7* suggests monophyly of *B. pellucens* group, similar to *CXCR4*, which also supports polyphyly of *B. punctata*. All groups examined were polyphyletic for 28S (Table 2).

The MP and consistency indices for all nDNAs analyzed were > 0.5. The CI and CR indices showed a similar trend for all nDNA, indicating a lower degree of homoplasies with an increase in their values (Table 3).

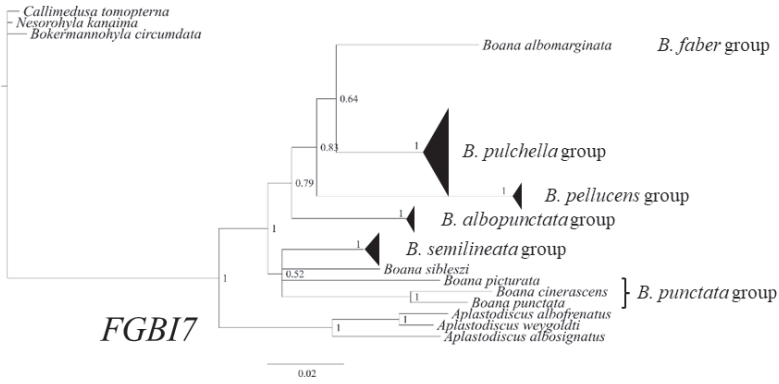


**Figure 1.** Phylogenetic trees corresponding to the studied markers provided more sensitive and highly informative performance (**A** *CXCR4* **B** *FGBI7* **C** *TYR*), and the methods used—MP, MB, and ML, corresponding to the first, second, and third trees for each marker, respectively). For Jackknife support values from the MP method, and bootstrap support values for the ML method, values below 50% were not presented.

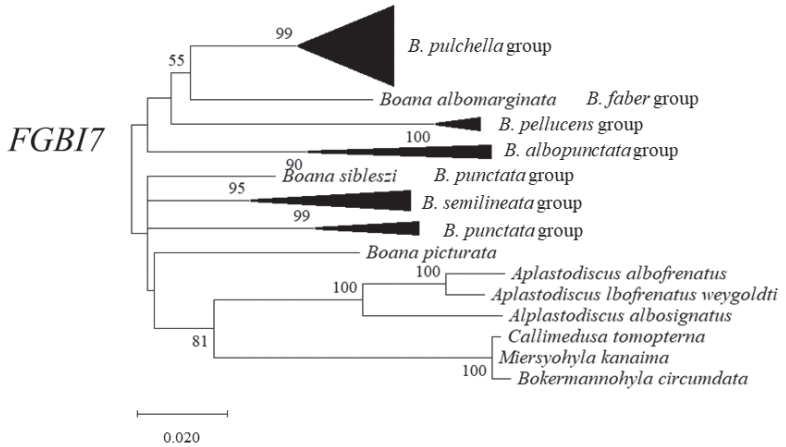




FGBI7



FGBI7



FGBI7

B

Figure 1. Continued.



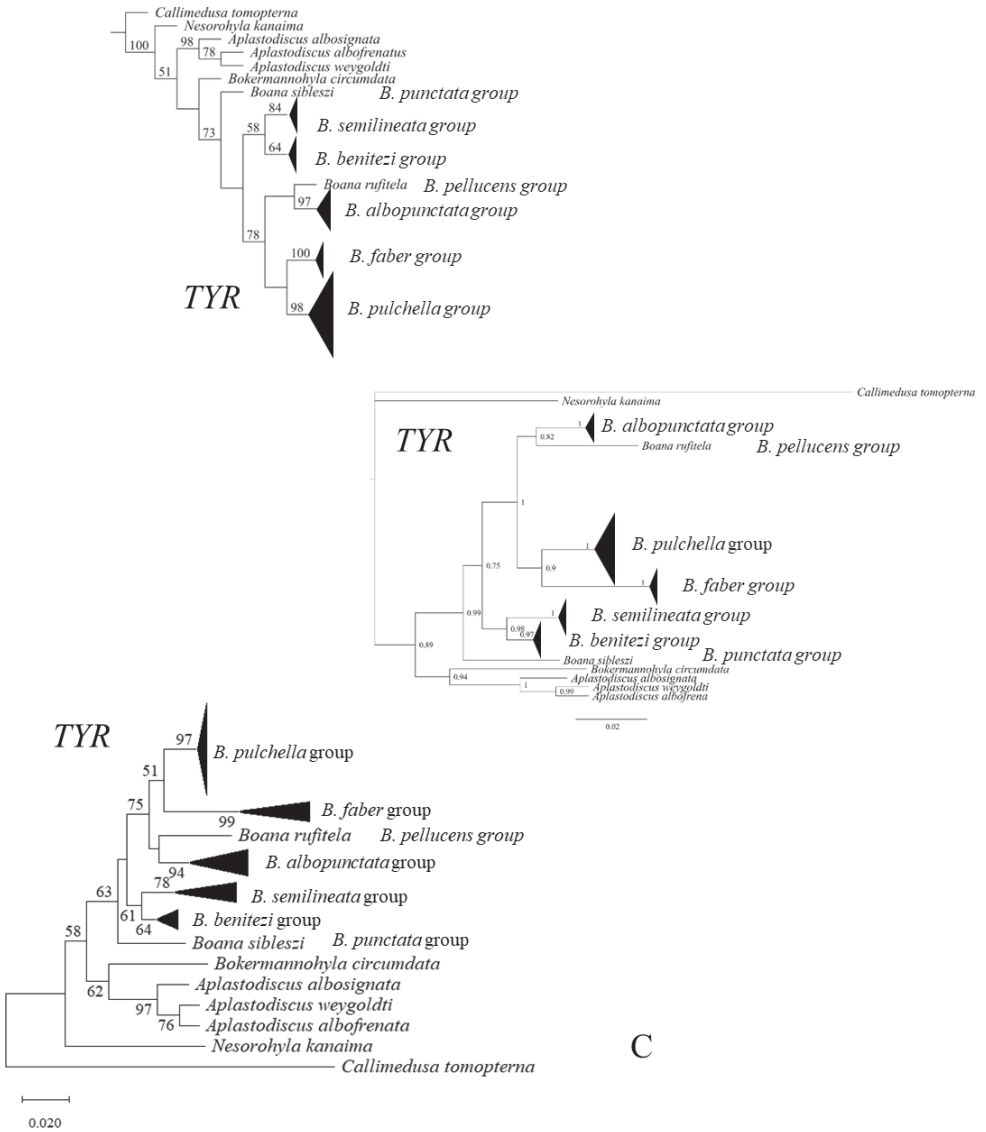


Figure 1. Continued.

**Table 2.** Monophyletic species groups recovered by the three phylogenetic methods for single and concatenated gene phylogeny.

	<i>CXCR4</i>	<i>FGBI7</i>	<i>CXCR4</i>	<i>RHO</i>	<i>SIAHI</i>	<i>TYR</i>	<i>28S</i>	<i>C-gene</i>
<i>Boana</i>	MP	MP, MB	*	*	MP, MB, ML	MP, MB, ML	*	*
<i>B. albopunctata</i> group	MP, MB, ML	MP, MB, ML	–	*	*	MP, MB, ML	*	*
<i>B. benitezi</i> group	–	–	*	*	–	MP, MB, ML	*	MP
<i>B. faber</i> group	MP, MB, ML	–	–	MP, ML	–	MP, MB, ML	*	MP, MB, ML
<i>B. pellucens</i> group	–	MP, MB, ML	–	–	–	–	–	MP, MB, ML
<i>B. pulchella</i> group	MP, MB, ML	MP, MB, ML	MP	*	MP, MB, ML	MP, MB, ML	*	*
<i>B. punctata</i> group	*	*	–	*	–	–	*	*
<i>B. semilineata</i> group	MP, MB, ML	MP, MB, ML	–	MP	–	MP, MB, ML	*	MP, MB, ML

MP: monophyletic group by maximum parsimony; MB: monophyletic group by MrBayes; ML: monophyletic by maximum likelihood; \*: polyphyletic groups identified by the three methods; -: absent groups or a single representative species.

**Table 3.** Consistency and retention indices of individual and concatenated genes.

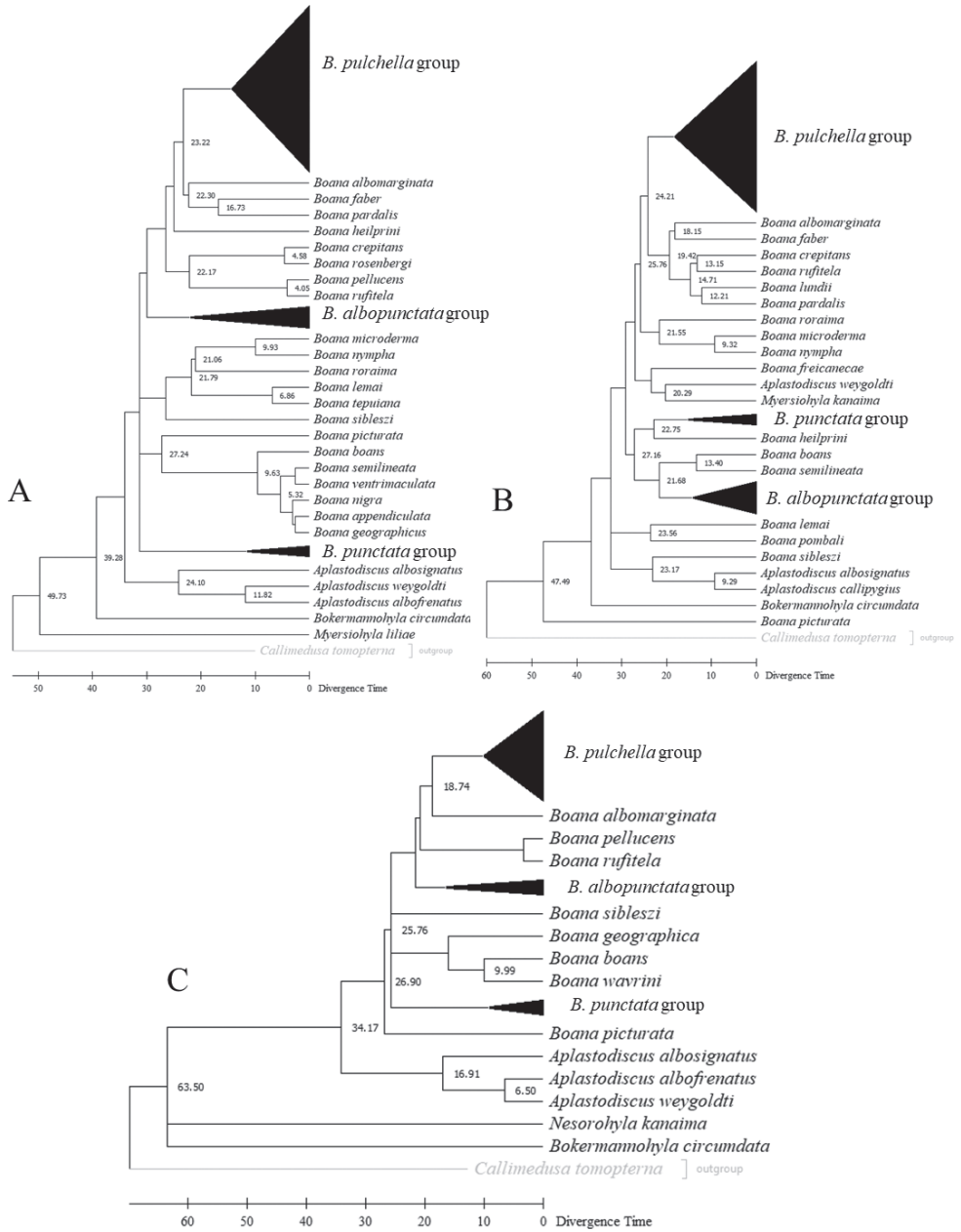
	<i>CXCR4</i>	<i>FGBI7</i>	<i>CXCR4</i>	<i>RHO</i>	<i>SIAHI</i>	<i>TYR</i>	<i>28S</i>	<i>C-genes</i>
CI	0.607	0.802	0.797	0.615	0.745	0.563	0.669	0.635
RI	0.782	0.857	0.791	0.729	0.819	0.655	0.577	0.714
CR	0.475	0.687	0.630	0.448	0.610	0.369	0.386	0.453

CI = consistency; RI = retention; CR = rescaled consistency indices

## Mean evolutionary rate

*ND1* and *CYTB* gene sequence data available for *Boana* in GenBank were obtained for 58 and 53 species, respectively. The nucleotide substitution model GTR+G+I was run with MEGA X to generate the phylogenies. The T92+G model was chosen for the phylogenetic analysis of *FGBI7*. The absolute values of the mean evolutionary rates for *ND1*, *CYTB*, and *FGBI7* were  $1.235198E^{-2} \pm 3.61903E^{-3}$ , coefficient of variation – CV = 29%;  $1.2796789E^{-2} \pm 4.6661189E^{-3}$ , CV = 36.4%; and  $1.920083E^{-3} \pm 1.07878E^{-3}$ ; CV = 56% replacement/site/million years, respectively.

Comparison of dating results between congruent *Boana* groups for *ND1*, *CYTB*, and *FGBI7* showed divergence among the three genes, with some values being most similar among mitochondrial genes. However, the results diverged to a lesser extent from those obtained for the nuclear gene *FGBI7*. The dating results for the *B. pulchella* group revealed divergence times of 14.28 Ma (*ND1*), 15.22 Ma (*CYTB*), and 10 Ma (*FGBI7*). In addition, the *B. punctata* group (*B. cinerascens* and *B. punctata*) showed dating results of 11.44 Ma (*ND1*), 15.13 Ma (*CYTB*), and 9.12 Ma (*FGBI7*), and the *B. albopunctata* group showed divergence times of 21.94 Ma (*ND1*), 13.50 Ma (*CYTB*), and 16.32 Ma (*FGBI7*) (Fig. 2).



**Figure 2.** Molecular dating of gene trees **A** *ND1* **B** *CYTB* **C** *FGFI7* using the RelTime method in MEGA X.

## Discussion

While we explored the potential applicability of *FGBI7* in reconstructing the phylogeny of *Boana* clades, our goal was to include a growing number of informative sites for future analyses, to contribute to the understanding of phylogenetic signal, and to investigate the robustness of a combination of mitochondrial and nuclear data.

Despite the short sequence (478 bp) observed in the present study, the *FGBI7*-based analyses were highly consistent with the previously proposed phylogenetic hypothesis based on the concatenation of mitochondrial and nuclear genes previously proposed for *Boana* groups (Faivovich et al. 2013, 2021; Pinheiro et al. 2019a). The phylogeny MP best agreed with these studies, showing *B. punctata* group as polyphyletic and the groups *B. semilineata* group, *B. albopunctata* group, *B. pellucens* group, *B. faber* group, and *B. pulchella* group as monophyletic.

Similar groupings were also observed among species. Some support values, such as those of *B. semilineata* group, *B. pellucens* group, and *B. pulchella* group, were very close to those determined by Pinheiro et al. (2019a).

The response of the CI and CR indices obtained by the MP analysis showed a lower degree of homoplasy for *FGBI7*. Therefore, a higher degree of parsimony compared with the congruent hypothesis generated considering the *TYR* and *CXCR4* genes and using different analysis methods supports the use of *FGBI7* in phylogenetic analysis of *Boana*.

The observed variation between the CR indices obtained for the analyzed genes can be attributed to the phylogenetic signal of indels (Miklós et al. 2004; Granados et al. 2013). Indels are a valuable source of phylogenetic information that can influence the phylogenetic outcome and have less homoplasy than nucleotides (Houde et al. 2019). The phylogenetic utility of indels may vary between individual genes; therefore, the phylogenetic weight of a single indel compared to that of a nucleotide should be explored (Pasko et al. 2011). The number, size, and distribution of indels within a sequence likely reflect the complex phenomena that lead to their accumulation over an evolutionary period and the different approaches used to analyze the available data (Houde et al. 2019).

The lowest proportion of parsimony-informative sites identified for C-genes is due to the noise of concatenation with *28S* and *RHO*. After the data for these genes were removed from the analysis (C-genes (1)), the information signal increased, although it remained lower than that of *FGBI7*. Typically, it is believed that informativeness about species history is maximized by allowing concatenation of multiple independent loci to obtain a hypothesis congruent with the species tree. However, concatenation of sequence data can bias the phylogeny if the number of gene trees that match the species tree is small. In these cases, species tree approaches can provide better-resolved phylogenies when a large number of loci are used (Edwards et al. 2007).

However, when gene tree and species tree data support a robust and congruent hypothesis (Granados et al. 2013; Ai and Kang 2015), it is possible that species trees can be resolved using only two or three few loci. These results lead to a paradigm for combining data in phylogenomics that focuses on the uniqueness of species histories and ignores the diversity of individual gene histories.

The concatenated C-gene and C-gene (1) phylogenies in MP yielded very similar clades, but the C-gene tree is not supported by bootstrap values; the C-gene (1) tree showed some high support values. The *FGBI7* tree, on the other hand, showed a larger number of bootstrap values compared to the C-gene trees (1). Tonini et al. (2015) concluded that phylogeneticists should continue to make explicit comparisons between the results of modern and classical methods.

The low reliability values obtained for multiple bootstrap and jackknife nodes and single gene trees, such as the concatenated alignment of the seven genes, indicate low robustness of the estimated topology. The low bootstrap values could be due to the small sample size and the generation of bias by signals generated by a few genes. Bootstrap values and similar support values increase with increasing numbers of sites sampled (Phillips et al. 2004).

Congruence was observed not only at the tips of trees but also at deeper inner branches. Chen et al. (2003) proposed a reliable alternative strategy in which only one bootstrap value is considered as the threshold for clade significance. In this alternative strategy, the same clade repeatedly derived from different data sets is accepted even at low bootstrap values, rather than a strongly supported clade derived from a single data set. Congruence analysis reveals different evolutionary signals in the underlying collection of genes and allows for a more conservative interpretation of phylogenomic signals (Thiergart et al. 2014). The use of *FGBI7* proved to be a complementary technique for resolving the *Boana* phylogeny. By confirming specific clades within the *Boana* phylogeny, the use of integrated traits may be better suited to elucidate the history of a clade (Salichos and Rokas 2013).

The congruence between the topology resulting from the use of *FGBI7* in this study and the results reported by Pinheiro et al. (2019a) and Faivovich et al. (2021) may be due to the design of a specific primer for *FGBI7* analysis. Other studies have also shown satisfactory results with the use of *FGBI7*-specific primers for different study groups (Sequeira et al. 2006; Teixeira et al. 2015). Designing PCR primers to screen primers against a user-selected database avoids nonspecific amplification and highlights a variable sequence of the marker to establish relationships. Although the design of specific primers is time consuming (Small et al. 2004), it has significant advantages over universal primers, particularly in terms of gene amplification, sequence quality and variation, and searching for a phylogenetic signal (Cai and Ma 2016).

Intraspecific variability in body color, description of new species, and research on declining taxa of the Hylidae (AmphibiaWeb 2021; IUCN 2021) are challenges for future studies that should be addressed using integrative trait taxonomy (Hillis 2019; Pinheiro et al. 2019b). Despite the short sequence observed in the *FGBI7*-based analysis, this is a versatile gene that can be used to address a variety of phylogenetic and taxonomic questions. The elucidation of taxa thought to be geographically widespread that are in fact cryptic species, such as *Boana* (Estupiñán et al. 2016; Fouquet et al. 2016; Caminer et al. 2017; Orrico et al. 2017; Cryer et al. 2019), and the agreement with previously proposed phylogenetic hypotheses supported by the informative sites for parsimony demonstrate the high performance of *FGBI7*.

This study also showed that *FGBI7* for *Boana* has lower mean evolutionary rates than mitochondrial genes (*ND1* and *CYTB*). The substitution rates in this study are consistent with previous reports in which nuclear genes typically had lower substitu-

tion rates than mitochondrial genes (Zheng et al. 2011; Near et al. 2012; Stöck et al. 2012). The mtDNA and nDNA evolution rates in this study were similar to those estimated by Ehl et al. (2019). These authors estimated evolution rates from  $E^{-2}$  to  $E^{-3}$  for mtDNA and from  $E^{-3}$  to  $E^{-4}$  for nDNA. However, the amplitude of evolutionary rates was lower for *FGBI7* compared with mtDNA.

The divergence dates of the *FGBI7* data were close to those obtained by Fouquet et al. (2021) for *B. punctata* group (*B. cinerascens* + *B. punctata*) ( $\bar{x} = 9.66 \pm 0.76$  Ma) and *B. albopunctata* ( $\bar{x} = 16.8 \pm 0.70$  Ma). Divergence times for *B. fasciata* were determined by Duellman et al. (2016), Feng et al. (2017), and Fouquet et al. (2021). Although Feng et al. (2017) criticized the geological dating method used by Duellman et al. (2016) and instead calibrated their dating data with fossil records, their results differed significantly from those of Fouquet et al. (2021), who used the same calibration method. Duellman et al. (2016) and Fouquet et al. (2021) found mean divergence times of  $4.71 \pm 1.06$  Ma for *B. fasciata*, while those for *CYTB* were overestimated by 13.22 Ma.

Assuming that the divergence threshold for *Neobatrachus* from Gondwana is 145 Ma and that for Hylidae is 70 Ma, and based on nDNA data and calibration of the fossil record, the origin of *Boana* is estimated to be 25 Ma (Feng et al. 2017). Using a threshold of 62 Ma and based on nDNA and mtDNA data, Duellman et al. (2016) estimated the origin of *Boana* to be 34 Ma, with a mean diversification rate within their groups of  $19.1 \pm 4.6$  Ma. This estimate is close to the divergence time calculated by Fouquet et al. (2021) for *B. albopunctata* (17.3 Ma) and by *FGBI7* in the present study.

Recent divergence times inferred from mtDNA sequences tend to overestimate times for basal clades (Maddin et al. 2012). On the other hand, estimates of divergence times for more recent nodes based on nuclear loci are inaccurate because significantly fewer mutations have accumulated between comparatively young lineages (Wilke et al. 2009). Another way to address this divergence is to compare these results with additional evidence. The considerable amplitude between the appearance of *Boana* is estimated to be 30 Ma and the onset of divergence of the Amazonian clade of *B. albopunctata* group is estimated to be 10 Ma. This limits our understanding of divergence times using only a single type of molecular marker. We propose that *FGBI7* should be used for anuran clades that originated between 30 and 70 Ma, while mtDNA should be used for clades that originated between 25 and 30 Ma and diverged until recently ( $< 2$  Ma). Thus, it is possible to construct an nDNA-based time tree for a reduced set of taxa representing all genera, reconstruct different lineage-level time trees using mtDNA data, and compare the performance of the different approaches (Ehl et al. 2019).

The use of *FGBI7* in this study showed that, unlike other nuclear genes already used to generate phylogenetic hypotheses of Anura (e.g.: Wiens et al. 2010; Pyron and Wiens 2011; Duellman et al. 2016) or in the phylogenies of *Boana* and some of their groups (Faivovich et al. 2013, 2021; Caminer and Ron 2014; Pinheiro et al. 2019a; Lyra et al. 2020), has great potential to reveal relationships between lineages of very close clades.

The topology, total informative sites, and parsimony sites of *FGBI7*, in combination with mitochondrial genes, allow the clarification of new lineages already proposed by other authors such as Fouquet et al. (2021), Vasconcellos et al. (2021), and Rainha et al. (2021), contributing to future studies on *Boana* evolution and systematics.

Although estimating divergence times for clades is a difficult task (Mello 2018), the approach proposed in this study estimated the average evolutionary rate for *Boana* using two mitochondrial genes and *FGBI7*. Therefore, we recommend the use of *FGBI7* for the analysis of clades such as *Boana* with temporal ranges between 30 and 70 Ma and the use of the mtDNA genes for lineages with thresholds from the origin of *Boana*, between 25 and 30 Ma, to recent times (< 2 Ma).

## Acknowledgements

We extend our gratitude to researchers for sample donations, to Maria Silvanira R. Barbosa for her assistance with laboratory procedures, to Daniel Fernandes Vilar Cardoso from CIMIR-RE at the Federal Institute of Paraíba for providing appropriate hardware for analysis, and to Beatriz Mello from Genetics Department – Federal University of Rio de Janeiro, for her assistance in the calculation of mean evolutionary rates and molecular dating using the RelTime method in MEGA X. We would also like to thank the Brazilian Environment Ministry, which financed the MMA/PROBIO-Brazil project “Diversity of vertebrates on the upper Marmelos River (BX 044)” and CAPES for providing a graduate RAET stipend. Collection licenses: 301 062/2003-CGFAU/LIC issued by the Brazilian Institute for the Environment and Renewable 302 Natural Resources (IBAMA).

## References

- Ai B, Kang M (2015) How Many Genes are Needed to Resolve Phylogenetic Incongruence?. *Evolutionary Bioinformatics* 11(1): 185–188. <https://doi.org/10.4137/EBO.S26047>
- AmphibiaWeb (2021) University of California, Berkeley, CA, USA. <https://amphibiaweb.org>
- Ballard JWO, Whitlock MC (2004) The incomplete natural history of mitochondria. *Molecular Ecology* 13(4): 729–744. <https://doi.org/10.1046/j.1365-294X.2003.02063.x>
- Berneck BVM, Haddad CFB, Lyra ML, Cruz CAG, Faivovich J (2016) The green clade grows: a phylogenetic analysis of *Aplastodiscus* (Anura: Hylidae). *Molecular Phylogenetics and Evolution* 97: 213–223. <https://doi.org/10.1016/j.ympev.2015.11.014>
- Brunes TO, Sequeira F, Haddad CFB, Alexandrino J (2010) Gene and species trees of a Neotropical group of treefrogs: Genetic diversification in the Brazilian Atlantic Forest and the origin of a polyploid species. *Molecular Phylogenetics and Evolution* 57(3): 1120–1133. <https://doi.org/10.1016/j.ympev.2010.08.026>
- Brunes TO, Alexandrino J, Baêta D, Zina J, Haddad CFB, Sequeira F (2014) Species limits, phylogeographic and hybridization patterns in Neotropical leaf frogs (Phyllomedusinae). *Zoologica Scripta* 43(6): 586–604. <https://doi.org/10.1111/zsc.12079>
- Cai L, Ma H, (2016) Using nuclear genes to reconstruct angiosperm phylogeny at the species level: A case study with Brassicaceae species. *Journal of Systematics and Evolution* 54(4): 438–452. <https://doi.org/10.1111/jse.12204>



- Caminer MA, Ron S (2014) Systematics of treefrogs of the *H. calcaratus* and *H. fasciatus* species complex (Anura, Hylidae) with the description of four new species. *ZooKeys* 370: 1–68. <https://doi.org/10.3897/zookeys.370.6291>
- Caminer MA, Ron SR (2020) Systematics of the *Boana semilineata* species group (Anura: Hylidae), with description of two new species from Amazonian Ecuador. *Zoological Journal of the Linnean Society* 190(1): 149–180. <https://doi.org/10.1093/zoolinnean/zlaa002>
- Caminer MA, Milá B, Jansen M, Fouquet A, Venegas PJ, Chávez G, Loughheed SC, Ron SR (2017) Systematics of the *Dendropsophus leucophyllatus* species complex (Anura: Hylidae): Cryptic diversity and the description of two new species. *PLoS ONE* 12(4): e0176902. <https://doi.org/10.1371/journal.pone.0176902>
- Chen WJ, Bonillo C, Lecointre G (2003) Repeatability of clades as a criterion of reliability: A case study for molecular phylogeny of Acanthomorpha (Teleostei) with larger number of taxa. *Molecular Phylogenetics and Evolution* 26(2): 262–288. [https://doi.org/10.1016/S1055-7903\(02\)00371-8](https://doi.org/10.1016/S1055-7903(02)00371-8)
- Chen MY, Liang D, Zhang P (2017) Phylogenomic resolution of the phylogeny of laurasiatherian mammals: Exploring phylogenetic signals within coding and noncoding sequences. *Genome Biology and Evolution* 9(8): 1998–2012. <https://doi.org/10.1093/gbe/evx147>
- Cryer J, Wynne F, Price SJ, Puschendorf R (2019) Cryptic diversity in *Lithobates warszewitschii* (Amphibia, Anura, Ranidae). *ZooKeys* 838: 49–69. <https://doi.org/10.3897/zookeys.838.29635>
- Duellman WE, Marion AB, Hedges SB (2016) Phylogenetics, classification, and biogeography of the treefrogs (Amphibia: Anura: Arboranae). *Zootaxa* 4104(4): 1–109. <https://doi.org/10.11646/zootaxa.4104.1.1>
- Edwards SV, Liu L, Pearl DK (2007) High-resolution species trees without concatenation. *Proceedings of the National Academy of Sciences of the United States of America* 104(14): 5936–5941. <https://doi.org/10.1073/pnas.0607004104>
- Ehl S, Vences M, Veitha M (2019) Reconstructing evolution at the community level: A case study on Mediterranean amphibians. *Molecular Phylogenetics and Evolution* 134: 211–225. <https://doi.org/10.1016/j.ympev.2019.02.013>
- Estupiñán RA, Ferrari SF, Gonçalves EC, Barbosa MSR, Vallinoto M, Schneider MPC (2016) Evaluating the diversity of Neotropical anurans using DNA barcodes. *ZooKeys* 637: 89–106. <https://doi.org/10.3897/zookeys.637.8637>
- Faivovich J, Haddad CFB, Garcia PCA, Frost DR, Campbell JA, Wheeler WC (2005) Systematic review of the frog family Hylidae with special reference to Hylinae: Phylogenetic analysis and taxonomic revision. *Bulletin of the American Museum of Natural History* 294(1): 1–240. [https://doi.org/10.1206/0003-0090\(2005\)294\[0001:SROTFF\]2.0.CO;2](https://doi.org/10.1206/0003-0090(2005)294[0001:SROTFF]2.0.CO;2)
- Faivovich J, Haddad CFB, Baeta D, Jungfer KH, Alvares GFR, Brandao RA, Sheil C, Barrientos LS, Barrio-Amoros CL, Cruz CAG, Wheeler WC (2010) The phylogenetic relationships of the charismatic poster frogs, Phyllomedusinae (Anura, Hylidae). *Cladistics* 26(3): 227–261. <https://doi.org/10.1111/j.1096-0031.2009.00287.x>
- Faivovich J, McDiarmid RW, Myers CW (2013) Two new species of *Myersiophyla* (Anura: Hylidae) from Cerro de la Neblina, Venezuela, with comments on other species of the genus. *American Museum Novitates* 3792(3792): 1–63. <https://doi.org/10.1206/3792.1>
- Faivovich J, Pinheiro PDP, Lyra ML, Pereyra MO, Baldo D, Muñoz A, Reichle S, Brandão RA, Giarretta AA, Thomé MTC, Chaparro JC, Baêta D, Widholzer RL, Baldo J, Lehr E,

- Wheeler WC, Garcia PCA, Haddad CFB (2021) Phylogenetic relationships of the *Boana pulchella* group (Anura: Hylidae). *Molecular Phylogenetics and Evolution* 155: 1–18. <https://doi.org/10.1016/j.ympev.2020.106981>
- Farris JS, Albert VA, Kallersjo AM, Lipscomb D, Kluge AG (1996) Parsimony jackknifing outperforms neighbour joining. *Cladistics* 12(2): 99–124. <https://doi.org/10.1111/j.1096-0031.1996.tb00196.x>
- Feng YJ, Blackburn DC, Lianga D, Hillis DM, Waked DB, Cannatella DC, Zhang P (2017) Phylogenomics reveals rapid, simultaneous diversification of three major clades of Gondwanan frogs at the Cretaceous–Paleogene boundary. *Proceedings of the National Academy of Sciences of the United States of America* 114(29): E5864–E5870. <https://doi.org/10.1073/pnas.1704632114>
- Ferro JM, Cardozo DE, Suárez P, Boeris JM, Blasco Zúñiga A, Barbero G, Gomes A, Gazoni T, Costa W, Nagamachi CY, Rivera M, Parise-Maltempi PP, Wiley JE, Pieczarka JC, Haddad CFB, Faivovich J, Baldo D (2018) Chromosome evolution in Cophomantini (Amphibia, Anura, Hylinae). *PLoS ONE* 13(2): e0192861. <https://doi.org/10.1371/journal.pone.0192861>
- Folk RA, Mandel JR, Freudenstein JV (2015) A protocol for targeted enrichment of intron-containing sequence markers for recent radiations: A phylogenomic example from *Heuchera* (Saxifragaceae). *Applications in Plant Sciences* 3(8): 1500039. <https://doi.org/10.3732/apps.1500039>
- Fouquet A, Martínez Q, Zeidler L, Courtois EA, Gaucher P, Blanc M, Lima JD, Souza SM, Rodrigues MT, Kok PJR (2016) Cryptic diversity in the *Hypsiboas semilineatus* species group (Amphibia, Anura) with the description of a new species from the eastern Guiana Shield. *Zootaxa* 4084(1): 079–104. <https://doi.org/10.11646/zootaxa.4084.1.3>
- Fouquet A, Marinho P, Réjaud A, Carvalho TR, Caminer MA, Jansen M, Rainha RN, Rodrigues MT, Werneck FP, Lima AP, Hrbek T, Giaretta AA, Venegas PJ, Chávez G, Ron S (2021) Systematics and biogeography of the *Boana albopunctata* species group (Anura, Hylidae), with the description of two new species from Amazonia. *Systematics and Biodiversity* 0(4): 1–38. <https://doi.org/10.1080/14772000.2021.1873869>
- Frost DR (2023) *Amphibian Species of the World: an Online Reference*. Version 6.1. American Museum of Natural History, New York, USA. <https://amphibiansoftheworld.amnh.org/index.php>
- Goloboff P, Catalano S (2016) TNT version 1.5, with a full implementation of phylogenetic morphometrics. *Cladistics* 32(3): 221–238. <https://doi.org/10.1111/cla.12160>
- Gonçalves H, Martínez Solano I, Ferrand N, García-París M (2007) Conflicting phylogenetic signal of nuclear vs mitochondrial DNA markers in midwife toads (Anura, Discoglossidae, *Alytes*) deep coalescence or ancestral hybridization? *Molecular Phylogenetics and Evolution* 44(1): 494–500. <https://doi.org/10.1016/j.ympev.2007.03.001>
- Granados MC, Wanke S, Salomo K, Goetghebeur P, Samain MS (2013) Application of the phylogenetic informativeness method to chloroplast markers: A test case of closely related species in tribe Hydrangeae (Hydrangeaceae). *Molecular Phylogenetics and Evolution* 66(1): 233–242. <https://doi.org/10.1016/j.ympev.2012.09.029>
- Hall TA (1999) BioEdit: A user-friendly biological sequence alignment editor and analysis program for Windows 95/98/NT. *Nucleic Acids Symposium Series* 41: 95–98.
- Hillis MD (2019) Species delimitation in herpetology. *Journal of Herpetology* 53(1): 3–12. <https://doi.org/10.1670/18-123>

- Houde P, Braun EL, Narula N, Minjares U, Mirarab S (2019) Phylogenetic signal of indels and the Neoavian radiation. *Diversity* 11(7): e108. [23 pp] <https://doi.org/10.3390/d11070108>
- Hughes AL, Yeager M (1997) Coordinated amino acid changes in the evolution of mammalian defensins. *Journal of Molecular Evolution* 44(6): 675–682. <https://doi.org/10.1007/PL00006191>
- Igea J, Juste J, Castresana J (2010) Novel intron markers to study the phylogeny of 697 closely related mammalian species. *BMC Ecology and Evolution* 10: e369. <https://doi.org/10.1186/1471-2148-10-369>
- IUCN (2021) The IUCN Red List of Threatened Species. Version 2021-1. <https://www.iucn-redlist.org>
- Johnson, KP, Clayton DH (2000) Nuclear and mitochondrial genes contain similar phylogenetic signal for pigeons and doves (Aves: Columbiformes). *Molecular Phylogenetics and Evolution* 14(1):141–151. <https://doi.org/10.1006/mpev.1999.0682>
- Katoh K, Standley DM (2013) MAFFT multiple sequence alignment software 4 version 7: Improvements in performance and usability. *Molecular Biology and Evolution* 30(4): 772–780. <https://doi.org/10.1093/molbev/mst010>
- Kumar S, Stecher G, Li M, Knyaz C, Tamura K (2018) MEGA X: Molecular Evolutionary Genetics Analysis across computing platforms. *Molecular Biology and Evolution* 35(6): 1547–1549. <https://doi.org/10.1093/molbev/msy096>
- Li WH (1997) *Molecular Evolution*. Sinauer Associates, Sunderland, Massachusetts, 457 pp.
- Lourenço LB, Targueta CP, Baldo D, Nascimento J, Garcia PCA, Andrade GV, Haddad CFB, Recco-Pimentel SM (2015) Phylogeny of frogs from the genus *Physalaemus* (Anura, Leptodactylidae) inferred from mitochondrial and nuclear gene sequences. *Molecular Phylogenetics and Evolution* 92: 204–216. <https://doi.org/10.1016/j.ympev.2015.06.011>
- Lyra ML, Lourenço AC, Pinheiro PDP, Pezutti TL, Baeta D, Barlow A, Hofreiter M, Pombal Jr JP, Haddad CFB, Faivovich J (2020) High throughput DNA sequencing of museum specimens sheds light on the long missing species of the *Bokermannohyla claresignata* group (Anura: Hylidae: Cophomantini). *Zoological Journal of the Linnean Society* 190(4): 1235–1255. <https://doi.org/10.1093/zoolinnean/zlaa033>
- Maddin HC, Russell AP, Anderson JS (2012) Phylogenetic implications of the morphology of the braincase of caecilian amphibians (Gymnophiona). *Zoological Journal of the Linnean Society* 166(1): 160–201. <https://doi.org/10.1111/j.1096-3642.2012.00838.x>
- Maia-Carvalho BM, Gonçalves H, Ferrand N, Solano IM (2014) Multilocus assessment of phylogenetic relationships in *Alytes* (Anura, Alytidae). *Molecular Phylogenetics and Evolution* 79: 270–278. <https://doi.org/10.1016/j.ympev.2014.05.033>
- Mello B (2018) Estimating TimeTrees with MEGA and the TimeTree Resource. *Molecular Phylogenetics and Evolution* 35(9): 2334–2342. <https://doi.org/10.1093/molbev/msy133>
- Mello B, Tao Q, Tamura K, Kumar S (2017) Fast and Accurate Estimates of Divergence Times from Big Data. *Molecular Phylogenetics and Evolution* 34(1): 45–50. <https://doi.org/10.1093/molbev/msw247>
- Menezes L, Canedo C, Batalha-Filho H, Garda AA, Gehara M, Napoli MF (2016) Multilocus Phylogeography of the Treefrog *Scinax eurydice* (Anura, Hylidae) Reveals a Plio-Pleistocene Diversification in the Atlantic Forest. *PLoS ONE* 11(6): e0154626. <https://doi.org/10.1371/journal.pone.0154626>

- Menezes L, Batalha-Filho H, Garda AA, Napoli MF (2020) Tiny treefrogs in the Pleistocene: Phylogeography of *Dendropsophus oliveirai* in the Atlantic Forest and associated enclaves in northeastern Brazil. *Journal of Zoological Systematics and Evolutionary Research* 59(1): 179–194. <https://doi.org/10.1111/jzs.12422>
- Miklós I, Lunter GA, Holmes I (2004) A “Long Indel” model for evolutionary sequence alignment. *Molecular Biology and Evolution* 21(3): 529–540. <https://doi.org/10.1093/molbev/msh043>
- Nabholz B, Glémin S, Galtier N (2008) Strong variations of mitochondrial mutation rate across mammals – the longevity hypothesis. *Molecular Biology and Evolution* 25(1): 120–130. <https://doi.org/10.1093/molbev/msm248>
- Nabholz B, Glémin S, Galtier N (2009) The erratic mitochondrial clock: Variations of mutation rate, not population size, affect mtDNA diversity across mammals and birds. *BMC Evolutionary Biology* 9(54): 1–13. <https://doi.org/10.1186/1471-2148-9-54>
- Near TJ, Eytan RI, Dornburg A, Kuhn KL, Moore JA, Davis MP, Wainwright PC, Friedman M, Smith WL (2012) Resolution of ray-finned fish phylogeny and timing of diversification. *Proceedings of the National Academy of Sciences of the United States of America* 109(34): 13698–13703. <https://doi.org/10.1073/pnas.1206625109>
- Orrico VGD, Nunes I, Mattedi C, Fouquet A, Lemos AW, Rivera–Correa M, Lyra ML, Loebmann D, Pimenta BVS, Caramaschi U, Rodrigues MT, Haddad CFB (2017) Integrative taxonomy supports the existence of two distinct species within *Hypsiboas crepitans* (Anura: Hylidae). *Salamandra* 53: 99–113. <http://www.salamandra-journal.com/>
- Pasko L, Ericson PGP, Elzanowski A (2011) Phylogenetic utility and evolution of indels: A study in neognathous birds. *Molecular Phylogenetics and Evolution* 61(3): 760–771. <https://doi.org/10.1016/j.ympev.2011.07.021>
- Peloso PLV, Oliveira RMD, Sturaro MJ, Rodrigues MT, Lima-Filho GR, Bitar YOC, Wheeler WC, Aleixo A (2018) Phylogeny of Map Tree Frogs, *Boana semilineata* species group, with a new Amazonian species (Anura: Hylidae). *South American Journal of Herpetology* 13(2): 150–169. <https://doi.org/10.2994/SAJH-D-17-00037.1>
- Pereyra MO, Blotto BL, Baldo D, Chaparro JC, Ron SR, Elias-Costa AJ, Iglesias PP, Venegas PJ, Thomé MTC, Ospina-Sarria JJ, Maciel NM, Rada M, Kolenc F, Borteiro C, Rivera-Correa M, Rojas-Runjaic FJM, Moravec J, De La Riva I, Wheeler WC, Castroviejo-Fisher S, Grant T, Haddad CFB, Faivovich J (2021) Evolution in the Genus *Rhinella*: A Total Evidence Phylogenetic Analysis of Neotropical True Toads (Anura: Bufonidae). *Bulletin of the American Museum of Natural History* 447(1): 1–156. <https://doi.org/10.1206/0003-0090.447.1.1>
- Phillips MJ, Delsuc F, Penny D (2004) Genome-scale phylogeny and the detection of systematic biases. *Molecular Phylogenetics and Evolution* 21(7): 1455–1458. <https://doi.org/10.1093/molbev/msh137>
- Pinheiro PP, Kok PJR, Noonan BPD, Means B, Haddad CFB, Faivovich J (2019a) A new genus of Cophomantini, with comments on the taxonomic status of *Boana liliae* (Anura: Hylidae). *Zoological Journal of the Linnean Society* 185(1): 226–245. <https://doi.org/10.1093/zoolinnean/zly030>
- Pinheiro HT, Moreau CS, Daly M, Rocha LA (2019b) Will DNA barcoding meet taxonomic needs? *Science* 365(6456): 873–874. <https://doi.org/10.1126/science.aay7174>

- Posada D, Buckley TR (2004) Model selection and model averaging in phylogenetics: Advantages of Akaike information criterion and Bayesian approaches over likelihood ratio tests. *Systematic Biology* 53(5): 793–808. <https://doi.org/10.1080/10635150490522304>
- Prado CPA, Haddad CFB, Zamudio KR (2012) Cryptic lineages and Pleistocene population expansion in a Brazilian Cerrado frog. *Molecular Ecology* 21(4): 921–941. <https://doi.org/10.1111/j.1365-294X.2011.05409.x>
- Prychitko TM, Moore WS (1997) The utility of DNA sequences of an intron from the b-fibrinogen gene in phylogenetic analysis of woodpeckers (Aves: Picidae). *Molecular Phylogenetics and Evolution* 8(2): 193–204. <https://doi.org/10.1006/mpev.1997.0420>
- Prychitko TM, Moore WS (2000) Comparative evolution of the mitochondrial cytochrome b gene and nuclear  $\beta$ -fibrinogen intron 7 in woodpeckers. *Molecular Phylogenetics and Evolution* 17(7): 1101–1111. <https://doi.org/10.1093/oxfordjournals.molbev.a026391>
- Prychitko TM, Moore WS (2003) Alignment and phylogenetic analysis of  $\beta$ -fibrinogen intron 7 sequences among avian orders reveal conserved regions within the intron. *Molecular Biology and Evolution* 20(5): 762–771. <https://doi.org/10.1093/molbev/msg080>
- Pyron RA, Wiens JJ (2011) A large-scale phylogeny of Amphibia including over 2800 species, and a revised classification of extant frogs, salamanders, and caecilians. *Molecular Phylogenetics and Evolution* 61(2): 543–583. <https://doi.org/10.1016/j.ympev.2011.06.012>
- Rainha RN, Martinez PA, Moraes LJCL, Castro KMSA, Réjaud A, Fouquet A, Leite RN, Rodrigues MT, Werneck FP (2021) Subtle environmental variation affects phenotypic differentiation of shallow divergent treefrog lineages in Amazonia. *Biological Journal of the Linnean Society* 134(1): 177–197. <https://doi.org/10.1093/biolinnean/blab056>
- Rambaut A (2016) FigTree, tree figure drawing tool. Available from Version 1 (4) 3. <http://tree.bio.ed.ac.uk/software/figtree>
- Rambaut A, Drummond AJ, Xie D, Baele G, Suchard MA (2018) Posterior summarization in Bayesian phylogenetics using Tracer 1.7. *Systematic Biology* 67(5): 901–904. <https://doi.org/10.1093/sysbio/syy032>
- Roberts LR, Nichols LA, Holland LJ (1995) cDNA and amino-acid sequences and organization of the gene encoding the BI3 subunit of fibrinogen from *Xenopus laevis*. *Gene* 160(2): 223–228. [https://doi.org/10.1016/0378-1119\(95\)00188-C](https://doi.org/10.1016/0378-1119(95)00188-C)
- Ronquist F, Teslenko M, van der Mark P, Ayres DL, Darling A, Höhna S, Larget B, Liu L, Suchard MA, Huelsenbeck JP (2012) MrBayes 3.2: Efficient Bayesian phylogenetic inference and model choice across a large model space. *Systematic Biology* 61(3): 539–542. <https://doi.org/10.1093/sysbio/sys029>
- Rubinoff D, Holland BS (2005) Between Two Extremes: Mitochondrial DNA is neither the Panacea nor the Nemesis of Phylogenetic and Taxonomic Inference. *Systematic Biology* 54(6): 952–961. <https://doi.org/10.1080/10635150500234674>
- Salichos L, Rokas A (2013) Inferring ancient divergences requires genes with strong phylogenetic signals. *Nature* 497(7449): 327–331. <https://doi.org/10.1038/nature12130>
- Sambrook JF, Russell DW (2001) *Molecular cloning: a laboratory manual*. Cold Spring Harbor Laboratory Press, New York, 2344 pp.
- Schmitz U, Pinello N, Jia F, Alasmari S, Ritchie W, Keightley MC, Shini S, Lieschke GJ, Wong JLL, Rasko JEJ (2017) Intron retention enhances gene regulatory complexity in vertebrates. *Genome Biology* 18(216): 1–15. <https://doi.org/10.1186/s13059-017-1339-3>



- Sequeira F, Ferrand N, Harris DJ (2006) Assessing the phylogenetic signal of the nuclear beta-fibrinogen intron 7 in salamandrids (Amphibia: Salamandridae). *Amphibia-Reptilia* 27(3): 409–418. <https://doi.org/10.1163/156853806778190114>
- Small RL, Cronn RC, Wendel JF (2004) Use of nuclear genes for phylogeny reconstruction in plants. *Australian Systematic Botany* 17(2): 145–170. <https://doi.org/10.1071/SB03015>
- Stöck M, Dufresnes CS, Litvinchuk N, Lymberakis P, Biollay S, Berroneau M, Borzée A, Ghali K, Ogielska M, Perrin N (2012) Cryptic diversity among Western Palearctic tree frogs: Postglacial range expansion, range limits, and secondary contacts of three European tree frog lineages (*Hyla arborea* group). *Molecular Phylogenetics and Evolution* 65(1): 1–9. <https://doi.org/10.1016/j.ympev.2012.05.014>
- Tamura K, Peterson D, Peterson N, Stecher G, Nei M, Kumar S (2011) Mega 5: Molecular evolutionary genetics analysis using maximum likelihood, evolutionary distance, and maximum parsimony methods. *Molecular Biology and Evolution* 28(10): 2731–2739. <https://doi.org/10.1093/molbev/msr121>
- Tamura K, Tao Q, Kumar S (2018) Theoretical Foundation of the RelTime Method for Estimating Divergence Times from Variable Evolutionary Rates. *Molecular Phylogenetics and Evolution* 35(7): 1770–1782. <https://doi.org/10.1093/molbev/msy044>
- Teixeira JI, Martínez-Solano D, Buckley P, Tarroso M, García-París M, Ferrand N (2015) Genealogy of the nuclear  $\beta$ -fibrinogen intron 7 in *Lissotriton boscai* (Caudata, Salamandridae) concordance with mtDNA and implications for phylogeography and speciation. *Contributions to Zoology* 84(3): 193–215. <https://doi.org/10.1163/18759866-08403002>
- Thiery T, Landan G, Martin WF (2014) Concatenated alignments and the case of the disappearing tree. *BMC Ecology and Evolution* 14: e266. <https://doi.org/10.1186/s12862-014-0266-0>
- Tonini J, Moore A, Stern D, Shcheglovitova M, Ortí G (2015) Concatenation and Species Tree Methods Exhibit Statistically indistinguishable Accuracy under a Range of Simulated Conditions Version 1. *PLoS Currents* 9: 7. <https://doi.org/10.1371%2Fcurrents.tol.34260cc27551a527b124ec5f6334b6be>
- Vaidya G, Lohman DJ, Meier R (2011) SequenceMatrix: Concatenation software for the fast assembly of multigene datasets with character set and codon information. *Cladistics* 27(2): 171–180. <https://doi.org/10.1111/j.1096-0031.2010.00329.x>
- Vasconcellos MM, Colli GR, Cannatella DC (2021) Paleotemperatures and recurrent habitat shifts drive diversification of treefrogs across distinct biodiversity hotspots in sub-Amazonian South America. *Journal of Biogeography* 48(2): 305–320. <https://doi.org/10.1111/jbi.13997>
- Velo-Antón G, Martínez-Solano I, García-París M (2008)  $\beta$  fibrinogen intron 7 variation in *Discoglossus* (Anura: Discoglossidae) implications for the taxonomic assessment of morphologically cryptic species. *Amphibia-Reptilia* 29(4): 523–533. <https://doi.org/10.1163/156853808786230460>
- Wiens JJ, Kuczynski CA, Hua X, Moen DS (2010) An expanded phylogeny of treefrogs (Hylidae) based on nuclear and mitochondrial sequence data. *Molecular Phylogenetics and Evolution* 55(3): 871–882. <https://doi.org/10.1016/j.ympev.2010.03.013>
- Wilke T, Schulthei R, Albrecht C (2009) As time goes by: A simple fool's guide to molecular clock approaches in invertebrates. *American Malacological Bulletin* 27(1/2): 25–45. <https://doi.org/10.4003/006.027.0203>

- Ye J, Coulouris G, Zaretskaya I, Cutcutache I, Rozen S, Madden T (2012) Primer-BLAST: A tool to design target-specific primers for polymerase chain reaction. *BMC Bioinformatics* 13(134): 1–11. <https://doi.org/10.1186/1471-2105-13-S6-S1>
- Zhang P, Liang D, Mao R-L, Hillis DM, Wake DB, Cannatella DC (2013) Efficient Sequencing of Anuran mtDNAs and a Mitogenomic Exploration of the Phylogeny and Evolution of Frogs. *Molecular Biology and Evolution* 30(8): 1899–1915. <https://doi.org/10.1093/molbev/mst091>
- Zheng Y, Peng R, Kuro-o M, Zeng X (2011) Exploring patterns and extent of bias in estimating divergence time from mitochondrial DNA sequence data in a particular lineage: A case study of salamanders (Order Caudata). *Molecular Biology and Evolution* 28(9): 2521–2535. <https://doi.org/10.1093/molbev/msr072>

## Appendix I

**Table A1.** Voucher information, localities, and GenBank accession numbers for the sequences analyzed for this study.

Species	CXCR4	Intron 7	RAG-1	RHO	SIAHI	Tyr	28S	Voucher and source literature of sequences
<i>Boana aguilari</i>	MT824211			MT824337			KF751464	Faivovich et al. (2013, 2021)
<i>Boana albomarginata</i>	KF751476	OQ448590	AY844384	AY844568	AY844794		AY844218	MRT 5870; Jussara, Bahia, Brazil. Faivovich et al. (2005, 2013)
<i>Boana albopunctata</i>		OQ448612		AY844569	AY844795	AY844041		MRT 8229, Petrolina, Goiás, Brazil. Faivovich et al. (2005)
<i>Boana balzani</i>	MT824213	OQ448599	AY844395	AY844582	AY844806		AY844226	MNCN/ADN 5785, Camino a San Onofre, Carrasco, Cochabamba, Bolivia. Faivovich et al. (2005, 2021)
<i>Boana benitezii</i>	KF751477		AY844396	AY844583			AY844227	Faivovich et al. (2005, 2013)
<i>Boana bischoffi</i>	MT824219	OQ448607	AY844398	MT824343		MT824526		AF 327, Fazenda Intervales, Estado de São Paulo. Faivovich et al. (2005, 2021)
<i>Boana boans</i>	KF751478	OQ448591		AY844588	AY844809	AY844055	AY844231	MPEG 17385, Arredores da Fazenda passo Formoso, Manicoré, Amazonas. Faivovich et al. (2005, 2013)
<i>Boana botumirim</i>				MT824344				Faivovich et al. (2021)
<i>Boana buriti</i>		OQ448601		MT824346	MT824484			CHUNB 30653, Brasília, Distrito Federal. Faivovich et al. (2021)
<i>Boana caingua</i>	KF751479	OQ448602		MT824352	AY844812	AY844057	AY844234	AF 515, Ribeirão Grande São Paulo, São Paulo. Faivovich et al. (2005, 2013, 2021)
<i>Boana calcarata</i>							AY844235	Faivovich et al. (2005)
<i>Boana cambui</i>				MT824356	MT824486	MT824534		Faivovich et al. (2021)
<i>Boana cinerascens</i>	KF751480	OQ448595		AY844610			DQ283466	RAET 505, Estação Científica Ferreira Penna, Melgaço, Pará, Brazil. Faivovich et al. (2005, 2013)
<i>Boana cipoensis</i>				MT824357	MT824487			Faivovich et al. (2021)
<i>Boana cordobae</i>	KF751481		AY844411	MT824460	MT824516	AY844066	AY844244	Faivovich et al. (2005, 2013, 2021)
<i>Boana crepitans</i>	KF751482			AY844601		AY844067		Faivovich et al. (2005, 2013)
<i>Boana curupi</i>	MT824227			MT824359	MT824489			Faivovich et al. (2021)
<i>Boana ericae</i>			AY844416	AY844605		MT824537		Faivovich et al. (2005, 2021)



Species	CXCR4	Intron 7	RAG-1	RHO	SLAH1	Tyr	28S	Voucher and source literature of sequences
<i>Boana faber</i>				AY844607				Faivovich et al. (2005)
<i>Boana fasciata</i>	KX200378			AY844608				Faivovich et al. (2005); Feng et al. (2017)
<i>Boana freicanecae</i>	MT824217			MT824366		MT824538		Faivovich et al. (2021)
<i>Boana geographica</i>		OQ448611						QCAZ 16809: Estación Científica Yasuní. PUCE, Laguna, Orellana, Ecuador. in confirmation process
<i>Boana gladiator</i>	MT824212			MT824368				Faivovich et al. (2021)
<i>Boana goiana</i>				MT824372	MT824491	MT824541		Faivovich et al. (2021)
<i>Boana guentheri</i>	MT824245	OQ448608		MT824373	MT824492		AY844253	CFBH 3386: Terra de Areia, Rio Grande do Sul, Brazil. Faivovich et al. (2005, 2021)
<i>Boana heilprini</i>				AY844613				Faivovich et al. (2005)
<i>Boana jaguariavivensis</i>				MT824374	MT824494			Faivovich et al. (2021)
<i>Boana joaquina</i>	KF751484	OQ448605	AY844421	MT824376			AY844256	CFBH 1068: Urubici, Santa Catarina, Brazil. Faivovich et al. (2005, 2013, 2021)
<i>Boana lanciformis</i>				AY844619		AY844081	AY844258	Faivovich et al. 2005
<i>Boana lemai</i>	KF751485		AY844423	AY844620		AY844082	AY844259	Faivovich et al. (2005, 2013)
<i>Boana leptolineata</i>	MT824246	OQ448604	AY844424	AY844621	AY844839	AY844083	AY844260	CFBH 8504: São Francisco de Paula, Rio Grande do Sul, Brazil. Faivovich et al. (2005, 2021)
<i>Boana lundii</i>				AY844623		AY844085	AY844262	Faivovich et al. (2005)
<i>Boana marginata</i>	KF751486		AY844426	AY844624		MT824542	AY844263	Faivovich et al. (2005, 2013, 2021)
<i>Boana marianitae</i>		OQ448610	AY844427	MT824378	AY844843			MNCN/ADN 5901: Camino a Bella Vista, Florida, Santa Cruz, Bolivia. Faivovich et al. (2005, 2021)
<i>Boana melanopleura</i>	KF751487	OQ448600		MT824379	HM444787			MTD-TD 1146: Huancabamba, Pasco, Peru. Faivovich et al. (2013, 2021)
<i>Boana multifasciata</i>	GQ365986		AY844436	AY844633		AY844093	AY844270	Faivovich et al. (2005, 2010)
<i>Boana nympha</i>	KF751488			AY844661		AY844112	AY844289	Faivovich et al. (2005, 2013)
<i>Boana pardalis</i>				AY844637				Faivovich et al. (2005)
<i>Boana pellicens</i>		OQ448597						QCAZ 15354: Via Toachi-Chiriboga. Poza junto a carretera cerca del Rio Orito, Ecuador.
<i>Boana picturata</i>		OQ448594						QCAZ 15549:3 Km from Durango, em el cruce de la vá San Lorenzo e outra carretera X, Esmeraldas, Ecuador.
<i>Boana poaju</i>				MT824380	MT824495			Faivovich et al. (2021)
<i>Boana polytaenia</i>	MT824241	OQ448606	AY844443	MT824429	MT824508		MT824547	CFBH 8394: Cristina, MG. Faivovich et al. (2005, 2021)
<i>Boana pombali</i>	MT824247			MT824431	MT824511		MT824552	Faivovich et al. (2021)
<i>Boana prasina</i>				MT824436			MT824554	Faivovich et al. (2021)
<i>Boana pulchella</i>		OQ448609	AY844445	MT824443	MT824513	MT824557	AY844278	CHUNB 37686: Pilar do Sul, Estado de São Paulo, Brazil. Faivovich et al. (2005, 2021)
<i>Boana punctata</i>		OQ448596		AY844645				QCAZ18185: Estación Biológica Jatun Sacha, Napo. Faivovich et al. (2005)
<i>Boana raniceps</i>	KF751489	OQ448613		AY844646	AY844863	AY844103		MRT 6706: UHE Lajeado Tocantins. Faivovich et al. (2005, 2013)
<i>Boana riojana</i>	MT824238		AY844447	MT824462	MT824518		AY844279	Faivovich et al. (2005, 2021)
<i>Boana roaima</i>	KF751490		AY844448	AY844650		AY844104	AY844280	Faivovich et al. (2005, 2013)

Species	CXCR4	Intron 7	RAG-1	RHO	SLAH1	Tyr	28S	Voucher and source literature of sequences
<i>Boana rufifela</i>		OQ448598		AY844652	AY844867	AY844105	AY844282	CHP-STRI:5114: Quebrada Guabalito, Palmarazo, Parque Nacional General de División Omar Torrijos Herrera, Provincia de Coclé. Faivovich et al. (2005)
<i>Boana semigutata</i>		OQ448603	AY844452	MT824466	MT824519	MT824559	AY844285	CFBH 242: Piraquara, Paraná, Brazil. Faivovich et al. (2005, 2021)
<i>Boana semilineata</i>	KF751491		AY844453	AY844656		AY844108	AY844286	Faivovich et al. (2005, 2013)
<i>Boana sibilae</i>	KF751492	OQ448593	AY844455	AY844658	AY844873	AY844110	AY844288	ROM 39561: Mount Ayanganna, Guyana. Faivovich et al. (2005, 2013)
<i>Boana stellae</i>	MT824229			MT824475		MT824567		Faivovich et al. (2021)
<i>Boana stenocephala</i>				MT824479	MT824520	MT824563		Faivovich et al. (2021)
<i>Boana warrini</i>		OQ448592						RAET 502: Estação Científica Ferreira Penna, Melgaço, Pará, Brazil
<i>Aplastodiscus albofrenatus</i>		OQ448614	KU184083	KU184111	KU184149	KU184246		AF 101: Rio de Janeiro, Rio de Janeiro, Brazil. Berneck et al. (2016)
<i>Aplastodiscus albosignatus</i>		OQ448616	AY844385	KU184114	AY844796	AY844042	AY844219	CFBH 7711: Parque Estadual Serra do Mar, Santa Virginia, São Luís do Paraitinga, São Paulo, Brazil. Faivovich et al. (2005)
<i>Aplastodiscus eugenioi</i>	KF751465							Faivovich et al. (2013)
<i>Aplastodiscus leucopygius</i>	KF751466						AY844261	Faivovich et al. (2005; 2013)
<i>Aplastodiscus perviridis</i>	KF751467						AY844201	Faivovich et al. (2005, 2013)
<i>Aplastodiscus weygoldti</i>		OQ448615	AY844467	KU184124	AY844887	KU184257		AF 68: São Paulo do Aracá, Espírito Santo, Brazil. Faivovich et al. (2005)
<i>Bokermannohyla circumdata</i>	KF751468	OQ448619	AY844409		AY844817	AY844064	AY844242	IT-H0562, MZUSP 93551: Juquitiba, Estado de São Paulo. Berneck et al. (2016); Faivovich et al. (2005; 2013)
<i>Callimedusa tomopterna</i>	GQ366024	OQ448618	AY844497	AY844715		AY844157	AY844328	MPEG 17368, Near Fazenda Passo Formoso, Manicoré, Amazonas, Brazil. Faivovich et al. (2010, 2005)
<i>Callimedusa vaillanti</i>					AY844921			Faivovich et al. (2005)
<i>Myersiobyla liliae</i>			MH251236					Pinheiro et al. (2019a)
<i>Myersiobyla inparquesi</i>							AY844291	Faivovich et al. (2005)
<i>Nesorobyla kanaima</i>	GQ365994	OQ448617		AY844617	MH251240	AY844079		ROM 39586: Mount Ayanganna, Guyana. Faivovich et al. (2005, 2010); Pinheiro et al. (2019a)

AF: Laboratório de Citogenética de Vertebrados. Depto. Genética e Biologia Evolutiva, Instituto de biologia, Universidade de São Paulo.

CHP- STRI: Circulo Herpetologico de Panama-Smithsonian Tropical Research Institute

CFBH: Célio F. B. Haddad. Coleção de anfíbios, SP, Brazil

CHUNB: Coleção herpetológica, Universidade de Brasília, Brazil

MNCN: Museu Nacional de Ciências Naturales, Spain

MPEG: Museu Paraense Emílio Goeldi, Brazil

MRT: Miguel Trefaut Urbano Rodrigues, Universidade de São Paulo, Brazil.

MTD-TD: Museum für Tierkunde, Germany.

MZUSP: Museu de Zoologia, Universidade de São Paulo, Brazil

QCAZ: Colección de anfibios del Museo de Zoología, Pontificia Universidad Católica del Ecuador

RAET: Ruth Amanda Estupina Tristancho, Brazil

ROM: Royal Ontario Museum, Centre for Biodiversity and Conservation Biology: Herpetology, Canada

## Supplementary material I

### Phylogenetic trees and molecular dating of gene trees

Authors: Ruth Amanda Estupiñán, Sávio Torres de Farias, Evonnildo Costa Gonçalves, Mauricio Camargo, Maria Paula Cruz Schneider

Data type: pdf file

Explanation note: Phylogenetic trees corresponding to the studied markers (a. CXCR4, b. FGBI7, c. RAG-1, d. RHO, e. TYRF.SIAH1, g. 28SandC-genes), and the methods used – MP, MB, and ML, corresponding to the 1<sup>st</sup>, 2<sup>nd</sup>, and 3<sup>rd</sup> trees for each marker, respectively). For Jackknife support values from the MP method, and bootstrap support values for the ML method, values below 50% were not presented. Molecular dating of gene trees. a. ND1. b. CYTB, and c. FGBI7 using the Rel-Timemethod in MEGA X.

Copyright notice: This dataset is made available under the Open Database License (<http://opendatacommons.org/licenses/odbl/1.0/>). The Open Database License (ODbL) is a license agreement intended to allow users to freely share, modify, and use this Dataset while maintaining this same freedom for others, provided that the original source and author(s) are credited.

Link: <https://doi.org/10.3897/zookeys.1149.85627.suppl1>