

Celebrating with the ‘beetle’ man: Terry Erwin’s 75th birthday

ZooKeys Editorial Office¹

¹ Pensoft Publishers, Sofia, Bulgaria

Corresponding author: Pensoft Editorial Office (info@pensoft.net)

Received 25 November 2014 | Accepted 25 November 2015 | Published 1 December 2015

Citation: ZooKeys Editorial Office (2015) Celebrating with the ‘beetle’ man: Terry Erwin’s 75th birthday. ZooKeys 541: 1–40. doi: 10.3897/zookeys.541.7316



Our much respected Editor-in-Chief turns 75 years on 1st December, and we would like to seize the opportunity to thank him for all the support and wish him many more years of success and fruitful collaboration with us. Terry Erwin was with ZooKeys from the very beginning. Words can barely describe how much has he contributed to strengthening and developing the journal, especially during its infancy. ZooKeys wouldn’t be what it is now without his great enthusiasm, endless care and friendly attitude to our staff (see our latest editorial Erwin T, Stoev P, Georgiev T, Penev L (2015) ZooKeys 500: traditions and innovations hand-in-hand servicing our taxonomic community). With the following short biographic note, we would like to wholeheartedly say to our god father

Thank you, Terry! We wish you a long, healthy and happy life!

Terry L. Erwin was born in St. Helena of Napa County, California on December 1, 1940. His father was a “tin-knocker” i.e., a sheetmetal worker, and race car driver in the California circuit; his mother was a government clerk. Terry spent his youth trout fishing in the High Sierra with his maternal grandfather. As a teenager, with prodding from his father, he began building hot-rod cars and was a founding member and later the President of the California Conquistadores, a hot-rod club in the San Francisco Bay Area.

He put himself through college by working on Atomic Submarines at Mare Island Naval Shipyard where he was a helper in the “Asbestos” department. It was exactly at this time, when he made the life-changing decision that following his father’s footsteps was not in the cards for him. He then became a student under the guidance of the noted Coleopterist, J. Gordon Edwards, at San Jose State College. With the help of Gordon’s enthusiasm and guidance, Terry solved the intractable taxonomy of the Californian Bombardier Beetles – a group that still stays close to his heart. He then went on to explore the global bombardier beetle fauna for his dissertation under the mentorship of George E. Ball at the University of Alberta, Canada, finishing in 1969, who to this day is still his dear Mentor. And, continuing Ball’s tradition of mentorship, he has now his own Mentees, all young women working on carabid beetle projects.

Having decided that he wanted to work under the three greatest (living) carabidologists, the first being Prof. Ball, Terry obtained postdoctoral fellowships at the Museum of Comparative Zoology at Harvard with Philip J. Darlington Jr. and at Lund University, Sweden with Carl H. Lindroth. However, a position opened at the National Museum of Natural History, Smithsonian Institution (then the USNM or United States National Museum) in the Department of Entomology upon the retirement of Oscar Cartwright. With the support of Washington Biologists Field Club (WBFC) members Paul Spangler (Coleopterist) and Karl Krombien (Chairman of Entomology), Terry was able to accept the position and within two months took a year-long sabbatical to Sweden to study with Lindroth.

He returned in 1971, to take up the reins as the second Coleopterist within the Department (now he is the only Coleopterist with the Smithsonian Institution in charge of 12 million museum specimens). While in Sweden, the Chairmanship of the Department turned over from Karl Krombien to Paul D. Hurd, who upon arrival saw on his new desk a proposal previously left by Terry asking to obtain funding for studies of the California carabid beetles. Having learned of monies for studies in Central America, Hurd crossed out “California” and wrote “Panama.” To Terry’s great surprise, he arrived home from Sweden only to find out he was checked in on the next plane to the Canal Zone. That journey made the beginning of a lifetime career devoted to the studies of biodiversity in Neotropical forests.

In 1982, with the publication of a small paper (Erwin TL (1982) Tropical forests: Their richness in Coleoptera and other arthropod species. *The Coleopterists Bulletin* 36 (1): 74–75) on the beetle fauna of a Panamanian tree species, Terry created a cottage industry in canopy studies both with the fogging technique of collecting canopy arthropods, but also in trying to estimate the number of species on the planet. In that paper, he had hypothesized that there were as many as 30 million species worldwide, an

order of magnitude difference from the existing estimates at the time predicting just 1 million. A lot of people got excited, especially those in the Conservation business. If true, this meant that the world was losing a lot more species than previously imagined. The tiny 1.5-page paper that Terry wrote 34 years ago, has now been cited more than 1000 times.

Today, Terry continues his studies of biodiversity in the western Amazon Basin, at present in Ecuador. He has also not forgotten his favorite beetles, currently conducting taxonomic studies on carabids, particularly those genera living in the rainforest canopy. Being a prolific author he has written altogether (as of 20 November 2015) 270 papers, books, and monographs, most of them dealing with his favorite coleopterans. Keep up with Terry's publications on Google Scholars.

More information about Terry Erwin and his exciting career can be found in Rice ME (2015) Terry L. Erwin: She Had a Black Eye and in Her Arm She Held a Skunk. *American Entomologist*, volume 61, number 1, republished in *ZooKeys* 500: 9–24. doi: 10.3897/zookeys.500.9772.

Publication list of Terry L. Erwin, NMNH, Smithsonian Institution – as of November 23, 2015

1. Erwin TL (1965) *Trachykele opulenta* Fall (Buprestidae) emerging from furniture. *Pan-Pacific Entomologist* 41(1): 68.
2. Erwin TL (1965) A revision of *Brachinus* of North America: Part I. The California species (Coleoptera: Carabidae). *The Coleopterists Bulletin* 19(1): 1–19.
3. Erwin TL (1966) *Cyphon* sp. (Helodidae) reared from tree hole. *Pan-Pacific Entomologist* 42(1): 68.
4. Erwin TL (1966) *Brachinus pallidus* Erwin, a carabid beetle with an entomophagous larva. *Pan-Pacific Entomologist* 42(1): 73.
5. Erwin TL (1967) Bombardier beetles (Coleoptera: Carabidae) of North America: Part II. Biology and behavior of *Brachinus pallidus* Erwin in California. *The Coleopterists Bulletin* 21(2): 41–55.
6. Erwin TL (1967) Fire: A possible zoogeographic isolation mechanism of the Mexican Transvolcanic Belt. *Proceedings of the Entomology Society of Alberta* 15: 9. [Abstract]
7. Erwin TL (1969) A new bombardier beetle in Canada (Coleoptera: Carabidae). *Opuscula entomologica* 34(3): 283–286.
8. Erwin TL (1969) Preliminary diagnoses of five new North American *Brachinus* (Coleoptera: Carabidae). *Opuscula entomologica* 34(3): 287–288.
9. Ball GE, Erwin TL (1969) A taxonomic synopsis of the Tribe Loricerini (Coleoptera: Carabidae). *Canadian Journal of Zoology* 47(5): 877–907. doi: 10.1139/z69-146
10. Erwin TL (1970) A reclassification of bombardier beetles and a taxonomic revision of the North and Middle American species (Carabidae: Brachinida). *Quaestiones entomologicae* 6: 4–215. [Dissertation]
11. Erwin TL (1970) The nearctic species of the Genus *Leistus* Frölich (Coleoptera: Carabidae). *Pan-Pacific Entomologist* 46: 111–119.

12. Erwin TL (1970) Unique structures in members of *Tachys sensu lat.* (Coleoptera: Carabidae). *Pan-Pacific Entomologist* 46: 231–232.
13. Erwin TL (1970) A description of the larva of *Thyce harfordi* Casey (Coleoptera: Scarabaeidae: Melolonthini). *Psyche* 77(1): 50–53. doi: 10.1155/1970/75264
14. Erwin TL (1971) Notes and corrections to a reclassification of bombardier beetles (Carabidae, Brachinida). *Quaestiones entomologicae* 7: 281.
15. Erwin TL (1971) A teratomorphic carabid beetle with notes on polymorphic asymmetry of the gular region in the same population (Coleoptera: Carabidae). *Pan-Pacific Entomologist* 47(4): 303.
16. Erwin TL, Erwin LJ (1971) A guide to the ground-beetle collection in the Muséum National d'Histoire Naturelle, Paris (Coleoptera: Carabidae). Multilithed by SI Duplicating Unit for limited distribution, 22 pp.
17. Erwin TL (1971) Fossil tachyine beetles from Mexican and Baltic Amber with notes on a new synonymy of an extant group (Col., Carabidae). *Entomologica Scandinavica* 2(3): 233–236. doi: 10.1163/187631271X00239
18. Erwin TL (1972) Two new genera of bembidiine carabid beetles from Australia and South America with notes on their phylogenetic and zoogeographic significance (Coleoptera). *Breviora* 383: 1–19.
19. Erwin TL (1972) The lost type of *Brachinus sallei* Chaudoir (Coleoptera: Carabidae). *Pan-Pacific Entomologist* 48(1): 63–64.
20. Erwin TL (1972) Observations on the life history of bombardier beetles: Mechanism of egg-hatching (Coleoptera: Carabidae). *Pan-Pacific Entomologist* 48(1): 64.
21. Erwin TL (1972) *Trechus obtusus* Erichson in California (Coleoptera: Carabidae). *The Coleopterists Bulletin* 26(2): 42.
22. Erwin TL (1972) Om biologien hos bombardérbiller (Col., Carabidae, Brachinida). *Entomologiske Meddelelser* 40: 65–71.
23. Erwin TL (1972) The Carabid Beetles of New Guinea, by Philip J. Darlington. *Systematic Zoology* 21(3): 343–347. [Review]
24. Erwin TL, Ball GE (1972) Classification of the *Ovipennis* and *Trifaria* groups of *Nebria* Latreille (Coleoptera: Carabidae: Nebriini). *Proceedings of the Biological Society of Washington* 85(7): 77–108.
25. Erwin TL (1973) Phylogenetic, zoogeographic, and bio-systematic studies of certain carabid ground beetles. *American Philosophical Society Year Book* 1972, (1973), 362–363.
26. Erwin TL (1973) Studies of the subtribe Tachyina (Coleoptera: Carabidae: Bembidiini), Part I: A revision of the Neotropical genus *Xystosomus* Schaum. *Smithsonian Contributions to Zoology* No. 140, 39 pp.
27. Erwin TL (1973) Nomenclatorial notes on the Tachyini (Coleoptera: Carabidae). *Proceedings of the Entomological Society of Washington* 75(1): 125.
28. Erwin TL (1973) A supplement to the bombardier beetles of North and Middle America: New records for Middle America (Coleoptera: Carabidae). *The Coleopterists Bulletin* 27(2): 79–82.
29. Erwin TL (1973) Carabid beetles, mountain tops, and trees. *Proceedings of the Entomological Society of Washington* 75(1): 127. [Abstract]

30. Erwin TL (1974) Studies of the subtribe Tachyina (Coleoptera: Carabidae: Bembidiini), Part II: A revision of the New World-Australian Genus *Pericompsus* LeConte. Smithsonian Contributions to Zoology No. 162, 96 pp.
31. Erwin TL (1974) Studies of the subtribe Tachyina (Coleoptera: Carabidae: Bembidiini) Supplement A: Lectotype designations for New World species, two new genera, and notes on generic concepts. Proceedings of the Entomological Society of Washington 76(2): 123–155.
32. Erwin TL (1974) The genus *Coptocarpus* Chaudoir of the Australian Region with notes on related African species (Coleoptera: Carabidae: Oodini). Smithsonian Contributions to Zoology 184, 25 pp.
33. Erwin TL (1974) Surtsey, Iceland: The Development of a New Fauna, 1963–1970, Terrestrial Invertebrates, by Carl H. Lindroth, Hugo Andersson, Hogni Bodvarsson, and Sigurdur H. Richter. Entomologica Scandinavica, Suppl. 5, 1973. Munksgaard, International Booksellers and Publishers Ltd., 35, Norre Sogade, DK 1370 Copenhagen K, Denmark. 280 p.; 50 fig. Paper 40 Danish Crowns (\$5.35). The Coleopterists Bulletin 28(3): 166. [Review]
34. Erwin TL (1974) The ground beetle components of the panamanian fauna. In: Rubinoff RW (Ed.) Environmental Monitoring and Baseline Data. Smithsonian Institution Environmental Science Program, 124–128.
35. Erwin TL (1975) Studies of the subtribe Tachyina (Coleoptera: Carabidae: Bembidiini), Part III: Systematics, phylogeny, and zoogeography of the genus *Tachyta* Kirby. Smithsonian Contributions to Zoology 208, 68 pp.
36. Erwin TL (1975) The ground beetle types of Max Liebke in the Smithsonian Institution, Washington, D. C. (Coleoptera: Carabidae). The Coleopterists Bulletin 29(4): 267–268.
37. Erwin TL (1975) Relationships of predaceous beetles to tropical forest wood decay. Part I. Descriptions of the immature stages of *Eurycoleus macularis* Chevrolat (Carabidae: Lebiini). The Coleopterists Bulletin 29(4): 297–300.
38. Erwin TL (1976) A case of homonymy in the Tachyina (Coleoptera: Carabidae: Bembidiini). The Coleopterists Bulletin 30(1): 94.
39. Erwin TL (1976) Chirp and rattle, dart and glitter! Smithsonian magazine, November 1976, 116–120. [Popular article on the Insect Zoo, photographs by Kjell Sandved]
40. Erwin TL, Erwin LJM (1976) Relationships of predaceous beetles to tropical forest wood decay. Part II. The natural history of Neotropical *Eurycoleus macularis* Chevrolat (Carabidae: Lebiini) and its implications in the evolution of ectoparasitoidism. Biotropica 8(4): 215–224. doi: 10.2307/2989713
41. Erwin TL (1977) Studies of the subtribe Tachyina (Coleoptera: Carabidae: Bembidiini), Supplement B: Lectotype designation of *Masoreus ridiculus* Schaufuss and transfer of this species to *Polyderis*. The Coleopterists Bulletin 31(1): 90.
42. Erwin TL, Whitehead DR, Ball GE (1977) Family 4. CARABIDAE, The Ground Beetles. North American Beetle Fauna Project. In: Arnett R (Ed.) Checklist of the Beetles of Canada, United States, Mexico, Central America and the West Indies. The Biological Research Institute of America, Inc., Gainesville, Florida, 1–68.

43. Erwin TL (1978) Studies of the subtribe Tachyina (Coleoptera: Carabidae: Bembidiini), Supplement C: Discovery of the sister group of *Mioptachys* Bates, in the Amazon Basin – *Inpa psydroides* a new genus and species. The Coleopterists Bulletin 32(1): 29–36.
44. Erwin TL (1978) The larva of Neotropical *Enceladus gigas* Bonelli (Coleoptera: Carabidae: Siagoninae: Enceladini) with notes on the phylogeny and classification of some of the more primitive tribes of ground beetles. The Coleopterists Bulletin 32(2): 99–106.
45. Erwin TL (1978) Handbook of Common New Guinea Beetles, by J. Linsley Gressitt and Richard W. Hornabrook, 1977, Wau Ecology Institute, Box 77, Wau, Papua New Guinea, viii + 87 pp., with 35 figs. US \$4.50, AU \$3.50, K 3.00. ESA Bulletin 24(4): 443–444. [Review]
46. Erwin TL, House GN (1978) A catalogue of the primary types of Carabidae (incl. Cicindelinae) in the collections of the United States National Museum of Natural History (USNM) (Coleoptera). The Coleopterists Bulletin 32(3): 231–255.
47. Erwin TL (1978) Systematic, natural history, and zoogeographic notes on the Genus *Agra* Fabricus, with a description of a new species from Panamá (Coleoptera: Carabidae: Lebiini). The Coleopterists Bulletin 32(4): 261–268.
48. Erwin TL, Halpern AL (1978) Max Bänninger: His collection and publications (Coleoptera: Carabidae). The Coleopterists Bulletin 32(4): 357–366.
49. Erwin TL (1978) Techniques. The Coleopterists Bulletin 32(4): 372.
50. Erwin TL (1979) The American connection, past and present, as a model blending dispersal and vicariance in the study of biogeography. In: Erwin TL, Ball GE, Whitehead DR, Halpern AL (Eds) Carabid Beetles: Their evolution, natural history, and classification. Proceedings of the First International Symposium of Carabidology. Dr. W. Junk b.v. Publishers, The Hague, 355–367. doi: 10.1007/978-94-009-9628-1_18
51. Erwin TL (1979) A review of the natural history and evolution of ectoparasitoid relationships in carabid beetles. In: Erwin TL, Ball GE, Whitehead DR, Halpern AL (Eds) Carabid Beetles: Their evolution, natural history, and classification. Proceedings of the First International Symposium of Carabidology. Dr. W. Junk b.v. Publishers, The Hague, 479–484. doi: 10.1007/978-94-009-9628-1_26
52. Erwin TL (1979) Thoughts on the evolutionary history of ground beetles: Hypotheses generated from comparative faunal analyses of lowland forest sites in temperate and tropical regions. In: Erwin TL, Ball GE, Whitehead DR, Halpern AL (Eds) Carabid Beetles: Their evolution, natural history, and classification. Proceedings of the First International Symposium of Carabidology. Dr. W. Junk b.v. Publishers, The Hague, 539–592. doi: 10.1007/978-94-009-9628-1_30
53. Erwin TL, Ball GE, Whitehead DR, Halpern AL (Eds) (1979) Carabid Beetles: Their evolution, natural history, and classification. Proceedings of the First International Symposium of Carabidology. Dr. W. Junk b.v. Publishers, The Hague, 635 pp.
54. Erwin TL (1980) Systematic and zoogeographic notes on Apotomini, an old world faunal element new to the western hemisphere list, with a description of a new species from Brazil (Coleoptera: Carabidae). The Coleopterists Bulletin 34(1): 99–104.

55. Erwin TL (1980) Application of a Computerized General Purpose Information Management System (SELGEM) to Medically Important Arthropods (Diptera: Culcidae). Smithsonian Institution. [Abstract]
56. Erwin TL, Kavanaugh DH (1980) On the identity of *Bembidion puritanum* Hayward (Coleoptera: Carabidae: Bembidiini). *The Coleopterists Bulletin* 34(2): 241–242.
57. Menier JJ, Erwin TL (1980) Retirement of Mme Andree Bons of the Entomology laboratory at the Paris Museum. *The Coleopterists Bulletin* 34(1): 30.
58. Erwin TL, Scott JC (1981) Seasonal and size patterns, trophic structure, and richness of Coleoptera in the tropical arboreal ecosystem: The fauna of the tree *Luehea seemannii* Triana and Planch in the Canal Zone of Panamá. *The Coleopterists Bulletin* 34(3): 305–322.
59. Erwin TL, Kavanaugh DH (1981) Systematics and zoogeography of *Bembidion* Latreille: I. The *carlhi* and *erasum* groups of Western North America (Coleoptera: Carabidae: Bembidiini). *Entomologica Scandinavica Supplement* 15: 33–72.
60. Erwin TL (1981) A synopsis of the immature stages of Pseudomorphini (Coleoptera: Carabidae) with notes on tribal affinities and behavior in relation to life with ants. *The Coleopterists Bulletin* 35(1): 53–68.
61. Erwin TL (1981) Taxon pulses, vicariance, and dispersal: An evolutionary synthesis illustrated by carabid beetles. In: Nelson G, Rosen D (Eds) *Vicariance Biogeography: A Critique*. Columbia University Press, New York, 159–183.
62. Erwin TL (1981) Natural history of Plummers Island, Maryland. XXVI. The ground beetles of a temperate forest site (Coleoptera: Carabidae): An analysis of fauna in relation to size, habitat selection, vagility, seasonality, and extinction. *Bulletin of the Biological Society of Washington* 5: 105–224.
63. Erwin TL (1981) Canopy beetles: Clarification of heat gain and water loss. *The Coleopterists Bulletin* 35(3): 315–316.
64. Erwin TL (1982) *Agra*, arboreal beetles of Neotropical forests: *erythropus* group systematics (Carabidae). *Systematic Entomology* 7: 39–71. doi: 10.1111/j.1365-3113.1982.tb00125.x
65. Erwin TL, Adis J (1982) Amazon inundation forests: Their role as short-term refuges and generators of species richness and taxon pulses. In: Prance G (Ed.) *Biological Diversification in the Tropics*. Columbia University Press, New York, 358–371.
66. Erwin TL (1982) *Agra*, arboreal beetles of Neotropical forests: *platyscelis* group systematics (Carabidae). *Systematic Entomology* 7: 185–210. doi: 10.1111/j.1365-3113.1982.tb00131.x
67. Erwin TL (1982) Small terrestrial ground-beetles of Central America (Carabidae: Bembidiina and Anillina). *Proceedings of the California Academy of Sciences* 42(19): 455–496.
68. Dritschilo W, Erwin TL (1982) Responses in abundance and diversity of cornfield carabid communities to differences in farm practices. *Ecology* 63(4): 900–904. doi: 10.2307/1937229
69. Erwin TL (1982) Tropical forests: Their richness in Coleoptera and other arthropod species. *The Coleopterists Bulletin* 36(1): 74–75.

70. Erwin TL (1983) Tropical forest canopies, the last biotic frontier. *Bulletin of the Entomological Society of America* 29(1): 14–19. doi: 10.1093/besa/29.1.14
71. Erwin TL (1983) Baron Maximilien de Chaudoir: Chaudoir's studies of the taxa *Agrina* and *Brachinitae* (Coleoptera: Carabidae). *The Coleopterists Bulletin* 36(3): 501–511.
72. Ball GE, Erwin TL (1983) The Baron Maximilien de Chaudoir: Inheritance, associates, travels, work, and legacy. *The Coleopterists Bulletin* 36(3): 475–501.
73. Erwin TL (1983) *Agra*, arboreal beetles of Neotropical forests: *famula* and *formicaria* groups systematics (Carabidae). *Systematic Entomology* 8: 263–292. doi: 10.1111/j.1365-3113.1983.tb00482.x
74. Erwin TL (1983) Beetles and other arthropods of the tropical forest canopies at Manaus, Brasil, sampled with insecticidal fogging techniques. In: Sutton SL, Whitmore TC, Chadwick AC (Eds) *Tropical Rain Forests: Ecology and Management*. Blackwell Scientific Publications, Oxford, 59–75.
75. Erwin TL (1984) *Agra*, arboreal beetles of Neotropical forests: *palmata* group systematics (Carabidae). *Systematic Entomology* 9: 9–48. doi: 10.1111/j.1365-3113.1984.tb00499.x
76. Erwin TL (1984) Studies of the Tribe Bembidiini (Coleoptera: Carabidae): Lectotype designations and species group assignments for *Bembidion* species described by Thomas L. Casey, et al. *Pan-Pacific Entomologist* 60(3): 165–187.
77. Erwin TL (1984) Composition and origin of the ground-beetle fauna of Sri Lanka (Coleoptera; Carabidae). In: Fernando CH (Ed.) *Ecology and Biogeography of Sri Lanka*. Dr. W. Junk b.v. Publishers, The Hague, 371–389. doi: 10.1007/978-94-009-6545-4_18
78. Erwin TL, Sims LL (1984) Carabid beetles of the West Indies (Insecta: Coleoptera): A synopsis of the genera and checklists of tribes of Caraboidea, and of the West Indian species. *Quaestiones entomologicae* 20: 351–464.
79. Erwin TL (1984) Small terrestrial ground beetles of the Amazon Basin (Coleoptera: Bembidiini: Tachyina and Anillina). *Amazoniana* 8(4): 511–518.
80. Kavanaugh DH, Erwin TL (1985) *Trechus obtusus* Erichson (Coleoptera: Carabidae), a european ground beetle, on the pacific coast of North America: Its distribution, introduction and spread. *Pan-Pacific Entomologist* 61(2): 170–179.
81. Erwin TL (1985) Tambopata Reserved Zone, Madre de Dios, Perú: History and description of the reserve. *Revista Peruana de Entomologia* 27: 1–8.
82. Erwin TL (1985) The taxon pulse: A general pattern of lineage radiation and extinction among carabid beetles. In: Ball GE (Ed.) *Taxonomy, phylogeny, and zoogeography of beetles and ants: A volume dedicated to the memory of Philip Jackson Darlington Jr. 1904-1983*. Dr. W. Junk b.v. Publishers, The Hague, 437–472.
83. Erwin TL, Stork N (1985) The Hiletini, an ancient and enigmatic tribe of Carabidae with a pantropical distribution (Coleoptera). *Systematic Entomology* 10(4): 405–451. doi: 10.1111/j.1365-3113.1985.tb00149.x
84. Lindroth CH, Bangsholt F, Baranowski R, Erwin TL, Jorum P, Landin B-O, Refseth D, Silfverberg H (1985) *The Carabidae (Coleoptera) of Fennoscandia and Denmark*. Vol. 1. E. J. Brill Publishers, Copenhagen, 225 pp.

85. Erwin TL (1986) *Agra*, arboreal beetles of Neotropical forests: *mixta*-group, *virgata*-group, and *ohausi*-group systematics (Carabidae). *Systematic Entomology* 11(3): 293–316. doi: 10.1111/j.1365-3113.1986.tb00183.x
86. Erwin TL (1986) Species Diversity in Insects. 33rd Annual Systematics Symposium, Missouri Botanical Gardens, St. Louis, MO. [Abstract]
87. Adis J, Paarmann W, Erwin TL (1986) On the natural history and ecology of small terrestrial Ground Beetles (Col.: Bembidiini: Tachyina: *Polyderis*) from an Amazonian black water inundation forest. In: den Boer PJ, Theile HU, Weber F (Eds) *Carabid Beetles: Their Adaptations and Dynamics*. Gustav Fischer, Stuttgart, New York, 413–427.
88. Lindroth CH, Bangsholt F, Baranowski R, Erwin TL, Jorum P, Landin B-O, Refseth D, Silfverberg H (1986) *The Carabidae (Coleoptera) of Fennoscandia and Denmark*. Vol. 2. E. J. Brill Publishers, Copenhagen, 497 pp.
89. Erwin TL (1987) *Agra*, arboreal beetles of Neotropical forests: *feisthameli* group systematics (Carabidae). *Systematic Entomology* 12(2): 137–161. doi: 10.1111/j.1365-3113.1987.tb00192.x
90. Erwin TL (1988) The tropical forest canopy: the heart of biotic diversity. In: Wilson EO (Ed.) *Biodiversity*. National Academy Press, Washington, DC, 123–129.
91. Adis J, Erwin TL (Eds) (1988) [Lindroth, C. H., *The Ground Beetles (Carabidae) of Fennoscandia: A zoogeographic study*. Part II. Maps.] Amerind Publishing Co. Pvt. Ltd., New Delhi, 271 pp.
92. Erwin TL, Pogue MG (1988) *Agra*, arboreal beetles of Neotropical forests: Biogeography and the forest refugium hypothesis (Carabidae). In: Heyer WR, Vanzolini PE (Eds) *Neotropical Distribution Patterns: Proceedings of a 1987 Workshop*. Proceedings of the Brazilian Academy of Sciences, 161–188.
93. Farrell BD, Erwin TL (1988) Leaf-beetles (Chrysomelidae) of a forest canopy in amazonian Perú: synoptic list of taxa, seasonality and host-affiliations. In: Jolivet P, Petitpierre E, Hsiao T (Eds) *The Biology of the Chrysomelidae*. Dr. W. Junk b.v. Publishers, The Hague, 73–90. doi: 10.1007/978-94-009-3105-3_5
94. Erwin TL (1989) Canopy arthropod biodiversity: A chronology of sampling techniques and results. *Revista Peruana de Entomologia* 32: 71–77.
95. Erwin TL (1991) The ground-beetles of Central America (Carabidae) I: Carabinae (in part): Notiophilini, Loricerini, Carabini. *Smithsonian Contributions to Zoology* 501, 30 pp.
96. Kavanaugh DH, Erwin TL (1991) The tribe Cicindini Bänninger (Coleoptera: Carabidae): Comparative morphology, natural history, and reclassification. *Proceedings of the Entomological Society of Washington* 93(2): 356–389.
97. Erwin TL (1991) An evolutionary basis for conservation strategies. *Science* 253: 750–752. doi: 10.1126/science.253.5021.750
98. Erwin TL (1991) How many species are there?: Revisited. *Conservation Biology* 5(3): 330–333. doi: 10.1111/j.1523-1739.1991.tb00145.x
99. Erwin TL (1991) Gentry AH (Ed.) 1990. *Four Neotropical Rainforests*. Yale University Press, New Haven and London, 627 pp. *Association of Systematic Collections Newsletter* 19(3): 38–40. [Review]

100. Erwin TL (1991) Establishing a tropical species co-occurrence database. Part 1. A plan for developing consistent biotic inventories in temperate and tropical habitats. *Memoria del museo de historia natural* 20: 1–16.
101. Erwin TL (Ed.) (1991) Establishing a tropical species co-occurrence database. *Memoria del museo de historia natural* 20: 1–45.
102. Erwin TL, Kabel M (1991) Establishing a tropical species co-occurrence database. Part 2. An automated system for mapping dominant vegetation. *Memorias del museo de historia natural* 20: 17–36.
103. Erwin TL, Pearson DL (1991) Establishing a tropical species co-occurrence database. Part 3. An integrated approach toward understanding biological diversity. *Memorias del museo de historia natural* 20: 37–45.
104. Erwin TL (1991) The significance of diversity: New challenges for the entomologist. In: Vinson SB, Metcalf RL (Eds) *Entomology serving society: Emerging technologies and challenges*. Entomological Society of America, Lanham, Maryland, 25–39.
105. Erwin TL (1991) Natural history of the carabid beetles at the BIOLAT Rio Manu Biological Station, Pakitzta, Perú. *Revista Peruana de Entomología* 33: 1–85.
106. Erwin TL (1992) A current vision of insect diversity. In: Sarukhán J, Dirzo R (Eds) *México ante los retos de la biodiversidad, Mexico confronts the challenges of biodiversity*. Comisión Nacional para el Conocimiento y Uso de la Biodiversidad, Mexico City, 91–97.
107. Erwin TL (1992) Life in the Treetops, *Australian Encyclopedia of Life* (1 page). Australia.
108. Erwin TL (1992) Stratification and distribution of neotropical forest microhabitats and associated arthropod faunules; a methodology report. Association of Tropical Biology, Honolulu, HI. [Abstract]
109. Kavanaugh DH, Erwin TL (1992) Extinct or Extant? A new species of intertidal bembidiine (Coleoptera: Carabidae: Bembidiini) from the Palos Verdes Peninsula, California. *The Coleopterists Bulletin* 46(3): 311–320.
110. Erwin TL (1993) Conserving Biodiversity: A Research Agenda for Development Agencies. Report of a Panel of the Board on Science and Technology for International Development, U. S. National Research Council. National Academy Press, 1992. 116 pp. *The Quarterly Review of Biology* 66(2): 300. [Review]
111. Adis J, Erwin TL (Eds) (1993) [Lindroth, C. H., *The Ground Beetles (Carabidae) of Fennoscandia: A zoogeographic study. Part I. Specific Zoogeographic Facts.*] Amerind Publishing Co. Pvt. Ltd., New Delhi, 630 pp.
112. Adis J, Erwin TL (Eds) (1993) [Lindroth, C. H., *The Ground Beetles (Carabidae) of Fennoscandia: A zoogeographic study. Part III. General Facts.*] Amerind Publishing Co. Pvt. Ltd., New Delhi, 814 pp.
113. Kremen C, Colwell RK, Erwin TL, Murphy DD, Noss RF, Sanjayan MA (1993) Terrestrial arthropod assemblages: Their use in conservation planning. *Conservation Biology* 7(4): 796–808. doi: 10.1046/j.1523-1739.1993.740796.x
114. Erwin TL (1993) Stratification of neotropical forest microhabitats and associated arthropod faunules; a progress report. *Selbyana* 14: 10.
115. Erwin TL (1993) *Agra*, arboreal beetles of Neotropical forests: *rufoaenea* and *quararibea* group systematics (Carabidae). *Revista Peruana de Entomología* (1991) 34: 15–28.

116. Erwin TL (1993) 97% of Biodiversity: Conservation's neglected legions. Systematics and Conservation: Foraging a Partnership, 16th Annual Spring Systematics Symposium, Field Museum of Natural History, Chicago. [Abstract]
117. Erwin TL (1993) Taking measure of Earth's megadiversity. Symposium: Biodiversity and Climate change. Entomological Society of Manitoba, Winnipeg, Canada. [Abstract]
118. Erwin TL (1994) Arboreal beetles of tropical forests: The Xystosomi group, subtribe Xystosomina (Coleoptera: Carabidae: Bembidiini). Part I. Character analysis, taxonomy, and distribution. *The Canadian Entomologist* 126(3): 549–666. doi: 10.4039/Ent126549-3
119. Erwin TL (1994) Insects of Panamá and Mesoamerica: Selected Studies, by D. Quintero and A. Aiello, 1992. Oxford Science Publications, 692 pp. *The Quarterly Review of Biology* 69(3): 410. [Review]
120. Erwin TL (1995) Measuring arthropod biodiversity in the tropical forest canopy. In: Lowman M, Nadkarni N (Eds) *Forest Canopies*. Academic Press Inc., San Diego, 109–127.
121. Erwin TL (1995) Arboreal Beetles of Neotropical Forests: The Genus *Agra* Fabricius (Coleoptera: Carabidae: Lebiini). Third International Symposium of Carabidology, 4–7 September 1995, Kauniainen, Finland. [Abstract]
122. Erwin TL (1995) Sierrazul, Ecuador: A primeval cloud forest overlooking the amazon basin (ready for biotic researchers and conservation biologists). *Newsletter of the International Center of Tropical Ecology* 2(2): 6–7. [Popular article]
123. Erwin TL (1996) Arboreal Beetles of Neotropical Forests: *Agra* Fabricius, the *cayennensis* complex (Coleoptera: Carabidae: Lebiini: Calleidina). *Annales Zoologici Fennici* 33(1): 17–21.
124. Erwin TL (1996) Evolution at the equator: arboreal and alticolous beetles and their taxon pulses (Coleoptera: Carabidae). XXI International Congress of Entomology, Florence, Italy. [Abstract]
125. Erwin TL (1996) Biodiversity at its utmost: Tropical forest beetles. In: Reaka-Kudla ML, Wilson DE, Wilson EO (Eds) *Biodiversity II. Understanding and protecting our biological resources*. Joseph Henry Press, Washington, DC, 27–40.
126. Venable GL, Erwin TL (1997) Mapping of the biodiversity site at Pakitza. In: Wilson DE, Sandoval A (Eds) *Manu, The biodiversity of southeastern Peru*. Editorial horizonte, Lima, 29–42.
127. Erwin TL (1997) Natural history of the carabid beetles at the BIOLAT Biological Station, Rio Manu, Pakitza, Perú, Supplement I. Additional records. Wilson DE, Sandoval A (Eds) *Manu, The biodiversity of southeastern Peru*. Editorial horizonte, Lima, 359–368.
128. Erwin TL (1997) Global human expansion and diminishing biodiversity. ESA Program Formal Conference, "The Interacting Global Web of Insects, Human Cultures, and Modern Technologies". [Abstract]
129. Adis J, Amorim MA, Erwin TL, Bauer T (1997–1998) On ecology, life history and survival strategies of a wing-dimorphic ground beetle (Col. Carabidae: Odacanthini: *Colliuris*) inhabiting central Amazonian inundation forests. *Studies on Neotropical Fauna and Environment* 32: 174–192. doi: 10.1080/01650521.1997.10383076
130. Kress WJ, Heyer WR, Acevedo-Rodriguez P, Coddington JA, Cole D, Erwin TL, Meggers BJ, Pogue MG, Thorington RW Jr, Vari RP, Weitzman MJ, Weitzman SH (1998)

- Amazonian biodiversity: Assessing conservation priorities with taxonomic data. *Biodiversity and Conservation* 7: 1577–1587. doi: 10.1023/A:1008889803319
131. Erwin TL (1998) Evolution at the equator: Arboreal and alticolous beetles and their taxon pulses with descriptions of a new *Agra* subclade and its species (Coleoptera: Carabidae: Lebiini). In: Ball GE, Casale A, Vigna Taglianti A (Eds) *Phylogeny and classification of Caraboidea (Coleoptera: Adephaga)*. Proceedings of a Symposium (28 August 1996, Florence, Italy), XX International Congress of Entomology. Museo Regionale Scienze Naturali, Torino, Atti. Torino, 491–510.
 132. Erwin TL (1998) *Forests and Insects*. Allan D. Watt, Nigel E. Stork, and Mark D. Hunter (editors) London: Chapman & Hall, 1997 pp. i-xv, 1-406. *Biodiversity and Conservation* 7(12): 1662–1664. [Review]
 133. Erwin TL, Kavanaugh DH (1999) Studies of the Subtribe Tachyina (Coleoptera: Carabidae: Bembidiini), Supplement D: Description of a male of *Costitachys inusitatus* Erwin, with notes on distribution of this species. *The Coleopterists Bulletin* 53(1): 52–55.
 134. Heyer WR, Coddington JA, Kress WJ, Acevedo-Rodriguez P, Cole D, Erwin TL, Meggers BJ, Pogue MG, Thorington RW Jr, Vari RP, Weitzman MJ, Weitzman SH (1999) Amazonian biotic data and conservation decisions. *Ciência e Cultura, Sao Paulo* 51(5–6): 372–385.
 135. Erwin TL (1999) Mosquitoes, birds, bats, beetles & other flying and nonflying things: How instructive are their distribution for tropical conservation strategies? AMCA Annual Meeting Symposium, “Species diversity & challenges in systematics”. [Abstract]
 136. Erwin TL (2000) Arboreal beetles of Neotropical forests: *Agra* Fabricius, the *Novaurora* (Coleoptera: Carabidae: Lebiini: Calleidina). *Smithsonian Contributions to Zoology* 608: 1–33. doi: 10.5479/si.00810282.608
 137. Erwin TL (2000) Canopy Arthropods of the Western Amazon Basin. XXI ICE Symposium: Amazon Insects. Abstract Book I: 98. [Abstract]
 138. Erwin TL, Kavanaugh DH (2000) A New Species of the *Tachyta* Subgenus *Paratachyta* Erwin (Coleoptera: Carabidae: Bembidiini: Tachyina) from Southeastern China with a New Key and Analysis of Phylogenetic Relationships among Species of the Subgenus. In: Zamotajlov A, Sciaky R (Eds) *Advances in carabidology (Papers dedicated to the memory of Prof. Oleg L. Kryzhanovskij)*. MUISO publications, Krasnodar, 183–194.
 139. Erwin TL (2000) Arboreal beetles of Neotropical Forests: *Agra* Fabricius, a taxonomic supplement for the *platyscelis* group with new species and distribution records (Coleoptera: Carabidae, Lebiini, Agrina). *The Coleopterists Bulletin* 54(1): 90–119. doi: 10.1649/0010-065X(2000)054[0090:ABONFA]2.0.CO;2
 140. Erwin TL (2000) Arboreal beetles of Neotropical Forests: Taxonomic supplement for the *Agra virgata* and *obausi* groups with a new species and additional distribution records (Coleoptera: Carabidae). *The Coleopterists Bulletin* 54(2): 251–262. doi: 10.1649/0010-065X(2000)054[0251:ABONFT]2.0.CO;2
 141. Erwin TL, Johnson PJ (2000) Naming species, a new paradigm for crisis management in taxonomy: Rapid journal validation of scientific names enhanced with more complete descriptions on the internet. *The Coleopterists Bulletin* 54(3): 269–278. doi: 10.1649/0010-065X(2000)054[0269:NSANPF]2.0.CO;2

142. Erwin TL (2000) A new genus and species of Lachnophorini and two new species of Lebiini from Costa Rica (Coleoptera: Carabidae). *The Coleopterists Bulletin* 54(3): 279–283. doi: 10.1649/0010-065X(2000)054[0279:ANGASO]2.0.CO;2
143. Erwin TL (2000) Lumpers and Splitters. *Whole Earth Magazine*. Fall, 2000, 45–46.
144. Erwin TL (2000) Typecast: The Codes of Nomenclature. *Whole Earth Magazine*. Fall, 2000, 47.
145. Erwin TL (2001) Forest Canopies, Animal Diversity. In: Levin S (Ed.) *Encyclopedia of Biodiversity*, Volume 3. Academic Press, 19–25.
146. Erwin TL (2001) Timothy Swanson, 1997. Global Action for Biodiversity, An International Framework for implementing the convention on biological diversity. Earthscan Publications Ltd., London, 191 pp. ISBN: 1 85383 358 4. *The Quarterly Review of Biology* (December, 2001). [Review]
147. Erwin TL (2001) A Taxonomist's Vision: Knowing all Earth's species (Biodiversity and complementarity underpinning conservation strategies). *Proceedings of the Annual Meeting of the Bahamian Natural History Field Station, San Salvador, Bahamas*. [Abstract]
148. Arndt E, Kimse S, Erwin TL (2001) Arboreal beetles of Neotropical forests: *Agra Fabricius*, larval descriptions with notes on natural history and behaviour (Coleoptera, Carabidae, Lebiini, Agrina). *The Coleopterists Bulletin* 55(3): 297–311. doi: 10.1649/0010-065X(2001)055[0297:ABONFA]2.0.CO;2
149. Lucky A, Erwin TL, Witman JD (2002) Temporal and spatial diversity and distribution of arboreal Carabidae (Coleoptera) in a western Amazonian rain forest. *Biotropica* 34(3): 376–386. doi: 10.1111/j.1744-7429.2002.tb00551.x
150. Erwin TL (2002) The Beetle Family Carabidae of Costa Rica: Twenty-nine new species of Costa Rican *Agra Fabricius* 1801 (Coleoptera: Carabidae, Lebiini, Agrina). *Zootaxa* 119: 1–68.
151. Feria ATP, Balta K, Erwin TL (2002) Efecto del volumen de agua sobre la riqueza de invertebrados presente en los internodos del bambu *Guadua weberbaueri*. *Ecología de Ecosistemas Amazónicos* 13: 117–122.
152. Alvarez M, Balta K, Campos L, del Aguila C, Feria TP, Nolivos L, Erwin TL (2002) ¿Qué hay mas allá del orificio?: riqueza y abundancia de los insectos acuáticos presentes en los internodos del bambú *Guadua weberbaueri*. *Ecología de Ecosistemas Amazónicos* 13: 88–91.
153. Phillips OL, Vásquez-Martínez R, Arroyo L, Baker TR, Killeen T, Lewis SL, Malhi Y, Monteagudo-Mendoza A, Neill D, Núñez-Vargas P, Alexiades M, Cerón C, Di Fiore A, Erwin TL, Jardim A, Palacios W, Saldias M, Vinceti B (2002) Increasing dominance of large lianas in Amazonian forests. *Nature* 418: 770–774. doi: 10.1038/nature00926
154. Aschero V, Zenteno L, Rios S, Gonzáles C, Achicahuala J, Vargas J, Erwin TL (2003) La misma obra, diferentes actores: Estructura y composición de las comunidades de insectos acuáticos en los [sic] internodos del bambú (*Guadua weberbaueri*). *Ecología de Ecosistemas Amazónicos* 13: 87–90.
155. Delgado C, Costantino M, Curo A, Estrada N, Fagua C, Machuca J, Erwin TL (2003) Especie clave para el establecimiento de fauna acuática en los [sic] internados de bambú: ¿Escarabajo o carpintero? *Ecología de Ecosistemas Amazónicos* 13: 100–102.

156. Erwin TL (2003) Mapping patterns of β -diversity for beetles across the western Amazon Basin: A preliminary case for improving conservation strategies. 84th Annual Meeting of the Pacific Division, AAAS. San Francisco, CA. [Abstract]
157. Erwin TL (2003) The Insects of Hawaii, Volume 16, Hawaiian Carabidae (Coleoptera), Part 1: Introduction and Tribe Platynini, J.K. Liebherr and E.C. Zimmerman, University of Hawai'i Press, Honolulu, 2000, 494 pages, ISBN 0-8248-2356-7, In, Annals of the Entomological Society of America 96(4): 596. [Review]
158. Erwin TL, Medina RF (2003) The Neotropical species *Askalaphium depressum* (Bates): Larval description, first diagnosis and illustrations of immature Ctenodactylini, with natural history notes on the genus and tribe (Coleoptera: Carabidae). Zootaxa 273: 1–15.
159. Curo JL, Espinoza M, Rivera M, Tauro A, Yanez I, Zalamea M, Erwin TL (2004) Efecto del tiempo de establecimiento sobre la composición de comunidades de artrópodos asociados a *Tessaria integrifolia*. Ecología de Ecosistemas Amazónicos, 2004.
160. Phillips OL, Baker TR, Arroyo L, Higuchi N, Killeen TJ, Laurance WF, Lewis SL, Lloyd J, Malhi Y, Monteagudo A, Neill DA, Vargas PN, Silva JNM, Terborgh J, Martinez RV, Alexiades M, Almeida S, Brown S, Chave J, Comiskey JA, Czimczik CI, Di Fiore A, Erwin TL, Kuebler C, Laurance SG, Nascimento HEM, Olivier J, Palacios W, Patiño S, Pitman NCA, Quesada CA, Salidas M, Lezama AT, Vinceti B (2004) Pattern and process in Amazon tree turnover, 1976–2001. Philosophical Transactions of the Royal Society of London B 359: 381–407. doi: 10.1098/rstb.2003.1438
161. Baker TR, Phillips OL, Malhi Y, Almeida S, Arroyo L, Di Fiore A, Erwin TL, Killeen TJ, Laurance SG, Laurance WF, Lewis SL, Lloyd J, Monteagudo A, Neill DA, Patiño S, Pitman NCA, Silva JNM, Martinez RV (2004) Variation in wood density determines spatial patterns in Amazonian forest biomass. Global Change Biology 10: 545–562. doi: 10.1111/j.1365-2486.2004.00751.x
162. Baker TR, Phillips OL, Malhi Y, Almeida S, Arroyo L, Di Fiore A, Erwin TL, Higuchi N, Killeen TJ, Laurance SG, Laurance WF, Lewis SL, Monteagudo A, Neill DA, Nunez Vargas P, Pitman NCA, Silva NA, Vasquez Martinez R (2004) Increasing Biomass in Amazonian Forest Plots. Philosophical Transactions of the Royal Society of London 1443: 353–365. doi: 10.1098/rstb.2003.1422
163. Giudice R, Blundo C, Carilla J, Artavia G, Soley F, Erwin TL (2004) Composición de comunidades de artrópodos en tres tipos de vegetación de sucesión ribereña. Ecología de Ecosistemas Amazónicos.
164. Erwin TL (2004) The Beetle Family Carabidae of Costa Rica and Panamá: Descriptions of four new genera and six new species with notes on their way of life (Insecta: Coleoptera). Zootaxa 537: 1–18.
165. Erwin TL, Aschero V (2004) *Cicindis horni* Bruch (Coleoptera: Carabidae, Cicindini): The Fairy Shrimp Hunting Beetle, its way of life on the Salinas Grandes of Argentina. Zootaxa 553: 1–16.
166. Erwin TL (2004) The Biodiversity Question: How many species of terrestrial arthropods are there? In: Lowman M, Brinker (Eds) Forest Canopies. 2nd Edition, Academic Press, 259–269.

167. Erwin TL (2004) The Beetle Family Carabidae of Costa Rica: The Genera of the Cryptobatina Group of Subtribe Agrina, Tribe Lebiini, with new species and notes on their way of life (Insecta: Coleoptera). *Zootaxa* 662: 1–54.
168. Erwin TL (2004) The Beetle Family Carabidae of Costa Rica: The Genus *Epikastea* Liebke of the Plochonida Group, with new Neotropical species and notes on their way of life (Insecta: Coleoptera, Lebiini, Agrina). *Zootaxa* 790: 1–20.
169. Erwin TL (2005) Artrópodos del dosel en el oeste de la Cuenca del Amazonas. In: Libro de resúmenes, Congreso Argentino de Entomología, 2005, San Miguel de Tucumán, Argentina. [Abstract]
170. Erwin TL (2005) Roy A. Crowson. Founders' Memorial Award: the Entomologist we honor. The 53rd Annual Meeting of the Entomological Society of America, Ft. Lauderdale, Program Booklet, 15–16. [Popular article]
171. Erwin TL, Pimienta MC, Murillo OE, Aschero V (2005) Mapping patterns of β -diversity for beetles across the western Amazon Basin: A preliminary case for improving conservation strategies. *Proceedings of the California Academy of Sciences*, ser. 4, 56(Suppl. I) No. 7: 72–85.
172. Phillips OL, Baker TR, Arroyo L, Higuchi N, Killeen TJ, Laurance WF, Lewis SL, Lloyd J, Malhi Y, Monteagudo A, Neill DA, Núñez-Vargas P, Natalino J, Silva JNM, Terborgh J, Vásquez-Martínez R, Alexiades M, Almeida S, Brown S, Chave J, Comiskey JA, Czimczik CI, Di Fiore A, Erwin TL, Kuebler C, Laurance SG, Nascimento HEM, Olivier J, Palacios W, Patiño S, Pitman NCA, Quesada CA, Salidas M, Lezama AT, Vinceti B (2005) Late twentieth-century patterns and trends in Amazon tree turnover. In: Yadvinders M, Oliver OL (Eds) *Tropical Forests & Global Atmospheric Change*. Oxford University Press, Oxford, 107–128. doi: 10.1093/acprof:oso/9780198567066.003.0010
173. Baker TR, Phillips OL, Malhi Y, Almeida S, Arroyo L, Di Fiore A, Erwin TL, Higuchi N, Killeen TJ, Laurance SG, Laurance WF, Lewis SL, Monteagudo A, Neill DA, Núñez-Vargas P, Pitman NCA, Natalino J, Silva M, Vásquez-Martínez R (2005) Late twentieth-century trends in the biomass of Amazonian forest plots. In: Yadvinders M, Oliver OL (Eds) *Tropical Forests & Global Atmospheric Change*. Oxford University Press, Oxford, 129–141. doi: 10.1093/acprof:oso/9780198567066.003.0011
174. Erwin TL (2006) Monitoring changes in canopy arthropod populations through time in the western Amazon Basin, Yasuni area, Ecuador. Joint Meeting of the Entomological Society of Canada and the Société d'entomologie du Québec, Montreal, Canada, November 2006. [Abstract]
175. Erwin TL (2006) Anderson, A.B. & Jenkins, C.N., 2006. Applying Nature's Design: Corridors as a strategy for biodiversity conservation. Columbia University Press, New York. 231p. \$74.50 (USA), £34.50 (Britain). In: *The Quarterly Review of Biology* 66(2): 300. [Review]
176. Erwin TL (2007) A review of the Western Hemisphere Pseudomorhini (Coleoptera: Carabidae). XIII European Carabidologists Meeting, Blagoevgrad, Bulgaria, Abstract Volume and Programme, August 20–24, 2007. [Abstract]
177. Erwin TL, Moore W (2007) The Beetle Family Carabidae of Costa Rica: The Genus *Moriosomus* Motschulsky with a new Neotropical species and notes on their way of life (Insecta: Coleoptera, Carabidae, Moronini). *Zootaxa* 1438: 49–63.

178. Steiner WE Jr, Erwin TL, Ward R (2007) *Phloeoxena signata* (Dejean): A northern range extension to Maryland and Tennessee, USA, and the first record for Costa Rica (Coleoptera: Carabidae). The Coleopterists Bulletin 61(2): 224–226. doi: 10.1649/0010-065X(2007)61[224:PSDNRE]2.0.CO;2
179. Erwin TL, Kavanaugh DH (2007) Studies of the Subtribe Tachyina (Coleoptera: Carabidae: Bembidiini). Supplement E: A revision of Genus *Costitachys* Erwin 1974. Proceedings of the California Academy of Sciences, ser. 4, 58, No. 13–22: 331–338.
180. Erwin TL (2007) Xenaroswellanini, *Xenaroswelliana deltaquadrant*, New Tribe, New Genus, and New Species from the Cerrado of Estado de Goiás, Brasil (Insecta: Coleoptera: Carabidae). Proceedings of the California Academy of Sciences, ser. 4, 58, No.27: 575–581.
181. Erwin TL (2007) Forest Canopies, Animal Diversity. In: Levin S (Ed.) Encyclopedia of Biodiversity, Volume 3. Academic Press, 1–7. [updated and revised, see # 148] doi: 10.1016/B0-12-226865-2/00125-5
182. Erwin TL (2007) A Treatise on the Western Hemisphere Caraboidea (Coleoptera): Their classification, distributions, and ways of life. Volume I (Trachypachidae, Carabidae – Nebriiformes 1). Pensoft, Sofia-Moscow, 323 pp.
183. Erwin TL (2008) A review of *Gallerucidia* Chaudoir (Lebiini: Gallerucidiina): their occurrences, ways of life and another genus record for Costa Rica. Annals of the Carnegie Museum 77(1): 135–146. doi: 10.2992/0097-4463-77.1.135
184. Sallenave S, Erwin TL, Roig-Juñent S (2008) *Argentinatachoides*, a new genus from Argentina putatively related to the Australian-Tasmanian *Tasmanitachoides* Erwin 1972 (Coleoptera: Carabidae: Bembidiini). Annals of the Carnegie Museum 77(1): 7–12. doi: 10.2992/0097-4463-77.1.7
185. Will WW, Erwin TL, Maddison DR, Liebherr JK (2008) Contributions to carabidology: A celebration of Professor George E. Ball's 80th birthday, pp. v-vi. In: Liebherr JK, Rawlins JE (Eds) Contributions to carabidology: A celebration of Professor George E. Ball's 80th birthday. Annals of Carnegie Museum 77(1): 1–242. [Forward]
186. Penev L, Erwin TL, Assmann T (2008) Preface. In: Penev L, Erwin TL, Assmann T (Eds) Back to the Roots and back to the future: towards a new synthesis between taxonomic, ecological, and biogeographical approaches in carabidology. Proceedings of the XIII European Carabidologists Meeting, Blagoevgrad, August 20–24, 2007. Pensoft Publishers, Sofia, 11–21.
187. Erwin TL, Geraci CJ (2008) New genera of Western Hemisphere Pseudomorphini (Insecta: Coleoptera, Carabidae). In: Penev L, Erwin T, Assmann T (Eds) Back to the Roots and back to the future: towards a new synthesis between taxonomic, ecological, and biogeographical approaches in carabidology. Proceedings of the XIII European Carabidologists Meeting, Blagoevgrad, August 20–24, 2007. Pensoft Publishers, Sofia, 77–100.
188. Erwin TL, Pearson DL (2008) A Treatise on the Western Hemisphere Caraboidea (Coleoptera): Their classification, distributions, and ways of life Volume II (Carabidae – NEBRIIFORMES PART 2). Pensoft, Sofia-Moscow, 400 pp.
189. Erwin TL, Geraci CJ, Aschero V (2008) Road-building and their use in the western Amazon Basin: Part 1. Impacting the rainforest and its Entomofauna, or not? In: Symposium Program XXIII International Congress of Entomology Symposium 4.5: Eco-

- logical and Conservation Implications of Linkage Between Arthropod Biodiversity and Forestry Practices. [Abstract]
190. Geraci CJ, Erwin TL, Aschero V (2008) Road-building and their use in the western Amazon Basin: Part 2. Employing data from applied conservation research to address basic questions about species richness patterns of Neotropical Mordellidae (Coleoptera). In: Symposium Program XXIII International Congress of Entomology Symposium 4.5: Ecological and Conservation Implications of Linkage Between Arthropod Biodiversity and Forestry Practices. [Abstract]
 191. Veijalainen A, Sääksjärvi I, Erwin TL (2008) Amazonian rainforest canopies reveal many new species of Ichneumonidae (Hymenoptera). SEBDEM 2008. [Abstract]
 192. Penev L, Erwin T, Thompson FC, Sues H, Engel M, Agosti D, Pyle R, Ivie M, Assmann T, Henry T, Miller J, Casale A, Lourenço W, Golovatch S, Fagerholm H, Taiti S, Alonso-Zarazaga M (2008) ZooKeys, unlocking Earth's incredible biodiversity and building a sustainable bridge into the public domain: From "print-based" to "web-based" taxonomy, systematics, and natural history. ZooKeys Editorial Opening Paper. ZooKeys 1: 1–7. doi: 10.3897/zookeys.1.11
 193. Penev L, Erwin T, Assmann T (Eds) (2008) Back to the Roots and back to the future: towards a new synthesis between taxonomic, ecological, and biogeographical approaches in carabidology. Proceedings of the XIII European Carabidologists Meeting, Blagoevgrad, August 20–24, 2007. Pensoft Publishers, Sofia, 509 pp.
 194. Baker TR, Phillips OL, Laurance WF, Pitman NCA, Almeida S, Arroyo L, DiFiore A, Erwin T, Higuchi N, Killeen TJ, Laurance SG, Nascimento H, Monteagudo A, Neill DA, Silva JN, Malhi MY, Lopez Gonzalez G, Peacock J, Quesada CA, Lewis SL, Lloyd J (2009) Do species traits determine patterns of wood production in Amazonian forests. Biogeosciences Discussions 5: 3593–3621. doi: 10.5194/bgd-5-3593-2008
 195. Phillips OL, Luiz EO, Aragão C, Lewis SL, Fisher JB, Lloyd J, López-González G, Malhi Y, Monteagudo A, Peacock J, Quesada CA, van der Heijden G, Almeida S, Amaral I, Arroyo L, Aymard G, Baker TR, Bánki O, Blanc L, Bonal D, Brando P, Chave J, Alves de Oliveira AC, Cardozo ND, Czimczik CI, Feldpausch TR, Freitas MA, Gloor E, Higuchi N, Jiménez E, Lloyd L, Meir P, Mendoza C, Morel A, Neill DA, Nepstad D, Patiño S, Peñuela MC, Prieto A, Ramírez F, Schwarz M, Silva J, Silveira M, Thomas AS, ter Steege H, Stropp J, Vásquez R, Zelazowski P, Dávila EA, Andelman S, Andrade A, Chao K, Erwin T, Di Fiore A, Honorio CE, Keeling H, Killeen TJ, Laurance WF, Cruz AP, Pitman NCA, Vargas PN, Ramírez-Angulo H, Rudas A, Salamão R, Silva N, Terborgh J, Torres-Lezama A (2009) Drought Sensitivity of the Amazon Rainforest. Science 323: 1344–1347. doi: 10.1126/science.1164033
 196. Spanish version of 195.
 197. Quesada CA, Lloyd J, Schwarz M, de Baker TR, Phillips OL, Patiño S, Czimczik C, Hodnett MG, Herrera R, Arneeth A, Lloyd G, Malhi Y, Dezzio N, Luizão FJ, Santos AJB, Schmerier J, Arroyo L, Silveira M, Filho NP, Jimenez EM, Paiva R, Vieira I, Neill DA, Silva N, Peñuela MC, Monteagudo A, Vásquez R, Prieto A, Rudas A, Almeida S, Higuchi N, Lezama AT, López-González G, Peacock J, Fyllas NM, Davila EA, Erwin T, Di Fiore A, Chao KJ, Honorio E, Killeen T, Cruz AP, Pitman N, Vargas PN, Salomão

- R, Terborgh J, Ramirez H (2009) Regional and large-scale patterns in Amazon forest structure and function are mediated by variations in soil physical and chemical properties. *Biogeosciences Discussions* 6: 3993–4057. doi: 10.5194/bgd-6-3993-2009
198. Erwin TL, Geraci CJ (2009) Amazonian rainforests and their richness of Coleoptera, a dominant life form in the *Critical Zone* of the Neotropics. In: Footitt R, Adler P (Eds) *Insect Biodiversity: Science and Society*. Blackwell Publishing, New Jersey, 49–67. doi: 10.1002/9781444308211.ch4
199. Penev L, Erwin T, Miller J, Chavan V, Moritz T, Griswold C (2009) Forum paper: Publication and dissemination of datasets in taxonomy: ZooKeys working example. *ZooKeys* 11: 1–8. doi: 10.3897/zookeys.11.210
200. Frank JH, Erwin TL, Hemenway RC (2009) Economically Beneficial Ground Beetles. The specialized predators *Pheropsophus aequinoctialis* (L.) and *Stenaptinus jessoensis* (Morawitz): Their laboratory behavior and descriptions of immature stages (Coleoptera, Carabidae, Brachininae). *ZooKeys* 14: 1–36. doi: 10.3897/zookeys.14.188
201. Penev L, Sharkey M, Erwin T, van Noort S, Buffington M, Selmann K, Johnson N, Taylor M, Thompson FC, Dallwitz MJ (2009) Data publication and dissemination of interactive keys under the open access model: ZooKeys working example. *ZooKeys* 21: 1–17. doi: 10.3897/zookeys.21.274
202. Gloor M, Phillips OL, Lloyd JJ, Lewis SL, Malhi Y, Baker TR, Lopez-Gonzalez G, Peacock J, Almeida S, Alves de Oliveira AC, Alvarez E, Amaral I, Arroyo L, Aymard G, Banki O, Blanc L, Bonal D, Brando P, Chao K, Chave J, Davila N, Erwin T, Silva J, Di Fiore A, Feldpausch TR, Freitas A, Herrera R, Higuchi N, Honorio E, Jimenez E, Killeen T, Laurance W, Mendoza C, Monteagudo A, Andrade A, Neill D, Nepstad D, Nunez Vargas P, Penuela MC, Pena Cruz A, Prieto A, Pitman N, Quesada C, Salomao R, Silveira M, Schwarz M, Stropp J, Ramirez F, Ramirez H, Rudas A, ter Steege H, Silva N, Torres A, Terborgh J, Vasquez R, van der Heijden G (2009) Does the Disturbance Hypothesis Explain the Biomass Increase in Basin-Wide Amazon Forest Plot Data? *Global Change Biology* 15(10): 2418–2430. doi: 10.1111/j.1365-2486.2009.01891.x
203. Klaunder B, Schmidt J, Erwin TL (Eds) (2010) *Contributions to Biology and Systematics of Beetles*. *Entomologische Blätter für Biologie und Systematik der Käfer* 106, 441 pp.
204. Penev L, Roberts D, Smith VS, Agosti D, Erwin TL (2010) Taxonomy shifts up a gear: New publishing tools to accelerate biodiversity research. *ZooKeys* 50: 1–4. doi: 10.3897/zookeys.50.543
205. Penev L, Agosti D, Georgiev T, Catapano T, Miller J, Blagoderov V, Roberts D, Smith VS, Brake I, Rycroft S, Scott B, Johnson NF, Morris RA, Sautter G, Chavan V, Robertson T, Remsen D, Stoev P, Parr C, Knapp S, Kress WJ, Christian TF, Erwin T (2010) Semantic tagging of and semantic enhancements to systematics papers: ZooKeys working examples. *ZooKeys* 50: 1–16. doi: 10.3897/zookeys.50.538
206. Penev L, Roberts D, Smith VS, Agosti D, Erwin T (Eds) (2010) Taxonomy shifts up a gear: New publishing tools to accelerate biodiversity research. *ZooKeys* 50, 126 pp.
207. Liebherr JK, Erwin TL, Ball GE (2010) On the Provenance of Boheman's "Eugenies resa" Carabidae (Coleoptera) allegedly described from Hawaii. *The Coleopterists Bulletin* 64(3): 221–229. doi: 10.1649/0010-065X-64.3.221.7

208. White WH, Erwin TL, Viator BJ (2010) *Leptotrachelus dorsalis*: the Prodigal Son Returns. Sugar Journal 73(6): 22. [Popular article]
209. Pearson DL, Hamilton AL, Erwin TL (2011) Recovery Plan for the Endangered Taxonomy Profession. Bioscience 61(1): 58–63. doi: 10.1525/bio.2011.61.1.11
210. Adis J, Erwin TL, Battirola LD, Ketelhut SM (2010) The importance of floodplain forests for animal biodiversity: Beetles in canopies of floodplain and upland forests. In: Junk WJ, Fernandez Piedade MT, Wittmann F, Schöngart J, Parolin P (Eds) Amazonian Floodplain Forests. Ecophysiology, Biodiversity and Sustainable Management. Springer, Dordrecht, Heidelberg, London, New York, 313–328. doi: 10.1007/978-90-481-8725-6_16
211. Erwin TL (2010) *Agra*, arboreal beetles of Neotropical forests: *pusilla* group and *piranha* group systematics and notes on their ways of life (Coleoptera, Carabidae, Lebiini, Agrina). ZooKeys 66: 1–28. doi: 10.3897/zookeys.66.684
212. Tittensor DP, Bouchet P, Mora C, Berghe EV, Erwin T, Grassle JF, Jetz W, Lotze HK, Ricard D, Worm B (2010) Quantifying Global Marine Species Richness, Diversity, and Discovery, Eos Trans. AGU, 91(26), Ocean Sci. Meet. Suppl., Abstract BO34C-01. [Abstract]
213. Erwin TL, Toledano L, Maddison DR (2010) New enigmatic species of ground beetles from stream margins and scree in the Andes of South America (Carabidae: Trechitae: *Andinodontis* gen. n.). In: Klaudnitzer B, Schmidt J, Erwin TL (Eds) (2010) Contributions to Biology and Systematics of Beetles. Entomologische Blätter für Biologie und Systematik der Käfer 106: 73–88.
214. Penev L, Hagedorn G, Mietchen D, Georgiev T, Stoev P, Sautter G, Agosti D, Plank A, Balke M, Hendrich L, Erwin T (2011) Interlinking journal and wiki publications through joint citation: Working examples from ZooKeys and Plazi on Species-ID. ZooKeys 90: 1–12. doi: 10.3897/zookeys.90.1369
215. Erwin TL (Ed.) (2011) A Treatise on the Western Hemisphere Caraboidea (Coleoptera): Their classification, distributions, and ways of life Volume III (Carabidae – LOXOMERIFORMES, MELAENIFORMES). Pensoft, Sofia-Moscow, 412 pp.
216. Erwin TL (Ed.) (2011) Proceedings of a symposium honoring the careers of Ross and Joyce Bell and their contributions to scientific work. Burlington, Vermont, 12–15 June 2010. ZooKeys 147, 689 pp.
217. Cardoso P, Erwin TL, Borgas AV, New TR (2011) The seven impediments in invertebrate conservation and how to overcome them. Biological Conservation 144: 2647–2655. doi: 10.1016/j.biocon.2011.07.024
218. Erwin TL (2011) *Halocoryza* Alluaud 1919, sea-side beetles of the Atlantic, Pacific, and Indian Oceans: a generic synopsis and description of a remarkable new species from Baja California (Coleoptera, Carabidae, Scaritini, Clivinina). ZooKeys 127: 1–13. doi: 10.3897/zookeys.127.1748
219. Mawdsley JR, Erwin TL, Sithole H, Mawdsley JL, Mawdsley AS (2011) The genus *Anthia* Weber in the Republic of South Africa: Identification, distribution, biogeography, and behavior (Coleoptera, Carabidae). ZooKeys 143: 47–81. doi: 10.3897/zookeys.143.2075
220. Erwin TL (2011) Rainforest understory beetles of the Neotropics, *Mizotrechus* Bates 1871, a generic synopsis with descriptions of new species from Central America and

- northern South America (Coleoptera, Carabidae, Perigonini). *ZooKeys* 145: 79–128. doi: 10.3897/zookeys.145.2274
221. Maveety SA, Browne RA, Erwin TL (2011) Carabidae diversity along an altitudinal gradient in a Peruvian cloud forest (Coleoptera). In: Erwin TL (Ed.) Proceedings of a symposium honoring the careers of Ross and Joyce Bell and their contributions to scientific work. Burlington, Vermont, 12–15 June 2010. *ZooKeys* 147: 651–666. doi: 10.3897/zookeys.147.2047
222. Erwin TL, Ball GE (2011) *Badister* Clairville 1806: A new species and new continental record for the genus in Amazonian Perú (Coleoptera: Carabidae: Licinini). In: Erwin TL (Ed.) Proceedings of a symposium honoring the careers of Ross and Joyce Bell and their contributions to scientific work. Burlington, Vermont, 12–15 June 2010. *ZooKeys* 147: 399–417. doi: 10.3897/zookeys.147.2117
223. Erwin T, Stoev P, Georgiev T, Penev L (2011) *ZooKeys* 150: Three and a half years of innovative publishing and growth. In: Smith V, Penev L (Eds) e-Infrastructures for data publishing in biodiversity science. *ZooKeys* 150: 5–14. doi: 10.3897/zookeys.150.2431
224. Penev L, Stoev P, Kress J, Knapp S, Erwin T (2011) Cybertaxonomy, semantic markup and semantic enhancements: The PhytoKeys and ZooKeys experience. *South African Journal of Botany* 77(2): 560. [Abstract]
225. Garcia-Robledo C, Kress WJ, Erickson DL, Erwin TL, Staines CL (2011) Reconstructing Plant-Herbivore interactions to test hypotheses of cascades of extinction due to global climate change. 96th ESA (Ecological Society of America) Annual Meeting (August 7–12, 2011). [Abstract]
226. Veijalainen A, Sääksjärvi IE, Erwin TL, Gómez IC, Longino JT (2012) Subfamily composition of Ichneumonidae (Hymenoptera) from western Amazonia: Insights into diversity of tropical parasitoid wasps. *Insect Conservation and Diversity*. doi: 10.1111/j.1752-4598.2012.00185.x
227. Garcia-Robledo C, Kress WJ, Staines CL, Erwin TL, Erickson DL (2012) Host plant extinctions and insect herbivore extinctions in a tropical elevational gradient. ATBC 2012 Conference in Brazil. [Abstract]
228. Mawdsley JR, Erwin TL, Sithole H, Mawdsley AS (2012) A synopsis of the genus *Cypholoba* Chaudoir (Coleoptera, Carabidae, Anthiini) known to occur in the Republic of South Africa. *ZooKeys* 181: 23–43. doi: 10.3897/zookeys.181.2984
229. Feldpausch TR, Lloyd J, Lewis SL, Brienens RJW, Gloor E, Monteagudo Mendoza A, Lopez-Gonzalez G, Banin L, Abu Salim K, Affum-Baffoe K, Alexiades M, Almeida S, Amaral I, Andrade A, Aragão LEOC, Araujo Murakami A, Arets EJMM, Arroyo L, Aymard CGA, Baker TR, Bánki OS, Berry NJ, Cardozo N, Chave J, Comiskey JA, Dávila EA, de Oliveira A, Difiore A, Djagbletey G, Domingues TF, Erwin TL, Fearnside PM, França MB, Freitas MA, Higuchi N, Honorio CE, Iida Y, Jiménez E, Kassim AR, Killeen TJ, Laurance WF, Lovett JC, Malhi Y, Marimon BS, Marimon-Junior BH, Lenza E, Marshall AR, Mendoza C, Metcalfe DJ, Mitchard ETA, Nelson BW, Nilus R, Nogueira EM, Parada A, Peh KS-H, Pena Cruz A, Peñuela MC, Pitman NCA, Prieto A, Quesada CA, Ramírez F, Ramírez-Angulo H, Reitsma JM, Rudas A, Saiz G, Salomão RP, Schwarz M, Silva N, Silva-Espejo JE, Silveira M, Sonké B, Stropp J, Taedoumug HE,

- Tan S, Ter Steege H, Terborgh J, Torello-Raventos M, van der Heijden GMF, Vásquez R, Vilanova E, Vos V, White L, Wilcock S, Woell H, Phillips OL (2012) Tree height integrated into pan-tropical forest biomass estimates. *Biogeosciences Discussions* 9: 2567–2622. doi: 10.5194/bgd-9-2567-2012
230. Erwin TL, White WH (2012) The Nearctic-Caribbean species *Leptotrachelus dorsalis* (Fabricius, 1801): Larval descriptions with a diagnosis of immature Ctenodactylini and natural history notes on the genus and tribe (Coleoptera: Carabidae). *ZooKeys* 194: 17–42. doi: 10.3897/zookeys.194.3308
231. Quesada CA, Phillips OL, Schwarz M, Czimczik CI, Baker TR, Patiño S, Fyllas NM, Hodnett MG, Herrera R, Almeida S, Dávila EA, Arneeth A, Arroyo L, Chao KJ, Dezzio N, Erwin TL, di Fiore A, Higuchi N, Coronado EH, Jimenez EM, Killeen T, Lezama AT, Lloyd G, López-González G, Luizão FJ, Malhi Y, Monteagudo A, Neill DA, Vargas PN, Paiva R, Peacock J, Peñuela MC, Cruz AP, Pitman N, Filho NP, Prieto A, Ramírez H, Rudas A, Salomão R, Santos AJB, Schmerler J, Silva N, Silveira M, Vásquez R, Vieira I, Terborgh J, Lloyd J (2012) Basin-wide variations in Amazon forest structure and function are mediated by both soils and climate. *Biogeosciences* 9: 2203–2246. doi: 10.5194/bg-9-2203-2012
232. Penev L, Cerretti P, Tschorsnig H-P, Lopresti M, Giovanni F, Georgiev T, Stoev P, Erwin T (2012) Publishing online identification keys in the form of scholarly papers. *ZooKeys* 205: 1–3. doi: 10.3897/zookeys.205.3581 [Editorial]
233. White WH, Erwin TL (2012) *Leptotrachelus dorsalis* (Coleoptera: Carabidae): A candidate biological agent of the Sugarcane Borer in Louisiana. *The Florida Entomologist* 95(2): 261–267. doi: 10.1653/024.095.0203
234. Feldpausch TR, Lloyd J, Lewis SL, Brienens RJW, Gloor E, Mendoza AM, Lopez-Gonzalez G, Banin L, Salim AK, Affum-Baffoe K, Alexiades M, Almeida S, Amaral I, Andrade A, Aragão LEOC, Murakami AA, Arets EJMM, Arroyo L, Aymard CGA, Baker TR, Bánki OS, Berry NJ, Cardozo N, Chave J, Comiskey JA, Dávila EA, de Oliveira A, Difiore A, Djagbletey G, Domingues TF, Erwin TL, Fearnside PM, França MB, Freitas MA, Higuchi N, Honorio CE, Iida Y, Jiménez E, Kassim AR, Killeen TJ, Laurance WF, Lovett JC, Malhi Y, Marimon BS, Marimon-Junior BH, Lenza E, Marshall AR, Mendoza C, Metcalfe DJ, Mitchard ETA, Nelson BW, Nilus R, Nogueira EM, Parada A, Peh KS-H, Cruz AP, Peñuela MC, Pitman NCA, Prieto A, Quesada CA, Ramírez F, Ramírez-Angulo H, Reitsma JM, Rudas A, Saiz G, Salomão RP, Schwarz M, Silva N, Silva-Espejo JE, Silveira M, Sonké B, Stropp J, Taedoung HE, Tan S, Ter Steege H, Terborgh J, Torello-Raventos M, van der Heijden GMF, Vásquez R, Vilanova E, Vos V, White L, Wilcock S, Woell H, Phillips OL (2012) Tree height integrated into pan-tropical forest biomass estimates. *Biogeosciences Discussions* 9: 3381–3403. doi: 10.5194/bg-9-3381-2012
235. Erwin TL, Ball GE (2012) *Hybopteroides*, a new genus in the Cryptobatida group of subtribe Agrina, with three new species and notes on their way of life (Insecta: Coleoptera, Carabidae, Lebiini). *Pan-Pacific Entomologist* 88(2): 188–201. doi: 10.3956/2012-29.1
236. Erwin TL (2012) Documenting biodiversity at different scales. In: Swing K, Oxford P (Eds) *Yasuni Tiputini & the web of life*. Ingwe Press, Quito, 231.

237. Erwin TL, Micheli C, Hevel G (2012) Neotropical beetles of Guyane: Genera of the family Carabidae (Coleoptera) with notes on species richness currently known from the literature and recent collections. *Le Coléoptériste* 5: 1–88.
238. Veijalainen A, Wahlberg N, Broad GR, Erwin TL, Longino JT, Sääksjärvi IE (2012) Unprecedented ichneumonid parasitoid wasp diversity in tropical forests. *Proceedings of the Royal Society B* 1748: 4694–4698. doi: 10.1098/rspb.2012.1664
239. Josephine JR, Jose LF-T, Smith MA, Janzen DH, Hallwachs W, Erwin TL, Whitfield JB (2012) Extrapolations from field studies and known faunas converge on dramatically increased estimates of global microgastrine parasitoid wasp species richness (Hymenoptera: Braconidae). *Insect Conservation and Diversity*. doi: 10.1111/icad.12003
240. Erwin TL, Penev L, Stoev P, Georgiev T (2012) Accelerating innovative publishing in taxonomy and systematics: 250 issues of ZooKeys. *ZooKeys* 251: 1–10. doi: 10.3897/zookeys.251.4516
241. García-Robledo C, Erickson DL, Staines CL, Erwin TL, Kress WJ (2013) Tropical Plant–Herbivore Networks: Reconstructing Species Interactions Using DNA Barcodes. *PLoS ONE* 8(1): 1–10. doi: 10.1371/journal.pone.0052967.
242. Erwin TL (2013) Book Review: *Flies – The Natural History and Diversity of Diptera*. S. A. Marshall, Firefly Books Ltd., Richmond, Ontario, Canada, 616 pp. *ZooKeys* 261: 85–86. doi: 10.3897/zookeys.261.4628
243. Erwin TL (2013) Forest Canopies, Animal Diversity. In: Levin SA (Ed.) *Encyclopedia of Biodiversity*, second edition, Volume 3. Academic Press, Waltham, MA, 511–515. doi: 10.1016/b978-0-12-384719-5.00057-5
244. García-Robledo C, Kuprewicz EK, Staines CL, Kress WJ, Erwin TL (2013) Using a comprehensive DNA barcode library to detect novel egg and larval host plant associations in *Cephaloleia* rolled-leaf beetles (Coleoptera: Chrysomelidae). *Zoological Journal of the Linnean Society*. doi: 10.1111/bij.12115
245. García-Robledo C, Kress WJ, Staines CL, Erwin TL, Kuprewicz EK (2013) Host plant extinctions and insect herbivore co-extinctions in a tropical elevational gradient: Diet and thermal specialization of insect herbivores at high elevations increase co-extinction rates. *New Frontiers in Tropical Biology: The Next 50 Years (A Joint Meeting of ATBC and OTS)*. June, Costa Rica. [Abstract]
246. Janovska A, Anichtchenko AV, Erwin T (2013) Significant new taxonomic tool for Carabidae (Insecta: Coleoptera): endophallus inflation methods revised. *Caucasian Entomological Bulletin* 9(1): 39–42.
247. Stoev P, Penev L, Akkari N, Cheung DK-B, Enghoff H, Brunke A, de Souza CM, Pape T, Mietchen D, Erwin T (2013) Revolving images and multi-image keys open new horizons in descriptive taxonomy: ZooKeys working examples. *ZooKeys* 328: 1–3. doi: 10.3897/zookeys.328.6171
248. Erwin TL (2013) Beetles that live with ants (Carabidae, Pseudomorhini): A remarkable new genus and species from Guyane (French Guiana), *Guyanemorpha spectabilis* gen. n, sp. n. *ZooKeys* 358: 11–23. doi: 10.3897/zookeys.358.6298
249. Erwin TL, Amundson L (2013) Beetles that live with ants (Carabidae, Pseudomorhini, *Pseudomorpha* Kirby 1825): A revision of the *santarita* species group. *ZooKeys* 362: 29–54. doi: 10.3897/zookeys.362.6300

250. Maveety SA, Browne RA, Erwin TL (2014) Carabid beetle diversity and composition as related to altitude and seasonality in the Andean forests. *Studies on Neotropical Fauna and Environment* 48(3): 165–174. doi: 10.1080/01650521.2013.873266
251. Talbot J, Lewis SL, Lopez-Gonzalez G, Brienen RJW, Monteagudo A, Baker TR, Feldpausch TR, Malhi Y, Vanderwel M, Murakami AA, Arroyo LP, Chao K-J, Erwin TL, van der Heijden G, Keeling H, Killeen T, Neill D, Vargas PN, Gutierrez AGP, Pitman N, Quesada CA, Silveira M, Stropp J, Phillips OL (2014) Methods to estimate above-ground wood productivity from long-term forest inventory plots. *Forest Ecology and Management* 320: 30–38. doi: 10.1016/j.foreco.2014.02.021
252. Mitchard ETA, Feldpausch TR, Brienen RV, Lopez-Gonzalez G, Monteagudo A, Malhi Y, Baker TR, Lewis SL, Lloyd J, Quesada CA, Gloor M, ter Steege H, Meir P, Alvarez EV, Araujo-Murakami A, Arroyo L, Aymard GA, Banki O, Bonal D, Brown S, Cerón CE, Moscoso VC, Chave J, Comiskey JM, Medina MC, Costa FRC, Cruz AP, Cuenca WP, Da Costa L, de Souza PB, Di Fiore A, Domingues T, Erwin TL, Espejo JE, Ferreira L, Germaine A, Higuchi N, Coronado ENH, Levis C, Killeen TJ, Laurance WF, Magnusson WE, Marimon BS, Marimon Junior BH, Nascimento MT, Neill D, Peñuela MC, Pitman N, Peres CA, Polo ICG, Prieto A, Ramirez-Angulo H, Rudas A, Salomao RP, Schiatti J, Silva N, Silveira M, Stropp J, Terborgh J, Thomas RP, Toledo M, Torres-Lezama A, Valenzuela Gamarra L, van Andel TR, van der Heijden GMF, Vargas PN, Vieira ICG, Vilanova-Torre E, Wang O, Zartman CE, Phillips OL (2014) Markedly divergent estimates of Amazon forest carbon density from ground plots and satellites. *Global Ecology and Biogeography*, 1–12. doi: 10.1111/geb.12168
253. Erwin TL, Zamorano LS (2014) A synopsis of the Tribe Lachnophorini, with a new genus of Neotropical distribution and a revision of the Neotropical genus *Asklepia* Liebke 1938 (Insecta: Coleoptera: Carabidae). *ZooKeys* 430: 1–108. doi: 10.3897/zookeys.430.8094
254. Touroult J, Asenjo A, Ballerio A, dos Santos PB, Boilly O, Boucher S, Cassola F, Chassain J, Cline A, Constantin R, Curletti G, Dalens P-H, Degallier N, Dheurle C, Erwin TL, Feer F, de Castro-Guedes CF, Flechtemann C, Gonzales D, Gustafson GT, Herrmann A, Jameson M-L, Leblanc P, Lohez D, Mantilleri A, de Almeida LM, Ríos MAM, Paulmier I, Ponchel Y, Queney P, Rojkoff S, Rheinheimer J, Ribeiro CS, Wachtel F, Yvinec J-H, Witté I, Brûlé S (2014) Combien y-a-t-il d'espèces de Coléoptères en Guyane ? Une première analyse du référentiel TAXREF ACOREP-France : Coléoptères de Guyane. Tome VIII (2014).
255. Brienen RJW, Phillips OL, Feldpausch TR, Gloor E, Baker TR, Lloyd J, Lopez-Gonzalez G, Monteagudo-Mendoza A, Alexiades M, Alvarez-Loayza P, Andrade A, Aragão LEOC, Araujo-Murakami A, Arets EJMM, Aymard CGA, Baraloto C, Barroso J, Bonal D, Boot RGA, Chama V, Chao KJ, Chave J, Comiskey JA, Valverde FC, da Costa L, de Oliveira E, Di Fiore A, Erwin TL, Fauset S, Forsthofer M, Grahame S, Groot N, Herault E, Honorio C, Keeling H, Killeen TJ, Laurance WF, Laurance S, Lewis SL, Licona J, Malhi Y, Marimon BS, Marimon-Junior BH, Neill DA, Nogueira EM, Nunez P, Camacho NCP, Parada A, Pardo G, Peacock J, Pena-Claros, Pickavance GC, Pitman NCA, Poorter L, Prieto A, Quesada CA, Ramirez F, Ramirez-Angulo H, Restrepo Z, Roopsind A, Rudas A, Salomão RP, Schwarz M, Silva N, Silva-Espejo JE, Silveira M, Stropp J, Talbot J, ter Steege H, Teran-Aguilar J, Terborgh J, Thomas-Caesar R, Toledo

- M, Torello-Raventos M, Umetsu RK, Van der Heijden GMF, Van der Hout P, Martinez RV, Vieira I, Vieira SA, Vilanova E, Vos V, Zagt R (2015) A long-term decline of the Amazon forest carbon sink. *Nature* 519: 344–348. doi: 10.1038/nature14283
256. García-Robledo C, Kress WJ, Kuprewicz EK, Erwin TL (2015) DNA barcodes reveal that maximum critical thermal limits of insect herbivores along elevational gradients decrease with elevation: Implications for projected global warming. 6th International Barcode of Life Conference was held from August 18–21, 2015 at the University of Guelph. [Abstract]
257. Erwin T, Stoev P, Georgiev T, Penev L (2015) ZooKeys 500: traditions and innovations hand-in-hand servicing our taxonomic community! *ZooKeys* 500: 1–8. doi: 10.3897/zookeys.500.9844 [Editorial]
258. Fauset S et al. (2015) Hyperdominance in Amazon carbon cycling. *Nature Communications* 7857: 1–9. doi: 10.1038/ncomms7857

List of Newsletter articles and Technical Reports

259. Erwin TL (1989) Sorting tropical forest canopy specimens. *Insect Collection News* 2(1): 8.
260. Erwin TL (1992) ANTSE- A network and tracking system for entomology. *Insect Collection News* 7: 6–7.
261. Erwin TL, Pogue MG (1992) Specimen management: Prep time – Prep costs. *Insect Collection News* 8(1): 11.

Manuscripts in press:

262. Levine NM, Ke Zhang, Longo M, Baccini A, Phillips O, Lewis SL, Alvarez E, De Andrade ACS, Brienen R, Erwin TL, Feldpausch T, Mendoza ALM, Vargas PN, Prieto A, Espejo JES, Yadvinder Malhi, Moorcroft PR (2014 in review) Ecosystem heterogeneity provides resilience against climate tipping points in Amazonia. *Nature*.
263. Carrejo N, Erwin TL (2015 in review) Elateridos de dosel (Coleoptera: Elateridae) de la cuenca amazonica ecuatoriana: descripcion taxonómica y evaluacion de la diversidad espacial y temporal. Bibliotecadigital.univalle.edu.co.
264. Erwin TL, Zamorano LS, Geraci CJ (2015 in press) Amazonian rainforests and their richness of Coleoptera, a dominant life form in the *Critical Zone* of the Neotropics. In: Footitt R, Adler P (Eds) *Insect Biodiversity: Science and Society*, 2nd Edition. Blackwell Publishing, New Jersey.
265. Erwin TL, Micheli CJ, Chaboo CS (2015 in press) Beetles (Coleoptera) of Peru: A survey of the Families. Carabidae. *Journal of the Kansas Entomological Society* 88(2).
266. García-Robledo C, Kuprewicz EK, Kress JW, Staines CL, Erwin TL (2015 in press) Cryptic insect species display limited tolerance to high temperatures across tropical elevational gradients: implications for global warming and species extinction. *PLoS*.

Table 1. List of taxa named after Terry Erwin.

Order	Family	Subfamily (1)	Genus (2)	Species (47)	Subspecies (1)	Specauthor	Specdate	Locality
Coleoptera	Carabidae		<i>Erwiniana</i>			Paulsen & Smith	2003-	Neotropics
Hymenoptera	Dryinidae	Erwininae	<i>Erwinius</i>			Olimi & Guglielmino	2010-	Ecuador
Coleoptera	Carabidae		<i>Abaris</i>	<i>erwini</i>		Will	2002-	Bolivia; Perú
Coleoptera	Carabidae		<i>Anaulacus</i>	<i>erwini</i>		Ball & Shpeley	2002-	Perú
Coleoptera	Carabidae		<i>Anillinus</i>	<i>erwini</i>		Sokolov & Carlton	2004-	USA - NC, VA
Coleoptera	Carabidae		<i>Bembidion</i>	<i>erwini</i>		Perrault	1982-	México - OA
Coleoptera	Carabidae		<i>Calathus</i>	<i>erwini</i>		Ball & Nègre	1972-	México - JA, MH
Coleoptera	Carabidae		<i>Carabus</i>	<i>erwini</i>		Mandl	1975-	
Coleoptera	Carabidae		<i>Catascopus</i>	<i>erwini</i>		Straneo	1994-	
Coleoptera	Carabidae		<i>Clinidium</i>	<i>erwini</i>		Bell & Bell	2009-	Costa Rica
Coleoptera	Carabidae		<i>Coptodera</i>	<i>erwini</i>		Shpeley & Ball	1993-	Perú
Coleoptera	Carabidae		<i>Ctenostoma</i>	<i>erwini</i>		Naviaux	1998-	Panamá
Coleoptera	Carabidae		<i>Ctenostoma</i>	<i>erwini</i>		Naviaux	1998-	Ecuador - Galápagos Islands: Baltra (Seymour), Darwin (Culpepper), Fernandina (Narborough), Floreana, Genovesa (Tower), Pinta (Abingdon), Santa Cruz (Indefatigable), Santa Fé (Barrington), Wolf (Wenman).
Coleoptera	Carabidae		<i>Dyschiriodes</i>	<i>erwini</i>		Bulirsch	2009-	Neotropics
Coleoptera	Carabidae		<i>Dyschirius</i>	<i>erwini</i>		Bulirsch	2009-	Argentina - Santiago del Estero
Coleoptera	Carabidae		<i>Geocharidius</i>	<i>erwini</i>		Sokolov & Kavanagh	2014-	Central America

Order	Family	Subfamily (1)	Genus (2)	Species (47)	Subspecies (1)	Speciauthor	Specdate	Locality
Coleoptera	Carabidae		<i>Eucheila</i>	<i>erwini</i>		Ball and Shpeley	2001-	Perú
Coleoptera	Carabidae		<i>Eurycoleus</i>	<i>erwini</i>		Spheley & Ball	2001-	Costa Rica
Coleoptera	Carabidae		<i>Paratrechus</i>	<i>erwini</i>		Barr	1982-	México – VC
Coleoptera	Carabidae		<i>Tachys</i>	<i>erwini</i>		Reichardt	1976-	Ecuador - Galápagos Islands: Baltra (Seymour), Darwin (Culpepper), Fernandina (Narborough), Floreana, Genovesa (Tower), Pinta (Abingdon), Santa Cruz (Indefatigable), Santa Fé (Barrington), Wolf (Wenman).
Coleoptera	Carabidae		<i>Tetracha</i>	<i>erwini</i>		Naviaux	2010-	Brazil - Roraima
Coleoptera	Carabidae		<i>Trichopstida</i>	<i>erwini</i>		Larochele & Lariviere	2013-	New Zealand
Coleoptera	Carabidae		<i>Phloeoxena</i>	<i>megalops erwini</i>		Ball	1975-	
Coleoptera	Carabidae		<i>Trichopselaphus</i>	<i>erwinorum</i>		Ball	1978-	Costa Rica; Panamá
Araneoidea	Araneidae		<i>Kaira</i>	<i>erwini</i>		Levi	1993-	Peru
Araneoidea	Oonopidae		<i>Gradungulonops</i>	<i>erwini</i>		Grismodo, Izquierdo, Gonzalez & Ramirez	2015-	Neotropics
Araneoidea	Oonopidae		<i>Dysderina</i>	<i>erwini</i>		Plattick, Berniker & Bonaldo	2013-	Neotropics
Araneoidea	Pisauridae		<i>Architis</i>	<i>erwini</i>		Santos	2007-	Neotropics
Coleoptera	Chrysomelidae		<i>Chrysomila</i>	<i>erwini</i>		Salvini, Escalona & Furth	2008-	Peru

Order	Family	Subfamily (1)	Genus (2)	Species (47)	Subspecies (1)	Speciauthor	Specdate	Locality
Coleoptera	Ciidae		<i>Phellinocis</i>	<i>erwini</i>		Lopes-Andrade & Lawrence	2005-	Neotropics
Coleoptera	Cleridae		<i>Enoclerus</i>	<i>erwini</i>		Ekis	1978-	Costa Rica, Panama
Coleoptera	Curculionidae		<i>Ceutorhynchus</i>	<i>erwini</i>		Korotyaev & O'Brien	2008-	USA - CA
Diptera	Aulacigastridae		<i>Aulacigaster</i>	<i>erwini</i>		Rung & Mathis	2011-	Ecuador
Diptera	Clusiidae		<i>Sobarocephala</i>	<i>erwini</i>		Londdale & Marshall	2012-	Neotropics
Diptera	Lauxaniidae		<i>Eurystratiomyia</i>	<i>erwini</i>		Gaimari & Silva	2010-	
Diptera	Tephritidae		<i>Molynocoelia</i>	<i>erwini</i>		Norrbon	2011-	Ecuador
Hemiptera	Cicadellidae		<i>Gabrita</i>	<i>erwini</i>		Nielson	2010-	Neotropics
Hemiptera	Cicadellidae		<i>Daedaloscarta</i>	<i>erwini</i>		Cavichioli & Takiya	2012-	Neotropics
Hemiptera	Cixiidae		<i>Loisirella</i>	<i>erwini</i>		Holzinger, Holzinger & Egger	2013-	Ecuador
Hemiptera	Rhyparochromidae	Rhyparochromidae	<i>Villalobosathignus</i>	<i>erwini</i>		Dellape & Montemayor	2011-	Ecuador
Hymenoptera	Aphelininae		<i>Punkaphytis</i>	<i>erwini</i>		Kim & Heraty	2012-	Neotropics
Hymenoptera	Dryinidae		<i>Detinodryinus</i>	<i>erwini</i>		Olimi	2008-	Neotropics
Hymenoptera	Eucharitidae		<i>Orasema</i>	<i>erwini</i>		Burks, Mortern & Heraty	2015-	Neotropics

Order	Family	Subfamily (1)	Genus (2)	Species (47)	Subspecies (1)	Speci-author	Spec-date	Locality
Hymenoptera	Eurytomidae		<i>Khamul</i>	<i>erwini</i>		Gates	2008-	Ecuador
Hymenoptera	Ichneumonidae		<i>Stethanoptx</i>	<i>erwini</i>		Townes	1971-	Neotropics
Hymenoptera	Trichogrammatidae		<i>Adryas</i>	<i>erwini</i>		Pinto & Owen	2004-	Neotropics
Psocoptera	Lachesillidae		<i>Waoraniella</i>	<i>erwini</i>		Garcia Aldrete	2006-	Ecuador
Psocoptera	Ptiloneuridae		<i>Loneura</i>	<i>erwini</i>		New & Thornton	1988-	Peru
Psocoptera	Ptiloneuridae		<i>Triplocania</i>	<i>erwini</i>		Neto, Rafael & Garcia Aldrete	2014-	Ecuador
Psocoptera	Psocidae		<i>Trichadenotenum</i>	<i>erwini</i>		Yoshizawa, Garcia Aldrete & Mockford	2008-	Neotropics
Psocoptera	Troctopso-coidae		<i>Troctopso-coides</i>	<i>erwini</i>		Mockford & Garcia Aldrete	2014-	Peru

List of the taxa described by Terry Erwin.**Table 2.** List of the tribes described by Terry Erwin.

Tribe	Tribauthor	Tribdate
Systolosomatini	Erwin	1985:467
Amarotyptini	Erwin	1985:467
Loxandrini	Erwin & Sims	1984:383
Xenaroswellanini	Erwin	2007:563

Table 3. List of the genera described by Terry Erwin.

Genus	Genauthor	Gendate
<i>Archaeocindis</i>	Kavanaugh & Erwin	1991:359
<i>Argentinatachoides</i>	Sallenave, Erwin & Roig	2008:8
<i>Bembidarenas</i>	Erwin	1972:8
<i>Costitachys</i>	Erwin	1974:128
<i>Geballusa</i>	Erwin	1994:574
<i>Gouleta</i>	Erwin	1994:578
<i>Guatemalteca</i>	Erwin	2004:12
<i>Guyanomorpha</i>	Erwin	2013:14
<i>Hybopteroides</i>	Erwin & Ball	2012:191
<i>Inpa</i>	Erwin	1978:31
<i>Manumorpha</i>	Erwin & Geraci	2008:86
<i>Meotachys</i>	Erwin	1974:130
<i>Moirainpa</i>	Erwin	1984:512
<i>Peruphorticus</i>	Erwin & Zamorano	2014:26
<i>Pseudophorticus</i>	Erwin	2004:7
<i>Quammenis</i>	Erwin	2000:279
<i>Samiriamorpha</i>	Erwin & Geraci	2008:89
<i>Tachysbembix</i>	Erwin	2004:3
<i>Tuxtlamorpha</i>	Erwin & Geraci	2008:82
<i>Valeriaaschero</i>	Erwin	2004:14
<i>Xenaroswelliana</i>	Erwin	2007:563
<i>Yasunimorpha</i>	Erwin & Geraci	2008:87

Table 4. List of the species described by Terry Erwin.

Genus	Species	Specauthor	Specdate	Locality
<i>Agra</i>	<i>aeroides</i>	Erwin	1983:284	Brazil
<i>Agra</i>	<i>anthrax</i>	Erwin	1986:314	Brazil
<i>Agra</i>	<i>ariasi</i>	Erwin	1982:200	Brazil
<i>Agra</i>	<i>atlas</i>	Erwin	1984:25	Trinidad
<i>Agra</i>	<i>atriperna</i>	Erwin	1984:42	Costa Rica; Panamá
<i>Agra</i>	<i>azureipennis</i>	Erwin	1982:208	Perú; Venezuela
<i>Agra</i>	<i>belize</i>	Erwin	1984:41	Belize
<i>Agra</i>	<i>blumax</i>	Erwin	1983:283	Brazil
<i>Agra</i>	<i>cachimbo</i>	Erwin	1984:30	Brazil
<i>Agra</i>	<i>cadabra</i>	Erwin	1986:303	Ecuador
<i>Agra</i>	<i>calamitas</i>	Erwin	1986:314	Brazil
<i>Agra</i>	<i>caliga</i>	Erwin	1982:206	Panamá
<i>Agra</i>	<i>campana</i>	Erwin	1983:273	Costa Rica; Panamá
<i>Agra</i>	<i>cauca</i>	Erwin	1998:509	Colombia
<i>Agra</i>	<i>cavei</i>	Erwin	1984:33	Paraguay
<i>Agra</i>	<i>chapada</i>	Erwin	1987:148	Brazil
<i>Agra</i>	<i>chocha</i>	Erwin	1986:304	Guyane; Suriname; Trinidad; Venezuela
<i>Agra</i>	<i>cobra</i>	Erwin	1982:56	Guyana
<i>Agra</i>	<i>coleps</i>	Erwin	1982:52	Guyane
<i>Agra</i>	<i>constans</i>	Erwin	1984:28	Brazil
<i>Agra</i>	<i>cuneolus</i>	Erwin	1983:272	Brazil
<i>Agra</i>	<i>cyaneucnemes</i>	Erwin	1984:45	Colombia
<i>Agra</i>	<i>dation</i>	Erwin	1987:156	Brazil
<i>Agra</i>	<i>dora</i>	Erwin	1984:34	Perú
<i>Agra</i>	<i>dorazul</i>	Erwin	1984:44	Colombia
<i>Agra</i>	<i>dryas</i>	Erwin	1982:55	Brazil
<i>Agra</i>	<i>ecaligis</i>	Erwin	1982:197	Ecuador
<i>Agra</i>	<i>ega</i>	Erwin	1982:60	Brazil
<i>Agra</i>	<i>eowilsoni</i>	Erwin	1998:509	Colombia
<i>Agra</i>	<i>eucera</i>	Erwin	1984:21	Panamá
<i>Agra</i>	<i>eucnemes</i>	Erwin	1984:23	Ecuador
<i>Agra</i>	<i>falsisagax</i>	Erwin	1982:55	Brazil
<i>Agra</i>	<i>fortuna</i>	Erwin	1983:270	Costa Rica; Panamá
<i>Agra</i>	<i>goyazella</i>	Erwin	1984:30	Brazil
<i>Agra</i>	<i>howdenorum</i>	Erwin	1982:194	Trinidad
<i>Agra</i>	<i>imaginis</i>	Erwin	1986:306	Brazil
<i>Agra</i>	<i>inca</i>	Erwin	1986:307	Perú
<i>Agra</i>	<i>inpa</i>	Erwin	1983:282	Brazil
<i>Agra</i>	<i>invicta</i>	Erwin	1982:58	Brazil
<i>Agra</i>	<i>iota</i>	Erwin	1984:33	Perú
<i>Agra</i>	<i>iquitosana</i>	Erwin	1982:201	Brazil; Perú
<i>Agra</i>	<i>lata</i>	Erwin	1987:157	Bolivia
<i>Agra</i>	<i>limulus</i>	Erwin	1982:199	Ecuador; Perú
<i>Agra</i>	<i>littleorum</i>	Erwin	1984:28	Brazil
<i>Agra</i>	<i>luebea</i>	Erwin	1983:285	Panamá
<i>Agra</i>	<i>magdalena</i>	Erwin	1987:159	Colombia

Genus	Species	Specauthor	Specdate	Locality
<i>Agra</i>	<i>maxli</i>	Erwin	1982:69	Brazil
<i>Agra</i>	<i>memnon</i>	Erwin	1987:157	Brazil
<i>Agra</i>	<i>mniszehi</i>	Erwin	1982:64	Guyane
<i>Agra</i>	<i>moira</i>	Erwin	1983:288	Brazil
<i>Agra</i>	<i>nigrarima</i>	Erwin	1984:25	Trinidad
<i>Agra</i>	<i>nola</i>	Erwin	1986:302	Costa Rica; Ecuador; Panamá
<i>Agra</i>	<i>notichlora</i>	Erwin	1984:33	Paraguay
<i>Agra</i>	<i>notiocyanea</i>	Erwin	1984:34	Bolivia
<i>Agra</i>	<i>nox</i>	Erwin	1984:25	Guyane
<i>Agra</i>	<i>oiapoquensis</i>	Erwin	1982:53	Brazil
<i>Agra</i>	<i>orabrocha</i>	Erwin	1984:43	Panamá
<i>Agra</i>	<i>paloma</i>	Erwin	1984:39	México
<i>Agra</i>	<i>para</i>	Erwin	1987:152	Brazil
<i>Agra</i>	<i>pearsoni</i>	Erwin	1984:36	Perú
<i>Agra</i>	<i>pennyi</i>	Erwin	1982:64	Brazil
<i>Agra</i>	<i>perkinsorum</i>	Erwin	1986:298	México
<i>Agra</i>	<i>phainops</i>	Erwin	1986:306	Surinam; Venezuela
<i>Agra</i>	<i>phite</i>	Erwin	1987:149	Bolivia
<i>Agra</i>	<i>pseuderythropus</i>	Erwin	1982:52	Guyane
<i>Agra</i>	<i>quararibea</i>	Erwin	1993:25	Perú
<i>Agra</i>	<i>rhomboides</i>	Erwin	1982:60	Guyane
<i>Agra</i>	<i>rubra</i>	Erwin	1987:153	Brazil
<i>Agra</i>	<i>rufarima</i>	Erwin	1984:27	Trinidad
<i>Agra</i>	<i>saltatrix</i>	Erwin	1982:65	Perú
<i>Agra</i>	<i>saramax</i>	Erwin	1993:22	Bolivia; Ecuador
<i>Agra</i>	<i>sasquatch</i>	Erwin	1982:208	Brazil
<i>Agra</i>	<i>satipo</i>	Erwin	1984:34	Perú
<i>Agra</i>	<i>seabrae</i>	Erwin	1982:205	Brazil
<i>Agra</i>	<i>serra</i>	Erwin	1984:28	Brazil
<i>Agra</i>	<i>sironyx</i>	Erwin	1984:25	Trinidad
<i>Agra</i>	<i>sphenarion</i>	Erwin	1982:65	Perú
<i>Agra</i>	<i>spina</i>	Erwin	1983:272	Brazil
<i>Agra</i>	<i>stockwelli</i>	Erwin	1984:36	Panamá
<i>Agra</i>	<i>tarapoto</i>	Erwin	1984:30	Perú
<i>Agra</i>	<i>tarapotoana</i>	Erwin	1982:201	Perú
<i>Agra</i>	<i>tessera</i>	Erwin	1983:272	Brazil
<i>Agra</i>	<i>tingomaria</i>	Erwin	1984:36	Perú
<i>Agra</i>	<i>titan</i>	Erwin	1982:201	Brazil; Guyane
<i>Agra</i>	<i>tuitis</i>	Erwin	1987:156	Perú
<i>Agra</i>	<i>tumatumari</i>	Erwin	1982:199	Guyana
<i>Agra</i>	<i>varzeicola</i>	Erwin	1982:199	Brazil
<i>Agra</i>	<i>vate</i>	Erwin	1986:302	Costa Rica; Guatemala; México; Panamá
<i>Agra</i>	<i>vation</i>	Erwin	1983:287	Perú
<i>Agra</i>	<i>vesedes</i>	Erwin	1984:46	South America
<i>Agra</i>	<i>xingu</i>	Erwin	1984:28	Brazil
<i>Agra</i>	<i>yeti</i>	Erwin	1982:207	Brazil
<i>Agra</i>	<i>yoda</i>	Erwin	1982:64	Guyane

Genus	Species	Specauthor	Specdate	Locality
<i>Agra</i>	<i>zona</i>	Erwin	1983:282	Panamá
<i>Agra</i>	<i>demerasae</i>	Erwin	1984:23	Guyana
<i>Agra</i>	<i>itatiaya</i>	Erwin	1986:312	Brazil
<i>Agra</i>	<i>kayae</i>	Erwin	1984:39	Costa Rica; Belize; Guatemala; Honduras; México; Panamá
<i>Agra</i>	<i>lavernae</i>	Erwin	1978:265	Costa Rica; Panamá
<i>Agra</i>	<i>olivencana</i>	Erwin	1982:201	Brazil
<i>Agra</i>	<i>perinvicta</i>	Erwin	1982:56	Brazil
<i>Agra</i>	<i>yodella</i>	Erwin	1982:197	Guyane
<i>Agra</i>	<i>tingo</i>	Erwin	2000:103	Perú
<i>Agra</i>	<i>biolat</i>	Erwin	2000:104	Perú
<i>Agra</i>	<i>aeris</i>	Erwin	2000:104	Perú
<i>Agra</i>	<i>solimoes</i>	Erwin	2000:105	Brazil
<i>Agra</i>	<i>conhormigas</i>	Erwin	2000:106	Perú
<i>Agra</i>	<i>lilu</i>	Erwin	2000:108	Brazil
<i>Agra</i>	<i>servatorum</i>	Erwin	2000:110	Perú
<i>Agra</i>	<i>lindae</i>	Erwin	2000:111	Perú
<i>Agra</i>	<i>rondonia</i>	Erwin	2000:112	Brazil
<i>Agra</i>	<i>nex</i>	Erwin	2000:112	Brazil
<i>Agra</i>	<i>manu</i>	Erwin	2000:112	Perú
<i>Agra</i>	<i>dax</i>	Erwin	2000:115	Panamá
<i>Agra</i>	<i>orinocensis</i>	Erwin	2000:8	Venezuela
<i>Agra</i>	<i>novaurora</i>	Erwin	2000:9	Ecuador
<i>Agra</i>	<i>alinahui</i>	Erwin	2000:9	Ecuador
<i>Agra</i>	<i>superba</i>	Erwin	2000:10	Brazil; Venezuela
<i>Agra</i>	<i>maracay</i>	Erwin	2000:13	Venezuela
<i>Agra</i>	<i>bci</i>	Erwin	2000:14	Costa Rica; Panamá
<i>Agra</i>	<i>falcon</i>	Erwin	2000:14	Venezuela
<i>Agra</i>	<i>hovorei</i>	Erwin	2000:15	México
<i>Agra</i>	<i>tuxlas</i>	Erwin	2000:15	México
<i>Agra</i>	<i>zapotal</i>	Erwin	2000:15	Guatemala; México
<i>Agra</i>	<i>hespenheide</i>	Erwin	2000:16	Costa Rica
<i>Agra</i>	<i>paratax</i>	Erwin	2000:16	Costa Rica
<i>Agra</i>	<i>samiria</i>	Erwin	2000:16	Perú
<i>Agra</i>	<i>duckworthorum</i>	Erwin	2000:16	Panamá
<i>Agra</i>	<i>eponine</i>	Erwin	2000:16	Costa Rica
<i>Agra</i>	<i>inbio</i>	Erwin	2000:17	Costa Rica
<i>Agra</i>	<i>pichincha</i>	Erwin	2000:17	Ecuador
<i>Agra</i>	<i>otbello</i>	Erwin	2000:19	Ecuador
<i>Agra</i>	<i>smurf</i>	Erwin	2000:19	Brazil
<i>Agra</i>	<i>magnifica</i>	Erwin	2000:19	Perú
<i>Agra</i>	<i>suprema</i>	Erwin	2000:20	Brazil
<i>Agra</i>	<i>yola</i>	Erwin	2000:282	Costa Rica
<i>Agra</i>	<i>mime</i>	Erwin	2000:258	Ecuador
<i>Agra</i>	<i>dable</i>	Erwin	2002:37	Costa Rica
<i>Agra</i>	<i>liv</i>	Erwin	2002:39	Costa Rica; Panamá
<i>Agra</i>	<i>santarosa</i>	Erwin	2002:40	Costa Rica
<i>Agra</i>	<i>solisi</i>	Erwin	2002:41	Costa Rica

Genus	Species	Specauthor	Specdate	Locality
<i>Agra</i>	<i>jimwappes</i>	Erwin	2002:16	Costa Rica
<i>Agra</i>	<i>winnie</i>	Erwin	2002:17	Costa Rica; El Salvador
<i>Agra</i>	<i>giesberti</i>	Erwin	2002:19	Costa Rica; Guatemala; Panamá
<i>Agra</i>	<i>not</i>	Erwin	2002:21	Costa Rica
<i>Agra</i>	<i>phallica</i>	Erwin	2002:22	Costa Rica
<i>Agra</i>	<i>turrialba</i>	Erwin	2002:24	Costa Rica
<i>Agra</i>	<i>catie</i>	Erwin	2002:27	Costa Rica
<i>Agra</i>	<i>fugax</i>	Erwin	2002:28	Costa Rica
<i>Agra</i>	<i>sirena</i>	Erwin	2002:29	Costa Rica
<i>Agra</i>	<i>quesada</i>	Erwin	2002:31	Costa Rica
<i>Agra</i>	<i>janzeni</i>	Erwin	2002:33	Costa Rica
<i>Agra</i>	<i>katewinsletae</i>	Erwin	2002:35	Costa Rica
<i>Agra</i>	<i>ubicki</i>	Erwin	2002:43	Costa Rica
<i>Agra</i>	<i>granodeoro</i>	Erwin	2002:45	Costa Rica
<i>Agra</i>	<i>schwarzeneggeri</i>	Erwin	2002:46	Costa Rica
<i>Agra</i>	<i>solanoi</i>	Erwin	2002:48	Costa Rica
<i>Agra</i>	<i>notcatie</i>	Erwin	2002:50	Costa Rica
<i>Agra</i>	<i>pitilla</i>	Erwin	2002:53	Costa Rica
<i>Agra</i>	<i>catbellae</i>	Erwin	2002:56	Costa Rica
<i>Agra</i>	<i>delgadoi</i>	Erwin	2002:58	Costa Rica; Panamá
<i>Agra</i>	<i>julie</i>	Erwin	2002:59	Costa Rica
<i>Agra</i>	<i>ichabod</i>	Erwin	2002:61	Costa Rica
<i>Agra</i>	<i>monteverde</i>	Erwin	2002:62	Costa Rica
<i>Agra</i>	<i>zumbado</i>	Erwin	2002:63	Costa Rica
<i>Agra</i>	<i>zuniga</i>	Erwin	2002:65	Costa Rica
<i>Agra</i>	<i>cruciarria</i>	Erwin	2010:6	Brazil
<i>Agra</i>	<i>grace</i>	Erwin	2010:7	Peru
<i>Agra</i>	<i>max</i>	Erwin	2010:9	Brazil
<i>Agra</i>	<i>minasianus</i>	Erwin	2010:10	Brazil
<i>Agra</i>	<i>notpusilla</i>	Erwin	2010:11	Brazil
<i>Agra</i>	<i>pseudopusilla</i>	Erwin	2010:13	Brazil
<i>Agra</i>	<i>ce</i>	Erwin	2010:16	Peru
<i>Agra</i>	<i>maia</i>	Erwin	2010:17	Bolivia
<i>Agra</i>	<i>piranha</i>	Erwin	2010:18	Ecuador
<i>Agra</i>	<i>risseri</i>	Erwin	2010:19	Bolivia
<i>Agra</i>	<i>tiputini</i>	Erwin	2010:23	Ecuador
<i>Apotomus</i>	<i>reichardti</i>	Erwin	1980:100	Brazil
<i>Argentinatachoides</i>	<i>balli</i>	Sallenave, Erwin & Roig	2008:8	Argentina
<i>Asklepia</i>	<i>cambellorum</i>	Zamorano & Erwin	2014:39	Brazil
<i>Asklepia</i>	<i>demiti</i>	Erwin & Zamorano	2014:41	Brazil
<i>Asklepia</i>	<i>duofos</i>	Zamorano & Erwin	2014:43	Brazil
<i>Asklepia</i>	<i>grammechrysea</i>	Zamorano & Erwin	2014:44	Perú

Genus	Species	Specauthor	Specdate	Locality
<i>Asklepia</i>	<i>laetitia</i>	Zamorano & Erwin	2014:49	Colombia
<i>Asklepia</i>	<i>matomena</i>	Zamorano & Erwin	2014:52	Brazil
<i>Asklepia</i>	<i>adisi</i>	Erwin & Zamorano	2014:55	Brazil
<i>Asklepia</i>	<i>asuncionensis</i>	Erwin & Zamorano	2014:57	Paraguay
<i>Asklepia</i>	<i>biolat</i>	Erwin & Zamorano	2014:58	Perú
<i>Asklepia</i>	<i>bracheia</i>	Zamorano & Erwin	2014:60	Perú
<i>Asklepia</i>	<i>cuiabaensis</i>	Erwin & Zamorano	2014:62	Brazil
<i>Asklepia</i>	<i>ecuadoriana</i>	Erwin & Zamorano	2014:64	Ecuador
<i>Asklepia</i>	<i>kathleenae</i>	Erwin & Zamorano	2014:66	Brazil
<i>Asklepia</i>	<i>macrops</i>	Erwin & Zamorano	2014:67	Argentina
<i>Asklepia</i>	<i>marchantaria</i>	Erwin & Zamorano	2014:69	Brazil
<i>Asklepia</i>	<i>marituba</i>	Zamorano & Erwin	2014:71	Brazil
<i>Asklepia</i>	<i>pakitza</i>	Erwin & Zamorano	2014:72	Perú
<i>Asklepia</i>	<i>paraguayensis</i>	Zamorano & Erwin	2014:74	Paraguay
<i>Asklepia</i>	<i>samiriaensis</i>	Zamorano & Erwin	2014:77	Perú
<i>Asklepia</i>	<i>stalametlitos</i>	Zamorano & Erwin	2014:79	Bolivia
<i>Asklepia</i>	<i>surinamensis</i>	Zamorano & Erwin	2014:81	Surinam
<i>Asklepia</i>	<i>vigilante</i>	Erwin & Zamorano	2014:85	Perú
<i>Aspasiola</i>	<i>bonita</i>	Erwin	2004:9	Costa Rica
<i>Aspasiola</i>	<i>osa</i>	Erwin	2004:14	Costa Rica
<i>Aspasiola</i>	<i>selva</i>	Erwin	2004:16	Costa Rica
<i>Aspasiola</i>	<i>steineri</i>	Erwin	2004:18	Costa Rica
<i>Badister</i>	<i>amazonus</i>	Erwin & Ball	2011:409	Perú
<i>Bembidion</i>	<i>palosverdes</i>	Kavanaugh & Erwin	1992:312	USA
<i>Bembidion</i>	<i>aeger</i>	Erwin	1982:475	Costa Rica
<i>Bembidion</i>	<i>armuelles</i>	Erwin	1982:481	Panamá
<i>Bembidion</i>	<i>barrense</i>	Erwin	1982:482	Panamá
<i>Bembidion</i>	<i>chiriqui</i>	Erwin	1982:476	Panamá

Genus	Species	Specauthor	Specdate	Locality
<i>Bembidion</i>	<i>cortes</i>	Erwin	1982:480	Honduras; México
<i>Bembidion</i>	<i>diabola</i>	Erwin	1982:473	Costa Rica
<i>Bembidion</i>	<i>edwardsi</i>	Erwin	1982:475	Costa Rica
<i>Bembidion</i>	<i>franiae</i>	Erwin	1982:479	Guatemala
<i>Bembidion</i>	<i>ixtatan</i>	Erwin	1982:484	Guatemala
<i>Bembidion</i>	<i>lavernae</i>	Erwin	1982:472	Costa Rica
<i>Bembidion</i>	<i>nabuala</i>	Erwin	1982:477	Guatemala
<i>Bembidion</i>	<i>purulha</i>	Erwin	1982:466	Guatemala
<i>Bembidion</i>	<i>quetzal</i>	Erwin	1982:473	Guatemala
<i>Brachinus</i>	<i>aabaaba</i>	Erwin	1970:161	México; USA
<i>Brachinus</i>	<i>adustipennis</i>	Erwin	1969:287	Costa Rica; CUBA; México; Panamá; USA
<i>Brachinus</i>	<i>alexiguis</i>	Erwin	1970:57	USA
<i>Brachinus</i>	<i>capnicus</i>	Erwin	1970:60	USA
<i>Brachinus</i>	<i>chalchibuitlicue</i>	Erwin	1970:79	Costa Rica; Guatemala; México; Panamá
<i>Brachinus</i>	<i>chirriador</i>	Erwin	1970:80	Honduras; México
<i>Brachinus</i>	<i>cibolensis</i>	Erwin	1970:98	México; USA
<i>Brachinus</i>	<i>cyanochroaticus</i>	Erwin	1969:283	Canada; USA
<i>Brachinus</i>	<i>explosus</i>	Erwin	1970:161	México; USA
<i>Brachinus</i>	<i>favicollis</i>	Erwin	1965:11	México; USA
<i>Brachinus</i>	<i>fulminatus</i>	Erwin	1969:288	USA
<i>Brachinus</i>	<i>galactoderus</i>	Erwin	1970:132	México
<i>Brachinus</i>	<i>gebhardis</i>	Erwin	1965:6	México
<i>Brachinus</i>	<i>ichabodopsis</i>	Erwin	1970:150	USA
<i>Brachinus</i>	<i>imperialensis</i>	Erwin	1965:17	México; USA
<i>Brachinus</i>	<i>imporcitis</i>	Erwin	1970:114	USA
<i>Brachinus</i>	<i>javalinopsis</i>	Erwin	1970:109	USA
<i>Brachinus</i>	<i>kavanaughi</i>	Erwin	1969:287	México; USA
<i>Brachinus</i>	<i>microamericanus</i>	Erwin	1969:287	USA
<i>Brachinus</i>	<i>mobilis</i>	Erwin	1970:159	USA
<i>Brachinus</i>	<i>oaxacensis</i>	Erwin	1970:117	México
<i>Brachinus</i>	<i>pallidus</i>	Erwin	1965:8	USA
<i>Brachinus</i>	<i>sonorous</i>	Erwin	1970:163	México
<i>Brachinus</i>	<i>velutinus</i>	Erwin	1965:17	USA
<i>Brachinus</i>	<i>vulcanoides</i>	Erwin	1969:287	USA
<i>Chelonodema</i>	<i>inbio</i>	Erwin	2000:281	Costa Rica
<i>Coptocarpus</i>	<i>philipi</i>	Erwin	1974:5	Australia
<i>Coptocarpus</i>	<i>chimbu</i>	Erwin	1974:7	New Guinea
<i>Coptocarpus</i>	<i>yorkensis</i>	Erwin	1974:7	Australia
<i>Coptocarpus</i>	<i>grossus</i>	Erwin	1974:8	Australia
<i>Costitachys</i>	<i>inusitatus</i>	Erwin	1974:130	Brazil; Guyane; Trinidad
<i>Costitachys</i>	<i>tena</i>	Erwin & Kavanaugh	2006:335	Ecuador
<i>Epikastea</i>	<i>biolat</i>	Erwin	2004:7	Perú
<i>Epikastea</i>	<i>grace</i>	Erwin	2004:13	Perú
<i>Epikastea</i>	<i>mancocapac</i>	Erwin	2004:15	Perú
<i>Epikastea</i>	<i>piranha</i>	Erwin	2004:16	Ecuador
<i>Epikastea</i>	<i>poguei</i>	Erwin	2004:17	Perú
<i>Erwiniana</i>	<i>aetholia</i>	(Erwin)	1973:12	Bolivia

Genus	Species	Specauthor	Specdate	Locality
<i>Erwiniana</i>	<i>alticola</i>	(Erwin)	1994:614	Colombia
<i>Erwiniana</i>	<i>am</i>	(Erwin)	1994:594	Perú
<i>Erwiniana</i>	<i>anchicaya</i>	(Erwin)	1994:607	Colombia
<i>Erwiniana</i>	<i>angustia</i>	(Erwin)	1994:592	Perú
<i>Erwiniana</i>	<i>anterocostis</i>	(Erwin)	1973:14	Costa Rica
<i>Erwiniana</i>	<i>apicisulcata</i>	(Erwin)	1973:18	Costa Rica
<i>Erwiniana</i>	<i>baeza</i>	(Erwin)	1994:582	Ecuador
<i>Erwiniana</i>	<i>batesi</i>	(Erwin)	1973:19	Brazil
<i>Erwiniana</i>	<i>bisulcifrons</i>	(Erwin)	1973:27	Brazil
<i>Erwiniana</i>	<i>chiriboga</i>	(Erwin)	1994:616	Ecuador
<i>Erwiniana</i>	<i>crassa</i>	(Erwin)	1994:583	Perú
<i>Erwiniana</i>	<i>dannyi</i>	(Erwin)	1994:616	Ecuador
<i>Erwiniana</i>	<i>depressiculptilis</i>	(Erwin)	1994:602	Ecuador
<i>Erwiniana</i>	<i>equanegrei</i>	(Erwin)	1994:586	Ecuador
<i>Erwiniana</i>	<i>esheje</i>	(Erwin)	1994:584	Perú
<i>Erwiniana</i>	<i>eugeneae</i>	(Erwin)	1994:605	Colombia; Perú
<i>Erwiniana</i>	<i>exigipunctata</i>	(Erwin)	1994:608	Brazil; Ecuador; Perú
<i>Erwiniana</i>	<i>foveosculptilis</i>	(Erwin)	1994:604	Brazil
<i>Erwiniana</i>	<i>grossipunctata</i>	(Erwin)	1973:20	Brazil
<i>Erwiniana</i>	<i>hamatilis</i>	(Erwin)	1994:598	Ecuador
<i>Erwiniana</i>	<i>henryi</i>	(Erwin)	1994:582	Ecuador
<i>Erwiniana</i>	<i>huacamayas</i>	(Erwin)	1994:617	Ecuador
<i>Erwiniana</i>	<i>indetecticostis</i>	(Erwin)	1994:595	Ecuador
<i>Erwiniana</i>	<i>iris</i>	(Erwin)	1973:11	Bolivia; Perú
<i>Erwiniana</i>	<i>irisculptilis</i>	(Erwin)	1994:603	Ecuador
<i>Erwiniana</i>	<i>jacupiranga</i>	(Erwin)	1994:613	Brazil
<i>Erwiniana</i>	<i>jefe</i>	(Erwin)	1994:608	Panamá
<i>Erwiniana</i>	<i>manusculptilis</i>	(Erwin)	1994:586	Perú
<i>Erwiniana</i>	<i>misahualli</i>	(Erwin)	1994:602	Ecuador
<i>Erwiniana</i>	<i>negrei</i>	(Erwin)	1973:12	Venezuela
<i>Erwiniana</i>	<i>nigripalpis</i>	(Erwin)	1973:9	Panamá
<i>Erwiniana</i>	<i>notesheje</i>	(Erwin)	1994:584	Ecuador; Perú
<i>Erwiniana</i>	<i>notparkeri</i>	(Erwin)	1994:598	Colombia
<i>Erwiniana</i>	<i>nox</i>	(Erwin)	1994:596	Ecuador
<i>Erwiniana</i>	<i>para</i>	(Erwin)	1994:589	Brazil
<i>Erwiniana</i>	<i>parainsularis</i>	(Erwin)	1973:26	Venezuela
<i>Erwiniana</i>	<i>parapara</i>	(Erwin)	1994:585	Brazil
<i>Erwiniana</i>	<i>parkeri</i>	(Erwin)	1994:597	Perú
<i>Erwiniana</i>	<i>pfunorum</i>	(Erwin)	1994:600	Brazil; Ecuador; Perú
<i>Erwiniana</i>	<i>protosculptilis</i>	(Erwin)	1994:601	Perú
<i>Erwiniana</i>	<i>punctisculptilis</i>	(Erwin)	1994:605	Perú
<i>Erwiniana</i>	<i>quadrata</i>	(Erwin)	1994:600	Perú
<i>Erwiniana</i>	<i>rosebuda</i>	(Erwin)	1994:612	Bolivia; Ecuador
<i>Erwiniana</i>	<i>samiria</i>	(Erwin)	1994:593	Perú
<i>Erwiniana</i>	<i>seriata</i>	(Erwin)	1973:19	Brazil
<i>Erwiniana</i>	<i>wygo</i>	(Erwin)	1994:615	Colombia
<i>Eucamaragnathus</i>	<i>amapa</i>	Erwin & Stork	1985:440	Brazil
<i>Eucamaragnathus</i>	<i>jaws</i>	Erwin & Stork	1985:441	Brazil

Genus	Species	Specauthor	Specdate	Locality
<i>Geballusa</i>	<i>microtreta</i>	Erwin	1973:24	Costa Rica; Panamá; Perú
<i>Geballusa</i>	<i>nannotreta</i>	Erwin	1994:577	Brazil
<i>Geballusa</i>	<i>oligotreta</i>	Erwin	1994:575	Panamá
<i>Geballusa</i>	<i>polytreta</i>	Erwin	1973:25	Brazil
<i>Geballusa</i>	<i>rex</i>	Erwin	1994:576	Brazil
<i>Geocharidius</i>	<i>gimlilii</i>	Erwin	1982:488	Guatemala
<i>Geocharidius</i>	<i>phineus</i>	Erwin	1982:491	Guatemala
<i>Geocharidius</i>	<i>romeoi</i>	Erwin	1982:488	Guatemala
<i>Gouleta</i>	<i>gentryi</i>	Erwin	1994:580	Perú
<i>Gouleta</i>	<i>notiophiloides</i>	Erwin	1973:22	Brazil; Perú
<i>Gouleta</i>	<i>spangleri</i>	Erwin	1973:23	Panamá
<i>Guatemalteca</i>	<i>virgen</i>	Erwin	2004:12	Costa Rica; Guatemala; Guyane; Perú
<i>Halocoryza</i>	<i>whiteheadiana</i>	Erwin	2011:7	México
<i>Hyboptera</i>	<i>apollonia</i>	Erwin	2004:33	Costa Rica; Panamá
<i>Hyboptera</i>	<i>auxiliadora</i>	Erwin	2004:35	Costa Rica; México; Panamá; USA
<i>Hybopteroides</i>	<i>biolat</i>	Erwin & Ball	2012:195	Perú
<i>Hybopteroides</i>	<i>karolynae</i>	Erwin & Ball	2012:196	Perú
<i>Hybopteroides</i>	<i>penrosei</i>	Erwin & Ball	2012:198	Ecuador
<i>Inpa</i>	<i>psydroides</i>	Erwin	1978:31	Brazil; Perú; Surinam
<i>Leistus</i>	<i>madmeridianus</i>	Erwin	1970:117	USA
<i>Lionepha</i>	<i>chintimini</i>	(Erwin & Kavanaugh)	1981:63	USA
<i>Lionepha</i>	<i>lindrothellus</i>	(Erwin & Kavanaugh)	1981:61	Canada; USA
<i>Lionepha</i>	<i>lummi</i>	(Erwin & Kavanaugh)	1981:62	Canada; USA
<i>Loricera</i>	<i>aptena</i>	Ball & Erwin	1969:889	México
<i>Manumorpha</i>	<i>biolat</i>	Erwin & Geraci	2008:86	Perú
<i>Mizotrechus</i>	<i>poirieri</i>	Erwin	2011:110	Guyane
<i>Mizotrechus</i>	<i>bellorum</i>	Erwin	2011:88	Guyane
<i>Mizotrechus</i>	<i>woldai</i>	Erwin	2011:112	Panamá
<i>Mizotrechus</i>	<i>belvedere</i>	Erwin	2011:89	Guyane
<i>Mizotrechus</i>	<i>brulei</i>	Erwin	2011:90	Guyane
<i>Mizotrechus</i>	<i>chontalesensis</i>	Erwin	2011:92	Nicaragua
<i>Mizotrechus</i>	<i>costaricensis</i>	Erwin	2011:94	Costa Rica
<i>Mizotrechus</i>	<i>dalensi</i>	Erwin	2011:95	Guyane
<i>Mizotrechus</i>	<i>edithpiafae</i>	Erwin	2011:97	South America
<i>Mizotrechus</i>	<i>fortunensis</i>	Erwin	2011:98	Panamá
<i>Mizotrechus</i>	<i>gorgona</i>	Erwin	2011:100	Colombia
<i>Mizotrechus</i>	<i>grossus</i>	Erwin	2011:101	Guyane
<i>Mizotrechus</i>	<i>jefe</i>	Erwin	2011:101	Panamá
<i>Mizotrechus</i>	<i>mariefalorettae</i>	Erwin	2011:104	Guyane
<i>Mizotrechus</i>	<i>minutus</i>	Erwin	2011:106	Guyane
<i>Mizotrechus</i>	<i>neblinensis</i>	Erwin	2011:108	Guyane; Venezuela
<i>Moirainpa</i>	<i>amazona</i>	Erwin	1984:512	Brazil; Perú
<i>Moriosomus</i>	<i>motschulskyi</i>	Erwin & Moore	2007:4	Perú
<i>Nebria</i>	<i>piute</i>	Erwin & Ball	1972:95	USA

Genus	Species	Specauthor	Specdate	Locality
<i>Nebria</i>	<i>piute</i>	Erwin & Ball	1972:95	USA
<i>Nebria</i>	<i>piute</i>	Erwin & Ball	1972:95	USA
<i>Paratachys</i>	<i>potomaca</i>	Erwin	1981:152	USA
<i>Pericompso</i>	<i>alcimus</i>	Erwin	1974:72	Argentina; Bolivia; Paraguay; Perú
<i>Pericompso</i>	<i>amygdali</i>	Erwin	1974:66	Bolivia; Venezuela
<i>Pericompso</i>	<i>acon</i>	Erwin	1974:77	Bolivia
<i>Pericompso</i>	<i>anassa</i>	Erwin	1974:77	Argentina; Paraguay
<i>Pericompso</i>	<i>bilbo</i>	Erwin	1974:31	Venezuela
<i>Pericompso</i>	<i>callicalymma</i>	Erwin	1974:68	Argentina; Brazil
<i>Pericompso</i>	<i>carinatus</i>	Erwin	1974:93	Brazil
<i>Pericompso</i>	<i>commotes</i>	Erwin	1974:31	Venezuela
<i>Pericompso</i>	<i>crossarchon</i>	Erwin	1974:34	Brazil
<i>Pericompso</i>	<i>crossadmos</i>	Erwin	1974:35	Argentina; Brazil
<i>Pericompso</i>	<i>crossotus</i>	Erwin	1974:85	Brazil; Paraguay
<i>Pericompso</i>	<i>diabalius</i>	Erwin	1974:83	Colombia
<i>Pericompso</i>	<i>dynastes</i>	Erwin	1974:28	Venezuela
<i>Pericompso</i>	<i>eubothrus</i>	Erwin	1974:71	Brazil
<i>Pericompso</i>	<i>gongylus</i>	Erwin	1974:37	México
<i>Pericompso</i>	<i>jamcubanus</i>	Erwin	1974:57	Cuba; Jamaica
<i>Pericompso</i>	<i>leechi</i>	Erwin	1974:46	México
<i>Pericompso</i>	<i>leucocarenius</i>	Erwin	1974:34	El Salvador; México
<i>Pericompso</i>	<i>micropegasus</i>	Erwin	1974:75	Bolivia
<i>Pericompso</i>	<i>nonantensis</i>	Erwin	1974:61	Dominican Republic; Jamaica
<i>Pericompso</i>	<i>nonandinus</i>	Erwin	1974:66	Brazil
<i>Pericompso</i>	<i>pauli</i>	Erwin	1974:47	El Salvador; México
<i>Pericompso</i>	<i>pegasus</i>	Erwin	1974:75	Bolivia
<i>Pericompso</i>	<i>philipi</i>	Erwin	1974:62	Cuba; Dominican Republic; Haiti
<i>Pericompso</i>	<i>polychaetus</i>	Erwin	1974:88	Bolivia
<i>Pericompso</i>	<i>prionomus</i>	Erwin	1974:63	Panamá
<i>Pericompso</i>	<i>reticulatus</i>	Erwin	1974:24	Brazil; Guyana
<i>Pericompso</i>	<i>rorschachinus</i>	Erwin	1974:92	Bolivia; Perú; Venezuela
<i>Pericompso</i>	<i>sagma</i>	Erwin	1974:45	México
<i>Pericompso</i>	<i>silicis</i>	Erwin	1974:51	Brazil; Colombia; Costa Rica; Honduras
<i>Pericompso</i>	<i>stenocitharus</i>	Erwin	1974:84	Paraguay
<i>Pericompso</i>	<i>subincisus</i>	Erwin	1974:70	Brazil
<i>Pericompso</i>	<i>tetrphalarus</i>	Erwin	1974:68	Bolivia
<i>Pericompso</i>	<i>tlaloc</i>	Erwin	1974:54	Costa Rica; México
<i>Pericompso</i>	<i>tolype</i>	Erwin	1974:39	Argentina; Bolivia; Brazil; Venezuela
<i>Peruphorticus</i>	<i>gulliveri</i>	Erwin & Zamorano	2014:26	Ecuador; Perú
<i>Polyderis</i>	<i>antiqua</i>	Erwin	1971:234	México
<i>Polyderis</i>	<i>moira</i>	Erwin	1984:513	Brazil
<i>Polyderis</i>	<i>nympha</i>	Erwin	1984:515	Brazil; Perú
<i>Polyderis</i>	<i>terra</i>	Erwin	1984:514	Brazil
<i>Polyderis</i>	<i>ucayali</i>	Erwin	1984:514	Brazil; Perú
<i>Pseudomorpha</i>	<i>santarita</i>	Erwin & Amundson	2013:47	USA

Genus	Species	Specauthor	Specdate	Locality
<i>Pseudomorpha</i>	<i>santacruz</i>	Erwin & Amundson	2013:45	USA
<i>Pseudomorpha</i>	<i>patagonia</i>	Erwin & Amundson	2013:39	USA
<i>Pseudomorpha</i>	<i>huachinera</i>	Amundson & Erwin	2013:36	México; USA
<i>Pseudomorpha</i>	<i>penablanca</i>	Amundson & Erwin	2013:42	USA
<i>Pseudomorpha</i>	<i>pima</i>	Amundson & Erwin	2013:44	USA
<i>Pseudophorticus</i>	<i>puncticollis</i>	Erwin	2004:8	Costa Rica
<i>Quammenis</i>	<i>spectabilis</i>	Erwin	2000:280	Costa Rica
<i>Samiriamorpha</i>	<i>grace</i>	Erwin & Geraci	2008:90	Perú
<i>Tachysbembix</i>	<i>sirena</i>	Erwin	2004:4	Costa Rica
<i>Tachysbembix</i>	<i>wendyporrasae</i>	Erwin	2004:6	Costa Rica
<i>Valeriaaschero</i>	<i>flora</i>	Erwin	2004:15	Costa Rica; Panamá
<i>Valeriaaschero</i>	<i>nigrita</i>	Erwin	2004:16	Costa Rica
<i>Xenaroswelliana</i>	<i>deltaquadrant</i>	Erwin	2007:564	Brazil
<i>Xystosomus</i>	<i>convexus</i>	Erwin	1973:29	Brazil
<i>Xystosomus</i>	<i>impressifrons</i>	Erwin	1973:32	Brazil
<i>Xystosomus</i>	<i>laevimicans</i>	Erwin	1973:31	Brazil
<i>Xystosomus</i>	<i>laevis</i>	Erwin	1973:30	Brazil
<i>Xystosomus</i>	<i>niger</i>	Erwin	1973:32	Brazil
<i>Xystosomus</i>	<i>paralaevis</i>	Erwin	1973:30	Brazil
<i>Xystosomus</i>	<i>tholus</i>	Erwin	1973:34	Brazil
<i>Yasunimorpha</i>	<i>piranha</i>	Erwin & Geraci	2008:88	Ecuador

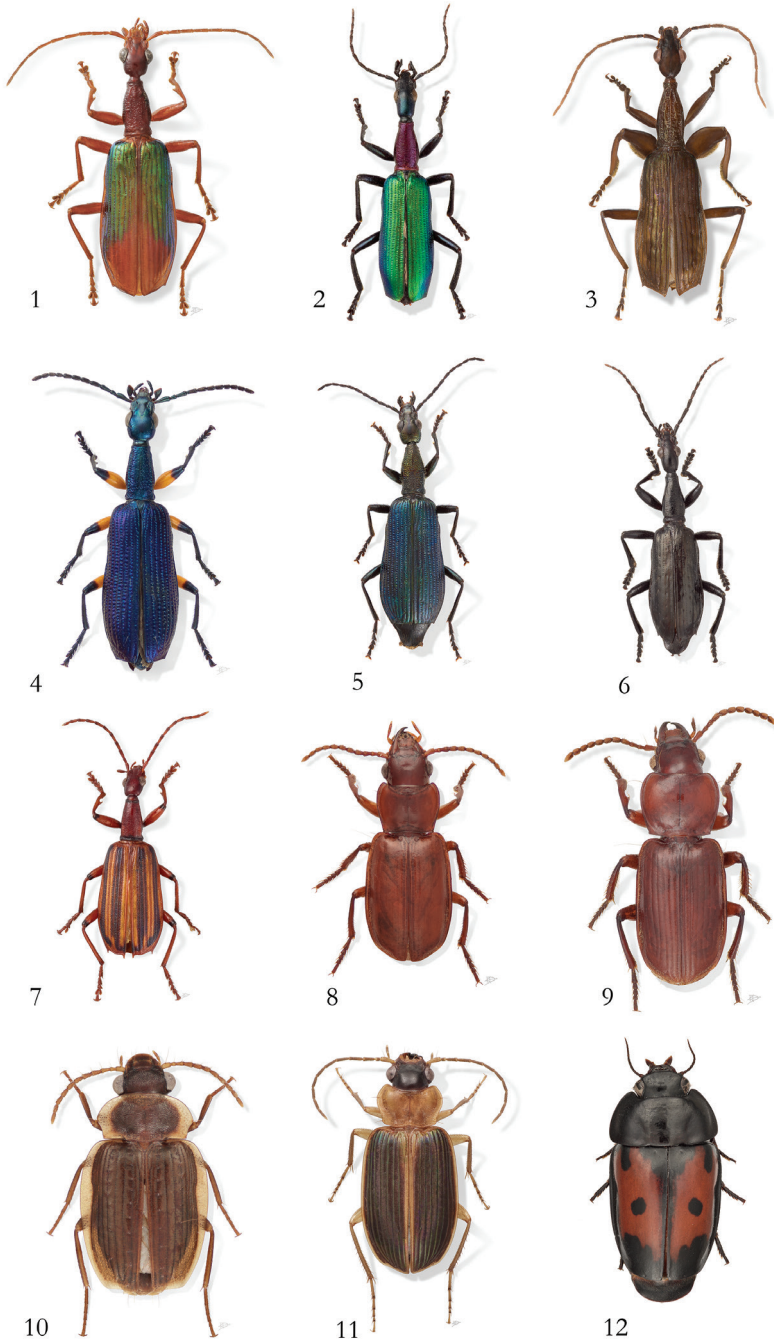


Figure 1–12. Photos of species described by Terry Erwin. **1** *Agra katewinsletae* Erwin, 2002 **2** *A. vation* Erwin, 1983 **3** *A. schwarzeneggeri* Erwin, 2002 **4** *A. grace* Erwin, 2010 **5** *A. risseri* Erwin, 2010 **6** *A. liv* Erwin, 2002 **7** *A. vate* Erwin, 1986 **8** *Mizotrechus bellorum* Erwin, 2011 **9** *M. edithpiafae* Erwin, 2011 **10** *Hybopteroides karolynae* Erwin & Ball, 2012 **11** *Badister amazonus* Erwin & Ball, 2011 **12** *Guyanemorpha spectabilis* Erwin, 2013. Photos: Karolyn Darrow.