

Rhadinoscelidia lixa sp. nov. (Hymenoptera, Chrysididae, Loboscelidiinae) found on an ant nest in Thailand

Yu Hisasue¹, Toshiharu Mita²

1 Entomological Laboratory, Graduate School of Bioresource and Bioenvironmental Sciences, Kyushu University, 744, Motoooka, Nishi-ku, Fukuoka, Fukuoka, 819-0395, Japan **2** Entomological Laboratory, Faculty of Agriculture, Kyushu University, 744, Motoooka, Nishi-ku, Fukuoka, Fukuoka, 819-0395, Japan

Corresponding author: Toshiharu Mita (t3mita@agr.kyushu-u.ac.jp)

Academic editor: Norman Johnson | Received 1 June 2020 | Accepted 23 August 2020 | Published 12 October 2020

<http://zoobank.org/E4D8FE8A-B5DA-4A25-9E40-15693CA6597E>

Citation: Hisasue Y, Mita T (2020) *Rhadinoscelidia lixa* sp. nov. (Hymenoptera, Chrysididae, Loboscelidiinae) found on an ant nest in Thailand. ZooKeys 975: 1–9. <https://doi.org/10.3897/zookeys.975.54952>

Abstract

Rhadinoscelidia lixa sp. nov. is described from Thailand. It is the fifth species of the genus and second species from Thailand. A biological note on the species with its associated ants is provided.

Keywords

Carebara diversa, chrysidid wasp, myrmecophily, taxonomy, Thailand

Introduction

Loboscelidiinae are rare and morphologically peculiar chrysidid wasps. The subfamily contains two genera, *Loboscelidia* Westwood, 1874 and *Rhadinoscelidia* Kimsey, 1988. To date, *Rhadinoscelidia* is known by four species from Hainan Island (China), Thailand, Laos, West Java (Indonesia), and peninsular Malaysia (Kojima and Ubaidillah 2003; Liu et al. 2011; Kimsey 2018). The genus is similar to *Loboscelidia* in some morphological characters; however, *Rhadinoscelidia* can be distinguished from *Loboscelidia* by the following characters: cervical expansion separated from upper gena with reduced patches of ribbon-like setae, reduced wing venation of the forewing, and

reduced flanges on the legs (Kimsey 2018). Although nothing is known about their biology, the genus *Loboscelidia* is considered as an egg parasitoid of stick insects, similar to the Amiseginae, and the bizarre structural modification implies their myrmecophily (Riek 1970; Krombein 1983; Kimsey 2012). During the investigation of chrysidid fauna of Southeast Asia, we had a chance to examine an unidentified female of *Rhadinoscelidia* from Thailand. This wasp was found staying at the nest entrance of the ant species *Carebara diversa* (Jerdon, 1851) (Formicidae, Myrmicinae).

In this paper, we describe it as a new species of *Rhadinoscelidia* and provide a key to known species, and a brief discussion on the life history, of the genus.

Materials and methods

The material used in this study is deposited in the Entomological Laboratory, Faculty of Agriculture, Kyushu University, Japan. Images were taken with a Canon EOS Kiss X8i camera and edited using Adobe Photoshop CC. Morphological terminology and measurements mainly follows Kimsey (1988, 2018) and Liu et al. (2011). The following abbreviations and indices were used: maximum length of median ocellus diameter (MOD), minimum length of postocellar line (POL), minimum length of ocello-ocular line (OOL), maximum length of lateral ocellus diameter (LOD), lateral ocellar line (LOL, Masner and Huggert 1989) is the shortest distance between the inner margins of median and lateral ocelli, segment of flagellomere (F), metasomal tergite (T), and metasomal sternite (S).

Taxonomy

Rhadinoscelidia Kimsey, 1988

Diagnosis. Antennal scape distinctly longer than head; vertex sharply declivous behind ocelli; cervical expansion of head with posterior shield-like expansion clearly separate from rest of head; forewing venation highly reduced, restricted to basal sixth or less; all tibiae without flanges.

Distribution. China (Hainan Island), Thailand, Malaysia, and Indonesia.

Host. Unknown.

Rhadinoscelidia lixa Hisasue & Mita, sp. nov.

<http://zoobank.org/AF07B6A0-64D8-4C80-A326-0B3F0B163ADC>

Figs 1–7

Material examined. *Holotype*, ♀, Thailand, Phrae Prov. 153 m, Mang Chin Dist., nr. Wiang Kosai NP, 3. V. 2019, R. Ishikawa leg. (Entomological Laboratory, Faculty of Agriculture, Kyushu University).

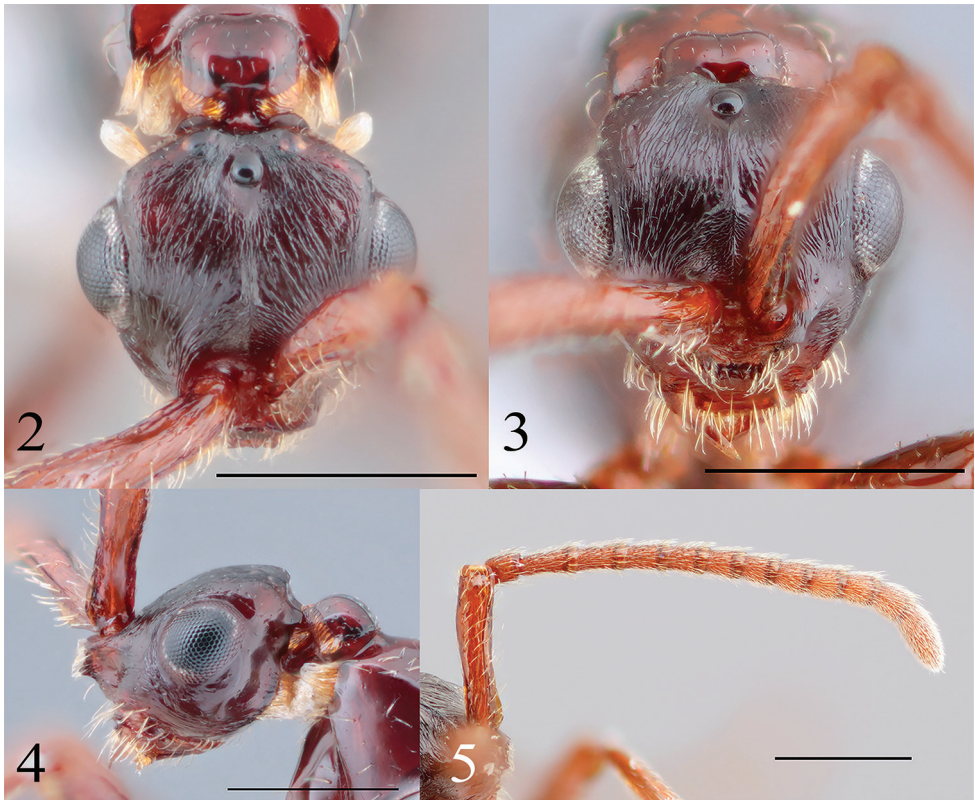


Figure 1. Lateral habitus of *Rhadinoscielidia lixa* sp. nov. (holotype). Scale bar: 1 mm.

Description of holotype. Female (Fig. 1). Body 3.0 mm long.

Head. Head (Figs 2–4) 1.9 times as long as height in lateral view, 1.3 times as long as maximum width; minimum length between compound eyes 0.7 times as long as head width; frontal projection rectangular in frontal view (Fig. 3); apical margin of frontal projection depressed (Fig. 2); malar space striate; frons striate radially except smooth appressed area in front of midocellus (Fig. 2); low ridge present from around posterior part of inner orbit of eye to posterior depression of vertex; vertex without transverse ridge, deeply depressed posteriorly; cervical expansion curved in lateral view (Fig. 4); temple 3.3 times as long as MOD; POL 2.5 times as LOD; OOL 3.0 times as long as LOD; LOL as long as LOD; scape 4.3 times as long as wide, sparsely punctate, slightly curved, 0.8 times as long as head width (Fig. 5); flange of scape 0.3 times as long as scape length; maximum width of flange 0.6 times as wide as tubular part of scape (Fig. 5); pedicel 1.3 times as long as wide, 0.5 times less than F1; F1–F7 tubular; relative length (width) of F1–F11: 2.4 (1.1): 2.0 (1.2): 1.8 (1.2): 1.6 (1.0): 1.4 (1.0): 1.4 (1.0): 1.4 (1.0): 1.4 (1.1): 1.4 (1.1): 1.4 (1.1): 3.2 (1.2).

Mesosoma. Mesosoma polished (Figs 1, 6); pronotum 0.9 times as long as maximum width; maximum width of pronotum 1.5 times as wide as posterior width; lateral margin of pronotum without distinct ridge (Fig. 6); mesoscutum 1.1 times as long as wide; tegula polished, 1.5 times as long as wide (Fig. 6); mesoscutum with notauli reaching posterior margin; mesoscutellum polished, 1.6 times as long as maximum width, 4.4 times as long as metanotum length (Fig. 7); length between metanotal depressions 1.5 times as long as length of metanotum (Fig. 7); propodeum smooth; projection weakly developed; dorsal margin of propodeum concave above foramen (Figs 1, 7).



Figures 2–5. Head of *Radinoscelidia lixa* sp. nov. (holotype) **2** dorsal **3** frontal **4** lateral **5** antenna. Scale bars: 0.5 mm.

Legs. Legs polished (Fig. 1); femora cylindrical; tibiae slightly flattened, with longitudinal ridge on lower side; forefemur 4.1 times width; foretibia 5.9 times as long as width; midfemur 4.8 times as long as width; midtibia 6.6 times as long as width; hindcoxa 2.4 times as long as hindtrochanter; hindfemur 5.1 times as long as maximum width, 1.5 times as long as head width; hindtibia nearly straight, 8.1 times as long as maximum width (Fig. 1); hindbasitarsus 0.55 times as long as head width; relative length of hindtarsomeres = 3.5: 1.8: 1.7: 1: 2.3; tarsal claws with median tooth.

Wings. Fore and hindwings broken, missing from basal portion (Figs 6, 7).

Metasoma. Metasoma polished and smooth.

Pilosity. Frons with sparse decumbent needle-like setae; eye without setae; frontal projection with dense erect needle-like or cuneate setae (Fig. 2); clypeus with sparse erect needle-like setae (Fig. 3); maxilla with dense decumbent needle-like setae; labrum with dense decumbent needle-like setae; malar space with sparse suberect cuneate or forked setae (Fig. 4); temple with sparse decumbent needle-like setae; vertex behind ocelli with sparse suberect needle-like setae; vertex with ribbon-like setae, shorter than ribbon-like setae on cervical expansion (Figs 2, 4); cervical expansion with sparse decumbent needle-like setae and ribbon-like setae, longer than ribbon-like setae on vertex; upper gena with ribbon-like setae, as long as ribbon-like setae on pronotum



Figures 6, 7. Mesosoma of *Rhadinoscelidia lixa* sp. nov. (holotype) **6** dorsal **7** lateral. Scale bars: 0.5 mm.

(Fig. 4); lower gena with sparse suberect needle-like setae along occipital carina; scape with sparse decumbent needle-like setae and sparse suberect forked setae (Fig. 5); pedicel with dense decumbent needle-like setae; F with dense decumbent needle-like setae, shorter than each F length (Fig. 5).

Anterior margin of pronotum with ribbon-like setae (Fig. 6), as long as those on lower gena; pronotum with sparse suberect cuneate or forked setae in dorsal view (Fig. 6); pronotum with sparse decumbent cuneate or forked setae in lateral view; propleuron with sparse decumbent cuneate or forked setae (Fig. 1); mesoscutum with sparse suberect forked setae (Fig. 6); tegula with sparse suberect forked setae (Fig. 6); mesopleuron with sparse decumbent cuneate or forked setae; metanotum with sparse suberect forked setae (Fig. 7); propodeum with sparse suberect cuneate setae in lateral view (Fig. 7).

Apical half of fore and midcoxae with dense suberect needle-like setae (Fig. 1); femora with sparse erect or suberect cuneate setae (Fig. 1); apical part of coxae with dense decumbent cuneate setae; tibiae with dense decumbent needle-like setae; tarsomeres with dense decumbent needle-like setae.

T2–T3 with sparse decumbent setae (Fig. 1), shorter than setae on S3–S4; S3–S4 with sparse suberect needle-like setae (Fig. 1); T5 with sparse suberect needle-like setae; S5 with dense suberect needle-like setae.

Coloration. Body reddish-brown (Fig. 1); labial palpi, maxillary palpi, and ribbon-like setae brownish yellow; other setae white; flange yellowish brown.

Male. Unknown.

Etymology. Named after the Latin ‘*lixa*’, meaning camp-follower, referring to the wasp walking near the ant’s trail.



Figure 8. Lateral habitus of *Carebara diversa*. Scale bar: 1 mm.

Distribution. Thailand (Phrae).

Associate. *Carebara diversa* (Hymenoptera, Formicidae) (Fig. 8).

Remarks. *Rhadinoscelidia lixa* sp. nov. is easily distinguished from other species by the following characters: scape 4.3 times as long as width (over 5 times as long as width in other species); short erect setae of antenna; wide ribbon-like setae on temple wider than those on pronotum (shorter than those on pronotum in other species); shorter ribbon-like setae on cervical expansion (relatively longer in other species); straight hindtibia (slightly or moderately curved hindtibia in other species).

Key to species of *Rhadinoscelidia* (modified from Kimsey 2018)

- 1 Eye small and separated by more than half of its diameter from ocelli in lateral view; hindtarsal claw without tooth; vertex rounded and without transverse carina behind hindocelli..... *R. chaesonensis* Kimsey
- Eye larger, separated by half its diameter or less from ocelli in lateral view; vertex angulate and with transverse carina behind hindocelli; hindtarsal claw with a median tooth..... 2

- 2 Scape shorter, 4.3 times as long as wide; pedicel 0.5 times less than F1; OOL 3.0 times as long as LOD; ribbon-like setae of upper gena as wide as those on pronotum; hindtibia almost straight ***R. lixa* sp. nov.**
- Scape longer, more than 5.0 times as long as maximum width; pedicel as long as or slightly shorter than F1; OOL less than 2.0 times as long as LOD; ribbon-like setae of upper gena much shorter than those on pronotum; hindtibia strongly curved..... **3**
- 3 F1 twice as long as broad; frons with Y-shaped carina extending below midocellus..... ***R. halimunensis* Ubaidillah**
- F1 1.3–1.6 times as long as wide; frons with wrinkles or fine carinae diverging from midocellus..... **4**
- 4 Vertex without transverse carina or sharp angle behind ocelli; F11 1.9 times as long as wide ***R. delta* Liu, Yao & Xu**
- Vertex with transverse carina or sharp angle behind ocelli; F11 1.6–1.7 times as long as wide ***R. malaysiae* Kimsey**

Discussion

Comparing *Rhadinoscelidia lixa* sp. nov. with the other four species of *Rhadinoscelidia*, the morphological characteristics of *R. lixa* sp. nov. are more conservative, rather similar to those of the genus *Loboscelidia*. In *Loboscelidia*, there is one record from the nest of the ant *Rhytidoponera metallica* (Smith, 1858) (Riek 1970). However, no information on the biology of *Rhadinoscelidia* has been reported until now (Kimsey 2018). According to observations by the collector, the holotype of *R. lixa* sp. nov. stayed at the entrance of the nest of *Carebara diversa*, and it was not attacked by ants. However, the wings of *R. lixa* sp. nov. were cut off from the basal portion (Fig. 7), probably by ants. Even though this is a singular observation, this may explain why *Rhadinoscelidia* has rarely been collected by previous trap-based surveys.

Sometimes, ants attack the wings of the ant-associate wasps. For example, *Paralipsis enervis* (Nees) (Braconidae) and *Bruchopria hexatoma* Kieffer (Diapriidae) have fully developed wings, but wings are eventually cut off by ants after entering the nest (Starý 1966; Loíacono et al. 2002). Similarly, Takada and Hashimoto (1985) reported that *Paralipsis eikoeae* (Yasumatsu), an associate of *Lasius japonicus* Santschi (*L. niger* (Linnaeus)), had mutilated wings probably caused by ants. These myrmecophilous wasps show strong adaptation to the host ant, including the nutrition change and the mimicry of the cuticular hydrocarbons. As for *C. diversa*, many ant guests have been reported (Kistner 1983; Kistner and Mcnairn 1991; Geiselhardt et al. 2007). Although there is no evidence of the biological relationship between *R. lixa* sp. nov. and *C. diversa*, this observation could be a foothold for further understanding the little-known biology of *Rhadinoscelidia*.

Acknowledgements

We express our cordial thanks to R. Ishikawa for his effort in the field survey, L. S. Kimsey and J.-X. Liu for their valuable comments and suggestions. This study was partially supported by a Sasakawa Scientific Research Grant from The Japan Science Society for YH, KAKENHI (JP19H00942; JP19K06824) and The Asahi Glass Foundation for TM.

References

- Geiselhardt SF, Peschke K, Nagel P (2007) A review of myrmecophily in ant nest beetles (Coleoptera: Carabidae: Paussinae): linking early observations with recent findings. *Naturwissenschaften* 94: 871–894. <https://doi.org/10.1007/s00114-007-0271-x>
- Kimsey LS (1988) Loboscelidiinae, new species and a new genus from Malaysia (Hymenoptera: Chrysididae). *Psyche* 95(1/2): 67–79. <https://doi.org/10.1155/1988/16535>
- Kimsey LS (2012) Review of the odd chrysidid genus *Loboscelidia* Westwood, 1874 (Hymenoptera, Chrysididae, Loboscelidiinae). *ZooKeys* 213: 1–40. <https://doi.org/10.3897/zookeys.213.2985>
- Kimsey LS (2018) Morphology and review of the odd genus *Rhadinoscelidia* Kimsey, 1988 (Hymenoptera, Chrysididae, Loboscelidiinae). *Journal of Hymenoptera Research* 62: 45–54. <https://doi.org/10.3897/jhr.62.20888>
- Kistner DH (1983) A new genus and twelve new species of ant mimics associated with *Pheidologeton* (Coleoptera, Staphylinidae; Hymenoptera, Formicidae). *Sociobiology* 8: 155–198.
- Kistner DH, Mcnairn MJ (1991) A new genus and two new species of predacious Staphylinidae associated with *Pheidologeton* in Sulawesi (Coleoptera: Aleocharinae) with notes on their behavior. *Sociobiology* 18: 305–321.
- Kojima J, Ubaidillah R (2003) Two new species of the cryptic chrysidid parasitoid subfamily Loboscelidiinae: the second species in *Rhadinoscelidia* and the first *Loboscelidia* for the Indonesian fauna. *Entomological Science* 6: 199–207. <https://doi.org/10.1046/j.1343-8786.2003.00023.x>
- Krombein KV (1983) Biosystematic studies of Ceylonese wasps: A monograph of the Amiseginae and Loboscelidiinae (Hymenoptera: Chrysididae). *Smithsonian Contributions to Zoology* 376: 1–79. <https://doi.org/10.5479/si.00810282.376>
- Liu JX, Yao JM, Xu ZF (2011) A new species of the rare chrysidid subfamily Loboscelidiinae from China: the third species of *Rhadinoscelidia* Kimsey, 1988. *ZooKeys* 87: 11–17. <https://doi.org/10.3897/zookeys.87.1295>
- Loiácono MS, Margaría CB, Quiran E, Corro Molas B (2002) Revision of the myrmecophilous diapriid genus *Bruchopria* Kieffer (Hymenoptera, Proctotrupeoidea, Diapriidae). *Revista Brasileira de Entomologia* 46(3): 231–235. <https://doi.org/10.1590/S0085-56262002000300001>
- Masner L, Huggert L (1989) World review and keys to genera of the subfamily Inostemmatinae with reassignment of the taxa to the Platygastriinae and Sceliotrachelinae (Hymenoptera:

- Platygastridae). *Memoirs of the Entomological Society of Canada* 147: 1–214. <https://doi.org/10.4039/entm121147fv>
- Riek EF (1970) Loboscelidiidae. Commonwealth Scientific and Industrial Research Organization (Australia). Division of Entomology, *The Insects of Australia*. Melbourne University Press, Melbourne, 910 pp.
- Stary P (1966) Aphid parasites (Hym., Aphidiidae) and their relationship to aphid attending ants, with respect to biological control. *Insectes Sociaux* 13: 185–202. <https://doi.org/10.1007/BF02223024>
- Takada H, Hashimoto Y (1985) Association of the root aphid parasitoids *Aclitus sappaphis* and *Paralipsis eikoeae* (Hymenoptera, Aphidiidae) with the aphid-attending ants *Pheidole fervida* and *Lasius niger* (Hymenoptera, Formicidae). *Kontyu* 53(1): 150–160.