

# Three new species of the genus *Ripipteryx* from Colombia (Orthoptera, Ripipterygidae)

Nathalie Baena-Bejarano<sup>1,2,3</sup>, Sam W. Heads<sup>1</sup>

**1** Illinois Natural History Survey, University of Illinois at Urbana-Champaign, 1816 South Oak Street, Champaign, Illinois 61820-6960, USA **2** Department of Entomology, University of Illinois at Urbana-Champaign, Morrill Hall, 505 South Goodwin Avenue, Urbana, Illinois 61801-3707, USA **3** Instituto de Ciencias Naturales, Universidad Nacional de Colombia, Bogotá, Colombia

Corresponding author: Nathalie Baena-Bejarano ([ntbaena@gmail.com](mailto:ntbaena@gmail.com))

Academic editor: A. Gorochov | Received 31 October 2014 | Accepted 13 April 2015 | Published 5 May 2015

<http://zoobank.org/3E49E007-D192-4682-8A1B-3FF7194A33FD>

**Citation:** Baena-Bejarano N, Heads SW (2015) Three new species of the genus *Ripipteryx* from Colombia (Orthoptera, Ripipterygidae). ZooKeys 502: 129–143. doi: 10.3897/zookeys.502.8871

## Abstract

Three new species of *Ripipteryx* Newman (Orthoptera: Tridactyloidea: Ripipterygidae) are described from Colombia; namely *R. diegoi* **sp. n.** (Forceps Group) and *R. guacharoensis* **sp. n.** (Marginipennis Group) from Parque Nacional Natural Cueva de los Guacharos in Huila, and *R. gorgonaensis* **sp. n.** (Crassicornis Group) from Parque Nacional Natural Gorgona in Cauca. *Ripipteryx diegoi* **sp. n.** is characterized by the antennae black with white spots on flagellomeres 3–7, male subgenital plate with median ridge forming a bilobed setose process, epiproct produced laterally near its base and phallic complex with virga thickened distally and not reaching beyond the membrane. *Ripipteryx guacharoensis* **sp. n.** is characterized by the antennae thick with white spots present dorsally on flagellomeres 1–4 and 8, epiproct narrow and triangular, uncus reduced and lacking a distal hook, phallic complex with a concave ventral plate and a dorsal elevation in the middle extended to the virga, and the virga itself with two small projections basally. *Ripipteryx gorgonaensis* **sp. n.** is characterized by the epiproct with a lateral notch, antennae with a white dorsal spot on flagellomere 1 and flagellomeres 4–7 entirely white. The antennal color pattern of *R. gorgonaensis* **sp. n.** strongly resembles that of *R. atra* but differs from the latter in the absence of any significant morphological modification of the flagellomeres.

## Resumen

Se describen tres nuevas especies de *Ripipteryx* Newman (Orthoptera: Tridactyloidea: Ripipterygidae) provenientes de Colombia; son nombradas *R. diegoi* **sp. n.** (Grupo Forceps) y *R. guacharoensis* **sp. n.** (Grupo Marginipennis) encontradas en el Parque Nacional Natural Cueva de los Guacharos en Huila

and *R. gorgonaensis* **sp. n.** found in the Parque Nacional Natural Gorgona in Cauca. *Ripipteryx diegoi* **sp. n.** is recognized by presenting black antennae with a white spot on flagellomeres 3–7, subgenital plate with a bilobed medial process with setae, epiproct extended laterally near the base and phallic complex with a thickened distal virga that does not extend beyond the membrane. *Ripipteryx guacharoensis* **sp. n.** is recognized by presenting thick antennae with a white dorsal spot on flagellomeres 1–4 and 8, epiproct narrow and triangular, uncus reduced and without distal hook, and phallic complex with a ventral concave plate and dorsomedial elevation extended to the virga, virga basally with two short points. *Ripipteryx gorgonaensis* **sp. n.** is characterized by presenting epiproct with a lateral notch, antennae with a dorsal white spot on flagellomere 1 and flagellomeres 4–7 completely white. The antennal coloration pattern in *R. gorgonaensis* **sp. n.** is similar to that of *R. atra* but is differentiated from this species by the absence of morphological modifications in the flagellomeres.

### Keywords

Caelifera, Tridactyloidea, species groups, Neotropics, Colombian National Natural Park

### Introduction

*Ripipteryx* Newman, 1834, or mud crickets (Orthoptera: Tridactyloidea: Ripipterygidae), comprises some 45 species of small, dark-colored, cricket-like orthopterans usually found near rivers, in bare soil, and in the moist zones of gallery forests. Like many of their relatives in the larger cosmopolitan family Tridactylidae, the mud crickets are able to jump from the surface of water. The genus is readily distinguished from *Mirhipipteryx*, the only other genus in the family, by its comparatively larger size (body 5.5–14.0 mm long), interocular distance at least half the width of the compound eyes, metatarsus approximately equal in length to the metatibial spurs, and the distinctly sclerotized lateral valvulae of the phallus (Günther 1969; Heads 2010). Species of the genus are usually black or very dark brown, often with contrasting white, yellow and occasionally red markings (Heads 2010). Some species are a dark metallic blue in life, though this coloration often fades to brown or black after death. While ripipterygids are common in many habitats throughout the Neotropics, they are often overlooked by collectors due both to their small size and their fast and very active movements making it difficult to secure specimens. In addition to the paucity of specimens in collections, chronic under-sampling and the difficulty in studying these insects in the field, means that very little is known of their distribution and basic biology (Heads and Taylor 2012; Baena-Bejarano 2015).

The genus is distributed from Mexico to Argentina with their highest diversity found in Ecuador. Some species are very widely distributed (e.g. *R. brunneri* Chopard, 1920, *R. carbonaria* Saussure, 1896, *R. hydrodroma* Saussure, 1896, *R. rivularia* Saussure, 1896, etc.) and are found across large ranges in South and Central America (Günther 1969, 1976, 1980, 1989, 1994), while others are more restricted in distribution. A number of endemic species are known from Peru (*R. difformipes* Chopard, 1956, *R. furcata* Günther, 1976, *R. luteicornis* Chopard, 1920 and *R. vicina* Chopard, 1956), Ecuador (*R. paraprocesata* Günther, 1989, *R. paschoensis* Heads, 2010 and *R. trimacu-*

*lata* Günther, 1969), Brazil (*R. brasiliensis* Günther, 1969, *R. lawrencei* Günther, 1969 and *R. saopauliensis* Günther, 1969) and Colombia (*R. capotensis* Günther, 1970 and *R. sturmi* Günther, 1963) (Günther 1962, 1963, 1969, 1970, 1976, 1989, 1994; Heads 2010). Here, three new species from Colombia are described; namely *R. diegoi* sp. n. and *R. guacharoensis* sp. n. from Parque Nacional Natural Cueva de los Guacharos in Huila, and *R. gorgonaensis* sp. n. from Parque Nacional Natural Gorgona in Cauca.

## Material and methods

The material studied here is deposited in the Instituto de Investigaciones Alexander von Humboldt, Villa de Leyva (IAvH-E) and the entomological museum of Universidad del Valle, Cali (MUSENUV). The male terminalia and the phallic complex were dissected and stored under glycerin in microvials mounted on the pin beneath the specimen. Some specimens were kept in alcohol. The description of morphological characters follows Heads (2010) and Heads and Taylor (2012) (Fig. 1). Interocular distance was measured using a calibrated micrometer slide adapted to a stereomicroscope. Other measurements were made from photographs analyzed with a calibrated digital scale in the program tpsdig2 (Rohlf 2006). Morphological characters were defined and documented in a Delta matrix and the description developed using Delta software (Dallwitz 1980, 1999). Photographs were taken with a Leica digital camera attached to a stereomicroscope and focus-stacked in CombineZP (Hadley 2009). Scanning electron micrographs were produced using FEI Quanta 200 scanning electron microscope. Drawings were produced in Adobe Illustrator CS5 and Photoshop CS5.

## Systematics

### Genus *Ripipteryx* Newman, 1834

### Forceps Group *sensu* Heads, 2010

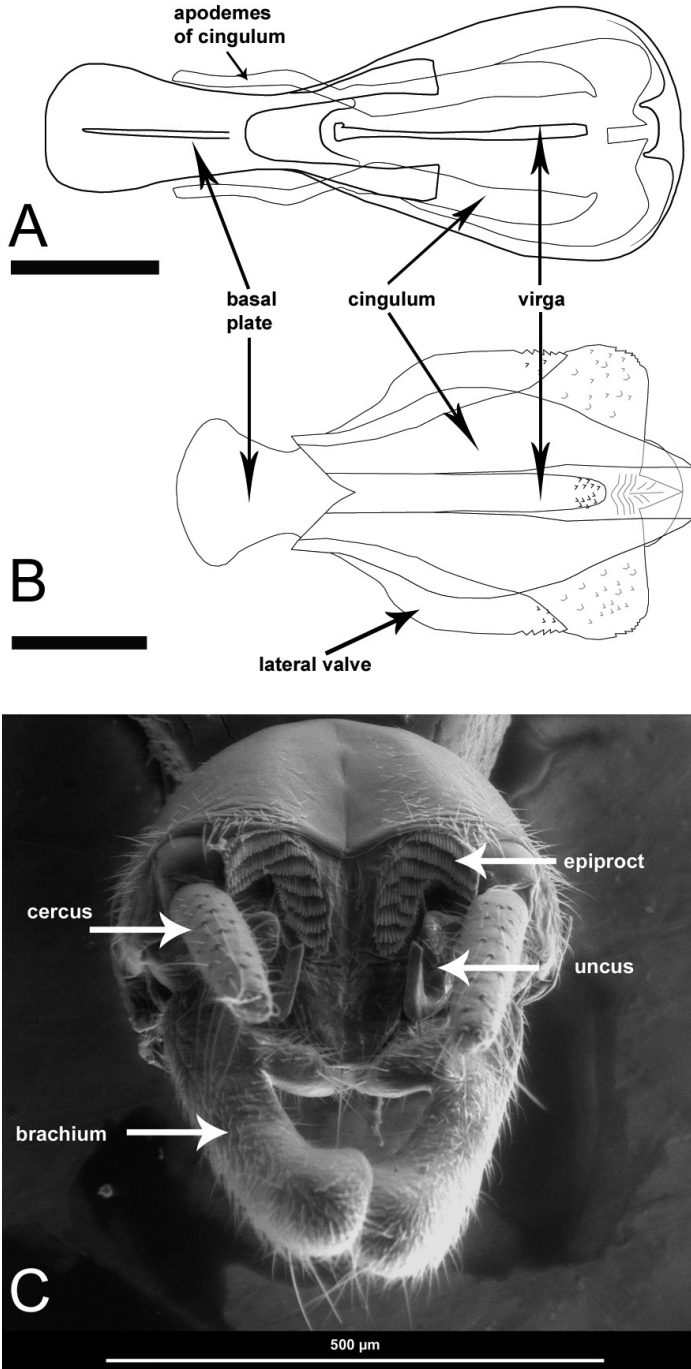
#### *Ripipteryx diegoi* Baena-Bejarano, sp. n.

<http://zoobank.org/9AA81DE2-96FB-463B-9B6A-7123BCCB4972>

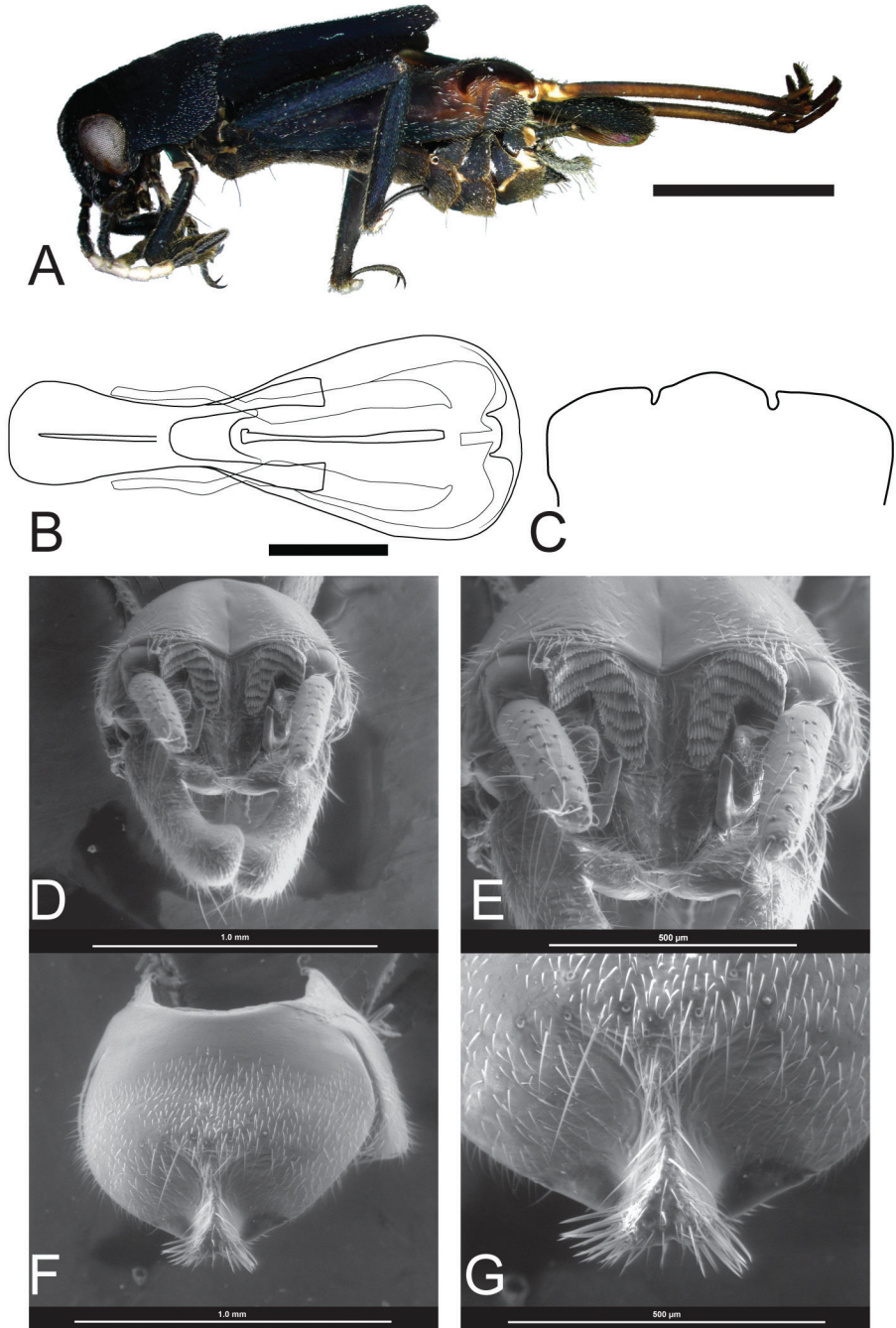
Fig. 2

**Holotype.** ♂ (no. IAvH-E 142877), COLOMBIA, Huila, PNN Cueva de Los Guácharos, Cabaña Cedros, 1°37'N, 76°6'W, 2100 m, Malaise, 6-27.iv.2002, Col. J. Fonseca. Specimen dried and pinned; deposited at Instituto Alexander von Humboldt, Villa de Leyva.

**Paratypes.** Five specimens from same locality as holotype: 1) ♂ (no. IAvH-E 137238), specimen preserved in alcohol; 2) ♂ (no. IAvH-E 137239), specimen preserved in alcohol; 3) ♀ (no. IAvH-E 137240), specimen preserved in alcohol; 4) ♀ (no. IAvH-E 137241), specimen preserved in alcohol; 5) ♀ (no. IAvH-E 142878), specimen dried and pinned. Specimens deposited at same institution as holotype.



**Figure 1.** Genitalia and terminalia with labels indicating main morphological features. **A–B** Comparison of phallic complex in dorsal view **A** *Ripipteryx diegoi* sp. n. (IAvH-E 142877) (Scale bar 0.3 mm) **B** *Ripipteryx guacharoensis* sp. n. (IAvH-E 137238) (Scale bar 0.2 mm) **C** *Ripipteryx diegoi* sp. n. scanning electron micrographs of dissected paratype terminalia (IAvH-E 137238) in dorsal view.



**Figure 2.** *Ripipteryx diegoi* sp. n. **A** Holotype lateral habitus (IAvH-E 142877) (Scale bar 2.3 mm) **B** Dorsal view of holotype phallic complex (IAvH-E 142877) (Scale bar 0.3 mm) **C** Outline of the subgenital plate in females (ventral view) **D–G** scanning electron micrographs of dissected paratype terminalia (IAvH-E 137238) **D** Dorsal view of terminalia **E** Dorsal view of epiproct and uncus **F** Ventral view of subgenital plate **G** Ventral view of medial bifurcated ridge of subgenital plate.



**Diagnosis.** The new species is almost cryptically similar to *R. forceps* Saussure, 1896 in that the uncus is elongate and strongly recurved, and that the median ridge of the male subgenital plate is produced distally, forming a short and densely setose bilobed process. However, it can be readily distinguished from the latter species by [1] antennae with white spots on flagellomeres 3–4 and 6–7 with flagellomere 5 entirely white; [2] epiproct produced laterally near its base; [3] brachium curved along its entire length without prominent apical bulge; and [4] phallic complex with virga thickened distally and not reaching beyond the membrane.

**Description.** *Male* (holotype). Body length including wings 8.1 mm, excluding wings 7.9 mm; pronotum length 1.6 mm, pronotum width 1.9 mm; tegmina length 3.1 mm; hind wings length 6.0 mm; interocular distance 0.39 mm. (n=1) (Fig. 2A).

Head. Interocular distance more than half the eye width. Median ocellus fully developed. Patch that circumscribes anterodorsal margin of compound eyes absent. Internal margin of compound eyes convergent dorsally. Maxillary palp black, five segmented, with second segment reduced. Labial palp black. Gena below the compound eye and antennae insertion black.

Antennae black and filiform. Number of antennae segments 10. Scape wider than pedicel. Pedicel as long as 1<sup>st</sup> flagellomere. White spot on scape absent. White spot on pedicel absent. White dorsal spot on flagellomere 1 and 2 absent. White dorsodistal spot on flagellomere 3 present. Flagellomere 4 white with a brownish slender anterior ring. Flagellomere 5 completely white. Flagellomere 6 white with a brownish slender distal ring extended ventrally to the segment half. Flagellomere 7 and 8 black.

Thorax. Pronotum black. Mesonotum black. Tegmina black. Hind wings with white, transverse groove. Procoxa black. Profemora black with an inner distal white spot. Protibiae black with three distal spines and an anterior external white rounded spot close to tibiae-femora articulation. Mesocoxa black. Mesotrochanter black. Mesofemora black. Mesotibiae black. Metafemora black. Semi-lunar process brown. Metatibia brown. Metatarsi brown and longer than metatibial posterior spurs.

Abdomen. Cerci unsegmented, black. Brachium black with a yellow-white distal spot, in lateral view curved along its entire length without prominent apical bulge. Brachium spine present. Epiproct produced laterally near its base. Epiproct lateral lobes narrow. Medial epiproct (distal section) tongue-like. Uncus not embedded in brachium lobe basis, 1-hooked (Fig. 2D, E). Male subgenital plate with a medial bifurcated ridge covered with setae at rounded end (Fig. 2F, G).

Basal plate heavily sclerotized, long, basally strongly widened and distally strongly split. Cingulum with apodemes elongate and well-sclerotized. Sclerotized region of cingulum discontinuous with a distal membranous region in-between. Virga very slender near base and distally thickened. Virga not extended beyond cingulum (Fig. 2B).

**Variations.** Body length including wings 7.9–8.3 mm, excluding wings 7.6–8.3 mm; pronotum length 1.6–1.7 mm, pronotum width 1.9–2.0 mm; tegmina length 3.1–3.2 mm; hind wings length 5.8–6.0 mm; interocular distance 0.39–0.44 mm. (n=3). Antennae: flagellomere 4 white with a brownish slender anterior ring extended

ventrally to the segment half. Flagellomere 6 white with a brownish slender distal ring extended ventrally over the segment. Flagellomere 7 white dorsal spot on base.

*Female.* Body similar to male, except for antennal sexual dimorphism and abdominal sexual structures. White dorsodistal spot often present on flagellomere 2. Flagellomere 4 to 7 completely white. Subgenital plate smooth with two distal notches forming a rounded lobe in middle (Fig. 2C). The color is a lighter brown close to the notches.

*Females variation.* body length including wings 7.9–8.6 mm, excluding wings 7.2–8.6 mm; pronotum length 1.7–1.8 mm, pronotum width 2.1–2.2 mm; tegmina length 3.4–4.1 mm; hind wings length 5.5–6.1 mm; interocular distance 0.46–0.47 mm. (n=3). Antenna: White dorsal spot on flagellomere 3 sometimes begins from middle. Flagellomere 7 sometimes presents ventral black color.

**Etymology.** The specific epithet is patronymic and honours Señor Diego Baena, father of the senior author, in thanks for his care and dedication.

**Distribution.** This species is currently known from the type locality.

**Sympatric species.** The new species was found in one of the malaise samples together with *R. guacharoensis* and *R. ecuadoriensis*, with which it is believed to live sympatrically.

**Remarks.** *Ripteryx diegoi* sp. n. is assigned to the Forceps group based on the predominately black coloration, the form of the subgenital plate, morphology of the phallic complex and the body size 7.2–8.7 mm. This species is similar to *R. forceps* with which it shares the form of the subgenital plate presenting a median ridge forming a bilobed setose process in ventral view (Fig. 2G). This character allows differentiating it from the other species of the group. Moreover, it differs from *R. forceps* by the shape of the terminalia (Fig. 2D) where the epiproct is produced laterally near its base (Fig. 2E), the brachium in lateral view distally curved without prominent apical bulge; (see Günther 1969). Also, the new species differs in the color pattern of the male antennae with white spots on flagellomeres 3 to 7 of *R. diegoi* while these are present on the flagellomeres 1, 2, 4 and 5 of *R. forceps*.

## Marginipennis Group *sensu* Heads, 2010

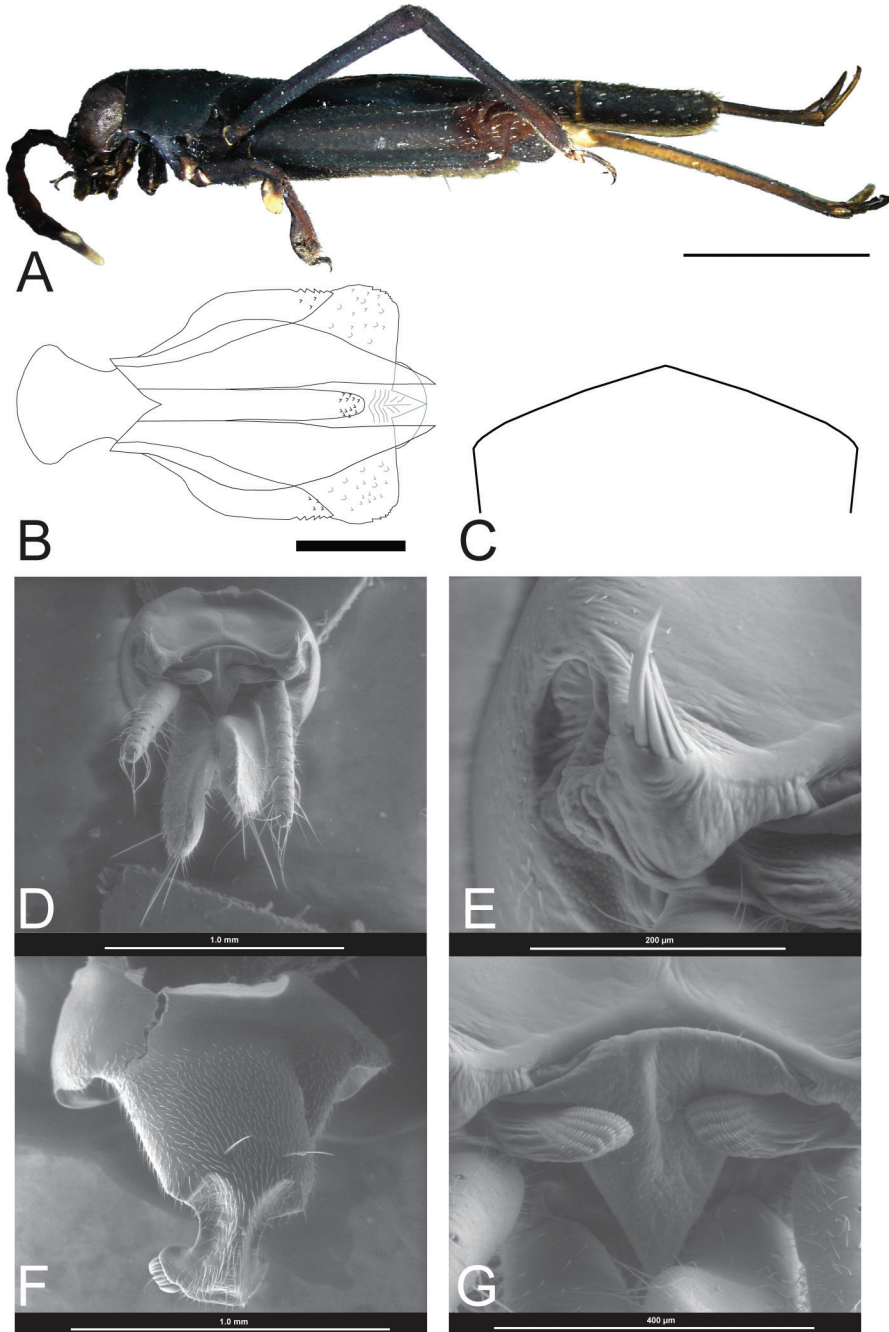
### *Ripteryx guacharoensis* Baena-Bejarano & Heads, sp. n.

<http://zoobank.org/DC599EBF-E57F-4266-94C4-3E849483EB6D>

Fig. 3

**Holotype.** ♂ (no. IAvH-E 113834), COLOMBIA, Huila, PNN Cueva de Los Guácharos, Cabaña Cedros, 1°37'N, 76°6'W, 2100 m, Malaise 2, 28.xi–2.xii.2001, Col. D. Campos. Specimen dried and pinned; deposited at Instituto Alexander von Humboldt, Villa de Leyva.

**Paratypes.** Two specimens from same locality as holotype: 1) ♂ (no IAvH-E 137236), 04–18.ii.2001, Col. D. Cortés, specimen preserved in alcohol; 2) ♀ (no. IAvH-E 137237), 27.iv–5.v.2002, Col. J. Fonseca, specimen preserved in alcohol. Specimens deposited at same institution as holotype.



**Figure 3.** *Ripipteryx guacharoensis* sp. n. **A** Holotype lateral habitus (IAvH-E 113834) (Scale bar 2.2 mm) **B** Dorsal view of phallic complex (IAvH-E 113834) (Scale bar 0.2 mm) **C** Outline of the subgenital plate in females (ventral view) **D–G** scanning electron microscope micrographs of dissected male **D** Dorsal view of terminalia **E** Dorsal view of erect vertical setae at edges **F** Ventral view of subgenital plate **G** Dorsal view of epiproct.



**Diagnosis.** The new species is distinguished from congeners by the following characters: [1] antennae with white dorsal spots on flagellomeres 1–4 and flagellomere 8 black with the distal half completely white; [2] epiproct lateral lobes narrow and posterior margin triangle-like (Fig. 3B); [3] ventral plate concave with a dorsal elevation in the middle extended to the virga; [4] virga basally with two slight tips.

**Description.** *Male* (holotype). Body length including wings 7.55 mm; pronotum length 1.38 mm, pronotum width 1.64 mm; tegmina length 2.91 mm; hind wings length 5.84 mm; interocular distance 0.37 mm. (n=1) (Fig. 3A).

Head. Interocular distance more than half the eye width. Median ocellus fully developed. Internal margins of compound eyes convergent dorsally. Slight yellowish-white spot in the superior eyes corner. Gena below compound eye and antennae insertion black and below eye slightly yellowish. Maxillary palp black, distally slightly yellowish white, five segments with second reduced, fifth with strong setae. Labial palp black.

Antennae thick and mainly black. Number of antennal segments 10. Scape wider than pedicel. Pedicel as long as 1<sup>st</sup> flagellomere. Slight white distal spot on scape. White dorsal spot on pedicel. White dorsal spot on flagellomeres 1, 2 and 3. White dorsodistal spot on flagellomere 4. Flagellomeres 5, 6 and 7 black. Flagellomere 8 black with distal half completely white.

Thorax. Pronotum black with an anterior slender white line and an almost imperceptible yellowish at anterior corners. Tegmina black. Hind wing with white, transverse groove. Procoxa black. Protochanter black. Profemora black with a yellowish serrated distal inner lobe. Protibiae black with three distal spines. Mesocoxa black. Mesotrochanter black. Mesofemora black. Mesotibiae black distally brownish. Metafemora black; Semi-lunar process, metatibia and metatarsi brown.

Abdomen. Tergum 9 with a distal notch. Tergum 10 slightly concave, strongly sclerotized with erect vertical setae at edges (Fig. 3E). Cerci unsegmented, black. Brachium brownish, dorsolateral flat and wide with an inner protrusion. Brachium spine present. Epiproct lateral lobes narrow, covering base of cerci but not covered by tergum. Medial epiproct membranous, narrow and triangle-like (Fig. 3G). Uncus reduced without distal hook. Subgenital plate distally narrowed, constricted before end with conspicuous long and curved bristles (Fig. 3F).

Basal plate heavily sclerotized, very short and widened basally. Cingulum distally serrated without apodemes. Lateral valves pointed and serrated. Virga thick, distally rounded and serrated, basally with two slight tips. Ventral plate concave with a dorsal elevation in middle extended to virga (Fig. 3B).

*Variations.* Body length including wings 8.9 mm, excluding wings 7.2 mm; pronotum length 1.6 mm, pronotum width 1.8 mm; tegmina length 3.3 mm; hind wings length 6.3 mm; interocular distance 0.40 mm. (n=1). Antennae Scape black.

*Female.* Body similar to male except for abdominal sexual structures. Subgenital plate obtuse (Fig. 3C).

*Female variation.* body length including wings 8.5 mm, excluding wings 7.4 mm; pronotum length 1.4 mm, pronotum width 1.9 mm; tegmina length 3.5 mm; hind

wings length 6.7 mm; interocular distance 0.43 mm. (n=1). Antennae: scape black, white dorsodistal spot on pedicel. White dorsal small spot on flagellomeres 1, 2 and 3.

**Etymology.** The specific epithet is derived from the name of the type locality, Parque Nacional Natural Cueva de los Guácharos.

**Distribution.** This species is currently known from the type locality.

**Sympatric species.** This species was found in one of the malaise samples with the species *R. diegoi* and *R. ecuadoriensis*, which are believed to occur sympatrically.

**Remarks.** *Ripteryx guacharoensis* sp. n. is assigned to the Marginipennis group based on the characters of the phallic complex, such as the very short and broad basal plate, the cingulum without apodemes, the presence of lateral valves, and the thickened virga (Fig. 3B).

The new species is similar to *R. femorata* in that both share a serrated distal inner lobe on the profemora, the shape of the male brachium in lateral view, the uncus reduced without distal hook and similar phallic complex (see Günther 1969). Nevertheless, it differs in the form of the ventral plate, which is concave in *R. guacharoensis* but is straight in *R. femorata*. The basal shape of the virga presents two slight tips in *R. guacharoensis* while in *R. femorata* it presents two strong and elongate tips (see Günther 1969). The most significant character separating both species is the posterior margin of the epiproct, which is triangular in *R. guacharoensis* (Fig. 3G) but parabolic in *R. femorata* (see Günther 1969).

According with Günther (1969) *R. femorata* is closely related to *R. vicina* and *R. difformipes*. *Ripteryx guacharoensis* shares with these three species the form of the subgenital plate that in males is distally constricted with conspicuous long and curved bristles, supporting a probable relationship.

## Crassicornis Group *sensu* Heads, 2010

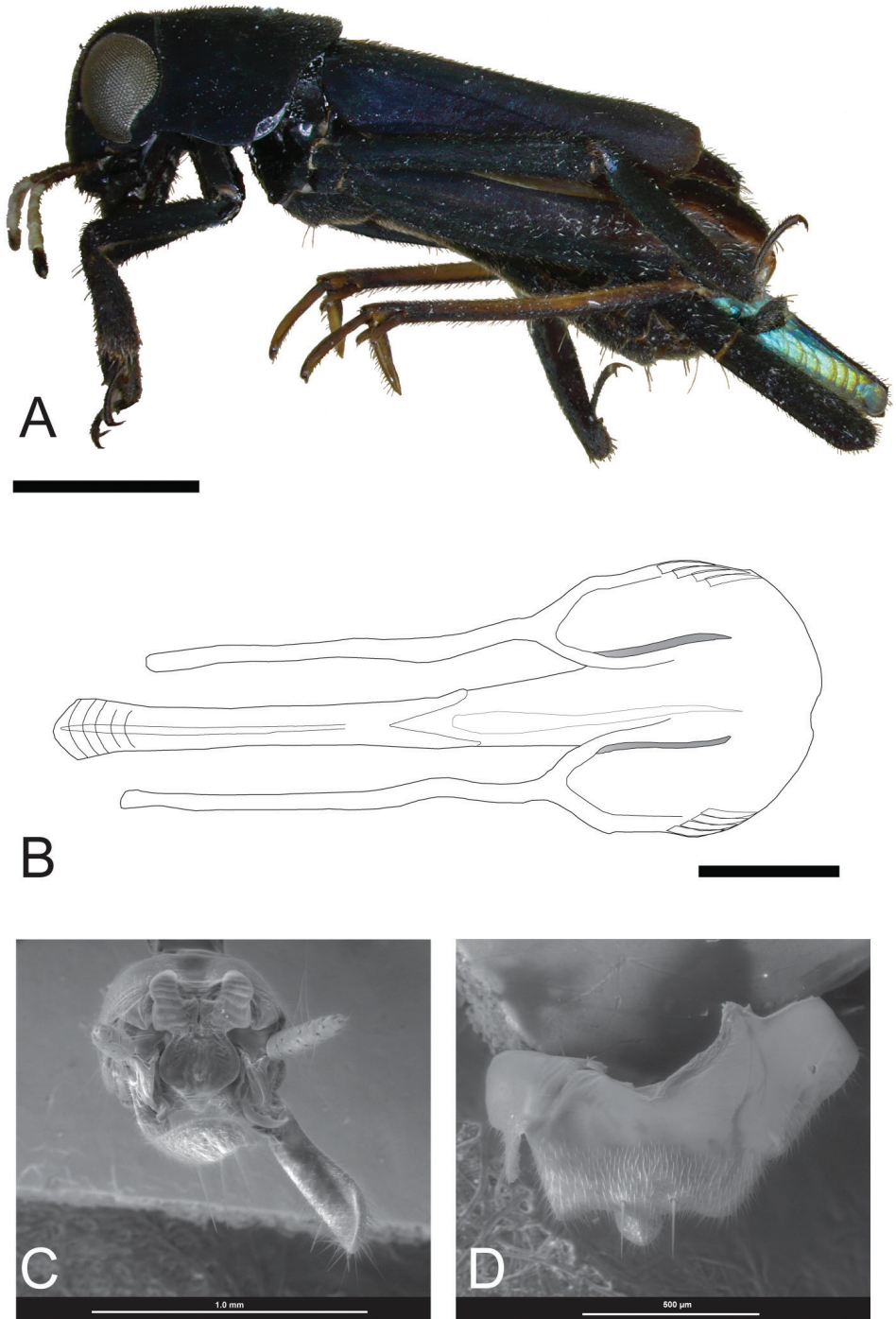
### *Ripteryx gorgonaensis* Baena-Bejarano & Heads, sp. n.

<http://zoobank.org/250F0723-AD54-4DCE-965F-71C5EA962171>

Fig. 4

**Holotype.** ♂ (no. IAvH-E 113896), COLOMBIA, Cauca, PNN Gorgona, Alto el Mirador, 2°58'N, 78°11'W, 180 m, Malaise, 6-20.ix.2000, Col. H. Torres. Specimen dried and pinned; deposited at Instituto Alexander von Humboldt, Villa de Leyva.

**Paratypes.** 5 specimens from same locality as holotype: 1) ♂ (no. IAvH-E 113898), 08-30.xi.2000, specimen dried and pinned; 2) ♂ (no. IAvH-E 113901), 01-04.iii.2000, Col. M. Sharkey, specimen dried and pinned; 3) ♂ (no. IAvH-E 113908), 18.i.2001, specimen dried and pinned; 4) ♂ (no. IAvH-E 113899), 30.x-18.xii.2000, specimen dried and pinned; 5) ♂ (no. IAvH-E 143179), 18.xii.2000-03.i.2001, specimen preserved in alcohol. Specimens deposited at same institution as holotype. 6) ♂ (no. GOR 3728-1), COLOMBIA, Cauca, PNN Gorgona, Sendero cerro Trinidad, 2°58'22"N, 78°10'43"W, 90 m, Captura directa (manual), 21.x.2010, Col. F. Sarria.



**Figure 4.** *Ripteryx gorgonaensis* sp. n. male. **A** Holotype lateral habitus (IAvH-E 113896) (Scale bar 1.44 mm) **B** Dorsal view of phallic complex (IAvH-E 113899) (Scale bar 0.22 mm) **C** Scanning electron micrographs of dissected terminalia in frontal view (IAvH-E 143179) **D** Ventral view of subgenital plate.

Specimen dried and pinned; deposited at Colección de insectos del PNN Gorgona - Museo de Entomología de la Universidad del Valle (MUSENUV), Cali.

**Diagnosis.** The new species is almost cryptically similar to *R. atra* Serville, 1838 sharing with it the coloration of the antennae (white spots on flagellomeres 1 and 4–7). However, it is readily separated from the latter species by [1] flagellomeres 1 and 2 free (not fused as in *R. atra*); and [2] lateral lobes of epiproct with shallow lateral invagination.

**Description.** *Male* (holotype). Body length including wings 6.80 mm, excluding wings 5.72 mm; pronotum length 1.34 mm, pronotum width 1.55 mm, tegmina length 2.84 mm, hind wings length 5.25 mm, interocular distance 0.41 mm (n=1) (Fig. 4A).

Head. Interocular distance more than half the eye width. Median ocellus fully developed. Patch that circumscribes the anterodorsal margin of compound eyes absent. Internal margins of compound eyes convergent dorsally. Patch of setae at posteroventral border of eye present. Maxillary palp black. Four maxillary palps. Labial palp black.

Antennae black and filiform. Number of antennae segments 10. Scape wider than pedicel. Pedicel shorter than 1<sup>st</sup> flagellomere. Flagellomere 2 shorter than 1. White spots on scape and pedicel absent. White dorsal spot on flagellomere 1 present. White dorsal spot on flagellomere 2 and 3 absent. White dorsal spot on flagellomere 4–7 present. White dorsal spot on flagellomere 8 absent. Color of gena below compound eye and antennae insertion black.

Thorax. Pronotum, mesonotum and tegmen black. White transversal groove on hind wings present. Procoxa black. Profemora black with a distal white spot. Protibiae black. Mesocoxa black. Ventral Mesotrochanter black. Mesofemora black. Mesotibiae black. Metafemora black. Semi-lunar process brown. Metatarsi brown.

Abdomen. Cerci unsegmented, black, spots absent. Brachium black, in lateral view with parallel sides. Brachium spine present. Subgenital plate with medial ridge (Fig. 4D). Lateral lobes of epiproct narrow with shallow lateral invagination, not covered by tergum. Medial epiproct tongue-like with a middle lobe (Fig. 4C). Uncus not embedded in brachium basis, 1-hooked.

Basal plate heavily sclerotized, long and narrow; strongly widened distally. Virga very slender not extended beyond cingulum. Cingulum well-sclerotized, but discontinuous; apodemes of cingulum elongate, at base 2-hooked (Fig. 4B).

*Variations.* Body length including wings 6.56–7.74 mm, excluding wings 5.11–7.48 mm; pronotum length 1.24–1.43 mm, pronotum width 1.45–1.66 mm; tegmina length 2.65–3.31 mm; hind wings length 4.97–5.77 mm; interocular distance 0.40–0.44 mm. (n=7).

*Female* unknown.

**Etymology.** The specific epithet is derived from the name of the type locality.

**Distribution.** This species is currently known from the type locality.

**Sympatric species.** *Ripipteryx gorgonaensis* was found in sympatry with the species *R. atra* and *R. nodicornis*.

**Remarks.** The terminalia and the subgenital plate of the new species resemble those of *R. atra*, *R. laticornis* Günther, 1963 and *R. antennata* Hebard, 1924 suggest-

ing placement in the Crassicornis Group. It shares the presence of numerous sharp spiculae on the cingulum with *R. antennata* and *R. atra* and the antennal color pattern with *R. atra*. However, *R. gorgonaensis* differs from the former species by the absence of modifications of the antennae. In other members of the Crassicornis Group, certain antennomeres are fused (e.g. in *R. atra*) or otherwise modified (e.g. flattened and wide in *R. laticornis* and *R. antennata*); this is not the case in *R. gorgonaensis*. The latter is easily distinguished from other species of the Crassicornis and Forceps groups by the form of the terminalia (Figs 4C, D).

A number of soft-bodied mites were found between the metanota and abdomina of some individuals. These are presumed to be ectoparasitic though further research is needed to clarify their biology and interaction with *R. gorgonaensis* (O. Combata pers. comm.).

## Discussion

Five species groups had been proposed in the genus *Ripipteryx* which are largely defined by the morphology of the male terminalia and the phallic complex (Günther 1969; Heads 2010). Of the species described herein, *Ripipteryx diegoi* sp. n. and *R. guacharoensis* sp. n. can be confidently assigned to the Forceps and Marginipennis species groups respectively based on coloration, body size and the morphology of the male terminalia and internal genitalia. In contrast, the species group placement of *R. gorgonaensis* is problematic due to the presence of characters found in both the Crassicornis and Forceps groups such as modified subgenital plate and brachium, distal half of phallic complex weakly sclerotized, long apodemes of the cingulum, virga long and slender. *Ripipteryx gorgonaensis* was assigned to the Crassicornis group because it shares several characters of the terminalia with the species *R. atra*, *R. antennata* and *R. laticornis* and possesses spines on the cingulum like other species in the group. However, it lacks antennal modifications (a diagnostic character of the Crassicornis group) with the antennae more similar to those of Forceps group species. In briefly reviewing Günther's (1969) species group classification, Heads (2010) noted that the monophyly of some of the groups is questionable. Preliminary morphological phylogenetic analysis of the genus (Baena-Bejarano, unpublished) suggest that this is indeed the case, but more morphological and molecular data and a comprehensive phylogenetic treatment are required before a refined classification can be presented.

## Acknowledgements

We are grateful to Carlos Sarmiento, Jhon Jairo Ospina, and members of the laboratory of systematic and comparative biology of insects (UNAL) for helpful discussion and comments on the manuscript. Many thanks also go to M. Jared Thomas for assistance with photography and other illustrations, and Orlando Combata for opinions regarding the mites associated with *R. gorgonaensis*. We thank Sigfrid Ingrisch, Fernando



Montealegre, and anonymous reviewers for their valuable comments and critique of the manuscript, and Hugo Sánchez of the Universidad Nacional de Colombia for assistance with SEM. Partial financial support for this work was provided by Dirección de Investigación Sede Bogotá (DIB) grant 15221 entitled *Relaciones filogenéticas de los géneros y grupos de especies de Rhipipterygidae (Orthoptera: Tridactyloidea) basadas en morfología*; and funding from the Instituto de Investigaciones de Recursos Biológicos Alexander von Humboldt (IAVH) as part of Gestión de Información y Conocimiento (GIC) program. Further thanks are due to Sina Firmenich for assisting the senior author with English translation, and Ranulfo González for his collecting effort.

## References

- Baena-Bejarano N (2015) Aspects of the natural history of *Rhipipteryx* (Orthoptera: Rhipipterygidae) species in Colombia. *Journal of Insect Behavior* 28: 44–54. doi: 10.1007/s10905-014-9479-8
- Dallwitz MJ (1980) A general system for coding taxonomic descriptions. *Taxon* 29: 41–6. doi: 10.2307/1219595, <http://delta-intkey.com>
- Dallwitz MJ, Paine TA, Zurcher EJ (1999 onwards) User's Guide to the DELTA Editor. <http://delta-intkey.com>
- Günther KK (1962) Eine neue *Rhipipteryx*-Art aus Ecuador (Orthoptera, Tridactylidae). *Deutsche Entomologische Zeitschrift* 9: 251–255. doi: 10.1002/mmnd.19620090306
- Günther KK (1963) Über eine tridactyliden-ausbeute aus kolumbien (Orthoptera). *Mitteilungen aus dem Zoologischen Museum in Berlin* 39: 187–201. doi: 10.1002/mmz.19630390104
- Günther KK (1969) Revision der familie Rhipipterygidae Chopard, 1949 (Saltatoria, Insecta). *Mitteilungen aus dem Zoologischen Museum in Berlin* 45: 259–425. doi: 10.1002/mmz.19690450209
- Günther KK (1970) *Rhipipteryx capotensis* n. sp., eine neue Art aus Kolumbien (Rhipipterygidae, Saltatoria, Insecta). *Deutsche Entomologische Zeitschrift* 17: 353–356. doi: 10.1002/mmnd.19700170406
- Günther KK (1976) Beiträge zur Systematik und geographischen Verbreitung der Rhipipterygiden (Rhipipterygidae, Tridactyloidea, Saltatoria). *Mitteilungen aus dem Zoologischen Museum in Berlin* 52(1): 357–369. doi: 10.1002/mmz.19760520208
- Günther KK (1980) Katalog der Caelifera-Unterordnung Tridactyloidea (Insecta). *Deutsche Entomologische Zeitschrift* 27: 149–178. doi: 10.1002/mmnd.19800270114
- Günther KK (1989) Neue und wenig bekannte Tridactyloidea aus Mittel- und Südamerika (Orthoptera: Caelifera). *Deutsche Entomologische Zeitschrift* 36(4-5): 347–379. doi: 10.1002/mmnd.19890360428
- Günther KK (1994) Die Tridactyloidea-Fauna Kolumbiens (Orthoptera, Caelifera). *Deutsche Entomologische Zeitschrift* 1: 1–56. doi: 10.1002/mmnd.19940410102
- Hadley A (2009) CombineZ-Pyramid: <http://www.hadleyweb.pwp.blueyonder.co.uk/CZP/News.htm>

- Heads SW (2010) A new species of *Ripteryx* from the Ecuadorian Andes (Orthoptera: Tridactyloidea: Ripterygidae). *Zootaxa* 2476: 23–29.
- Heads SW, Taylor SJ (2012) A new species of *Ripteryx* from Belize with a key to the species of the Scrofulosa Group (Orthoptera, Ripterygidae). *ZooKeys* 169: 1–8. doi: 10.3897/zookeys.169.2531
- Rohlf FJ (2006) TpsDig version 2.10. Department of Ecology and Evolution, State University of New York at Stony Brook, New York.