

Taxonomic studies on the ant genus *Ponera* Latreille, 1804 (Hymenoptera, Formicidae), with the description of a new species from India

Himender Bharti¹, Joginder Singh Rilta¹

¹ Department of Zoology & Environmental Sciences, Punjabi University, Patiala, Punjab, 147002, India

Corresponding author: Himender Bharti (himenderbharti@gmail.com)

Academic editor: Marek Borowiec | Received 10 February 2015 | Accepted 14 August 2015 | Published 8 October 2015

<http://zoobank.org/1F2A37CA-BAED-4F50-8929-BC01271DCC0F>

Citation: Bharti H, Rilta JS (2015) Taxonomic studies on the ant genus *Ponera* Latreille, 1804 (Hymenoptera, Formicidae), with the description of a new species from India. ZooKeys 526: 9–18. doi: 10.3897/zookeys.526.5971

Abstract

Four species of the ant genus *Ponera* Latreille, 1804, are recorded from India. The present study reports one new species *P. sikkimensis* sp. n., a divergent population of *P. indica* Bharti & Wachkoo, 2012 and one new record, *P. paedericera* Zhou, 2001 from India. An identification key and distributions for the four known Indian species of *Ponera* based on the worker caste are provided.

Keywords

Ponerinae, new record, new species, north-eastern Himalaya

Introduction

The ant genus *Ponera* belongs in subfamily Ponerinae, and is currently represented by 56 extant and five fossil-based species (Bolton 2014). The genus was revised worldwide by Taylor (1967) and since then a number of additional species have been described by various workers (Terayama 1986, 1996, 2009; Perrault 1993; Xu 2001a, b; Zhou 2001; Csösz and Seifert 2003; Dlussky 2009; Bharti and Wachkoo 2012). The worker caste of *Ponera* superficially resembles those of some other Ponerinae genera (*Hypo-*

ponera, *Cryptopone*, *Euponera*, and *Pseudoponera*) but can be distinguished from these due to the presence of an anterior fenestra in the subpetiolar process (a few species of *Hypoponera* apparently possess fenestrae, but lack paired posterior teeth on the subpetiolar process, which is a further character typifying *Ponera*). Additionally, *Ponera* has two maxillary palp segments, while *Hypoponera* has a one-segmented maxillary palp. Some other genera (*Belonopelta* and *Emeryopone*) also have an anterior fenestra in the subpetiolar process, but they have narrow mandibles with long attenuated teeth. *Ponera* differs from them on the basis of its typical triangular mandibles with only short teeth (Schmidt 2013; Schmidt and Shattuck 2014).

Ponera is currently represented by two species described from India: *P. indica* Bharti & Wachkoo, 2012 and *P. taylori* Bharti & Wachkoo, 2012. The present study reports one new species (*P. sikkimensis* sp. n.), a divergent population of *P. indica* Bharti & Wachkoo, 2012 and one new record (*P. paedericera* Zhou, 2001) from India. With the addition of these species, the genus is now represented by four species in India, which are distributed in Himalayan regions. A revised key is provided herewith. Two further species, *P. affinis* Jerdon, 1851 and *P. pumila* Jerdon, 1851 were described earlier from Malabar, India. Due to inadequate original descriptions and a lack of type material these have already been considered *incertae sedis* in the genus (Bharti 2008, 2011; Bharti and Wachkoo 2012).

Materials and methods

The specimens were collected using the Winkler extractor method. Taxonomic analysis was conducted on a Nikon SMZ 1500 stereo zoom microscope with maximum magnification of 112.5×. For digital images, an MP (Micro Publisher) digital camera was used on the same microscope with Auto-Montage software (Syncroscopy, Division of Synoptics, Ltd.). Later, images were cleaned with Adobe Photoshop CS5 and Helicon Filter 5. Holotype of new species has been deposited in PUAC (Punjabi University Patiala Ant Collection at Department of Zoology and Environmental Sciences, Punjabi University, Patiala, Punjab, India). Measurements were recorded in millimeters on a Nikon SMZ 1500 stereo zoom microscope. The comparative morphometric data of the species are listed in Table 1. Morphological terminology for measurements and indices is as follows:

Head Length (HL)	Maximum length of head in dorsal view, measured in as a straight line from the anterior most point of the median clypeal margin to the midpoint of the occipital margin.
Head Width (HW)	Maximum width of head in dorsal view.
Head Size (HS)	Head size, arithmetic mean of HL and HW.
Scape Length (SL)	Maximum length of the scape excluding the basal neck and condyle.

Pronotal Width (PrW)	Maximum width of pronotum in dorsal view.
Weber's Length (WL)	Mesosoma measured in lateral view from the anterior surface of the pronotum (excluding the collar) to the posterior margin of the propodeal lobes.
Petiole Height (PH)	Maximum height of the petiole in profile from the apex of subpetiolar process to dorsal most point.
Petiole Width (PW)	Maximum width of the petiole in dorsal view.
Petiole Length (PL)	In profile, the distance from the midpoints of the curves where the anterior and posterior faces of the node meet the anterior and posterior peduncles.
Cephalic Index (CI)	Cephalic index: $HW \times 100/HL$.
Scape Index (SI)	Scape index: $SL \times 100/HW$.
Petiole Node Index (PNI)	Petiolar node index: $PW \times 100/PrW$.
Lateral Petiole Index (LPI)	Lateral petiolar index: $PL \times 100/PH$.
Dorsal Petiole Index (DPI)	Dorsal petiole index: $PW \times 100/PL$.
Ocular Index (OI)	(sexuals only) Maximum diameter of eye divided by head width.

Acronym of depository

PUAC "Punjabi University Patiala Ant Collection" at Department of Zoology and Environmental Sciences, Punjabi University, Patiala, Punjab, India.

Results

Ponera sikkimensis sp. n.

<http://zoobank.org/FB59D7A2-D2D6-4B82-A1F9-3F2904D7256D>

Figs 1–3

Type locality. India, Sikkim: Phadamchen, 27°12.75'N, 88°37.22'E, 1040 m, leaf litter, Winkler, 30 May 2012, Joginder Singh leg.

Type material. Holotype worker and two paratype workers with same data as of holotype [PUAC].

Holotype measurements. HL 0.42; HW 0.39; HS 0.40; SL 0.30; PrW 0.25; WL 0.52; PH 0.23; PL 0.17; PW 0.18; CI 92.85; SI 76.92; PNI 72; LPI 74; DPI 105.89.

Head: roughly oval in shape, distinctly longer than broad, sides convex, occipital margin concave, occipital corners rounded. Mandibles each with five well-developed teeth, Eyes small, composed of 3–4 indistinct facets. Anterior margin of clypeus concave. Apex of scape does not reach the midpoint of the occipital margin when laid straight back from its insertion in full-face view; funiculus incrassate toward apex; antennal club with four segments.



Figures 1–3. *Ponera sikkimensis* sp. n. worker **1** head in full-face view **2** body in profile view **3** body in dorsal view.

Mesosoma and petiole: In lateral view dorsum of mesosoma weakly convex, in dorsal view promesonotal suture distinct; metanotal groove indistinct. Dorsum of propodeum about as long as declivity, declivity flat, posterodorsal corner rounded. Petiole broader than long in dorsal view, dorsal face convex, in profile view, anterior and posterior faces straight, in dorsal view node roughly semicircular, anterior and lateral borders forming a single arc, posterior border weakly concave. Subpetiolar process with oval fenestra, anteroventral corner blunt, posteroventrally with enlarged teeth.

Gaster: Cinctus of second gastral tergite with cross ribs.

Sculpture: Head, mesosoma and gaster sparsely punctate, Petiolar dorsum more strongly punctate; propodeal declivity, posterior face of petiole and gastral apex smooth and shining. Mandibles shining with scattered punctures.

Pilosity: Dorsum of head, mesosoma, petiole and gaster with dense decumbent pubescence. Erect hairs present on anterior portion of head and posterior half of gaster.

Colour: Head brownish and dull; rest of body light brown and shining; mandibles, antennae and legs yellow.

Etymology. The species is named after the state of Sikkim.

Remarks. *P. sikkimensis* sp. n. is somewhat similar to *P. longlina* Xu, 2001, described from China. It can be distinguished from the latter by the following combination of characters: head roughly oval in shape; mandible with five well-developed teeth, eyes with 3–4 indistinct facets; fenestra in subpetiolar process oval in shape; propodeum and petiole with stronger punctures; petiolar node relatively low and narrow. In *P. longlina* the head is roughly square in shape; mandibles each with three well-developed teeth at the apical margin followed by small denticles; eyes with single facet; fenestra in subpetiolar process circular in shape; propodeum and petiole smooth; petiolar node higher and relatively broad.

Ponera indica Bharti & Wachkoo, 2012

Material examined. India, Sikkim: Phadamchen, 27°12.75'N, 88°37.22'E, 1040 m, leaf litter, Winkler, 1 June 2012, 13 workers and 1 queen, Joginder Singh leg. Holotype worker with labels, “India, Himachal Pradesh, Terrace, 31.9234°N, 75.9294°E, 430 m, 12 October, 2008, Winkler”. Paratypes: 5 workers with same data as of Holotype,

1 worker and 1 gyne, India, Himachal Pradesh, Andretta, 32.0744°N, 76.5856°E, 940 m, 11 June, 2010, hand picking; 5 workers, India, Himachal Pradesh, Mandi, 31.7080°N 76.9318°E, 800 m, 27 June, 2010, soil core (PUAC).

Remarks. The *P. indica* material collected from Sikkim (north-eastern Himalaya) possibly represents a divergent population, as the species was originally described from north-western part of Himalaya. At present, the morphological differences outlined do not substantiate its status as a distinct species. The intraspecific variation includes: head rectangular in shape, occipital margin concave; mandibles each with three well-developed teeth followed by small denticles; fenestra in subpetiolar process circular; standing pilosity sparse; eyes composed of 1-2 indistinct facets; apex of scape does not reach the midpoint of posterior cephalic margin, CI 86.67–90.69; LPI 59.25–75; DPI 104.76–160. However, in the population representing type material of *P. indica*, the head is more oval in shape, the occipital margin straight; and the mandibles each with three well-developed teeth and without small denticles; the subpetiolar fenestra is oval in shape, and pilosity is abundant, eyes composed of 3-4 indistinct facets; apex of scape reaches the posterior cephalic margin, CI 91.3–97.8; LPI 34.5–40; DPI 200–266.7.

Ponera paedericera Zhou, 2001

Figs 4–6

Material examined. India, Arunachal Pradesh: Dirang, 27°21.50'N, 92°14.46'E, 1634m, 29 September 2013, Winkler, 4 workers and 1 queen, Joginder Singh leg.

For complete description see Zhou (2001).

Global distribution. China, India.

Remarks. The Chinese *P. paedericera* Zhou, 2001 is reported here for the first time from India. This species is remarkably different from the other known Indian species with following combination of characters: anterior margin of clypeus with a distinct blunt median tooth; antennal club with 3 segments; posterodorsal corners of propodeum rounded, declivity depressed, lateral sides of propodeum distinctly marginate; anterior face of petiole straight, dorsal and posterior faces form a single arched surface, anterodorsal corner blunt, dorsal surface smooth and shining, subpetiolar process with relatively large posteroventral teeth; head, mesosoma and the two basal segments of gaster densely and finely punctate; blackish in colour.



Figures 4–6. *Ponera paedericera* worker **4** head in full-face view **5** body in profile view **6** body in dorsal view.

Table 1. Average worker measurements with standard deviation and minimum and maximum values in brackets.

Species	HL	HW	HS	SL	P-W	WL	PH	PW	PL	CI	SI	PNI	LPI	DPI
<i>P. indica</i> (type material) (n=12)	0.445±0.009 [0.430,0.460]	0.418±0.0058 [0.410,0.430]	0.432±0.006 [0.420,0.440]	0.315±0.015 [0.280,0.330]	0.302±0.0096 [0.280,0.310]	0.585±0.0018 [0.560,0.610]	0.289±0.008 [0.270,0.300]	0.229±0.001 [0.210,0.240]	0.104±0.009 [0.90,0.120]	94.4±2.24 [91.3,97.8]	74.1±5.2 [65.1,80.5]	74.5±5.12 [67.7,79.3]	36.7±21.37 [34.5,40]	221.4±21.44 [200,266.7]
<i>P. indica</i> (divergent population from North- east Himalaya) (n=13)	0.448±0.0016 [0.43,0.49]	0.396±0.013 [0.37,0.43]	0.421±0.014 [0.41,0.46]	0.289±0.016 [0.27,0.33]	0.248±0.016 [0.22,0.28]	0.55±0.06 [0.51,0.66]	0.246±0.015 [0.22,0.28]	0.216±0.029 [0.18,0.25]	0.166±0.016 [0.15,0.21]	88.35±1.653 [86.67,90.69]	73±3.068 [69.23,76.74]	87.21±9.709 [72.96]	68.11±5.906 [59.25,75]	130.69±19.755 [104.76,160]
<i>P. tajpuri</i> (n=12)	0.650±0.0219 [0.600,0.670]	0.585±0.019 [0.550,0.610]	0.620±0.0150 [0.595,0.640]	0.440±0.001 [0.430,0.460]	0.390±0.008 [0.380,0.400]	0.843±0.042 [0.740,0.890]	0.372±0.016 [0.350,0.390]	0.241±0.011 [0.200,0.260]	0.183±0.015 [0.160,0.200]	89.3±2.81 [83.3,93.8]	75.5±2.56 [71.7,81.8]	62.8±2.11 [60.5, 65]	47.8±2.99 [44.7,52.6]	113.2±9.02 [120,144.4]
<i>P. powdericeni</i> (n=4)	0.735±0.020 [0.71,0.76]	0.602±0.015 [0.59,0.62]	0.667±0.015 [0.65,0.68]	0.485±0.019 [0.47,0.51]	0.41±0.033 [0.37,0.45]	0.802±0.022 [0.78,0.83]	0.38±0.033 [0.34,0.42]	0.395±0.005 [0.39,0.40]	0.267±0.012 [0.25,0.28]	81.98±1.710 [80.26,83.78]	80.55±4.400 [75.80,86.44]	96.75±6.818 [88.89,105.40]	70.85±7.934 [64.28,82.35]	147.89±6.66 [139.28,156]
<i>P. sibkimensis</i> sp.n. (n=3)	0.433±0.011 [0.42,0.44]	0.396±0.005 [0.39,0.40]	0.415±0.008 [0.40,0.42]	0.286±0.011 [0.28,0.30]	0.243±0.011 [0.23,0.25]	0.516±0.005 [0.51,0.52]	0.236±0.011 [0.23,0.25]	0.184 [0.18]	0.17±0 [0.17]	91.55±1.120 [90.91,92.85]	72.30±3.995 [70,69.2]	74.08±3.614 [72,78.26]	80.75±11.853 [73.91,94.44]	105.89±0 [105.89]

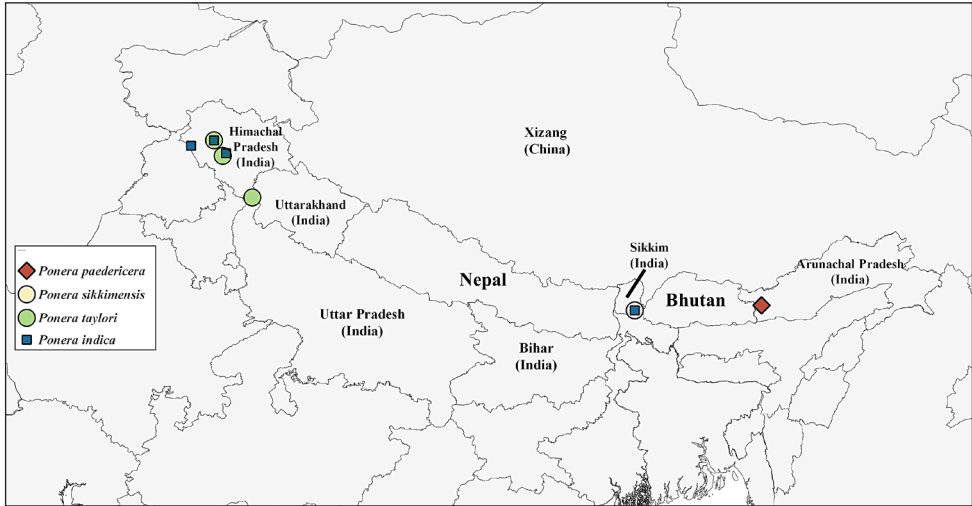
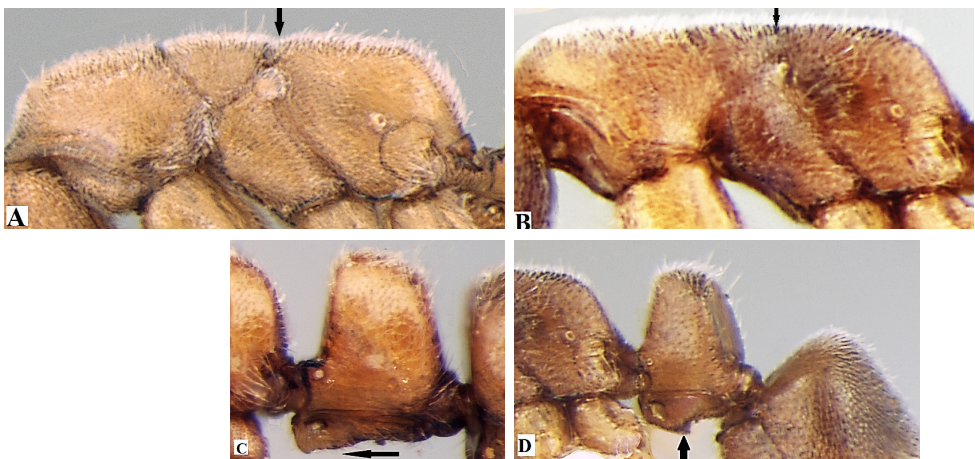


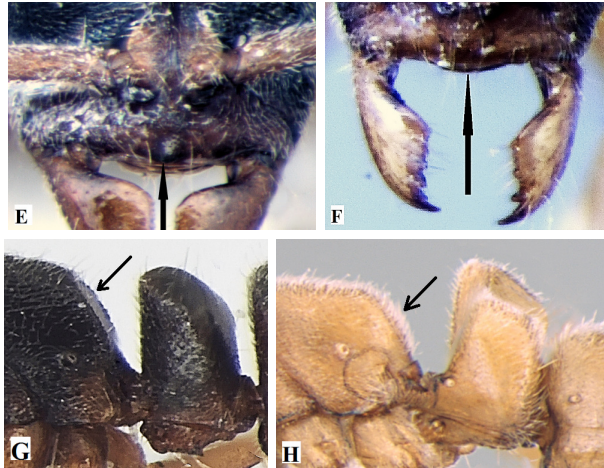
Figure 7. Map showing the localities from which Indian *Ponera* species have been recorded in Indian Himalaya.

Key to the known Indian species of *Ponera* based on worker caste

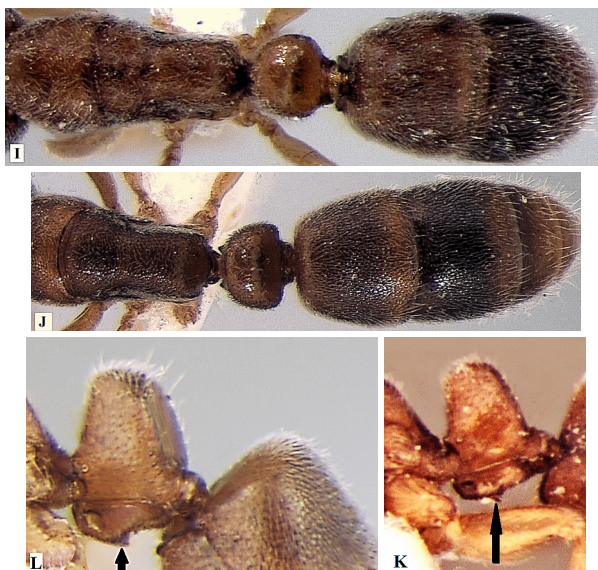
- 1 Eyes absent; metanotal groove distinct (Fig. A); posteroventral teeth of subpetiolar process absent (Fig. C)..... *P. taylora* **Bharti & Wachkoo, 2012**
- Eyes present; metanotal groove indistinct (Fig. B); posteroventral teeth of subpetiolar process present (Fig. D) **2**



- 2 A blunt tooth on clypeal margin present (Fig. E), lateral sides of propodeum distinctly marginate (Fig. G), body blackish in colour.....
 *P. paedericera* Zhou, 2001
- A blunt tooth on clypeus margin absent (Fig. F), lateral sides of propodeum not marginate (Fig. H), body reddish brown to dark brown in colour..... 3



- 3 Mandible with 5 well-developed teeth; mesosoma, petiole, and gaster sparsely punctate (Fig. I), teeth on subpetiolar process directed downward; (Fig. K), DPI=106 *P. sikkimensis* sp. n.
- Mandible with 3 well-developed teeth; mesosoma, petiole, and gaster densely punctate (Fig. J), teeth on subpetiolar process directed backward (Fig. L), DPI: >131–221 *P. indica* Bharti & Wachkoo, 2012



Acknowledgments

We sincerely thank Dr. Steve Shattuck and Dr. Zhenghui Xu for their valuable suggestions. Financial assistance rendered by the Ministry of Environment and Forests (Grant No. 14/35/2011-ERS/RE), Govt. of India, New Delhi is gratefully acknowledged. The authors also thank Dr. Adam Cronin for language correction and Dr. Benoit Guénard for generating distributional map for different species listed in the manuscript. Finally, we are grateful to Govt. of Arunachal Pradesh and Govt. of Sikkim, Department of Forest, Environment and Wildlife Management for granting permission to collect the material, and for other assistance supporting this research.

References

- Bharti H (2008) Altitudinal Diversity of Ants in the Himalayan Regions (Hymenoptera: Formicidae). *Sociobiology* 52(2): 305–322.
- Bharti H (2011) List of Indian Ants (Hymenoptera: Formicidae). *Halteres* 3: 79–87.
- Bharti H, Wachkoo AA (2012) First verified record of genus *Ponera* (Hymenoptera: Formicidae) From India, with description of two new species. *Acta Zoologica Academiae Scientiarum Hungaricae* 58(3): 217–224.
- Bolton B (2014) An online catalogue of the ants of the world. <http://antcat.org> [accessed date: 20 December 2014]
- Csösz S, Seifert B (2003) *Ponera testacea* Emery, 1895 stat. nov. – A sister species of *P. coarctata* (Latreille, 1802) (Hymenoptera: Formicidae). *Acta Zoologica Academiae Scientiarum Hungaricae* 49: 211–223.
- Dlussky GM (2009) The ant subfamilies Ponerinae, Cerapachyinae and Pseudomyrmecinae in the Late Eocene ambers of Europe. *Paleontological Journal* 43: 1043–1086.
- Perrault GH (1993) Peuplement en fourmis de l'atoll de Fangataufa. *Bulletin de la Société Entomologique de France* 98: 323–338.
- Schmidt C (2013) Molecular phylogenetics of ponerine ants (Hymenoptera: Formicidae: Ponerinae). *Zootaxa* 3647(2): 201–250. doi: 10.11646/zootaxa.3647.2.1
- Schmidt CA, Shattuck SO (2014) The higher Classification of the Ant Subfamily Ponerinae (Hymenoptera: Formicidae), with a Review of Ponerinae Ecology and Behaviour. *Zootaxa* 3817(1): 1–242.
- Taylor RW (1967) A monographic revision of the ant genus *Ponera* Latreille (Hymenoptera: Formicidae). *Pacific Insects Monographs* 13: 1–112.
- Terayama M (1986) Two new ants of the genus *Ponera* (Hymenoptera: Formicidae) from Taiwan. *Kontyû* 54: 591–595.
- Terayama M (1996) Taxonomic studies on the Japanese Formicidae, Part 2. Seven genera of Ponerinae, Cerapachyinae and Myrmicinae. *Nature and Human Activities* 1: 9–32.
- Terayama M (2009) A synopsis of the Family Formicidae of Taiwan (Insecta, Hymenoptera). *Liberal Arts, Research Bulletin of Kanto Gakuen University* 17: 81–266.

- Xu Z (2001a) Four new species of the ant genus *Ponera* Latreille (Hymenoptera: Formicidae) from Yunnan, China. *Entomotaxonomia* 23: 217–226.
- Xu Z (2001b) A systematic study on the ant genus *Ponera* Latreille (Hymenoptera: Formicidae) of China. *Entomotaxonomia* 23: 51–60.
- Zhou SY (2001) *Ants of Guangxi*. Guangxi Normal University Press, Guilin, China, 255 pp.