

# Morphological and molecular taxonomy of *Nidularia balachowskii* Bodenheimer (Hemiptera, Coccoidea, Kermesidae) with notes on its life history in Israel

Malkie Spodek<sup>1,2</sup>, Yair Ben-Dov<sup>1</sup>, Murad Ghanim<sup>1</sup>, Zvi Mendel<sup>1</sup>

**1** Department of Entomology, Volcani Center, Agricultural Research Organization, POB 6, Bet Dagan 50250, Israel **2** Department of Entomology, Robert H. Smith Faculty of Agriculture, Food and Environment, The Hebrew University of Jerusalem, POB 12, Rehovot 76100, Israel

Corresponding author: Malkie Spodek (malkiespodek@gmail.com)

---

Academic editor: M. Wilson | Received 6 September 2012 | Accepted 23 November 2012 | Published 21 December 2012

---

**Citation:** Spodek M, Ben-Dov Y, Ghanim M, Mendel Z (2012) Morphological and molecular taxonomy of *Nidularia balachowskii* Bodenheimer (Hemiptera, Coccoidea, Kermesidae) with notes on its life history in Israel. ZooKeys 254: 23–45. <http://dx.doi.org/10.3897/zookeys.254.3959>

---

## Abstract

Descriptions and illustrations of the adult female and first-instar nymph of the kermesid *Nidularia balachowskii* Bodenheimer, based on the adult female lectotype and paralectotype (here designated), and new material collected from Israel are presented. A key for the identification of first-instar nymphs of *Nidularia* spp. is offered. Molecular identification of *N. balachowskii*, using nucleotide sequences from the D2–D3 region of the 28S ribosomal gene, and the mitochondrial Cytochrome Oxidase I (COI) gene, is presented. Morphological and molecular analyses confirm that *N. balachowskii* is closely related to other species within the Kermesidae. In Israel, this species develops only on *Quercus ithaburensis* and is univoltine. This is the first detailed report of *N. balachowskii* from Israel.

## Keywords

Scale insect, *Quercus* spp., morphology, univoltine, monophagous, 28S, COI

## Introduction

*Nidularia* Targioni-Tozzetti, 1868 is one of ten genera of scale insects within the Kermesidae (Hemiptera: Coccoidea). Three species of *Nidularia*: *N. balachowskii* Bodenheimer, 1941, *N. japonica* Kuwana, 1918 and *N. pulvinata* (Planchon, 1864),

have been recorded so far only from the Palaearctic region (Ben-Dov et al. 2012). *Nidularia pulvinata*, the type species of this genus (Signoret 1875, Morrison and Morrison 1966), occurs in western territories of the Palaearctic region, where it has been collected on three oak species, *Quercus coccifera* L., *Q. ilex* L. and *Q. ithaburensis* Decne. (Koteja 1980, Bullington and Kosztarab 1985).

The three species of *Nidularia* have been recorded as follows: *N. pulvinata* from Algeria (Koteja 1980); China (Tang 1984); France, including Corsica (Balachowsky 1933, Foldi 2001, 2003); Italy (Hoy 1963, Viggiani 1991); Portugal (Hoy 1963); Spain (Gomez-Menor Ortega 1937, Hoy 1963); *N. japonica* in China and Japan, on the branches and trunks of several oak species namely, *Quercus acutissima* Carruth., *Q. ailena* Blume, *Q. dentate* Thunb., *Q. fabri* Hance., *Q. glandulifera* Blume (Liu et al. 1997); while *N. balachowskii* has been reported from Turkey (Bodenheimer 1941), Iran and Israel (Bodenheimer 1944) on *Quercus* sp..

The family placement of *Nidularia* has changed over the years. Targioni-Tozzetti (1868) placed this genus in the Coccidae *sensu lato*. Signoret (1875) and Koteja (1974, 1980) restricted it to the Eriococcidae. Currently, it is accepted that this genus belongs to the Kermesidae (Morrison and Morrison 1966, Bullington and Kosztarab 1985, Baer and Kosztarab 1985, Ben-Dov et al. 2012).

Most species of the Kermesidae appear to be univoltine (Balachowsky 1950, 1953, McConnell and Davidson 1959, Hamon et al. 1976, Sternlicht 1969, Koteja 1980, Bullington and Kosztarab 1985, Hu 1986, Kosztarab and Kozár 1988, Viggiani 1991, Liu et al. 1997, Marotta et al. 1999). Females develop through three nymphal instars before reaching maturity (Bullington and Kosztarab 1985). Males are only known for a few species and the remaining species are thought to reproduce parthenogenetically (McConnell and Davidson 1959, Sternlicht 1969, Koteja and Zak-Ogaza 1972, Hamon et al. 1976, Baer and Kosztarab 1985, Hu 1986, Kosztarab and Kozár 1988, Miller and Miller 1993, Liu et al. 1997, Marotta et al. 1999, Turner 2004). Kermesidae are oviparous and, after the female's last molt and before oviposition, the scale's body increases its size and the dorsum becomes convex and sclerotized. The female lays eggs in the brood chamber which is located beneath the female's venter (Bullington and Kosztarab 1985). The size, shape, and color pattern of post-reproductive females varies considerably within the same species (Bullington and Kosztarab 1985).

The body of post-reproducing females may remain on the host tree for a year or more after the emergence of the first-instar nymphs (Baer 1980, authors' observations). Most species of Kermesidae are not known to cause any visible injury to their host trees although there are reports of branch dieback, flagging, reduced growth rates and occasional tree death (Kozár 1974, Hamon 1977, Solomon et al. 1980, Viggiani 1991, Pellizzari et al. 2012). On the other hand, some species of *Kermes* are known for their importance as a source of crimson dye (Amar 2005, Cardon 2007).

The main synapomorphic characters of kermesid adult females have been summarized by several authors including: Ferris (1955), Bullington and Kosztarab (1985), Hodgson (1997) and Miller et al. (2005). They are the presence of: (i) bilocular pores on venter; (ii) simple pores on dorsum; (iii) tubular ducts; (iv) a three-segmented la-

bium with setae; (v) a group of multilocular disc-pores near the base of each antenna; (vi) an anal ring with or without cells and (vii) anal ring with or without setae and absence of: (viii) a spiracular band of quinquelocular disc-pores, (ix) stigmatic spines and (x) ventral microducts.

Species of *Nidularia* share morphological and biological characteristics with other species of the Kermesidae. Like *Kermes* spp., *Nidularia* spp. are monophagous and develop on oak trees. They are known as 'gall-like insects' due to the size and body shape of the convex and sclerotized post-reproductive adult female (Kosztarab and Kozár 1988). They mainly develop in bark crevices, forks between small twigs and buds, and on branches (Bullington and Kosztarab 1985).

Seven species of Kermesidae belonging to two genera, *Kermes* Boitard and *Nidularia* Targioni-Tozzetti, are recorded from Israel (Ben-Dov et al. 2012). Two species, namely *K. greeni* and *K. nahalali*, were originally described from post-reproductive adult females (Bodenheimer 1931), three species: *K. echinatus*, *K. palestiniensis* and *K. spatulatus* were described from the first-instar nymphs (Balachowsky 1953), and one species, *K. bytinskii*, was described from the adult female and all nymphal instars by Sternlicht (1969). *Nidularia balachowskii* was originally described from Turkey (Bodenheimer 1941), and then, in the same year, it was collected in northern Israel at Daphne Oaks, which is today known as Horshat Tal Nature Reserve. Until now, the material collected from Daphne Oaks was the only known record of *N. balachowskii* in Israel.

Between 2010 and 2012, we surveyed the scale insect fauna of various species of oak trees in Israel. *N. balachowskii* was found on branches of *Q. ithaburensis* over a wide range of oak forests in northern Israel. Although Hoy (1963) and Koteja (1980) recorded *N. pulvinata* from Israel, we did not encounter this species during our forest surveys. In addition, no material of *N. pulvinata* from Israel was found among the Kermesidae records of dry material and microscope slides collections examined at the MNHN, BMNH, TAU and ICVI. To date it seems that *N. balachowskii* is the sole *Nidularia* species present in Israel.

Bodenheimer's original description of *N. balachowskii* contains a description and some illustrations of major characters in the adult female (Bodenheimer 1941). His description is short and incomplete. The main objective of this paper is to redescribe *N. balachowskii* and to establish its generic and family placement. Our descriptions and illustrations are based on the lectotype and paralectotype specimens (see Material examined) as well as on fresh material collected from Israel and Turkey. In addition, the first-instar nymph is described and illustrated for the first time. An identification key for the first-instar nymphs of *Nidularia* is provided. We also compare some characters of the adult female of *N. balachowskii* with those of several other species of Kermesidae: *N. pulvinata*, *Kermes roboris* (Fourcroy) (type species of *Kermes*) and *K. quercus* (Linnaeus). In addition, sequences of 28S and COI genes from *N. balachowskii* and five or six other kermesids species plus some scale insect representatives of other Coccoidea families were compared in order to elucidate the family placement of *N. balachowskii*. Information on habitat and life history of *N. balachowskii* in Israel is also provided.

## Material and methods

### Specimen collections

This redescription of *N. balachowskii* is based on type material (see Material examined below), plus specimens from Israel collected by Bodenheimer and fresh material collected in Israel by us. Populations of *N. balachowskii* from *Q. ithaburensis* trees were studied and specimens were collected between 2010 and 2012 from the following nature reserves in northern Israel: Yehudiya Nature Reserve, Golan Heights (32°56'19"N, 35°39'56"E); Horshat Tal Nature Reserve, Upper Galilee (33°13'13.74"N, 35°37'45.65"E); Alonei Abba Nature Reserve, Lower Galilee (32°43'46.2"N, 35°10'18.47"E). Trees at each reserve were surveyed at least once a month and 150–200 branches (20–25 cm in length) were removed at each visit. The branches were taken back to the laboratory in large plastic bags and examined individually under a stereomicroscope for scale insects. Relevant specimens were slide-mounted for microscope examination using the protocol in Ben-Dov, Hodgson (1997). Specimens of *N. pulvinata* (adult females and first-instar nymphs) became available from MNHN. Material of *N. japonica* was not available and comparisons with this species were based on the original description by Kuwana (1918) as well on the redescription by Liu et al. (1997). Dry and mounted material of *N. balachowskii* from Israel, are deposited in the ICVI, BMNH and MNHN.

### Identification and morphological observations

Illustrations of the adult female and the first-instar nymph of *N. balachowskii* are generalizations of several specimens, showing the dorsum on the left and the venter on the right, with enlargements of important structures arranged around the main drawing. The enlarged structures are not drawn to the same scale. Terms for morphological features follow chiefly those of Bullington and Kosztarab (1985), Baer and Kosztarab (1985) and Hodgson (1994). Measurements of specimens and of morphological structures were made using an ocular micrometer on an Olympus BX51 phase contrast microscope. Measurements of structures are given in microns ( $\mu\text{m}$ ) and millimeters (mm). Body length was measured from the farthest points of the head to the posterior end of the body, and body width was the greatest width. Setae lengths were measured from the tip of its base (excluding the setal socket) to the apical tip of the setae. The frequency of each structure is given for the entire body. The range is taken from twenty specimens.

Abbreviations of specimen depositories are as follows: **BMNH** - The Natural History Museum, London, U.K.; **ICVI** - Coccoidea Collection, Department of Entomology, Agricultural Research Organization, Bet Dagan, Israel; **MNHN** - Museum National d' Histoire Naturelle, Paris, France; and **TAU** - Tel Aviv University Insect Collection, Israel.

## Material examined

### *Nidularia balachowskii*

**Turkey:** **Lectotype** female (ICVI), here designated, and **paralectotype** female (MNHN), 21 km at road from Mardin to Diyarbakir, on branches and twigs of *Quercus* sp. (Fagaceae), 13.ii.1939, F.S. Bodenheimer. Bodenheimer (1941) did not select a holotype, and we regard the above-mentioned specimens as the original material studied by him as indicated on the slide labels.

**Additional non-type material** from **Turkey** as follows: Van-Koçet Road (alt. 1625 m) on *Quercus* sp., 19.vii.2005, B. Kaydan (Yuzuncu Yil University, Turkey 2056); Hakkari -Üzümcü Road (alt. 956 m) on *Quercus* sp., 15.ix.2005, B. Kaydan (Yuzuncu Yil University, Turkey 2343); Van-Hakkari Road (alt. 1266 m) on *Quercus* sp., 16.ix.2005, B. Kaydan (Yuzuncu Yil University, Turkey 2370); Hakkari-Doğan (alt. 1032 m) on *Quercus* sp., 22.v.2005, B. Kaydan (Yuzuncu Yil University, Turkey 2688); Bitlis River (alt. 797 m) on *Quercus* sp., 23.vi.2006, B. Kaydan (Yuzuncu Yil University, Turkey 3036); Bitlis-Kavakbaşı (alt. 1365) on *Quercus* sp. 30.v.2007, B. Kaydan (Yuzuncu Yil University, Turkey 3419).

**Israel:** adult female, Daphne Oaks (= current name Horshat Tal Nature Reserve), on *Quercus* sp., 1.v.1939, F.S. Bodenheimer, (ICVI C:4805). This was the first record of this species from Israel. Additional females and first-instar nymphs, all collected off *Q. ithaburensis* by M. Spodek: Yehudiya Nature Reserve, 10.x.2010, 7.xi.2010, 11.i.2011, 6.ii.2011, 16.x.2011, 6.xi.2011, 3.vi.2012, (ICVI C:4891, C:4912, C:4945, C:4970, MC:587, C:4970, MC:690); Horshat Tal Nature Reserve, 30.v.2010, 14.ii.2012, 27.ii.2011, 13.iii. 2012, (ICVI MC:228, MC:614, MC:430, C:5131); Alonei Abba Nature Reserve, 11.1.2011, (ICVI MC:385). First-instar nymphs; Yehudiya Nature Reserve, 6.iii.2010, 20.iii.2011, 24.iii.2012, (ICVI MC:140, MC:460, MC:637); Horshat Tal Nature Reserve, 13.iii.2012, 15.iii.2012, (ICVI MC:635, MC:636).

### Comparative material examined

***Nidularia pulvinata*:** **France:** adult female and first-instar nymphs, Serignan, Vaucluse, on *Q. ilex*, 18.v.1978, I. Foldi (ICVI C:4946); first-instar nymphs, Caumont (Avignon), on *Q. ilex*, 11.iv.1978, D. Matile, J.P. Fabre, (MNHN 7337-4); **Italy:** adult female Pisa, on *Q. ilex*, 5.iv.1988, D. Matile-Ferrero (MNHN10959, ICVI 5060)

***Kermes quercus*:** **Sweden:** adult female, Skan, Near Lund on *Q. robur*, 10.vi.2010, C.A Gertsson (ICVI C:4806); **England:** adult female, Wytham Wood, Berkshire on *Q. robur*, 10.v.1965, S.C. Varley (BMNH 81-539); **Poland:** first-instar nymph, Warsaw on *Q. robur*, 25.viii.1994, E. Podsiadlo (ICVI C:4798)

***Kermes roboris*:** **Hungary:** adult female, Budapest, Plant Protection Institute-adjacent track on *Quercus* sp., 8.vi.1989, C.P. Malumphy (BMNH); **England:** adult female, Kent: Herne Bay on *Quercus* spp., 00.viii.1899, C.D Waterhouse (ICIV C:5071).

## Molecular methods

### Samples

Specimens of the following adult female kermesid species, identified by YBD, were used in the molecular part of this study: *K. nahalali* Bodenheimer, *K. echinatus* Balachowsky, *K. greeni* Bodenheimer, *K. quercus* (Linnaeus), *K. spatulatus* Balachowsky and *N. balachowskii*. Three specimens of each species were used as replicates except for *N. balachowskii*, where six were used. Adult females, preserved in 96% ethanol, were examined under the stereomicroscope for the presence of hymenopteran parasitoid wasps prior to DNA extraction. Voucher specimens were slide-mounted using the cuticle of the actual specimens from which DNA was extracted. Slide mounting followed the protocol outlined in Ben-Dov, Hodgson (1997), and the voucher slides are deposited in the ICVI (Table 1). To provide some taxonomic context to our study, we included also DNA sequences of species belonging to other families within the Coccoidea: Asterolecaniidae, Coccidae, Diaspididae, Eriococcidae, Monophlebidae and Pseudococcidae. A species of aphid, *Acyrtosiphon pisum* (Hemiptera, Aphidoidea), was used as the outgroup species. These sequences were made available from GenBank (Table 1). The sequences of Kermesidae species obtained in this study are deposited in the GenBank under the accession numbers JX436113 - JX436154.

### DNA extraction, amplification and sequencing

DNA was extracted from parasitoid-free adult females using the Cetyl trimethylammonium bromide (CTAB) method (Murray and Thompson 1980). Polymerase chain reaction (PCR) products were generated from the mitochondrial Cytochrome Oxidase I (COI) gene, and a fragment of the D2 and D3 regions of the 28S ribosomal DNA gene. PCR reaction was performed in a total volume of 25  $\mu$ L containing 1 unit of dream Taq polymerase (Fermentas, USA), 2.5  $\mu$ L of enzyme buffer supplemented with MgCl<sub>2</sub>, 0.2  $\mu$ L of 25 mM dNTPs, 0.3  $\mu$ L of 20 pmole for each primer, and 2  $\mu$ L of DNA template. A 900 bp fragment of the 28S ribosomal RNA gene and a 400 bp fragment of the COI gene were amplified and sequenced. Primers for both genes were 28S forward 5'-GAC CCG TCT TGA AAC ACG GA-3' and 28S reverse 5'-TCG GAA GGA ACC AGC TAC TA-3' (Gullan et al. 2010). COI forward 5'-CAA CAT TTA TTT TGA TTT TTT GG-3' (C1-J-2183 aka Jerry) and COI reverse 5'-GCW ACW ACR TAT AKG TAT CAT G-3' (C1-N-2568 aka Ben) (Gullan et al. 2010). The COI barcode region (Herbert et al. 2003) was not used because it has failed to amplify in most scale insects tried to date (Schroer et al. 2008).

The PCR cycling conditions for 28S were 94°C for 4 min, followed by 35 cycles of 94°C for 1 min, 50°C for 1 min, and 72°C for 1.5 min, with a final extension at 72°C for 4 min. The PCR cycling protocol for COI was 95°C for 7 min, followed

**Table 1.** Collection information and GenBank accession numbers for insect samples used in this study.

| Species name                         | Family     | Voucher code | Host tree                   | Location collected          | Date collected | Collector      | GenBank Accession No. 28S | GenBank Accession No. COI |
|--------------------------------------|------------|--------------|-----------------------------|-----------------------------|----------------|----------------|---------------------------|---------------------------|
| <i>Kermes nabalali</i> Bodenheimer   | Kermesidae | C-5111       | <i>Quercus ithaburensis</i> | ISRAEL: Alonei Abba Reserve | 27.ii.2011     | M. Spodek      | JX436134                  | JX436113                  |
| <i>Kermes nabalali</i> Bodenheimer   | Kermesidae | C-5112       | <i>Quercus ithaburensis</i> | ISRAEL: Alonei Abba Reserve | 27.ii.2011     | M. Spodek      | JX436135                  | JX436114                  |
| <i>Kermes nabalali</i> Bodenheimer   | Kermesidae | C-5113       | <i>Quercus ithaburensis</i> | ISRAEL: Alonei Abba Reserve | 27.ii.2011     | M. Spodek      | JX436136                  | JX436115                  |
| <i>Kermes echinatus</i> Balachowsky  | Kermesidae | C-5114       | <i>Quercus calliprinos</i>  | ISRAEL: Alonei Abba Reserve | 19.vi.2011     | M. Spodek      | JX436137                  | JX436116                  |
| <i>Kermes echinatus</i> Balachowsky  | Kermesidae | C-5115       | <i>Quercus calliprinos</i>  | ISRAEL: Alonei Abba Reserve | 19.vi.2011     | M. Spodek      | JX436138                  | JX436117                  |
| <i>Kermes echinatus</i> Balachowsky  | Kermesidae | C-5116       | <i>Quercus calliprinos</i>  | ISRAEL: Alonei Abba Reserve | 19.vi.2011     | M. Spodek      | JX436139                  | JX436118                  |
| <i>Kermes greeni</i> Bodenheimer     | Kermesidae | C-5117       | <i>Quercus calliprinos</i>  | ISRAEL: Hanita              | 8.vi.2011      | M. Spodek      | JX436140                  | JX436119                  |
| <i>Kermes greeni</i> Bodenheimer     | Kermesidae | C-5118       | <i>Quercus calliprinos</i>  | ISRAEL: Hanita              | 8.vi.2011      | M. Spodek      | JX436141                  | JX436120                  |
| <i>Kermes greeni</i> Bodenheimer     | Kermesidae | C-5119       | <i>Quercus calliprinos</i>  | ISRAEL: Hanita              | 8.vi.2011      | M. Spodek      | JX436142                  | JX436121                  |
| <i>Kermes quercus</i> (Linnaeus)     | Kermesidae | C-5120       | <i>Quercus robur</i>        | SWEDEN: Skan, near Lund     | 10.vi.2010     | C. A. Gertsson | JX436143                  | JX436122                  |
| <i>Kermes quercus</i> (Linnaeus)     | Kermesidae | C-5121       | <i>Quercus robur</i>        | SWEDEN: Skan, near Lund     | 10.vi.2010     | C. A. Gertsson | JX436144                  | JX436123                  |
| <i>Kermes quercus</i> (Linnaeus)     | Kermesidae | C-5122       | <i>Quercus robur</i>        | SWEDEN: Skan, near Lund     | 10.vi.2010     | C. A. Gertsson | JX436145                  | JX436124                  |
| <i>Kermes spatulatus</i> Balachowsky | Kermesidae | C-5123       | <i>Quercus ithaburensis</i> | ISRAEL: Horshat Tal Reserve | 3.iv.2011      | M. Spodek      | JX436146                  | JX436125                  |
| <i>Kermes spatulatus</i> Balachowsky | Kermesidae | C-5124       | <i>Quercus ithaburensis</i> | ISRAEL: Horshat Tal Reserve | 3.iv.2011      | M. Spodek      | JX436147                  | JX436126                  |
| <i>Kermes spatulatus</i> Balachowsky | Kermesidae | C-5125       | <i>Quercus ithaburensis</i> | ISRAEL: Horshat Tal Reserve | 3.iv.2011      | M. Spodek      | JX436148                  | JX436127                  |

| Species name                                 | Family           | Voucher code | Host tree                   | Location collected          | Date collected | Collector | GenBank Accession No. 28S | GenBank Accession No. COI |
|--|------------------|--------------|-----------------------------|-----------------------------|----------------|-----------|---------------------------|---------------------------|
| <i>Nidularia balachowskii</i><br>Bodenheimer | Kermesidae       | C-5126       | <i>Quercus ithaburensis</i> | ISRAEL: Yehudiya Reserve    | 11.i.2011      | M. Spodek | JX436149                  | JX436128                  |
| <i>Nidularia balachowskii</i><br>Bodenheimer | Kermesidae       | C-5127       | <i>Quercus ithaburensis</i> | ISRAEL: Yehudiya Reserve    | 11.i.2011      | M. Spodek | JX436150                  | JX436129                  |
| <i>Nidularia balachowskii</i><br>Bodenheimer | Kermesidae       | C-5128       | <i>Quercus ithaburensis</i> | ISRAEL: Alonei Abba Reserve | 27.ii.2011     | M. Spodek | JX436151                  | JX436130                  |
| <i>Nidularia balachowskii</i><br>Bodenheimer | Kermesidae       | C-5129       | <i>Quercus ithaburensis</i> | ISRAEL: Alonei Abba Reserve | 27.ii.2011     | M. Spodek | JX436152                  | JX436131                  |
| <i>Nidularia balachowskii</i><br>Bodenheimer | Kermesidae       | C-5130       | <i>Quercus ithaburensis</i> | ISRAEL: Horshat Tal Reserve | 14.ii.2012     | M. Spodek | JX436153                  | JX436132                  |
| <i>Nidularia balachowskii</i><br>Bodenheimer | Kermesidae       | C-5131       | <i>Quercus ithaburensis</i> | ISRAEL: Horshat Tal Reserve | 14.ii.2012     | M. Spodek | JX436154                  | JX436133                  |
| <i>Kermes nakagawae</i><br>Kuwana            | Kermesidae       |              |                             |                             |                |           | n/a                       | AB439525.1                |
| <i>Bambusaspis militaris</i><br>(Boisduval)  | Asterolecaniidae |              |                             |                             |                |           | GU998966.1                | n/a                       |
| <i>Ceroplastes rubens</i><br>Maskell         | Coccidae         |              |                             |                             |                |           | n/a                       | JQ795720.1                |
| <i>Parulacanium</i> sp.                      | Coccidae         |              |                             |                             |                |           | GU 998968.1               | n/a                       |
| <i>Pelliculaspis celtis</i><br>McDaniel      | Diapsididae      |              |                             |                             |                |           | GQ325525.1                | n/a                       |
| <i>Apionomorpha nookara</i><br>Mills         | Eriococcidae     |              |                             |                             |                |           | n/a                       | JN863289.1                |
| <i>Eriococcus spurtius</i><br>(Modeer)       | Eriococcidae     |              |                             |                             |                |           | GU998969.1                | n/a                       |
| <i>Drosicha mangiferae</i><br>(Green)        | Monophlebidae    |              |                             |                             |                |           | n/a                       | JF792882.1                |
| <i>Phenacoccus parvus</i><br>Morrison        | Pseudococcidae   |              |                             |                             |                |           | n/a                       | JQ863289.1                |
| <b>Outgroup</b>                              |                  |              |                             |                             |                |           |                           |                           |
| <i>Acyrtosiphon pisum</i><br>Harris          | Aphididae        |              |                             |                             |                |           | S50426.1                  | EU701281.1                |



by 40 cycles of 95°C for 1 min, 45°C for 1 min, and 72°C for 1.5 min, with a final extension at 72°C for 5 min. Each reaction was examined by electrophoresis and bands were visualized with UV light. PCR products were excised from the gel and purified using the Zymoclean Gel Extraction Kit (Zymo Research, Irvine, CA). Purified PCR products were sequenced in both the forward and reverse directions at Hy-Labs (Rehovot, Israel).

### Sequence alignment and phylogenetic analysis

Sequence alignments for both 28S and COI gene sequences were performed with MUSCLE 3.7 (Edgar 2004) and the results were adjusted manually where necessary to maximize alignment. The alignment data for each gene were used in maximum likelihood tree construction, using Kimura-2 parameter model (K2P) genetic distances (Kimura 1980). Both trees were generated using MEGA v.5 (Tamura et al. 2011) and branch support was estimated with 1000 bootstrap replicates.

## Results

### Morphological characteristics

#### *Nidularia balachowskii* Bodenheimer

[http://species-id.net/wiki/Nidularia\\_balachowskii](http://species-id.net/wiki/Nidularia_balachowskii)

*Nidularia balachowskii* Bodenheimer, 1941: 78–80.

**Adult female. General appearance. Young, pre-reproductive adult** dorsum brownish and venter yellowish white; oval, soft and flat; 1.2–1.9 mm long and 0.6–0.9 mm wide. Dorsal surface covered with 5 longitudinal rows of rectangular wax plates, each plate about 0.25 mm long and 0.3 mm wide; median row with 11 plates, lateral row on each side of median row with 9–11 plates and marginal rows with 7–9 plates. The wax plates become gradually smaller in size towards anterior and posterior apices and lateral margin (Fig. 1). **Post-reproductive female** oval, moderately convex and sclerotized; 2.75–3.75 mm long, 2–3 mm wide and 0.8–1.8 mm high; 5 longitudinal rows of dark brown wax plates almost fused; with lighter brown wax in between rows of plates (Fig. 2).

**Slide-mounted young adult female** 0.8–3 mm long, 0.5–2.5 mm wide (Fig. 3).

**Margin. Marginal setae**, pointed, 12–13 µm long; placed in a row of 30–36 setae. Stigmatic spines absent. Anal cleft absent.

**Dorsum. Simple pores**, circular, each with a sclerotized rim and 1 µm diameter; covering entire dorsum. Other pore types absent. Dorsal setae absent.



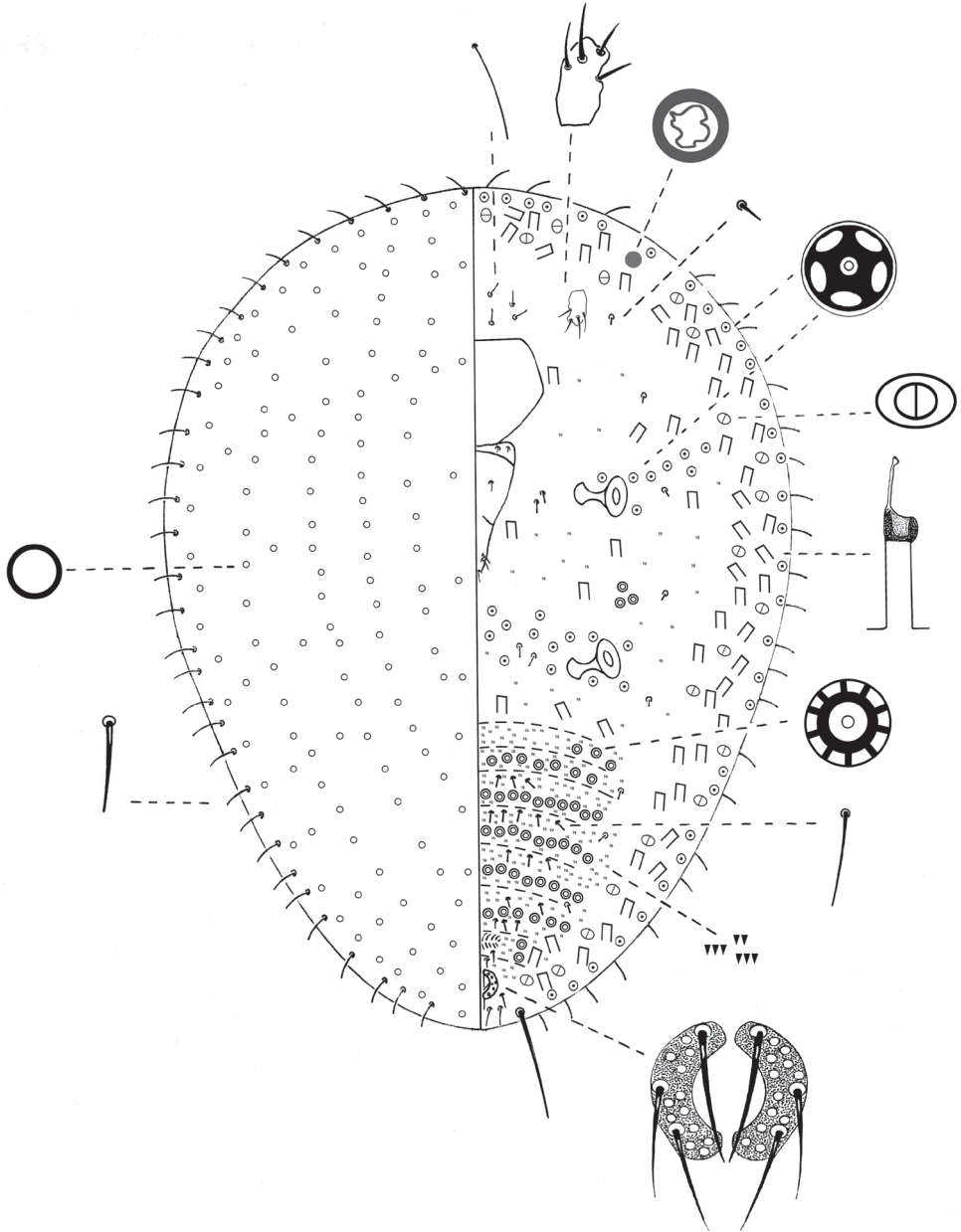
**Figure 1.** *Nidularia balachowskii* Bodenheimer young adult female, general appearance.

**Venter.** **Eyes** circular, 5–7  $\mu\text{m}$  diameter, each placed anterolaterally to each antenna. **Antennae** each 1-segmented, 15–25  $\mu\text{m}$  long, 12–18  $\mu\text{m}$  wide; each bearing 2–6 fleshy setae. **Legs** absent. **Clypeolabral shield** 113–155  $\mu\text{m}$  long, 113–125  $\mu\text{m}$  wide. **Labium** 3-segmented, triangular, 100–125  $\mu\text{m}$  long, 50–63  $\mu\text{m}$  wide; labial setae as follows; basal segment with 2 pairs of hair-like setae, 9–20  $\mu\text{m}$  long, median segment with 1 pair of hair-like setae, 11–13  $\mu\text{m}$  long, apical segment with 6 setae; 2 apical setae, 9–12  $\mu\text{m}$  long plus 4 hair-like; subapical setae, each 12–20  $\mu\text{m}$  long. **Spiracles** subequal in size; each 42–60  $\mu\text{m}$  long, 31–50  $\mu\text{m}$  diameter of peritreme. **Quinquelocular pores** each 5  $\mu\text{m}$  diameter; with 8–11 between mesothoracic spiracles and submarginal band of tubular ducts; 10–13 between the metathoracic spiracles; 2–4 laterad to each metathoracic spiracle; also in a single, complete submarginal band, 1 pore wide from head apex to anal ring; total number of pores per side about 50–71. **Bilocular pores** each about 3  $\mu\text{m}$  wide, totaling 103–135 per side, dispersed within a submarginal tubular duct band. **Multilocular pores** each 7–8  $\mu\text{m}$  in diameter with 9–10 loculi; in groups of 3 or 4 between each metathoracic and mesothoracic spiracle; in transverse bands across abdominal segments arranged as follows; segment III with 3–7, IV with 12–24, V with 14–28, VI with 15–35, VII with 18–25, VIII with 12–19, IX with 2–3 on each side of vulva. **Tubular ducts**



**Figure 2.** *Nidularia balachowskii* Bodenheimer post-reproductive female, general appearance.

dispersed in a complete submarginal band, 2–3 ducts wide, each duct with outer ductule 12–18  $\mu\text{m}$  long and 5  $\mu\text{m}$  wide, a sclerotized cup about 5  $\mu\text{m}$  in diameter and inner ductule about 22–30  $\mu\text{m}$  long; also scattered over thorax. **Other ventral setae:** with a group of 7 or 8 setae, each 7–13  $\mu\text{m}$  long, anterior to clypeus; 1 pair, 7–8  $\mu\text{m}$  long, posterior to each antenna; 8–12 setae, each 5–8  $\mu\text{m}$  long, placed medially to each spiracle; 8 setae, 5–13  $\mu\text{m}$  long, distributed in 1 longitudinal row placed medially to each marginal band of bilocular pores and tubular ducts; each abdominal segment with transverse rows of 4–10 setae, each 7–8  $\mu\text{m}$  long, placed anterior to bands of multilocular pores. **Microspines** present on median and submedian areas of each abdominal segment, in 3–5 transverse rows; each spine about 1  $\mu\text{m}$  long, also scattered on thorax. **Anal ring** located on venter, composed of 2 semi-circles; diameter 27–35  $\mu\text{m}$ ; each half circle bearing 3 pointed setae and 10–12 cells; anterior setae each 25–38  $\mu\text{m}$  long, median and posterior setae each 15–25  $\mu\text{m}$  long; 2 pairs of thin setae just anterior to anal ring, each 7–10  $\mu\text{m}$  long, plus a pair of pointed setae postero-laterally to anal ring, separated by a space about double diameter of anal ring, each 10–13  $\mu\text{m}$  long. Also 1 pair of apical setae, each 65–68  $\mu\text{m}$  long, and 4 setae, each 15–22  $\mu\text{m}$  long, between apical setae, similar in structure to, but longer than, marginal setae.



**Figure 3.** *Nidularia balachowskii* Bodenheimer adult female.

**First-instar nymph. General appearance.** Yellow-greyish, oval and tapering posteriorly 0.38–0.43 mm long and 0.2–0.3 mm wide.

**Slide-mounted specimen.** Oval, 0.42–0.53 mm long and 0.19–0.34 mm wide (Fig. 4).



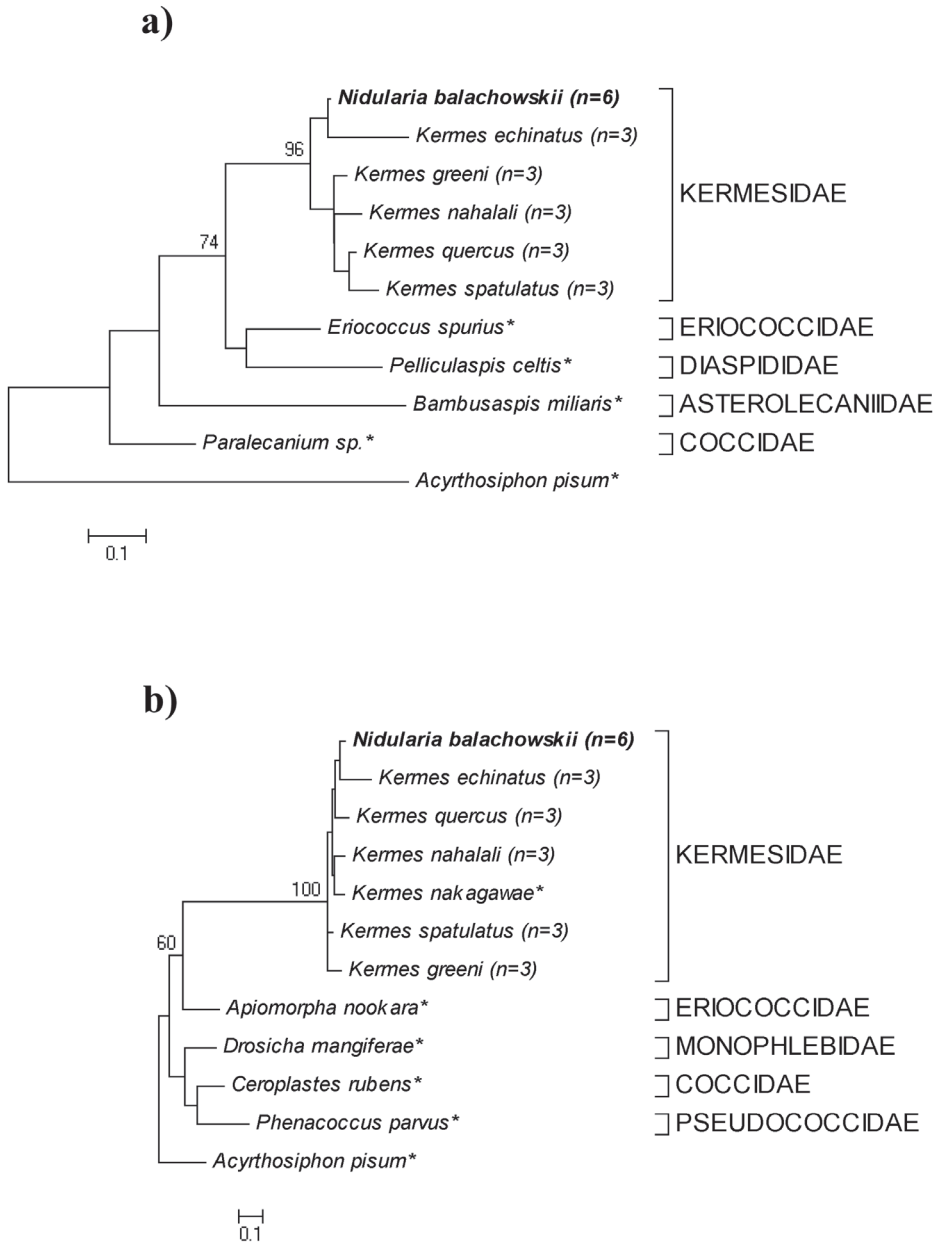
**Margin.** **Marginal setae** sharply spinose, pointed apically and slightly curved; each 9–15  $\mu\text{m}$  long; in a distinct row of 26–33 setae on each margin.

**Dorsum.** Derm membranous; intersegmental lines observable. **Simple pores**, circular with a sclerotized rim, each 1  $\mu\text{m}$  diameter; totaling about 30, scattered over entire dorsum in 4 longitudinal rows; 2 submarginal lines on thorax and abdomen and 2 medial lines on abdomen; with a single pair of submedial setae on each thoracic segment, each 5  $\mu\text{m}$  long.

**Venter.** **Eyes** present as semi-circles near margin, diameter 12–15  $\mu\text{m}$ . **Antennae** each 6-segmented, length 88–125  $\mu\text{m}$ ; segments III and VI longer than other segments; scape with 2 hair-like setae; pedicel with 2 hair-like setae; segment III with 1 long hair-like seta; IV with 1 fleshy seta; V with 1 fleshy seta, 2 hair-like setae and, 1 thick hair-like seta; apical segment with 2 fleshy setae and 5 hair-like setae. **Legs** well-developed; measurements of hind legs; (in  $\mu\text{m}$ ): coxae 25–30, trochanter + femur 63–80, tibia 25–38, tarsus 25–60, claw 13–23; total leg length 158–213; trochanter with 2 oval, sensory pores on each side, each about 2–3  $\mu\text{m}$  wide; setae present on each leg segment; tarsal digitules each 25–30  $\mu\text{m}$  long, knobbed apically, extending beyond apex of claw; claw digitules knobbed apically, each 14–20  $\mu\text{m}$  long, shorter than tarsal digitules; each claw with a single denticle near the tip. **Clypeolabral shield** well-developed; 75–90  $\mu\text{m}$  long and 63–75  $\mu\text{m}$  wide. **Labium** 3-segmented, triangular, 82–100  $\mu\text{m}$  long and 35–38  $\mu\text{m}$  wide; labial setae as follows; basal segment with 2 pairs of setae, each 10–15  $\mu\text{m}$  long, median segment with 1 pair of hair-like setae on dorsal surface, each 10–20  $\mu\text{m}$  long, apical segment with 3 pairs of hair-like setae, 12–17  $\mu\text{m}$  long. **Spiracles** subequal in size; peritreme about 3–5  $\mu\text{m}$  diameter; crescent shaped sclerosis 15–25  $\mu\text{m}$  long. **Bilocular pores**, oval, each 2  $\mu\text{m}$  long and 1  $\mu\text{m}$  wide, with 1 present submarginally about level of each spiracle. **Quinquelocular pores** each 3  $\mu\text{m}$  diameter, as follows; 1 just anterior to each spiracle; 1 medially to each coxa; 2 on each of abdominal segments IV, V, VI. **Microspines** present on median and submedian areas of each abdominal segment, in 2–4 transverse rows; each spine about 1  $\mu\text{m}$  long. **Setae** 1 pair, similar in size and shape to marginal setae, between anterior apex of body and basal segments of antennae; 6 interantennal setae, each 20–30  $\mu\text{m}$  long between basal segments of antennae and anterior apex of clypeus; 1 seta 8–15  $\mu\text{m}$  long medially to each coxa; 2 longitudinal rows, each with 7–8 setae, similar in shape to marginal setae but shorter, each about 8  $\mu\text{m}$  long, extending submarginally from laterad to metathoracic coxae to anterior margin of anal ring, no setae present on most posterior abdominal segment; 2 longitudinal rows of 6 setae, each about 5  $\mu\text{m}$  long, located submarginally on abdomen; 2 longitudinal rows of 4 setae, each about 10  $\mu\text{m}$  long, located submedially on abdomen; plus 2 longitudinal rows of 6 setae, about 17–18  $\mu\text{m}$  long, located medially. **Anal ring** located ventrally; composed of 2 semi-circles; diameter 15–25  $\mu\text{m}$ ; each semi-circle with about 17 cells and 3 pointed setae, subequal in size, each 20–30  $\mu\text{m}$  long. Also with a pair of setae, each 12–15  $\mu\text{m}$  long, anterior to anal ring and 1 pair, each 15–25  $\mu\text{m}$  long, postero-laterally to anal ring. **Anal lobes** well-developed; each lobe bearing 2 pointed setae, 12–15  $\mu\text{m}$  long, distinctly thicker than marginal setae, plus 1 pair of long, apical setae 77–125  $\mu\text{m}$  long.

## Results

### Molecular identification and relationships



**Figure 5.** Maximum likelihood trees of 28S (**a**) and COI (**b**) nucleotide sequences of *N. balachowskii* and other Coccoidea species. *Acyrtosiphon pisum* (Aphididae) sequences are used as outgroup species for both trees. Trees were constructed using K2P distance model and numerical values are bootstrap support, based on 1000 replicates (n= number of replicates, \* = sequences derived from GenBank).

## Molecular results

We obtained a total of forty-two nucleotide sequences from the 28S and COI genes from *N. balachowskii* (six individuals for each gene) and from five adult female Palaearctic Kermesidae species (three individuals for each species for each gene). 28S gene sequences (~700 bp) and COI sequences (~400 bp) from all species were recovered and aligned with sequences of Coccoidea species representing different families (obtained from GenBank). All species for which multiple specimens were sampled showed no interspecies variation. The maximum likelihood analysis of both genes resulted in tree topologies that show that *N. balachowskii* is a distinct species within the monophyletic Kermesidae. *N. balachowskii* is grouped together with other kermesid species and not with the other Coccoidea (Figures 5a+b). The bootstrap value that represents the separation between species of Kermesidae and species from other Coccoidea families is higher in the 28S tree topology, 74, compared to 60 obtained from the COI sequences.

Sequence divergence based on Kimura 2-parameter pairwise distance, between *N. balachowskii* and the other five Kermesidae species ranged from 0.16–0.19 in the 28S gene region. This range is compared to the 0.2–0.3 sequence divergence range between *N. balachowskii* and species from the four other Coccoidea families. In the COI gene region, the sequence divergence between *N. balachowskii* and the six other Kermesidae species ranged from 0.06–0.13 and between *N. balachowskii* and the four species from other Coccoidea families had a sequence divergence range of 0.8–1. Both trees show a strong relationship between *N. balachowskii* and *K. echinatus*, indicating that they are closer to each other than to the other Kermesidae species examined.

## Life history

Observations about the life history of *N. balachowskii* were made in three nature reserves in northern Israel: Alonei Abba Nature Reserve, Horshat Tal Nature Reserve and Yehudiya Nature Reserve. The predominant oak species growing in these reserves is *Q. ithaburensis*. In Alonei Abba Reserve, *Q. calliprinos* trees are also present but they are less common. In Israel, *N. balachowskii* has only been found on the trunks and branches of *Q. ithaburensis*, where *N. balachowskii* is an oviparous and univoltine species.

Gravid females were observed on branches and trunks of trees throughout March, during which time they oviposited 200 to 250 (range from 10 specimens) whitish eggs. Each egg was about 0.4 mm long and 0.2 mm wide. Once all of the eggs have been laid and the brood chamber full of eggs, the female dies and the dorsum becomes sclerotized. The sclerotized, convex body of the dead, post-reproductive female may remain on the host tree for a year or more after first-instar emergence.

Eclosion of first-instar nymphs occurs inside the brood chamber and nymphs emerge from the cavity under the dead female body. This takes place from end of March and throughout April. Crawlers settle in bark crevices on branches and on the trunks of the trees. Young teneral females are found on the branches from June to Feb-



ruary. The females continue feeding and increase in body size throughout this period. Feeding was confirmed by observations of honeydew elimination. By late February, the dorsum of the female begins to expand greatly, increasing in convexity and sclerotization. The ventral surface of the abdomen becomes concave, forming the brood chamber into which the eggs are deposited. The ovipositing female secretes a woolly, white wax that surrounds its body margin. No injury has been observed to the oak hosts by *N. balachowskii* in Israel.

## Discussion

### Life history

We compared our observations of the host plant and development of *N. balachowskii* in Israel to Bodenheimer's 1941 records of this species. In Israel, this scale insect has only been found on the trunks and branches of *Q. ithaburensis* trees, whereas Bodenheimer gives *Quercus* sp. as the host tree in Turkey (Bodenheimer 1941) and Iran (Bodenheimer 1944). The geographical distribution of *Q. ithaburensis* is wide, extending also to Turkey and Iran, and so we may speculate that Bodenheimer's *Quercus* sp. is probably *Q. ithaburensis* ssp. *macrolepis* (Dufour-Dror and Ertas 2004).

We observed that *N. balachowskii* is an oviparous, univoltine species in Israel, similar to Bodenheimer's (1941) observations in Turkey. Earlier observation on the other two species of *Nidularia* indicated that both *N. pulvinata* in Italy (Viggiani 1991) and *N. japonica* in China (Liu et al. 1997) are univoltine. All three species of *Nidularia* have only been recorded so far on oak trees (Ben-Dov et al. 2012). Koteja (1980) redescribed *N. pulvinata* and noted that young specimens were covered with a fragile layer of wax and that, during expansion of the dorsum, this layer breaks into pieces and the females then secrete a nest-like ovisac ventrally and laterally. Kuwana (1918) and Liu et al. (1997) both describe a nest-like ovisac for female *N. japonica*. In Israel, the teneral adult female of *N. balachowskii* also produces a thin layer of dorsal wax but gravid females do not produce a nest-like ovisac. The eggs of *N. balachowskii* are deposited into the egg cavity beneath the venter of the female, as described by Bullington and Kosztarab (1985) and Podsiadlo (2005a) for other kermesid species.

### Morphological characters of adult female

Some morphological characters of adult female *N. balachowskii* are compared with those of *N. pulvinata*, *Kermes quercus* and *K. roboris* (type species of *Kermes*) in Table 2, in order to evaluate the generic and family placement of the former species. All four species possess the following synapomorphic traits: three-segmented labium, bilocular pores on the venter, simple pores on the dorsum, quinquelocular pores surrounding

**Table 2.** Morphological characters of adult females of *Nidularia balachowskii*, *N. pulvinata*, *Kermes quercus* and *K. roboris*.

| Character                          | <i>Nidularia balachowskii</i> | <i>Nidularia pulvinata</i> | <i>Kermes quercus</i>           | <i>Kermes roboris</i>           |
|------------------------------------|-------------------------------|----------------------------|---------------------------------|---------------------------------|
| antennal segments                  | 1                             | 1                          | 4                               | 5–6                             |
| labium segments                    | 3                             | 3                          | 3                               | 3                               |
| ocular pores on spiracle peritreme | absent                        | present                    | absent                          | absent                          |
| ocular pores surrounding spiracles | present                       | present                    | present                         | present                         |
| legs                               | absent                        | absent                     | present                         | present                         |
| bilocular pores on venter          | present                       | present                    | present                         | present                         |
| simple pores on dorsum             | present                       | present                    | present                         | present                         |
| setae -pore clusters on venter     | absent                        | absent                     | present                         | present                         |
| tubular ducts on venter            | 1 type                        | 1 type                     | 2 types                         | 2 types                         |
| anal ring location                 | ventral                       | ventral                    | dorsal                          | dorsal                          |
| anal ring shape                    | 2 semi- circles               | 2 semi-circles             | circular, complete              | 2 semi-circles                  |
| anal ring cells                    | present                       | present                    | absent                          | absent                          |
| anal ring setae                    | 3 pairs setae                 | 3 pairs setae              | setae absent, rare with 2 setae | setae absent, rare with 2 setae |

the spiracles, and tubular ducts on the venter. These characters are some of the synapomorphic characters of kermesid adult females that have been described by Ferris (1955), Koteja (1980), Bullington and Kosztarab (1985) and Hodgson (1997).

Within the genus *Nidularia*, adult female *N. balachowskii* share with *N. pulvinata* the following characters: (i) one-segmented antennae; (ii) absence of legs; (iii) absence of setae-pore clusters on venter; (iv) ventral position of anal ring, and (v) an anal ring with setae and cells, whereas the two *Kermes* species have: four, five or six-segmented antennae, and possess legs, setae-pore clusters on venter, anal ring placed on dorsum, and an anal ring without setae and cells. Comparing *N. balachowskii* and *N. pulvinata*, the most obvious distinguishing feature is the presence of quinquelocular pores on the spiracle peritreme of *N. pulvinata*.

### Morphological characters of first-instar nymphs

The morphological characters of first-instar nymphs of Nearctic kermesids were summarized by Baer and Kosztarab (1985). Kuwana (1931) and Hu (1986) outlined some distinctive characters for separating first-instar nymphs of Oriental species of kermesids, and Balachowsky (1950, 1953) reviewed the characters of first-instar nymphs of some Palaearctic kermesids.

The first-instar nymphs of *N. balachowskii* share the following characters with other Kermesidae species: (i) six-segmented antennae; (ii) three-segmented labium; (iii) simple pores forming longitudinal lines on the dorsum (iv) dorsal setae; (v) anal

ring with cells and setae; (vi) microspines in rows on abdominal segments, and (vii) bilocular pores on venter. This last character is sometimes overlooked.

*Nidularia balachowskii* can be distinguished from other Kermesidae species by the form of its marginal setae. *Nidularia balachowskii* has sharply spinose, apically pointed and slightly curved setae, each 9–15 µm long. This differs from *N. pulvinata* which has hair-like setae (Koteja 1980) and *N. japonica* which has setose setae that are somewhat conical at the base (Kuwana 1918, Liu et al. 1997). The first-instars of Palearctic *Kermes* species that have been described possess conical, hair-like or spatulate marginal setae (Kuwana 1931, Balachowsky 1950, 1953, Sternlicht 1969, Hu 1986, Liu et al. 1997, Podsiadlo 2005b, Pellizzari et al. 2012). There is no unique set of characters that distinguishes the first-instar nymphs of the genus *Nidularia* from the Palearctic *Kermes* examined.

### Key to first-instar nymphs of *Nidularia* species\*

- 1       Quinquelocular pores absent on venter of abdomen...*N. pulvinata* (Planchon)
- Quinquelocular pores present on venter of abdomen.....2
- 2       Marginal setae sharply spinose, apically pointed and slightly curved; quinquelocular pores, six, on venter of thorax only...*N. balachowskii* Bodenheimer
- Marginal setae setose and somewhat conical at base; quinquelocular pores, eight, on venter of head and thorax.....*N. japonica* Kuwana

\* Characters of *N. japonica* based on illustrations and descriptions by Kuwana (1918) and Liu et al. (1997).

### Molecular analysis

The DNA-sequence data for *N. balachowskii*, six other species of Palearctic Kermesidae, and species representing six other Coccoidea families showed that gene fragments of both COI and 28S separated *N. balachowskii* from other Coccoidea species, and clearly placed *N. balachowskii* in the Kermesidae. This study confirms that *N. balachowskii* is a distinct species, clearly distinguishable from other closely-related kermesid species.

### Conclusion

Based on both the morphological and molecular studies of *N. balachowskii*, the identity of *N. balachowskii* and its placement in the Kermesidae has been substantiated, and we have shown that *N. balachowskii* is congeneric with *N. pulvinata*.

## Acknowledgements

This work was funded by Keren Kayemeth LeIsrael (Project # 131-1621-11) and the Israel Taxonomy Initiative. This manuscript is part of the PhD thesis for the senior author. *We thank those who helped us obtain specimens and slide material for this study:* Carl-Axel Gertsson (Murarevägen 13, SE-227 30 Lund, Sweden), Bora Kaydan (Yuzuncu Yil Universty, Agriculture Faculty, Plant Protection Dept. Kampus, Van, Turkey); Jon Martin (BMNH); Imre Foldi and Daniele Matile-Ferrero (MNHN); Elzbieta Podsiadlo (Agricultural University of Warsaw, Department of Zoology, Ul. Ciszewskiego 8, 02-766 Warszawa, Poland). We also thank Adi Faigenboim, Ionit Iberkleid and Adi Kliot for phylogenetic analysis consultation and Alex Protasov for his photographic skills and technical support (Volcani Center, P.O. Box 6, Bet Dagan 50250, Israel). Collection permits for nature reserves were kindly provided by the Israel Nature and Parks Authority.

## References

- Amar Z, Gottlieb H, Varshavsky L, Iluz D (2005) The Scarlet Dye of the Holy Land. *BioScience* 55 (12): 1080–1083. [http://dx.doi.org/0006-3568\(2005\)055\[1080:TSDOTH\]2.0.CO;2](http://dx.doi.org/0006-3568(2005)055[1080:TSDOTH]2.0.CO;2)
- Baer RG (1980) A new species of gall-like coccid from southeastern United States. *Journal of Georgia Entomological Society* 15 (1): 20–25.
- Baer RG, Kosztarab, M (1985) Studies on the morphology and systematics of scale insects – No. 12. II. A morphological and systematic study of the first and second instars of the family Kermesidae in the Nearctic region (Homoptera, Coccoidea). *Bulletin of the Virginia Polytechnic Institute and University Research Division* 85: 119–261.
- Balachowsky AS (1933) Les coccides des Iles d’Hyères (Contribution a l’étude des coccids de France, 16e note). *Annales de la Société d’Histoire Naturelles de Toulon* 17: 78–84.
- Balachowsky A (1950) Les *Kermes* (Hom, Coccoidea) des chenes en Europe et dans le bassin Mediterranean. *Proceedings of the International Congress of Entomology* 8: 739–754.
- Balachowsky A (1953) Sur les *Kermes* Boitard (Hom, Coccoidea) des Chenes du Bassin Oriental de la Mediterranee. France. *Revue de Pathologie Végétale et d’Entomologie Agricole de France* 32: 181–182.
- Ben-Dov Y, Hodgson CJ (1997) Collecting and mounting. In: Ben-Dov Y, Hodgson CJ (Eds) *Soft Scale Insects – Their Biology, Natural Enemies and Control*. Volume 7A, Elsevier, Amsterdam, New York, 389–395. [http://dx.doi.org/10.1016/S1572-4379\(97\)80067-X](http://dx.doi.org/10.1016/S1572-4379(97)80067-X)
- Ben-Dov Y, Miller DR, Gibson GAP (2012) ScaleNet: a Database of the Scale Insects of the World. Scales in a Region Query Results. <http://www.sel.barc.usda.gov/scalenet/scalenet.htm> [accessed at March, 2012]
- Bodenheimer FS (1931) Zur Kenntnis de paläarktischen *Kermes*-arten (Rhy. Cocc.) *Konowia* 10 (4): 241–247.

- Bodenheimer FS (1941) Seven new species of Coccidae from Anatolia. *Revue de la Faculté des Sciences de l'Université d'Istanbul* 6: 65–84.
- Bodenheimer FS (1944) Note on the Coccoidea of Iran, with description of new species. *Bulletin de la Société Fouad d'Entomologie* 28: 85–100.
- Bullington SW, Kosztarab M (1985) A revision of the family Kermesidae (Homoptera) in the Nearctic Region based on adult and third instar females). *Bulletin of the Virginia Polytechnic Institute and University Research Division* 85: 1–118.
- Cardon D (2007) *Natural Dyes – Sources, Tradition, Technology, Science*. Archetype Publications, London, 800 pp.
- Dufour-Dror JM, Ertas A (2004) Bioclimatic perspectives in the distribution of *Quercus ithaburensis* Decne. subspecies in Turkey and in the Levant. *Journal of Biogeography* 31: 461–474. <http://dx.doi.org/10.1046/j.0305-0270.2003.01036.x>
- Edgar RC (2004) MUSCLE: multiple sequence alignment with high accuracy and high throughput. *Nucleic Acids Research* 32: 1792–1797. <http://dx.doi.org/10.1093/nar/gkh340>
- Ferris GF (1955) *Atlas of the scale insects of North America*. Stanford University Press, Palo Alto, California, Volume VII, 233 pp.
- Foldi I (2001) Liste des cochenilles de France (Hemiptera, Coccoidea). *Bulletin de la Société Entomologique de France* 106 (3): 303–308.
- Foldi I (2003) Les cochenilles de Corse (Hemiptera, Coccoidea). *Bulletin de la Société Entomologique de France* 108 (2): 147–156.
- Gomez-Menor Ortega J (1937) *Coccidos de España*. Instituto de Investigaciones Agronomicas, Estacion, Madrid, 432 pp.
- Gullan PJ, Kaydan MB, Hardy NB (2010) Molecular phylogeny and species recognition in the mealybug genus *Ferrisia* Fullaway (Hemiptera, Pseudococcidae). *Systematic Entomology* 35: 329–339. <http://dx.doi.org/10.1111/j.1365-3113.2009.00513.x>
- Hamon AB, Lambdin PL, Kosztarab M (1976) Life history and morphology of *Kermes kingii* in Virginia (Homoptera, Coccoidea, Kermesidae). *Bulletin of the Virginia Polytechnic Institute and State University Research Division* 111: 1–31.
- Hamon AB (1977) Gall-like scale insects (*Kermes* spp.) (Homoptera, Coccoidea, Kermesidae). *Entomology Circular* 178: 1–2.
- Herbert PDN, Cywinska A, Ball SL, deWaard JR (2003) Biological identifications through DNA barcodes. *Proceedings of the Royal Society of London Series B* 270: 313–321. <http://dx.doi.org/10.1098/rspb.2002.2218>
- Hodgson CJ (1994) *The scale insect family Coccidae: an identification manual to genera*. CAB International, Wallingford, Oxon, 639 pp.
- Hodgson CJ (1997) Classification of the Coccidae and related coccoid families. In: Ben-Dov Y, Hodgson CJ (Eds) *Soft Scale Insects: Their Biology, Natural Enemies and Control*, Vol. 7A. Elsevier, Amsterdam, New York, 157–201. [http://dx.doi.org/10.1016/S1572-4379\(97\)80050-4](http://dx.doi.org/10.1016/S1572-4379(97)80050-4)
- Hoy JM (1963) A catalogue of the Eriococcidae (Homoptera, Coccoidea) of the world. *New Zealand Department of Scientific and Industrial Research Bulletin* 150: 1–260.

- Hu X (1986) Studies on gall-like scale insects, with descriptions of three new species from Shandong, China (Homoptera, Coccoidea, Kermesidae). *Entomotaxonomia* 8: 291–316.
- Kimura M (1980) A simple method for estimating evolutionary rates of base substitutions through comparative studies of nucleotide sequences. *Journal of Molecular Evolution* 16: 111–120. <http://dx.doi.org/10.1007/BF01731581>
- Kosztarab M, Bullington SW (1987) Mouth structure and relationships in the Kermesidae (Homoptera), with a key to the world genera. *Bollettino del Laboratorio di Zoologia Generale e Agraria “Filippo Silvestri”* 43: 23–27.
- Kosztarab M, Kozár F (1988) Scale Insects of Central Europe. Series Entomologica, Volume 41, Junk, Dordrecht, 456 pp.
- Koteja J (1974) On the phylogeny and classification of the scale insects (Homoptera, Coccinea) (discussion based on the morphology of the mouthparts). *Acta Zoologica Cracoviensia* 19: 267–325.
- Koteja J (1980) The genus *Nidularia* Targioni-Tozzetti, 1869 (Homoptera, Coccinea). *Annalen des Naturhistorischen Museums in Wien* 83: 589–596.
- Koteja J, Zak-Ogaza B (1972) Morphology and taxonomy of the male *Kermes quercus* (L.) (Homoptera, Coccoidea). *Acta Zoologica Cracoviensia* 17: 193–215.
- Kozár F (1974) Mass infestation and damage of the oak scale *Kermes quercus* L. (Homoptera, Coccoidea). *Novenyvedelem* 10: 534–537.
- Kuwana SI (1918) New scale insect of *Quercus glandulifera*. *Insect World* 22: 312–314. [in Japanese]
- Kuwana SI (1931) The genus *Kermes* of Japan. *Scientific Bulletin (Ministry of Agriculture and Forestry, Japan)* 2: 15–29.
- Liu YJ, Liu YS, Shi YL, Cui J (1997) A morphological study of *Nidularia japonica* Kuwana (Homoptera, Coccoidea, Kermesidae). *Entomological Journal of East China* 6 (1): 15–19. [in Chinese, English abstract]
- Marotta S, Ripullone F, Tranfaglia A (1999) Osservazioni bio-etologiche su *Kermes vermilio* (Planchon) (Homoptera, Coccoidea, Kermesidae) dannoso ai lecci in Basilicata. *Phytophaga Palermo* 9: 63–83.
- McConnell HS, Davidson JA (1959) Observations on the life history and morphology of *Kermes pubescens* Bogue (Hemiptera, Coccoidea, Dactylopiidae). *Annals of the Entomology Society of America* 52: 463–468.
- Miller DR, Miller GL (1993) Description of a new genus of scale insect with a discussion of relationships among families related to the Kermesidae (Homoptera, Coccoidea). *Systematic Entomology* 18 (3): 237–251. <http://dx.doi.org/10.1111/j.1365-3113.1993.tb00664.x>
- Miller DR, Gimpel ME, Rung A (2005) A systematic catalogue of the Cerococcidae, Halimococcidae, Kermesidae, Micrococcidae, Ortheziidae, Phenacoleachiidae, Phoenicococcidae and Stictococcidae (Hemiptera, Coccoidea) of the world. Intercept Limited, Wimbourne, 554 pp.
- Morrison H, Morrison ER (1966) An annotated list of generic names of the scale insects (Homoptera, Coccoidea). *Miscellaneous Publication United States Department of Agriculture* 1015: 1–206.
- Murray MG, Thompson WF (1980) Rapid isolation of high molecular weight plant DNA. *Nucleic Acids Research* 8: 4321–4326. <http://dx.doi.org/10.1093/nar/8.19.4321>

- Pellizzari G, Porcelli F, Convertini S, Marotta S (2012) Description of nymphal instars and adult female of *Kermes vermilio* Planchon (Hemiptera, Coccoidea, Kermesidae), with a synopsis of the European and Mediterranean species. *Zootaxa* 3336: 36–50.
- Planchon G (1864) Le Kermes du chene aux points de vue zoologique, commercial, pharmaceutique. De Boehm, Fils, Montpellier, 47 pp.
- Podsiadlo E (2005a) Morphological peculiarities in adult females of *Kermes quercus* (Linnaeus) (Hemiptera, Coccinea, Kermesidae). *Polskie Pismo Entomologiczne* 74: 43–46.
- Podsiadlo E (2005b) Morphology of the first instar *Kermes quercus* (Linnaeus) (Hemiptera, Coccinea, Kermesidae). *Polskie Pismo Entomologiczne* 74: 47–52.
- Schroer S, Pemberton RW, Cook LG, Kondo T, Gullan PJ (2008) The genetic diversity, relationships, and potential for biological control of the lobate lac scale, *Paratachardina pseudolobata* Kondo, Gullan (Hemiptera, Coccoidea, Kerriidae). *Biological Control* 46: 256–266. <http://dx.doi.org/10.1016/j.biocontrol.2008.04.009>
- Signoret V (1875) Essai sur les cochenilles ou gallinsectes (Homopteres, Coccides), 14e partie. *Annales de la Société Entomologique de France* 5: 15–40.
- Solomon JD, McCracken RL, Anderson R, Lewis Jr, Oliveria TH, Barry PJ (1980) Oak pests: A guide to major insects, diseases, air pollution and chemical injury. General Report SA-GR11, US Department of Agriculture, Washington, DC.
- Sternlicht M (1969) *Kermes bytinskii* n. spec. (Coccoidea, Kermesidae) in Israel and observations of life history. *Israel Journal of Entomology* 4: 251–270.
- Tamura K, Peterson D, Peterson N, Stecher G, Nei M, and Kumar S (2011) MEGA5: Molecular Evolutionary Genetics Analysis using Maximum Likelihood, Evolutionary Distance, and Maximum Parsimony Methods. *Molecular Biology and Evolution* 28: 2731–2739. <http://dx.doi.org/10.1093/molbev/msr121>
- Tang FT (1984) The scale insects of horticulture and forests of China. Shanxi Agricultural University Press Research Publication 2: 1–115. [in Chinese, English abstract]
- Targioni Tozzetti A (1868) Introduzione alla seconda memoria per gli studi sulle cocciniglie, e catalogo dei generi e delle specie della famiglia dei coccidi. *Atti della Societ italiana di scienze naturali* 11: 721–738.
- Turner JCL (2004) Biology and management of *Allokermes kingii* (Hemiptera, Kermesidae) on oak trees. MSc Thesis, University of Florida, Florida.
- Viggiani G (1991) Gravi infestazioni di *Nidularia pulvinata* (Planchon) (Homoptera, Kermesidae) al leccio (*Quercus ilex* L.) in alcune aree urbane centro-meridionali italiane. *Atti del Convegno: Problematrice fitopatologiche del genere Quercus in Italia*. Florence, Italy, 218–225.