

Lithobius (Monotarsobius) meifengensis, a new species of centipede from high altitude forest in central Taiwan (Chilopoda, Lithobiomorpha, Lithobiidae)

Jui-Lung Chao¹, Kwen-Shen Lee¹, Hsueh-Wen Chang²

1 Invertebrates Section, Zoology Department, National Museum of Natural Science, 1 Guancian Road, Taichung, Taiwan 404, R.O.C **2** Department of Biological Sciences, National Sun Yat-Sen University, 70 Lien-Hai Road, Kaohsiung, Taiwan 804, R.O.C.

Corresponding author: Jui-Lung Chao (chaojuilung@gmail.com)

Academic editor: G. Edgecombe | Received 16 September 2017 | Accepted 10 November 2017 | Published 7 March 2018

<http://zoobank.org/73E7AAF2-91F5-4248-B150-8E0C9412E77A>

Citation: Chao J-L, Lee K-S, Chang H-S (2018) *Lithobius (Monotarsobius) meifengensis*, a new species of centipede from high altitude forest in central Taiwan (Chilopoda, Lithobiomorpha, Lithobiidae). In: Stoev P, Edgecombe GD (Eds) Proceedings of the 17th International Congress of Myriapodology, Krabi, Thailand. ZooKeys 741: 181–192. <https://doi.org/10.3897/zookeys.741.21036>

Abstract

Lithobius (Monotarsobius) meifengensis sp. n. occurring at Mei-Feng Farm, Highland Experimental Farm of National Taiwan University, Nantou, Taiwan, is characterised by a male secondary sexual character on leg 15, a very large ventral swelling occupying almost 50% of the ventral surface of the femur; the gently curved apical region bearing approximately 20 short setae and numerous very small pores of flexo-canal epidermal glands. This male secondary sexual character is described for the first time in the genus *Lithobius*.

Keywords

Lithobius, male secondary sexual character, taxonomy

Introduction

In some male *Lithobius* species, there are secondary sexual characters on the dorsal surface of the femur or tibia of legs 14 and 15 (Lewis, 1981). In *Lithobius calcaratus* C. L. Koch, 1844, leg 15 has a dorsal wart-like projection on the inner end of the femur (Carballo et al. 1992). For four species described from East Asia: a characteristic

crest with long setae as a Chasen-bamboo whisk at the distal end of the tibia of anal legs is present in *Lithobius (Monotarsobius) tuberculatus* (Murakami, 1965); a small oval region densely covered with small pores of epidermal glands and long setae at the dorsal tibia of legs 15 in *Lithobius (Monotarsobius) sasanus* (Murakami, 1965); a dorsal wart-like projection is present on the femur of legs 15 in *Lithobius (Monotarsobius) dziadoszi* Matic, 1970, and a dorsal wart-like projection on the tibia of legs 15 in *Lithobius (Monotarsobius) riedeli* Matic, 1970. Eason (1973) described the male secondary sexual characters of six species originally assigned to *Lithobius*, mostly from Central America. a shallow excavation bearing a tuft of setae on the dorsal surface of 14th tibia, and a small wart-like outgrowth projection from the dorsal excavation on the 15th tibia in *Vulcanbius godmani* (Pocock, 1895); a dorsal shallow excavation on the 14th tibia in *Vulcanbius salvini* (Pocock, 1895); a crest rises from the dorsal excavation on 15th tibia in *Vulcanbius vulcani* (Pocock, 1895); a dorsal wart-like projection on 15th tibia in both *Guerrobium pontifex* (Pocock, 1895) and *Guerrobium humberti* (Pocock, 1895); a dorsal wart-like projection on 15th femur in *Lithobius obscurus* (Meinert, 1872).

The subgenus *Lithobius (Monotarsobius)* is among the poorly studied taxa of East Asia (Takakuwa 1941a, b; Wang 1955, 1956, 1957, 1959, 1963; Murakami 1965; Matic 1970; Pei et al. 2011; Ma et al. 2009, 2012, 2014). Three species of *Lithobius (Monotarsobius)*: *Lithobius (Monotarsobius) holstii* (Pocock, 1895), *Lithobius (Monotarsobius) obtusus* (Takakuwa, 1941), and *Lithobius (Monotarsobius) ramulosus* (Takakuwa, 1941), were recorded from Taiwan by Takakuwa (1941a, b) and Wang (1955, 1956, 1957, 1959, 1963). However, Takakuwa's specimens were destroyed in an air attack during the war in 1945, and we could not locate Wang's specimens in Taiwan. We studied specimens of centipedes collected from Taiwan, deposited at the National Museum of Natural Science (NMNS) and here describe a new lithobiid.

Materials and methods

Forty-nine specimens of both sexes of the new species treated below were collected from Mei-Feng Farm, Highland Experimental Farm of National Taiwan University, Nantou, Taiwan. The material was studied using stereo-microscope and SEM. Type specimens are preserved in 75% alcohol and deposited in the department of Zoology, National Museum of Natural Science, Taichung, Taiwan. Terminology for external anatomy follows Bonato et al. (2010). The following abbreviations are used in the text and tables:

T, TT	tergite, tergites;	a	anterior,
F	femur,	t	trochanter,
S, SS	sternite, sternites;	m	median,
Ti	tibia;	P	prefemur,
C	coxa,	p	posterior.

Taxonomy

Lithobius (Monotarsobius) meifengensis sp. n.

<http://zoobank.org/C7382703-E3CE-445D-8166-6A3C34416C04>

Figures 1–7

Type material. Holotype ♂ (NMNS7634-073): Taiwan, Nantou County, Mei-Feng Farm, apple orchard, 24°05'N, 121°10'E, 2080 m, 19 Feb 2002, leg. Sheng-Hai Wu.

Paratypes: 1♂ (NMNS7634-072), grassland; 1♂ (NMNS7634-074), plum orchard; 1♂ (NMNS7634-075); 1♀ (NMNS7634-068), pear orchard; 2♀ (NMNS7634-071), waste land; 1♂1♀ (NMNS7634-070), grassland; same data as holotype.

Other material. 1♀ (NMNS7634-096), pear orchard; 3♀ (NMNS7634-098), plum orchard; 1♂1♀ (NMNS7634-099), plum orchard; 1♂ (NMNS7634-100), pear orchard; 1♂4♀ (NMNS7843-006), grassland; 2♂1♀ (NMNS7843-007), grassland; 1♂2♀ (NMNS7843-003), grassland; 2♂5♀ (NMNS7843-004), plum orchard; 2♀ (NMNS7843-005), pear orchard; 2♀ (NMNS7843-002), grassland; 1♂ (NMNS7843-001), pear orchard; 2♂5♀ (NMNS7843-009), grassland; 2♂1♀ (NMNS7843-008), pear orchard; same locality as holotype, 15 Apr 2002, leg. Sheng-Hai Wu.

Etymology. Refers to the type locality.

Diagnosis. A species of the genus *Lithobius* Leach, 1814, subgenus *Monotarsobius* Verhoeff, 1905, normally with 19+19 elongate antennal articles, body length approximately 9 mm; cephalic plate 0.8–0.9 times as long as wide; six ocelli [one posterior and three dorsal, two ventral] on each side, posterior ocellus comparatively large; Tömösváry's organ moderately small, slightly larger than adjacent ocelli; 2+2 coxosternal teeth; porodonts moderately slender, posterolateral to the outer tooth; posterior angles of all tergites lacking triangular projections; tarsi fused on legs 1–13; male secondary sexual characters on legs 15, a large ventral domed swelling on femur (Figure 1), and a dorsal shallow excavation on tarsus 2; coxal pores round, 3333 in males, 3443 or 3444 in females; female gonopods with 2+2 sharp coniform spurs, claw undivided.

Description. Body length: 7.0–9.8 mm. Body colour (in alcohol): yellowish with dark patches.

Antennae with 19 articles (Figure 2A); basal three articles typically wider than long, following articles markedly longer than wide; distal article much longer than wide, up to 2.8 times as long as wide; abundant setae on antennal surface, less so on basal articles, gradual increase in density to around fourth article, then more or less constant in number.

Cephalic plate smooth, convex, 0.8–0.9 times as long as wide; posterior marginal ridge moderately broader and weakly concave (Figure 2B); small pores of flexo-canal epidermal glands (gp), large pores of recto-canal epidermal glands (gp*) and setae scattered sparsely over the whole surface (Figure 2C) (Müller, 2009).

Six *ocelli* on each side, one posterior and three dorsal, two ventral, arranged in two irregular row (Figure 3A); the posterior ocellus comparatively large; ocelli domed, translucent, usually darkly pigmented.

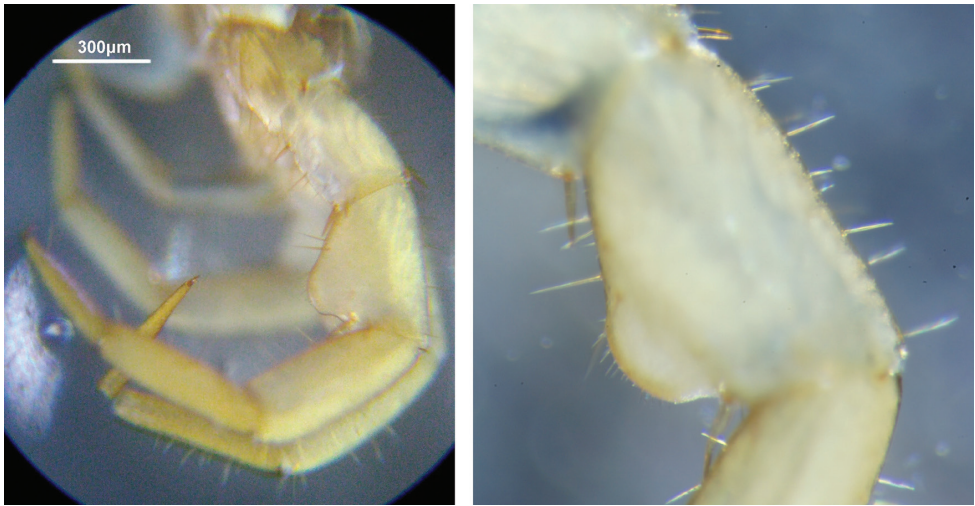


Figure 1. *Lithobius (Monotarsobius) meifengensis* sp. n., **A** ♂ (NMNS7843-004), lateral view of male 15th legs **B** ♂ (NMNS7634-074), lateral view of male 15th femur.

Tömösváry's organ comparatively small, nearly rounded; situated at anterolateral margin of cephalic plate, slightly bigger than the adjoining ocelli (Figure 3B).

Forcipular coxosternite sub-trapezoidal, anterior margin narrow, external side lightly longer than internal side; median longitudinal cleft moderately deep (Figure 4A); anterior border with 2+2 large triangular coxosternal teeth, inner tooth slightly larger than outer one; porodonts moderately slender, setiform, posterolateral to the outer tooth (Figure 4B); some scattered setae on the ventral side of coxosternite.

Tergites smooth, without wrinkles, backside slightly hunched; T1 generally trapeziform, posterior margin narrower than anterior margin, narrower than T3 and the cephalic plate; T3 slightly narrower than the cephalic plate; posterior margin of TT1, 3, 5, 8, 10 and 12 weakly concave; TT1, 3 and 5 with continuous lateral and posterior marginal ridges, other tergites with discontinuous posterior marginal ridges; posterior angles of all tergites lacking triangular projections (Figure 2A); tiny setae scattered very sparsely over the surface.

Sternites narrower posteriorly, generally trapeziform, comparatively smooth, setae emerging from pores scattered very sparsely over the surface.

Legs: tarsi fused on legs 1–13 (Figure 5A), well-defined on legs 14–15; all legs with fairly long claws, curved ventrally; anterior and posterior accessory spines on legs 1–14, the anterior one moderately slender, the posterior spine short and thick (Figure 5B); legs 15 lack anterior accessory spines; legs 14–15 with numerous large pores (9.1–11.1 µm) of the telopodal glands on the inner surfaces of femur, tibia, tarsus 1 and tarsus 2 (Figure 5C), the pores each opening into the centre of a bell-shaped cavity (3.5–3.9 µm) (Figure 5C), some small pores (1.4–1.6 µm) of flexo-canal epidermal glands sparsely distributed along the border of the epidermal cells (Figure 5D). Male 15th legs with secondary sexual character; female legs 15 and other legs without secondary sexual characters on femur or tibia (Figure 7A). Leg plectrotaxy as in Table 1.

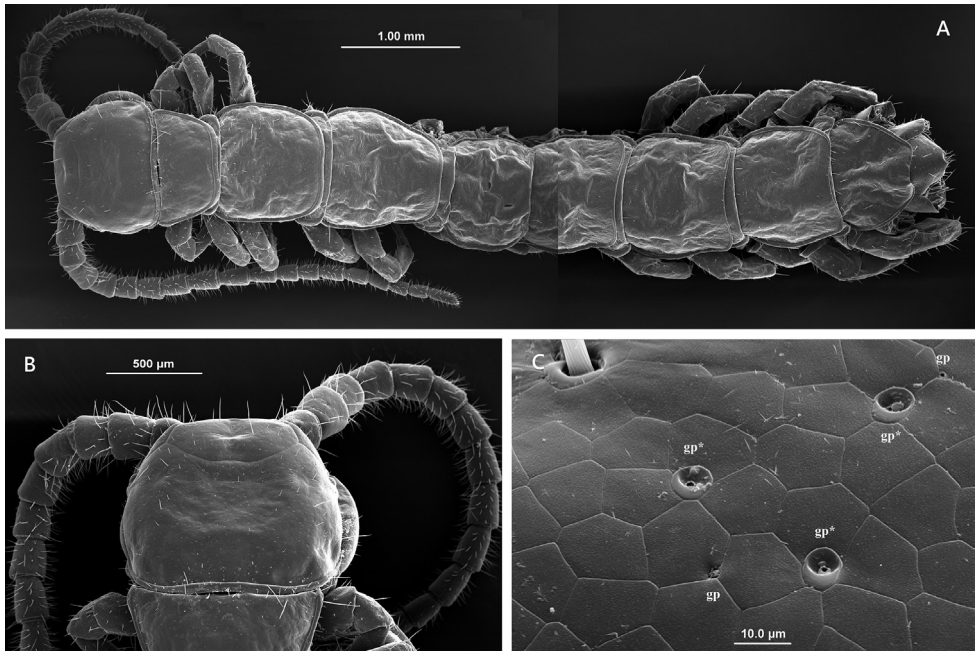


Figure 2. *Lithobius (Monotarsobius) meifengensis* sp. n. ♂ (NMNS7843-007), **A** habitus, dorsal view **B** cephalic plate **C** small pores of flexo-canal epidermal glands (gp) and large pores of recto-canal epidermal glands (gp*) on the cephalic plate.

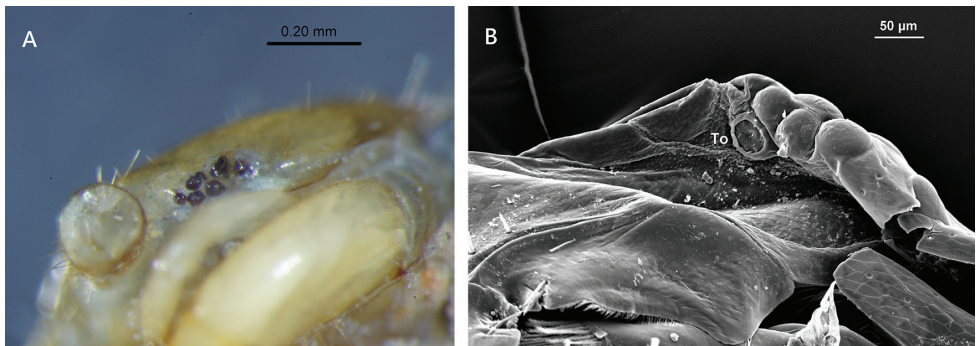


Figure 3. *Lithobius (Monotarsobius) meifengensis* sp. n. **A** ♂ (NMNS7843-004), six ocelli on right side **B** ♂ (NMNS7843-008), Tömösváry's organ (To).

Male secondary sexual character on leg 15: a large domed swelling on the ventral surface of femur, covering almost 50% (Figure 1, 6A); the surface of femoral swelling lacks the large pores of the telopodal glands (Figure 6B); the gently curved apical region bears approximately 20 short setae, and numerous very small pores (0.8–1.0 µm) of flexo-canal epidermal glands densely distributed (Figure 6C); a dorsal shallow excavation on the tarsus 2 (Figure 5C).

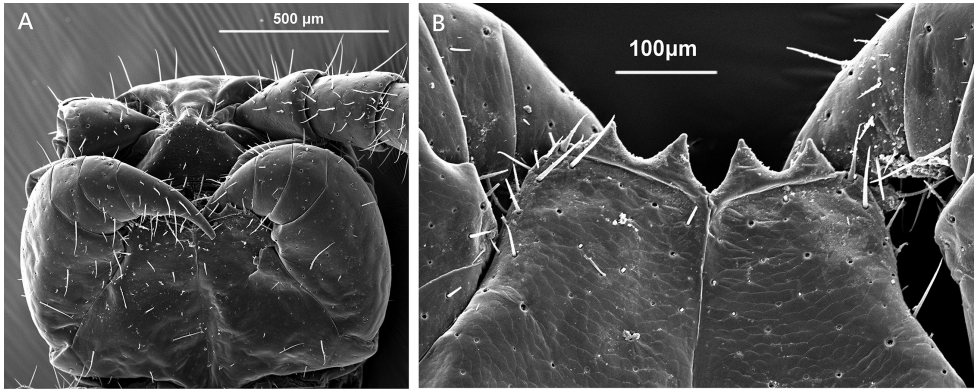


Figure 4. *Lithobius (Monotarsobius) meifengensis* sp. n., **A** ♂ (NMNS7634-070), ventral view of the head **B** ♂ (NMNS7843-008), coxosternal teeth and prodonts.

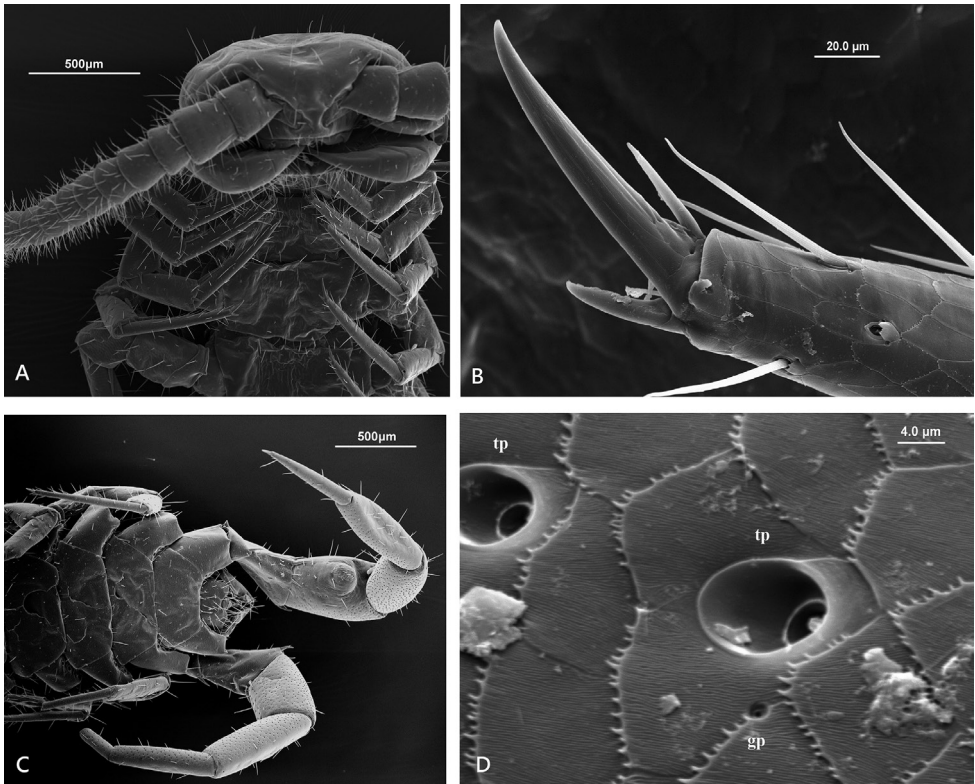


Figure 5. *Lithobius (Monotarsobius) meifengensis* sp. n. **A, B**, ♀NMNS7843-009: **A** the 1st to 4th leg-bearing segments, ventral view **B** the claw of 4th leg **C, D** ♂ NMNS7634-070): **C** left 15th leg and right 14th leg, lateral-ventral view **D** large pores of the telopodal glands (tp) and small pore of flexo-canal epidermal gland (gp) on the 15th leg.

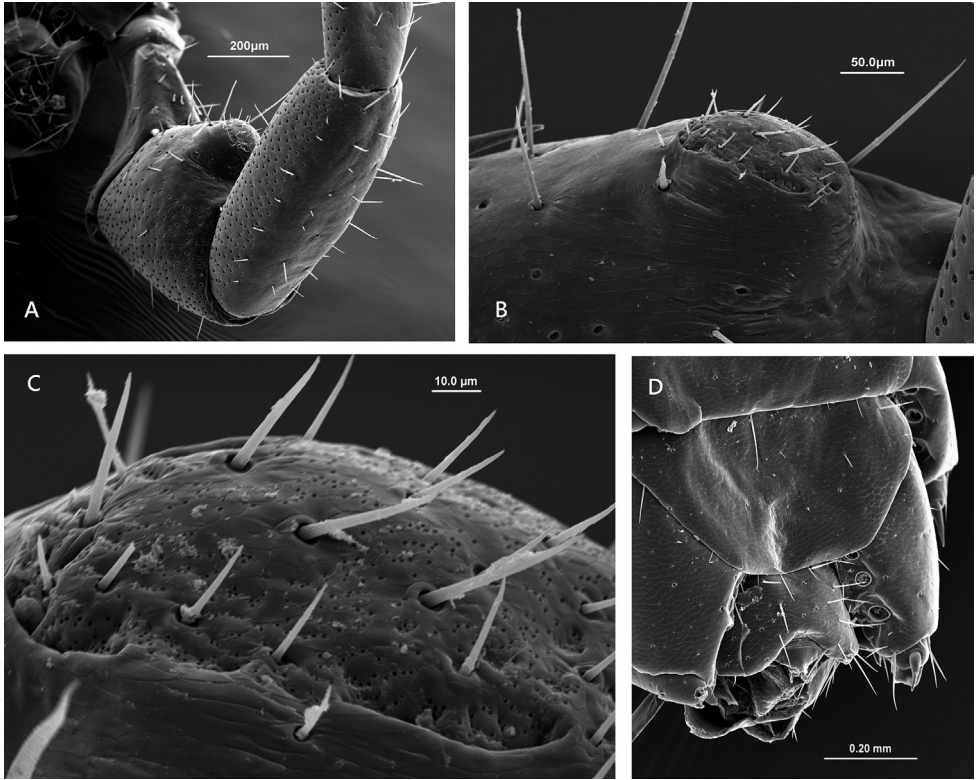


Figure 6. *Lithobius (Monotarsobius) meifengensis* sp. n. **A–C** ♂ NMNS7634-070): **A** the femur and tibia of male 15th leg, ventral view **B** a large domed swelling on the ventral surface of male 15th femur **C** apical region of the swelling on the male 15th femur **D** ♂ NMNS7843-008, male genital sternite and 15th sternite.

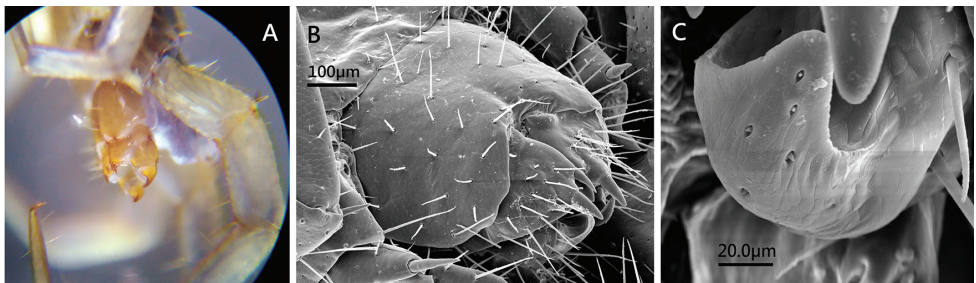


Figure 7. *Lithobius (Monotarsobius) meifengensis* sp. n. **A** (♀ NMNS7843-005): 15th leg and female gonopod; **B, C** (♀ NMNS7843-009): **B** female genital sternite **C** terminal claw of female gonopod.

Table 1. Leg plectrotaxy of *Lithobius (Monotarsobius) meifengensis* sp. n.

leg	Ventral					Dorsal				
	C	t	P	F	Ti	C	t	P	F	Ti
1	–	–	–	am	m	–	–	p	ap	a
2	–	–	–	am	m	–	–	p	ap	a
3	–	–	–	am	m	–	–	p	ap	a
4	–	–	–	am	m	–	–	p	ap	a
5	–	–	–	am	m	–	–	p	ap	a
6	–	–	–	am	m	–	–	p	ap	ap
7	–	–	–	am	m	–	–	p	ap	ap
8	–	–	m	am	m	–	–	ap	ap	ap
9	–	–	m	am	m	–	–	ap	ap	ap
10	–	–	m	am	am	–	–	ap	ap	ap
11	–	–	mp	amp	am	–	–	ap	ap	ap
12	–	m	mp	amp	am	–	–	amp	ap	ap
13	–	m	mp	amp	am	–	–	amp	p	ap
14	–	m	mp	am	–	–	–	amp	–	–
15	–	m	amp	am	–	–	–	amp	–	–

Coxal pores: 3333 in males, 3443 or 3444 in females, round, coxal pore field set in a relatively shallow groove, margin of coxal pore-field with slightly eminence.

Male sternite 15: trapeziform, posterolaterally narrower than anterolaterally, posterior margin straight, long setae scattered sparsely over the surface.

Male first genital sternite: wider than long, usually well chitinised; posterior margin quite deeply concave between the gonopods, without a medial bulge (Figure 6D); comparatively long setae evenly scattered on the ventral surface; gonopods short and small, with 2–3 long setae, apically slightly chitinized.

Female sternite 15: generally trapeziform, anterolaterally broader than posterolaterally, posterior margin straight, long setae scattered sparsely over the surface; the sternite of genital segment well chitinised, wider than long; posterior margin of genital sternite deeply concave (Figure 7B); short to long setae sparsely scattered over the ventral surface of the genital segment.

Female gonopod: first article fairly broad, bearing 11–13 long setae, arranged in three irregular rows; 2+2 sharp coniform spurs, inner spur smaller (Figure 7A, B); second article with 7–9 rather long setae arranged in two irregular rows on its ventral side; third article usually with 2–3 long setae on its ventral surface; terminal claw undivided, bearing a few thick sensilla coeloconica on its dorsodistal and ventral surface (Figure 7C).

Remarks

Some *Lithobius* species, all from Russia, also have distinct sexual characters on male leg 15: the proximal part of male 15th tibia of *Lithobius (Monotarsobius) kurcheavae*

described by Zaleskaja (1978) has a large swelling bearing a tuft of long bristles, and a longitudinal deep excavation on the dorsal surface; the dorsal surface of the male 15th tibia of *Lithobius (Monotarsobius) evsyukovi* (Zuev 2017) a large, flat, ovoid wart supporting a few short setae at apex; the dorsal surface of 15th tibia *Lithobius (Monotarsobius) ferganensis* (Trotzina, 1894) a small cylindrical wart supporting a few short setae at apex; while the male 15th tibia of *Lithobius (Chinobius) yuchernovi* (Farzaliyeva et al. 2017) is characterized by a tubercle supporting a cluster of curved and long setae on the ventral surface. *Lithobius (Monotarsobius) meifengensis* sp. n. differs from those by its unique male secondary sexual character on the ventral surface of 15th femur, a large swelling with approximately 20 short setae and numerous very small pores, not found in any of those congeners.

Records of the species of *Lithobius (Monotarsobius)* from Taiwan by Takakuwa and Wang are listed as follows: locality: old name = new name; place name ??: unknown.

Lithobius (Monotarsobius) ramulosus (Takakuwa, 1941)

- [1] *Monotarsobius ramulosus* Takakuwa, 1941a – Trans. Nat. Hist. Soc. Formosa 31 (213): 294-295; fig. 5, 6 (original description, key) (locality: Keisyu = Xizhou)
Monotarsobius ramulosus: Takakuwa, 1941b – Fauna Nippon. 9(8-3): 74; fig. 84; (description, key) (locality: Keisyu = Xizhou)
Monotarsobius ramulosus: Takakuwa, 1942 – Trans. Nat. Hist. Soc. Formosa 32(231): 360 (locality: Keisyu = Xizhou)
Monotarsobius ramulosus: Wang 1955 – Quar. J. Taiwan Mus. 8(1): 16 (locality: Taipei)
Monotarsobius ramulosus: Wang 1956 – Quar. J. Taiwan Mus. 9(2): 159 (locality: Hualien)

Lithobius (Monotarsobius) obtusus (Takakuwa, 1941)

- [1] *Monotarsobius obtusus* Takakuwa, 1941a – Trans. Nat. Hist. Soc. Formosa 31 (213): 293-294; fig. 2 (original description, key) (locality: Keisyu = Xizhou, Shaka = Shalu, Tikunan = Zhunan)
Monotarsobius obtusus: Takakuwa 1941b – Fauna Nippon. 9(8-3): 75; fig. 85; (description, key) (locality: Keisyu = Xizhou, Shaka = Shalu)
Monotarsobius obtusus: Wang 1955 – Quar. J. Taiwan Mus. 8(1): 16 (locality: Shin-Tien = Hsintien)
Monotarsobius obtusus: Wang 1956 – Quar. J. Taiwan Mus. 9(2): 159 (locality: Hualien)
Monotarsobius obtusus: Wang 1957 – Quar. J. Taiwan Mus. 10(1): 28 (locality: Kao Yung ??)
Monotarsobius obtusus: Wang 1959 – Quar. J. Taiwan Mus. 12(3, 4): 198 (locality: Taipei, Kao Yung ??)
Monotarsobius obtusus: Wang 1963 – Quar. J. Taiwan Mus. 16(1, 2): 95 (locality: Rai Wu ??)

Acknowledgements

We are grateful to Dr. J. G. E. Lewis and Dr. Gregory D. Edgecombe for valued help during our study. Thanks to Dr. Sheng-Hai Wu for his specimens. Thanks to Mr. Shih-Chen Chang, who translated the Japanese literature for us. We are indebted to Prof. Hsi-Te Shih, Prof. Huiqin Ma, and Prof. Pavel Stoev for providing us with valuable literature.

References

- Bonato L, Edgecombe GD, Lewis JGE, Minelli A, Pereira LA, Shelley RM, Zapparoli M (2010) A common terminology for the external anatomy of centipedes (Chilopoda). *ZooKeys* 69: 17–51. <https://doi.org/10.3897/zookeys.69.737>
- Carballo JL, Escot C, Estacio FJ, Carmona MP (1992) Sobre la presencia de *Lithobius calcarius* C. Koch, 1844 y *Lithobius pilicornis* Newport, 1844 en el sur de la Península Ibérica. *Aquivos do Museu Bocage* 2(9): 149–153.
- Chamberlin RV, Wang YHM (1952) Some records and descriptions of chilopods from Japan and other oriental areas. *Proceedings of the Biological Society of Washington* 65: 177–187.
- Eason EH (1973) The type specimens and identity of the species described in the genus *Lithobius* by R. I. Pocock from 1890 to 1901. *Bulletin of the British Museum (Natural History) Zoology* 25(2): 39–83.
- Ernst A, Rosenberg J (2003) Structure and distribution of sensilla coeloconica on the maxillipedes of Chilopoda. *African Invertebrates* 44(1): 155–168.
- Farzalieva SG, Nefediev PS, Tuf IH (2017) *Lithobius (Chinobius) yuchernovi*, a new lithobiid species from northeastern Siberia and the Kamchatka Peninsula, Russia (Chilopoda, Lithobiomorpha). *ZooKeys* 693: 95–108. <https://doi.org/10.3897/zookeys.693.14769>
- Lewis JGE (1981) *The Biology of Centipedes*. Cambridge University Press, Cambridge, 272–275. <https://doi.org/10.1017/CBO9780511565649>
- Ma H, Pei S, Hou X, Zhu T (2014) *Lithobius (Monotarsobius) zhangii* sp. n., a new species from Eastern China (Chilopoda, Lithobiomorpha, Lithobiidae). *ZooKeys* 459: 1–10. <https://doi.org/10.3897/zookeys.459.8169>
- Ma H, Pei S, Wu DGai Y (2012) *Lithobius (Monotarsobius) monoforamini* sp. n., a new species of lithobiid centipede from central China (Chilopoda, Lithobiomorpha, Lithobiidae). *ZooKeys* 193: 79–87. <https://doi.org/10.3897/zookeys.193.2802>
- Ma H, Pei S, Zhu M, Zhang G, Liu L (2009) A new species of *Lithobius (Monotarsobius) Verhoeff, 1905* (Lithobiomorpha: Lithobiidae) from China. *Entomological News* 120(3): 313–318. <https://doi.org/10.3157/021.120.0310>
- Matic Z (1970) Contribution à la connaissance des Lithobiides (Chilopoda, Lithobiomorpha) de Corée. *Annales Zoologici Warszawa* 28: 55–63.
- Müller CHG, Rosenberg J, Hilken G (2009) Fine structure and phylogenetic significance of ‘flexo-canal epidermal glands’ in Chilopoda. *Soil Organisms* 81(3): 269–294.
- Murakami Y (1965) Postembryonic development of the common Myriapoda of Japan XIX. Two species of *Monotarsobius* (Chilopoda: Lithobiidae). *Zoological Magazine* 74: 69–75.

- Pei S, Ma H, Shi B, Wu D, Zhou W (2011) A new species of *Lithobius* (*Monotarsobius*) Verhoeff, 1905 (Lithobiomorpha, Lithobiidae) from China. *ZooKeys* 82: 59–66. <https://doi.org/10.3897/zookeys.82.823>
- Takakuwa Y (1941a) Über Einige Japanische Lithobiiden. *Transaction of Natural History Society Formosa* 31(213): 292–297.
- Takakuwa Y (1941b) Class Chilopoda, Epimorpha, Lithobiomorpha. *Fauna Nipponica* Vol. 9 Fas. 8 No. (3). Sansendo Book Store, Tokyo, 73–79. [In Japanese]
- Takakuwa Y (1942) Die Myriopoden aus Formosa, Philippinen U. S. W. *Transaction of Natural History Society Formosa* 32 (231): 359–367.
- Wang YHM (1955) Serica 1a: Records of myriapods on Formosa with description of new species. *Quarterly Journal of the Taiwan Museum* 8: 13–16.
- Wang YHM (1956) Serica 1e: Records of myriapods on Formosa with description of new species (2). *Quarterly Journal of the Taiwan Museum* 9: 155–159.
- Wang YHM (1957) Serica 1f: Records of myriapods on Taiwan Islands (3) – Pescadore Islets, Kao-Yung, Pingtung, Changhua and Taipei. *Quarterly Journal of the Taiwan Museum* 10: 23–29.
- Wang YHM (1959) Serica 1j: On Chilopoda from Taiwan with a new Lithobid. *Quarterly Journal of the Taiwan Museum* 12: 195–199.
- Wang YHM (1963) Serica 1q: Millipedes and Chilopoda of Quemoy, Fukien Province and Taiwan Island, Botel Tobago (Lan Yu), Taiwan province and of Singapore. *Quarterly Journal of the Taiwan Museum* 16: 89–96.
- Zalesskaja NT (1978) Identification book of the lithobiomorph centipedes of the USSR (Chilopoda: Lithobiomorpha). Nauka Publ. House, Moscow, 154–157. [In Russian]
- Zuev RV (2017) Two new species of lithobiid centipedes (Chilopoda: Lithobiomorpha) from the northern Caucasus, Russia. *Arthropoda Selecta* 26(1): 15–24.