

# Evidence of cryptic species in the blenniid *Cirripectes alboapicalis* species complex, with zoogeographic implications for the South Pacific

Erwan Delrieu-Trottin<sup>1</sup>, Libby Liggins<sup>2,3</sup>, Thomas Trnski<sup>3</sup>, Jeffrey T. Williams<sup>4</sup>,  
Valentina Neglia<sup>1</sup>, Cristian Rapu-Edmunds<sup>5</sup>, Serge Planes<sup>6,7</sup>, Pablo Saenz-Agudelo<sup>1</sup>

**1** Instituto de Ciencias Ambientales y Evolutivas, Universidad Austral de Chile, Valdivia, Chile **2** Institute of Natural and Mathematical Sciences, Massey University, Auckland, New Zealand **3** Auckland War Memorial Museum, Tāmaki Paenga Hira, Auckland, New Zealand **4** Division of Fishes, Department of Vertebrate Zoology, National Museum of Natural History, Smithsonian Institution, Suitland, MD USA **5** Mike Rapu Diving Center, Caleta Hanga Roa O’rai, Isla de Pascua, Chile **6** PSL Research University: EPHE-UPVD-CNRS, USR 3278 CRIOBE, Université de Perpignan, Perpignan Cedex, France **7** Laboratoire d’Excellence “CORAIL”, Papetoai, Moorea, French Polynesia

Corresponding author: Erwan Delrieu-Trottin ([erwan.delrieu.trottin@gmail.com](mailto:erwan.delrieu.trottin@gmail.com))

Academic editor: D. Morgan | Received 5 August 2018 | Accepted 9 October 2018 | Published 20 December 2018

<http://zoobank.org/E4E66F6A-17C2-4A91-B528-BD940A50045B>

**Citation:** Delrieu-Trottin E, Liggins L, Trnski T, Williams JT, Neglia V, Rapu-Edmunds C, Planes S, Saenz-Agudelo P (2018) Evidence of cryptic species in the blenniid *Cirripectes alboapicalis* species complex, with zoogeographic implications for the South Pacific. ZooKeys 810: 127–138. <https://doi.org/10.3897/zookeys.810.28887>

## Abstract

Rapa Nui, commonly known as Easter Island (Chile), is one of the most isolated tropical islands of the Pacific Ocean. The island location of Rapa Nui makes it the easternmost point of the geographic ranges for many western Pacific fish species that are restricted to the subtropical islands south of 20°S latitude. The blenniid fish species *Cirripectes alboapicalis* has been thought to have one of the most extensive geographic distribution ranges among these southern subtropical fish species, extending from the southern Great Barrier Reef to Rapa Nui. A phylogenetic analysis was conducted to determine the taxonomic status of the species. The results provide genetic evidence that suggests that this formerly South Pacific-wide species comprises at least three cryptic species with allopatric geographic distributions. The analyses reveal the geographic distributions of these clades and their genetic relationships with each other, and with other species within the genus *Cirripectes*. The processes that culminated in the current geographic distribution of this species complex and the zoogeographic implications of this finding for the South Pacific region are discussed.

## Keywords

Austral Islands, Blenniidae, cryptic species, cytochrome oxidase I, Easter Island, endemism, French Polynesia, Gambier Islands, Kermadec Islands, mtDNA, Phylogeny, Rangitāhua, Rapa Nui

## Introduction

The Indo-Malay-Philippines Archipelago is the hotspot of species richness for reef fishes in the Indo-Pacific region (Carpenter and Springer 2005), a richness that tends to decline with distance from this hotspot (Bellwood and Wainwright 2002; Connolly et al. 2003; Allen 2008; Briggs 2009). Accordingly, the high latitude and remote island of Rapa Nui (Easter Island, Chile), located on the eastern border of the South Pacific region, hosts one of the lowest levels of species richness reported for coral reef fishes, with only 139 shore fish species (Randall 1976; Randall and Cea 2011; Friedlander et al. 2013). The isolation of Rapa Nui has also resulted in a high proportion of endemic species (almost 22 %) (Randall and Cea 2011). The location of Rapa Nui (south of 20°S latitude) makes it the easternmost point of the geographic ranges for many subtropical Pacific fish species. These species are often either narrow-range endemics restricted to only a couple of subtropical islands of the south Pacific (e.g., *Itycirrhitus wilhelmi* found only around Rapa Nui and Pitcairn Islands), or they may be widespread and occur at most of the subtropical islands south of 20°S latitude from the southern Great Barrier Reef to Rapa Nui (e.g., *Anampses femininus*). However, understanding the contribution of other South Pacific locations, and Rapa Nui's own isolation, to its fish species richness and endemism is not easily answered through examination of species ranges alone. Phylogenetic analysis can provide complementary information regarding the evolutionary history of species that, together with their geographic distribution, can shed light on the origin and distribution of regional species richness.

The blenniid fish species *Cirripectes alboapicalis* (Ogilby 1899) has apparently one of the most extensive geographic distributional ranges among the southern subtropical fish species, extending from the southern Great Barrier Reef (type locality at Lord Howe Island) eastwards to Rapa Nui (Williams 1988). The taxonomic history of the Rapa Nui population of this species has not been straightforward; the first specimens collected were described as a subspecies (*Cirripectes variolosus patuki* (De Buen 1963)) and later elevated to the species level by Springer (1970). Williams (1988), co-author of the present study, placed the Rapa Nui endemic *C. patuki* in the synonymy of *C. alboapicalis* in his revision of the genus *Cirripectes*. The development of analytical techniques in molecular biology provides a new tool to explore taxonomic diversification and the geographic distributions of lineages at the population level and among closely-related species (Avice 2000). Given the unusually broad distribution of this subtropical species of blenny, the high level of reef fish endemism at Rapa Nui, and the taxonomic history of this species, phylogenetic analyses were conducted to evaluate the taxonomy of *C. alboapicalis* and understand the processes that shaped its geographic distribution.

## Material and methods

**Specimen collection.** Recent expeditions enabled collection of *Cirripectes* cf. *alboapicalis* specimens from Rangitāhua-Kermadec Islands (LL and TT in 2015), Gambier Islands (EDT, JTW, SP in 2010), Austral Islands (EDT, JTW, SP in 2013), and Rapa Nui (EDT, VN, ECG, CRE, PSA in 2016 and 2018), while additional expeditions to the Marquesas Islands (EDT, JTW, SP) and Manuae-Scilly (JTW, SP in 2014) allowed us to collect comparative tissue samples, resulting in a total of 43 specimens of *Cirripectes* spp. for this analysis (Table 1). A variety of collecting techniques were used (Hawai'ian slings, rotenone, clove oil and hand nets). Tissues were preserved in 96% EtOH at ambient temperature.

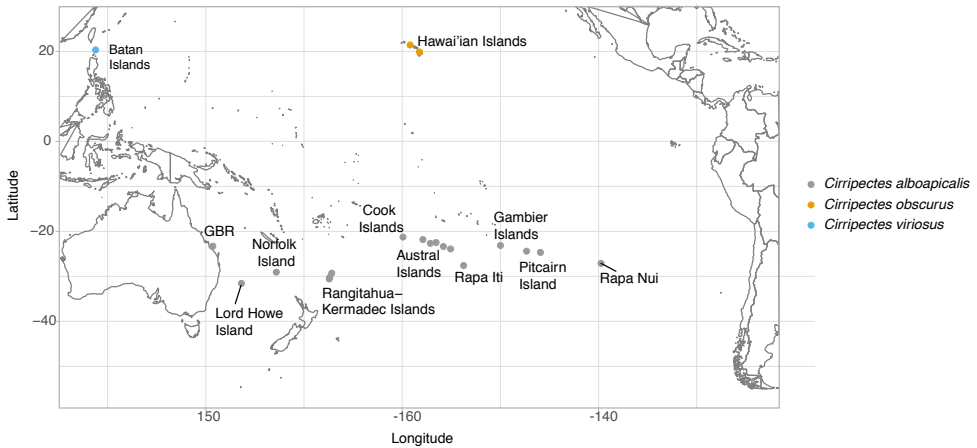
**Molecular analyses.** To conduct our genetic analysis, whole genomic DNA was extracted from fin clips preserved in 96% EtOH. DNA extraction was performed using GeneJet Genomic DNA purification kit (Thermo Fisher Scientific) or the DNeasy Blood & Tissue Kit (Qiagen), according to manufacturer's protocols. A fragment of the mitochondrial gene coding for cytochrome C oxidase subunit I (COI) was amplified with the primers designed by Ward et al. (2005). PCR amplifications and sequencing were performed following the protocol of Williams et al. (2012). A 650 base-pair fragment was sequenced from each of the 43 specimens of *Cirripectes* spp. and compared with COI sequences of congeners obtained from GenBank and BOLD, with a representative of the Labrisomidae used as the outgroup (Table 1). The closest relatives of *C. alboapicalis* based on morphology are two species with very restricted distributions: *Cirripectes obscurus* (Borodin 1927), a Hawai'ian endemic species; and *Cirripectes viriosus* (Williams 1988), endemic to the Batan Islands of Philippines (northernmost islands of the Philippines) (Figure 1). We included *C. obscurus* in our study, as we collected a single specimen that was morphologically consistent with this species in the Australs; unfortunately no tissues were available from *C. viriosus* for this study. All sequences are deposited in GenBank (Table 1) and metadata uploaded to the Genomics Observatory Metadatabase (GeOMe) (Deck et al. 2017).

Two tree-building methods were used to construct branching diagrams. First a Neighbor-joining (NJ) analysis based on the Kimura 2-parameter (K2P) model of sequence evolution (Kimura 1980) was conducted using the software package MEGA 6 (Tamura et al. 2013). Confidence in topology was evaluated by a bootstrap analysis with 1000 replicates (Felsenstein 1985). Second, a Maximum Likelihood (ML) analysis was performed using IQ-TREE (Minh et al. 2013, Nguyen et al. 2015) using the IQTREE Web Server (<http://iqtree.cibiv.univie.ac.at>). The best model of evolution for each partition was informed with ModelFinder (Kalyaanamoorthy et al. 2017) implemented in IQ-TREE prior to the construction of the ML tree. To assess branch support, the IQ-TREE analysis used the ultrafast bootstrap approximation (UFboot) with 1000 replicates (Minh et al. 2013) and the SH-like approximate likelihood ratio test (SH-aLRT) also with 1000 bootstrap replicates (Guindon et al. 2010). To visualize the relationships between haplotypes of *Cirripectes alboapicalis* and *C. obscurus* among the different sampling localities, a haplotype network was constructed using the haplonet

**Table 1.** Specimens collected for this study.

Species	Geographic locality	Voucher number	GenBank number	
<i>Cirripectes "patuki"</i>	Rapa Nui	RN1	MH932003	
	Rapa Nui	RN2	MH932004	
	Rapa Nui	RN3	MH932005	
	Rapa Nui	RN4	MH932006	
	Rapa Nui	RN5	MH932007	
<i>Cirripectes</i> sp. n.	Austral Islands	AUST-400	MH707846	
	Austral Islands	AUST-549	MH707848	
	Gambier Islands	GAM-511	MH707849	
	Gambier Islands	GAM-508	MH707847	
	Austral Islands	AUST-550	MH707850	
	Austral Islands	AUST-546	MH707855	
<i>Cirripectes "alboapicalis"</i>	Kermadec Islands	Kermadecs447	MH932008	
	Kermadec Islands	Kermadecs448	MH932009	
<i>Cirripectes fuscoguttatus</i>	Austral Islands	AUST-157	MH707851	
	Austral Islands	AUST-397	MH707852	
	Austral Islands	AUST-156	MH707853	
<i>Cirripectes jenningsi</i>	Austral Islands	AUST-547	MH707854	
<i>Cirripectes quagga</i>	Austral Islands	AUST-165	MH707856	
	Scilly Island	SCIL-193	MH707857	
	Austral Islands	AUST-403	MH707859	
	Austral Islands	AUST-536	MH707861	
	Gambier Islands	GAM-099	MH707863	
	Gambier Islands	GAM-110	MH707858	
	Gambier Islands	GAM-109	MH707864	
	Austral Islands	AUST-402	MH707865	
	Austral Islands	AUST-537	MH707860	
	Austral Islands	AUST-168	MH707862	
	<i>Cirripectes variolosus</i>	Austral Islands	AUST-052	MH707867
		Gambier Islands	GAM-144	MH707873
		Austral Islands	AUST-164	MH707881
		Gambier Islands	GAM-143	MH707869
		Gambier Islands	GAM-145	MH707879
Gambier Islands		GAM-794	MH707876	
Gambier Islands		GAM-737	MH707874	
Gambier Islands		GAM-793	MH707877	
Austral Islands		AUST-162	MH707870	
Austral Islands		AUST-163	MH707880	
Scilly Island		SCIL-194	MH707875	
Scilly Island		SCIL-252	MH707866	
Austral Islands		AUST-056	MH707868	
Marquesas Islands		MARQ-071	MH707872	
Marquesas Islands		MARQ-074	MH707871	
Marquesas Islands	MARQ-073	MH707878		

function of the package “pegas” (Paradis 2010) in the R statistical environment (R Core Team 2017). Finally, estimates of Net Evolutionary Divergence (NET) between the different groups of sequences observed were computed using the software package MEGA 6 (Tamura et al. 2013) and were conducted using the K2P model (Kimura 1980).

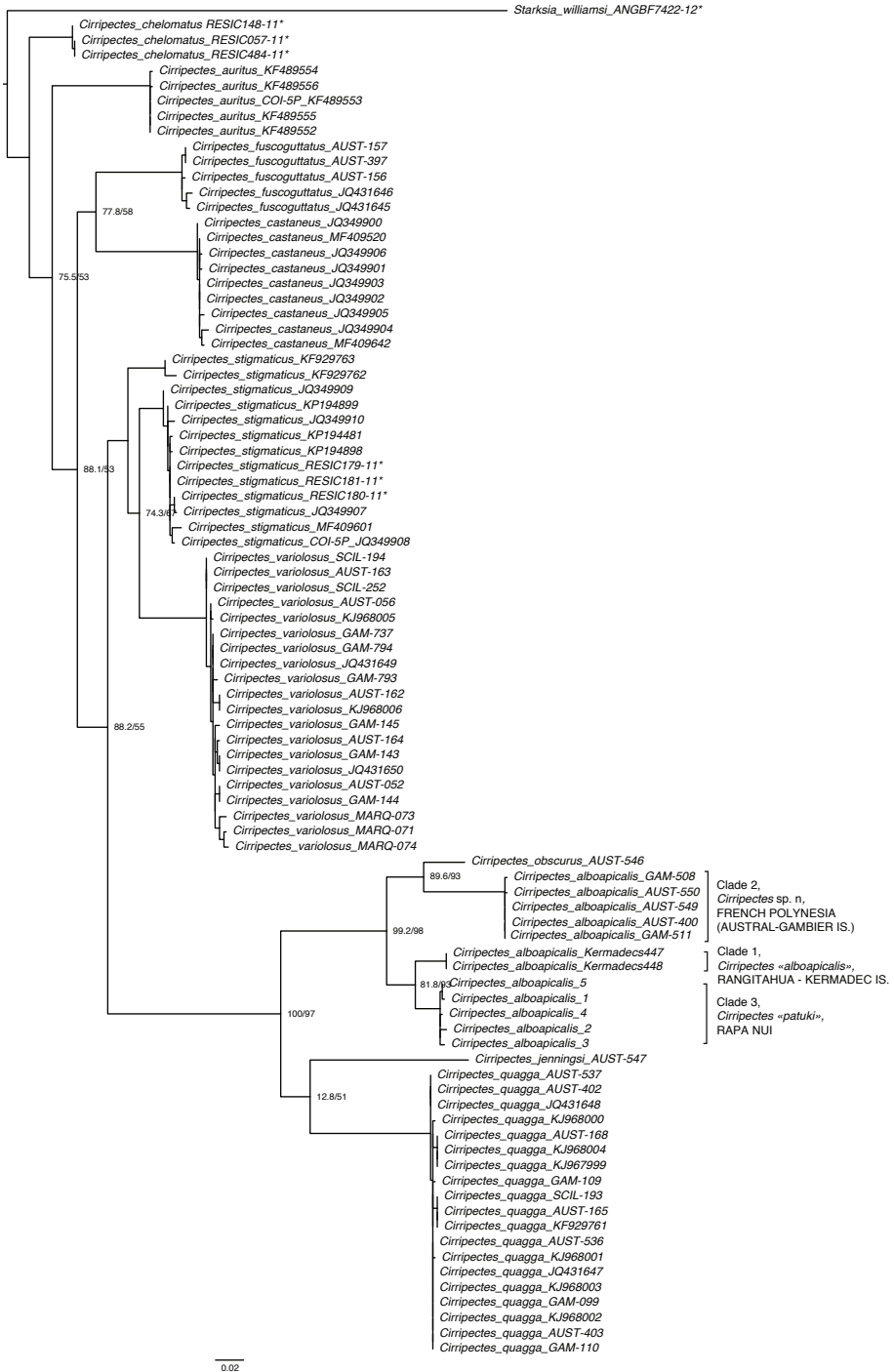


**Figure 1.** Geographic distribution of *Cirripectes alboapicalis*, *Cirripectes obscurus*, and *Cirripectes viriosus*

## Results and discussion

Molecular data were examined for 11 of the 23 valid species of the genus *Cirripectes* and included *C. obscurus*, one of the two hypothesized closest relatives of *C. alboapicalis* (based on color and morphological characters). Both the NJ and the ML analyses resulted in identical tree topologies and reveal three well-supported and highly divergent clades among the *C. alboapicalis* specimens. Clade 1 is composed of specimens from Rangitāhua-Kermadec Islands, Clade 2 of specimens from the Australs and Gambier Islands, while specimens from Rapa Nui form Clade 3 (Figure 2). The Clade 2 (Australs - Gambier) appears more closely related to the sister species *Cirripectes obscurus* than to the two other *C. alboapicalis* clades (Rangitāhua clade and Rapa Nui clade). The results from the haplotype network corroborate our phylogenetic results, as *C. alboapicalis* haplotypes form three highly divergent haplogroups. A single haplotype (from two specimens) is found in Rangitāhua and is separated by 23 mutations from a second haplogroup comprising sequences from Rapa Nui. A third haplogroup is found in the Gambier and Austral Islands and is separated by 86 mutations from the Rapa Nui haplogroup. Interestingly, the sister species, *C. obscurus*, is positioned between Clades 2 and 3 (Figure 3). Net divergence estimates ranged from 3.7 % (Clade 1–Clade 3) to 9.2 % (Clade 1–Clade 2) among the three *C. alboapicalis* clades. In contrast, net divergence between the three *C. alboapicalis* clades and *C. obscurus* ranged from 7.4 % to 7.9%. *C. alboapicalis* is thus composed of three lineages that are on different evolutionary trajectories.

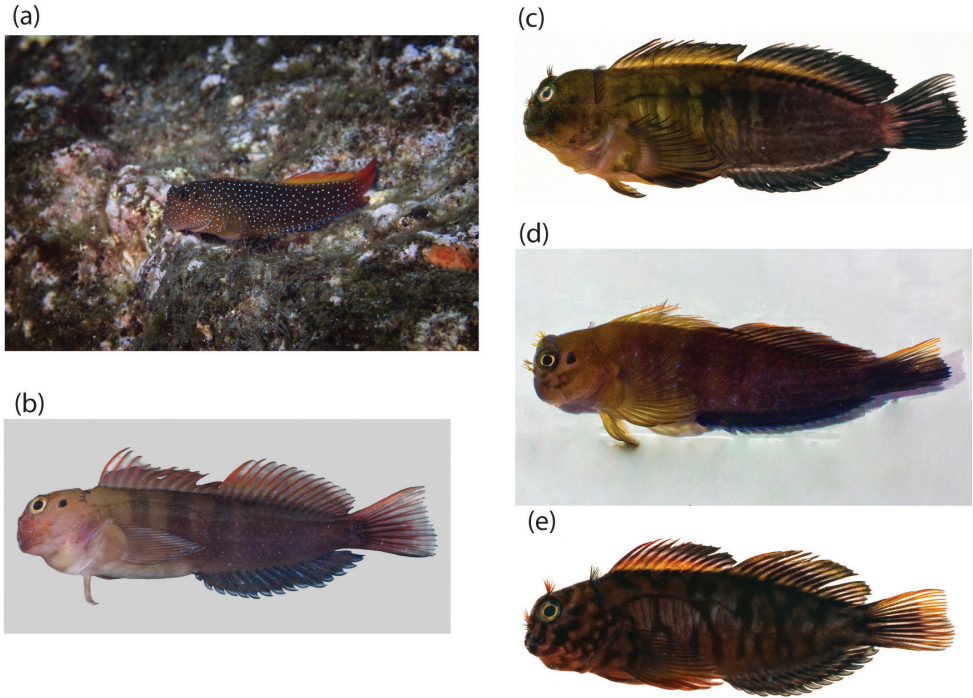
Our molecular analysis reveals the existence of at least three cryptic species within the single species previously referred to as *Cirripectes alboapicalis*. In recent years, molecular studies have been combined with morphological methods and these integrated studies have led to the discovery of many new species (e.g., Baldwin et al. 2011; Delrieu-Trottin et al. 2014; and Williams and Viviani 2016). Our results provide strong justification for a detailed morphological analysis to identify diagnostic morphological



**Figure 2.** Maximum Likelihood tree for COI sequences with sequences representative of the maximum number of species retrieved from GenBank and BOLD. GenBank numbers are reported while BOLD numbers are denoted with an asterisk (\*). Nodes show UFboot and SH-aLRT.







**Figure 4.** Pictures of specimens from the three genetic clades of this study; **a** live colors (photograph by Richard Robinson ([www.depth.co.nz](http://www.depth.co.nz))) and **b** freshly dead colors (photograph by Carl Struthers Museum of New Zealand Te Papa Tongarewa) of Clade 1 from Rangitāhua - Kermadec Islands **c** Clade 2, French Polynesia from Austral - Gambier Islands (photographs by Jeffrey T. Williams) **d** Clade 3 Rapa Nui (photograph by Erwan Delrieu-Trottin); and **e** *Cirripectes obscurus* (photograph by Jeffrey T. Williams).

*C. obscurus* may not be a Hawaiʻian endemic, but has an antitropical distribution (as defined by Hubbs (1952) and Randall (1981)), Williams (1988) also identified a potential *C. obscurus* specimen in the Cook Islands. Nonetheless, the rarity of such *C. obscurus* specimens in our collections from the South Pacific raises questions about the size of this southern population.

The full extent of the geographic distribution of the three clades identified in the blenniid *Cirripectes alboapicalis* species complex is unclear, as genetic samples from several locations across the range of this species complex are presently not available (e.g., Rapa Iti, Pitcairn Islands, Norfolk Island), and more importantly none from the type locality, Lord Howe Island. Nonetheless, the geographic distribution of the clades may follow general biogeographic patterns observed in other South Pacific species possessing a Rapa Nui population. Randall and Cea (2011) describe 17 southern subtropical fish species present in Rapa Nui including *C. alboapicalis*. Of these species, the muraenid *Gymnothorax porphyreus* has the broadest distribution, from the southern Great Barrier Reef (GBR) to South of Chile, while an additional six species have continuous ranges between the southern GBR and Rapa Nui (Table 2). The remaining 10 species have either a very restricted distribution (e.g., *Itycirrhitis wilhelmi*,



**Table 2.** List of subtropical reef fish species that are present in Rapa Nui, and their geographic distribution (following Randall and Cea 2011). From east to west - NSW: New South Wales, S.GBR: Southern Great Barrier Reef, LH: Lord Howe Island, Nor: Norfolk Island, NC: New Caledonia, N.NZ: Northern New Zealand, R-K: Rangitāhua-Kermadec Islands, A: Austral Islands, G: Gambier Islands, Rapa: Rapa Iti, Pit.: Pitcairn, RN: Rapa Nui, JFer: Juan Fernandez, SanF: San Felix (Desventuradas Islands), Chile. Total: the total number of locations where the species is present. The three colors for *Cirripectes alboapicalis* denote the different genetic clades (see Figure 3), and grey in this row indicates the locations where the clade affinities are unknown.

Species	NSW	S. GBR	LH	Nor	NC	N. NZ	R-K	A	G	RI	Pit	RN	JFer	SanF	Chile	Total
<i>Cirripectes alboapicalis</i>	1	1	1	1			1	1	1	1	1	1				10
<i>Gymnothorax porphyreus</i>			1	1	1	1	1			1		1	1	1	1	10
<i>Anampses femininus</i>	1	1	1		1			1	1	1	1	1				9
<i>Bodianus unimaculatus</i>	1	1	1	1		1	1			1		1				8
<i>Enchelycore ramosa</i>	1		1	1		1	1			1		1				7
<i>Trachypoma macracanthus</i>	1		1	1		1	1									5
<i>Centropyge hotumatua</i>								1		1	1	1				4
<i>Aseraggodes bahamondei</i>			1	1			1					1				4
<i>Priolepis psigmophila</i>							1			1		1				3
<i>Gymnothorax nasuta</i>										1	1	1				3
<i>Itycirrhitis wilhelmi</i>											1	1				2
<i>Goniistius plessisi</i>											1	1				2
<i>Chrysiptera rapanui</i>							1					1				2
<i>Bathystethus orientale</i>										1		1				2

*Goniistius plessisi*, *Centropyge hotumatua*) or disjunct distributions with populations in both Rangitāhua-Kermadec and Rapa Nui regions (e.g., *Aseraggodes bahamondei*, *Priolepis psigmophila*, *Chrysiptera rapanui*, see Table 2). This distribution pattern is identified as the Pitcairn-Kermadec “Province” by Rehder (1980) and includes Rapa Nui, Pitcairn, Rapa Iti, and the Rangitāhua-Kermadec Islands. Interestingly, our results suggest that the Rangitāhua-Kermadec and the Rapa Nui clades are closely related. The closest relatives of several Rapa Nui endemic species are endemic species of Rangitāhua (e.g., *Acanthistius fuscus* and *A. cinctus*, *Girella nebulosa* and *G. fimbriata*). It is thus highly likely that both the Kermadec and the Rapa Nui clades have very restricted distributions and emerged via an allopatric process following a chance colonization.

## Acknowledgements

We thank Rebeca Tepano, Nina, Taveke Olivares Rapu, Liza Garrido Toledo (SER-NAPESCA), Ludovic Tuki (Mesa del Mar), and the people of the Rapa Nui Island for their kind and generous support. Collections from Rangitāhua-Kermadec Islands were made possible by the *RV Braveheart* crew (Stoney Creek Shipping Company Ltd.), with support from the Auckland Museum Institute, Massey University, the Pew Charitable Trusts, and in collaboration with Natural History New Zealand. We are grateful for the support of Rangitāhua mana moana, the Māori iwi Ngāti Kuri and Te

Aupōuri and fieldwork help from J. David Aguirre, Phil Ross, and Sam McCormack. We thank Tea Frogier and Pierre Mery for their support of the Coralspot project at the Gambier Archipelago. The Coralspot expedition was funded by the “Contrat de projet Etat-Polynésie”, by the ANR “IMODEL” and the French Ministry for Environment, Sustainable Development and Transport (MEDDTL). The Austral Islands expedition was part of the Global Reef Expedition and the work presented here is based in part on specimens collected in the Austral Islands made possible due to the support of the Khaled bin Sultan Living Oceans Foundation. We are grateful to Pierre Sasal, Tom Cribb, René Galzin and Michel Kulbicki, for their field assistance in the Gambier and the Austral Islands, along with the crew of the *Claymore II* and of the *Golden Shadow*. E. Delrieu-Trottin was supported by FONDECYT Postdoctorado fellowship N°3160692 and P. Saenz- Agudelo by the FONDECYT Iniciación fellowship N°11140121. L. Liggins was supported by a Rutherford Foundation Postdoctoral Fellowship. The authors declare no conflict of interest. All applicable institutional guidelines for the care and use of animals were followed. Specimens were collected in Rapa Nui under permit No. 1042, March, 21<sup>th</sup> 2018 obtained from the Chilean Sub-secretary of Fishing, and No. 13270/24/162/Vrs., March, 29<sup>th</sup> 2018 obtained from Armada de Chile; Servicio Hidrografico y Oceanografico. Specimens were collected in Kermadec Islands under Authorization number: 47976-MAR from the New Zealand Department of Conservation. The Universidad Austral de Chile Ethical Care Committee and Biosecurity Protocol approved our use and handling of animals. Finally, we thank M. Erdmann for constructive comments on an earlier version of the manuscript.

## References

- Allen GR (2008) Conservation hotspots of biodiversity and endemism for Indo-Pacific coral reef fishes. *Aquatic Conservation: Marine and Freshwater Ecosystems* 18: 541–556. <https://doi.org/10.1002/aqc.880>
- Avice JC (2000) *Phylogeography: The History and Formation of Species*. Harvard University Press.
- Baldwin CC, Castillo CI, Weigt LA, Victor BC (2011) Seven new species within western Atlantic *Starksia atlantica*, *S. lepicoelia*, and *S. sluiteri* (Teleostei, Labrisomidae), with comments on congruence of DNA barcodes and species. *ZooKeys*: 79: 21–72. <https://doi.org/10.3897/zookeys.79.1045>
- Bellwood DR, Wainwright PC (2002) The History and Biogeography of Fishes on Coral Reefs. In: Sale PS (Ed.) *Coral Reef Fishes: dynamic and diversity in a complex ecosystem*. Elsevier, San Diego, 5–32. <https://doi.org/10.1016/B978-012615185-5/50003-7>
- Borodin NA (1927) A new blenny from the Hawaiian Islands. *American Museum Novitates* 281: 1–2.
- Briggs JC (2009) Diversity, endemism and evolution in the Coral Triangle. *Journal of Biogeography* 36: 2008–2010. <https://doi.org/10.1111/j.1365-2699.2009.02146.x>
- De Buen F (1963) Los peces de la Isla de Pascua. *Bol de la Soc de Biol de Concepcion* 35: 3–80.

- Carpenter KE, Springer VG (2005) The center of the center of marine shore fish biodiversity: The Philippine Islands. *Environmental Biology of Fishes* 72: 467–480. <https://doi.org/10.1007/s10641-004-3154-4>
- Connolly SR, Bellwood DR, Hughes TP (2003) Indo-pacific biodiversity of coral reefs: Deviations from a mid-domain model. *Ecology* 84: 2178–2190. <https://doi.org/10.1890/02-0254>
- Deck J, Gaither MR, Ewing R, Bird CE, Davies N, Meyer C, Riginos C, Toonen RJ, Crandall ED (2017) The Genomic Observatories Metadatabase (GeOME): A new repository for field and sampling event metadata associated with genetic samples. *PLoS Biology*. <https://doi.org/10.1371/journal.pbio.2002925>
- Delrieu-Trottin E, Williams JT, Planes S (2014) *Macropharyngodon pakoko*, a new species of wrasse (Teleostei: Labridae) endemic to the Marquesas Islands, French polynesia. *Zootaxa* 3857: 433–443. <https://doi.org/10.11646/zootaxa.3857.3.6>
- Felsenstein J (1985) Phylogenies and the Comparative Method. *The American Naturalist* 125: 1–15. <https://doi.org/10.1086/284325>
- Friedlander AM, Ballesteros E, Beets J, Berkenpas E, Gaymer CF, Gorny M, Sala E (2013) Effects of isolation and fishing on the marine ecosystems of Easter Island and Salas y Gómez, Chile. *Aquatic Conservation: Marine and Freshwater Ecosystems* 23: 515–531. <https://doi.org/10.1002/aqc.2333>
- Guindon S, Dufayard J-F, Lefort V, Anisimova M, Hordijk W, Gascuel O (2010) New algorithms and methods to estimate maximum-likelihood phylogenies: assessing the performance of PhyML 3.0. *Systematic biology* 59: 307–321. <https://doi.org/10.1093/sysbio/syq010>
- Hubbs CL (1952) Antitropical distribution of fishes and other organisms. Symposium on problems of bipolarity and of pantemperate faunas. *Proceedings of the Seventh Pacific Science Congress (Pacific Science Association)* 3: 324–329.
- Kalyaanamoorthy S, Minh BQ, Wong TKF, von Haeseler A, Jermiin LS (2017) ModelFinder: fast model selection for accurate phylogenetic estimates. *Nature Methods* 14: 587–589. <https://doi.org/10.1038/nmeth.4285>
- Kimura M (1980) A simple method for estimating evolutionary rates of base substitutions through comparative studies of nucleotide sequences. *Journal of Molecular Evolution* 16: 111–120. <https://doi.org/10.1007/BF01731581>
- Minh BQ, Nguyen MAT, von Haeseler A (2013) Ultrafast approximation for phylogenetic bootstrap. *Molecular Biology and Evolution* 30: 1188–1195. <https://doi.org/10.1093/molbev/mst024>
- Nguyen LT, Schmidt HA, von Haeseler A, Minh BQ (2015) IQ-TREE: A fast and effective stochastic algorithm for estimating maximum-likelihood phylogenies. *Molecular Biology and Evolution* 32: 268–274. <https://doi.org/10.1093/molbev/msu300>
- Ogilby JD (1899) Additions to the fauna of Lord Howe Island. *Proceedings of the Linnean Society of New South Wales* 23: 730–745.
- Paradis E (2010) pegas: an R package for population genetics with an integrated-modular approach. *Bioinformatics* 26: 419–420. <https://doi.org/10.1093/bioinformatics/btp696>
- R Core Team (2017) R: A Language and Environment for Statistical Computing. R Foundation for Statistical Computing, Vienna, Austria. <http://www.R-project.org/>

- Randall JE (1976) The endemic shore fishes of the Hawaiian Islands, Lord Howe Island and Easter Island. Colloque Commerson, 1973. ORSTOM Travaux et Documents 47: 49–73. [http://horizon.documentation.ird.fr/exl-doc/pleins\\_textes/pleins\\_textes\\_5/pt5/travaux\\_d/29300.pdf](http://horizon.documentation.ird.fr/exl-doc/pleins_textes/pleins_textes_5/pt5/travaux_d/29300.pdf)
- Randall JE (1981) Examples of antitropical and antiequatorial distribution of Indo-West-Pacific fishes. *Pacific Science* 35: 197–209.
- Randall JE, Cea A (2011) Shore Fishes of Easter Island. University of Hawai'i Press, 164 pp. <http://books.google.com/books?hl=en&lr=&id=iXtCTSRTcb8C&pgis=1>
- Ratnasingham S, Hebert PDN (2007) BOLD: The Barcode of Life Data System ([www.barcodinglife.org](http://www.barcodinglife.org)). *Molecular Ecology Notes* 7: 355–364. <https://doi.org/10.1111/j.1471-8286.2007.01678.x>
- Rehder HA (1980) The marine mollusks of Easter Island (Isla de Pascua) and Sala y Gómez. *Smithsonian Contributions to Zoology* 289: 1–176. <https://doi.org/10.5479/si.00810282.289>
- Tamura K, Stecher G, Peterson D, Filipski A, Kumar S (2013) MEGA6: molecular evolutionary genetics analysis version 6.0. *Molecular Biology and Evolution* 30: 2725–2729. <https://doi.org/10.1093/molbev/mst197>
- Ward RD, Zemlak TS, Innes BH, Last PR, Hebert PDN (2005) DNA barcoding Australia's fish species. *Philosophical Transactions of the Royal Society B: Biological Sciences* 360: 1847–1857. <https://doi.org/10.1098/rstb.2005.1716>
- Williams JT (1988) Revision and phylogenetic relationships of the blennioid fish genus *Cirripectes*. Bernice Pauahi Bishop Museum, 78 pp.
- Williams JT, Delrieu-Trottin E, Planes S (2012) A new species of Indo-Pacific fish, *Canthigaster criobe*, with comments on other *Canthigaster* (Tetraodontiformes: Tetraodontidae) at the Gambier Archipelago. *Zootaxa* 3523: 80–88.
- Williams JT, Viviani J (2016) *Pseudogramma polyacantha* complex (Serranidae, tribe Grammistini): DNA barcoding results lead to the discovery of three cryptic species, including two new species from French Polynesia. *Zootaxa* 4111: 246–260. <https://doi.org/10.11646/zootaxa.4111.3.3>