

Corrigenda: *Cherax warsamsonicus*, a new species of crayfish from the Kepala Burung (Vogelkop) peninsula in West Papua, Indonesia (Crustacea, Decapoda, Parastacidae) ZooKeys 660: 151–167. <https://doi.org/10.3897/zookeys.660.11847>

Christian Lukhaup¹, Rury Eprilurahman², Thomas von Rintelen³

1 Waldstrasse 5a, 66999 Hinterweidenthal, Germany **2** Animal Systematics Laboratory, Faculty of Biology, Universitas Gadjah Mada Jl. Teknika Selatan, Sekip Utara Yogyakarta 55281, Indonesia **3** Museum für Naturkunde -Leibniz Institute for Evolution and Biodiversity Science, Invalidenstrasse 43, 10115 Berlin, Germany

Corresponding author: *Christian Lukhaup* (craykeeper@gmx.de)

Academic editor: *P. Stoev* | Received 21 March 2017 | Accepted 23 March 2017 | Published 4 April 2017

<http://zoobank.org/9283383B-CC1F-49DF-B1D2-B81B07150000>

Citation: Lukhaup C, Eprilurahman R, Rintelen T (2017) Corrigenda: *Cherax warsamsonicus*, a new species of crayfish from the Kepala Burung (Vogelkop) peninsula in West Papua, Indonesia (Crustacea, Decapoda, Parastacidae) ZooKeys 660: 151–167. <https://doi.org/10.3897/zookeys.660.11847>. ZooKeys 665: 147–148. <https://doi.org/10.3897/zookeys.665.12850>

It has come to our attention that in the work referenced above Table 1 is incomplete. Furthermore, Figure 7 as printed therein is not the final version of that figure.

The correct versions of both Table 1 and Figure 7 are reproduced here below.

Table 1. Material studied with GenBank accession numbers.

Species/sample	Location	GenBank acc. nos	
		COI	16S
<i>Cherax albertisii</i>	Bensbach River, Papua New Guinea (Queensland Museum)	–	KJ920770
<i>C. boesemani</i>	Ajamaru Lake, Papua Barat; 1°17'19.97"S, 132°14'49.14"E; January 23, 2016	KY654084 KY654085	KY654089 KY654090
<i>C. holthuisi</i>	Papua Barat	KU821419	KU821433
<i>C. misolicus</i>	Misool Island, South of Papua Barat (Leiden Museum)	-	KJ920813
<i>C. monticola</i>	Baliem River, Wamena, Papua	KF649851 –	KF649851 KJ920818
<i>C. paniaicus</i>	Lake Tage, Papua (Field collection)	KJ950528	KJ920830
<i>C. peknyi</i>	Pet Shop	KU821422	KU821435
<i>C. pulcher</i>	Hoa Creek (Teminabuan), Papua Barat; 1°28'32.73"S, 132°3'54.94"E; January 23, 2016	KY654083	KY654088
<i>C. 'pulcher'</i>	Papua Barat (Pet Shop)	KU821424 KU821426	KU821438 KU821437
<i>C. rhynchotus</i>	Lake Wicheura, Cape York, Queensland (Queensland Museum)	–	KJ920765
<i>C. snowden</i>	Oinsok (Ainsok River Drainage), Papua Barat; 1°11'40.07"S, 131°50'1.14"E; January 24, 2016	KY654082	KY654087
<i>C. warsamsonicus</i>	Small tributary to Warsamson River, 0°49'16.62"S, 131°23'3.34"E; January 20, 2016	KY654086	KY654091
<i>Engaeus strictifrons</i>	Crawford River, Victoria, Australia	AF493633	AF492812
<i>Euastacus bispinosus</i>	Crawford River, Victoria, Australia	AF493634	AF492813

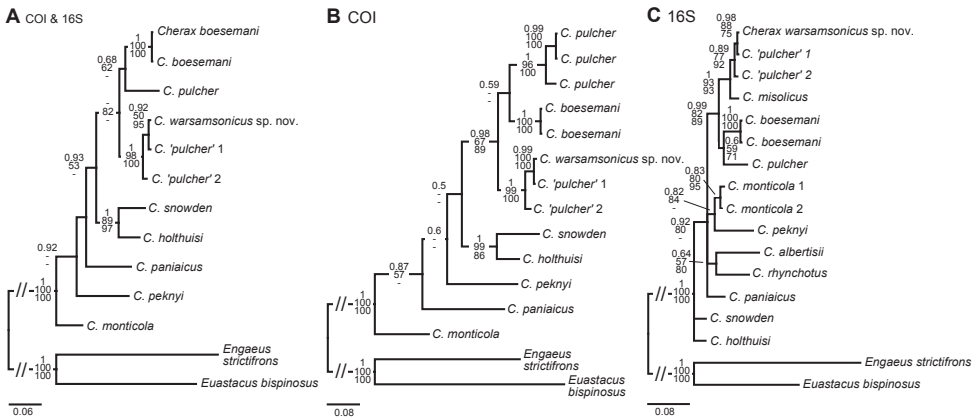


Figure 7. Phylogenetic position of *Cherax warsamsonicus* sp. n. within closely related New Guinean *Cherax* species, reconstructed by BI analyses of two mitochondrial gene fragments. Number on branches show, from top, Bayesian posterior probabilities and ML/MP bootstrap values. The scale bar indicates the substitution rate. See Table 1 for information on the sequenced specimens. **A** Topology based on concatenated COI and 16S dataset **B** Topology based on COI dataset **C** Topology based on 16S dataset.