

Contribution to the floristic knowledge of eastern Irpinia and Vulture-Melfese area (Campania and Basilicata, southern Italy)

Adriano Stinca¹, Giuseppina Chianese², Giuseppe D'Auria³, Simonetta Fascetti⁴, Maria Ravo⁵, Vito Antonio Romano⁴, Giovanni Salerno⁶, Giovanni Astuti⁷, Fabrizio Bartolucci⁸, Liliana Bernardo⁹, Gianmaria Bonari¹⁰, Daniela Bouvet¹¹, Laura Cancellieri¹², Emanuela Carli¹³, Giuseppe Caruso¹⁴, Immacolata Catalano¹⁵, Gennaro Domenico Cennamo¹⁶, Giampiero Ciaschetti¹⁷, Fabio Conti⁸, Romeo Di Pietro¹⁸, Paola Fortini¹⁹, Carmen Gangale²⁰, Maria Rita Lapenna⁴, Edda Lattanzi²¹, Rossella Marcucci²², Simonetta Peccenini²³, Riccardo Pennesi²⁴, Enrico Vito Perrino²⁵, Lorenzo Peruzzi⁷, Francesco Roma-Marzio²⁶, Anna Scoppola¹², Agnese Tilia²⁷, Mariacristina Villani²², Leonardo Rosati⁴

1 Dipartimento di Scienze e Tecnologie Ambientali, Biologiche e Farmaceutiche, Università della Campania Luigi Vanvitelli, Via A. Vivaldi 43, 81100 Caserta, Italy **2** Centro Museale “Musei delle Scienze Agrarie” MUSA, Università di Napoli Federico II, Via Università 100, 80055 Portici (Napoli), Italy **3** Servizio Fito-sanitario, Area Decentrata Agricoltura Lazio Sud, Regione Lazio, Via C. Romagnoli 25, 04100 Latina, Italy **4** Scuola di Scienze Agrarie, Forestali, Alimentari ed Ambientali, Università della Basilicata, Via Ateneo Luciano 10, 85100 Potenza, Italy **5** Genomix4Life S.r.l., Università di Salerno, Via S. Allende 1, 84081 Baronissi (Salerno), Italy **6** Via O. Coccanari 14, 00019 Tivoli (Roma), Italy **7** Dipartimento di Biologia, Università di Pisa, Via Derna 1, 56126 Pisa, Italy **8** Centro Ricerche Floristiche dell'Appennino (Università di Camerino - Parco Nazionale del Gran Sasso e Monti della Laga), Località San Colombo, 67021 Barisciano (L'Aquila), Italy **9** Dipartimento di Biologia, Ecologia e Scienze della Terra, Università della Calabria, Via P. Bucci snc, 87036 Arcavacata di Rende (Cosenza), Italy **10** Department of Botany and Zoology, Masaryk University, Kotlářská 2, 61137 Brno, Czech Republic **11** Dipartimento di Scienze della Vita e Biologia dei Sistemi, Università di Torino, Viale P.A. Mattioli 25, 10125 Torino, Italy **12** DAFNE, Dipartimento di Scienze Agrarie e Forestali, Università della Tuscia, Via San Camillo de Lellis snc, 01100 Viterbo, Italy **13** Dipartimento di Biologia Ambientale, Sapienza Università di Roma, Piazzale A. Moro 5, 00185 Roma, Italy **14** Istituto Tecnico Agrario “Vittorio Emanuele II”, Via V. Cortese 1, 88100 Catanzaro, Italy **15** Dipartimento di Scienze e Tecnologie, Università di Napoli Parthenope, Centro Direzionale Isola C4, 80143 Napoli, Italy **16** Laboratorio Fitopatologico, UOD Fitosanitario Regionale, Regione Campania, Via Don Bosco 9/E, 80141 Napoli, Italy **17** Ufficio Botanico, Parco Nazionale della Majella, Via Badia 28, 67039 Sulmona (L'Aquila), Italy **18** Dipartimento di Pianificazione, Design, Tecnologia dell'Architettura, Sapienza Università di Roma, Via Flaminia 72, 00196 Roma, Italy **19** Dipartimento di Bioscienze e Territorio, Università del Molise, Contrada Fonte Lappone, 86090 Pesche (Isernia), Italy **20** Museo di Storia Naturale e Orto Botanico, Università della

Calabria, Loc. Polifunzionale, 87036 Arcavacata di Rende (Cosenza), Italy **21** Via V. Cerulli 59, 00143 Roma, Italy **22** Centro di Ateneo Orto Botanico, Università di Padova, Via Orto Botanico 15, 35123 Padova, Italy **23** Dipartimento di Scienze dell'Ambiente, della Terra e della Vita, Università di Genova, Corso Europa 26, 16136 Genova, Italy **24** Herbarium Camerinensis (CAME) - Scuola di Bioscienze e Medicina Veterinaria, Università di Camerino, Via Pontoni 5, 62032 Camerino (Macerata), Italy **25** Istituto Agronomico Mediterraneo di Bari, Via Ceglie 9, 70010 Valenzano (Bari), Italy **26** Sistema Museale di Ateneo, Orto e Museo Botanico, Università di Pisa, Via L. Ghini 13, 56126 Pisa, Italy **27** Museo Erbario, Dipartimento di Biologia Ambientale, Sapienza Università di Roma, Piazzale A. Moro 5, 00185 Roma, Italy

Corresponding author: Adriano Stinca (adriano.stinca@unicampania.it; adriano.stinca@unina.it)

Academic editor: Gianniantonio Domina | Received 1 July 2019 | Accepted 1 September 2019 | Published 20 September 2019

Citation: Stinca A, Chianese G, D'Auria G, Fascetti S, Ravo M, Romano VA, Salerno G, Astuti G, Bartolucci F, Bernardo L, Bonari G, Bouvet D, Cancellieri L, Carli E, Caruso G, Catalano I, Cennamo GD, Ciaschetti G, Conti F, Di Pietro R, Fortini P, Gangale C, Lapenna MR, Lattanzi E, Marcucci R, Peccenini S, Pennesi R, Perrino EV, Peruzzi L, Roma-Marzio F, Scoppola A, Tilia A, Villani M, Rosati L (2019) Contribution to the floristic knowledge of eastern Irpinia and Vulture-Melfese area (Campania and Basilicata, southern Italy). Italian Botanist 8: 1–16. <https://doi.org/10.3897/italianbotanist.8.37818>

Abstract

In order to improve the floristic knowledge of the Italian territory, we report the inventory of the taxa collected during the annual field trip of the working group for Floristics, Systematics and Evolution of the Italian Botanical Society held in 2015 in eastern Irpinia and Vulture-Melfese area (South Italy). The investigated territories are located in southern Apennines, along the border between the Campania and Basilicata administrative regions. These areas are scarcely known in terms of vascular flora. The floristic samplings were performed in 19 sites selected as representative of the local environmental diversity as regards to climate, litho-morphology and land-use.

The research led to the identification of 4,137 specimens of vascular plants, belonging to 815 species and subspecies, 399 genera, and 85 families. Among these taxa, 42 were endemic to Italy, 38 were included in the IUCN Red List of the Italian Flora, 28 were alien and 5 were cryptogenic in Campania and/or Basilicata administrative regions. Two taxa, *Aquilegia coerulea* (casual alien, native to North America) and *Lolium ×boucheanum* (native), were found to be new for Italy. On the basis of the available floristic literature the first one is also to be considered new for the European flora. At regional scale, we have found 18 taxa new for the Campania and 15 new for the Basilicata region. Finally, 10 taxa were confirmed for Campania. Data obtained during this study, confirmed the important role of a collaborative approach among botanists and the great relevance of these territories for plant diversity.

Keywords

alien species, botanists, endemics, herbaria, Italian vascular flora, new floristic records, plant diversity, southern Apennines

Introduction

The floristic knowledge of a territory is of considerable importance for scientific purposes and for conservation (Carli et al. 2018). In particular, the information concerning the endemic plants, such as their distribution and threats, are key elements for driv-

ing national conservation strategies (Brundu et al. 2017, Orsenigo et al. 2018). Wild vascular plants were recently used in some areas of Central-South Italy to evaluate the long-term changes in the floristic composition of vegetation of mountain ecosystems (Calabrese et al. 2018, Frate et al. 2018) and for risk assessment and management of soils polluted by industrial processes (Visconti et al. 2018). In the last two decades, the activities of the working group for Floristics, Systematics and Evolution of the Italian Botanical Society have greatly improved the knowledge about the vascular flora of some scarcely known areas of the Italian territory by using a collaborative approach (Peccenini et al. 2007, 2010, Peruzzi et al. 2011, Bouvet et al. 2018, Bartolucci et al. 2019a). This has been particularly fruitful in the southern part of Italian Peninsula (Conti et al. 2006, 2007, Santangelo et al. 2010, Bernardo et al. 2012, Wagensommer et al. 2014, Domina et al. 2015, Rosati et al. 2017, in press). Herein, we present the results of the floristic field excursion held in 2015 in eastern Irpinia and Vulture-Melfese area in southern Apennines (Italy). This research aims at improving the floristic knowledge of these areas which are located at the boundary between the administrative regions of Basilicata and Campania. According to Scoppola and Blasi (2005) and Blasi et al. (2011) these areas were included among those for which the available floristic data were absent or particularly scarce.

Materials and methods

Study area

The study area includes territories located within the border between the Campania and the Basilicata administrative regions in southern Italy (Fig. 1) falling within the administrative provinces of Avellino (municipalities of Aquilonia, Bisaccia, Monteverde and Trevico) and Potenza (municipalities of Atella, Bella, Melfi, San Fele and Rionero in Vulture). The administrative border between the two regions is represented by the Ofanto River, which separates the eastern Irpinia (Campania region) from the Vulture-Melfese area (Basilicata region). The altitude ranges from 275 m a.s.l. of Ofanto River, to 1407 m a.s.l. at the top of Mt. Santa Croce. From a climatic and biogeographic point of view, the investigated area is respectively intermediate between the Mediterranean and the Temperate region at the crossroads between the Apennine-Balkan, Italo-Tyrrhenian and Adriatic provinces (Rivas-Martínez et al. 2004).

Based on meteorological data retrieved from the station located at Monticchio Bagni (Rionero in Vulture, province of Potenza, 652 m a.s.l., Suppl. material 1: S1), the mean annual rainfall is 815 mm, and it is concentrated in the autumn-winter period with a maximum in November and a minimum in August. The annual average temperature is 13.7 °C, with the hottest months in summer (July-August) and the coldest in winter (December). The thermo-pluviometric diagram (Spicciarelli 2013, Suppl. material 1: S1) highlights a Mediterranean climate characterized by two months of summer drought period.

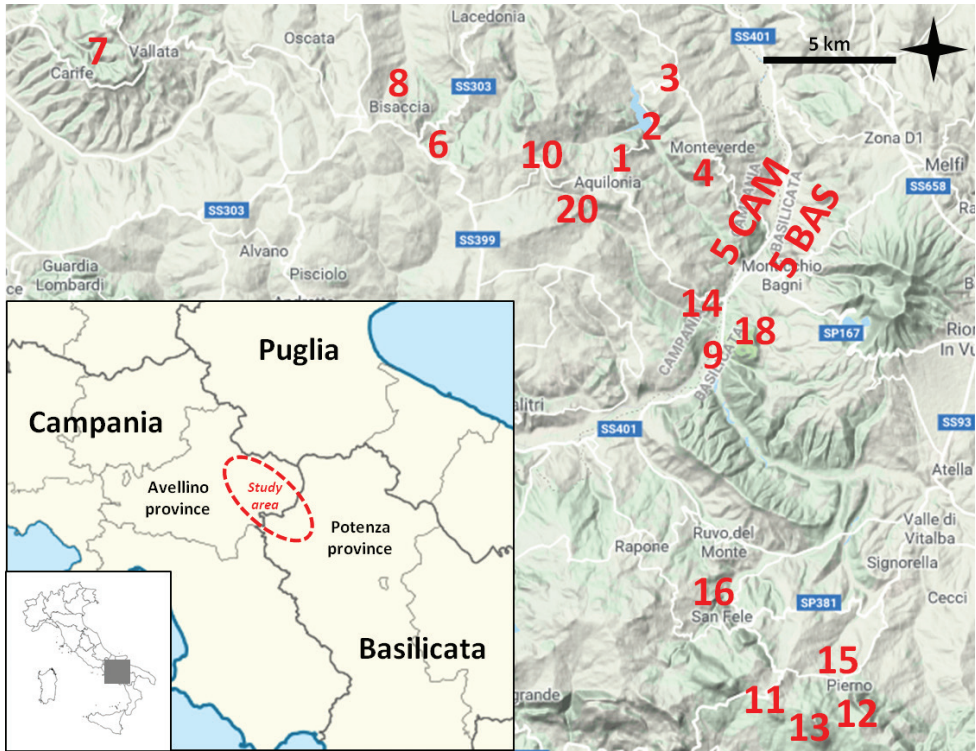


Figure 1. Location of study area and sampling sites (for details, see Suppl. materials 1: S2 and S3_1–S3_8).

The substrates of the study area are mainly composed of pelitic sediments (Flysch Rosso, Flysch Galestrino) and marginally of arenaceous sediments (Flysch Numidico), shaped in a hilly-mountainous landscape deeply dissected by the Ofanto River (Schiattarella et al. 2016). The Triassic-Tertiary units of the Lagonegrese Basin, here represented by thick flyschoid sediments overthrust on previous carbonatic formations, occur only in the western part of the study area (Mt. Pierno).

The vascular flora of Irpinia and surrounding areas, was only partially explored between the end of the 19th and the beginning of the 20th century by Trotter (1905a, 1905b, 1906a, 1906b, 1908, 1909, 1910, 1913), Baccarini (1891), and Ferraris (1900, 1906).

Floristic survey

The research was coordinated by group of organisers (A. Stinca, L. Rosati, G. Chianese, G. D’Auria, S. Fascetti, M. Ravo, V. A. Romano and G. Salerno) who draw up the final floristic list with the contribution of all participants to the study. In order to maximize the identifiable taxonomic diversity within the surveyed area, 19 sites

of collection were selected as representative of the local diversity in terms of climate, litho-morphology, and land-use (Suppl. material 1: S2 and S3_1–S3_8). Some of these sites were included in protected areas, such as Natura 2000 sites or Vulture Regional Park (Suppl. material 1: S2). The aforementioned sites were intensively sampled during the period 3–6 June 2015 by 35 researchers (Suppl. material 1: S4). Further investigations were carried out only by the organizers on 18 December 2014, 22 April 2015, 13 and 27 May 2015 (Suppl. material 1: S2). In order to avoid destructive collections the sampling of the orchids was limited to very few individuals and more often substituted or supplemented by photographs. The floristic list was prepared in accordance to the protocol already used in previous contributions (e.g., Rosati et al. 2017, Bouvet et al. 2018, Bartolucci et al. 2019a). The taxonomic identification was carried out at first by the single collectors using standard floras (e.g., Tutin et al. 1968, 1972, 1976, 1980, 1993, Pignatti 1982) and other works (e.g., Christensen 1992, Whittemore 1997). Subsequently, the most critical specimens were revised during two specific workshops held at Portici (Library of Agriculture and Department of Agricultural Sciences of the University of Naples Federico II; 19 participants: L. Bernardo, L. Cancellieri, G. Chianese, G. Ciaschetti, F. Conti, G. D’Auria, R. Di Pietro, S. Fascetti, P. Fortini, C. Gangale, E. Lattanzi, S. Peccenini, E.V. Perrino, M. Ravo, F. Roma-Marzio, L. Rosati, G. Salerno, A. Scoppola, A. Stinca and A. Tilia) and Barisciano (Apennine Floristic Research Center; 10 participants: F. Bartolucci, L. Cancellieri, G. Ciaschetti, F. Conti, S. Fascetti, R. Pennesi, L. Rosati, G. Salerno, A. Scoppola and A. Stinca), on 3–5 March 2016 and 4–5 April 2016, respectively (Suppl. material 1: S5). Herbarium specimens belonging to the following critical groups were sent to specialists for revision: *Anchusella* and *Echium* (L. Cecchi, Florence), *Aquilegia* (E. Nardi, Florence), *Orobanchae* (G. Domina, Palermo), *Pilosella* (G. Gottschlich, Tübingen), and Poaceae (E. Banfi, Milan). Finally, some doubtful specimens were also verified with the recent Flora d’Italia (Pignatti et al. 2017a, 2017b, 2018, 2019).

In the floristic list, taxa are alphabetically ordered. Nomenclature and taxa delimitation follow the checklist of Italian vascular flora (Bartolucci et al. 2018a, Galasso et al. 2018a) and recent updates (Bartolucci et al. 2018b, 2018c, 2019b, Galasso et al. 2018b, 2018c, 2019), with the exception of varieties and native hybrids which were not considered in the above-mentioned works. For some taxa one or more synonyms (preceded by the following symbols: “≡” for homotypic synonyms, i.e. for nomenclatural synonyms; “=” for heterotypic synonyms, i.e. for taxonomic synonyms; “–” for misapplied names) were reported in brackets to enhance understanding of the nomenclature updating. For each taxon, we reported the site of collection (using the codes given in Suppl. material 1: S2) and the herbaria where the specimens were deposited. For each taxon identified, at least one exsiccatum was prepared to be preserved in a public (Suppl. material 1: S6_1, acronyms follow to Thiers 2019) or private (Suppl. material 1: S6_2) herbarium.

Results

After the research, 4,137 specimens of vascular plants were identified, including 6 Orchidaceae documented only by digital photographs. These were classified in 814 species and subspecies, belonging to 399 genera and 85 families (Suppl. material 1: S7 and S8), together with 4 hybrids (*Crataegus* × *media* Bech., *Lolium* × *boucheanum* Kunth, *Medicago* × *varia* Martyn and *Vitis* × *koberi* Ardenghi, Galasso, Banfi & Lastrucci), and 1 cultivar of *Viola tricolor* L. subsp. *tricolor*.

Forty-two taxa (5.2% of the total flora detected, Table 1) were found to be endemic to Italy (Peruzzi et al. 2014, 2015, Bartolucci et al. 2018a), while 28 taxa (3.4%) were found to be alien for the study area (Bartolucci et al. 2018a, Galasso et al. 2018a).

Five taxa (0.6% of the total flora), *Brassica nigra* (L.) W.D.J.Koch, *Gladiolus italicus* Mill., *Melissa officinalis* L. subsp. *officinalis*, *Oxalis corniculata* L. and *Papaver rhoeas* L. subsp. *rhoeas*, were considered cryptogenic in the investigated area (Bartolucci et al. 2018a, Galasso et al. 2018a).

Forty-three units (5.3% of the total flora) were found to be new floristic records. In particular, *Aquilegia coerulea* E.James (casual alien) and *Lolium* × *boucheanum* Kunth (native) are recorded for the first time in Italy.

As reported below, 18 and 15 taxa were found to be new for the regional flora of Campania (Table 2) and Basilicata (Table 3), respectively.

This research also allowed to confirm 10 taxa for the flora of Campania (Table 4).

Table 1. List of Italian endemic taxa surveyed in the eastern Irpinia and Vulture-Melfese area.

<i>Acer cappadocicum</i> Gled. subsp. <i>lobelii</i> (Ten.) A.E.Murray	<i>Koeleria lucana</i> Brullo, Giusso & Miniss.
<i>Achillea rupestris</i> Huter, Porta & Rigo subsp. <i>calcareae</i> (Huter, Porta & Rigo) Greuter	<i>Leontodon intermedius</i> (Fiori) Huter, Porta & Rigo
<i>Aristolochia clusii</i> Lojac.	<i>Linaria purpurea</i> (L.) Mill.
<i>Armeria macropoda</i> Boiss.	<i>Luzula sylvatica</i> (Huds.) Gaudin subsp. <i>sicula</i> (Parl.) K.Richt.
<i>Artemisia campestris</i> L. subsp. <i>variabilis</i> (Ten.) Greuter	<i>Myosotis sylvatica</i> Hoffm. subsp. <i>elongata</i> (Strobl) Grau
<i>Campanula fragilis</i> Cirillo subsp. <i>fragilis</i>	<i>Ononis oligophylla</i> Ten.
<i>Carduus corymbosus</i> Ten.	<i>Ophrys lucana</i> P.Delforge, Devillers-Tersch. & Devillers
<i>Carduus nutans</i> L. subsp. <i>perspinosus</i> (Fiori) Arènes	<i>Ophrys tenthredinifera</i> Willd. subsp. <i>neglecta</i> (Parl.) E.G.Camus
<i>Centaurea centauroides</i> L.	<i>Ornithogalum etruscum</i> Parl. subsp. <i>etruscum</i>
<i>Cerastium tomentosum</i> L.	<i>Ornithogalum exscapum</i> Ten.
<i>Crocus biflorus</i> Mill.	<i>Polygala nicaeensis</i> Risso ex W.D.J.Koch subsp. <i>peninsularis</i> Arrigoni
<i>Crocus imperati</i> Ten.	<i>Potentilla calabra</i> Ten.
<i>Dianthus carthusianorum</i> L. subsp. <i>tenorei</i> (Lacaita) Pignatti	<i>Pulmonaria vallisarvae</i> A.Kern. subsp. <i>apennina</i> (Cristof. & Puppi) L.Cecchi & Selvi
<i>Dianthus vulturius</i> Guss. & Ten. subsp. <i>vulturius</i>	<i>Scorzonera hispanica</i> L. subsp. <i>neapolitana</i> (Grande) Greuter
<i>Digitalis micrantha</i> Roth ex Schweigg.	<i>Scorzonera villosa</i> Scop. subsp. <i>columnae</i> (Guss.) Nyman
<i>Drymochloa drymeja</i> (Mert. & W.D.J.Koch) Holub subsp. <i>exaltata</i> (C.Presl) Foggi & Signorini	<i>Silene italica</i> (L.) Pers. subsp. <i>sicula</i> (Ucria) Jeanm.
<i>Echinops siculus</i> Strobl	<i>Siler montanum</i> Crantz subsp. <i>siculum</i> (Spreng.) Iamónico, Bartolucci & F.Conti
<i>Erysimum apenninum</i> Peccenini & Polatschek	<i>Stipa austroitalica</i> Martinovský subsp. <i>austroitalica</i>
<i>Euphorbia corallioides</i> L.	<i>Thymus picentinus</i> (Lacaita) Bartolucci
<i>Klasea flavescens</i> (L.) Holub subsp. <i>cichoracea</i> (L.) Greuter & Wagenitz	<i>Tragopogon cupanii</i> Guss. ex DC.
<i>Knautia calycina</i> (C.Presl) Guss.	<i>Viola aethnensis</i> (Ging. & DC.) Strobl subsp. <i>splendida</i> (W.Becker) Merxm. & Lippert

Table 2. List of taxa new for Campania.

<i>Achillea nobilis</i> L. subsp. <i>nobilis</i>	<i>Mantisalca duriaei</i> (Spach) Briq. & Cavill.
<i>Aquilegia coerulea</i> E.James (casual alien)	<i>Medicago ×varia</i> Martyn
<i>Aristolochia clusii</i> Lojac.	<i>Medicago glutinosa</i> M.Bieb.
<i>Bromus hordeaceus</i> L. subsp. <i>longipedicellatus</i> Spalton	<i>Medicago muricoleptis</i> Tineo
<i>Bromus hordeaceus</i> L. subsp. <i>molliformis</i> (J.Lloyd ex Billot) Maire & Weiller	<i>Ophrys funerea</i> Viv.
<i>Cachrys libanotis</i> L.	<i>Papaver pinnatifidum</i> Moris
<i>Festuca stricta</i> Host subsp. <i>trachyphylla</i> (Hack.) Patzke ex Pils	<i>Philadelphus coronarius</i> L. (casual alien)
<i>Ficaria verna</i> Huds. subsp. <i>verna</i>	<i>Rosa deseglisei</i> Boreau
<i>Lolium ×boucheanum</i> Kunth (casual alien)	<i>Viola tricolor</i> L. subsp. <i>tricolor</i> cv. (casual alien)

Table 3. List of taxa new for Basilicata.

<i>Achillea nobilis</i> L. subsp. <i>nobilis</i>	<i>Pilosella ziziana</i> (Tausch) F.W.Schultz & Sch.Bip.
<i>Aristolochia rotunda</i> L. subsp. <i>rotunda</i>	<i>Polycarpon tetraphyllum</i> (L.) L. subsp. <i>tetraphyllum</i>
<i>Bromus hordeaceus</i> L. subsp. <i>longipedicellatus</i> Spalton	<i>Rosa deseglisei</i> Boreau
<i>Koeleria pyramidata</i> (Lam.) P.Beauv.	<i>Ruscus hypoglossum</i> L.
<i>Lathyrus inconspicuus</i> L.	<i>Saxifraga stolonifera</i> Curtis (casual alien)
<i>Melissa officinalis</i> L. subsp. <i>officinalis</i> (cryptogenic)	<i>Sonchus asper</i> (L.) Hill subsp. <i>glaucescens</i> (Jord.) Ball
<i>Ornithogalum etruscum</i> Parl. subsp. <i>etruscum</i>	<i>Thymus ×korbii</i> Ronniger. nothosubsp. <i>korbii</i>
<i>Orobanche teucrii</i> Holandre	

Table 4. List of taxa confirmed for Campania.

<i>Catananche lutea</i> L.	<i>Phalaris truncata</i> Guss. ex Bertol.
<i>Chaerophyllum nodosum</i> (L.) Crantz	<i>Rubia tinctorum</i> L. (casual alien)
<i>Echinaria capitata</i> (L.) Desf.	<i>Rumex thyrsoides</i> Desf.
<i>Neslia paniculata</i> (L.) Desv. subsp. <i>thracica</i> (Velen.) Bornm.	<i>Sclerochloa dura</i> (L.) P.Beauv.
<i>Phalaris aquatica</i> L.	<i>Scorzonera hispanica</i> L. subsp. <i>neapolitana</i> (Grande) Greuter

Discussion

Data obtained shows that the eastern Irpinia and Vulture-Melfese area hosts a rich and interesting vascular flora. Except for *Aristolochia clusii*, *Digitalis micrantha*, *Ononis oligophylla* and *Ophrys tenthredinifera* subsp. *neglecta*, all the other Italian endemic taxa recorded are currently included in the IUCN Red List of the Italian Flora (Rossi et al. 2013, Orsenigo et al. 2018) together with the non-endemic *Orchis provincialis* Balb. ex Lam. & DC. (38 taxa, 4.7% of the total flora). As regards *Thymus picentinus*, the specimens collected during this study allowed Bartolucci and Mráz (2016) to confirm the occurrence of this taxon in Basilicata and to re-evaluate its taxonomic status.

Among the non-native plants, 18 taxa were neophyte and 8 were considered invasive in at least one of the administrative regions considered (*Ailanthus altissima*, *Amaranthus retroflexus*, *Crepis sancta* subsp. *nemausensis*, *Dysphania ambrosioides*, *Erigeron sumatrensis*, *Paspalum distichum*, *Robinia pseudoacacia* and *Veronica persica*).

A small population of *Aquilegia coerulea*, a neophyte native to North America (Whittemore 1997), was found in Aquilonia (Campania, Avellino province) in anthropogenic environments. These individuals much likely derived from nearby cultivated plants seeds. Based on our floristic literature research (e.g., Nardi 2017), this record is the first for

the European flora. *Lolium ×boucheanum*, that is the natural hybrid between *Lolium perenne* L. and *L. multiflorum* Lam., it was collected in a marginal area of Monteverde (Campania, Avellino province) and is reported for the first time in Italy. As far as *Bromus hordeaceus* subsp. *longipedicellatus*, before this study its Italian distribution was restricted to Lombardia and Sardegna (Bartolucci et al. 2018a). Our findings of this taxon in Campania and Basilicata (Table 2 and Table 3) are therefore to be considered the first records for the peninsular Italy. Likewise, the discovery of *Medicago glutinosa* in Campania (Table 2) confirms its presence in southern Italy. Indeed, this species was reported only for Lombardia, Veneto, Liguria and Toscana, while was no longer recorded for Emilia-Romagna, and is considered doubtful in Umbria, Marche and Calabria (Bartolucci et al. 2018a).

Saxifraga stolonifera too is currently recorded in Lombardia and Veneto, while it is no longer recorded in Liguria (Galasso et al. 2018a). Therefore, our record from Basilicata (Table 3) is the first for the peninsular Italy.

In addition to the 11 taxa that we confirmed for Campania (Table 4), the observations made during this study also allowed Scoppola et al. (2016) to confirm the presence of *Trifolium multistriatum* W.D.J.Koch for the same region.

Some of the specimens collected in the study area require additional investigations aimed to clarify their taxonomic status. For example, the complex of *Centaurea deusta* shows a considerable variability in Italy (Stinca et al. 2019a). The samples found are probably attributable to a new taxon under study.

In recent years, especially in Campania, some researchers have focused their attention on the territories that are not well known from a floristic point of view, such as the lowlands and urbanized areas (e.g., Stinca et al. 2016, 2017a, Motti et al. 2018, Croce et al. 2019, Stinca 2019, Stinca and Mei in press). Some studies were carried out also in well-known areas from a floristic point of view, that have allowed to update their flora (e.g., Rosati et al. 2012, Stinca and Motti 2013, Stinca et al. 2014, 2017b, 2019b, Salerno and Stinca 2017, Stinca 2017). The floristic exploration of eastern Irpinia and Vulture-Melfese area, although carried out in a few days and in a limited number of sampling localities, allowed recording a considerable amount of taxa. The high number of species of floristic interest found, as well as the numerous floristic novelties suggest a high biodiversity level of the eastern Irpinia and Vulture-Melfese area, which are areas poorly studied by botanists in the past but that deserve further research.

Acknowledgements

We are very grateful to: E. Banfi, L. Cecchi, G. Domina, G. Gottschlich and E. Nardi for the revisions of critical specimens; M. Lorito, N. Madonna and S. Mazzoleni for hosting the workshop held at Portici in the Library of Agriculture and Department of Agricultural Sciences of the University of Naples Federico II; R. Motti and R. Spicciarelli for guiding us in the Botanical Garden of Portici and Grotticelle Oriented Nature Reserve of Rionero in Vulture, respectively; A. Ferretti, U. Silvestri, A.G. Stinca and C. Verdoliva for their assistance during the workshop held at Portici; P. Di Gala for the kind hospitality at the Hotel Ristorante “Lo Smeraldo” in Aquilonia.

References

- Baccarini P (1891) Materiali per la Flora Irpina. *Nuovo Giornale Botanico Italiano* 23(1): 47–68.
- Bartolucci F, Cancellieri L, Conti F, Banfi E, Bouvet D, Celestini M, Ciaschetti G, Di Pietro R, Falcinelli F, Fascetti S, Galasso G, Lattanzi E, Masin RR, Pennesi R, Rosati L, Stinca A, Tilia A, Forte TGW, Scoppola A (2019a) Contribution to the floristic knowledge of Velino and Aterno valleys (Lazio-Abruzzo, central Italy). *Italian Botanist* 7: 93–100. <https://doi.org/10.3897/italianbotanist.7.34697>
- Bartolucci F, Domina G, Alessandrini A, Angiolini C, Ardenghi NMG, Bacchetta G, Banfi E, Bolpagni R, Bonari G, Bräuchler C, Calvia G, Cancellieri L, Cannucci S, Carruggio F, Conti F, Cavallaro V, Fanfarillo E, Ferretti G, Festi F, Fiaschi T, Foggi B, Forte L, Fröhner SE, Galasso G, Gestri G, Gottschlich G, Labadessa R, Lastrucci L, Lazzaro L, Mereu G, Morabito A, Mugnai M, Musarella CM, Orsenigo S, Paziienza G, Pennesi R, Peruzzi L, Pierini B, Podda L, Prosser F, Rossi G, Scoppola A, Spampinato G, Stinca A, Tomaselli V, Zangari G, Nepi C (2019b) Notulae to the Italian native vascular flora: 7. *Italian Botanist* 7: 125–148. <https://doi.org/10.3897/italianbotanist.7.36148>
- Bartolucci F, Domina G, Ardenghi NMG, Bacchetta G, Bernardo L, Buccomino G, Buono S, Caldararo F, Calvia G, Carruggio F, Cavagna A, D'Amico FS, Di Carlo F, Festi F, Forte L, Galasso G, Gargano D, Gottschlich G, Lazzaro L, Magrini S, Maiorca G, Medagli P, Mei G, Mennini F, Mereu G, Misericocchi D, Olivieri N, Passalacqua NG, Paziienza G, Peruzzi L, Prosser F, Rempicci M, Roma-Marzio F, Ruggero A, Sani A, Saulle D, Stefanini C, Stinca A, Terzi M, Tondi G, Trenchi M, Viciani D, Wagensommer RP, Nepi C (2018c) Notulae to the Italian native vascular flora: 6. *Italian Botanist* 6: 45–64. <https://doi.org/10.3897/italianbotanist.6.30575>
- Bartolucci F, Domina G, Ardenghi NMG, Banfi E, Bernardo L, Bonari G, Buccomino G, Calvia G, Carruggio F, Cavallaro V, Chianese G, Conti F, Facioni L, Del Vico E, Di Gristina E, Falcinelli, Forte L, Gargano D, Mantino F, Martino M, Mei G, Mereu G, Olivieri N, Passalacqua NG, Paziienza G, Peruzzi L, Roma-Marzio F, Scafidi F, Scoppola A, Stinca A, Nepi C (2018b) Notulae to the Italian native vascular flora: 5. *Italian Botanist* 5: 71–81. <https://doi.org/10.3897/italianbotanist.5.25892>
- Bartolucci F, Mráz P (2016) New combination in the genus *Thymus* and clarification on the type material of *Th. thracicus* (Lamiaceae). *Phytotaxa* 263(2): 161–164. <https://doi.org/10.11646/phytotaxa.263.2.9>
- Bartolucci F, Peruzzi L, Galasso G, Albano A, Alessandrini A, Ardenghi NMG, Astuti G, Bacchetta G, Ballelli S, Banfi E, Barberis G, Bernardo L, Bouvet D, Bovio M, Cecchi L, Di Pietro R, Domina G, Fascetti S, Fenu G, Festi F, Foggi B, Gallo L, Gottschlich G, Gubellini L, Iamonico D, Iberite M, Jiménez-Mejías P, Lattanzi E, Marchetti D, Martinetto E, Masin RR, Medagli P, Passalacqua NG, Peccenini S, Pennesi R, Pierini B, Poldini L, Prosser F, Raimondo FM, Roma-Marzio F, Rosati L, Santangelo A, Scoppola A, Scortegagna S, Selvaggi A, Selvi F, Soldano A, Stinca A, Wagensommer RP, Wilhelm T, Conti F (2018a) An updated checklist of the vascular flora native to Italy. *Plant Biosystems* 152(2): 179–303. <https://doi.org/10.1080/11263504.2017.1419996>
- Bernardo L, Bartolucci F, Cancellieri L, Costalonga S, Galasso G, Galesi R, Gargano D, Iberite M, Iocchi M, Lattanzi E, Lavezzo P, Magrini S, Peccenini S, Sciandrello S, Scoppola A,

- Signorino G, Tilia A, Spampinato G (2012) Contributo alla conoscenza floristica della Calabria: resoconto dell'escursione del Gruppo di Floristica (S.B.I.) nel 2008 nella Presila catanzarese. *Informatore Botanico Italiano* 44(1): 125–151.
- Blasi C, Marignani M, Copiz R, Fipaldini M, Bonacquisti S, Del Vico E, Rosati L, Zavattero L (2011) Important Plant Areas in Italy: From data to mapping. *Biological Conservation* 144(1) 220–226. <https://doi.org/10.1016/j.biocon.2010.08.019>
- Bouvet D, Pistarino A, Soldano A, Banfi E, Barbo M, Bartolucci F, Bovio M, Cancellieri L, Conti F, Di Pietro R, Faraoni F, Fascetti S, Galasso G, Gangale C, Lattanzi E, Peccenini S, Perrino EV, Masin RR, Romano VA, Rosati L, Salerno G, Stinca A, Tilia A, Uzunov D (2018) Contribution to the floristic knowledge of the head of the Po Valley (Piedmont, north Italy). *Italian Botanist* 5: 57–69. <https://doi.org/10.3897/italianbotanist.5.24546>
- Brundu G, Peruzzi L, Domina G, Bartolucci F, Galasso G, Peccenini S, Raimondo FM, Albano A, Alessandrini A, Banfi E, Barberis G, Bernardo L, Bovio M, Brullo S, Brunu A, Camarda I, Carta L, Conti F, Croce A, Iamónico D, Iberite M, Iiriti G, Longo D, Marsili S, Medagli P, Mariotti MG, Pennesi R, Pistarino A, Salmeri C, Santangelo A, Scasellati E, Selvi F, Stinca A, Vacca G, Villani M, Wagensommer RP, Passalacqua NG (2017) At the intersection of cultural and natural heritage: distribution and conservation of the type localities of Italian endemic vascular plants. *Biological Conservation* 214: 109–118. <https://doi.org/10.1016/j.biocon.2017.07.024>
- Calabrese V, Carranza ML, Evangelista A, Marchetti M, Stinca A, Stanisci A (2018) Long term changes in the composition, ecology and structure of *Pinus mugo* scrubs in the Apennines (Italy). *Diversity* 10(3): 70. <https://doi.org/10.3390/d10030070>
- Carli E, Frondoni R, Pinna MS, Bacchetta G, Fenu G, Fois M, Marignani M, Puddu S, Blasi C (2018) Spatially assessing plant diversity for conservation: a Mediterranean case study. *Journal for Nature Conservation* 41: 35–43. <https://doi.org/10.1016/j.jnc.2017.11.003>
- Casali C (1901) *Flora Irpina*. Regia Scuola di Viticoltura ed Enologia di Avellino. Tipografia E. Pergola, Avellino.
- Casali C, Ferraris T (1900) Materiali per la Flora Irpina. *Nuovo Giornale Botanico Italiano* n.s. 7(3): 215–232.
- Casali C, Ferraris T (1901) Nuovi materiali per la Flora Irpina. *Bullettino della Società Botanica Italiana* 1901(2–3): 86–92.
- Christensen KI (1992) Revision of *Crataegus* sect. *Crataegus* and nothosect. *Crataegineae* (Rosaceae-Maloideae) in the Old World. *Systematic Botany Monographs* 35: 1–199. <https://doi.org/10.2307/25027810>
- Conti F, Angiolini C, Bernardo L, Costalonga S, Di Pietro R, Fascetti S, Giardina G, Giovi E, Gubellini L, Lattanzi E, Lavezzo P, Peccenini S, Salerno G, Scoppola A, Tinti D, Turrise R (2006) Contributo alla conoscenza floristica della Basilicata: resoconto dell'escursione del gruppo di floristica (S.B.I.) nel 2003. *Informatore Botanico Italiano* 38(2): 383–409.
- Conti F, Bartolucci F, Tinti D, Bernardo L, Costalonga S, Lattanzi E, Lavezzo P, Salerno G, Fascetti S, Iocchi M, Mele C, Tardella FM (2007) Secondo contributo alla conoscenza floristica della Basilicata: resoconto dell'escursione del Gruppo di Floristica (S.B.I.) nel 2004. *Informatore Botanico Italiano* 31(1): 11–33.

- Croce A, Stinca A, Santangelo A, Esposito A (2019) Exploring vascular flora biodiversity of two protected sandy coastal areas in southern Italy. *Rendiconti Lincei* 30(2): 323–336. <https://doi.org/10.1007/s12210-019-00789-6>
- Del Guacchio E (2007) Aggiornamenti floristici per la Campania. *Informatore Botanico Italiano* 39(2): 357–364.
- Del Guacchio E (2010) Appunti di floristica campana: novità e precisazioni. *Informatore Botanico Italiano* 42(1): 35–46.
- Domina G, Marino P, Castellano G, Amato F, Cambria S, Cancellieri L, Crisafulli A, Cristaudo A, Faraoni F, Galesi R, Guarino R, Lattanzi E, Lavezzo P, Longo D, Maiorca G, Peccenini S, Perrino E, Salerno G, Scolastri A, Soldano A, Stinca A, Wagensommer R, Xibilia L, Raimondo F (2015) Contributo alla conoscenza floristica dei monti Sicani (Sicilia): resoconto dell'escursione del Gruppo di Floristica (S.B.I.) nel 2012. *Informatore Botanico Italiano* 47(2): 155–177.
- Ferraris T (1900) La *Cochlearia glastifolia* Linn. nella flora avellinese. *Bullettino della Società Botanica Italiana* 1900(1–2): 44–46.
- Ferraris T (1906) Nuove aggiunte alla Flora Avellinese. *Nuovo Giornale Botanico Italiano* n.s. 13(1): 59–78.
- Frate L, Carranza ML, Evangelista A, Stinca A, Schaminée JHJ, Stanisci A (2018) Climate and land use change impacts on Mediterranean high-mountain vegetation in the Apennines since the 1950s. *Plant Ecology & Diversity* 11(1): 85–96. <https://doi.org/10.1080/17550874.2018.1473521>
- Galasso G, Conti F, Peruzzi L, Ardenghi NMG, Banfi E, Celesti-Grapow L, Albano A, Alessandrini A, Bacchetta G, Ballelli S, Bandini Mazzanti M, Barberis G, Bernardo L, Blasi C, Bouvet D, Bovio M, Cecchi L, Del Guacchio E, Domina G, Fascetti S, Gallo L, Gubellini L, Guiggi A, Iamónico D, Iberite M, Jiménez-Mejías P, Lattanzi E, Marchetti D, Martinetto E, Masin RR, Medagli P, Passalacqua NG, Peccenini S, Pennesi R, Pierini B, Podda L, Poldini L, Prosser F, Raimondo FM, Roma-Marzio F, Rosati L, Santangelo A, Scoppola A, Scortegagna S, Selvaggi A, Selvi F, Soldano A, Stinca A, Wagensommer RP, Wilhalm T, Bartolucci F (2018a) An updated checklist of the vascular flora alien to Italy. *Plant Biosystems* 152(3): 556–592. <https://doi.org/10.1080/11263504.2018.1441197>
- Galasso G, Domina G, Adorni M, Ardenghi NMG, Bonari G, Buono S, Cancellieri L, Chiavese G, Ferretti G, Fiaschi T, Forte L, Guarino R, Labadessa R, Lastrucci L, Lazzaro L, Magrini S, Minuto L, Mossini S, Olivieri N, Scoppola A, Stinca A, Turcato C, Nepi C (2018b) Notulae to the Italian alien vascular flora: 5. *Italian Botanist* 5: 45–56. <https://doi.org/10.3897/italianbotanist.5.25910>
- Galasso G, Domina G, Alessandrini A, Ardenghi NMG, Bacchetta G, Ballelli S, Bartolucci F, Brundu G, Buono S, Busnardo G, Calvia G, Capece P, D'Antraccoli M, Di Nuzzo L, Fanfarillo E, Ferretti G, Guarino R, Iamónico D, Iberite M, Latini M, Lazzaro L, Lonati M, Lozano V, Magrini S, Mei G, Mereu G, Moro A, Mugnai M, Nicoletta G, Nimis PL, Olivieri H, Pennesi R, Peruzzi L, Podda L, Probo M, Prosser F, Ravetto Enri S, Roma-Marzio F, Ruggero A, Scafidi F, Stinca A, Nepi C (2018c) Notulae to the Italian alien vascular flora: 6. *Italian Botanist* 6: 65–90. <https://doi.org/10.3897/italianbotanist.6.30560>

- Galasso G, Domina G, Ardenghi NMG, Aristarchi C, Bacchetta G, Bartolucci F, Bonari G, Bouvet D, Brundu G, Buono S, Caldarella O, Calvia G, Cano-Ortiz A, Corti E, D'Amico FS, D'Antraccoli M, Di Turi A, Dutto M, Fanfarillo E, Ferretti G, Fiaschi T, Ganz C, Guarino R, Iberite M, Laface VLA, La Rosa A, Lastrucci L, Latini M, Lazzaro L, Lonati M, Lozano V, Luchino F, Magrini S, Mainetti A, Manca M, Mugnai M, Musarella CM, Nicoletta G, Olivieri N, Orrù I, Paziienza G, Peruzzi L, Podda L, Prosser F, Ravetto Enri S, Restivo S, Roma-Marzio F, Ruggero A, Scoppola A, Selvi F, Spampinato G, Stinca A, Terzi M, Tiburtini M, Tornatore E, Vetromile R, Nepi C (2019) Notulae to the Italian alien vascular flora: 7. Italian Botanist 7: 157–182. <https://doi.org/10.3897/italianbotanist.7.36386>
- Jeanmonod D (1984) Révision de la section Siphonomorpha Otth du genre *Silene* L. (Caryophyllaceae) en Méditerranée occidentale. III: Agrégat italica et espèces affines. *Candollea* 39: 549–639.
- Motti R, Esposito A, Stinca A (2018) New additions to the exotic vascular flora of Campania (southern Italy). *Annali di Botanica* 8: 75–85. doi: 10.4462/annbotrm-14156
- Nardi E (2017) Aquilegia. In: Euro+Med Plantbase – the information resource for Euro-Mediterranean plant diversity. <http://ww2.bgbm.org/EuroPlusMed/PTaxonDetail.asp?NameCache=Aquilegia&PTRefFk=7500000> [accessed 25.05.2019]
- Nicoletta G, Antonelli A, Bamonte R, Bececco I, Carbini D, De Santis E, Faggi G, Maggioni L, Molinaro F, Sesto F, Ardenghi NMG (2017) Rassegna di segnalazioni notevoli riguardanti il Friuli-Venezia Giulia comparse nel forum Acta Plantarum. *Acta Plantarum Notes* 5: 56–60.
- Orsenigo S, Montagnani C, Fenu G, Gargano D, Peruzzi L, Abeli T, Alessandrini A, Bacchetta G, Bartolucci F, Bovio M, Brullo C, Brullo S, Carta A, Castello M, Cogoni D, Conti F, Domina G, Foggi B, Gennai M, Gigante D, Iberite M, Lasen C, Magrini S, Perrino EV, Prosser F, Santangelo A, Selvaggi A, Stinca A, Vagge I, Villani MC, Wagensommer RP, Wilhelm T, Tartaglino N, Duprè E, Blasi C, Rossi G (2018) Red Listing plants under full national responsibility: extinction risks and threats in the vascular flora endemic to Italy. *Biological Conservation* 224: 213–222. <https://doi.org/10.1016/j.biocon.2018.05.030>
- Peccenini S, Barberis G, Bartolucci F, Cancellieri L, Conti F, Costalonga S, Dente F, Iocchi M, Lattanzi E, Lavezzo P, Lupino F, Magrini S, Salerno G, Tardella FM, Terzo V, Tinti D, Zappa E (2010) Contributo alla conoscenza floristica della Liguria: resoconto dell'escursione del Gruppo di Floristica nel 2006 sulle Alpi Liguri meridionali. *Informatore Botanico Italiano* 42(1): 3–25.
- Peccenini S, Bartolucci F, Bernardo L, Cancellieri L, Conti F, Costalonga S, Del Vico E, De Mattei R, Di Turi A, Iocchi M, Lattanzi E, Lavezzo P, Lupino E, Magrini S, Salerno G, Scoppola A, Tilia A, Tinti D (2007) Contributo alla conoscenza floristica della Liguria: resoconto dell'escursione del Gruppo di Floristica nel 2005 sull'Appennino Ligure orientale. *Informatore Botanico Italiano* 39(2): 281–306.
- Peruzzi L, Barbo M, Bartolucci F, Bovio M, Carta A, Ciccarelli D, Conti F, Costalonga S, Di Pietro R, Galasso G, Gestri G, Lattanzi E, Lavezzo P, Marsili S, Peccenini S, Pierini B, Tardella FM, Terzo V, Turrisi RE, Bedini G (2011) Contributo alla conoscenza floristica delle Colline Pisane: resoconto dell'escursione del Gruppo di Floristica (S.B.I.) nel 2009. *Informatore Botanico Italiano* 43(1): 3–27.

- Peruzzi L, Conti F, Bartolucci F (2014) An inventory of vascular plants endemic to Italy. *Phytotaxa* 168(1): 1–75. <https://doi.org/10.11646/phytotaxa.168.1.1>
- Peruzzi L, Domina G, Bartolucci F, Galasso G, Peccenini S, Raimondo FM, Albano A, Alessandrini A, Banfi E, Barberis G, Bernardo L, Bovio M, Brullo S, Brundu G, Brunu A, Camarda I, Conti F, Croce A, Iamónico D, Iberite M, Iiriti G, Longo D, Manca A, Marsili S, Medagli P, Pistarino A, Salmeri C, Santangelo A, Scassellati E, Selvi F, Soldano A, Stinca A, Vacca G, Villani MC, Wagensommer RP, Passalacqua NG (2015) An inventory of the names of vascular plants endemic to Italy, their loci classici and types. *Phytotaxa* 196(1): 1–217. <https://doi.org/10.11646/phytotaxa.196.1.1>
- Pignatti S (1982) *Flora d'Italia*, Vols. 1–3. Edagricole, Bologna.
- Pignatti S, Guarino R, La Rosa M (2017a) *Flora d'Italia*, Vol. 1. Edagricole, Bologna, 1064 pp.
- Pignatti S, Guarino R, La Rosa M (2017b) *Flora d'Italia*, Vol. 2. Edagricole, Bologna, 1178 pp.
- Pignatti S, Guarino R, La Rosa M (2018) *Flora d'Italia*, Vol. 3. Edagricole, Bologna, 1288 pp.
- Pignatti S, Guarino R, La Rosa M (2019) *Flora d'Italia*, Vol. 4. Edagricole, Bologna, 1054 pp.
- Rivas-Martínez S, Penas Á, Díaz TE (2004) Bioclimatic & biogeographic maps of Europe. <http://www.globalbioclimatics.org/form/maps.htm> [accessed 10.06.2019]
- Rosati L, Coppi A, Farris E, Fascetti S, Becca G, Peregrym M, Tan K, Selvi F (in press) The genus *Gymnospermium* (Berberidaceae) in Italy: identity and relationships of the populations at the western limit of the genus range. *Plant Biosystems*.
- Rosati L, Romano VA, Bartolucci F, Bernardo L, Bouvet D, Cancellieri L, Caruso G, Conti F, Faraoni F, Banfi E, Galasso G, Lattanzi E, Lavezzo P, Peccenini S, Perrino EV, Salerno G, Sciandra A, Soldano A, Stinca A, Totta C, Fascetti S (2017) Contribution to the floristic knowledge of the Maddalena Mountains (Basilicata and Campania, southern Italy). *Italian Botanist* 3: 73–82. <https://doi.org/10.3897/italianbotanist.3.12519>
- Rosati L, Salerno G, Del Vico E, La Penna MR, Villani MC, Filesi L, Fascetti S, Lattanzi E (2012) Un aggiornamento alla flora del Cilento e della Campania. *Informatore Botanico Italiano* 44(1): 111–119.
- Rossi G, Montagnani C, Gargano D, Peruzzi L, Abeli T, Ravera S, Cogoni A, Fenu G, Magrini S, Gennai M, Foggi B, Wagensommer RP, Venturella G, Blasi C, Raimondo FM, Orsenigo S (2013) Lista Rossa della Flora Italiana. 1. Policy Species e altre specie minacciate. Comitato Italiano IUCN e Ministero dell'Ambiente e della Tutela del Territorio e del Mare, Roma, 58 pp.
- Salerno G, Stinca A (2017) First European record of *Solandra maxima* (Sessé & Moc.) P.S.Green (Solanaceae). *Annali di Botanica* 7: 67–70. doi: 10.4462/annbotrm-13848
- Santangelo A, Bernardo L, Bertani G, Bronzo E, Cancellieri L, Costalonga S, Croce A, Del Vico E, Fascetti S, Fortini P, Gangale C, Gubellini L, Iocchi M, Lapenna MR, Lattanzi E, Lavezzo P, Lupino F, Magrini S, Marino R, Paura B, Peccenini S, Peruzzi L, Rosati L, Salerno G, Scoppola A, Strumia S, Tardella FM, Uzunov D (2010) Contributo alla conoscenza floristica del Massiccio del Matese: resoconto dell'escursione del Gruppo di Floristica (S.B.I.) nel 2007. *Informatore Botanico Italiano* 42(1): 109–143.
- Schiattarella M, Giannandrea P, Principe C, La Volpe L (2016) Note illustrative della Carta Geologica d'Italia alla scala 1:50.000. Foglio 451 Melfi. ISPRA, Roma, 125 pp.
- Scoppola A, Blasi C (Eds) (2005) *Stato delle conoscenze sulla flora vascolare d'Italia*. Palombi Editori, Roma, 253 pp.

- Scoppola A, Lattanzi E, Bernardo L (2016) Distribution and taxonomy of the Italian clovers belonging to *Trifolium* sect. *Vesicastrum* subsect. *Mystillus* (Fabaceae). Italian Botanist 2: 7–27. <https://doi.org/10.3897/italianbotanist.2.10361>
- Spicciarelli R (2013) La Riserva Naturale Orientata di Grotticelle. 1963–2013. 50 anni dalla scoperta della Bramea. Ufficio Territoriale per la Biodiversità di Potenza, Corpo Forestale dello Stato, Potenza, 157 pp.
- Stinca A (2017) *Orchis italica* Poir. (Orchidaceae): rediscovery after four centuries of a presumably extinct species in Mt. Vesuvius, Italy. Annali di Botanica 7: 71–74. <https://doi.org/10.4462/annbotrm-13294>
- Stinca A (2019) The genus *Vitis* L. (Vitaceae) in Campania (Southern Italy), with emphasis on alien units. Annali di Botanica 9: 107–112. <https://doi.org/10.13133/2239-3129/14792>
- Stinca A, Chianese G, D’Auria G, Del Guacchio E, Fascetti S, Perrino EV, Rosati L, Salerno G, Santangelo A (2017a) New alien vascular species for the flora of southern Italy. Webbia 72(2): 295–301. <https://doi.org/10.1080/00837792.2017.1349236>
- Stinca A, Conti F, Bartolucci F (2019a) Typification of the name *Centaurea deusta* Ten. (Asteraceae). Phytotaxa 399(4): 296–299. <https://doi.org/10.11646/phytotaxa.399.4.6>
- Stinca A, Croce A, D’Auria G, Salerno G, Santangelo A, Rosati L, Motti R (2016) Nuovi dati sulla flora vascolare aliena della Campania (Sud Italia). Atti della Società Toscana di Scienze Naturali, Memorie Serie B, 122 [2015]: 89–110. <https://doi.org/10.2424/ASTSN.M.2015.09>
- Stinca A, D’Auria G, Motti R (2014) *Manihot esculenta* (Euphorbiaceae), a new alien species in Italy. Hacquetia 13(2): 355–357. <https://doi.org/10.2478/hacq-2014-0011>
- Stinca A, Motti R (2013) Aggiornamenti floristici per il Somma-Vesuvio e l’Isola di Capri (Campania, Sud Italia). Informatore Botanico Italiano 45(1): 35–43.
- Stinca A, Mei G (in press) *Ehrharta erecta* (Poaceae, Ehrhartoideae): distribution in Italy and taxonomy of one of the most invasive plant species in the world. BioInvasions Records.
- Stinca A, Ravo M, Giacanelli V, Conti F (2017b) Integrazioni alla flora vascolare dell’Isola di Capri (Campania, Sud Italia). Atti della Società Toscana di Scienze Naturali, Memorie Serie B, 123 (2016): 41–64. <https://doi.org/10.2424/ASTSN.M.2016.05>
- Stinca A, Ravo M, Giacanelli V, Conti F (2019b) Additions to the vascular flora of the islands of Procida and Vivara (Campania, southern Italy). Atti della Società Toscana di Scienze Naturali, Memorie Serie B, 125 [2018]: 87–93. <https://doi.org/10.2424/ASTSN.M.2018.14>
- Thiers B (2019) Index Herbariorum: a global directory of public herbaria and associated staff. New York Botanical Garden’s Virtual Herbarium. <http://sweetgum.nybg.org/ih/> [accessed 25.05.2019]
- Trotter A (1905a) Osservazioni ed aggiunte alla flora irpina. Nota prima. Bullettino della Società Botanica Italiana 1905(1–2): 20–29.
- Trotter A (1905b) Osservazioni ed aggiunte alla flora irpina. Nota seconda. Bullettino della Società Botanica Italiana 1905(1–2): 32–42.
- Trotter A (1906a) Nuove osservazioni ed aggiunte alla flora irpina. Nota terza. Bullettino della Società Botanica Italiana 1906(1–2): 9–24.
- Trotter A (1906b) Nuova serie di osservazioni e ricerche sulla flora irpina. Malpighia 20(8–9): 305–320.

- Trotter A (1908) Ulteriori osservazioni e ricerche sulla flora irpina. *Malpighia* 22(1–2): 64–78.
- Trotter A (1909) Nuove osservazioni e ricerche sulla flora irpina. *Malpighia* 23(10–12): 425–446.
- Trotter A (1910) Sulla presenza in Italia di *Euphorbia cernua* Coss. et Dur. *Nuovo Giornale Botanico Italiano* n.s. 17(2): 218–222.
- Trotter A (1913) Della particolare costituzione di alcuni boschi nell'Appennino avellinese e della presenza di *Staphylea pinnata* L. ed *Evonymus latifolius* Mill. *Nuovo Giornale Botanico Italiano* n.s. 20(2): 265–274.
- Tutin TG, Heywood VH, Burges NA, Moore DM, Valentine DH, Walters SM, Webb DA (Eds) (1968) *Flora Europaea*, Vol. 2. Cambridge University Press, Cambridge, 465 pp.
- Tutin TG, Heywood VH, Burges NA, Moore DM, Valentine DH, Walters SM, Webb DA (Eds) (1972) *Flora Europaea*, Vol. 3. Cambridge University Press, Cambridge, 381 pp. <https://doi.org/10.2307/1218149>
- Tutin TG, Heywood VH, Burges NA, Moore DM, Valentine DH, Walters SM, Webb DA (Eds) (1976) *Flora Europaea*, Vol. 4. Cambridge University Press, Cambridge, 515 pp.
- Tutin TG, Heywood VH, Burges NA, Moore DM, Valentine DH, Walters SM, Webb DA (Eds) (1980) *Flora Europaea*, Vol. 5. Cambridge University Press, Cambridge, 463 pp.
- Tutin TG, Burges NA, Chater AO, Edmondson JR, Heywood VH, Moore DM, Valentine DH, Walters SM, Webb DA (Eds) (1993) *Flora Europaea*, Vol. 1. Second edition. Cambridge University Press, Cambridge, 581 pp.
- Visconti D, Fiorentino N, Stinca A, Di Mola I, Fagnano M (2018) Use of the native vascular flora for risk assessment and management of an industrial contaminated soil. *Italian Journal of Agronomy* 13(suppl. 1): 23–33. <https://doi.org/10.4081/ija.2018.1348>
- Wagensommer Rp, Marrese M, Perrino Ev, Bartolucci F, Cancellieri L, Carruggio F, Conti F, Di Pietro R, Fortini P, Galasso G, Lattanzi E, Lavezzo P, Longo D, Peccenini S, Rosati L, Russo G, Salerno G, Scoppola A, Soldano A, Stinca A, Tilia A, Turco A, Medagli P, Forte L (2014) Contributo alla conoscenza floristica della Puglia: resoconto dell'escursione del Gruppo di Floristica (S.B.I.) nel 2011 nel settore meridionale dei Monti della Daunia. *Informatore Botanico Italiano* 46(2): 175–208.
- Whittemore AT (1997) *Aquilegia* Linnaeus. In: *Flora of North America North of Mexico*, Vol. 3. New York and Oxford University Press, New York and Oxford. http://www.efloras.org/florataxon.aspx?flora_id=1&taxon_id=102388 [accessed 10.05.2019]

Supplementary material I

Supplementary figures and tables 1–8

Authors: Stinca Adriano, Chianese Giuseppina, D’Auria Giuseppe, Fascetti Simonetta, Ravo Maria, Romano Vito Antonio, Salerno Giovanni, Astuti Giovanni, Bartolucci Fabrizio, Bernardo Liliana, Bonari Gianmaria, Bouvet Daniela, Cancellieri Laura, Carli Emanuela, Caruso Giuseppe, Catalano Immacolata, Cennamo Gennaro Domenico, Ciaschetti Giampiero, Conti Fabio, Di Pietro Romeo, Fortini Paola, Gangale Carmen, Lapenna Maria Rita, Lattanzi Edda, Marcucci Rossella, Peccenini Simonetta, Pennesi Riccardo, Perrino Enrico Vito, Peruzzi Lorenzo, Roma-Marzio Francesco, Scoppola Anna, Tilia Agnese, Villani Mariacristina, Rosati Leonardo

Data type: species data

Explanation note: **Figure S1**. Thermo-pluviometric diagram of the representative station of Monticchio Bagni. **Table S2**. List of the sampling sites and relative details. **Figure S3(1–8)**. Topographic maps of sampling. **Figure S4**. Botanists participating at the field survey in eastern Irpinia and Vulture-Melfese area. **Figure S5**. Playbills of the two workshops held in 2016 in Portici (Library of Agriculture and Department of Agricultural Sciences of the University of Naples Federico II) and Barisciano (Apennine Floristic Research Center) to revise the critical samples collected during the field survey in eastern Irpinia and Vulture-Melfese area. **Table S6_1**. Public herbaria in which the collected exsiccata are kept. **Table S6_2**. Private herbaria in which the collected exsiccata are kept. **Table S7**. Floristic list of taxa surveyed in the eastern Irpinia and Vulture-Melfese area with the number of sampling sites in bold. **Figure S8**. Orchids recorded in the eastern Irpinia and Vulture-Melfese area only by digital photographs.

Copyright notice: This dataset is made available under the Open Database License (<http://opendatacommons.org/licenses/odbl/1.0/>). The Open Database License (ODbL) is a license agreement intended to allow users to freely share, modify, and use this Dataset while maintaining this same freedom for others, provided that the original source and author(s) are credited.

Link: <https://doi.org/10.3897/italianbotanist.8.37818.suppl1>