



First record of *Stylostomum ellipse* (Dalyell, 1853) (Platyhelminthes, Polycladida) from the Pacific Ocean

Aoi Tsuyuki¹, Yuki Oya¹, Hiroshi Kajihara²

1 Graduate School of Science, Hokkaido University, Sapporo, Hokkaido 060-0810, Japan. **2** Faculty of Science, Hokkaido University, Sapporo, Hokkaido 060-0810, Japan.

Corresponding author: Aoi Tsuyuki, tykamps0430@gmail.com

Abstract

The polyclad flatworm *Stylostomum ellipse* (Dalyell, 1853) has hitherto been recorded from the Antarctic region, Mediterranean Sea, Patagonian region, Scandinavia, South Africa, and South Georgia Island. In this study, we report *S. ellipse* for the first time from the Pacific Ocean based on specimens collected in Hokkaido, northern Japan. Our specimens are morphologically identifiable as *S. ellipse*, but may represent a biologically different species from a population of the Mediterranean Sea. This is because, based on the previous genetic data of other cotylean species, the observed uncorrected *p*-distance 0.02160 between the two distinct populations in terms of a partial 972 bp region of the 28S rDNA sequence may be great enough to separate the species biologically.

Keywords

Cosmopolitan species, Euryleptidae, genetic distance, marine invertebrates, taxonomy.

Academic editor: Natalia Luchetti | Received 2 March 2020 | Accepted 3 June 2020 | Published 26 June 2020

Citation: Tsuyuki A, Oya Y, Kajihara H (2020) First record of *Stylostomum ellipse* (Dalyell, 1853) (Platyhelminthes, Polycladida) from the Pacific Ocean. Check List 16 (3): 773–779. <https://doi.org/10.15560/16.3.773>

Introduction

The euryleptid flatworm genus *Stylostomum* Lang, 1884 sensu Holleman (2001) is characterized by the oval body shape and the small to moderate size; the mouth and the male gonopore in common opening to the exterior; and the tentacles reduced to small stumps or lacked. *Stylostomum* consists of nine valid species: *S. ellipse* (Dalyell, 1853); *S. felinum* Marcus, 1954; *S. frigidum* Bock, 1931; *S. hozawai* Kato, 1939; *S. lentum* Heath & McGregor, 1912; *S. maculatum* Kato, 1944; *S. mixtomaculatum* Pitale & Apte, 2019; *S. sanjuania* Holleman, 1972; and *S. spanis* Holleman, 2001. All are distributed in the boreal and temperate realms north of latitude 36°N and south of latitude 36°S (Holleman 2001), except *S.*

mixtomaculatum, recorded from the west coast of India (Pitale and Apte 2019).

Stylostomum ellipse is known to have the most discontinuous distribution among the polyclads (Prudhoe 1985). This species has been recorded in both the north-eastern and southern parts of the Atlantic: Scandinavia to Mediterranean Sea, South Africa, the Patagonian region, South Georgia Island, and the Antarctic region (Fig. 1A). In this paper, we present the first record of *S. ellipse* from the Pacific Ocean.

Methods

Eight polyclad specimens were collected subtidally by dredging in the Pacific coast of Hokkaido, northern

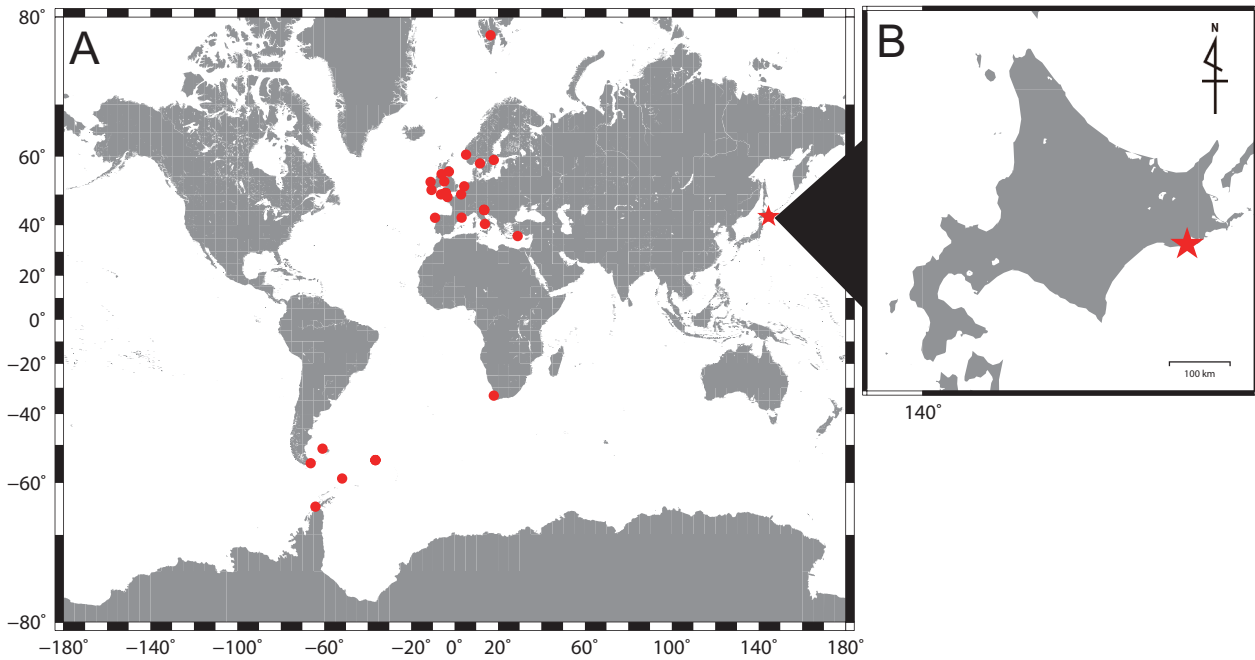


Figure 1. Distribution of *Stylostomum ellipse*. Stars indicate the new record from Hokkaido, northern Japan. Circles indicate the previously known records around the Atlantic Ocean. **A.** Updated distribution map. **B.** Magnification of Hokkaido, showing the sampling site of this study.

Japan (Fig. 1B). Morphological preparation and molecular methods are mostly in accordance with those in Tsuyuki et al. (2019). Worms were anesthetized in a $MgCl_2$ solution prepared with tap water so that it had the same refractive index (or “salinity”) as the seawater, using an IS/Mill-E refractometer (AS ONE, Japan), and then photographed with a Nikon D5300 digital camera with external strobe lightning provided by a pair of Morris Hikaru Komachi Di flash units. For DNA extraction, a posterior fragment of the body was removed and stored in 99.5% ethanol. The rest of the body was fixed in Bouin’s solution for 24 h and preserved in 70% ethanol for long term storage.

For histological examination, tissues were dehydrated in an ethanol series, cleared in xylene, embedded in paraffin wax, and sectioned at a thickness of 7 μm using a microtome. Sections were stained with hematoxylin and eosin, mounted on glass slides in Entellan New (Merck, Germany), and then observed and photographed under an Olympus BX51 compound microscope. All vouchers are deposited in the Invertebrate Collection of the Hokkaido University Museum (ICHUM), Sapporo, Japan.

Total DNA of six specimens was extracted using a silica-based method (Boom et al. 1990) after specimens were homogenized. A 979-bp fragment of the 28S rDNA was amplified with the primer pair fw1 and rev2 (Sonnenberg et al. 2007). Polymerase chain reaction (PCR) amplification conditions were: 94 °C for 30 s, 52.5 °C for 30 s, and 72 °C for 2 min; for 35 cycles in PCR amplification. All nucleotide sequences were determined by direct sequencing with a BigDye Terminator Kit ver. 3.1 and ABI 3730 Genetic Analyzer (Life Technologies, California, USA); and two internal primers, fw2 and rev4 (Sonnenberg et al. 2007), were used in addition

to fw1 and rev2. Sequences were checked and edited by using MEGA ver. 7.0 (Kumar et al. 2016). The edited sequences are deposited in DDBJ/EMBL/GenBank. The 28S rDNA uncorrected *p*-distance was calculated using MEGA ver. 7.0 (Kumar et al. 2016).

All graphical treatments were done with Adobe Photoshop CC 2019. Illustrations were prepared with Adobe Illustrator CC 2019.

Results

Family Euryleptidae

Genus *Stylostomum* Lang, 1884

Stylostomum ellipse (Dalyell, 1853)

Figures 2–4

Planaria ellipsis Dalyell 1853: 101–102, pl. 14, figs 9–16 (Scotland).

Polycelis ellipsis—Leuckart (1859: 183).

Leptoplana ellipsis—Diesing (1862: 542), Johnston (1865: 7), McIntosh (1874: 150), McIntosh (1875: 107).

Stylochus roseus Sars in Jensen 1878: 75, pl. 8, figs 1–3 (Norway).

Stylostomum ellipse—Lang (1884: 588), Gamble (1893a: 511), Bock (1913: 270–273; Koster, Sweden; Spitzbergen, Norway; Falkland Islands; Tierra del Fuego; South Africa), Steinböck (1932: 334, 337), Steinböck (1933: 20; Croatia), Bresslau (1928–1933: 241, fig. 240), Stummer-Traunfels (1933: 3575, fig. 154), Westblad (1952: 9–10; Falkland Islands; South Georgia; Tierra del Fuego), Crothers (1966: 22; Wales), Laverack and Blackler (1974: 32), Hendelberg (1974: 15, 17, figs 22–24; Sweden); Galleni and Puccinelli (1981: 42; Britain); Prudhoe (1982: 68–69, figs 24A, B; Scotland), Faubel (1984: 223), Prudhoe (1985: 141), Holleman (2001: 227–229), Faubel and Warwick (2005: 23–25, fig 6; off the Day Mark), Faasse and Ligthart (2007: 44–46, figs 1, 2; Netherlands); Cinar (2014: 707, 718; Turkey), Noreña et al. (2014: 18, fig 7C; Iberian Peninsula), Dittmann et al. (2019: 588, table 1; Croatia).

Stylostomum roseum—Lang (1884: 589), Bock (1913: 270).

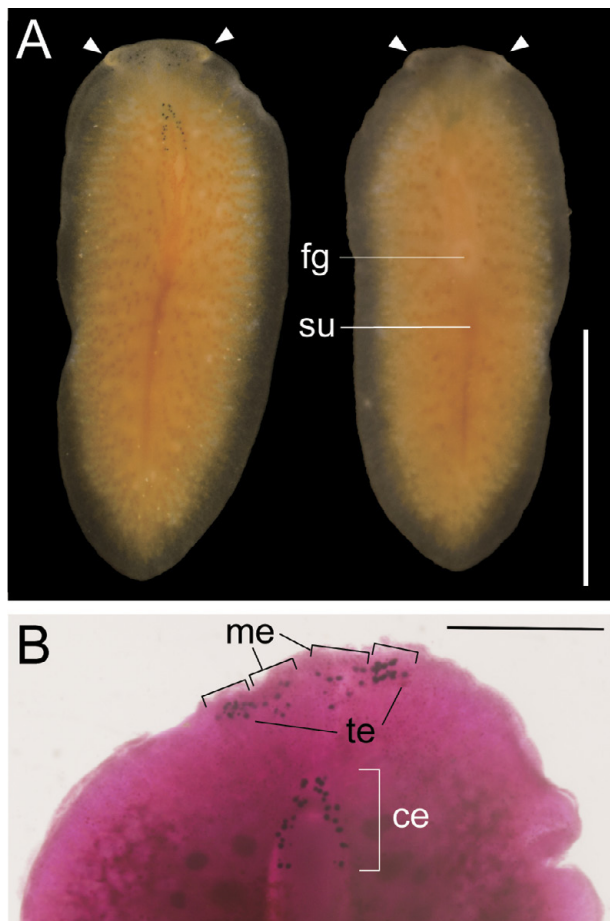


Figure 2. *Stylostomum ellipse*, ICHUM 6003, from Japan. **A.** Entire animal in anesthetized living state, dorsal (left) and ventral (right) views; marginal tentacles indicated by arrowheads. **B.** Magnification of the same body in fixed state after being cleared in xylene; dorsal view, showing position and arrangement of cerebral and marginal eyespots. Abbreviations: ce, cerebral eyespots; fg, female gonopore; me, marginal eyespots; su, sucker; te, tentacular eyespots. Scale bars: 5 mm (A); 1 mm (B).

Stylostomum variabile Lang 1884: 73, 585–588, pl. 8, figs 3, 4, 6, pl. 30, fig. 14, pl. 36, fig. 22 (Gulf of Naples); Carus (1885: 157), Lo Bianco (1888: 400); Vaillant (1889: 656; France), Bergendal (1890: 327; Sweden); Gamble (1893a: 511–513, pl. XXXIX, fig. 1; Isle of Man), Gamble (1893b: 47; England), Gamble (1893c: 171, pl. XIV, figs 43–46; Isle of Man), Hallez (1893: 178–180, pl. 3, fig. 9, pl. 4, figs 9–11), Hallez (1894: 230–233, pl. 2, figs 9–11), Plehn (1896: 172; Patagonia), Browne et al. (1898: 813; Ireland), Micoletzky (1910: 180; Trieste), Bock (1913: 270), Southern in Farran (1915: 36; Ireland), Southern (1936: 72; Ireland), Bassindale and Barrett (1957: 251; Stockholm), Eales (1961: 51).

Stylostomum sanguineum Hallez 1893: 180, 197, pl. 3, fig. 10, pl. 4, figs 12–14 (southern France); Hallez (1894: 233–235, pl. 2, figs 12–14; France), Bock (1913: 270, 273).

?*Stylostomum antarcticum* Hallez 1905: 126 (Antarctica); Hallez (1907: 10–11, pl. 1, fig. 6, pl. 2, fig. 5, 6).

?*Stylostomum punctatum* Hallez 1905: 126–127 (Antarctica); Hallez (1907: 10, pl. 2, fig. 1–4).

Material examined. JAPAN • 8 specimens; Hokkaido, Akkeshi Bay, Nakanose, Research and Training Vessel *Misago-maru* (Akkeshi Marine Station, Hokkaido University); 43°00.36'N, 144°46.86'E; depth 6.4–8.4 m; 25 June 2017; Y. Oya leg.; ICHUM 6000. • 3 specimens; same data as above, except 28 June 2018; ICHUM

6001–6003. • 4 specimens; same data as above, except 20 June 2019; ICHUM 6004–6007.

Identification. Body oval, 4.0–12.3 mm in length, 1.8–5.8 mm in maximum width in living state. Marginal tentacles rudimentary. Dorsal surface smooth, translucent, variably colored (white, orange, or red) depending on gut contents (Figs 2A, 3A–C). Body margin transparent. Intestine highly branched, spreading all over body; median intestinal branches absent in front of pharyngeal pouch. Pair of cerebral-eyespot clusters extending from brain to middle portion of pharyngeal pouch; each cluster consisting of 4–22 eyespots; two large cerebral eyespots, closely set to each other, located at anterior-most region in each cluster (Fig. 2B); additional, single, small cerebral eyespot embedded in parenchyma located closely anterior to large cerebral eyespot on each side (Fig. 3D, indicated by arrowheads), only found in ICHUM 6001, 6003–6006 (Fig. 3A, B). Marginal and tentacular eyespots spreading around two marginal tentacles (Fig. 2B). Ventral eyespots absent. Plicated pharynx tubular in shape. Male atrium and mouth sharing common pore, opening in front of pharynx (Fig. 4A, B). Male copulatory apparatus consisting of large seminal vesicle, spherical prostatic vesicle, and armed penis papilla, located under pharynx (Fig. 4C). Spermiducal vesicles well developed, forming single row on each side of midline, separately entering into seminal vesicle. Seminal vesicle oval, coated with thick muscular wall. Prostatic vesicle half as large as seminal vesicle, former situated above latter (Fig. 4A, C). Penis papilla armed with pointed tubular stylet, enclosed in penis pouch, protruding into male atrium. Female reproductive system posterior to pharynx. Female gonopore and sucker situated posterior to the male atrium–mouth common pore (Fig. 4A, D, E). Uterus bending directly downward, splitting into left and right immediately behind cement pouch (Fig. 4D). Uterine vesicle developed when containing eggs. Cement glands numerous, concentrated around vagina and releasing their contents into cement pouch.

Sequences. Partial 28S rDNA sequences (979 bp) from four individuals: LC508269 from ICHUM 6002; LC508270 from ICHUM 6003; LC508271 from ICHUM 6004; and LC508272 from ICHUM 6006. All were completely identical.

Genetic distance. In terms of partial 28S rDNA sequences, the uncorrected *p*-distance between the overlapping 972 bp of LC508269–508272 (979 bp) from Japan, and GenBank MN384704 (1395 bp) from Punat, Adriatic Sea (Dittmann et al. 2019), was 0.02160.

Remarks. The following morphological characteristics observed in our specimens correspond to the diagnostic characteristics of *S. ellipse* provided by previous researchers (Lang 1884; Bock 1913; Marcus 1954): a pair of two large cerebral eyespots anterior to smaller ones in each cerebral-eyespot cluster, and seminal vesicle twice as large as the prostatic vesicle.

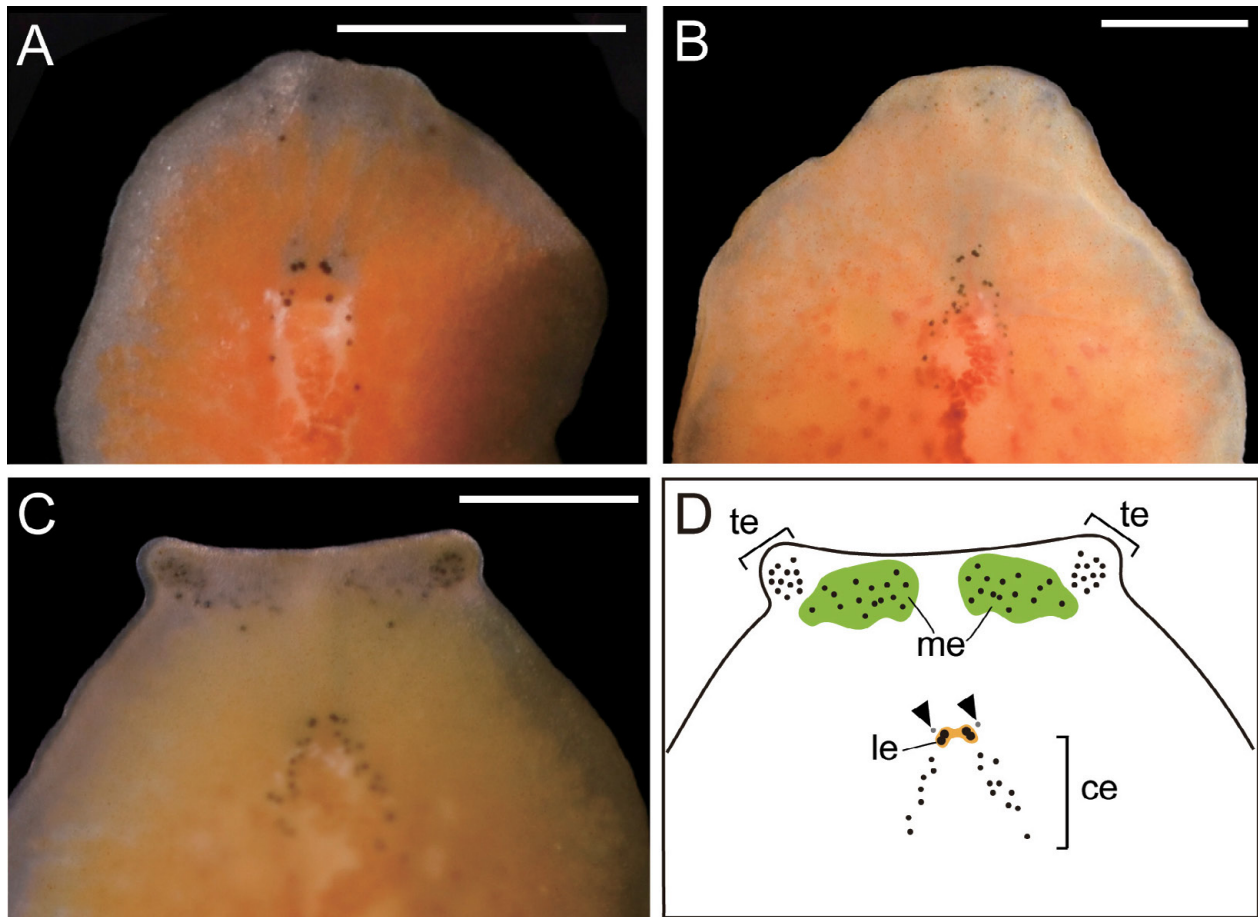


Figure 3. *Stylostomum ellipse*, variations of the arrangement of eyespots. **A.** ICHUM 6006. **B.** ICHUM 6001. **C.** ICHUM 6007. **D.** Distribution of eyespots, showing positions of small cerebral eyespots embedded in parenchyma (indicated by arrowheads). Abbreviations: ce, cerebral eyespots; le, pair of two large cerebral eyespots; me, marginal eyespots; te, tentacular eyespots. Scale bars: 500 μ m (**A–C**).

Stylostomum ellipse has potentially five subjective synonyms (type locality in parentheses): *S. antarcticum* (Antarctica), *S. punctatum* (Antarctica), *S. roseus* (Norway), *S. sanguineum* (southern France), and *S. variabile* (Italy). Lang (1884) suggested that the slight morphological differences observed in the arrangement of the eyespots of *S. ellipse*, *S. roseum*, and *S. variabile* possibly represent a variation within a single species. Bock (1913) synonymized *S. roseum* and *S. variabile* with *S. ellipse* based on specimens collected in Sweden, Norway, South America, and South Africa. Bock (1913) also remarked that both *S. punctatum*, considered identical to *S. antarcticum*, and *S. sanguineum* possibly represent local varieties of *S. ellipse*. Likewise, Faubel (1984) considered *S. roseum*, *S. sanguineum*, and *S. variabile* as synonyms of *S. ellipse*, and uncertainly included *S. antarcticum* and *S. punctatum* in this species synonymy.

Discussion

This study represents the first record of *Stylostomum ellipse* from the Pacific Ocean. This species shows a cosmopolitan distribution, so far recorded from the Atlantic coasts of Europe (including the Mediterranean Sea), South America, South Africa, and the Antarctic Sea (Fig. 1A). Our new findings of *S. ellipse* from the Pacific

coast of northern Japan (Fig. 1A), considered as a sub boreal zone, is in agreement with the known distribution of the species, mostly recorded from cold-temperate provinces (Holleman 2001).

While our specimens are morphologically identifiable as *S. ellipse*, there remains a possibility that this species represents two or more cryptic species, as our genetic data suggest. The 28S rDNA uncorrected *p*-distance between Hokkaido and Punat, 0.02160, was much greater than a maximum intraspecific distance, 0.00543, observed within the Caribbean population of the pseudocerotid species *Pseudoceros bicolor* Verrill, 1901 (Litvaitis et al. 2010). In addition, the partial 28S rDNA sequences of the two distinct geographical populations (South Florida vs. the Great Barrier Reef) of *P. splendidus* (Lang, 1884) have been reported to be identical (Litvaitis et al. 2019), even though the two distributions are over 10,000 km far apart. It suggests that the intra-specific genetic variation in a cotylean cosmopolitan species can be as limited as in an endemic species. Without the morphological data of the Punat material (Dittmann et al. 2019) and the molecular data from the type locality (St. Andrews, Scotland), we cannot exclude the possibility that the Punat specimen may not represent *S. ellipse* sensu stricto. Further studies are necessary to firmly establish the taxonomic identity of *S. ellipse*,

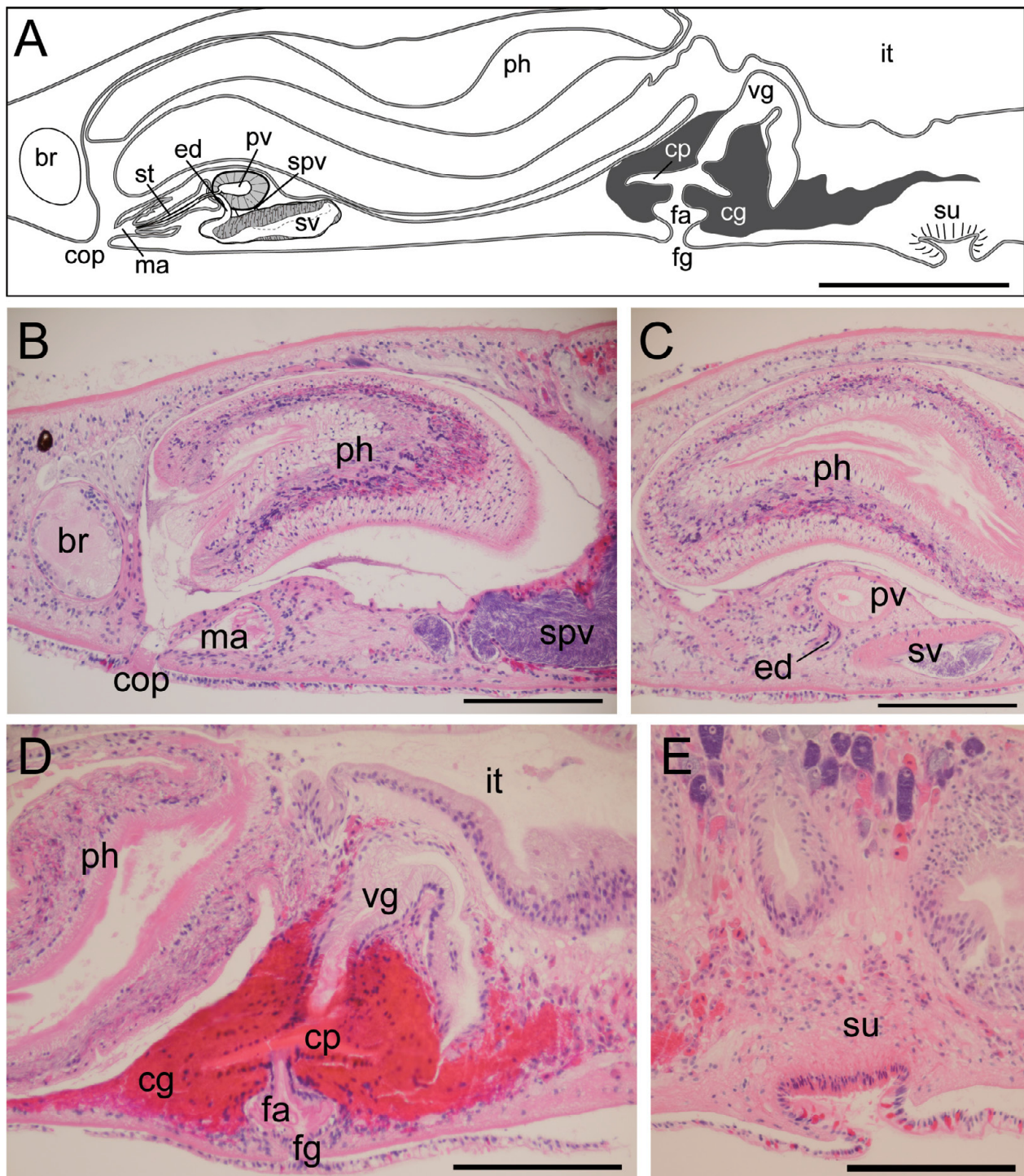


Figure 4. *Stylostomum ellipse*, sagittal sections, head to the left, ICHUM 6003. **A.** Diagrammatic reconstruction of copulatory complex. **B** Common pore including mouth and male gonopore. **C** Prostatic vesicle and seminal vesicle. **D** Female reproductive organ. **E** Sucker. Abbreviations: br, brain; cg, cement gland; cop, common pore; cp, cement pouch; ed, ejaculatory duct; fa, female atrium; fg, female gonopore; it, intestine; ma, male atrium; ph, pharynx; pv, prostatic vesicle; spv, spermiducal vesicle; st, stylet; sv, seminal vesicle; su, sucker; vg, vagina. Scale bars: 500 μ m (**A**); 300 μ m (**B–E**).

including a careful morphological and molecular comparison among the populations around the northeastern and south Atlantic, and from the type locality. Likewise, confirmation of the validity pertaining to the five potentially subjective synonyms *S. antarcticum*, *S. punctatum*, *S. roseum*, *S. sanguineum*, and *S. variabile* requires genetic and morphological examination of material from each type locality.

Acknowledgements

We thank Mr Shoichi Hamano and Mr Hidenori Katsuragawa (Akkeshi Marine Station, Hokkaido University) for assistance in collecting samples by dredging. We are also thankful to all of the participants of the Laboratory Course in Marine Biology I in Akkeshi during 2017–2019 (Hokkaido University) for their help in

finding samples. We are grateful to Dr Keiich Kakui (Hokkaido University) for managing the course and our sampling. This study was funded by Research Institute of Marine Invertebrates (FY 2019, No. 15 for AT).

Authors' Contributions

YO collected samples. AT and YO conducted the histological examinations. AT performed the molecular experiments and drafted the manuscript. HK contributed to improvement of the manuscript. All authors read and approved the final manuscript.

References

- Bassindale R, Barrett JH (1957) The Dale Fort marine fauna. *Proceedings of the Bristol Naturalists' Society* 29 (3): 227–328.
- Bergendal D (1890) Studien über nordische Turbellarien und Nemeriten. Vorläufige Mittheilung. Öfversigt af Kongl. Vetenskaps-Akademiens Förhandlingar Stockholm 6: 323–328.
- Bock S (1913) Studien über Polycladen. *Zoologische Beiträge aus Uppsala* 2: 31–344.
- Bock S (1931) Die Polycladen der deutschen Südpolar-Expedition 1901–1903. *Deutsche Südpolar-Expedition 20 (Zoology)*: 259–304.
- Boom R, Sol CJ, Salimans MM, Jansen CL, Wertheim-van Dillen PM, Noordaa J van der (1990) Rapid and simple method for purification of nucleic acids. *Journal of Clinical Microbiology* 28: 495–503. <https://doi.org/10.1128/JCM.28.3.495-503.1990>
- Bresslau E (1928–33) Turbellaria. In: Kükenthal W, Krumbach T (Eds) *Handbuch der Zoologie: eine Naturgeschichte der Stämme des Tierreiches, Vol. II, Part I*. Walter de Gruyter, Berlin and Leipzig, 52–319.
- Browne ET, Thompson IC, Gamble FW, Herdman WA, Cunningham JT, Beaumont WI, Weiss FE (1898) The Fauna and Flora of Valencia Harbour on the West Coast of Ireland. *Proceedings of the Royal Irish Academy* (1889–1901) 5: 667–854.
- Carus JV (1885) Vennes Polycladidea. In: Carus JV (Ed.) *Prodromus faunae mediterraneae, sive descriptio animalium maris Mediterranei incolarum, quam comparata silva rerum quatenus innotuit, adiectis locis et nominibus vulgaribus eorumque auctoribus in commodum zoologorum I*. E. Schweizerbart, Stuttgart, 148–158. <https://doi.org/10.5962/bhl.title.11523>
- Cinar ME (2014) Checklist of the phyla Platyhelminthes, Xenacoelomorpha, Nematoda, Acanthocephala, Myxozoa, Tardigrada, Cephalorhyncha, Nemertea, Echiura, Brachiopoda, Phoronida, Chaetognatha, and Chordata (Tunicata, Cephalochordata, and Hemichordata) from the coasts of Turkey. *Turkish Journal of Zoology* 38 (6): 698–722.
- Crothers JH (1966) Dale Fort marine fauna, 2nd Edition. *Field Studies*, London, xxiv+169 pp.
- Dalyell JG (1853) The powers of the creator displayed in the creation; or, observations on life amidst the various forms of the humbler tribes of animated nature; with practical comments and illustrations 2. John Van Voorst, London, 359 pp. <https://doi.org/10.5962/bhl.title.21823>
- Diesing KM (1862) Revision der Turbellarien. Abtheilung: Dendrocoelen. *Sitzungsberichte der Kaiserlichen Akademie der Wissenschaften Wien* 44: 485–578. <https://doi.org/10.5962/bhl.title.2108>
- Dittmann IL, Cuadrado D, Aguado MT, Noreña C, Egger B (2019) Polyclad phylogeny persists to be problematic. *Organisms Diversity & Evolution* 19: 585–608. <https://doi.org/10.1007/s13127-019-00415-1>
- Eales NB (1961) The littoral fauna of the British Isles: a handbook for collectors by N. B. Eales with a forward by the late Stanley Kemp, 3rd Edition. Cambridge University Press, London, 306 pp.
- Faasse M, Lighthart M (2007) De Nederlandse polyclade platwormen (Platyhelminthes: Turbellaria: Polycladida): IV. *Stylostomum elipse* en *Imogine necopinata* (en *Euplana gracilis*). *Het Zeepaard* 67 (2): 44–47.
- Faubel A (1984) The Polycladida, Turbellaria. Proposal and establishment of a new system. Part II. The Cotylea. *Mitteilungen aus dem Hamburgischen Zoologischen Museum und Institut* 81: 189–259.
- Faubel A, Warwick RM (2005) The marine flora and fauna of the Isles of Scilly: free-living Platyhelminthes ('Turbellaria'). *Journal of Natural History* 39 (1): 1–45. <https://doi.org/10.1080/00222930310001613593>
- Farran GP (1915) Results of a Biological Survey of Blacksod Bay, Co. Mayo, compiled by G.F. Farran, with notes on the Lichenes by M. C. Knowles, and on the Tunicata by R. Hartmeyer. Fisheries Branch, Scientific Investigations, 1914, No 3, Department of Agriculture and Technical Instruction for Ireland, Dublin, 72 pp.
- Galleni L, Puccinelli I (1981) Karyological observation on polyclads. *Hydrobiologia* 84: 31–44. https://doi.org/10.1007/978-94-009-8668-8_7
- Gamble FW (1893a) Contributions to a knowledge of British marine Turbellaria. *Quarterly Journal of Microscopical Science* 34: 433–528.
- Gamble FW (1893b) The Turbellaria of Plymouth Sound and the neighbourhood. *Journal of the Marine Biological Association of the United Kingdom* 3 (1): 30–47. <https://doi.org/10.1017/S0025315400049547>
- Gamble FW (1893c) Report on the Turbellaria of the L.M.B.C. district. *Proceedings and Transactions of the Liverpool Biological Society* 7: 148–174.
- Hallez P (1893) Catalogue des turbellariés (Rhabdocoelides, Triclaides et Polyclades) du Nord de la France et de la côte Boulonnaise. *Revue Biologique du nord de la France* 5: 1–239. <https://doi.org/10.5962/bhl.title.11545>
- Hallez P (1894) Catalogue des Rhabdocoelides, Triclaides & Polyclades du Nord de la France, 2nd edition. Léonard Danel, Lille, 239 pp.
- Hallez P (1905) Note préliminaire sur les polyclades recueillis dans l'Expédition antarctique du 'Français'. *Bulletin de la Société Zoologique de France* 30: 124–127.
- Hallez P (1907) Vers polyclades et triclaides maricoles. In: Charcot J (Ed.) *Expédition antarctique française (1903–1905)*. Masson et Cie, Paris, 1–26.
- Heath H, McGregor EA (1912) New polyclads from Monterey Bay, California. *Proceedings of the Academy of Natural Sciences of Philadelphia* 64: 455–488.
- Hendelberg J (1974) Polyclader yid svenska väskusten. *Zoologisk Revys* 36: 3–18.
- Holleman JJ (1972) Marine turbellarians of the Pacific Coast 1. *Proceedings of the Biological Society of Washington* 85 (34): 405–412.
- Holleman JJ (2001) A review of the genus *Stylostomum* Lang, 1884 (Platyhelminthes, Polycladida) and the description of a new species. *Belgian Journal of Zoology (Supplement)* 131 (1): 227–229.
- Jensen OS (1878) Turbellaria ad litora norvegiae occidentalia. *Turbellarier ved Norges Vestkyst*. Bergens Museums Skrifter 1: 1–98. <https://doi.org/10.5962/bhl.title.1932>
- Johnston G (1865) A catalogue of the British non-parasitical worms in the collection of the British Museum. British Museum, London, 365 pp. <https://doi.org/10.5962/bhl.title.12291>
- Kato K (1939) Report of the biological survey of Mutsu Bay. 34. The polyclads of Mutsu Bay. *Science Reports of the Tohoku Imperial University* 14: 141–153.
- Kato K (1944) Polycladida of Japan. *Journal of Sigenkagaku Kenkyusyo* 1: 257–319.
- Kumar S, Stecher G, Tamura K (2016) MEGA7: molecular evolutionary genetics analysis version 7.0 for bigger datasets. *Molecular Biology and Evolution* 33 (7): 1870–1874. <https://doi.org/10.1093/molbev/msw054>
- Lang A (1884) Die Polycladen (Seeplanarien) des Golfes von Nea-

- pel und der angrenzenden Meeresabschnitte. Eine Monographie. Fauna und Flora des Golfes von Neapel 11: 1–688.
- Laverack MS, Blackler M (1974) Fauna and flora of St. Andrews Bay. Scottish Academic Press, Edinburgh and London, 310 pp.
- Leuckart R (1859) Bericht über die wissenschaftlichen Leistungen in der Naturgeschichte der niederen Thiere während des Jahres 1858. Archiv für Naturgeschichte 25 (2): 97–255.
- Litvaitis MK, Bolaños DM, Quiroga SY (2010) When names are wrong and colours deceive: unravelling the *Pseudoceros bicolor* species complex (Turbellaria: Polycladida). Journal of Natural History 44 (13–14): 829–845. <https://doi.org/10.1080/00222930903537074>
- Litvaitis MK, Bolaños DM, Quiroga SY (2019) Systematic congruence in Polycladida (Platyhelminthes, Rhabditophora): are DNA and morphology telling the same story? Zoological Journal of the Linnean Society 186 (4): 865–891. <https://doi.org/10.1093/zoolinnean/zlz007>
- Lo Bianco S (1888) Notizie biologiche riguardanti specialmente il periodo di maturita sessuale degli animali del Golfo di Napoli. Mitteilungen aus der Zoologischen Station zu Neapel 8: 385–440.
- Marcus E (1954) Reports of the Lund University Chile Expedition 1948–1949. 11. Turbellaria. Lunds Universitets Årsskrift. Ny Följd 49 (13): 1–115.
- McIntosh WC (1874) On the invertebrate marine fauna and fishes of St. Andrews. Annals and Magazine of Natural History Series 4 14 (80): 144–155. <https://doi.org/10.1080/00222937408680938>
- McIntosh WC (1875) The marine invertebrates and fishes of St. Andrews. Adam and Charles Black, Edinburgh, vi + 186 pp. <https://doi.org/10.5962/bhl.title.6247>
- Micoletzky H (1910) Die Turbellarienfauna des Golfes von Triest. Arbeiten aus dem Zoologischen Institut der Universität Wien 18: 167–182.
- Noreña C, Marquina D, Perez J, Almon B (2014) First records of *Cotylea* (Polycladida, Platyhelminthes) for the Atlantic coast of the Iberian Peninsula. ZooKeys 404: 1–22. <https://doi.org/10.3897/zookeys.404.7122>
- Pitale R, Apte D (2019) Intertidal Euryleptid polyclads and description of a new *Stylostomum* Lang, 1884 from Maharashtra, India. Zootaxa 4652 (2): 317–339. <https://doi.org/10.11646/zootaxa.4652.2.5>
- Plehn M (1896) Neue Polycladen, gesammelt von Herrn Kapitän Chierchia bei der Erdumschiffung der Korvette Vettor Pisani, von Herrn Prof. Dr Kükenthal im nördlichen Eismeer und von Herrn Prof. Dr Semon in Java. Jenaische Zeitschrift für Naturwissenschaft 30: 137–176.
- Prudhoe S (1982) British polyclad turbellarians. In: Kermack DM, Barnes RSK (Eds) Synopses of the British Fauna (New Series) 6. The Linnean Society of London and the Estuarine and Brackish-water Sciences Association, Cambridge University Press, Cambridge, 1–77.
- Prudhoe S (1985) A monograph on Polyclad Turbellaria. Oxford University Press, New York, 259 pp.
- Sonnenberg R, Nolte AW, Tautz D (2007) An evaluation of LSU rDNA D1–D2 sequences for their use in species identification. Frontiers in Zoology 4 (1): 1–12. <https://doi.org/10.1186/1742-9994-4-6>
- Southern R (1936) Turbellaria of Ireland. Proceedings of the Royal Irish Academy 43 (B): 43–72.
- Steinböck O (1932) Die Turbellarien des arktischen Gebietes. Fauna Arctica 6: 295–342.
- Stainböck O (1933) Die Turbellarienfauna der Umgebung von Rovigno. Thalassia 1 (5): 1–33.
- Stummer-Traunfels R von (1933) Polycladida (continued). In: Bronn HG (Ed.) Klassen und Ordnungen des Tierreichs 4. Akademische Verlagsgesellschaft, Leipzig, 3485–3596.
- Tsuyuki A, Oya Y, Kajihara H (2019) A new species of *Prosthio-stomum* (Platyhelminthes: Polycladida) from Shirahama, Japan. Species Diversity 24 (2): 137–143. <https://doi.org/10.12782/specdiv.24.137>
- Vaillant L (1889) Lombriciniens, hirudiniens, bdellomorphes, téré-tulariens et planariens. In: Quatrefages A de (Ed.) Histoire naturelle des annelés marins et d'eau douce 3. Librairie encyclopédique de Roret, Paris, xii + 768 pp. <https://doi.org/10.5962/bhl.title.122818>
- Verrill AE (1901) Additions to the fauna of the Bermudas from the Yale Expedition of 1901, with notes on other species. Transactions of the Connecticut Academy of Arts and Sciences 11: 15–62.
- Westblad E (1952) Turbellaria (excl. Kalyptorhynchia) of the Swedish South Polar Expedition 1901–1903. Further Zoological Results of the Swedish Antarctic Expedition 1901–1903 4 (8): 1–55.