



Discovery of *Lasioglossum albescens* (Smith, 1853) (Hymenoptera, Halictidae) from the Kinmen Islands, Taiwan

Ryuki Murao¹, Wen-Chi Yeh², Sheng-Shan Lu², I-Hsing Sung³

1 Regional Environmental Planning Co. Ltd., 1-10-12, Muromi, Sawara-ku, Fukuoka, 814-0015, Japan. **2** Division of Forest Protection, Taiwan Forestry Research Institute, No. 53 Nan-hai Road 10016, Taipei, Taiwan. **3** Department of Plant Medicine, National Chiayi University, No. 300 Syue-fu Road 60004, Chiayi, Taiwan.

Corresponding author: Ryuki Murao, r.murao@mbr.nifty.com.

Abstract

Lasioglossum albescens (Smith, 1853) is recorded from Taiwan for the first time. The specimens were collected in the Kinmen Islands, several kilometers east of Xiamen, in Fujian, China. This species is distinguished from the other Taiwanese *Lasioglossum* (*Ctenonomia*) species by a combination of male clypeus black, mesoscutum with relatively sparse punctures between parapsidal and median lines in both sexes, and first metasomal tergum without distinct punctures and with distinct tessellation over entire surface in both sexes.

Keywords

Distribution, eastern Asia, new record, Oriental Region.

Academic editor: Jason Gibbs | Received 11 April 2020 | Accepted 22 June 2020 | Published 4 August 2020

Citation: Murao R, Yeh WC, Lu SS, Sung IH (2020) Discovery of *Lasioglossum albescens* (Smith, 1853) (Hymenoptera, Halictidae) from the Kinmen Islands, Taiwan. Check List 16 (4): 963–967. <https://doi.org/10.15560/16.4.963>

Introduction

The cosmopolitan bee genus *Lasioglossum* Curtis, 1833 (Hymenoptera, Halictidae) includes approximately 1,800 species worldwide (Ascher and Pickering 2020). One of them, *Lasioglossum* (*Ctenonomia*) *albescens* (Smith, 1853), has been recorded or listed from various countries in Southern and Southeastern Asia (Fig. 1): Pakistan (Ebmer 1998), India (e.g., Smith 1853, 1879; Matsumura and Sakagami 1971), Nepal (Matsumura and Sakagami 1971), Sri Lanka (Strand 1913a; Wijesekara 2001), Bangladesh (Tadauchi and Alam 1993), Myanmar (Bingham 1897), Thailand (Cockerell 1937; Sakagami 1968; Matsumura and Sakagami 1971), Cambodia (Sakagami 1968; Matsumura and Sakagami 1971); Malaysia (Matsumura and Sakagami 1971), Singapore (Ascher et al. 2019), Indonesia (Strand 1910), Philippines

(Ashmead 1904; Strand 1910), and China (Zhang 2017). The biology of this species has been reported by Batra (1966), Sakagami (1968), and Matsumura and Sakagami (1971). According to their papers, the biological information can be summarized as follows: nests are built on sparsely grassy slope and sometimes forming nest aggregation; nest structure is the type II or IIIa of Sakagami and Michener (1962); social structure seems to be communal; and it is estimated that the brood-rearing activities has two peaks at highlands of Nepal, in spring and autumn.

This species is divided into three subspecies: *L. albescens* s. str., *L. albescens sepulchrale* (Cameron, 1897), and *L. albescens iwatai* (Sakagami, 1968). According to Sakagami (1968), *L. albescens sepulchrale* is usually

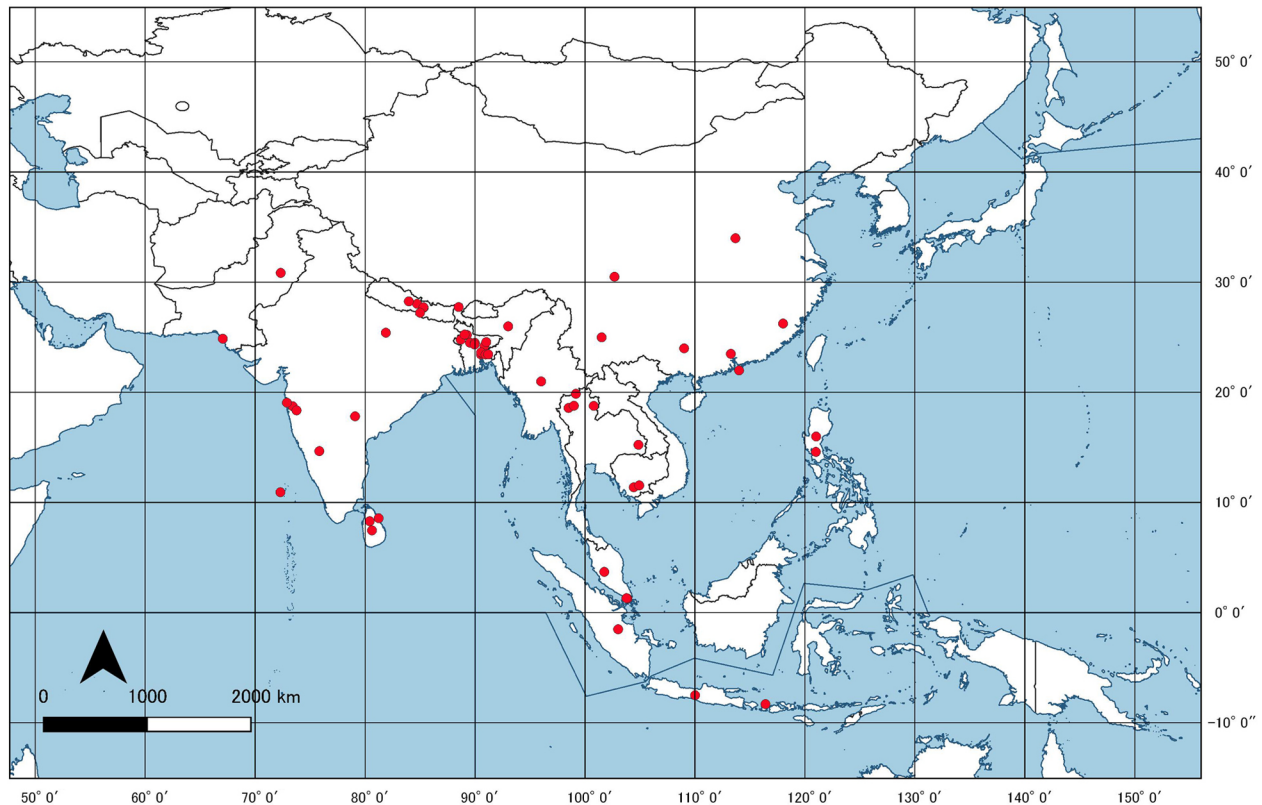


Figure 1. Distribution map of *Lasioglossum albescens* in Southern and Southeastern Asia.

found in mountainous areas, while *L. albescens* s. str. more from plains and hilly areas, and *L. albescens iwatai* inhabits the lowlands of Thailand and Cambodia (Sakagami 1968). However, separation of subspecies is often difficult because of a remarkable and continuous variability of the character states (Matsumura and Sakagami 1971).

In the course of our taxonomic study of Taiwanese bees, we found *L. albescens* from the Kinmen Islands, Taiwan, for the first time. Four species of *Lasioglossum* (*Ctenonomia*) are currently recorded from Taiwan: *L. halictoides* (Smith, 1858), *L. kumejimense* (Matsumura & Uchida, 1926), *L. taihorine* (Strand, 1914), and *L. vagans* (Smith, 1857) (Strand 1910, 1913b, 1914; Cockerell 1911; Blüthgen 1926; Murao et al. 2009). In this paper, we report the first records of *L. albescens* from Taiwan, with discussion on morphological variation of the specimens examined.

Methods

The specimens of *Lasioglossum albescens* examined in the present study are deposited at the Forest Arthropoda Collection of Taiwan, in the Taiwan Forestry Research Institute. Specimens were identified based on Zhang (2017) and by comparison with identified specimens preserved in the Entomological Laboratory, Faculty of Agriculture, Kyushu University, Fukuoka, Japan, and the Museum of Nature and Human Activities, Hyogo, Japan.

Abbreviations of measurements used in the text are as follows: AOD = antennocular distance (shortest distance

between outer margin of antennal socket and inner margin of compound eye); BL = body length (from antennal base to tip of pygidial plate); CAL = clypeoalveolar distance (between lower margin of antennal socket and lower margin of supraclypeal area in frontal view); CPL = clypeal length (between upper and lower margins of clypeus in frontal view); d = diameter; EL = eye length; EW = eye width (maximum length and width of the compound eye); Fn = nth antennal flagellomere; FnL = length of nth flagellomere (measured along the ventral surface); FnW = width of nth flagellomere (measured from dorsal and ventral surfaces of flagellomere); GW = genal width (maximum width of the genal area when seen in lateral view); HL = head length (from top of vertex to lower margin of clypeus); HW = head width (between outer margins of compound eyes in frontal view); IAD = interantennal distance (between inner margins of antennal socket); IOD = interocellar distance (between lateral ocelli); IS = interspace between punctures (e.g., IS 0.5 d means $\frac{1}{2}$ of the diameter of a puncture); LOD = lower interorbital distance; MNL = metanotal length; MOD = maximum interorbital distance; MPL = metapostnotal length; MsW = maximum mesosomal width; MtW = maximum metasomal width; OCD = ocellocipital distance (shortest distance between margins of lateral ocellus and vertex when seen in upper view); OOD = ocellocular distance (shortest distance between lateral ocellus and inner margin of compound eye); PP = punctures; SCL = mesoscutellar length; Sn = nth metasomal sternum; SPL = scape length (a straight line from base to tip of scape); Tn = nth metasomal tergum; UOD = upper

interorbital distance; WL = wing length (length of fore wing from the apical point to the base including tegula)..

Distribution maps (Figs 1, 2) were made by QGIS 3.6 (QGIS Development Team 2020) using map data downloaded from Natural Earth (<https://www.natural-earthdata.com/>). The point data of Figure 1 are based on the following papers or databases: Bingham (1897), Ashmead (1904), Strand (1910), Cockerell (1937), Sakagami (1968), Matsumura and Sakagami (1971), Wijesekara (2001), Tadauchi and Alam (1993), Ascher et al. (2019), Ascher and Pickering (2020), and Entomology Database, BeeFTadauchi (<http://konchudb.agr.agr.kyushu-u.ac.jp/beeftadauchi/>). The localities extracted from these papers were geocoded by GeoNames (<https://www.geonames.org/>).

Results

Family Halictidae Thomson, 1869

Genus *Lasioglossum* Curtis, 1833

Subgenus *Ctenonomia* Cameron, 1903

Lasioglossum (Ctenonomia) albescens (Smith, 1853)

Figures 2, 3

New records. TAIWAN • 1 female, 3 males; Kinmen Co., Yingkeng, Great Kinmen; 24°29'41.92"N, 118°25'05.36"E; 1 Oct. 2014; S.S. Lu and W.C. Yeh leg.; crop field; TFRI.

The Kinmen islands are composed of Great Kinmen and Lesser Kinmen, the former is where *L. albescens* was collected. The collecting site in Yingkeng of Great Kinmen is a crop field, located near Mt. Taiwu, and mainly cultivated with the *Sorghum* Moench, 1794. *Lasioglossum (Leuchalictus) formosae* (Strand, 1910) was collected simultaneously from the same site and it seems to be more common in Great Kinmen than *L. albescens*.

Identification. Measurements (mm). Female ($n = 1$). BL = 9.00, WL = 7.08, HL = 2.40, HW = 2.53, IOD = 0.43, OOD = 0.39, OCD = 0.33, UOD = 1.50, MOD = 1.70, LOD = 1.26, IAD = 0.22, AOD = 0.46, CAL = 0.46, CPL = 0.50, EL = 1.77, EW = 0.67, GW = 0.67, SPL = 0.93, FIL = 0.13, F2L = 0.13, F3L = 0.13, F2W = 0.17, MsW = 3.00, SCL = 0.60, MNL = 0.37, MPL = 0.43, MtW = 2.93

Male ($n = 1$). BL = 7.67, WL = 6.25, HL = 2.23, HW = 2.00, IOD = 0.41, OOD = 0.33, OCD = 0.22, UOD = 1.20, MOD = 1.35, LOD = 0.98, IAD = 0.24, AOD = 0.33, CAL = 0.37, CPL = 0.50, EL = 1.47, EW = 0.60, GW = 0.60, SPL = 0.50, FIL = 0.15, F2L = 0.24, F3L = 0.24, F2W = 0.17, MsW = 2.47, SCL = 0.57, MNL = 0.30, MPL = 0.43, MtW = 2.20.

Lasioglossum albescens can be distinguished from the other four *L. (Ctenonomia)* species occurring in Taiwan by a combination of the following characteristics: male clypeus black, mesoscutum with relatively sparse PP between parapsidal and median lines (Fig. 3D) in

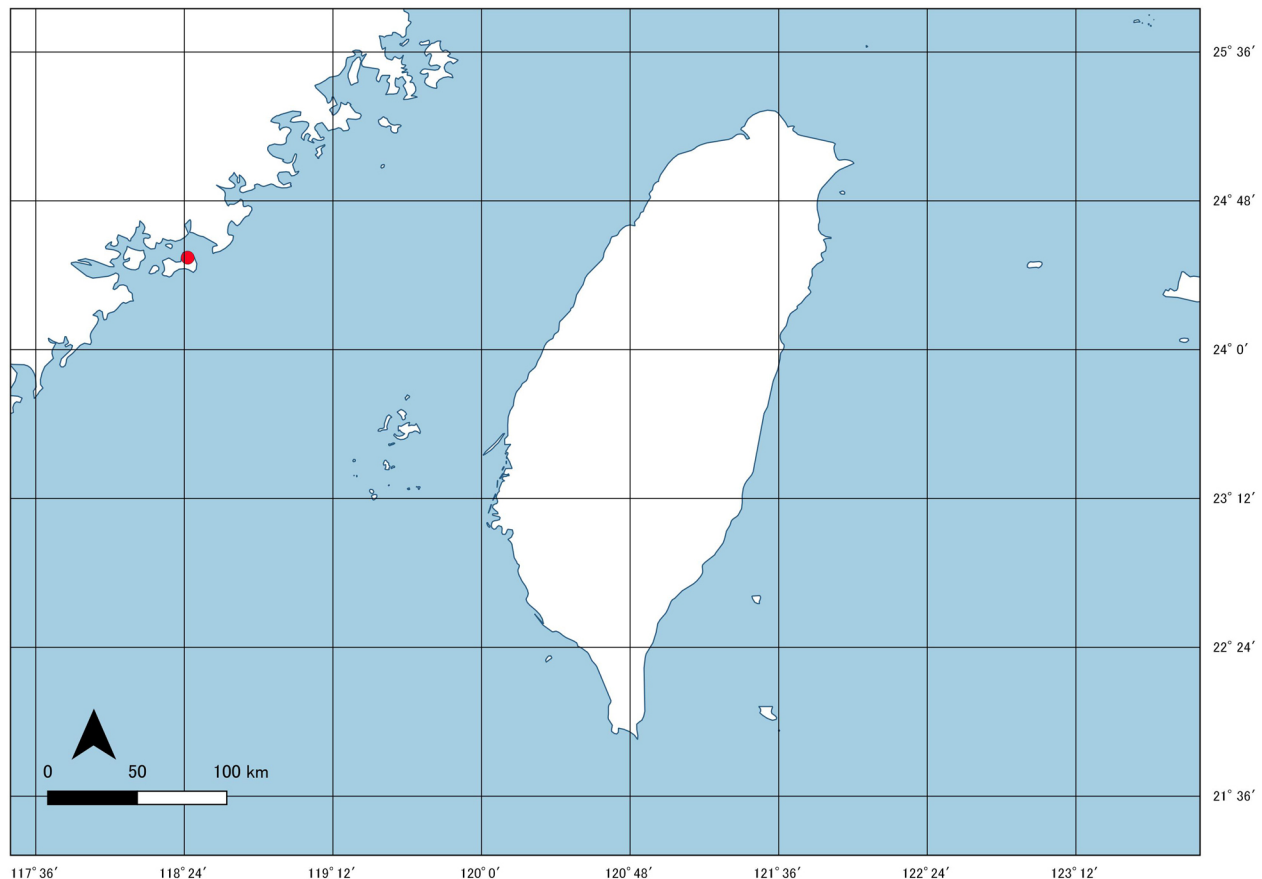


Figure 2. Distribution map of *Lasioglossum albescens* in Taiwan.

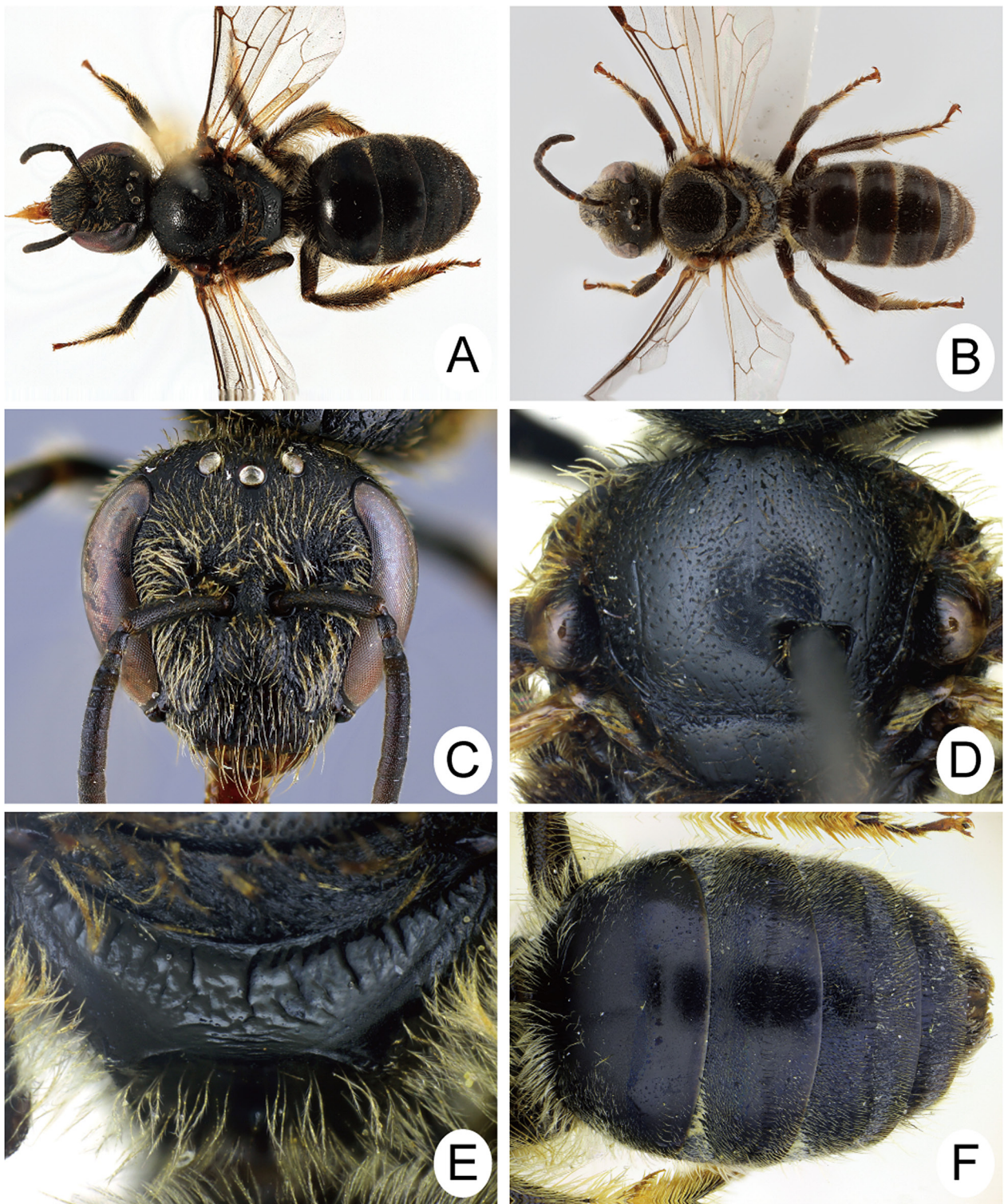


Figure 3. *Lasioglossum albescens*. **A, B.** General habitus. **C.** Head in frontal view. **D.** Mesoscutum. **E.** Metapostnotum. **F.** Metasomal terga. **A, C-F.** Female. **B.** Male.

both sexes, and T1 without distinct PP and with distinct tessellation over entire surface in both sexes.

Discussion

Based only on the material examined, it is difficult to determine whether the Kinmen's specimens belong to *L. albescens* str. or *L. albescens sepulchrale*. The female specimen collected from Yingkeng shows the following

characteristics: 1) head (Fig. 3C) slightly longer than wide (ratio of HL / HW 1.12); 2) mesoscutum (Fig. 3D) with relatively sparse PP between parapsidal and median lines (maximum IS = 4 d); 3) mesoscutum weakly shiny, IS with weak tessellation; 4) metapostnotum of propodeum (Fig. 3E) with relatively sparse ridges, IS of ridges shiny and smooth; 5) oblique and lateral carinae on posterior surface of propodeum complete but not strong; 6) wing veins pale brown; 7) T1 (Fig. 3F) basally with thin

and white hair patches. According to Blüthgen (1926), Sakagami (1968), and Matsumura and Sakagami (1971), the characteristics 2 and 4 are shared with *L. albescens sepulchrale*, but the 5–7 are indicative of *L. albescens* s. str. The sculpture of mesoscutum seems to be intermediate between this two subspecies.

More than 175 species of bees are known from Taiwan (Yeh, unpublished data) and about half of them are endemic to the island. However, no researcher has ever reported the bee fauna of the Kinmen Islands, located several kilometers east of Xiamen, in Fujian, China (Fig. 2). From a biogeographical viewpoint, the Kinmen islands may share more similar bee fauna with Mainland China than Taiwan, which is approximately 200 km away. This is evidenced not only by the present record of *L. albescens* but also by two vespid wasps recently reported from Lesser Kinmen (= Leiyu), namely *Vespa tropica* (Linnaeus, 1758) and *Scolia azurea* (Christ, 1791) (Chang 2017). It can be expected that further investigation on the bee fauna of the Kinmen islands will reveal more species that do not occur on the main island of Taiwan.

Acknowledgements

We would like to express our thanks to two reviewers for their comments and suggestions to improve the earlier drafts of the manuscript. This study was supported partly by Taiwan Forestry Research Institute (grant number 102AS-13.5.7-FI-G2).

Authors' Contributions

SSL and WCY collected specimens. RM identified specimens. All authors have read and approved the submitted manuscript.

References

- Ascher JS, Pickering J (2020) DiscoverLife bee species and world checklist (Hymenoptera: Apoidea: Anthophila). http://www.discoverlife.org/mp/20q?guide=Apoidea_species. Accessed on: 2020-6-21.
- Ascher JS, Soh ZWW, Lee RYY, Leong AQ, Chui SX, Lai JLL, Lee JXQ, Foo MS, Soh EY (2019) Bees of the Bukit Timah Nature Reserve and vicinity. Garden's Bulletin Singapore 71 (Supplement 1): 245–271.
- Ashmead WH (1904) A new genus and some new species of Hymenoptera from the Phillipine Islands. The Canadian Entomologist 36 (10): 281–285.
- Batra SWT (1966) Nests and social behavior of halictine bees of India (Hymenoptera, Halictidae). The Indian Journal of Entomology 28: 375–393.
- Bingham CT (1897) The Fauna of British India, including Ceylon and Burma, Hymenoptera, Vol. I. Wasps and Bees. Taylor and Francis, London, xxix + 577 pp.
- Blüthgen P (1926) Beiträge zur Kenntnis der indo-malayischen *Halictus*- und *Thrinchostoma*-Arten (Hym. Apidae, Halictinae). Zoologische Jahrbücher, Abteilung für Systematik, Geographie und Biologie der Tiere 51 (4–6): 375–698.
- Chang YJ (2017) A field guide to the Insects of Lieyu. Kinmen National Park, Kinmen, 343 pp.
- Cockerell TDA (1911) Descriptions and records of bees. XXXIX. Annals and Magazine of Natural History (Series 8) 8: 660–673. <https://doi.org/10.1080/00222931108693076>
- Cockerell TDA (1937) Bees of the genera *Halictus* and *Ceratina* from Siam. American Museum Novitates 950: 1–12.
- Ebmer AW (1998) Asiatische Halictidae, 7. Neue *Lasioglossum*-Arten mit einer Übersicht der *Lasioglossum* s. str.-Arten der nepalischen und yunnanischen Subregion, sowie des nördlichen Zentral-China (Insecta: Hymenoptera: Apoidea: Halictidae: Halictinae). Linzer Biologische Beiträge 30 (1): 365–430.
- Matsumura T, Sakagami SF (1971) Bees from Nepal II. *Lasioglossum albescens*, with some bionomic notes (Hymenoptera, Halictidae). Annotationes Zoologicae Japonenses 44 (1): 47–55.
- Murao R, Tadauchi O, Yamauchi T (2009) Taxonomic revision of the subgenus *Ctenonomia* of the genus *Lasioglossum* (Hymenoptera, Halictidae) in Japan. Esakia 49: 75–94.
- Sakagami SF (1968) Nesting habits and other notes on an indomalayan halictine bee, *Lasioglossum albescens* with description of *L. a. iwatai* ssp. nov. (Hymenoptera, Halictidae). Malayan Nature Journal 21 (2): 85–99.
- Sakagami SF, Michener CD (1962) The nest architecture of the sweat bees (Halictinae), a comparative study. University of Kansas Press, Lawrence. v + 135 pp.
- Smith F (1853) Catalogue of hymenopterous insects in the collection of the British Museum. Part I. Andrenidae and Apidae. British Museum, London. i + 198 pp.
- Smith F (1879) Descriptions of new species of Hymenoptera in the collection of the British Museum. British Museum, London. xxi + 240 pp.
- Strand E (1910) Neue süd- und ostasiatische *Halictus*-Arten im kgl. zoologischen Museum zu Berlin. (Hym., Apidae). Berliner Entomologische Zeitschrift 54: 179–211.
- Strand E (1913a) Apidae von Ceylon, gesammelt 1899 von Herrn Dr. Horn. Archiv für Naturgeschichte, Abteilung A 2: 135–150.
- Strand E (1913b) H. Sauter's Formosa-Ausbeute. Apidae I. Supplementa Entomologica 2: 23–67.
- Strand E (1914) H. Sauter's Formosa-Ausbeute. Apidae II (Die *Halictus*-Arten von Formosa). Archiv für Naturgeschichte, Abteilung A 79: 147–171.
- Tadauchi O, Alam MZ (1993) Survey of pollinating wild bee fauna on mustard fields in Bangladesh. Bulletin of the Institute of Tropical Agriculture Kyushu University 16: 91–106.
- Wijsekara A (2001) An annotated list of bees (Hymenoptera: Apoidea: Apiformis) of Sri Lank. Tijdschrift voor Entomologie 144: 145–157.
- Zhang R (2017) A newly recorded species of subgenus *Lasioglossum* (*Ctenonomia*) in China. Journal of Anhui Agricultural Sciences 45: 10–11.