

NOTES ON GEOGRAPHIC DISTRIBUTION

**Amphibia, Anura, Hylidae, *Itapotihyla langsdorffii* (Duméril and Bibron, 1841):
Correction of older record and distribution extention**

Juliana M. D. Kleinsorge,¹ Roberta A. M. Fonseca,¹ Renata M. Pirani,² and Luciana B. Nascimento^{3*}

¹ Pontifícia Universidade Católica de Minas Gerais (PUC-MG), Departamento de Ciências Biológicas.
Avenida Dom José Gaspar 290. CEP 30535-610. Belo Horizonte, MG, Brazil.

² Universidade Federal de Viçosa, Departamento de Biologia Animal, Museu de Zoologia João Moojen.
Vila Gianetti 32, Campus UFV. CEP 36570-000. Viçosa, MG, Brazil.

³ Pontifícia Universidade Católica de Minas Gerais (PUC-MG), Pós-graduação em Zoologia de Vertebrados, Museu de Ciências Naturais. Avenida Dom José Gaspar 290. CEP 30535-610. Belo Horizonte, MG, Brazil.

* Corresponding author. E-mail: luna@pucminas.br

Itapotihyla langsdorffii (Duméril & Bibron, 1841) (Figure 1) occurs in South America in the Brazilian Atlantic Rainforest from the state of Sergipe (Arzabe and Loebmann 2006) to the state of Rio Grande do Sul (Lingnau et al. 2006). At the state of Minas Gerais, this species was first registered at *Parque Estadual do Rio Doce* (19°48' – 19°29'S, 42°38' – 42°28'W, 236-515 m above sea level) (Feio et al. 1998; 1999) The most inland distribution report of *I. langsdorffii* at state of Minas Gerais is at municipality of Rio Novo (21°31'23"S, 43°11'01"W, 400 m above sea level) (Feio and Ferreira 2005) (Figure 2). However,

after verifying the geographical coordinates for the older records where *I. langsdorffii* was found, the coordinates of municipality of Rio Novo actually pertain to municipality of Goianá, state of Minas Gerais (IBGE 2003). *Itapotihyla langsdorffii* was considered vulnerable in the Red List of Endangered Species of the state of Minas Gerais (Machado et al. 1998). In the revision for this list (Machado et al. 2005), it was not considered threatened, but there is still few information about its occurrence in the state. Herein we report a new distribution record for *I. langsdorffii* in Minas Gerais (Figure 2).



Figure 1. A male specimen of *Itapotihyla langsdorffii*. Photo by Miguel Andrade.

During a herpetological survey at *Parque Estadual Serra do Intendente* and surroundings at municipality of Conceição do Mato Dentro, state of Minas Gerais (19°01'09.4" S, 043°35'03.9" W, 684 m above sea level), southern Espinhaço Mountain Range, on December 2007, one male specimen of *Itapotihyla langsdorffii* was collected (collection permits: *Instituto Chico Mendes de Conservação da Biodiversidade* (ICM-Bio) #13328-1; Instituto Estadual de Florestas (IEF) #164/07) and deposited in *Museu de Ciências Naturais, Pontifícia Universidade Católica de Minas Gerais* (MCNAM 9066.). *Cerrado* is the most representative biome at *Serra do Intendente*. At high elevations, the most common formation observed is *campo rupestre* (Drummond et al. 2005). The locality is also influenced by Atlantic Rainforest because of its inclusion at the Doce river basin.

The adult male was emitting advertisement calls from a tree branch of approximately 1,90 m high, at a riparian zone, about 50 m from edge of a permanent stream (snout-vent length = 87.4 mm).

Another specimen was in activity but it was not captured. The stream is a tributary of the Santo Antonio river, one of the most important rivers in Doce river basin.

So far, the geographical range of *Itapotihyla langsdorffii* is wide and continuous through the Atlantic Rainforest (Arzabe and Loebmann 2006; Frost 2007). For state of Minas Gerais, this species has only been registered at localities in *Zona da Mata*, at the Doce river basin (Feio et al. 1998; 1999; Feio and Ferreira 2005). This data expands the distribution of *I. langsdorffii*, about 125 km western of *Parque Estadual do Rio Doce*, being the most inland record in the state of Minas Gerais. This new record also represents the highest elevation reported for this species in Minas Gerais. The presence of *I. langsdorffii* in *Serra do Intendente*, municipality of Conceição do Mato Dentro, north of *Serra do Cipó*, indicates that the influence of Atlantic Rainforest ecosystem reaches the Espinhaço Mountain Range further north.

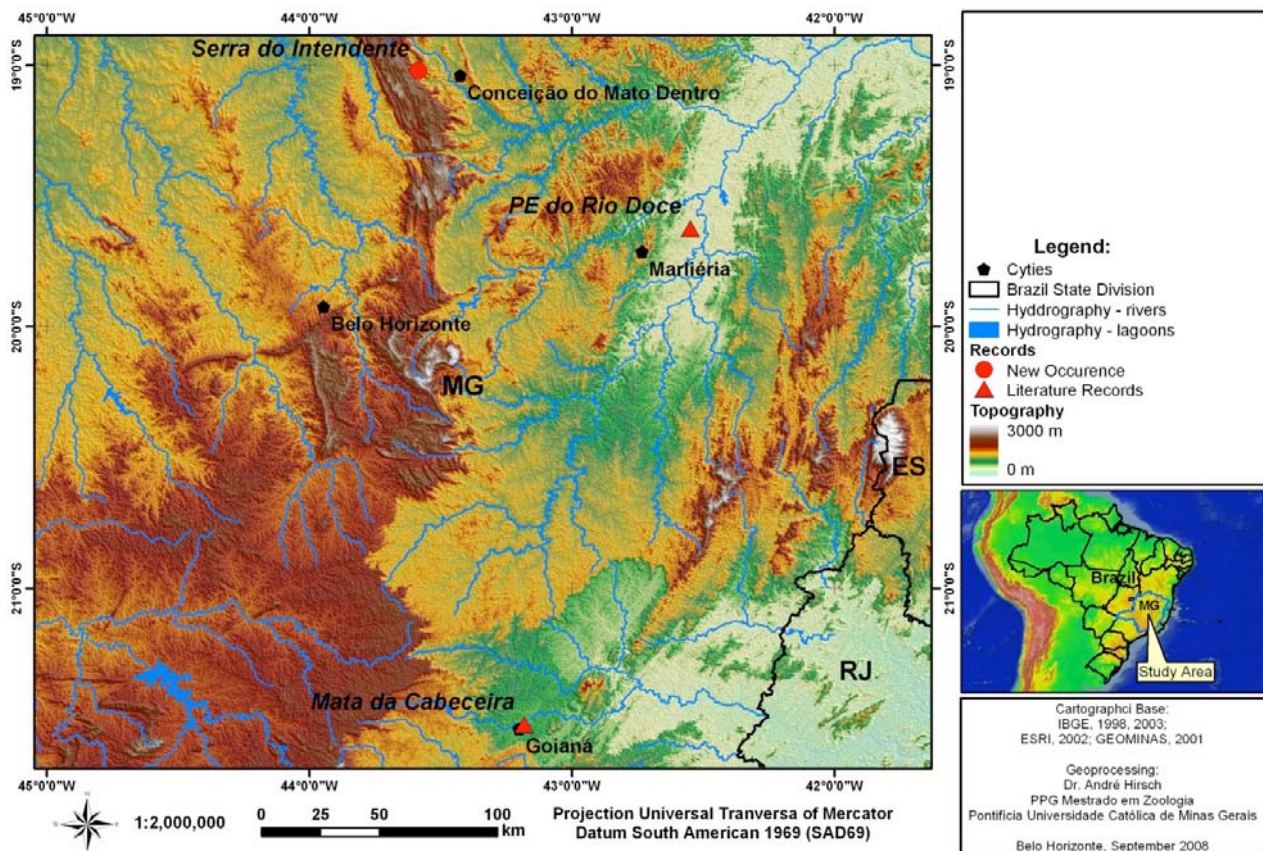


Figure 2. Distribution of *Itapotihyla langsdorffii* at the state of Minas Gerais, Brazil.

Acknowledgments: We thank André Hirsch for making the map; Miguel Andrade for the photograph of *I. langsdorffii*; Daniel Fernandes, Laura Alencar and Felipe Natali for support on fieldwork; Jay Oliver Freistadt for English revision of the manuscript. LBN thanks *Fundo de Incentivo à Pesquisa* (FIP/PUC Minas) and *Fundação de Amparo à Pesquisa do Estado de Minas Gerais* (FAPEMIG) for financial support.

Literature cited

- Arzabe, C. and D. Loebmann. 2006. Amphibian, Hylidae, *Itapotihyla langsdorffii*: distribution extension. *Check List* 2(2): 33-34.
- Drummond, G.M., C.S. Martins, A.B.M. Machado, F.A. Sebaio and Y. Antonini. 2005. Biodiversidade em Minas Gerais: um atlas para a sua conservação. Belo Horizonte: Fundação Biodiversitas. 222 p.
- Feio, R.N., U. Braga, H. Wiederhecker and P. Santos. 1998. Anfíbios do Parque Estadual do Rio Doce. Viçosa: Universidade Federal de Viçosa / Instituto Estadual de Florestas. 32 p.
- Feio, R.N., P. Santos and U. Caramaschi. 1999. New records of amphibians from Parque Estadual do Rio Doce, State of Minas Gerais, Brazil. *Herpetological Review* 30(1): 56-57.
- Feio, R.N. and P.L. Ferreira. 2005. Anfíbios de dois fragmentos de Mata Atlântica na Zona da Mata de Minas Gerais. *Revista Brasileira de Zoociências* 7(1): 121-128.
- Frost, D.R. 2007. Amphibian Species of the World: an Online Reference. Eletronic Database accessible at: <http://research.amnh.org/herpetology/amphibia/references.php?id=13762>. The American Museum of Natural History, USA. Captured on 2 October 2008.
- IBGE. 2003. Base Cartográfica Integrada do Brasil ao Milionésimo Digital - bCIMd. Versão 1.0. Eletronic Database accessible at: http://www2.ibge.gov.br/pub/Cartas_e_Mapas/. Captured on 29 September 2008.
- Lingnau, R., C. Zank, P. Colombo and G. Vinciprova. 2006. Amphibian, Hylidae, *Itapotihyla langsdorffii*: distribution extension. *Check List* 2(1): 38-39.
- Machado, A.B.M., G.A.B. Fonseca, R.B. Machado, L.M.S. Aguiar and L.V. Lins. 1998. Livro Vermelho das Espécies Ameaçadas de Extinção da Fauna de Minas Gerais. Belo Horizonte: Fundação Biodiversitas. 605 p.
- Machado, A.B.M., G.A.B. Fonseca, R.B. Machado, L.M.S. Aguiar and L.V. Lins. 2005. Livro Vermelho das Espécies Ameaçadas de Extinção da Fauna de Minas Gerais. Belo Horizonte: Fundação Biodiversitas. 157 p.

Received: January 2009

Revised: July 2009

Accepted: November 2009

Published online: December 2009

Editorial responsibility: Marcelo N. de C. Kokubum