

## NOTES ON GEOGRAPHIC DISTRIBUTION

### Reptilia, Testudines, Chelidae: *Hydromedusa tectifera*: Distribution extension in Brazil

Bernadete Maria de Sousa<sup>1</sup>  
Iara Alves Novelli<sup>1,2,3</sup>

<sup>1</sup> Universidade Federal de Juiz de Fora, Instituto de Ciências Biológicas, Laboratório de Herpetologia.  
Campus Universitário, Bairro Martelos. CEP 36036-330. Juiz de Fora, MG, Brazil.  
E-mail: bernadete.sousa@ufjf.edu.br

<sup>2</sup> Universidade Federal Rural do Rio de Janeiro, Pós-Graduação em Biologia Animal.  
BR-465, Km 7. CEP 23890-000. Seropédica, Rio de Janeiro, Brazil.

<sup>3</sup> Centro Universitário de Lavras - UNILAVRAS, Laboratório de Zoologia.  
Rua Padre José Poggel, 506. CEP 37200-000. Centenário, MG, Brazil.

The genus *Hydromedusa* comprises two recognized species, *H. maximiliani* (Mikan, 1820) and *H. tectifera* Cope, 1869 from southern South America (Ernst and Barbour 1989, Fritz and Hava 2007). The geographic distribution of *Hydromedusa tectifera* is restricted to Argentina, Brazil, Bolivia, Paraguay, and Uruguay (Pritchard 1979; Ernst and Barbour 1989; Lema and Ferreira 1990; Fritz and Hava 2007). In Brazil, the range of this species was restricted to the São Paulo, Rio de Janeiro, Paraná, Santa Catarina, and Rio Grande do Sul states (Pritchard 1979; Ernst and Barbour 1989; Lema and Ferreira 1990; Lema et al. 2002; Ribas and Monteiro Filho 2002; Rocha et al. 2004; Santos et al. 2005; Ghizoni-Jr and Graipel 2005; Souza, 2005; Noleto et al. 2006; Pontes et al. 2006; Quintela et al. 2006; Fagundes and Bager 2007; Fritz and Hava 2007), in locations at sea level up to 1120 m above sea level (Ribas and Monteiro Filho 2002; Souza 2005; Pontes, et al. 2005; Quintela et al. 2006). According to Souza (2005) all records of this species are in the Atlantic rainforest biome. However, this species was recorded in the Pampa biome by Fagundes and Bager (2007).

On 26 July 2006, one juvenile of *H. tectifera* (Figure 1-2) (carapace length = 112.4 mm, body mass = 165 g) was hand-captured, photographed and released in the Ritópolis (21°00'02.42" S, 44°18'16.09" W, 1051 m above sea level), southeast of state of Minas Gerais, Brazil, inside in the *cerrado* biome.

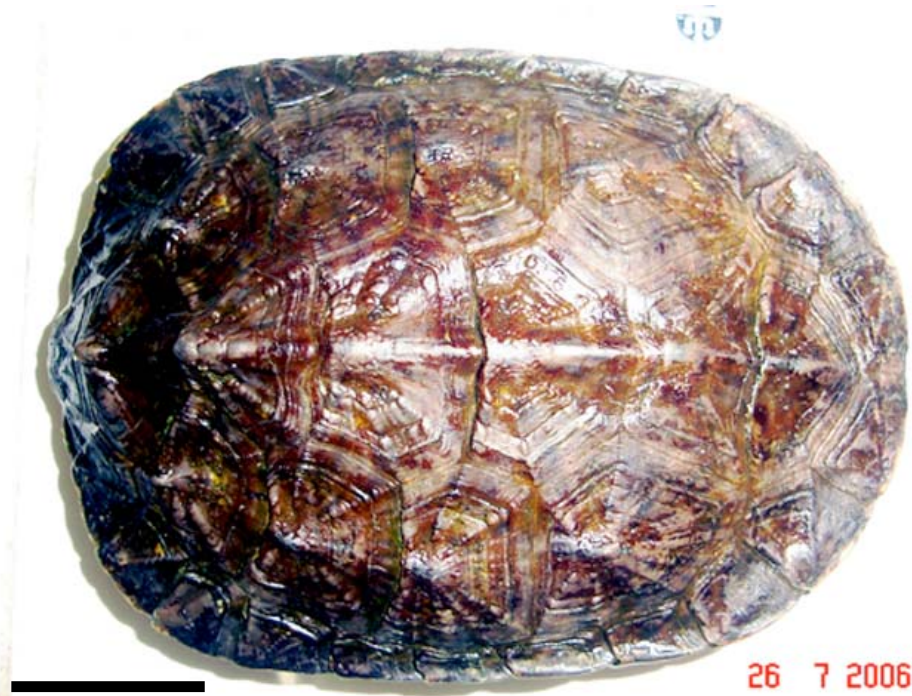


**Figure 1.** Ventral view of juvenile *H. tectifera* collected at the municipality of Ritópolis, Minas Gerais state (scale bar = 5 cm).

Collecting permits was authorized by Brazilian Institute of Environment and Renewable Natural Resources (*Instituto Brasileiro do Meio Ambiente e dos Recursos Naturais Renováveis* - IBAMA) (Proc. # 02015.010660/05-88).

The record here reported extend the known geographical distribution of *H. tectifera* ca. 210 km northwest from the nearest record in the municipality of Teresópolis, *Parque Nacional da Serra dos Órgãos* (22°30' S, 43°02' W), state of Rio de Janeiro (Pontes et al. 2006). Until the current study *H. tectifera* was considered as exclusive species of the Atlantic rainforest biome (Souza 2005), and this occurrence constitutes the first record of this species in the *Cerrado* biome, and in the state of Minas Gerais.

NOTES ON GEOGRAPHIC DISTRIBUTION



**Figure 2.** Dorsal view of carapace of juvenile *H. tectifera* collected at the municipality of Ritópolis, Minas Gerais state (scale bar = 3 cm).

**Acknowledgements**

We thank *Fundação de Amparo à Pesquisa do Estado de Minas Gerais* (FAPEMIG) for the financial support (# EDT-230/05).

**Literature cited**

- Ernst, C. H. and R. W. Barbour. 1989. *Turtles of the world*. Washington: Smithsonian Institution Press. 313 p.
- Fagundes, C. K. and A. Bager. 2007. Ecologia reprodutiva de *Hydromedusa tectifera* (Testudines: Chelidae) no sul do Brasil. *Biota Neotropica* 7(2): 179-184.
- Fritz, U. and P. Hava. 2007. Checklist of Chelonians of the World. *Vertebrate Zoology* 57(2): 149-368.
- Ghizoni-Jr, I. R. and M. E. Graipel. 2005. Capturas acidentais de vertebrados em estudos com pequenos mamíferos em Santa Catarina, sul do Brasil. *Biotemas* 18(1): 163-180.
- Lema, T. and M. T. S. Ferreira. 1990. Contribuição ao conhecimento dos Testudines do Rio Grande do Sul (Brasil) – Lista sistemática comentada (Reptilia). *Acta Biologica Leopoldensia* 12(1): 125-164.
- Lema, T., M. C. S. Costa, J. E. Dornelles and F. Abdalla. 2002. Os Répteis do Rio Grande do Sul - Atuais e Fósseis, Biogeografia. Ofidismo. 1ª ed. Porto Alegre: EPECE – PUCRS. 166 p.
- Noieto, R. B., D. L. Z. Kantek, A. C. Swarca, A. L. Dias, A. S. Fenocchio and M. M. Cestari. 2006. Karyotypic characterization of *Hydromedusa tectifera* (Testudines, Pleurodira) from the upper Iguaçu River (Paraná State, Brazil). *Genetics and Molecular Biology* 29(2): 263-266.
- Pontes, J. A. L., R. C. Pontes, D. Vrcibradic and J. P. Figueiredo. 2006. *Hydromedusa tectifera* (South American Snake-necked Turtle). Altitudinal record. *Herpetological Review* 37(4): 458.
- Pritchard, P. C. H. 1979. *Encyclopedia of turtles*. New York: T F H Publications Inc. 895 p.
- Quintela, F. M., D. Loebmann, and N. M. Gianuca. 2006. Répteis continentais do município de Rio Grande, Rio Grande do Sul, Brasil. *Biociências* 14(2): 180-188.
- Ribas, E. R. and E. L. A. Monteiro Filho. 2002. Distribuição e hábitat das tartarugas de água-doce (Testudines, Chelidae) do Estado do Paraná, Brasil. *Biociências* 10(2): 15-32.
- Rocha, C. F. D., H. G. Bergallo, J. P. Pombal-Junior, L. Geise, M. Van Sluys, R. Fernandes, and U.

**NOTES ON GEOGRAPHIC DISTRIBUTION**

Caramaschi. 2004. Fauna de anfíbios, répteis e mamíferos do Estado do Rio de Janeiro, Sudeste do Brasil. Publicações avulsas do Museu Nacional 104: 1-24.

Santos, T. G., K. A. Kopp, M. R. Spies, R. Trevisan, and S. T. Z. Cechin. 2005. Répteis do Campus da

Universidade Federal de Santa Maria, RS, Brasil. *Biota Neotropica* 5(1): 1-10.

Souza, F. L. 2005. Geographical distribution patterns of South American side-necked turtles (Chelidae), with emphasis on Brazilian species. *Revista Española de Herpetología* 19: 33-46, 2005.

Received May 2009

Accepted July 2009

Published online August 2009