

Phymaturus vociferator Pincheira-Donoso, 2004 (Squamata: Liolaemidae): new records and updated geographic distribution

Félix A. Urra,^{1,2,7} Hugo A. Díaz,³ Heiko Werning,⁴ Tobias Eisenberg⁵ & Jaime Troncoso-Palacios⁶

¹Programa de Anatomía y Biología del Desarrollo, Instituto de Ciencias Biomédicas (ICBM), Facultad de Medicina, Universidad de Chile, Casilla 7, Santiago, Chile

²Geroscience Center for Brain Health and Metabolism, Santiago, Chile, Casilla 7, Santiago, Chile

³Departamento de Ciencias Ecológicas, Facultad de Ciencias, Universidad de Chile, Casilla 653, Santiago, Chile

⁴Redaktion REPTILIA, Seestraße 101, 13353 Berlin, Germany

⁵Landesbetrieb Hessisches Landeslabor (LHL), Fachbereich Veterinärmedizin, Schubertstrasse 60, 35392 Giessen, Germany

⁶Programa de Biofísica y Fisiología, Facultad de Medicina, Universidad de Chile, Casilla 70005, Santiago, Chile

⁷Corresponding author. E-mail: felix.urr@qf.uchile.cl

Abstract. *Phymaturus vociferator* Pincheira-Donoso 2004 was known until now only from type locality, Laguna del Laja, Biobío Region, Chile. Here, we report new records in the vicinity of Termas de Chillán and extend this species' distribution 58.3 km north of its type locality.

Key words. Range extension; Termas de Chillán; Chillan Volcano; Biobío Region; lizard; South America; Chile

Phymaturus is a genus of viviparous and herbivorous lizards that currently contains 46 species, distributed in the highlands of Chile and Argentina, and Argentine Patagonia, and revealing the high species diversity (LOBO & QUINTEROS 2005a, MORANDO et al. 2013, LOBO et al. 2016, UETZ & HOŠEK 2017). In Chile, the distributional ranges of the 7 recognized *Phymaturus* species are scarcely known, possibly due to a lack of adequate sampling in difficult accessible localities of the Andean highlands.

Phymaturus vociferator Pincheira-Donoso, 2004, the southernmost Chilean species of its genus, is only known from its type locality, El Refugio (37°20' S, 071°18' W), Laguna del Laja, 1,700 m, Antuco, Octava Región Administrativa de Chile (= Biobío Region), Chile (PINCHEIRA-DONOSO 2004). Following PINCHEIRA-DONOSO (2004), *P. vociferator* is the only *Phymaturus* species that can emit sounds when threatened. This species is diagnosed by the combination of the following characters: (1) sides of neck, shoulders and post-shoulders area

black in males; (2) dorsum light brown with series of thick black crossbars in females; (3) absence of precloacal pores in females; (4) absence of large scales in the chest of the females; and (5) second chinshields separated in almost all specimens (PINCHEIRA-DONOSO 2004, TRONCOSO-PALACIOS & LOBO 2012).

In February 2014 and 2015, during fieldwork in the highlands of Chillán Volcano, which is 58.3 km north of the type locality at Laguna del Laja, individuals of *P. vociferator* were found at 4 new sites (Fig. 1): the volcanic rocks near to Termas de Chillán (36°53' S, 071°24' W, 1,895 m above sea level [a.s.l.]), Aguas Calientes Valley (36°54' S, 071°24' W, 1,993 m a.s.l.), Shangri-la Valley (36°51' S, 071°26' W, 1,876 m a.s.l.), and in the ruins of mountaineer shelter «Waldorf» (36°51' S, 071°26' W, 1,910 m a.s.l.) in Nevados del Chillán. Four specimens were collected under permit number 4468 issued by Servicio Agrícola y Ganadero (SAG) and deposited in Colección de Flora y Fauna Profesor Patricio Sánchez Reyes of Pontificia Universidad Católica de Chile (SSUC) (under the catalog numbers SSUC-Re 701, SSUC-Re 702, SSUC-Re 703 and SSUC-Re 704, Fig. 2). Measurements were taken with a GOLDTOOL digital caliper (0.01 mm precision) and scale counts under a stereomicroscope.

Individuals collected in the new localities exhibited the diagnostic characters (Table 1) of *P. vociferator* (see PINCHEIRA-DONOSO 2004), including vocalizations when they were manipulated. The identification was done by F. A. Urra (University

Table 1. Scale counts and measurements of *Phymaturus vociferator* from new localities and type locality. M = male, F = female, SCS = number of scales between the second chinshields, SVL = snout-vent length.*Data from Pincheira-Donoso 2004.

Specimen	Locality	Sex	Precloacal pores	SCS	SVL (mm)
SSUC-Re 703	Shangri-la valley	F	0	3	75.1
SSUC-Re 704	Shangri-la valley	M	8	3	90.8
SSUC-Re 701	Termas de Chillán	F	0	0	80.8
SSUC-Re 702	Aguas Calientes	M	11	1	89.8
<i>P. vociferator</i> *	Laguna del Laja, Antuco	M = 7, F = 5	6–11	3–5	80.3–100.7

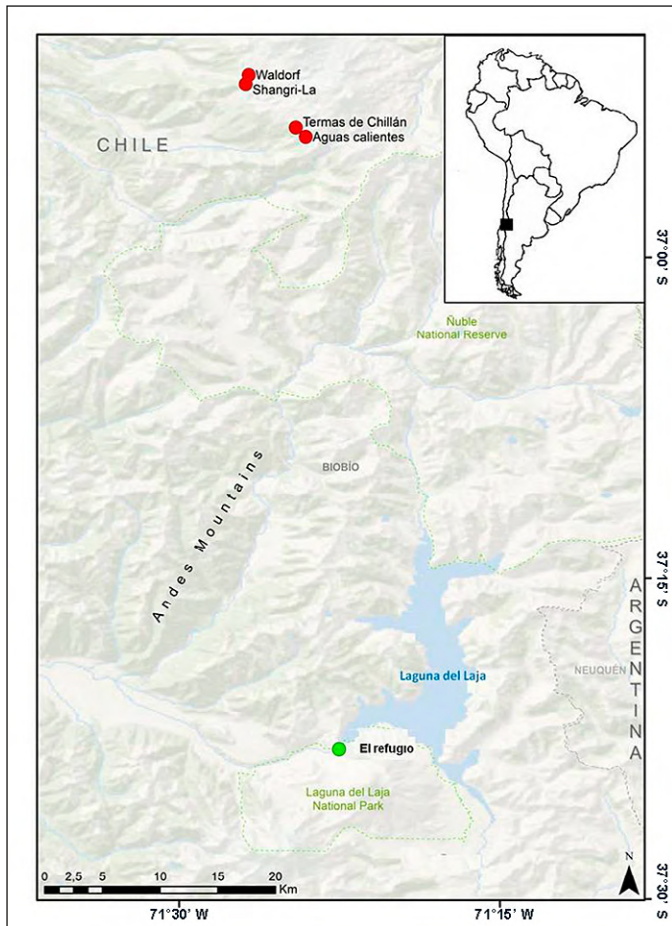


Figure 1. Distribution of *Phymaturus vociferator*, indicating the type locality “El Refugio” (green circles) and new localities (red circle): Termas de Chillán, Aguas Calientes, Shangri-lá valley and ruins of mountaineer shelter “Waldorf”.

of Chile) and J. Troncoso-Palacios (University of Chile). In the highlands of Chillán Volcano and Termas de Chillán (Fig. 3), *P. vociferator* was observed in volcanic outcrops (Termas de Chillán and road to Aguas Calientes) or Andean vegas (Shangri-la) in sympatry with the lizard *Liolaemus chillanensis* Müller & Hellmich, 1932 and the snake *Tachymenis chilensis* (Schlegel, 1837).

Some studies have reported the presence of *Phymaturus* lizards from Termas de Chillán without a formal assignment of species (LOBO & QUINTEROS 2005b, EISENBERG & WERNING 2012, LOBO et al. 2016). LOBO & QUINTEROS (2005b) suggested that this population may correspond to an undescribed species without major conclusions on its identity in a recent taxonomic review of the *P. palluma* group (LOBO et al. 2016) and EISENBERG & WERNING (2012) named this population as *Phymaturus* cf. *palluma* in a report on the reproduction and biology of these specimens in captivity. These latter specimens were examined by us (see Appendix), confirming that our record of *P. vociferator* in Termas de Chillán corresponds to the same population previously reported for that location (Fig. 4). On the other hand, a recent book also suggested the presence of *P. vociferator* in localities near our records (Reserva Nacional Ñuble and Reserva Nacional Los Huemules de Niblinto) but did not show photographic documentation or collect specimens (DAMANGEL 2016). Taking into account these details, we show



Figure 2. Specimens of *Phymaturus vociferator* from (A) Termas de Chillán, (B) Aguas Calientes, (C) Shangri-lá, (D) ruins of mountaineer shelter “Waldorf” (SSUC-Re 701, SSUC-Re 702, SSUC-Re 703 and SSUC-Re 704, respectively).

formally that these Termas de Chillán populations correspond to *P. vociferator*, a species previously known only from only its

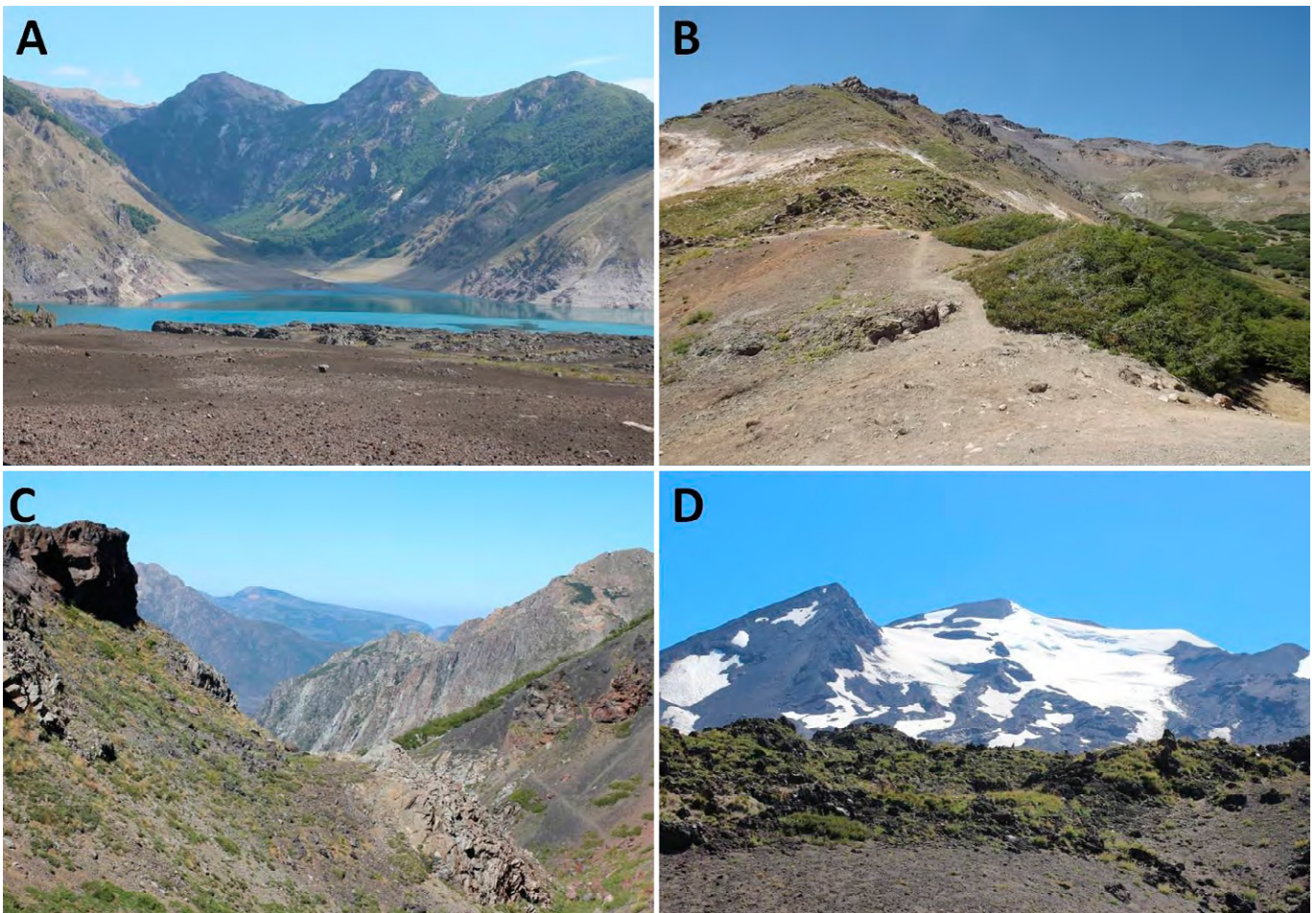


Figure 3. Habitats recorded for *Phymaturus vociferator*. **A.** Laguna del Laja. **B.** vicinity of Chillán Volcano, Termas de Chillán. **C.** Shangri-la Valley. **D.** vicinity of ruins of mountaineer shelter "Waldorf" in Nevados del Chillán.

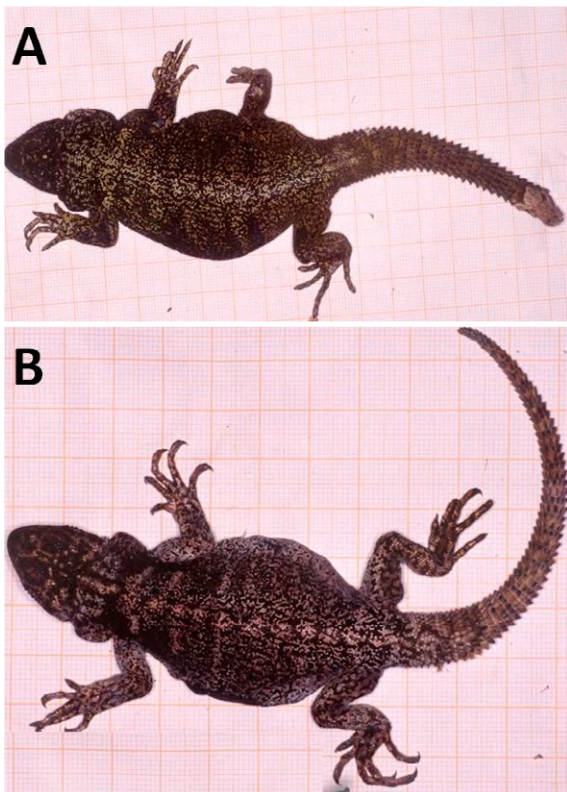


Figure 4. Specimens reported as *Phymaturus cf. palluma* from Termas de Chillán by EISENBERG & WERNING (2012). **A.** male. **B.** female.

type locality. Our new records expand the latitudinal distribution of this species by 58.3 km to the north (in a straight line), which may have important implications for the conservation policies of this endemic species.

ACKNOWLEDGEMENTS

We thank P. Zavala (Pontificia Universidad de Católica de Chile, Santiago, Chile) and Gunther Köhler (Senckenberg Research Institute, Frankfurt, Germany) for allowing access to the SSUC and SMF collections, respectively as well as G. Fuentes and A. Fuentes for their field assistance. J. Troncoso-Palacios thanks M. Penna (Universidad de Chile) for his support. F. A. Urrea thanks FONDECYT postdoctoral fellowship #3170813.

LITERATURE CITED

- DAMANGEL, D. 2016. Reptiles en Chile. Fauna Nativa Ediciones. 619 pp.
- EISENBERG, T. & H. WERNING. 2012. *Phymaturus cf. palluma* in captivity: observations on its reproduction and biology. *Salamandra* 48: 198–206.
- LOBO, F., D.A. BARRASSO, H. THOMAS & N.G. BASSO. 2016. On the evolution and diversification of an Andean clade of reptiles: combining morphology and DNA sequences of the *palluma* group (Liolaemidae: *Phymaturus*). *Zoological Journal of the Linnean Society* 176: 648–673. <https://doi.org/10.1111/zoj.12335>

- LOBO, F. & S. QUINTEROS. 2005a. Taxonomic studies of the genus *Phymaturus* (Iguania: Liolaemidae): Redescription of *Phymaturus patagonicus* Koslowky 1898, and revalidation and redescription of *Phymaturus spurcus* Barbour 1921. *Journal of Herpetology* 39: 533–540. <https://doi.org/10.1670/170-04A.1>
- LOBO, F. & S. QUINTEROS. 2005b. A morphology-based phylogeny of *Phymaturus* (Iguania: Liolaemidae) with the description of four new species from Argentina. *Papéis Avulsos de Zoologia* 45: 143–177. <https://doi.org/10.1590/S0031-10492005001300001>
- MORANDO, M., L.J. AVILA, C.H.F. PEREZ, M.A. HAWKINS & J.W. SITES. 2013. A molecular phylogeny of the lizard genus *Phymaturus* (Squamata, Liolaemini): implications for species diversity and historical biogeography of southern South America. *Molecular Phylogenetics and Evolution* 66: 694–714. <https://doi.org/10.1016/j.ympev.2012.10.019>
- MÜLLER, L. VON & HELLMICH, W. 1932. Beiträge zur Kenntnis der Herpetofauna Chiles. IV. *Liolaemus monticola*, ein weiterer neuer Rassenkries aus den Hochanden Chiles. *Zoologischer Anzeiger* 99: 177–192.
- PINCHEIRA-DONOSO, D. 2004. Una nueva especie del género *Phymaturus* (Iguania: Tropicoduridae: Liolaemini) del Centro-Sur de Chile. *Multequina* 13: 57–70.
- SCHLEGEL, H. 1837. Essai sur la physionomie des serpens. Partie générale: xxviii + 251 pp. + partie descriptive: 606 + xvi pp. La Haye: J. Kips, J. HZ. et W. P. van Stockum.
- TRONCOSO-PALACIOS, J. & F. LOBO. 2012. A new species of *Phymaturus* (Iguania: Liolaemidae) of the *palluma* group from Central Chile. *Cuadernos de Herpetología* 26: 69–78.
- UETZ, P. & J. HOŠEK. 2017. The reptile database. Accessed at <http://www.reptile-database.org>, 28 January 2017.

Authors' contributions. FAU, HAD, HW, TE and JTP collected the data, FAU wrote the text and FAU and JTP made the analysis of specimens examined.

Received: 5 May 2016
Accepted: 3 May 2017
Academic editor: Ivan Nunes

APPENDIX

Specimens examined

Abbreviations. MNHNCL: Museo Nacional de Historia Natural de Chile, Santiago, Chile; MRC: Museo Regional de Concepción, Concepción, Chile; MZUC: Museo de Zoología de la Universidad de Concepción, Concepción, Chile; SMF: Senckenberg Museum Frankfurt, Senckenberg Research Institute, Frankfurt, Germany; SSUC: Colección de Flora y Fauna, Profesor Patricio Sánchez Reyes of Pontificia Universidad Católica de Chile, Santiago, Chile.

***Phymaturus vociferator*.** MNHNCL-3852, El Refugio, Laguna del Laja, Antuco, BíoBío Region, Chile, Martín S. coll., January 12, 2000. MNHNCL-3854, El Refugio, Laguna del Laja, Antuco, BíoBío Region, Chile; December 18, 2001. MNHNCL-3853, 3855, Antuco, BíoBío Region, Chile. MRC 20-23, Antuco, Chile; C. Valdovinos-Zarges coll. (undated). MZUC 19510, 19513, 19517, 19518 (2 specimens), 19540, Laja National Park; Habit E. and P. Victoriano colls.; March, 1987. SSUC-Re 683, West shore of the Laja Lagoon, Troncoso-Palacios J., F. Urta and H. Díaz colls; January 7, 2014. SSUC-Re 701, Termas de Chillán. SSUC-Re 702, Aguas Calientes. SSUC-Re 703 and SSUC-Re 704, Shangri-la valley; Troncoso-Palacios, J., H. Diaz and F. Urta colls.; December 29, 2015. SMF 82554-82557, Termas de Chillán, Heiko Werning coll.; June 14, 2003. SMF 83675-83678, Termas de Chillán, Heiko Werning coll.; February 12, 2005. SMF 91358- 91361, SMF 91373, Termas de Chillán, Heiko Werning coll.; September 05, 2010. SMF 95212, SMF 95213, Termas de Chillán, Heiko Werning coll.; August 3, 2012.