

Calomys tener (Winge, 1887) (Rodentia: Cricetidae: Sigmodontinae): Filling gaps

Fernando Marques Quintela¹, Everton Conceição da Silveira², Diana Gonçalves Dellagnese² and Cristina Vargas Cademartori^{2*}

1 Universidade Federal do Rio Grande do Sul – UFRGS, Instituto de Biociências, Programa de Pós-graduação em Biologia Animal. Av. Bento Gonçalves, 9500. CEP 91501-970. Porto Alegre, RS, Brazil.

2 Centro Universitário La Salle Unilasalle, Mestrado em Avaliação de Impactos Ambientais, Laboratório de Manejo de Fauna. Av. Victor Barreto, 2288. CEP 92010-000. Canoas, RS, Brazil.

* Corresponding author. E-mail: cristinacademartori@unilasalle.edu.br

ABSTRACT: *Calomys tener* is a widely distributed species in Brazil. Herein we report the second record of *C. tener* in state of Rio Grande do Sul about 80 km northwestwards from the previous southernmost known limit in Brazil.

DOI: 10.15560/10.3.650

The genus *Calomys* comprises ca. 13 recognized species of small sigmodontine rodents distributed mainly in dry vegetation areas of South America (Bonvicino *et al.* 2010). Seven of these species occur in Brazilian territory (Mattevi *et al.* 2005; Paglia *et al.* 2012), ranging throughout the Cerrado, Caatinga, Pantanal, Pampa and Atlantic Forest morphoclimatic domains (Bonvicino *et al.* 2003; 2010; Paglia *et al.* 2012). *Calomys tener* is a wide distributed species, known from localities throughout the Brazilian states of Tocantins and Mato Grosso in the north, to Rio Grande do Sul, southern Brazil (Haag *et al.* 2007) and the Argentine province of Misiones (Massoia 1988), whereas the known western and eastern limits comprehend eastern Bolivia (Anderson 1997) and the Brazilian state of Espírito Santo, respectively (Bonvicino *et al.* 2010).

On 01 August 2011 we captured an adult female of *Calomys tener* (Figures 1 and 2), with the third molar erupted and molar occlusal surface indicating an advanced level of wear, according to Kunz *et al.* (1996) and Cordeiro-Estrela *et al.* (2008), in an altered grassland area during a small mammal survey conducted in *Banhado Grande* locality, municipality of Viamão, northern Rio Grande do Sul Coastal Plain (30°00'42" S, 50°57'54" W; 33 m a.s.l.) (Figure 3). The specimen was deposited in the mammalian collection of the *Museu de Ciências Naturais La Salle, Centro Universitário La Salle, Canoas, Rio Grande do Sul* (MCN-MAM 42).

The field expeditions were carried out monthly from September 2010 to August 2011 during three consecutive nights. For sampling small mammals we used 90 pitfall traps and 90 wire traps distributed in three transect lines. In each transect there were 30 trapping stations spaced 20 m from the next which consisted, each one, by a pitfall (20 L bucket) and a wire trap (14x14x30 cm or 20x20x40 cm). The wire traps were baited with slices of fresh corn covered with a mixture of peanut butter, sardine and vanilla essence. The total trapping effort amounted to 5,584 trap-nights. Throughout the study we captured 51

individuals of *Calomys tener* in pitfalls and wire traps. Other small mammals captured in sympatry were: *Calomys laucha* (Fischer, 1814) (n=9), *Deltamys kempi* Thomas, 1917 (n=13), *Holochilus brasiliensis* (Desmarest, 1819) (n=1), *Mus musculus* Linnaeus, 1758 (n=9), *Necomys lasiurus* (Lund, 1840) (n=1) and *Oligoryzomys flavescens* (Waterhouse, 1837) (n=47). The identification of these specimens was based on morphological characters. Collection was authorized by *Instituto Chico Mendes de Conservação da Biodiversidade* (process number 24673-2) and these are also deposited in the mammalian collection of the *Museu de Ciências Naturais La Salle, Centro Universitário La Salle, Canoas, Rio Grande do Sul* (see Appendix 2).

A fragment of 890 bp of Cytochrome b gene (*cyt b*) from MCN – MAM 42 was sequenced and the sequence identity was first investigated by using BLAST (Basic Local Alignment Tool) (Altschul *et al.* 1990) in order to observe its similarity levels with other sequences deposited in the GenBank. We also performed a Neighbor-Joining (NJ) analysis in MEGA5 (Tamura *et al.* 2011), which included the *cyt b* sequence from one specimen here surveyed and



FIGURE 1. *Calomys tener* (adult female, MCN-MAM 42) from *Banhado Grande*, municipality of Viamão, Rio Grande do Sul, Brazil. Picture by Diana Gonçalves Dellagnese.



FIGURE 2. Dorsal, ventral and lateral views of the skull and mandible of *Calomys tener* (adult female, MCN-MAM 42) from Banhado Grande, municipality of Viamão, Rio Grande do Sul, Brazil. Pictures by Eduardo Coelho. Scale bar = 10 mm.

specimens from other 10 recognized species of *Calomys* generated in the studies of Salazar-Bravo *et al.* (2001; 2002) and Almeida *et al.* (2007), obtained from GenBank (Figure 4; Appendix 1). The specimen here surveyed grouped with the specimen of *C. tener* from Goiás, Central Brazil (Almeida *et al.* 2007) with a high level of bootstrap support (100%). The new *cyt b* sequence was deposited in GenBank (access number: JX975467). Kimura 2-parameter (K2P) evolutionary distances between *Banhado Grande* specimen and sequences from the specimens utilized in NJ analysis are shown in Table 1. Cranial measurements (Table 2) were within the range presented by Bonvicino *et al.* (2003) for *C. tener*, except by the length of diastema (LD) and breadth of rostrum (BRO). The specimen presented tawny dorsal pelage, lighter on the face; the venter was lighter, but hairs gray-based and with color limits with dorsum less conspicuous when compared to sympatric *C. laucha*. White hairs behind ears also distinguished these two species in the region, being a conspicuous characteristic in *C. laucha* and less conspicuous in *C. tener*.

This is the second record of *Calomys tener* for the state of Rio Grande do Sul. Although it not extends its distribution, we confirm the presence of this species in a region approximately 80 km northwestwards from the locality of Quintão, the previous southernmost known limit in Rio Grande do Sul (Haag *et al.* 2007). Quintão (30°24' S and 50°16' W – the coordinates provided in Haag *et al.* 2007 are erroneous) is located in the coastal zone of municipality of Palmares do Sul, which is completely inserted in Pampa biome (MMA/IBAMA, 2010). The physiognomy in this area is characterized mainly by coastal grasslands and dunes. On the other hand, the municipality of Viamão is located in the southern border of Atlantic Forest biome, which is also in agreement with the habitat of occurrence cited for the species (Musser and Carleton 2005; Leite and Patterson 2008).

Calomys species are morphologically very similar, being the cytogenetic analysis and DNA sequences the most

appropriate methods for species identification (Almeida *et al.* 2007; Haag *et al.* 2007). *Calomys laucha* presents 2n=62-64 and FN=68-72 while the karyotype of *C. tener* is characterized by 2n=66 and FN=66-70 (Salazar-Bravo *et al.* 2001; Almeida *et al.* 2007; Haag *et al.* 2007; Bonvicino *et al.* 2010). The identification of *C. tener* specimens from Quintão was based on karyotype and *cyt b* sequences (Haag *et al.* 2007) as well as the occurrence of *C. laucha* in Rio Grande do Sul, known from Taim Ecological Station [32°32' S and 52°32' W – the coordinates cited in Haag *et al.* (2007) are erroneous, correctly cited in Mattevi *et al.* (2005)] in southern Coastal Plain, Pampa biome, and from a transitional area between Pampa and Atlantic Forest in Viamão (this study). Another record of *C. laucha* is based only on karyotype data from Faxinalzinho (27°20' S and 52°40' W), northern Meridional Plateau, in Atlantic Forest biome (Badzinski *et al.* 2012).

Although the high local abundance of *Calomys tener* obtained in the present study, it may represent an uncommon species in Rio Grande do Sul considering the capture effort accumulated on a period of ten

TABLE 1. Evolutionary distances (K2P) between *Calomys tener* MCN-MAM 42 from Banhado Grande, municipality of Viamão, Rio Grande do Sul, and *Calomys* specimens utilized in Neighbour-Joining (NJ) analysis (see Figure 4), based on 890 bp of Cytochrome b gene.

	MCN-MAM 42
<i>C. callosus</i>	16.01
<i>C. expulsus</i>	19.16
<i>C. hummelincki</i>	19.51
<i>C. laucha</i>	16.36
<i>C. lepidus</i>	18.17
<i>C. musculus</i>	17.04
<i>C. sorellus</i>	16.38
<i>C. tener</i>	1.27
<i>C. tocantinsi</i>	16.64
<i>C. venustus</i>	16.25

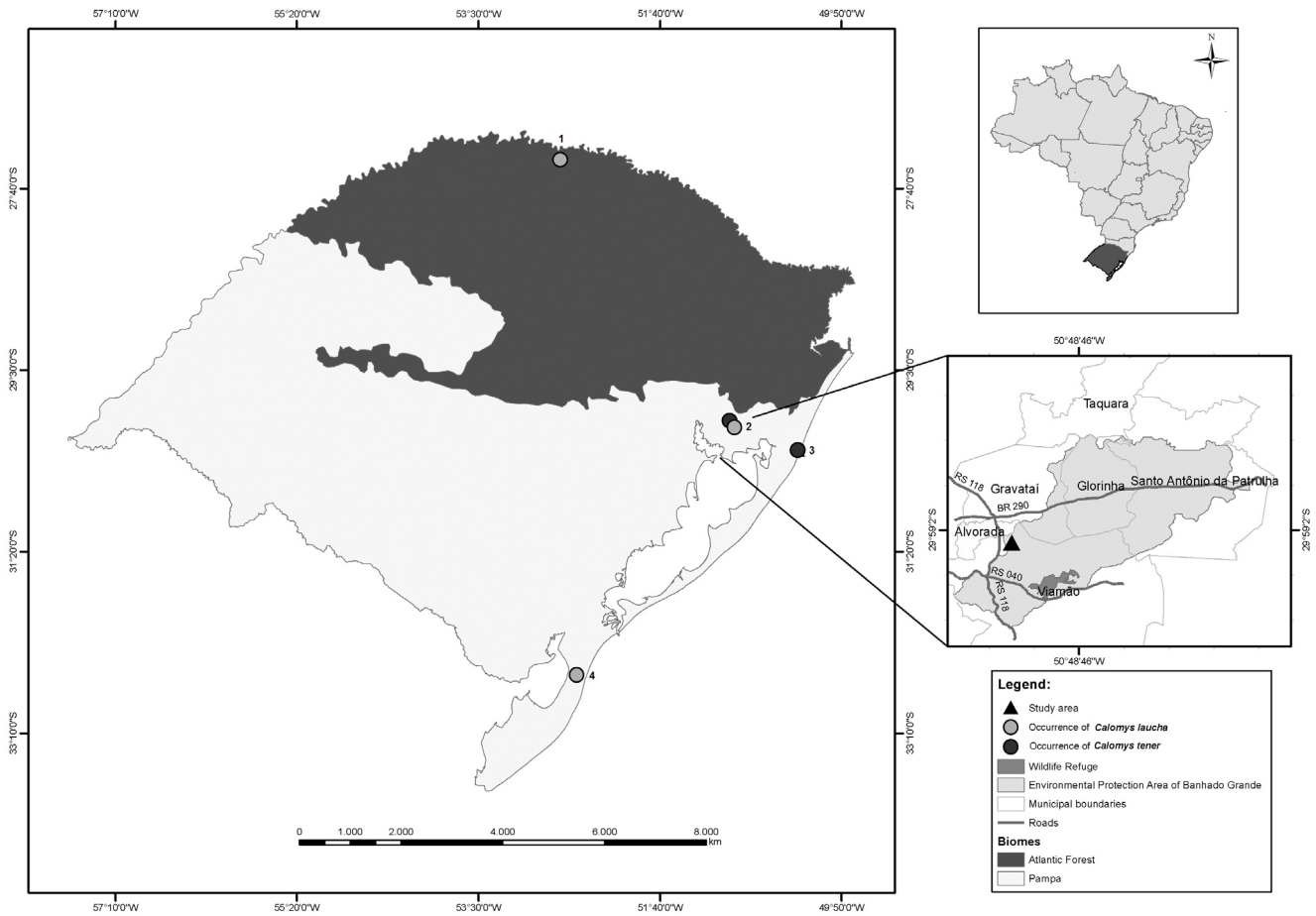


FIGURE 3. New records of *Calomys tener* and selected records of *Calomys laucha* from Rio Grande do Sul, Brazil. In the larger map the biome limits follows MMA/IBAMA (2010), in the inset map, the boundaries of wildlife refuge, environmental protection area and municipalities are shown (based on SEMA 2013). Localities: 1. Faxinalzinho RS (Badzinski et al. 2012), 2. Banhado Grande RS (this study), 3. Quintão RS (Haag et al. 2007), 4. Taim RS (Haag et al. 2007).

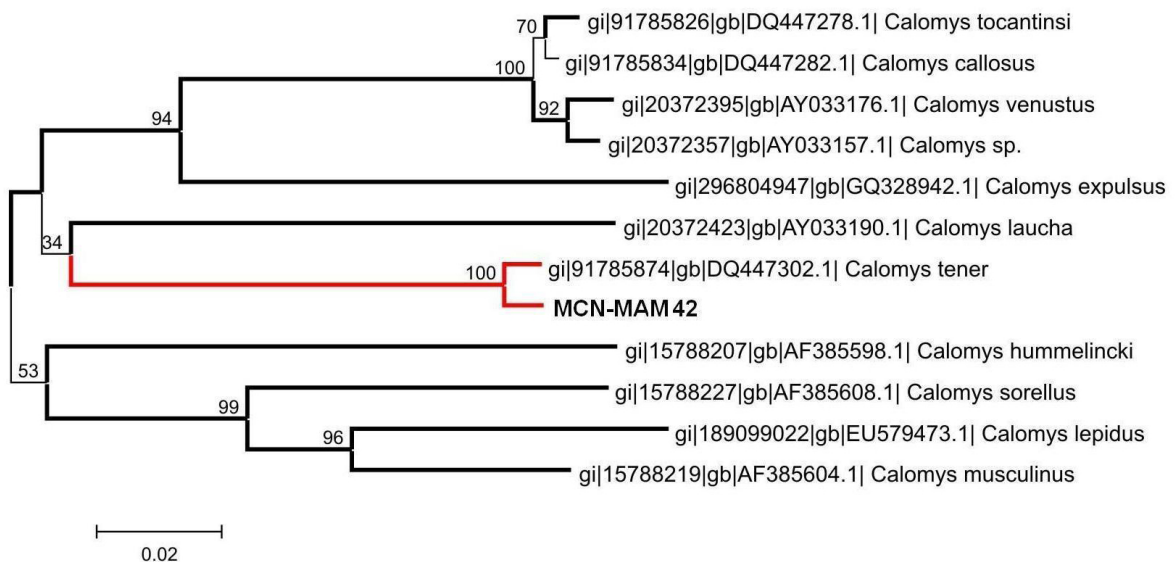


FIGURE 4. Neighbor-Joining tree based on 890 bp of cytochrome b sequences of *Calomys* specimens. MCN-MAM 42 is the specimen of *C. tener* from Banhado Grande, municipality of Viamão, Rio Grande do Sul, and the other specimens were downloaded from GenBank (See Appendix 1). Bar indicates substitutions per site.

years of small mammal surveys conducted in different physiognomies of the state (e.g. Cademartori et al. 2002; 2004; Dalmagro and Vieira 2005; Iob and Vieira 2008; Quintela et al. 2012; 2013; Sponchiado et al. 2012) and the record in only two localities until now (Haag et al. 2007 and this study). *Calomys laucha*, on the other hand, seems to be a common species in

southern coastal dune systems (e.g. Camargo et al. 2006; Haag et al. 2007; Quintela et al. 2013), with one record that may represents its northernmost limit of distribution in a shrubby area in the north region of the state (Badzinski et al. 2012). Since this is the first record of sympatry between these two morphologically similar species in the genus, the real distribution limits

in the state of both species should be investigated and also its representativeness in the distinct vegetation physiognomies in order to better understand the biogeography of these still poorly known species in southern Brazil.

TABLE 2. Cranial measurements (in mm) of *Calomys tener* adult female, MCN-MAM 42, from Banhado Grande, municipality of Viamão, Rio Grande do Sul. For measurements definitions see Bonvicino et al. (2003).

GSL	22.0	BM1	0.9
CIL	19.5	RL	8.1
BOC	5.1	BRO	3.7
LD	4.7	ORL	7.6
PB	3.7	LIB	3.4
M1M	4.5	ZB	11.4
LIF	4.5	BB	9.6
BIF	1.4	CH	7.3
LM	3.4	BZP	2.3

ACKNOWLEDGMENTS: We are grateful to Fabrício Bertuol and Gislene Gonçalves for lab support, to Regis Waskow and Diego Medeiros for the map, to Eduardo Coelho for skull pictures and to the team that helped us with field work. We also thank CNPq (process number 550922/2010-5) and Carbonífera Metropolitana for research grants related with the project “Study on environmental indicators and patterns of space use by small rodents in altered grasslands of Environmental Protection Area of Banhado Grande, Viamão RS: subsidies for conservation and restoration programs”.

LITERATURE CITED

- Almeida, F.C., C.R. Bonvicino and P. Cordeiro-Estrela. 2007. Phylogeny and temporal diversification of *Calomys* (Rodentia, Sigmodontinae): implications for the biogeography of an endemic genus of the open/dry biomes of South America. *Molecular Phylogenetics and Evolution* 42: 449–466 (doi: 10.1016/j.ympev.2006.07.005).
- Altschul, S.F., W. Gish, W. Miller, E.W. Myers and D.J. Lipman. 1990. Basic local alignment search tool. *Journal of Molecular Biology* 215: 403–410 (doi: 10.1016/S0022-2836(05)80360-2).
- Anderson, S. 1997. Mammals of Bolivia: taxonomy and distribution. *Bulletin of the American Museum of Natural History* 231: 1–652.
- Badzinski, C., D. Galiano and J. R. Marinho. 2012. Mammalia, Rodentia, Cricetidae, *Calomys laucha* (Fischer, 1814): distribution extension in Southern Brazil. *Check List* 8(2): 264–266 (<http://www.checklist.org.br/getpdf?NGD164-11>).
- Bonvicino, C.R., J.A. Oliveira and R. Gentile. 2010. A new species of *Calomys* (Rodentia: Sigmodontinae) from Eastern Brazil. *Zootaxa* 2336: 19–35 (<http://www.mapress.com/zootaxa/2010/f/zt02336p035.pdf>).
- Bonvicino, C.R., J.F.S. Lima and F.C. Almeida. 2003. A new species of *Calomys* Waterhouse (Rodentia: Sigmodontinae) from the Cerrado of Central Brazil. *Revista Brasileira de Zoologia* 20(2): 301–307 (<http://www.scielo.br/pdf/rbzoool/v20n2/v20n2a21.pdf>).
- Cademartori, C.V., M.E. Fábian and J.O. Menegheti. 2004. Variações na abundância de roedores (Rodentia, Sigmodontinae) em duas áreas de floresta ombrófila mista, Rio Grande do Sul, Brasil. *Revista Brasileira de Zoociências* 6(2): 147–167 (<http://zoociencias.ufjf.emnuvens.com.br/zoociencias/article/view/185/173>).
- Cademartori, C.V., R.V. Marques, S.M. Pacheco, L.R.M. Baptista and M. Garcia. 2002. Roedores ocorrentes em Floresta Ombrófila Mista (São Francisco de Paula, Rio Grande do Sul) e a caracterização de seu hábitat. *Comunicações do Museu de Ciências e Tecnologia da PUCRS, Série Zoologia* 15(1): 61–86.
- Camargo, C.R., E.P. COLARES and A.M.L. CASTRUCI. 2006. Seasonal pelage color change: news based on a South American rodent. *Anais da Academia Brasileira de Ciências* 78(1): 77–86 (<http://www.scielo.br/pdf/aabc/v78n1/a09v78n1.pdf>).
- Cordeiro-Estrela, P., M. Baylac, C. Denys and J. Polop. 2008. Combining geometric morphometrics and pattern recognition to identify interspecific patterns of skull variation: case study in sympatric Argentinian species of the genus *Calomys* (Rodentia: Cricetidae: Sigmodontinae). *Biological Journal of the Linnean Society* 94: 365–378 (doi: 10.1111/j.1095-8312.2008.00982.x).
- Dalmagro, A.D. and E.M. Vieira. 2005. Patterns of habitat utilization of small rodents in an area of Araucaria forest in Southern Brazil. *Austral Ecology* 30: 353–362 (doi: 10.1111/j.1442-9993.2005.01447.x).
- Haag, T., V.C. Muschner, L.B. Freitas, L.F.B. Oliveira, A.R. Langguth and M.S. Mattevi. 2007. Phylogenetic relationships among species of the genus *Calomys* with emphasis on South American lowland taxa. *Journal of Mammalogy* 88(3): 769–776 (doi: 10.1644/05-MAMM-A-319R1.1).
- Iob, G. and E.M. Vieira. 2008. Seed predation of *Araucaria angustifolia* (Araucariaceae) in the Brazilian Araucaria Forest: influence of deposition site and comparative role of small and ‘large’ mammals. *Plant Ecology* 198: 185–196 (doi: 10.1007/s11258-007-9394-6).
- Kunz, T.H., C. Wemmer and V. Hayssen. 1996. Sex, age and reproductive condition of mammals; pp. 279–290, in: D.E. Wilson, F.R. Cole, J.D. Nichols, R. Rudran and M.S. Foster (ed.). *Measuring and monitoring biological diversity: standard methods for mammals*. Washington: Smithsonian Institution Press.
- Leite, Y. and B. Patterson. 2008. *Calomys tener*. *IUCN Red List of Threatened Species*. Version 2012.1. Accessible at <http://www.iucnredlist.org/>. Captured on 24 September 2012.
- MMA/IBAMA, Ministério do Meio Ambiente/Instituto Brasileiro do Meio Ambiente e dos Recursos Naturais Renováveis. 2010. *Monitoramento do desmatamento nos biomas brasileiros por satélite. Monitoramento do bioma Pampa*. Accessible at http://www.mma.gov.br/estruturas/sbf_chm_rbbio/_arquivos/relatorio_tcnico_monitoramento_pampa_2008_2009_72.pdf. Captured on 14 April 2013.
- Massoia, E. 1988. Presas de *Tyto alba* em Campo Ramón, Departamento Oberá, Provincia de Misiones. *Boletín Científico, Asociación para La Protección de La Naturaleza* 7: 4–16.
- Mattevi, M.S., T. Haag, L.F.B. Oliveira and A.R. Langguth. 2005. Chromosome characterization of Brazilian species of *Calomys* Waterhouse, 1837 from Amazon, Cerrado and Pampa domains (Rodentia, Sigmodontinae). *Arquivos do Museu Nacional* 63(1): 175–181.
- Musser, G.G. and M.D. Carleton. 2005. Superfamily Muroidea; pp. 894–1531, in: D.E. Wilson and D.M. Reeder (ed.). *Mammal species of the world. A taxonomic and geographic reference*. Volume II. Baltimore: The John Hopkins University Press.
- Nascimento, F.F., L.G. Pereira, L. Geise, A.M.R. Bezerra, P.S. D’Andrea and C.R. Bonvicino. 2011. Colonization process of the Brazilian Common Vesper Mouse, *Calomys expulsus* (Cricetidae, Sigmodontinae): a biogeographic hypothesis. *Journal of Heredity* 102(3): 260–268 (<http://jhered.oxfordjournals.org/content/102/3/260.full.pdf+html>).
- Paglia, A.P., G.A.B. Fonseca, A.B. Rylands, G. Herrmann, L.M.S. Aguiar, A.G. Chiarello, Y.L.R. Leite, L.P. Costa, S. Siciliano, M.C.M. Kierulff, S.L. Mendes, V. C. Tavares, R.A. Mittermeier, and J.L. Patton. 2012. Lista Anotada dos Mamíferos do Brasil/ Annotated Checklist of Brazilian Mammals. *Occasional Papers in Conservation Biology* 6: 1–76 (http://www.conservacao.org/publicacoes/files/annotated_checklist_of_brazilian_mammals_2nd_edition.pdf).
- Quintela, F.M., M.B. Santos, A.U. Christoff and A. Gava. 2012. Pequenos mamíferos não-voadores (Didelphimorphia, Rodentia) em dois fragmentos de matas de restinga de Rio Grande, Planície Costeira do Rio Grande do Sul. *Biota Neotropica* 12(1): 261–266 (<http://www.scielo.br/pdf/bn/v12n1/v12n1a21.pdf>).
- Quintela, F.M., B.I. Gonçalves, G.E. Trindade, M.B. Santos and A.M. Tozetti. 2013. Pequenos mamíferos não-voadores (Didelphimorphia, Rodentia) em campos litorâneos do extremo sul do Brasil. *Biota Neotropica* 13(4): 284–289 (<http://www.scielo.br/pdf/bn/v13n4/1676-0603-bn-13-04-284.pdf>).
- Salazar-Bravo, J., J.W. Drago, D.S. Tinnin and T.L. Yates. 2001. Phylogeny and evolution of the Neotropical rodent genus *Calomys*: inferences from mitochondrial DNA sequence data. *Molecular Phylogenetics and Evolution* 20: 173–184 (doi: 10.1006/mpev.2001.0965).
- Salazar-Bravo, J., J.W. Drago, M.D. Bowen, C.J. Peters, T.J. Ksiazek and T.L. Yates. 2002. Natural nidality in Bolivian hemorrhagic fever and the systematic of the reservoir species. *Infection, Genetics and Evolution* 1(19): 191–199 (doi: 10.1016/S1567-1348(02)00026-6).
- SEMA, Secretaria Estadual de Meio Ambiente. 2013. *Unidades de Conservação Estaduais. Área de Proteção Ambiental do Banhado Grande*. Accessible at <http://www.sema.rs.gov.br/>. Captured on 5 October 2013.
- Sponchiado, J., G.L. Melo and N.C. Cáceres. 2012. Habitat selection by small mammals in Brazilian Pampas biome. *Journal of Natural History* 46(21–22): 1321–1335 (doi: 10.1080/00222933.2012.655796).
- Tamura, K., D. Peterson, N. Peterson, G. Stecher, M. Nei, S. Kumar. 2011. MEGA5: Molecular Evolutionary Genetics Analysis using Maximum Likelihood, Evolutionary Distance, and Maximum Parsimony Methods. *Molecular Biology and Evolution* 28: 2731–2739 (<http://mbe.oxfordjournals.org/content/28/10/2731.full.pdf+html>).

RECEIVED: November 2012

ACCEPTED: March 2014

PUBLISHED ONLINE: July 2014

EDITORIAL RESPONSIBILITY: Ana Paula Carmignotto

APPENDIX 1. Data of *Calomys* specimens utilized in Neighbor-Joining (NJ) analysis of cytochrome b sequences.

SPECIES	VOUCHER / TISSUE	GENBANK ACCESSION NUMBER	LOCALITY/COUNTRY	NUMBER OF BP	REFERENCE
<i>Calomys callosus</i>	LBCE4474	DQ447282	Aquidauana, Mato Grosso do Sul, Brazil	1143	Almeida et al. (2007)
<i>Calomys expulsus</i>	LBCE8748	GQ328942	Luziânia, Goiás, Brazil	1143	Nascimento et al. (2012)
<i>Calomys hummelincki</i>	not informed	AF385598	Falcón, Isiro, Venezuela	1143	Salazar-Bravo et al. (2001)
<i>Calomys laucha</i>	not informed	AY33190	Tarija, Estancia Bolivar, Bolivia	1143	Salazar-Bravo et al. (2002)
<i>Calomys lepidus</i>	MVZ171562	EU579473	Puno, Peru	1143	Hanson and Bradley (unpublished)
<i>Calomys musculus</i>	NK23706	AF385604	Tarija, Bolivia	1143	Salazar-Bravo et al. (2001)
<i>Calomys sorellus</i>	not informed	AF385608	Arequipa, Caylloma, Peru	1143	Salazar-Bravo et al. (2001)
<i>Calomys</i> sp.	not informed	AY033157	Beni, Bolivia	1143	Salazar-Bravo et al. (2002)
<i>Calomys tener</i>	CRB2382	DQ447302	Mimoso de Goiás, Goiás, Brazil	1143	Almeida et al. (2007)
<i>Calomys tocantinsi</i>	ARB55	DQ447278	PARNA Araguaia, Tocantins, Brazil	1143	Almeida et al. (2007)
<i>Calomys venustus</i>	not informed	AY033176	Santiago del Estero, Argentina	1143	Salazar-Bravo et al. (2002)

APPENDIX 2. List of voucher specimens from Banhado Grande, RS deposited in the mammalian collection of the Museu de Ciências Naturais La Salle, Centro Universitário La Salle, Canoas RS.

Calomys laucha (G. Fischer, 1814) - MCN-MAM 43; *Deltamys kempi* Thomas, 1917 - MCN-MAM 45; *Holochilus brasiliensis* (Desmarest, 1819) - MCN-MAM 48; *Mus musculus* Linnaeus, 1758 - MCN-MAM 47; *Necomys lasiurus* (Lund, 1840) - MCN-MAM 51; *Oligoryzomys flavescens* (Waterhouse, 1837) - MCN-MAM 46.