

## Karyotype of three *Lonchophylla* species (Chiroptera, Phyllostomidae) from Southeastern Brazil

Brunna Almeida<sup>1,2</sup>, Roberto Leonan Morim Novaes<sup>3</sup>, Marcia Aguiueiras<sup>1</sup>,  
Renan de França Souza<sup>4</sup>, Carlos Eduardo Lustosa Esbérard<sup>5</sup>, Lena Geise<sup>1</sup>

**1** Universidade do Estado do Rio de Janeiro, Departamento de Zoologia, Rua São Francisco Xavier 524, 20550-013, Maracanã, Rio de Janeiro, RJ, Brazil **2** Museu Nacional do Rio de Janeiro, Departamento de Vertebrados, Quinta da Boa Vista s/n, 20940-040, São Cristóvão, Rio de Janeiro, RJ, Brazil **3** Fundação Oswaldo Cruz, Campus Fiocruz da Mata Atlântica, Estrada Rodrigues Caldas 3400, 22713375, Taquara, Rio de Janeiro, RJ, Brazil **4** Universidade do Estado do Rio de Janeiro, Departamento de Ecologia, Rua São Francisco Xavier 524, 20550-013, Maracanã, Rio de Janeiro, RJ, Brazil **5** Universidade Federal Rural do Rio de Janeiro, Instituto de Biologia, Km 47 da antiga estrada Rio-São Paulo, 23851-970, Seropédica, RJ, Brazil

Corresponding author: Brunna Almeida ([brunninhaas@gmail.com](mailto:brunninhaas@gmail.com))

---

Academic editor: N. Bulatova | Received 21 September 2015 | Accepted 12 November 2015 | Published 22 January 2016

<http://zoobank.org/C72A6BF9-075D-4084-AB69-704B35E152A3>

---

**Citation:** Almeida B, Novaes RLM, Aguiueiras M, Souza RF, Esbérard CEL, Geise L (2016) Karyotype of three *Lonchophylla* species (Chiroptera, Phyllostomidae) from Southeastern Brazil. *Comparative Cytogenetics* 10(1): 109–115. doi: 10.3897/CompCytogen.v10i1.6646

---

### Abstract

*Lonchophylla* Thomas, 1903 is a Neotropical bat genus that comprises 12 species, with little cytogenetic information available. Here we present the description of the karyotype of three species collected in Southeastern Brazil. *Lonchophylla bokermanni* Sazima, Vizotto & Taddei, 1978, *Lonchophylla dekeyseri* Taddei, Vizotto & Sazima, 1983, and *Lonchophylla peracchii* Dias, Moratelli & Esberard, 2013 showed the same diploid number  $2n = 28$  and the same autosomal fundamental number  $FNa = 50$ , in both *L. bokermanni* and *L. peracchii*. We observed that the karyotypes were also cytogenetically similar when we compared the studied species with other species within the same genus. It is therefore not possible to differentiate the species using only karyotypes with conventional staining. However, this information increases the knowledge of the genus and can be one more important character for a better phylogenetic comprehension of this taxon.

## Keywords

Karyology, chromosomes, Bokermann's Nectar Bat, Atlantic Forest, Cerrado, Endangered species, Lonchophyllinae, range extension

## Introduction

In recent years, new species and a genus of the subfamily Lonchophyllinae were described: *Lonchophylla peracchii* Dias, Moratelli & Esberard, 2013, *L. inexpectata* Moratelli & Dias, 2015, and *Hsunycteris* Parlos, Timm, Swier, Zeballos & Baker, 2014 (Dias et al. 2013, Parlos et al. 2014, Moratelli and Dias 2015). For the description of bat species, morphological and morphometric characteristics are usually employed, but the use of other tools such as cytogenetic analysis can provide essential information for evolutionary relationships of bats (Varella-Garcia and Taddei 1989, Garcia and Pêsoa 2010), as already seen for rodents, for example (Romanenko and Volobouev 2012). Although there are few cytogenetic data for Lonchophyllinae, they were nevertheless informative for systematic rearrangements of this taxon (see Parlos et al. 2014).

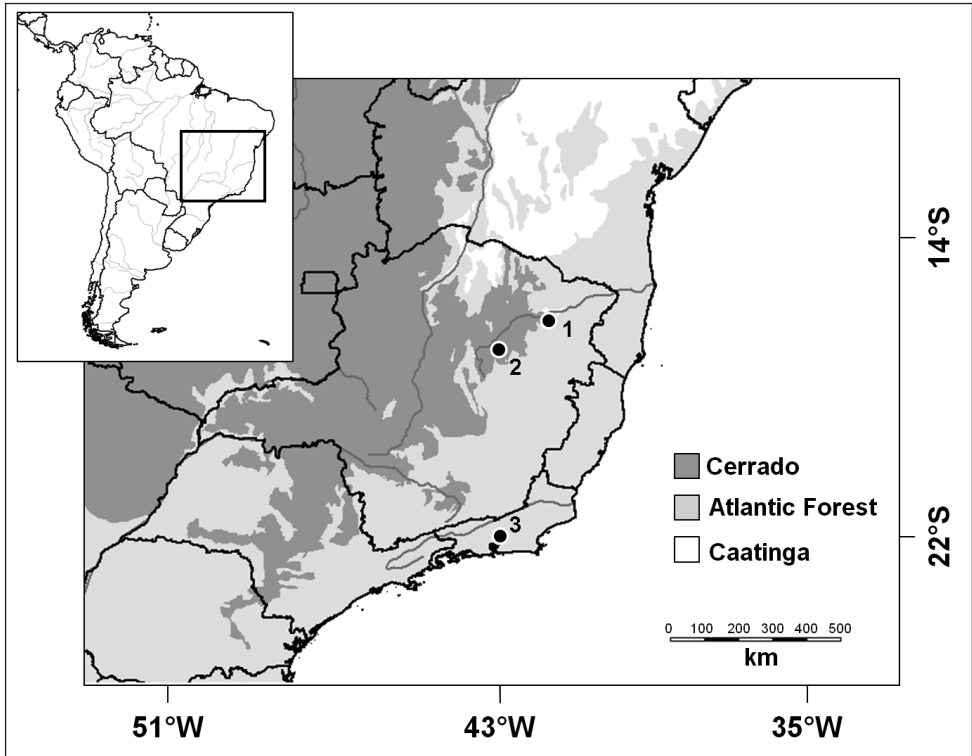
In Brazil, there are records for five species of this genus: *Lonchophylla bokermanni* Sazima, Vizotto & Taddei, 1978, *Lonchophylla dekeyseri* Taddei, Vizotto & Sazima, 1983, *Lonchophylla inexpectata*, *Lonchophylla mordax* Thomas, 1903 and the new species, *Lonchophylla peracchii* mentioned above. There are karyotype data available until now for the two congeneric taxa from outside the country, *Lonchophylla robusta* Miller, 1912 and *Lonchophylla concava* Goldman, 1914 (Parlos et al. 2014), but no cytogenetic data were available for Brazilian species. Therefore, this study is the first to describe the karyotype of *L. bokermanni*, *L. dekeyseri* and *L. peracchii*.

## Material and methods

Five individuals of *Lonchophylla* were collected and four were karyotyped: one adult female (MN79997) and one adult male of *L. bokermanni* (MN81467), one adult female of *L. dekeyseri* (MN80002) and one adult male of *L. peracchii* (MN81468).

*L. bokermanni* was captured in Fazenda Santa Cruz, Diamantina municipality (18°16'11"S; 43°23'04"W, 1.129 m a.s.l.), in the Vale do Jequitinhonha, Minas Gerais State (Figure 1). The locality has a Cerrado vegetation classified as arboreal savanna with enclaves of deciduous forest (IBGE 2012). Sampling occurred in March 2011 using 13 to 15 mist-net (9 × 3 m, 35 mm mesh), which remained open in the first six hours after the sunset for six consecutive nights.

*L. dekeyseri* was captured in Fazenda Ilha, Itinga municipality (16°38'05"S; 41°50'54"W, 240 m a.s.l.), Vale do Jequitinhonha, Minas Gerais State (Figure 1). The locality is in the Cerrado, with vegetation classified as open savanna in transition with Dry Forest (IBGE 2012). The sampling procedures were performed in March 2012,



**Figure 1.** Localities of *Lonchophylla* species records: **1** Itinga, Minas Gerais **2** Dimantina, Minas Gerais **3** Magé, Rio de Janeiro.

using 12 to 16 mist-nets (9 × 3 m, 35 mm mesh) that remained open in the first six hours after the sunset for seven consecutive nights.

*L. peracchii* was captured in Reserva Particular do Patrimônio Natural El Nagual, Magé municipality (22°32'55"S; 43°03'20"W, 197 m a.s.l), Rio de Janeiro State (Figure 1). The locality is in the Atlantic Forest, with vegetation classified as Ombrophilous Dense Forest (IBGE 2012). Sampling occurred in August 2012 using two mist-nets (12 × 3 m, 30 mm mesh) that remained open throughout night period (± 12 hours) for two consecutive nights.

Chromosomes in metaphases were obtained through *in vitro* bone marrow culture grown in Dulbecco's MEM with 10% fetal bovine serum and colchicine for 2 hours, following by an incubation in KCl 0.075M solution at 37 °C by 30 minutes, centrifuged, fixed in Carnoy solution (methanol: acetic acid, 3:1). The fixation step was repeated three times. Preparation was done by dropping one drop by distance onto clean microscope slides and air-dried. Conventional staining with Giemsa 5% was used to observe diploid number (2n) and Fundamental Number of autosomal arms (FN<sub>a</sub>) and chromosome morphology variation. This analysis was carried out using an

optic photomicroscope (Nikon Eclipse 50i), in a 1,000 increase – lenses of 100 plus 10 ocular lenses.

Captures were authorized by IBAMA (1785/89-IBAMA) and SISBIO (4156/95-46 in the Vale of Jequitinhonha and 3893-1/28717 in Magé).

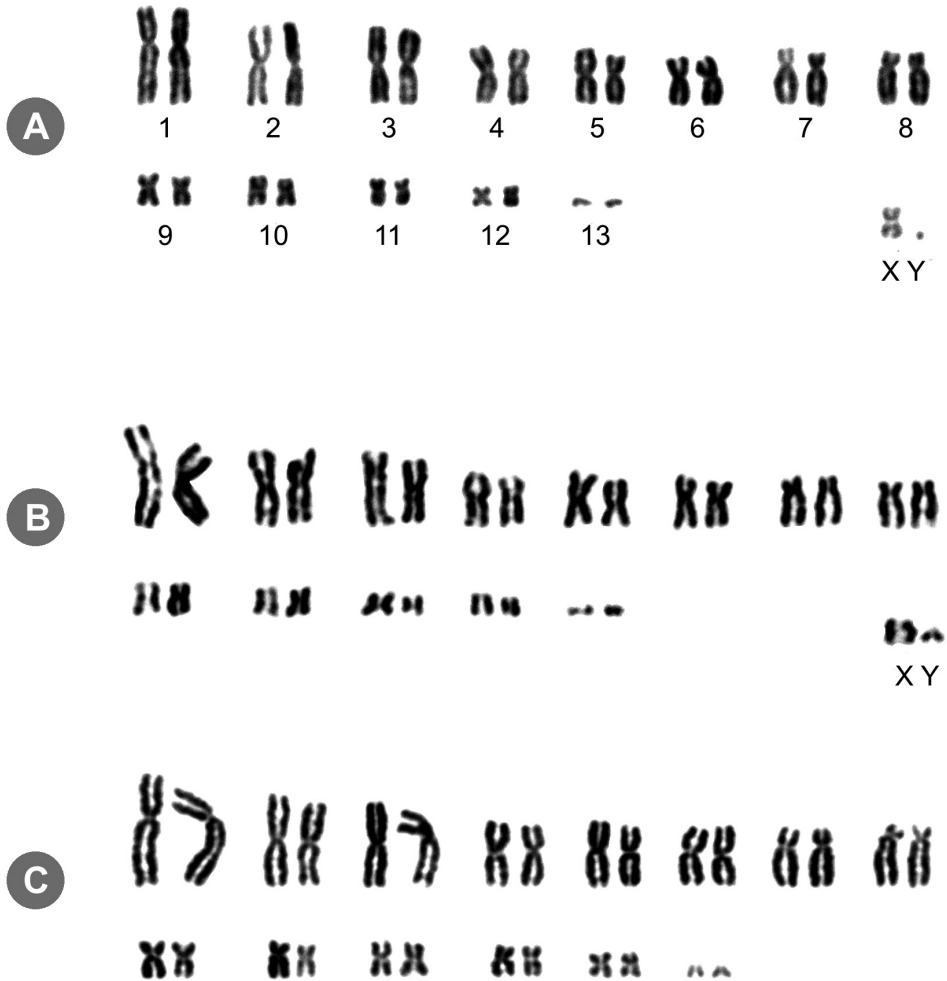
## Results and discussion

All three species showed the same diploid number  $2n = 28$  and an autosomal fundamental number  $FNa = 50$  was observed (Figure 2). The autosomal complement of males *L. bokermanni* and *L. peracchii* consists of 12 pairs of meta/submetacentrics varying from large to small, and a pair of small acrocentric chromosomes ( $FNa = 50$ ). Two size classes of autosomal chromosomes can be observed – the eight first are all large chromosomes, and in the second row (Figure 2A–C), with smaller ones, including four metacentric and the smallest chromosome of the karyotype, the only acrocentric ones. The X chromosome is a medium sized metacentric and the Y is a minute acrocentric, smaller than the last pair of autosomal complement. Similarly, the karyotype of *L. dekeyseri* can be characterized but the identification of the sex chromosome pair was impossible in the sole collected specimen which was a female.

Karyotype comparison is considered as an important tool to establish phylogenetic relationships and as a taxonomic tool to confirm some species identities (Baker 1970, Silva et al. 2006, Urdampilleta et al. 2013). However, the resolution power of the cytogenetic method is not the same for all groups. Sometimes, it is necessary to analyze as many as possible the species' karyotypes (Garcia and Pessoa 2010). In bats, the few available published karyotype data from South America (Moratelli and Morielle-Versute 2007) make it difficult to propose, using such kind of information, new or different taxonomic arrangements and a better comprehension of the systematics of Neotropical bats (Garcia and Pessoa 2010).

Three new karyotypes here described for *L. bokermanni*, *L. dekeyseri* and *L. peracchii* are similar to those known for *L. robusta* (Baker 1973, Baker 1979) and *L. concava* (Parlos et al. 2014). A species currently allocated to the genus *Hsunycteris* and previously described as *L. thomasi*, presents different karyotype compositions:  $2n = 30$ ,  $FNa = 34$ ;  $2n = 32$ ,  $FNa = 34, 38$  and  $40$ ;  $2n = 36$ ,  $FNa = 48$ . Additionally, this species also presented an increased number of acrocentric chromosomes, whereas in other *Lonchophylla* species, only a pair of small acrocentric is observed (Pair 13 in Figure 2) (Parlos et al. 2014).

The karyotype conservatism in Microchiroptera has been observed in other studies (Varella-Garcia et al. 1989, Sousa and Araújo 1990) which well corroborate with our results. Even if species distinction is not evident for representatives of the *Lonchophylla* genus through the conventional chromosome characteristics, the generic separation of *Lonchophylla* – *Hsunycteris* is supported by their different karyotypes.



**Figure 2.** Giemsa-stained karyotypes of **A** *Lonchophylla bokermanni* 2n = 28, FNa = 50 (male, MN81467) **B** *Lonchophylla peracchii* 2n = 28, FNa = 50 (male, MN81468) and **C** *Lonchophylla dekeyseri* 2n = 28 (female, MN80002).

## Acknowledgments

Julia L Luz, Maíra SM Godoy, Luciana M Costa, Luciana G Pereira, Edvandro A Ribeiro and André C Siqueira helped in the fieldwork; Luana Azamor helped in laboratory work; to FAPERJ for IC Grant to Brunna Almeida and for scholarship for Renan F. Souza; and CNPq for financial support. Lena Geise has CNPq and Uerj/Prociencia fellowship.

## References

- Baker RJ (1970) Karyotypic trends in bats. In: Wimsatt WA (Eds) Biology of bats. Academic Press Inc, New York, 65–97. doi: 10.1016/b978-0-12-758001-2.50007-1
- Baker RJ (1973) Comparative cytogenetics of the New World leaf-nosed bats (Phyllostomatidae). *Periodicum Biologorum* 75: 37–45.
- Baker RJ (1979) Karyology. In: Baker RJ, Jones K, Carter DC (Eds) Biology of bats of the New World family Phyllostomatidae, Part III. Special Publications of the Museum of Texas Tech University, 107–155.
- Dias D, Peracchi AL (2008) Quirópteros da Reserva Biológica do Tinguá, estado do Rio de Janeiro, sudeste do Brasil (Mammalia: Chiroptera). *Revista Brasileira de Zoologia* 25(2): 333–369. doi: 10.1590/s0101-81752008000200023
- Dias D, Esbérard CEL, Moratelli R (2013) A new species of *Lonchophylla* (Chiroptera, Phyllostomidae) from the Atlantic Forest of southeastern Brazil, with comments on *L. boker-manni*. *Zootaxa* 3722(3): 347–360. doi: 10.11646/zootaxa.3722.3.4
- Garcia JP, Pessôa LM (2010) Karyotypic composition of bats from the Brazilian nuclear power plants, state of Rio de Janeiro. *Chiroptera Neotropical* 16(1): 617–628.
- Geise L (2014) Procedimentos genéticos iniciais na captura e preparação de mamíferos. In: Reis NR, Peracchi AL, Rossaneis BK, Fregonezi MN (Eds) Técnicas de estudos aplicadas aos mamíferos silvestres brasileiros. Technical Books Editora, Rio de Janeiro, 221–235.
- Griffiths TA, Gardner AL (2008) Subfamily Lonchophyllinae. In: Gardner AL (Ed.) Mammals of South America, volume 1: marsupials, xenarthrans, shrews, and bats. University of Chicago Press, Chicago and London, 244–255.
- IBGE (2012) Manual técnico da vegetação brasileira. Second Edition. Instituto Brasileiro de Geografia e Estatística, Rio de Janeiro, 274 pp.
- Moratelli R, Dias D (2015) A new species of nectar-feeding bat, genus *Lonchophylla*, from the Caatinga of Brazil (Chiroptera, Phyllostomidae). *ZooKeys* 514: 73–91. doi: 10.3897/zookeys.514.10013
- Moratelli R, Morielle-Versute E (2007) Métodos e aplicações da citogenética na taxonomia de morcegos brasileiros. In: Reis NR, Peracchi AL, Pedro WA, Lima IP (Eds) Morcegos do Brasil. Editora da UEL, Londrina, 197–228.
- Parlos JA, Timm RM, Swier VJ, Zeballos H, Baker RJ (2014) Evaluation of paraphyletic assemblages within Lonchophyllinae, with description of a new tribe and genus. *Occasional Papers of the Museum of Texas Tech University* 320: 1–23.
- Ribeiro NAB, Nagamachi CY, Pieczarka JC, Rissino JD, Nevez ACB, Gonçalves ACO, Marques-Aguiar S, Assis MFL, Barros RMS (2003) Cytogenetic analysis in species of the subfamily Glossophaginae (Phyllostomidae, Chiroptera) supports a polyphyletic origin. *Caryologia* 56(1): 85–96. doi: 10.1080/00087114.2003.10589311
- Romanenko SA, Volobouev V (2012) Non-Sciuromorph rodent karyotypes in evolution. *Cytogenetic and Genome Research* 137: 233–245. doi: 10.1159/000339294
- Sikes RS, Gannon WL, The Animal Care and Use Committee of the American Society of Mammalogists (2011) Guidelines of the American Society of Mammalogists for the use of wild mammals in research. *Journal of Mammalogy* 92(1): 235–253. doi: 10.1644/10-MAMM-F-355.1

- Silva MJ, Patton JL, Yassuda-Yonenaga Y (2006) Phylogenetic relationships and karyotype evolution in the sigmodontine rodent *Akodon* ( $2n = 10$  and  $2n = 16$ ) from Brazil. *Genetics and Molecular Biology* 29(3): 469–474. doi: 10.1590/S1415-47572006000300012
- Sousa MJ, Araújo MCP (1990) Conservative pattern of the G-bands and diversity of C-banding patterns and NORs in Stenodermatinae bats (Chiroptera-Phyllostomatidae). *Revista Brasileira de Genética* 13(2): 255–268.
- Urdampilleta JD, Coulleri JP, Ferrucci MS, Forni-Martins ER (2013) Karyotype evolution and phylogenetic analyses in the genus *Cardiospermum* L. (Paullinieae, Sapindaceae). *Plant Biology* 15(5): 868–881. doi: 10.1111/j.1438-8677.2012.00679.x
- Varella-Garcia M, Morielle-Versute E, Taddei VA (1989) A survey of cytogenetic data on Brazilian bats. *Revista Brasileira de Genética* 12: 761–793.