

Karyological studies in ten species of *Citrus* (Linnaeus, 1753) (Rutaceae) of North-East India

Marlykinti Hynniewta¹, Surendra Kumar Malik², Satyawada Rama Rao¹

1 Plant Biotechnology Laboratory, Department of Biotechnology and Bioinformatics, North-Eastern Hill University, Shillong (Meghalaya) India **2** Tissue Culture & cryopreservation Unit, National Bureau of Plant Genetic Resource, New Delhi

Corresponding author: Satyawada Rama Rao (srrao22@yahoo.com)

Academic editor: Ilya Gavrilov | Received 12 July 2011 | Accepted 27 July 2011 | Published 9 November 2011

Citation: Hynniewta M, Malik SK, Rao SR (2011) Karyological studies in ten species of *Citrus* (Linnaeus, 1753) (Rutaceae) of North-East India. *Comparative Cytogenetics* 5(4): 277–287. doi: 10.3897/CompCytogen.v5i4.1796

Abstract

Ten *Citrus* (Linnaeus, 1753) species of North-East India have been karyo-morphologically analysed. All studied species had $2n=18$ chromosomes without any evidence of numerical variation. All the chromosomes were found to be of metacentric and sub-metacentric in all the species; the morphology of the chromosomes showing size difference only. Symmetrical karyotype which does not have much difference in the ratio of longest to shortest chromosome in all the species was observed. Three species, *C. grandis* (Osbeck, 1757), *C. reticulata* (Blanco, 1837) and *C. medica* (Linnaeus, 1753) are identified as true basic species from asymmetry studies of karyotypes as they reflect on the primitive nature of their genomes. *C. indica* (Tanaka, 1937) occupies a special taxonomic position within the genus *Citrus* as a progenitor for other cultivated species.

Keywords

Citrus, karyotype, genetic variability, asymmetry index

Introduction

The genus *Citrus* is economically very important and is known for its juice and pulp throughout the world. The genus belongs to the family Rutaceae that includes 162 species (Tanaka 1977) and is grown in tropical and subtropical areas of the world. *Citrus* is the third most important fruit crop of India with an estimated production of 4.2 million tons from an area of 0.48 m ha (Bathla et al. 2001). Mandarin (*Citrus reticu-*

lata Blanco, 1837), sweet orange (*C. sinensis* Osbeck, 1757), acid lime (*C. aurantifolia* Swingle, 1913) and lemon (*C. limon* Osbeck, 1765) are the major cultivated species of the country. Other species that are cultivated to a lesser extent include seedless lime (*C. latifolia* Tanaka, 1937), pummelo (*C. grandis* Osbeck, 1757), grapefruit (*C. paradisi* Macfadyen, 1930) and belladikithuli (*C. maderaspatana* Tanaka, 1937). In India, there are 30 species of *Citrus* (Singh and Chadha 1993) of which at least nine species are available throughout India, while 17 species are confined to North-Eastern India. It is also reported that nine species are found in the southern region of India, six species in the north-western India while a single species is observed in central region of the country (Singh and Chadha 1993). The north-east region of India is known for its rich diversity in *Citrus* germplasm, reflected in 17 species, 52 cultivars and 7 probable natural hybrids which are found in the region (Bhattacharya and Dutta 1956). A recent study on genetic resources of *Citrus* from north-eastern India indicated an increase in the number of species up to 23 besides one subspecies and 68 varieties (Sharma et al. 2004). *Citrus* plants growing in deep forests undisturbed by biotic factors have also been reported from the region, thus bestowing this area with a special status of “treasure house” of *Citrus* germplasm and also highlighted the lack of our knowledge about the same (Sharma et al. 2004).

The south-east Asia, Australia and the intervening island-areas between Australasia and Central Africa and the north-eastern region of India along with neighbouring China (Mc Phee 1967, Swingle and Reece 1967) are thought to be important centres of origin of *Citrus* and related genera. Many *Citrus* species are believed to be endemic to the region. Seven Indian *Citrus* species fall under the category of endangered species which include *C. indica* Tanaka, 1937, *C. macroptera* Montrouzier, 1960, *C. latipes* Tanaka, 1937, *C. assamensis* Dutta et Bhattacharya, 1956, *C. ichangensis* Swingle, 1913, *C. megaloxycarpa* Lushington, 1910 and *C. rugulosa* Tanaka, 1937 (Malik et al. 2006). Two species, *C. indica* and *C. macroptera*, need special and immediate attention for conservation due to their endemism and high degree of threat perception.

South and western hills of Meghalaya in the North-East are reported to have maximum diversity for *C. reticulata*, *C. grandis*, *C. limon* and *C. aurantifolia*. These are extensively cultivated for their taste, good pulp and have very high market demand. *C. indica* is supposed to be the most primitive species and perhaps the progenitor of cultivated *Citrus* (Malik et al. 2006) and is locally known as Memang Narang. It is a rare species which is confined to the Tura ranges of West Garo Hills (Upadhyay and Sundriyal 1998). *C. macroptera* is reported to grow in the Khasi and Garo Hills of Meghalaya, North Cachar, Karimganj and Karbi-Anglong districts of Assam and the states of Mizoram, Tripura and Manipur (Bhattacharya and Dutta 1956, Sharma et al. 2004). *C. megaloxycarpa* locally known as ‘Sishupal’ is a rare species, confined to the Jampui Hill regions of Mizoram and *C. latipes* shows maximum occurrence in West Khasi Hills of Meghalaya.

The relationship between the species within the genus *Citrus* has been made complicated due to combination of factors such as wide cross compatibility, repeated cross pollination and apomixis. Wide hybridization in *Citrus* affects karyotype stability

(Khan 2007). Hybridization has probably played an important role in the evolution of most *Citrus* species. Scora (1975) and Barrett and Rhodes (1976) suggested that there are only three basic species of *Citrus*, that are considered true ones within subgenus *Citrus* while other species within this subgenus are hybrids derived from the three true species or by intercrossing with species of subgenus *Papeda* (Swingle, 1943) or other closely related genera. Wild relatives of cultivated *Citrus* species can be a major source of genetic variation for utilization in breeding programs aimed at crop improvement through transfer of disease resistance or other desirable agronomic traits.

The cytogenetical characterization of *Citrus* accession could help in the identification of a particular genomic variant, or for the detection of true hybrids in breeding program, as well as for studies of karyotypes evolution of the group (Guerra et al. 1997). Despite the great genetic diversity and economic significance attached to several species of *Citrus*, attempts to understand the genetic basis of variation is not forthcoming. The available information is scant and fragmented. A quick perusal of the published literature indicates different chromosome number reports in several species such as $2n=18$ or $2n=27$ in *C. aurantifolia* (Longley 1925; Krug and Bacchi 1943) and $2n=18, 27, 36$ in *C. limonia* Osbeck, 1757 (Frost 1925a, b) are case examples. Therefore there is an urgent need to undertake comprehensive cytogenetical approaches to define the existing genetic variation at inter- and intra-specific levels in the genus *Citrus*. The present investigations are an attempt to conduct karyomorphological studies on 10 species of *Citrus* from North-East India.

Material and methods

The plant material used in the present investigation was collected from various region of North-East India and the vouchers specimens have been submitted to National Herbarium of Crop Plants, National Bureau of plant Genetics Resources, New Delhi (Table 1). The plants were grown in green house of Plant Biotechnology Laboratory, Department of Biotechnology and Bioinformatics of North-Eastern Hill University, Shillong. For each species, wherever possible, a minimum of five individuals and more than one population were analyzed. For obtaining actively growing root tips, plants were raised in earthen pots and the root tips of about (0.5–1.0 cm) long were excised. All the root tips were pre-treated with 8-hydroxyquinoline (0.002M) for three hours at room temperature, fixed in ethanol-acetic acid (v/v, 3:1) and subsequently stored at 4 °C until required. For slide preparation, the root tips were washed twice in distilled water, hydrolysed in 5N HCl for 20 min at room temperature. The hydrolysed root tips were washed in distilled water and stained in Feulgen stain for 45 min. The root tips were subsequently squashed in 1% acetocarmine. The micro-photographs were taken using Jenoptik CCD camera (Germany) attached to labomed LX 400 brightfield microscope. At least five clear preparations of chromosome complements of each species were analyzed for the karyotypes. Idiograms were prepared from photo-micrographs by cutting out individual chromosomes, arranging them in descending order of their

Table 1. *Citrus* species used in the present investigation.

Sl. No.	Species	Common Name	Collection No.	Source
Subgenus Citrus				
1	<i>C. reticulata</i>	Khasi Mandrin	CR-9	Pynursla
2	<i>C. jambhiri</i>	Rough lemon	CJ-6	Wahkhen
3	<i>C. sinensis</i>	Sweet orange	CS-2	Shillong
4	<i>C. limon</i>	Assam Lemon	MD/33	Mizoram
5	<i>C. grandis</i>	Pummelo	CG-7	Ri Bhoi
6	<i>C. limetta</i>	Sweet limes	CLe-1	Shillong
7	<i>C. indica</i>	Indian wild orange	SO1	Nokrek, Garo hills
8	<i>C. medica</i>	Citron	CMi-2	Wahkhen
Subgenus Papeda				
9	<i>C. macroptera</i>	Melanesian Papeda	CMa-1	Cherrapunjee
10	<i>C. latipes</i>	Khasi Papeda	Clt-2	Upper Shillong

length and matching on the basis of morphology. The standard method of chromosome classification (Levan et al. 1964) of metacentric (V), submetacentric (L), subtelocentric (J) and telocentric (I) based on the arm ratio of 1:1, >1:1<1:3, >1:3<1:0 and 1:0 respectively, was used for comparison. The degree of symmetry was estimated as per the scheme proposed by Paszko (2006).

Results

The data related to chromosome complements/karyotypes have been presented in Table 2 and illustrated in Fig. 1 and 2 and it is amply clear that among the 10 species of *Citrus* presently studied, two species namely *C. jambhiri* Lushington, 1910 and *C. limon* Linnaeus, 1753 were characteristic in having exclusively sub-metacentric chromosomes in the chromosome complements. On the other hand the remaining 8 species namely *C. macroptera*, *C. grandis*, *C. medica* Linnaeus, 1753, *C. reticulata*, *C. sinensis*, *C. latipes*, *C. indica* and *C. limetta* Linnaeus, 1753 had at least one pair of metacentric chromosome among the chromosome complements. It was more intriguing to record that two metacentric pairs were observed in *C. reticulata* and *C. latipes* as metacentrics while one pair of metacentric were recorded in remaining 6 species. Further the position of the meta-centrics varied in different species of *Citrus* presently studied ranging from 2nd pair (in *C. grandis* and *C. latipes*), 3rd pair (in *C. reticulata*), 4th pair (in *C. macroptera* and *C. indica*), 5th pair (in *C. reticulata*, *C. latipes* and *C. limetta*), 7th pair (in *C. sinensis*) and 8th pair (in *C. medica*). Thus, the 6th and 9th pairs in all the species have been found to be invariably sub-metacentric.

Sub-telocentric and telocentric chromosomes which are presumed to significantly influence the symmetry of the karyotype were altogether absent in any of the species presently studied. From the details of karyotypic formula derived for various species

Table 2. Karyotype formulae and characteristics in 10 species of *Citrus*. AI- asymmetry index; SC - the shortest chromosome length; LC - the longest chromosome length; CL - mean length of chromosome; CI - mean centromeric index; SD - standard deviation; CV_{CL} - component expressing the relative variation in chromosome length; CV_{CI} - component expressing the relative variation in centromeric index.

Species	Collection No	2n	Number of second-dary constriction	Range SC-LC (µm)	Ratio LC/SC	CL (µm) Mean (±SD)	CI Mean (±SD)	CV _{CL}	CV _{CI}	AI	Karyotype formula*
<i>C. macroptera</i>	Cma-1	18	-	5.01–10.52	2.09	7.44 (±1.9)	40.99 (±5.4)	25.53	13.17	3.36	16L+2V
<i>C. grandis</i>	CG-7	18	2	4.03–11.12	2.75	7.83 (±2.04)	43.93 (±3.2)	26.05	7.28	1.89	16L+2V
<i>C. medica</i>	Cmi-1	18	-	4.51–12.02	2.66	6.88 (±1.84)	42.73 (±3.0)	26.74	7.02	1.87	16L+2V
<i>C. reticulata</i>	CR-9	18	-	4.01–9.03	2.25	6.51 (±1.5)	43.07 (±4.6)	23.04	10.68	2.46	14L+4V
<i>C. sinensis</i>	CS-2	18	-	4.03–9.51	2.35	6.71 (±1.34)	43.88 (±6.7)	19.97	15.26	3.04	16L+2V
<i>C. jambhiri</i>	CJ-6	18	-	4.04–9.02	2.23	5.51 (±1.2)	38.72 (±6.7)	21.77	17.3	3.76	18L
<i>C. latipes</i>	CLt-1	18	-	4.02–10.11	2.51	7.08 (±1.76)	39.97 (±6.9)	24.85	17.26	4.28	14L+4V
<i>C. indica</i>	SO1	18	-	4.01–8.14	2.02	5.81 (±1.28)	43.1 (±3.8)	22.03	8.81	1.94	16L+2V
<i>C. limon</i>	MD/33	18	2	4.03–9.10	2.25	6.38 (±1.39)	42.16 (±5)	21.78	11.85	2.58	18L
<i>C. limetta</i>	Cle-1	18	-	3.51–9.01	2.56	6.18 (±1.77)	42.48 (±4.8)	28.64	11.29	3.23	16L+2V

* As per the method of Levan et al 1964

of *Citrus*, three patterns of karyotype formulae, 18L, 16L+2V and 14L+4V, were recorded. The ratio of longest to shortest chromosomes was recorded as highest in *C. grandis* and the lowest in *C. indica*.

Partial homology among the somatic chromosomes is often expressed in the form of heteromorphism and heteromorphic pairs in karyotypes. The present observation of 10 different species of *Citrus* had shown interspecific diversity with regards to presence or absence of heteromorphic pair in the chromosome complements. *C. macroptera*, *C. reticulata*, *C. limon* and *C. latipes* were characteristic in lacking any heteromorphic pair, while *C. grandis*, *C. medica* and *C. limetta* are unique in having two pairs of heteromorphic chromosomes in their respective complements. One pair of heteromorphic chromosomes was characteristic in *C. sinensis*, *C. jambhiri* and *C. indica*.

Due to technical problems nucleolar chromosome could not be clearly scored in any of the species presently studied, although there were some indications to suggest that the second pair in *C. grandis* and third pair in *C. limon* are probably nucleolar in nature by revealing the secondary constriction.

The asymmetry index (AI) value which has been derived from the data related to Chromosome length (CL) and Centromeric index (along with the co-efficient of variation) has resolved the ten species of *Citrus* presently investigated into two groups, one

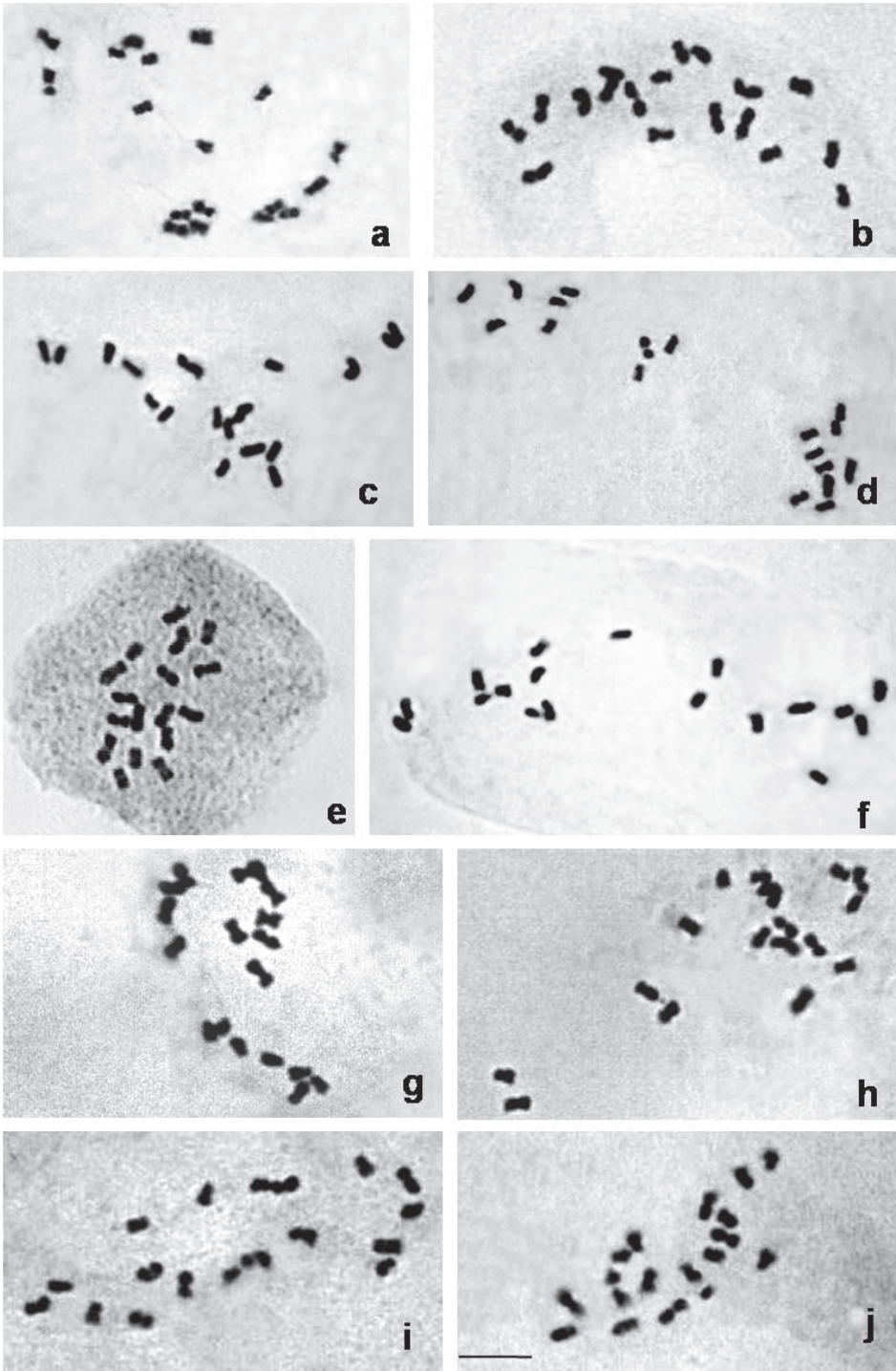


Figure 1. Mitotic complements of 10 *Citrus* species ($2n=2x=18$). **a** *C. macroptera*, **b** *C. grandis*, **c** *C. medica*, **d** *C. reticulata*, **e** *C. sinensis*, **f** *C. jambhiri*, **g** *C. latipes*, **h** *C. indica*, **i** *C. limon*, **j** *C. limetta*. Bar = 5 μ m.

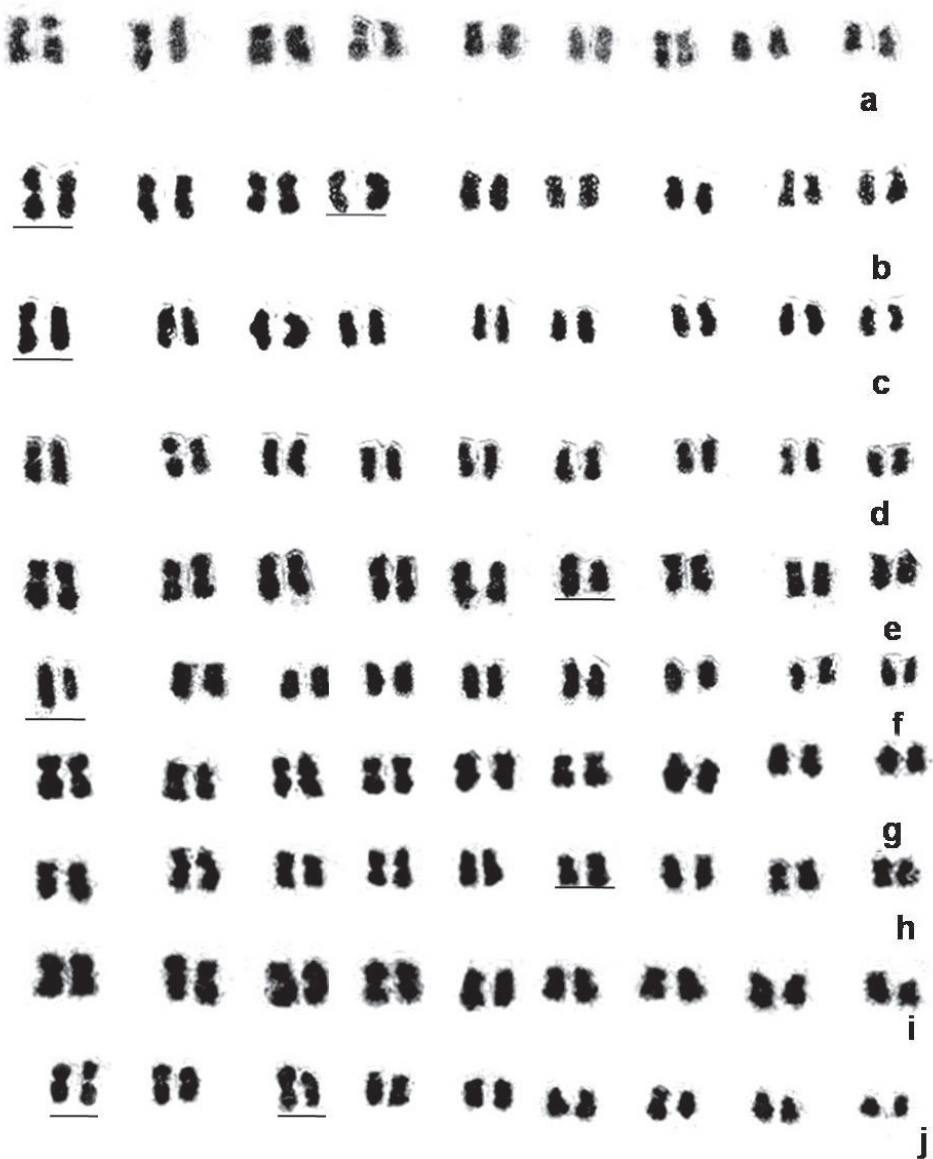


Figure 2. Karyograms of 10 *Citrus* species. **a** *C. macroptera*, **b** *C. grandis*, **c** *C. medica*, **d** *C. reticulata*, **e** *C. sinensis*, **f** *C. jambhiri*, **g** *C. latipes*, **h** *C. indica*, **i** *C. limon*, **j** *C. limetta*. Bar represent heteromorphic pairs.

with low value of asymmetry index indicating high karyotype symmetry corresponding to *C. medica* (1.87), *C. grandis* (1.89), *C. indica* (1.94), *C. reticulata* (2.46). The other group with high asymmetry index indicate low karyotype symmetry corresponding to *C. sinensis* (3.04), *C. limetta* (3.23), *C. macroptera* (3.36), *C. jambhiri* (3.76) and *C. latipes* (4.28). *C. limon* reported to be an intermediate species had an asymmetry index value of 2.58 indicating its link between the above two groups.

Discussion

From the perusal of published literature it can be seen that the somatic chromosome number in the genus *Citrus* is diverse ranging from $2n=18$, 27, 36, 54, etc. (Bacchi 1940; Krug 1943; Krug and Bacchi 1943; Lapin 1937) in various species. It can be seen from the above published data, that the relationship is indicative of a probable polyploid series with a basic number of $x=9$. In the present investigation all the somatic cells analysed in 10 different species had $2n=18$. However in one specimen of *C. reticulata* $2n=36$ was recorded. Thus the present studies involving 10 representative species did conform the somatic chromosome number as $2n=18$ only without any exception.

Thus the present data as reflected from Fig. 1 and 2, combined with chromosome counts available from the literature confirms that the genus *Citrus* is apparently monobasic in nature and $x=9$ is the most acceptable number. Such observation received an ample support from reports of Krug (1943), Tanaka (1930), Yamamoto et al. (2007), and Barros e Silva et al. (2010). The sporadic occurrence of $2n=36$ in a few cells of *C. reticulata* is another indication for $x=9$ as the true basic number of the genus *Citrus*. The basic chromosome number of *Citrus* (Rutaceae) and other related genera of the subfamily Aurantioideae has been reported as $x=9$ (Frost 1925). The majority of the wild and cultivated forms of *Citrus* are identified as diploids, i.e. $2n=2x=18$ (Krug 1943). However polyploids are known to exist, which arise either spontaneously or following certain cross combination. For example there have been reports of naturally occurring tetraploids from inter-specific crosses between tetraploid and diploid taxa (Oiyama et al. 1991) and induced polyploids by colchicine (Barret 1974, Oiyama and Okudai 1986). Heteroploid crosses involving tetraploid ($4x$) and diploid ($2x$) species resulted in spontaneous production of a triploid 'Tahiti lime' (Krug and Bacchi 1943; Oiyama et al. 1991, 1980). Luss (1935) was the first to report about a hypertriploid ($3x + 1=28$). Similar observations of hypertriploid were also reported by Lapin (1937), Krug and Bacchi (1943) who have recorded the occurrence of aneuploid from the progeny of various crosses among diploid species. Inter-specific hybridization, ploidy level and the mono/polyembryonic nature of the *Citrus* variety may also contribute to the frequency of polyploid progenies (Cameron and Soost 1969; Wakana et al. 1981).

In the present studies on 10 different *Citrus* species, the chromosome complements were all resolved into either metacentric or sub-metacentric chromosomes only. From the details of karyotypic formulae derived for these species of *Citrus*, three patterns of karyotype formulae, $18L$, $16L+2V$ and $14L+4V$, were recorded and there was complete absence of sub-telocentric and telocentric chromosomes which is indicative of the stability of the genome and of the absence of structural alteration of the chromosomes in the genus *Citrus*. Therefore, it is presumed that speciation in the genus *Citrus* could have been influenced by gene mutations which have no effect in the overall structure of chromosomes.

Swingle and Reece (1967), opined that the genus *Citrus* has only three 'basic' true species viz. Citron (*Citrus medica* L.), Mandarin (*Citrus reticulata* Blanco), and Pummelo (*Citrus grandis* Osbeck), while the rest of the species are hybrid derivatives of any

one of the true species and species belonging to sub genus *Papeda* (Barrett and Rhodes 1976; Federici et al. 1998; Nicolosi et al. 2000; Scora 1975). However the high resolution of karyotypes as observed in the present mitotic preparations does not distinguish between basic true species and derived ones. There was no grouping of chromosomes for distinguishing the karyotypes on the basis of the hybrid nature of species as reported. However, the staining methods used traditionally with aceto-carmine, aceto-orcein or Feulgen's solution were less informative to reveal detailed structure under the usual optical microscope because the mitotic chromosomes are very small (1.0–4.0 μm) and most of them are similar in morphology (Krug 1943). Therefore, to establish the hybrid nature of some of the species can only be determine by using more sensitive technique like *in situ* hybridization and the study of banding patterns of the chromosomes.

From the karyological data presented in Table 2 it can be observed that the asymmetry index of different species of *Citrus* presently investigated had shown significant variation. *C. medica*, *C. grandis* and *C. reticulata* which are considered as true basic species (Swingle and Reece 1967) are characteristic in having low asymmetry index of 1.87, 1.89 and 2.46 respectively. On the other hand 6 species had higher asymmetry index while *C. indica* had an intermediate value. The lower asymmetry indexes of the 3 species recorded suggest an ancestral genome which makes them as true basic species. The higher asymmetry index value recorded in 6 species is indicative of the fact that their genomes are relatively advanced and are in a process of reorganisation through chromosome structural alterations. *C. indica* with its intermediate value of asymmetry index may be regarded as one of the progenitor species of cultivated *Citrus* (Malik et al. 2006) and has a special position in the genus.

Acknowledgements

The present work was carried out in the Department of Biotechnology and Bioinformatics, North-Eastern Hill University, Shillong and was supported by University Grants Commission, New Delhi through scholarship.

References

- Bacchi O (1940) Observacoes citologicas em *Citrus*: I. Numero de cromosomios de algumas especies e variedades. Journol de Agronomia 3: 249–258.
- Barrett HC, Rhodes AM (1976) A numerical taxonomic study of affinity relationships in cultivated *Citrus* and its close relatives. Systematic Botany 1: 105–136. doi: 10.2307/2418763
- Barrett HC (1974) Colchicine induced polyploidy in *Citrus*. Botanical Gazette 135: 29–41. doi: 10.1086/336726
- Barros e Silva AE, Marques A, Santos KGB, Guerra M (2010) The evolution of CMA bands in *Citrus* and related genera. Chromosome Research 18: 503–514. doi: 10.1007/s10577-010-9130-2

- Bathla HVL, Tyagi KK, Khatri RS, Singh J, Sood RM, Goyal JP, Agrawal SC, Verma MS (2001) Agricultural Research Data Book 2001. IASRI and ICAR, New Delhi, 113 p.
- Bhattacharya SC, Dutta S (1956) Classifications of *Citrus* fruits of Assam. ICAR Science Monograph 20: 1–110.
- Battaglia E (1955) Chromosome morphology and terminology. *Caryologia* 6: 179–187.
- Cameron JW, Soost RK (1969) Characters of new populations of *Citrus* polyploids, and the relation between tetraploidy in the pollen parent and hybrid tetraploid progeny. Proceedings of the first International *Citrus* Symposium 1, June 1969 Riverside, California, USA, 199–205.
- Federici CT, Fang DQ, Scora RW, Roose ML (1998) Phylogenetic relationships within the genus *Citrus* (Rutaceae) and related genera as revealed by RFLP and RAPD analysis. *Theoretical Applied Genetics* 96: 812–822. doi: 10.1007/s001220050807
- Frost HB (1925a) Tetraploidy in *Citrus*. *Proceedings of National Academy Science of USA* 11: 535–537. doi: 10.1073/pnas.11.9.535
- Frost HB (1925b) The chromosomes of *Citrus*. *Journal Washington Academy of Science* 15: 1–3.
- Guerra M, Pedrosa A, Silva AEB, Cornelio MTM, Santos KGB, Soares Filho WS (1997) Chromosome number and secondary constriction variation in 51 accessions of a *Citrus* germplasm bank. *Brazilian Journal of Genetics* 20: 489–496. doi: 10.1590/S0100-84551997000300021
- Khan IA (2007) *Citrus* Genetics, Breeding and Biotechnology. CAB International 160 pp. doi: 10.1079/9780851990194.0000
- Krug CA (1943) Chromosome numbers in the subfamily Aurantioideae with special reference to the genus *Citrus*. *Botanical Gazzetts* 104: 602–611. doi: 10.1086/335173
- Krug CA, Bacchi O (1943) Triploid varieties of *Citrus*. *Journal of Heredity* 34: 277–283.
- Lapin W K 1937 Investigations on polyploidy in *Citrus*. U.S.S.R. All-Union Science Research Institute for Humid Sub-tropic Works 1(4): 1–68. [In Russian with English summary]
- Levan A, Fredga K, Sandberg AA (1964) Nomenclature for centromeric position on chromosome. *Hereditas* 52: 201–220. doi: 10.1111/j.1601-5223.1964.tb01953.x
- Longley AE (1925) Polycarpy, polyspory and polyploidy in *Citrus* and *Citrus* relatives. *Journal Washington Academy of Science* 15: 347–351.
- Luss AI (1935) *Citrus* introduction and selection in the U.S.S.R., *Soviet Sub-tropics* 11: 17–22 [Cited in *Plant Breeding Abstract* 6: entry 1372]
- Malik SK, Chaudhury R, Dhariwal OP, Rajwant KK (2006) Collection and characterization of *Citrus indica* Tanaka and *C. macroptera* Montr.: wild endangered species of northeastern India. *Genetic Resources and Crop Evolution* 53: 1485–1493. doi: 10.1007/s10722-005-7468-7
- McPhee J (1967) *Oranges*. New York, 76 pp.
- Nicolosi E, Deng ZN, Gentile A, La Malfa S, Continella G, Tribulato E (2000) *Citrus* phylogeny and genetic origin of important species as investigated by molecular markers. *Theoretical Applied Genetics* 100: 1155–1166. doi: 10.1007/s001220051419
- Osbeck P (1757) *Dagbok ofwer en Ostindisk Resa*, p.98. Lor Ludv Grefing, Stockholm.

- Oiyama I, Kobayashi S, Yoshinaga S, Ohgawara T, Ishii S (1991) Use of pollen from a somatic hybrid between *Citrus* and *Poncirus* in the production of triploids. Horticultural Science 26:1082.
- Oiyama I, Okudai N, Takahara T (1980) Studies on polyploid breeding in *Citrus*. (3) Triploid progenies from small seeds of diploid sweet orange cultivars. Journal of the Japanese Society of Horticultural Sciences 3: 52–53.
- Oiyama I, Okudai N (1986) Production of Colchicine-induced autotetraploid plants through micrografting in monoembryonic citrus cultivars. Japanese Journal of Breeding 36: 371–376.
- Paszko B (2006) A critical review and a new proposal of karyotype asymmetry indices. Plant Systematics and Evolution, 258: 39–48. doi: 10.1007/s00606-005-0389-2
- Scora RW (1975) On the history and origin of *Citrus*. Bulletin of the Torrey Botanical Club 102: 369–375. doi: 10.2307/2484763
- Sharma BD, Hore DK, Gupta SG (2004) Genetic resources of *Citrus* of north-eastern India and their potential use. Genetic Resources and Crop Evolution 51: 411–418. doi: 10.1023/B:GRES.0000023456.70577.3d
- Singh HP, Chadha KL (1993) Genetic Resources of *Citrus*: In: Advances in Horticulture, Vol.1 (Eds) Malhotra Publishing House, New Delhi. 164 pp.
- Swingle WT, Reece PC (1967) The botany of *Citrus* and its wild relatives. In: Reuther W, Batchelor LD, Webber HJ (Eds) *The Citrus Industry*, University of California press, Berkeley, 190–340.
- Tanaka T (1930) Taxonomie de la Citriculture tropicale. Revue de Botanique Applique 10: 114–119.
- Tanaka T (1977) Fundamental discussion of *Citrus* classification. Studia Citrologica 14: 1–6.
- Upadhayay RC and Sundriyal RC (1998) Crop gene pools in the North-East Indian Himalayan and threats. In: Pratap T, Sthapit B (Eds) Managing Agrobiodiversity-Farmers Changing Perspective and Institutional Responses in the Hindu Kush-Himalayan Region ICIMOD&IPGRI, Kathmandu, Nepal, 167–173.
- Wakana A, Iwamasa M, Uemoto S (1981) Seed development in relation to ploidy of zygotic embryo and endosperm in polyembryonic *Citrus*. Proceedings International Society of Citriculture 1: 35–39.
- Yamamoto M, Abkenar AA, Matsumoto R, Nesumi H, Yoshida T, Kuniga T, Kubo T, Tomimaga S (2007) CMA banding patterns of Chromosomes in major *Citrus* species. Journal of Japanese Society of Horticultural Science 76(1): 36–40. doi: 10.2503/jjshs.76.36