

Distribution modeling applied to deficient data species assessment: A case study with *Pithecopus nordestinus* (Anura, Phyllomedusidae)

Felipe Pessoa Da Silva¹, Hugo Fernandes-Ferreira²,
Martín Alejandro Montes¹, Lucas Gonçalves da Silva¹

1 Departamento de Biologia, Universidade Federal Rural de Pernambuco – UFRPE, Rua Dom Manoel de Medeiros, s/n, Dois Irmãos, CEP 52171-900, Recife, PE, Brazil

2 Laboratório de Conservação de Vertebrados Terrestres, Universidade Estadual do Ceará – UECE, Rua José de Queiroz Pessoa, CEP 63900-000, Quixadá, Ceará, Brazil

Corresponding author: Felipe Pessoa Da Silva (felipe.pessoas@gmail.com); Hugo Fernandes-Ferreira (hugo-fernandesbio@gmail.com); Martín Alejandro Montes (martinmontes76@gmail.com); Lucas Gonçalves da Silva (lucas_gonc@yahoo.com.br)

Academic editor: M. Guimarães | Received 18 October 2019 | Accepted 7 May 2020 | Published 10 June 2020

Citation: Da Silva FP, Fernandes-Ferreira H, Montes MA, da Silva LG (2020) Distribution modeling applied to deficient data species assessment: A case study with *Pithecopus nordestinus* (Anura, Phyllomedusidae). Neotropical Biology and Conservation 15(2): 165–175. <https://doi.org/10.3897/neotropical.15.e47426>

Abstract

The arboreal frog *Pithecopus nordestinus* is geographically present in almost all Brazilian Northeast territory and Minas Gerais State. It is currently classified as deficient data (DD) by IUCN Red List of Endangered Species, requiring further knowledge about its geographic distribution and population status. In this context, the species distribution modeling can be applied, since its basis uses species occurrence records and environmental variables related to bioclimatic and landscape features. This kind of method predicts the species suitability of certain organism in the geographic space. We obtained 159 *P. nordestinus* occurrence records, covering all the previously known distribution of the species. These records were collected from direct field sampling, scientific literature, museum collections, and available online databases. We used four species distribution modeling algorithms to obtain the potential range (extent of occurrence) and available habitat for this frog through habitat area analysis proposed by IUCN. The generated models can be considered as excellent, with mean AUC value of 0.981. The environmental variables related to temperature and radiation were the most important to

the construction of this distribution model. Our results indicate that the forested areas of the Atlantic Forest domain and forest patches inside the Caatinga biome present the highest suitability values for the species occurrence and the major part of available habitats, a fact possibly related to the known arboreal habit of this amphibian. We thus provide a new distribution area for *P. nordestinus* more broadly than previously known and a new polygon for conservation purposes based on extent of occurrence, and an increase of occupancy based on habitat area analysis. The identification of additional areas where the *P. nordestinus* occurrence was not yet well known, new habitats for possible dispersal or recolonization; and the selection of conservation hotspots applied to this species are direct applications from our study. In addition, the methodological procedures used here may serve as a baseline tool for new investigations with focus on still deficient data species and its ecological and conservation planning requirements.

Keywords

Amphibia, conservation planning, ecological niche, ensemble modeling

Introduction

The IUCN Red List of Threatened Species is one of the most important and relevant tools for biodiversity, as well as a source of information about the status of the worldwide fauna and flora, which supports decision making in conservation planning. A single species can be allocated in only one of the different extinction risk categories ranging from low to high potential. When there is insufficient and/or inadequate information to make an effective assessment of its status, either directly or indirectly from the species distribution and population information, the taxa can be classified as 'deficient data' ("DD"). The taxa classified as DD may require urgent conservation actions, yet this is not a threat category and conservation actions may not be directed at prioritizing, or focusing on, this species (IUCN 2001, 2017).

The last valid and available IUCN assessment about Anura evaluated the conservation status of more than 6.000 species and, currently, 21.32% of them are categorized as DD. Out of this total DD species, 11% of them occur in the Neotropics. Phyllomedusidae is endemic from the Neotropics. In this family, *Pithecopus* Cope, 1866 is represented by five distinct species (Faivovich et al. 2010; Frost 2016; IUCN 2019).

The small anuran *Pithecopus nordestinus* (Caramaschi, 2006) is characterized by the predominant arboreal habits, and can be distinguished from other similar species by its color combination pattern, such as the black vertical bars above the red-orange background in the flank hidden parts and limbs. The species is distributed throughout the northeastern region of Brazil, occupying most of the Caatinga biome and adjacent regions in the states of Alagoas, Bahia, Ceará, Minas Gerais, Paraíba, Pernambuco, Piauí, Rio Grande do Norte e Sergipe (Caramaschi 2006; Faivovich et al. 2010; Duellman et al. 2016; Frost 2016). This species is currently classified as DD according to the IUCN Red List, and it is not possible to determine their current status and, moreover, the risk of its extinction. In this context, more information and studies about its distribution and population status are needed (Angulo 2016).

Knowledge about the geographical distribution of a species is a fundamental tool for the foundation of evolutionary and ecological studies. Species distribution models use the ecological niche as baseline (Peterson 2011), merging occurrence data and environmental variables to infer biological requirements for the persistence of a target species (Elith and Leathwick 2009). There are several algorithms used to obtain species distribution models focusing on the species conservation planning (Carroll 2010; Yang et al. 2013). Additionally, this type of approach allows the detailed analysis of environmental variables closely associated with species real occurrence (Phillips et al. 2006, 2017). Brooks et al. (2019) proposed the implementation of a new method called the ‘area of habitat’ (AOH) to fill gaps of information about the extinction risk of a species, based on the geographic distribution and other criteria such as extreme population fluctuations and continuous decline. This analysis is a result of the available habitat for a species inside the distribution limits of this taxa, being more realistic and a refinement of the previous considered analyses by IUCN. The previous assessments by IUCN just considered the extent of occurrence (EOO; is a predicted area from the minimum polygon based on confirmed location records for some taxa) and the area of occupancy (AOO; defined by the occupied cells by the species inside a grid of 2 km²) (IUCN 2013).

Recent occurrences have been recorded to *P. nordestinus* (Dal Vechio et al. 2016; Castro et al. 2019; Freitas et al. 2019), which in turn may change the IUCN/conservation status of the species. Here, we also provide new occurrence records for the species, so our aim here is to update the distribution of the species and: (1) characterize the potential distribution of *P. nordestinus* in Brazil; (2) identify environmental factors associated with the occurrence of their natural populations; and (3) suggest baseline tools to improve conservation strategies for DD species based on IUCN assessments criteria.

Methods

Database compilation

The construction of the database containing *P. nordestinus* occurrence records was performed by field surveys, a probe into the scientific literature, museum vouchers, and online databases such as GBIF (<http://www.gbif.org>) and SpeciesLink (<http://splink.cria.org>). The current nomenclature and previous synonymy of the species, “*Pithecopus nordestinus*” and “*Phyllomedusa nordestina*”, respectively, were used as search keywords in all databases. Also, only geo-referenced occurrences of the target species were used in the analyses. We obtained a total of 159 unique and representative records to build the model from the entire *P. nordestinus* range (Figure 1) (Suppl. material 1: Table S1). This information was entered into ARCGIS 10.1 software (ESRI 2010) to extract information on the respective biomes where each sample of *P. nordestinus* was recorded (based on Olson et al. [2001]), see Suppl. material 1: Table S1.

Selection of Environmental variables

In the modeling procedures we initially considered 36 bioclimatic variables obtained from the WorldClim (<http://www.worldclim.org/>) and CliMond databases (Hijmans et al. 2005; Hutchinson et al. 2009; Kriticos et al. 2012) and five vegetation structure variables from EarthEnv (Tuanmu and Jetz 2014). All variables were converted using the package *raster* implemented in R software (R Core Team 2018) at a resolution of 2.5 min. A Pearson's correlation test between variables was conducted, where the most correlated ones were eliminated ($r > 0.80$; $p < 0.05$) in order to avoid model over-fitting (Callegari-Jacques 2003; Mateo et al. 2013). A total of 12 least correlated ones were selected to build the models. The bioclimatic variables selected were: temperature seasonality (Bio4), temperature annual range (Bio7), mean temperature of warmest quarter (Bio10), annual precipitation (bio12), Annual mean radiation (bio20), radiation of driest quarter (Bio25), Radiation of coldest quarter (bio27), Mean moisture index of driest quarter (Bio33), evergreen broadleaf trees (V02), Mixed/Other Trees (V04), shrubs (V05) and altitude (alt).

Modeling procedures

The distribution models were produced using ensembles from several algorithms implemented in Biomod2 package (Thuiller et al. 2016) in the R software (R Core Team 2018). The location records were used to construct models containing five sets with 10.000 background points randomly created throughout the study area. We used four different distribution model algorithms: artificial neural networks (ANN) (Ripley 1996), generalized boosted models or boosted regression trees (GBM) (Friedman 2001), random forest (RF) (Breiman 2001), and maximum entropy (Maxent) (Phillips et al. 2006). We totalized 200 runs (comprising 4 algorithms \times 10 runs of cross validation \times 5 sets of random background points), with 1.000 iterations in each run. To evaluate the models fitting in each run, the dataset was partitioned into two sets: 70% for training and 30% for testing models. Moreover, aiming to analyze the accuracy of our models, we performed two different statistical tests: (1) True Skill Statistic analysis (Allouche et al. 2006) and (2) the Area Under Curve (AUC) value for the Receiver Operating Characteristic (ROC) curve (with values varying from 0 to 1, and based on sensitivity versus specificity of the response between occurrence data and variables, incorporating a binomial probability as a null model; Phillips et al. 2006). We then analyzed the relative contribution of each environmental variable to construct the models using the jackknife test (Phillips et al. 2006). To be conservative, models with AUC and TSS values above 0.7 and 0.4, respectively, were selected for/to construct the ensemble model (Buisson et al. 2010). The ensemble approach considered a final climatic suitability map considering the mean suitability value of each grid generated by distinct algorithms. The validation and clustering of the final maps were done using the minimum omission, considered as the lowest suitability value of an effectively sampled point (Silva et al. 2017), yielding the distribution map for *P. nordestinus*.

Distribution assessment

The final polygon was built overlapping the new points of occurrence, the IUCN polygon and the models built, and then drawing the minimum convex polygon.

The EOO and AOO were calculated using the package “red – IUCN red listing tools” (Cardoso 2017; Cardoso 2018) implemented in the R software, following the guidelines proposed by IUCN. We analyzed the AOH based in the methods proposed by Brooks et al. (2019). Initially, the polygon was overlaid with the landscape information classes based on Globcover 2015 (<https://www.esa-landcover-cci.org>) and elevation (Jarvis et al. 2008), with pixel resolution of 30m. This procedure aimed to extract the preferable known habitats and altitudes for the species. Finally, for the AOH validation, we used our own database of location records (we used the binary map to calculate how much of the AOH is predicted to be occupied by the species). All procedures were performed using the ArcGIS 10.1 software (ESRI 2010).

Results

Approximately 55% of the occurrences for the species were located within the Caatinga biome, 40% in the moist Atlantic Forest and 3% in dry Atlantic Forest and have also recorded occurrences in the Cerrado (2%) (Figure 1A). These classifications in distinct biomes were based on Olson et al. (2001).

The distribution model generated for *P. nordestinus* in our study provided satisfactory predictive powers, with an average of AUC = 0.973 (\pm 0.038) and TSS 0.834 (\pm 0.064). The model shows a greater suitability for *P. nordestinus* especially in areas of moist Atlantic Forests in the coastal portion of northeast Brazil and dominated forest patches of Caatinga and Cerrado biomes (Figure 1B). The Temperature annual range (Bio7) presented the greatest contribution to the model construction, followed by the Annual mean radiation (Bio20), the radiation of driest quarter (Bio25) and the temperature seasonality (Bio4). The first two variables combined sum up to

Table 1. Relative importance of bioclimatic variables used to generate distribution models for *Pithecopus nordestinus* into the software Maxent.

Variable	Percent Contribution
Temperature annual range (bio7)	32.4
Annual mean radiation (bio20)	17.5
Radiation of driest quarter (bio25)	11.2
Temperature seasonality (bio4)	8.9
Mixed/Other Trees	6.5
Annual precipitation (bio12)	5.5
Shrubs	5.4
Radiation of coldest quarter (bio27)	4.5
Evergreen Broadleaf Trees	2.6
Altitude	2.2
Mean moisture index of driest quarter (bio33)	2.4
Mean temperature of warmest quarter (bio10)	2

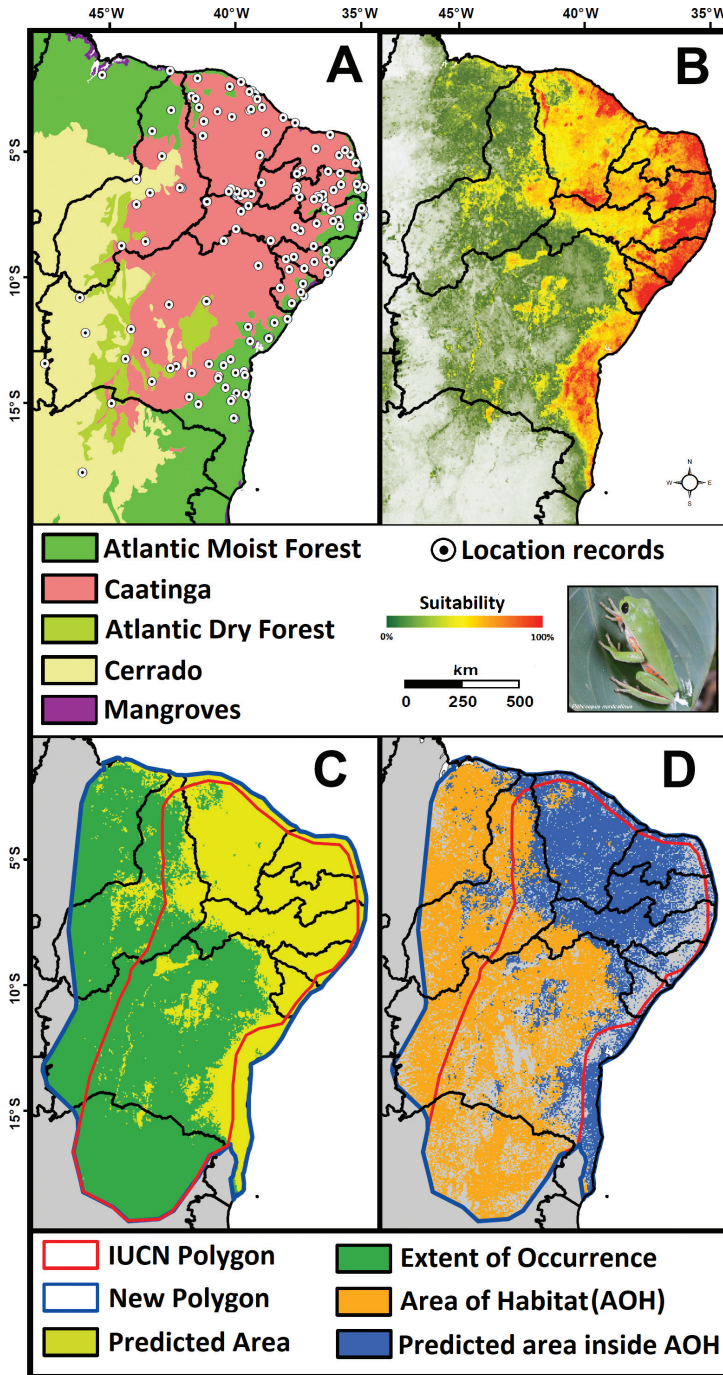


Figure 1. Partial map of northeast Brazil containing: (A) *Pithecopus nordestinus* location records overlaid with biomes based on Olson et al. (2001); (B) distribution model (ensemble) generated by different algorithms; (C) comparison between IUCN valid (Angulo 2016) merged proposed new polygon based on suitability map and occurrence records, and; (D) area of habitat calculated into the new distribution polygon. Photo: Ednilza Maranhão dos Santos (Tapacurá Ecological Station, Pernambuco, Brazil)

a total of 49.9% of contribution for the model construction (Table 1). The Jackknife analysis also shows the variable Bio11 as the one that presents a greater gain to the training of the model.

The current available IUCN polygon (Angulo 2016) showed a total area of 1,061,442 km², more restricted compared with our proposed polygon of 1,531,907 km². Thus, our proposed distribution increased the range of *P. nordestinus* in 44.32% (Figure 1C). The EOO calculated by using the modeled area was 1,618,169 km², with an AOO of 115,484 km². The AOH obtained (Figure 1D) was 1,126,679 km² within the new proposed distribution polygon, as well the overlapped predicted area inside of AOH was 434,379 km².

Discussion

The high AUC and TSS values obtained (above 0.80) indicates that all models were able to roughly estimate the geographic distribution of the species as ranked by Elith and Leathwick (2009). Despite the high predictive value, the models can present some sources of uncertainty, which are possibly derived from information not captured by the algorithms or important information on the species' distribution that were not considered during its construction. A future step to try to improve the models would be to incorporate availability information about resources for reproduction, such as the proximity of water bodies, and also biotic variables such as the presence and abundance of predators and competitors (Caldas et al. 2019). The high suitability found in areas of moist Atlantic Forests agrees with Moura et al. (2015) that suggest high association between the species' presence and forest patches, due to their preferable arboreal habits. Additionally, our results incorporate changes in the species distribution described initially by Caramaschi (2006) and the actually valid polygon from the last IUCN Red List assessment (Angulo 2016), which can be observed in the differences between the polygons showed in the Figure 1B, filling important gaps in the knowledge about the distribution of *P. nordestinus*.

The species is still considered as data deficient at global level, so, comparing the two polygons, we can highlight an expansion of the potential distribution of the species to the southern coast of Bahia State, and the western part of the Brazilian northeastern region. Through the association between the species distribution model and AOH obtained in our analyses, we identified realistic suitable areas inside the known occurrence limits of the species (Figure 1D). This kind of approach can be considered as an important tool for conservation planning in global and local levels and can be applied to other species that present the same endemism patterns, especially in the Caatinga and Atlantic Forest domain.

Previous studies on ecological niche modeling for reptiles (Sales et al. 2015) and amphibians (Cassemiro et al. 2012) from northeast Brazil suggest that temperature is the main environmental variable related to the distribution of these groups in the region. Our results agree with those obtained by Cassemiro et al. (2012). However, it is possible to observe environmental variables related to radiation and moisture also contributing significantly (Table 1). All these results converge to the direct in-

fluence under forested landscapes preferred by *P. nordestinus*. These environmental predictors could be directly related to thermoregulation, especially in semi-desert ecoregions such as the Caatinga (Olson et al. 2001). In this biome, individuals tend to search for forest patches aiming to avoid the loss of body water to the environment by evaporation (Sanabria and Quiroga 2019).

We propose an increase in the distributional suitable area for *P. nordestinus* previously described by recent studies. The environmental variables that best explain the distribution of this species are related to temperature (mainly), radiation and moisture. Additionally, the distribution can be influenced by the landscape conformation and habitat availability (Van Buskirk 2005), favoring the preferable habits of this tree frog and thermoregulation features associated. Our findings can be applied to the identification of additional locations where *P. nordestinus* may exist, but has not yet been documented; recognition of localities where the species lost their range and could be reestablished in the future; selection of hotspots (priority areas) for conservation; and to enhancing the IUCN Red List assessments, thus outlining new conservation strategies for deficient data species and those potentially at risk.

Acknowledgements

The authors would like to thank Werlyson Pinheiro, Érica Demondes, Carlos Bezerra Neves and Isabella Ribeiro for their scientific support; and Ednilza Maranhão dos Santos for providing the photograph included in this article. This study was financed in part by the Coordenação de Aperfeiçoamento de Pessoal de Nível Superior – Brasil (CAPES) – Finance Code 001 (Felipe Pessoa da Silva); by Conselho Nacional de Desenvolvimento Científico e Tecnológico (CNPq) and FACEPE (Martín Alejandro Montes and Lucas Gonçalves da Silva).

References

- Allouche O, Tsoar A, Kadmon R (2006) Assessing the accuracy of species distribution models: Prevalence, kappa and the true skill statistic (TSS). *Journal of Applied Ecology* 43(6): 1223–1232. <https://doi.org/10.1111/j.1365-2664.2006.01214.x>
- Angulo A (2016) *Pithecopus nordestinus*. The IUCN Red List of Threatened Species 2016: e.T135878A107298562. <https://doi.org/10.2305/IUCN.UK.2016-3.RLTS.T135878A107298562.en>
- Breiman L (2001) Random forests. *Machine Learning* 45(1): 5–32. <https://doi.org/10.1023/A:1010933404324>
- Brooks TM, Pimm SL, Akçakaya HR, Buchanan GM, Butchart SHM, Foden W, Hilton-Taylor C, Hoffmann M, Jenkins CN, Joppa L, Li BV, Menon V, Ocampo-Peñuela N, Rondinini C (2019) Measuring terrestrial area of habitat (AOH) and its utility for the IUCN red list. *Trends in Ecology & Evolution* 34(11): 977–986. <https://doi.org/10.1016/j.tree.2019.06.009>
- Buisson L, Thuiller W, Casajus N, Lek S, Grenouillet G (2010) Uncertainty in ensemble forecasting of species distribution. *Global Change Biology* 16(4): 1145–1157. <https://doi.org/10.1111/j.1365-2486.2009.02000.x>

- Caldas FLS, Silva BD, De-Carvalho CB, Santana DO, Gomes FFA, de Queiroga Cavalcanti LB, Santos FA, Faria RG (2019) Factors determining the spatial and temporal variation in the abundance of *Pithecopus nordestinus* tadpoles (Anura: Phyllomedusidae) in a semi-arid Brazilian environment. *Salamandra* (Frankfurt) 55(4): 253–263.
- Callegari-Jacques S (2003) Bioestatística: Princípios e aplicações. Artmed. <http://site.ebrary.com/id/10707090>
- Caramaschi U (2006) Redefinição do grupo de *Phyllomedusa hypochondrialis*, com redescritção de *P. megacephala* (Miranda-Ribeiro, 1926), revalidação de *P. azurea* Cope, 1862 e descrição de uma nova espécie (Amphibia, Anura, Hylidae). *Arquivos do Museu Nacional. Museu Nacional (Brazil)* 64(2): 159–179.
- Cardoso P (2017) red – an R package to facilitate species red list assessments according to the IUCN criteria. *Biodiversity Data Journal* 5: e20530. <https://doi.org/10.3897/BDJ.5.e20530>
- Cardoso P (2018) red: IUCN Redlisting Tools. R package version 1.4.0. <https://CRAN.R-project.org/package=red>
- Carroll C (2010) Role of climatic niche in focal-species-based conservation planning: Assessing potential effects of climate change on Northern Spotted Owl in the Pacific Northwest, USA. *Biological Conservation* 143(6): 1432–1437. <https://doi.org/10.1016/j.biocon.2010.03.018>
- Casemiro FAS, Gouveia SF, Diniz-Filho JAF (2012) Distribuição de *Rhinella granulosa*: Integrando envelopes bioclimáticos e respostas ecofisiológicas. *Revista da Biologia* 8: 38–44. <https://doi.org/10.7594/revbio.08.07>
- Castro DP, Mângia S, Medeiros-Magalhães F, Röhr DL, Camurugi F, Silveira-Filho RR, Silva MMX, Andrade-Oliveira JA, Sousa TA, França FGR, Harris DJ, Garda AA, Borges-Nojosa DM (2019) Herpetofauna of protected areas in the Caatinga VI: The Ubajara National Park, Ceará, Brazil. *Herpetology Notes* 8: 727–742.
- Dal Vechio F, Teixeira Jr M, Recoder RS, Rodrigues MT, Zaher H (2016) The herpetofauna of Parque Nacional da Serra das Confusões, state of Piauí, Brazil, with a regional species list from an ecotonal area of Cerrado and Caatinga. *Biota Neotropica* 16(3): 1–19. <https://doi.org/10.1590/1676-0611-BN-2015-0105>
- Duellman WE, Marion AB, Hedges SB (2016) Phylogenetics, classification, and biogeography of the treefrogs (Amphibia: Anura: Arboranae). *Zootaxa* 4104(1): 1–109. <https://doi.org/10.11646/zootaxa.4104.1.1>
- Elith J, Leathwick JR (2009) Species distribution models: Ecological explanation and prediction across space and time. *Annual Review of Ecology Evolution and Systematics* 40(1): 677–697. <https://doi.org/10.1146/annurev.ecolsys.110308.120159>
- ESRI (2010) ArcGIS Desktop: release 10.1. Environmental Systems Research Institute, Redlands.
- Faivovich J, Haddad CF, Baeta D, Jungfer KH, Álvares GF, Brandão RA, Sheil C, Barrientos LS, Barrio-Amorós CL, Cruz CAG, Wheeler WC (2010) The phylogenetic relationships of the charismatic poster frogs, Phyllomedusinae (Anura, Hylidae). *Cladistics* 26(3): 227–261. <https://doi.org/10.1111/j.1096-0031.2009.00287.x>
- Freitas MA, Abegg AD, Silva TFS, Fonseca PM, Hamdan B, Filadelfo T (2019) Herpetofauna of Serra do Timbó, an Atlantic Forest remnant in the State of Bahia, Northeastern Brazil. *Herpetology Notes* 12: 245–260.

- Friedman JH (2001) Greedy function approximation: A gradient boosting machine. *Annals of Statistics* 29(5): 1189–1232. <https://doi.org/10.1214/aos/1013203451>
- Frost DR (2016) *Amphibian Species of the World: an Online Reference*. Version 6.0 [31 October 2016]. New York. <http://research.amnh.org/herpetology/amphibia/index.html>
- Hijmans RJ, Cameron SE, Parra JL, Jones PG, Jarvis A (2005) Very high resolution interpolated climate surfaces for global land areas. *International Journal of Climatology* 25(15): 1965–1978. <https://doi.org/10.1002/joc.1276>
- Hutchinson M, Xu T, Houlder D, Nix H, McMahon J (2009) ANUCLIM 6.0 User's Guide. Australian National University, Fenner School of Environment and Society.
- International Union for Conservation of Nature (2013) Documentation Standards and Consistency Checks for IUCN Red List Assessments and Species Accounts (Version 2). https://nc.iucnredlist.org/redlist/content/attachment_files/RL_Standards_Consistency.pdf
- IUCN (2001) IUCN red list categories and criteria: version 3.1. Prepared by the IUCN Species Survival Commission.
- IUCN (2019) The IUCN Red List of Threatened Species. Version 2019-1. <http://www.iucn-redlist.org>
- Jarvis A, Reuter HI, Nelson A, Guevara E (2008) Hole-filled SRTM for the globe Version 4. available from the CGIAR-CSI SRTM 90m. Database 15: 25–54. <http://srtm.csi.cgiar.org>
- Kriticos DJ, Webber BL, Leriche A, Ota N, Macadam I, Bathols J, Scott JK (2012) CliMond: Global high resolution historical and future scenario climate surfaces for bioclimatic modelling. *Methods in Ecology and Evolution* 3(1): 53–64. <https://doi.org/10.1111/j.2041-210X.2011.00134.x>
- Mateo RG, Vanderpoorten A, Munoz J, Laenen B, Desamore A (2013) Modeling species distributions from heterogeneous data for the biogeographic regionalization of the European bryophyte flora. *PLoS ONE* 8(2): e55648. <https://doi.org/10.1371/journal.pone.0055648>
- Moura GJB, Nogueira SEM, Neto EMC (2015) Os anfíbios e répteis da Reserva Madeira, estado de Alagoas, Nordeste do Brasil. Feira de Santana, Brasil, UEFS.
- Olson DM, Dinerstein E, Wikramanayake ED, Burgess ND, Powell GV, Underwood EC, D'Amico JA, Itoua I, Strand HE, Morrison JC, Loucks CJ, Allnutt TF, Ricketts TH, Kura Y, Lamoreux JF, Wettengel WW, Hedao P, Kassem KR (2001) Terrestrial Ecoregions of the World: A New Map of Life on Earth: A new global map of terrestrial ecoregions provides an innovative tool for conserving biodiversity. *Bioscience* 51(11): 933–938. [https://doi.org/10.1641/0006-3568\(2001\)051\[0933:TEOTWA\]2.0.CO;2](https://doi.org/10.1641/0006-3568(2001)051[0933:TEOTWA]2.0.CO;2)
- Peterson AT (2011) Ecological niche conservatism: A time-structured review of evidence. *Journal of Biogeography* 38(5): 817–827. <https://doi.org/10.1111/j.1365-2699.2010.02456.x>
- Phillips SJ, Anderson RP, Schapire RE (2006) Maximum entropy modeling of species geographic distributions. *Ecological Modelling* 190(3–4): 231–259. <https://doi.org/10.1016/j.ecolmodel.2005.03.026>
- Phillips SJ, Anderson RP, Dudík M, Schapire RE, Blair ME (2017) Opening the black box: An open-source release of Maxent. *Ecography* 40(7): 887–893. <https://doi.org/10.1111/ecog.03049>
- R Core Team (2018) R: A language and environment for statistical computing. R Foundation for Statistical Computing, Vienna. <https://www.R-project.org/>

- Ripley BD (1996) Pattern recognition and neural networks. Cambridge University Press, Cambridge. <https://doi.org/10.1017/CBO9780511812651>
- Sales RF, de Andrade MJ, Jorge JDS, Kolodiuk MF, Ribeiro MM, Freire EM (2015) Geographic distribution model for *Mabuyaagmosticha* (Squamata: Scincidae) in northeastern Brazil. *Zoologia (Curitiba)* 32(1): 71–76. <https://doi.org/10.1590/S1984-46702015000100011>
- Sanabria E, Quiroga L (2019) The body temperature of active desert anurans from hyper-arid environment of South America: The reliability of WorldClim for predicted body temperatures in anurans. *Journal of Thermal Biology* 85: 102398. <https://doi.org/10.1016/j.jtherbio.2019.102398>
- Silva LG, Kawanishi K, Henschel P, Kittle A, Sanei A, Reebin A, Miquelle D, Stein, AB, Watson A, Kekule LB, Machado RB, Eizirik E (2017) Mapping black panthers: Macroecological modeling of melanism in leopards (*Panthera pardus*). *PLoS ONE* 12(4): e0170378. <https://doi.org/10.1371/journal.pone.0170378>
- Thuiller W, Georges D, Engler R, Breiner F (2016) biomod2: ensemble platform for species distribution modeling. R package version 3.3–7. <https://CRAN.R-project.org/package=biomod2>
- Tuanmu MN, Jetz W (2014) A global 1-km consensus land-cover product for biodiversity and ecosystem modelling. *Global Ecology and Biogeography* 23(9): 1031–1045. <https://doi.org/10.1111/geb.12182>
- Van Buskirk J (2005) Local and landscape influence on amphibian occurrence and abundance. *Ecology* 86(7): 1936–1947. <https://doi.org/10.1890/04-1237>
- Yang XQ, Kushwaha SPS, Saran S, Xu J, Roy PS (2013) Maxent modeling for predicting the potential distribution of medicinal plant, *Justicia adhatoda* L. in Lesser Himalayan foothills. *Ecological Engineering* 51: 83–87. <https://doi.org/10.1016/j.ecoleng.2012.12.004>

Supplementary material 1

Table S1

Authors: Felipe Pessoa Da Silva, Hugo Fernandes-Ferreira, Martín Alejandro Montes, Lucas Gonçalves da Silva

Data type: Occurrences

Explanation note: *Pithecopus nordestinus* location records used in the present study.

Copyright notice: This dataset is made available under the Open Database License (<http://opendatacommons.org/licenses/odbl/1.0/>). The Open Database License (ODbL) is a license agreement intended to allow users to freely share, modify, and use this Dataset while maintaining this same freedom for others, provided that the original source and author(s) are credited.

Link: <https://doi.org/10.3897/neotropical.15.e47426.suppl1>